



# LUND UNIVERSITY

## HUMAN EXPOSURE STUDIES OF AIRBORNE PARTICLES FROM COMMON SOURCES

Bohgard, Mats; Albin, Maria; Dierschke, Katrin; Gudmundsson, Anders; Hagerman, Inger; Isaxon, Christina; Jakobsson, Jonas; Jönsson, Bo A; Nielsen, Jörn; Nilsson, Patrik; Pagels, Joakim; Xu, Yiyi; Wierzbicka, Aneta

2014

[Link to publication](#)

### *Citation for published version (APA):*

Bohgard, M., Albin, M., Dierschke, K., Gudmundsson, A., Hagerman, I., Isaxon, C., Jakobsson, J., Jönsson, B. A., Nielsen, J., Nilsson, P., Pagels, J., Xu, Y., & Wierzbicka, A. (2014). *HUMAN EXPOSURE STUDIES OF AIRBORNE PARTICLES FROM COMMON SOURCES*. Paper presented at 13th International Conference on Indoor Air Quality and Climate, Indoor Air 2014, Hong Kong, Hong Kong.

### *Total number of authors:*

13

### **General rights**

Unless other specific re-use rights are stated the following general rights apply:

Copyright and moral rights for the publications made accessible in the public portal are retained by the authors and/or other copyright owners and it is a condition of accessing publications that users recognise and abide by the legal requirements associated with these rights.

- Users may download and print one copy of any publication from the public portal for the purpose of private study or research.
- You may not further distribute the material or use it for any profit-making activity or commercial gain
- You may freely distribute the URL identifying the publication in the public portal

Read more about Creative commons licenses: <https://creativecommons.org/licenses/>

### **Take down policy**

If you believe that this document breaches copyright please contact us providing details, and we will remove access to the work immediately and investigate your claim.

LUND UNIVERSITY

PO Box 117  
221 00 Lund  
+46 46-222 00 00

**Topic C3:** Nanoparticles in indoor environment

## **HUMAN EXPOSURE STUDIES OF AIRBORNE PARTICLES FROM COMMON SOURCES**

Mats BOHGARD<sup>1,\*</sup>, Maria ALBIN<sup>2</sup>, Katrin DIERSCHKE<sup>2</sup>, Anders GUDMUNDSSON<sup>1</sup>, Inger HAGERMAN<sup>3</sup>, Christina ISAXON<sup>1</sup>, Jonas JAKOBSSON<sup>1</sup>, Bo AG JÖNSSON<sup>2</sup>, Jörn NIELSEN<sup>2</sup>, Patrik NILSSON<sup>1</sup>, Joakim H PAGELS<sup>1</sup>, Yiyi XU<sup>2</sup>, and Aneta WIERZBICKA<sup>1</sup>

<sup>1</sup>Ergonomics and Aerosol Technology, Lund University, Sweden

<sup>2</sup>Division of Occupational and Environmental Medicine, Lund University, Sweden,

<sup>3</sup>Department of Cardiology, Karolinska Institute, Karolinska University Hospital, Huddinge, Sweden.

\*Corresponding email: Mats.Bohgard@design.lth.se

Keywords: Aerosols, nanoparticles, chamber studies, biomarkers

### **INTRODUCTION**

Several epidemiological studies show correlation between exposure to airborne particles and adverse health effects. Exposure measures used are often based only on mass concentration of particles with sizes below certain limits (PM10, PM2.5, PM1, i.e. particulate matter with diameters less than 10, 2.5 and 1  $\mu\text{m}$ , respectively) regardless the shape, morphology and chemical composition of the particles. There is a need for information based on precise experimental methods in order to increase our understanding on the mechanisms behind the adverse effects and to determine the exact nature of exposures which can cause the adverse effects.

The aims of the study are i) to develop settings for experimental human exposure studies for commonly abundant indoor air particle types and ii) to experimentally determine physiological effects on human test subjects.

### **METHODOLOGIES**

A stainless steel walk-in chamber of the volume 22 m<sup>3</sup> is used (Figure 1). Air can only enter and leave the chamber through a well-controlled ventilation system. Systems for exposure of various commonly abundant indoor particles are being developed. Test subjects have been and are being exposed to particles from candle lights, terpene-ozone reactions, metal inert gas welding, zeolite particles from detergent residues, cooking and diesel engine in a controlled way with respect to concentration, size distribution and particle characteristics. Concentrations and size distributions are in accordance with what can be found in indoor environments where air is contaminated by particles from these sources. Test persons (three or four at the time are sitting in the chamber) are being exposed to one particle type at one occasion and clean (virtually particle-free) air at another occasion, according to a double blind protocol. A number of biomarkers from the test subjects are determined (e.g. markers of inflammation in body fluids, ECG-registration with heart rate variability (HRV) analysis and

respiratory physiological parameters). Biochemical biomarkers are measured immediately after and 24 hours after exposure.

## **RESULTS AND DISCUSSION**

Exposure studies show that effects of airborne particles from different sources on biomarkers can be studied in a well-controlled experimental model systems. Various test aerosols could be artificially created and added to the chamber air with realistic properties compared to what can be found in real environments.

Aerosols with particles from candle lights, terpene-ozone reactions, welding, diesel engine were achieved with realistic particle concentrations and characterized with respect to mass and number concentrations and chemical composition (Isaxon et al. 2013 I ; Isaxon et al. 2013 II., Pagels et al. 2009; Wierzbicka et al. 2014). Mass concentrations achieved were typically  $200 \mu\text{g}/\text{m}^3$  for candle smoke,  $80 \mu\text{g}/\text{m}^3$  for terpene-ozone generated particles,  $1 \text{ mg}/\text{m}^3$  for welding fume and  $300 \mu\text{g}/\text{m}^3$  for diesel exhaust particles. In addition to these particle types, zeolite particles from detergent residues in textiles (Gudmundsson et al. 2007) are being generated in mass concentrations of  $300 \mu\text{g}/\text{m}^3$  and particles from frying hamburgers in concentrations of  $300\text{-}400 \mu\text{g}/\text{m}^3$ .

Results on effects on biomarkers have, until today, been observed for candle light smoke: significant increase of high frequency HRV compared to clean air and compared to terpene-ozone-generated particles (Hagerman et al. 2014). Exposure to diesel exhaust caused a significant decrease in the high frequency of heart rate variability spectrum. Heart rate variability is since long a well-recognized, noninvasive, independent method, for cardiovascular risk prediction in high prevalent groups (Malik, 1996). The studies, so far show significant negative impact on HRV of diesel exhaust compared to clean air and significant positive impact of candle light smoke on HRV compared to clean air and compared to terpene-ozone generated particles.

## **CONCLUSION**

Experimental chamber human exposure methodology have been developed in order to examine effects of exposures to common indoor airborne particles. The studies have so far shown significant negative effects on heart rate variability of diesel exhaust compared to particle-free air and significant positive effects on heart rate variability of candle light smoke compared to particle-free air and exposure to terpene-ozone generated particles, for healthy individuals.

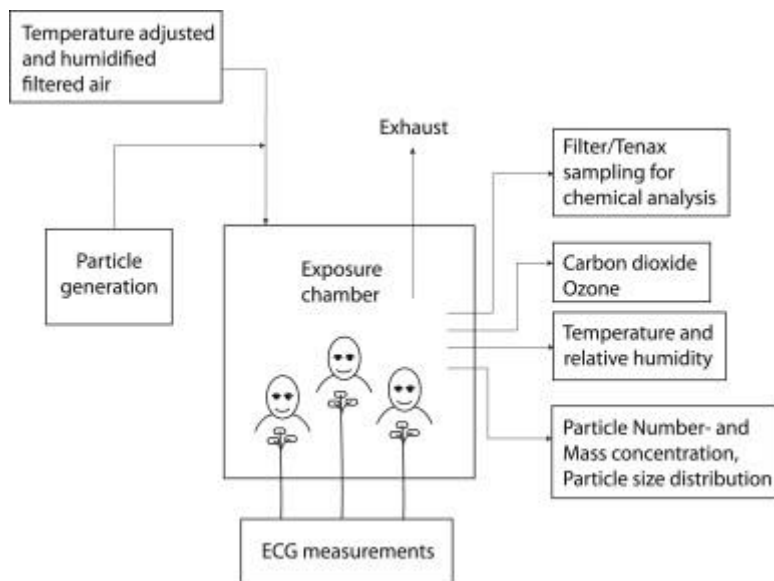


Figure 1. Simplified sketch of the experimental set-up for the chamber exposure studies.

## ACKNOWLEDGEMENT

We would like to thank all test subjects. Many thanks also to staff members Ulla BK Andersson, Eva Assarsson, Margareta Berglund, and Anna-Therese Gunnskog who participated in the exposure studies.

This study was financed by the Swedish Research Council FORMAS and performed within the framework of Metalund, the Centre for Medicine and Technology for Working Life and Society, a competence centre at Lund University, Sweden, supported by FORTE, the Swedish Research Council for Health, Working Life and Welfare. Additional support was obtained from VINNOVA - Swedish Governmental Agency for Innovation Systems.

## REFERENCES

- Gudmundsson A, Löndahl J & Bohgard M (2007) Methodology for identifying particle sources in indoor environments. *Journal of Environmental Monitoring*, 9(8) 831-838.
- Hagerman I, Isaxon C, Gudmundsson A et al. (2014) Effects on heart rate variability by artificially generated indoor nano-sized particles in a chamber study. *Atmospheric Environment*, 88 165-171.
- Isaxon C, Dierschke K, Pagels J et al. (2013) A novel system for source characterization and controlled human exposure to nanoparticle aggregates

generated during gas–metal arc welding. *Aerosol Science and Technology*, 47(1) 52-59. I.

Isaxon C, Dierschke K, Pagels J et al. (2013) Realistic indoor nano-aerosols for a human exposure facility. *Journal of Aerosol Science*, 60 55-66. II.

Malik M. (1996) Heart rate variability. Standards of measurement, physiological interpretation and clinical use. Task group of the Europeans society of cardiology and the North American society of pacing and electrophysiology. *Circulation* 93, 1043-1065.

Pagels J, Wierzbicka A, Nilsson E et al. (2009) Chemical composition and mass emission factors of candle smoke particles. *Journal of Aerosol Science*, 40(3) 193-208.

Wierzbicka A, Nilsson P, Rissler J et al. (2014) Detailed diesel exhaust characteristics including particle surface area and lung deposited dose for better understanding of health effects in human chamber exposure studies. *Atmospheric Environment*, 86 212-219.

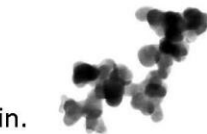


## HUMAN EXPOSURE STUDIES OF AIRBORNE PARTICLES FROM COMMON SOURCES

**MATS BOHGARD**, M. ALBIN, K. DIERSCHKE, A. GUDMUNDSSON, I. HAGERMAN, C. ISAXON, J. JAKOBSSON, B.A.G JÖNSSON, J. NIELSEN, P. NILSSON, J. H. PAGELS, Y. XU, A. WIERZBICKA



1 million nanoparticles/min.

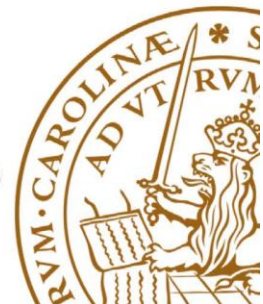


1 billion nanoparticles /min.

Many studies show adverse effects of airborne particles.

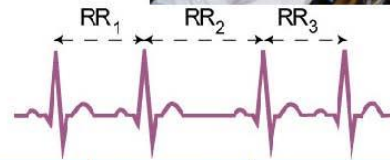
Measures used are often based on mass concentrations (PM<sub>10</sub>, PM<sub>2.5</sub>, PM<sub>1</sub>, i.e. mass of particles with diameters less than 10, 2.5 and 1  $\mu\text{m}$ )

The aim is to experimentally determine physiological effects on human test subjects of particles from common sources.





ECG-recordings  
Beat-to-beat-variability



### Results

SOURCE	CONCENTRATION		MEDIAN DIAMETER (nm)	NUMBER OF TEST PERSONS	CHANGE IN HF OF HRV (%)	INCREASE/DECREASE	p
	Mass ( $\mu\text{g}/\text{m}^3$ )	Number ( $\#\text{cm}^{-3}$ )					
Candle	$200 \pm 30$	$8 \cdot 10^5$	Bimodal 23; 270	18	$+22 \pm 5$	↑	0.01
Terpene. Ozone	$80 \pm 10$	$3 \cdot 10^4$	100	17	$-7 \pm 5$	↘	0.4
Diesel	$280 \pm 30$	$4 \cdot 10^5$	90	18	$-15 \pm 5$	↓	0.04