



# LUND UNIVERSITY

## Moisture safety in wood frame walls : blind evaluation of the hygrothermal calculation tool WUFI 5.0 using field measurements and determination of factors affecting the moisture safety

Mundt Petersen, Solof

2013

[Link to publication](#)

*Citation for published version (APA):*

Mundt Petersen, S. (2013). *Moisture safety in wood frame walls : blind evaluation of the hygrothermal calculation tool WUFI 5.0 using field measurements and determination of factors affecting the moisture safety*. [Licentiate Thesis, Division of Building Physics]. Byggnadsfysik LTH, Lunds Tekniska Högskola.

*Total number of authors:*

1

### General rights

Unless other specific re-use rights are stated the following general rights apply:

Copyright and moral rights for the publications made accessible in the public portal are retained by the authors and/or other copyright owners and it is a condition of accessing publications that users recognise and abide by the legal requirements associated with these rights.

- Users may download and print one copy of any publication from the public portal for the purpose of private study or research.
- You may not further distribute the material or use it for any profit-making activity or commercial gain
- You may freely distribute the URL identifying the publication in the public portal

Read more about Creative commons licenses: <https://creativecommons.org/licenses/>

### Take down policy

If you believe that this document breaches copyright please contact us providing details, and we will remove access to the work immediately and investigate your claim.

LUND UNIVERSITY

PO Box 117  
221 00 Lund  
+46 46-222 00 00

## Errata list

Section	Page	Line	
Content	9	27	Written: 4.5 Most moisture-critical position Should be: 4.5 The most moisture-critical position
1.3	12	35	Written: crtitical Should be: critical
1.6.1	14	12	Written: Thermophysical Society Bruno, Bruno University Should be: Thermophysical Society, Brno University
4.5	40	8	Written: Most moisture-critical position Should be: The most moisture-critical position
4.13	50	Fig 26	Should be: see next page
4.13	50	Fig 26	Should be: see next page
5.4.1	60	Fig 35 drawing	Written: 30 ACH Should be: 1 or 30 ACH
5.5	63	Fig 38b drawing	Painted: Blue dot Should be: Yellow dot
5.5	63	Fig 38d drawing	Painted: Blue dot Should be: Yellow dot
10	103	8	Written: Thermophysical Society Bruno, Bruno University Should be: Thermophysical Society, Brno University
10	103	9	Written: November 3 <sup>th</sup> Should be: November 3 <sup>rd</sup>
Paper II	Front-page	5	Written: November 3 <sup>th</sup> Should be: November 3 <sup>rd</sup>
Paper VI	3	1	Written: 3.2 Moisture Safety Design Mehtods Should be: 3.2 Moisture Safety Design Methods

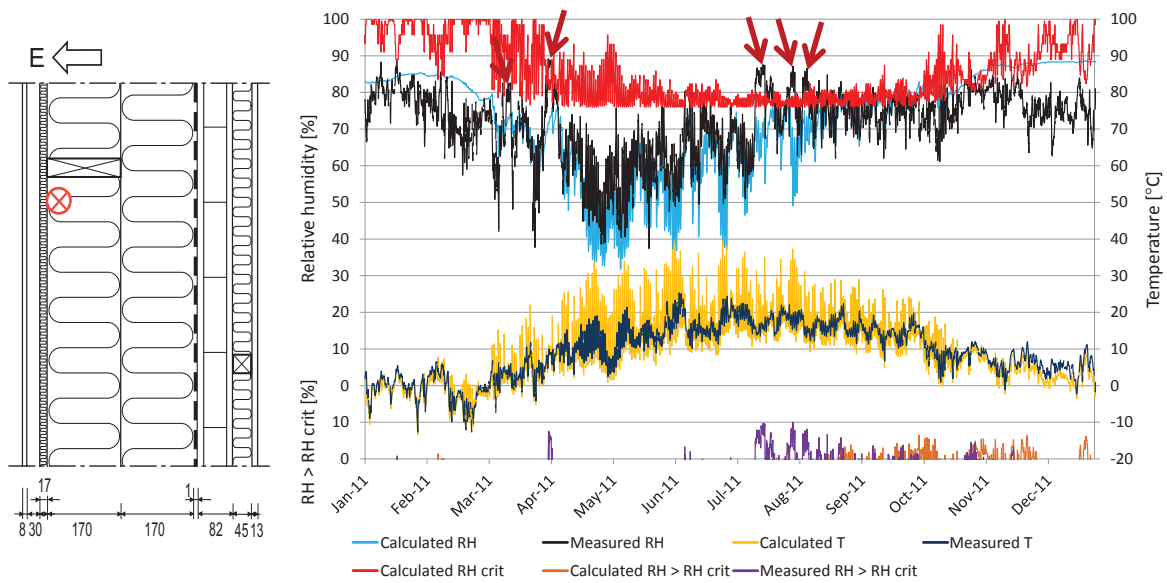


Figure 26. Example of comparisons between measured and blindly calculated RH and temperature behind the exterior mould-resistant facade insulation board where leakages from wind driven rain have increased the relative humidity (red arrows). Blindly calculated RH (turquoise) and measured RH (black). Blindly calculated temperature (yellow) and measured temperature (dark blue).  $RH_{crit}$  derived from the calculated temperature (red). Calculated RH >  $RH_{crit}$  (light brown) and measured RH >  $RH_{crit}$  (purple).

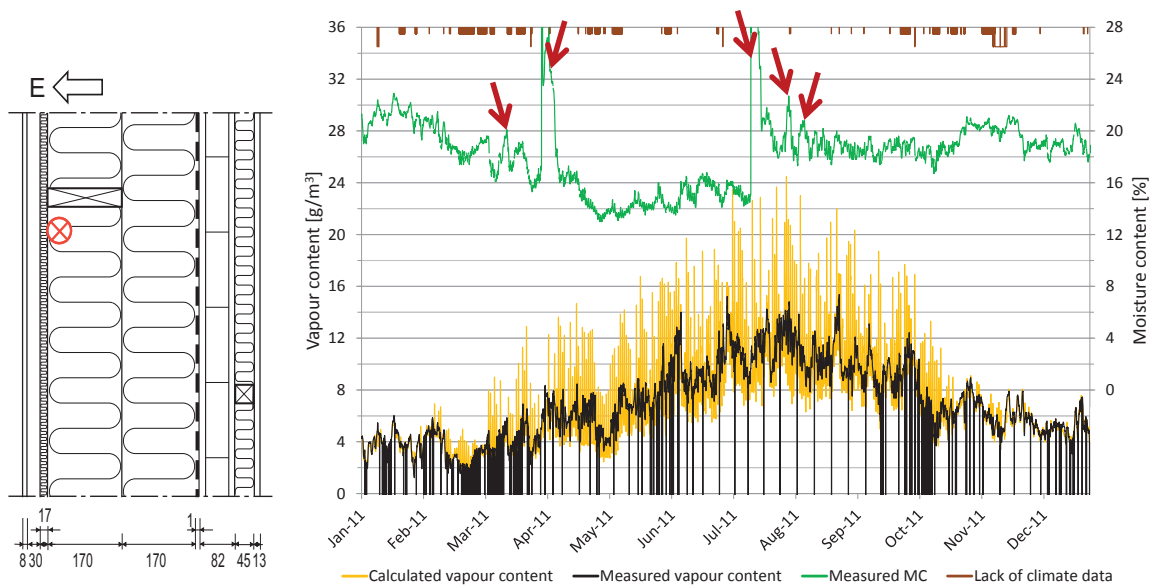


Figure 27. Example of comparisons and differences between recalculated vapour content for measured (black) and blindly calculated (yellow) values, periods with lack of climate data (brown), and measured (green) moisture content behind the exterior mould-resistant facade insulation board where leakages from wind driven rain have increased the moisture content (red arrows).