



# LUND UNIVERSITY

## **Growth differentiation factor 15 (GDF15) promotes osteoclast differentiation and inhibits osteoblast differentiation and high serum GDF15 levels are associated with multiple myeloma bone disease**

Westhrin, Marita; Moen, Siv Helen; Holien, Toril; Mylin, Anne Kærsgaard; Heickendorff, Lene; Olsen, Oddrun Elise; Sundan, Anders; Turesson, Ingemar; Gimsing, Peter; Waage, Anders; Standal, Therese

*Published in:*  
Haematologica

*DOI:*  
[10.3324/haematol.2015.124511](https://doi.org/10.3324/haematol.2015.124511)

2015

[Link to publication](#)

*Citation for published version (APA):*

Westhrin, M., Moen, S. H., Holien, T., Mylin, A. K., Heickendorff, L., Olsen, O. E., Sundan, A., Turesson, I., Gimsing, P., Waage, A., & Standal, T. (2015). Growth differentiation factor 15 (GDF15) promotes osteoclast differentiation and inhibits osteoblast differentiation and high serum GDF15 levels are associated with multiple myeloma bone disease. *Haematologica*, 100(12), E511-E514. <https://doi.org/10.3324/haematol.2015.124511>

*Total number of authors:*  
11

### **General rights**

Unless other specific re-use rights are stated the following general rights apply: Copyright and moral rights for the publications made accessible in the public portal are retained by the authors and/or other copyright owners and it is a condition of accessing publications that users recognise and abide by the legal requirements associated with these rights.

- Users may download and print one copy of any publication from the public portal for the purpose of private study or research.
- You may not further distribute the material or use it for any profit-making activity or commercial gain
- You may freely distribute the URL identifying the publication in the public portal

Read more about Creative commons licenses: <https://creativecommons.org/licenses/>

### **Take down policy**

If you believe that this document breaches copyright please contact us providing details, and we will remove access to the work immediately and investigate your claim.

LUND UNIVERSITY

PO Box 117  
221 00 Lund  
+46 46-222 00 00

### Growth differentiation factor 15 (GDF15) promotes osteoclast differentiation and inhibits osteoblast differentiation and high serum GDF15 levels are associated with multiple myeloma bone disease

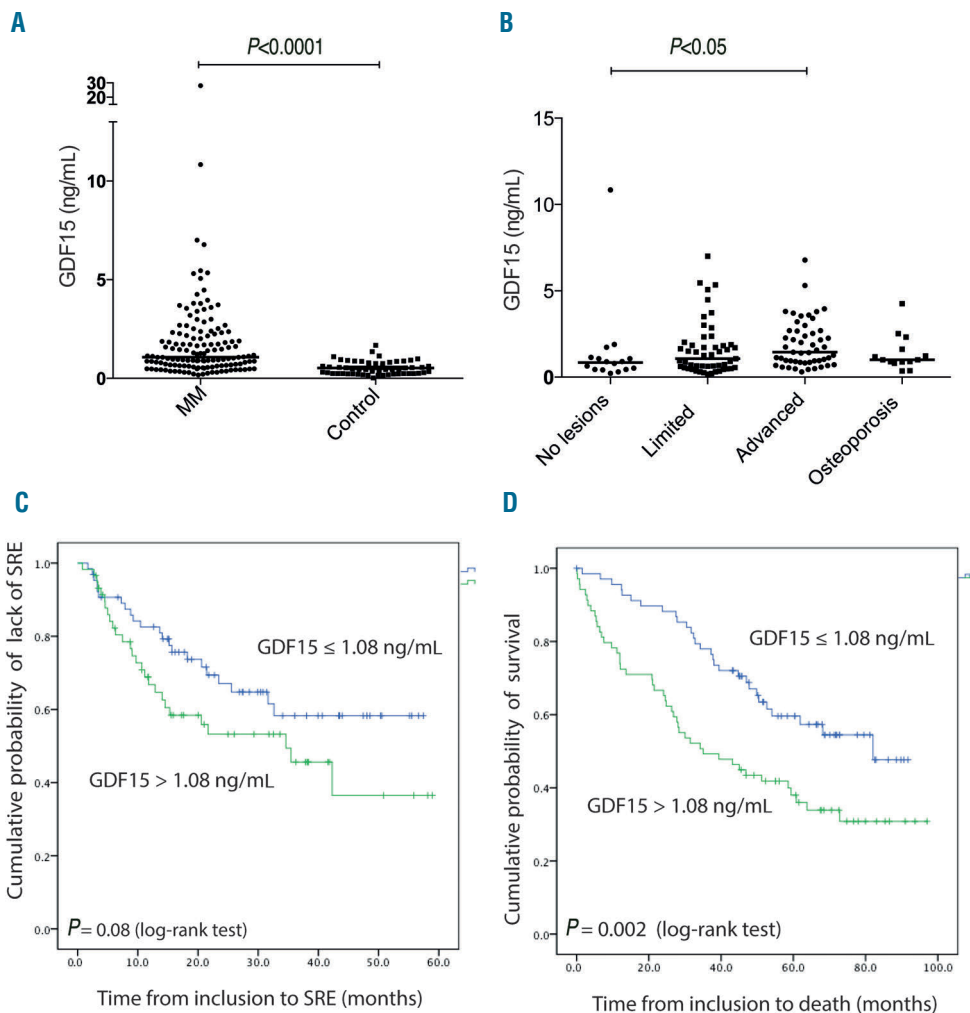
Multiple myeloma (MM) is a hematologic cancer caused by malignant plasma cells in the bone marrow. A characteristic feature of this cancer is the destruction of bone, which affects nearly all myeloma patients. The osteolytic bone disease is caused by an increased number and activity of osteoclasts, combined with a reduced number and dysfunction of osteoblasts.<sup>1</sup>

Growth differentiation factor 15 (GDF15) is a member of the transforming growth factor-beta family that has been shown to play a role in several types of cancer, inflammation, cardiovascular disease and many other pathologies.<sup>2</sup> Stromal cells in the bone marrow of MM patients overexpress GDF15,<sup>3,4</sup> and high levels of GDF15 in the circulation of myeloma patients are associated with a poor prognosis.<sup>4,5</sup> Moreover, GDF15 was recently shown to enhance the tumor-initiating and self-renewal potential of malignant plasma cells, as well as conferring drug resistance.<sup>4,5</sup>

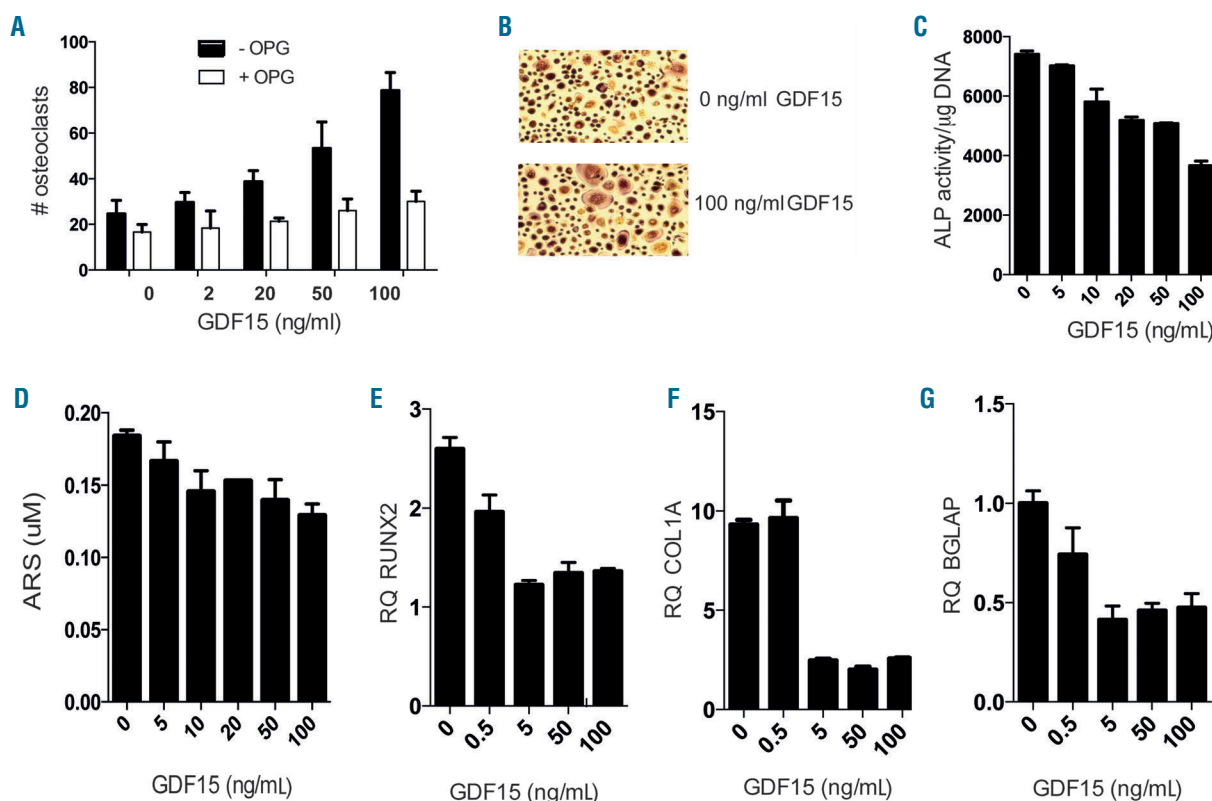
The effects of GDF15 on bone cells are unclear. One study demonstrated an important role for GDF15 in bone remodeling during hypoxia.<sup>6</sup> In particular, GDF15 pro-

duced by osteocytes promoted osteoclast differentiation both *in vitro* and *in vivo*.<sup>6</sup> Moreover, GDF15 was shown to promote osteoclast formation in prostate cancer metastasizing to bone.<sup>7</sup> In contrast, another study showed that GDF15 inhibited osteoclast formation *in vitro*.<sup>8</sup> These studies were, however, performed on mouse bone marrow mononuclear cells or murine macrophage-like cell lines, and how GDF15 affects human osteoclast differentiation is not reported. Moreover, little is known on how GDF15 affects osteoblast differentiation. Hence, we wanted to characterize the effect of GDF15 on the differentiation of human osteoclasts and osteoblasts and to measure GDF15 in serum from a well-characterized cohort of myeloma patients to see whether high GDF15 levels are associated with osteolytic bone disease.

GDF15 was measured by a multiplex assay (The MILLIPLEX MAP Human Cancer/Metastasis Biomarker Panel 1, Millipore Corporation, Billerica, MA, USA) in serum samples obtained at diagnosis from 138 myeloma patients and 58 age- and sex-matched healthy controls. Out of 21 tested cytokines, 12 were differently expressed in patients compared with controls (for the full list and details on multiple testing correction, see *Online Supplementary Data*).<sup>9</sup> The patients' samples were collected for the Nordic Myeloma Study Group during a randomized, phase 3 clinical trial which compared the effect of two different doses of pamidronate on bone. The bone



**Figure 1.** GDF15 serum levels in myeloma patients at the time of diagnosis are higher in patients with osteolytic lesions. (A) GDF15 was measured in serum samples from MM patients (n=138) and healthy controls (n=58). Differences between groups were analyzed by the Kruskal-Wallis test and bars indicate median values. (B) Bone disease status at inclusion was available for 132 of the myeloma patients, and the patients were divided into groups based on degree of bone destruction: limited,  $\leq 3$  osteolytic lesions (n=51), advanced,  $> 3$  osteolytic lesions (n=51) and diffuse osteoporosis, without lesions (n=14). Serum GDF15 levels in these groups were compared with serum GDF15 levels in patients without bone disease (n=16) using the Dunn multiple comparison test. Bars indicate median values. (C) Kaplan-Meier plot of the appearance of skeletal-related events (SRE) in myeloma patients with serum GDF15  $\leq 1.08$  ng/mL or GDF15  $> 1.08$  ng/mL. (D) Kaplan-Meier plot of survival in myeloma patients with serum GDF15  $\leq 1.08$  ng/mL or GDF15  $> 1.08$  ng/mL.



**Figure 2.** GDF15 promotes osteoclastogenesis and inhibits osteoblastogenesis *in vitro*. (A) Peripheral blood monocytes were treated with macrophage colony-stimulating factor (M-CSF) (30 ng/mL) and left to differentiate in the presence of RANKL (50 ng/mL) with or without osteoprotegerin (OPG 200 ng/mL) and various concentrations of GDF15 as indicated. On day 14 TRAP-positive multinucleated cells were counted. Error bars = SEM of triplicate wells. The figure shows one representative experiment out of three. (B) Representative images of TRAP-stained osteoclasts. (C) Alkaline phosphatase (ALP) activity/ $\mu\text{g}$  DNA was determined in human bone marrow-derived mesenchymal stem cells (hMSC) differentiated in osteogenic medium containing L-ascorbic acid (50 mM), dexamethasone ( $10^{-8}$  M) and  $\beta$ -glycerophosphate (10 mM) for 7 days. Error bars = SEM of triplicate wells. (D) hMSC were differentiated for 17 days in osteogenic media and stained with alizarin red-S (ARS) to quantify degree of mineralization. Error bars = SEM of duplicate experiments. (E) mRNA expression of RUNX2, (F) COL1A1 and (G) BGLAP in hMSC at day 7 after differentiation. Bars represent mean of triplicate experiments, error bars represent maximal relative quantity. The figure shows one representative experiment of three.

disease was, therefore, particularly well characterized in this study.<sup>10,11</sup>

We found that the concentration of GDF15 was significantly higher in serum obtained from myeloma patients (median 1.08 ng/mL; range, 0.17-28.08) than from healthy controls (median 0.46 ng/mL; range, 0.02-1.68; independent samples Kruskal-Wallis test  $P \leq 0.0001$ , corrected for multiple comparisons,  $P \leq 0.02$ ) (Figure 1A). Moreover, the level of serum GDF15 was higher in patients with more advanced osteolytic bone disease ( $>3$  osteolytic lesions,  $n=51$ , median 1.44 ng/mL; range, 0.30-6.78) than in patients without osteolytic lesions ( $n=16$ , median 0.84 ng/mL; range, 0.22-10.84) at inclusion ( $P < 0.05$ , Dunn multiple comparison test) (Figure 1B), supporting the concept that GDF15 might play a role in myeloma bone disease. The difference in serum GDF15 levels between myeloma patients with limited bone disease ( $\leq 3$  osteolytic lesions,  $n=51$ , median 1.07 ng/mL; range, 0.17-7.01) and myeloma patients with no bone disease, and the difference between myeloma patients with osteoporosis but no lesions ( $n=14$ , median 1.01 ng/mL; range, 0.36-4.26) and myeloma patients with no bone disease were not statistically significant. Skeletal-related events (defined as pathological fractures, radiotherapy or surgery to bone, new vertebral compression, symptomatic new or progressive osteolytic lesions and

hypercalcemia) were evaluated every third month.<sup>10</sup> For patients with serum GDF15 levels equal to or less than the median serum GDF15 level (GDF15  $\leq 1.08$  ng/mL,  $n=65$ ), the time to skeletal-related events was not reached, while estimated time from inclusion to skeletal-related events in the group of patients with serum GDF15  $> 1.08$  ng/mL was 35 months ( $n=59$ ). This difference was not, however, statistically significant ( $P=0.08$  log-rank test, Figure 1C). The median time from inclusion to skeletal-related events for the whole group of patients with recorded skeletal status was 42 months ( $n=124$ ). In line with what has been reported previously<sup>5</sup> we found that low serum GDF15 concentration was associated with better overall survival: the median survival of patients who had a serum GDF15  $\leq 1.08$  ng/mL ( $n=69$ ) was estimated to be 82 months, while the median survival for patients with GDF15 levels above 1.08 ng/mL was estimated to be 35 months ( $P=0.002$ , log-rank test) (Figure 1D). The overall median survival for the 138 myeloma patients was estimated to be 59 months. An increase in serum GDF15 levels of 1 ng/mL led to an increased risk of death of 1.187 (univariate Cox regression,  $P < 0.001$ ).

Importantly, levels of serum GDF15 correlated with levels of markers for osteoclast activity, carboxy-terminal crosslinked telopeptide of type I collagen (CTX1) (Spearman rho 0.40,  $P \leq 0.001$ ) and carboxy-terminal

crosslinked telopeptide of type I collagen generated by matrix metalloproteinases (ICTP) (Spearman rho 0.63,  $P \leq 0.001$ ), supporting an association between high GDF15 levels and increased osteoclast activation. In contrast, serum GDF15 concentration did not correlate with markers of osteoblast activity, bone-specific alkaline phosphatase (rho -0.06,  $P=0.52$ ) or amino-terminal propeptide of procollagen (PINP) (rho 0.15,  $P=0.07$ ).

To evaluate the effect of GDF15 on osteoclast differentiation *in vitro* we differentiated osteoclasts from peripheral blood mononuclear cells ( $n=3$ ) or from purchased pre-osteoclasts (Lonza Inc., Allendale, NJ, USA;  $n=2$ ). The cells were cultured in osteoclast medium [a-MEM with human serum (20%), macrophage colony-stimulating factor (M-CSF; 30 ng/mL) and receptor activator of NF- $\kappa$ B ligand (RANKL; 50 ng/mL)] for up to 14 days with or without GDF15 and thereafter stained for tartrate resistant acid phosphatase (TRAP). We found that GDF15 dose-dependently increased the number of multi-nucleated TRAP-positive cells differentiated from peripheral blood mononuclear cells (Figure 2A,B). When we used pre-osteoclasts as precursor cells, however, the optimal concentration was in the lower range (2-20 ng/mL) while higher concentrations had no effect (Online Supplementary Figure S1). GDF15 could not promote osteoclast differentiation in the absence of RANKL (*data not shown*), and the effect of GDF15 was inhibited by osteoprotegerin, suggesting that GDF15 acts cooperatively with RANKL. Hence, our results support previous studies showing an osteoclast-promoting effect of GDF15.<sup>6,7</sup>

To investigate whether GDF15 influences osteoblast differentiation *in vitro* we cultured human bone marrow-derived mesenchymal stem cells (Lonza Inc., Allendale, NJ, USA) ( $n=3$ ) in osteogenic medium containing L-ascorbic acid (50 mM), dexamethasone ( $10^{-8}$ M) and  $\beta$ -glycerophosphate (10 mM) in the presence or absence of GDF15 for up to 17 days. Alkaline phosphatase activity is considered an early marker of osteoblast differentiation, and was quantified after 7 days as described previously.<sup>12</sup> In all donors, GDF15 dose-dependently inhibited alkaline phosphatase-activity (Figure 2C). Moreover, late differentiation, as evaluated by the cells' ability to mineralize matrix, was reduced in the presence of GDF15 (Figure 2D,E). Supporting reduced differentiation in the presence of GDF15, mRNA levels of osteoblast markers *RUNX2*, type I collagen (*COL1A1*) and osteocalcin (bone gamma-carboxyglutamic acid-containing protein, *BGLAP*) were decreased upon GDF15 treatment (Figure 2F-H).

GDF15 influenced *in vitro* differentiation of osteoclasts and osteoblasts at concentrations ranging from 5-100 ng/mL, while the median concentration of GDF15 in serum obtained from myeloma patients was 1.08 ng/mL (Figure 1A). To compare levels of GDF15 in bone marrow plasma with levels in blood serum we measured GDF15 by the multiplex assay (Millipore) in a set of paired bone-marrow plasma and serum samples obtained from myeloma patients ( $n=16$ ) (Online Supplementary Figure S2). In accordance with previously published data,<sup>5</sup> there was a strong correlation between bone marrow plasma levels and serum levels (Spearman rho = 0.97,  $P < 0.0001$ ), which implies that levels of GDF15 in serum reflect levels of GDF15 in bone marrow. In our set of samples levels in bone marrow plasma appeared approximately 25% lower than levels in serum (Online Supplementary Figure S2). However, this was not observed in a previous study.<sup>5</sup> Unprocessed GDF15 is stored in extracellular matrix,<sup>13</sup> and might be activated/released locally. Hence, future studies should address the relationship between circulating levels of GDF15 and levels locally in the bone mar-

row, and whether GDF15 in concentrations found locally in myeloma bone marrow influence bone homeostasis *in vivo*. Importantly, levels of GDF15 in bone marrow plasma from myeloma patients were elevated compared with levels in bone marrow plasma from healthy persons,<sup>5</sup> suggesting that cells in myeloma bone marrow are exposed to higher concentrations of GDF15 than cells in a healthy bone marrow.

In conclusion, serum GDF15 levels are elevated in myeloma patients with advanced osteolytic bone disease compared to the levels in patients with no lesions, and correlate with serum markers for osteoclast activity. We found that GDF15 increases osteoclast differentiation and at the same time inhibits osteoblast differentiation *in vitro*. Hence, GDF15 might play a role in uncoupling bone formation and resorption in multiple myeloma. Our results presented here and recent reports by others<sup>4,5</sup> suggest that GDF15 may be of interest as a target for treatment of multiple myeloma.

Marita Westhryn,<sup>1</sup> Siv Helen Moen,<sup>1</sup> Toril Holien,<sup>1</sup> Anne Kærsgaard Mylin,<sup>2</sup> Lene Heickendorff,<sup>3</sup> Oddrun Elise Olsen,<sup>1</sup> Anders Sundan,<sup>1</sup> Ingemar Turesson,<sup>4</sup> Peter Gimsing,<sup>2</sup> Anders Waage,<sup>1</sup> and Therese Standal<sup>1,5\*</sup>

<sup>1</sup>K.G. Jebsen Center for Myeloma Research, Department of Cancer Research and Molecular Medicine, Norwegian University of Science and Technology, Trondheim, Norway; <sup>2</sup>Department of Haematology, Rigshospitalet, University of Copenhagen, Denmark; <sup>3</sup>Department of Clinical Biochemistry, Aarhus University Hospital, Denmark; <sup>4</sup>Department of Hematology, Skane University Hospital, Malmö, Sweden; and <sup>5</sup>Centre of Molecular Inflammation Research, Norwegian University of Science and Technology, Trondheim, Norway

Acknowledgments: we thank Berit Størdal for excellent technical assistance.

Funding: the work was supported by the Norwegian Cancer Society (project ID 450930), the K.G. Jebsen Foundation and the Cancer Foundation at St Olavs Hospital.

The online version of this letter has a Supplementary Appendix.

Correspondence: therese.standal@ntnu.no  
doi:10.3324/haematol.2015.124511

Key words: GDF15, multiple myeloma, osteoclast differentiation, osteoblast differentiation.

Information on authorship, contributions, and financial & other disclosures was provided by the authors and is available with the online version of this article at [www.haematologica.org](http://www.haematologica.org).

## References

- Yaccoby S. Advances in the understanding of myeloma bone disease and tumour growth. *Br J Haematol.* 2010;149(3):311-321.
- Unsicker K, Spittau B, Kriegelstein K. The multiple facets of the TGF-beta family cytokine growth/differentiation factor-15/macrophage inhibitory cytokine-1. *Cytokine Growth Factor Rev.* 2013;24(4):373-384.
- Corre J, Mahtouk K, Attal M, et al. Bone marrow mesenchymal stem cells are abnormal in multiple myeloma. *Leukemia.* 2007;21(5):1079-1088.
- Tanno T, Lim Y, Wang Q, et al. Growth differentiating factor 15 enhances the tumor-initiating and self-renewal potential of multiple myeloma cells. *Blood.* 2014;123(5):725-733.
- Corre J, Labat E, Espagnolle N, et al. Bioactivity and prognostic significance of growth differentiation factor GDF15 secreted by bone marrow mesenchymal stem cells in multiple myeloma. *Cancer Res.* 2012;72(6):1395-1406.
- Hinoi E, Ochi H, Takarada T, et al. Positive regulation of osteoclastic differentiation by growth differentiation factor 15 upregulated in osteocytic cells under hypoxia. *J Bone Miner Res.* 2012;27(4):938-949.

7. Wakchoure S, Swain TM, Hentunen TA, et al. Expression of macrophage inhibitory cytokine-1 in prostate cancer bone metastases induces osteoclast activation and weight loss. *Prostate*. 2009;69(6):652-661.
8. Vanhara P, Lincova E, Kozubik A, Jurdic P, Soucek K, Smarda J. Growth/differentiation factor-15 inhibits differentiation into osteoclasts--a novel factor involved in control of osteoclast differentiation. *Differentiation*. 2009;78(4):213-222.
9. Olsen OE, Wader KF, Misund K, et al. Bone morphogenetic protein-9 suppresses growth of myeloma cells by signaling through ALK2 but is inhibited by endoglin. *Blood Cancer J*. 2014;4:e196.
10. Gimsing P, Carlson K, Turesson I, et al. Effect of pamidronate 30 mg versus 90 mg on physical function in patients with newly diagnosed multiple myeloma (Nordic Myeloma Study Group): a double-blind, randomised controlled trial. *Lancet Oncol*. 2010;11(10):973-982.
11. Mylin AK, Abildgaard N, Johansen JS, et al. Serum YKL-40: a new independent prognostic marker for skeletal complications in patients with multiple myeloma. *Leuk Lymphoma*. 2015;1-10. [Epub ahead of print].
12. Standal T, Abildgaard N, Fagerli UM, et al. HGF inhibits BMP-induced osteoblastogenesis: possible implications for the bone disease of multiple myeloma. *Blood*. 2007;109(7):3024-3030.
13. Bauskin AR, Brown DA, Junankar S, et al. The propeptide mediates formation of stromal stores of PROMIC-1: role in determining prostate cancer outcome. *Cancer Res*. 2005;65(6):2330-2336.