



# LUND UNIVERSITY

## Tyrosine kinase inhibitors improve long-term outcome of allogeneic hematopoietic stem cell transplantation for adult patients with Philadelphia chromosome positive acute lymphoblastic leukemia.

Brissot, Eolia; Labopin, Myriam; Beckers, Marielle M; Socié, Gérard; Rambaldi, Alessandro; Volin, Liisa; Finke, Jürgen; Lenhoff, Stig; Kröger, Nicolaus; Ossenkoppele, Gert J; Craddock, Charles F; Yakoub-Agha, Ibrahim; Gürman, Günhan; Russell, Nigel H; Aljurf, Mahmoud; Potter, Michael N; Nagler, Arnon; Ottmann, Oliver; Cornelissen, Jan J; Esteve, Jordi; Mohty, Mohamad

Published in:  
Haematologica

DOI:  
[10.3324/haematol.2014.116954](https://doi.org/10.3324/haematol.2014.116954)

2015

[Link to publication](#)

### Citation for published version (APA):

Brissot, E., Labopin, M., Beckers, M. M., Socié, G., Rambaldi, A., Volin, L., Finke, J., Lenhoff, S., Kröger, N., Ossenkoppele, G. J., Craddock, C. F., Yakoub-Agha, I., Gürman, G., Russell, N. H., Aljurf, M., Potter, M. N., Nagler, A., Ottmann, O., Cornelissen, J. J., ... Mohty, M. (2015). Tyrosine kinase inhibitors improve long-term outcome of allogeneic hematopoietic stem cell transplantation for adult patients with Philadelphia chromosome positive acute lymphoblastic leukemia. *Haematologica*, 100(3), 392-399. <https://doi.org/10.3324/haematol.2014.116954>

Total number of authors:  
21

### General rights

Unless other specific re-use rights are stated the following general rights apply:  
Copyright and moral rights for the publications made accessible in the public portal are retained by the authors and/or other copyright owners and it is a condition of accessing publications that users recognise and abide by the legal requirements associated with these rights.

- Users may download and print one copy of any publication from the public portal for the purpose of private study or research.
- You may not further distribute the material or use it for any profit-making activity or commercial gain
- You may freely distribute the URL identifying the publication in the public portal

Read more about Creative commons licenses: <https://creativecommons.org/licenses/>

### Take down policy

If you believe that this document breaches copyright please contact us providing details, and we will remove access to the work immediately and investigate your claim.

LUND UNIVERSITY

PO Box 117  
221 00 Lund  
+46 46-222 00 00

# Tyrosine kinase inhibitors improve long-term outcome of allogeneic hematopoietic stem cell transplantation for adult patients with Philadelphia chromosome positive acute lymphoblastic leukemia

Eolia Brissot,<sup>1,2,3,4</sup> Myriam Labopin,<sup>1,2,3</sup> Marielle M. Beckers,<sup>5</sup> Gérard Socié,<sup>6</sup> Alessandro Rambaldi,<sup>7</sup> Liisa Volin,<sup>8</sup> Jürgen Finke,<sup>9</sup> Stig Lenhoff,<sup>10</sup> Nicolaus Kröger,<sup>11</sup> Gert J. Ossenkoppele,<sup>12</sup> Charles F. Craddock,<sup>13</sup> Ibrahim Yakoub-Agha,<sup>14</sup> Günhan Gürman,<sup>15</sup> Nigel H. Russell,<sup>16</sup> Mahmoud Aljurf,<sup>17</sup> Michael N. Potter,<sup>18</sup> Armon Nagler,<sup>19</sup> Oliver Ottmann,<sup>20</sup> Jan J. Cornelissen,<sup>21</sup> Jordi Esteve,<sup>22</sup> and Mohamad Mohty<sup>1,2,3</sup>

<sup>1</sup>Université Pierre et Marie Curie, Paris, France; <sup>2</sup>INSERM, UMRs 938, Paris, France; <sup>3</sup>Service d'Hématologie Clinique et de Thérapie Cellulaire, Hôpital Saint Antoine, APHP, Paris, France; <sup>4</sup>CHRU Hôtel-Dieu, Nantes, France; <sup>5</sup>University Hospital Leuven, Leuven, Belgium; <sup>6</sup>Hôpital Saint Louis, Paris, France; <sup>7</sup>Azienda Ospedaliera Papa Giovanni XXIII, Bergamo, Italy; <sup>8</sup>Helsinki University Central Hospital, Finland; <sup>9</sup>University of Freiburg Medical Center, Germany; <sup>10</sup>Lund University Hospital, Sweden; <sup>11</sup>University Hospital Hamburg-Eppendorf, Hamburg, Germany; <sup>12</sup>VU University Medical Center, Amsterdam, The Netherlands; <sup>13</sup>Queen Elizabeth Hospital, Birmingham, UK; <sup>14</sup>CHRU Lille, France; <sup>15</sup>Ankara University, Faculty of Medicine, Ankara, Turkey; <sup>16</sup>Nottingham University Hospital, Nottingham, UK; <sup>17</sup>King Faisal Specialist Hospital and Research Centre, Riyadh, Saudi Arabia; <sup>18</sup>The Royal Marsden NHS Foundation Trust, London, UK; <sup>19</sup>Chaim Sheba Medical Center, Tel Hasomer, Israel; <sup>20</sup>Goethe-University Frankfurt, Germany; <sup>21</sup>Erasmus Medical Center–Daniel den Hoed Cancer Center, Rotterdam, The Netherlands; <sup>22</sup>Hospital Clinic Institut d'investigacions Biomèdiques August Pi i Sunyer, Barcelona, Spain

## ABSTRACT

This study aimed to determine the impact of tyrosine kinase inhibitors given pre- and post-allogeneic stem cell transplantation on long-term outcome of patients allografted for Philadelphia chromosome-positive acute lymphoblastic leukemia. This retrospective analysis from the EBMT Acute Leukemia Working Party included 473 *de novo* Philadelphia chromosome-positive acute lymphoblastic leukemia patients in first complete remission who underwent an allogeneic stem cell transplantation using a human leukocyte antigen-identical sibling or human leukocyte antigen-matched unrelated donor between 2000 and 2010. Three hundred and ninety patients received tyrosine kinase inhibitors before transplant, 329 at induction and 274 at consolidation. Kaplan-Meier estimates of leukemia-free survival, overall survival, cumulative incidences of relapse incidence, and non-relapse mortality at five years were 38%, 46%, 36% and 26%, respectively. In multivariate analysis, tyrosine-kinase inhibitors given before allogeneic stem cell transplantation was associated with a better overall survival (HR=0.68;  $P=0.04$ ) and was associated with lower relapse incidence (HR=0.5;  $P=0.01$ ). In the post-transplant period, multivariate analysis identified prophylactic tyrosine-kinase inhibitor administration to be a significant factor for improved leukemia-free survival (HR=0.44;  $P=0.002$ ) and overall survival (HR=0.42;  $P=0.004$ ), and a lower relapse incidence (HR=0.40;  $P=0.01$ ). Over the past decade, administration of tyrosine kinase inhibitors before allogeneic stem cell transplantation has significantly improved the long-term allogeneic stem cell transplantation outcome of adult Philadelphia chromosome-positive acute lymphoblastic leukemia. Prospective studies will be of great interest to further confirm the potential benefit of the prophylactic use of tyrosine kinase inhibitors in the post-transplant setting.

## Introduction

The Philadelphia (Ph) chromosome is one of the most frequent cytogenetic abnormalities in adult acute lymphoblastic leukemia (ALL). Its prevalence increases with age, accounting for 12%-30% in patients aged 18-35 years, 40% in patients aged 36-50 years, and over 50% in patients aged over 60 years.<sup>1,2</sup> Philadelphia-positive (Ph<sup>+</sup>) ALL is associated with an at least 10% lower rate of achieving a first complete remission (CR1) with standard induction as compared to Ph-negative disease and has poor long-term prognosis, with a median survival of eight months.<sup>3,4</sup> In recent years, BCR-ABL1-directed tyrosine kinase inhibitors (TKIs), such as imatinib mesylate (and more recently dasatinib or nilotinib), combined with chemotherapy have been found to be very effective for inducing disease remission in patients with Ph<sup>+</sup>ALL without additional toxicity, suggesting that better long-term outcomes

may be possible.<sup>5-10</sup> In the pre-TKI era, allo-SCT was considered to be the standard of care using either a matched sibling or unrelated donor in first CR (CR1) in adults.<sup>11-17</sup> Although allo-SCT could offer a curative option in Ph<sup>+</sup> ALL,<sup>17</sup> relatively high rates of relapse and non-relapse mortality (NRM) limited the benefit of an allo-SCT.<sup>15,18-20</sup> The international Bone Marrow Transplant Registry reported a leukemia-free survival (LFS) rate of 38% following human leukocyte antigen (HLA)-identical allo-SCT in CR1.<sup>15</sup> Several groups have reported that TKI-based induction chemotherapy produced high CR rates, thus allowing a high proportion of patients to proceed to allo-SCT.<sup>18,21-25</sup> However, there is little information on the efficacy of TKI administration after allo-SCT.<sup>26,27</sup> Moreover, the impact of TKI-based therapy on long-term outcome after allo-SCT remains unclear. To address whether allo-SCT associated with TKI administration before and/or after allo-SCT is a valid therapeutic approach as compared to

©2015 Ferrata Storti Foundation. This is an open-access paper. doi:10.3324/haematol.2014.116954

The online version of this article has a Supplementary Appendix.

Manuscript received on September 8, 2014. Manuscript accepted on December 15, 2014.

Correspondence: mohamad.mohty@inserm.fr

conventional chemotherapy, we conducted a retrospective comparative study assessing the outcome of 473 adult patients with Ph<sup>+</sup> ALL who, between 2000 and 2010, underwent allo-SCT in CR1 with HLA-identical siblings or matched unrelated donors, with a special emphasis on the impact of TKIs.

## Methods

### Study design, data collection and selection criteria

Patients with Ph<sup>+</sup> ALL reported to the registry of the Acute Leukemia Working Party of the European Group for Blood and Marrow Transplantation (EBMT) were included in this study. For the purpose of this specific analysis, participating centers were requested to enroll consecutive Ph+ALL cases diagnosed between January 2000 and December 2010. The study aimed to include cases of Ph+ B-ALL receiving first allo-SCT from an HLA-identical sibling donor (MSD) or HLA-matched unrelated donor (at least 6/6 HLA matching) (MUD) who: i) were aged 18 years or over at time of transplant; ii) were in CR1; iii) were transplanted between 2000 and 2010; iv) received allogeneic unmanipulated bone marrow (BM) or peripheral blood stem cells (PBSC) as stem cell source; v) received a standard myeloablative conditioning (MAC) regimen or a reduced-intensity conditioning (RIC) regimen according to Bacigalupo's criteria;<sup>28</sup> and vi) whose complete clinical data and outcomes were available. A total of 473 allo-SCT recipients from 77 participating centers met these eligibility criteria. Institutional review board approval was obtained from all participating institutions.

### Minimal residual disease assessment

Investigators were asked to provide minimal residual disease (MRD) data at time of transplant. As the most commonly accepted level of sensitivity for a given sample to be considered PCR negative is  $10^4$  BCR/ABL copies, we distinguished two groups for the purpose of this analysis: a "low-risk" group with MRD  $\leq 10^4$ , and a "high-risk" group with a ratio  $>10^4$ .<sup>29,30</sup>

### Statistical analyses and definitions

The primary end points were leukemia-free survival (LFS), relapse incidence (RI), and non-relapse mortality (NRM). Secondary end points were overall survival (OS), acute graft-versus-host disease (aGvHD) and chronic graft-versus-host-disease (cGvHD).

Patient-related, disease-related, and transplant-related variables were compared between the 2 groups receiving or not TKI before transplantation using the  $\chi^2$  statistics for categorical variables and the Mann-Whitney test for continuous variables. Factors that differed significantly between the two groups with *P* values less than 0.05, and all factors associated with a *P* value less than 0.10 by univariate analysis were included in the final models. Cumulative incidence functions (CIF) were used to estimate RI and NRM in a competing risk setting, because death and relapse compete with each other. To study cGvHD, we considered relapse and death to be competing events. Probabilities of LFS and OS were calculated using Kaplan-Meier estimates. Univariate analyses were performed using Gray's test for CIF and the log rank test for LFS and OS. Associations of patients' and graft characteristics with outcomes were evaluated in multivariate analysis, using Cox proportional hazards model. In order to assess the possible impact of acute GvHD, chronic GvHD and use of up-front prophylactic TKI after transplant on outcome, we used a Cox model with time-dependent variables.

All tests were two-sided. The type-1 error rate was fixed at 0.05 for determination of factors associated with time-to-event out-

comes. Statistical analyses were performed with SPSS 19 (SPSS Inc./IBM, Armonk, NY, USA) and R 3.0.1 (R Development Core Team, Vienna, Austria) software packages.

## Results

### Patients' characteristics

Four hundred and seventy-three allo-SCT recipients were included in this study (*Online Supplementary Table S1*); 260 (55%) were males. Median age was 42 years (range 18-70). Sixty-nine (15%) patients presented with extramedullary disease at time of diagnosis and the median white blood cell (WBC) count was  $20.9 \times 10^9/L$  (range 0.3-640). Three hundred and seventy-five (79.3%) patients received a standard MAC regimen and 98 (20.7%) an RIC regimen. One hundred and fifty-five (33.3%) patients received antithymocyte globulin (ATG) as part of the conditioning regimen. The median follow up (F/U) of alive patients after allo-SCT was 45 months.

### Tyrosine kinase treatment features

Three hundred and ninety (82.5%) patients received TKIs before transplant. Among them, 329 received TKIs at induction, 274 at consolidation, 100 at induction only, 61 at consolidation only, 213 both at induction and consolidation. For 16 patients who received TKIs at induction, information at consolidation was missing. As expected, imatinib was the most widely used TKI (89.1%) at a median dose of 600 mg/d, followed by dasatinib (9.3%) at a median dose of 140 mg/d, while 6 patients received nilotinib (3 unknown cases). The median time of TKI initiation was 11 days (range 0-363) after diagnosis and median duration of administration was 99 days (range 7-385). The groups "TKIs before allo-SCT" and "no TKIs before allo-SCT" were comparable in terms of age, WBC at diagnosis, interval from diagnosis to CR1 and from CR1 to HSCT, patient sex, donor sex, extramedullary disease at diagnosis, type of donor, and level of MRD (*Online Supplementary Table S1*). Median follow up of patients without TKIs before allo-SCT and with TKIs before transplant were 98 months (range 1-142) and 42 months (range 1.2-145), respectively ( $P < 0.0001$ ). The two groups were also different in terms of stem cell source: PBSC was given to 309 patients (79%) in the group with TKIs versus 55 patients (66%) in the group without TKIs ( $P = 0.01$ ). More patients received MAC regimen in the group without TKIs before allo-SCT (96% vs. 76%;  $P = 0.001$ ).

Finally, 157 patients received TKIs after transplant at a median of 83 days (range 0-1786) after transplant: 124 received imatinib, 26 dasatinib, 1 nilotinib, and 6 missing cases. In all, 60 patients received TKIs post transplant for primary prophylaxis of relapse.

### Outcome

At five years, OS of the whole population was 46% (95%CI: 41-51). In univariate analysis, TKIs before transplant was the only factor associated with better OS [47% (95%CI: 41-53) vs. 38% (95%CI: 27-48) in patients not receiving TKIs before allo-SCT, respectively;  $P = 0.04$ ] (*Table 1* and *Figure 1*). As aGvHD, cGvHD and TKI post transplant were considered as a time-dependent variable, HR and 95%CI can only be estimated by using Cox model with time-dependent variable (*Online Supplementary Table S2*). In multivariate analysis for OS, 2 factors were favorable factors: TKI administration before allo-SCT

**Table 1.** Univariate analysis for pre-allo-SCT factors at five years.

5 year results		N	LFS (95% CI)	OS (95% CI)	RI (95% CI)	NRM (95% CI)
Patient age	<median		41% [34-48]	50% [42-56]	35% [29-41]	23% [17-29]
	>median		35% [28-41]	42% [34-49]	37% [30-43]	28% [22-34]
	<i>P</i>		0.1	0.09	0.52	0.18
Interval diagnosis to CR1	<median		40% [33-47]	48% [40-55]	35% [28-41]	25% [19-30]
	>median		36% [29-43]	44% [36-51]	38% [31-45]	25% [19-31]
	<i>P</i>		0.47	0.39	0.58	0.65
Interval CR1 to allo-SCT	<median		39% [32-45]	48% [40-54]	39% [32-45]	22% [16-27]
	>median		38% [31-44]	44% [36-51]	34% [27-40]	28% [22-34]
	<i>P</i>		0.77	0.68	0.22	0.09
Interval diagnosis to allo-SCT	<median		39% [32-45]	49% [42-56]	37% [31-43]	23% [18-29]
	>median		37% [30-43]	42% [35-50]	35% [28-41]	28% [22-34]
	<i>P</i>		0.76	0.52	0.57	0.28
Donor type	HLA identical	234	36% [29-42]	45% [37-52]	43% [36-49]	20% [15-26]
	MUD	249	40% [33-46]	47% [39-53]	30% [23-35]	30% [24-36]
	<i>P</i>		0.08	0.69	0.0004	0.09
Conditioning regimen	MAC	375	38% [33-43]	47% [41-52]	34% [28-39]	28% [22-32]
	RIC	98	38% [28-48]	39% [24-53]	44% [33-53]	18% [14-22]
	<i>P</i>		0.27	0.54	0.01	0.14
Extramedullary disease	No	372	38% [32-43]	47% [41-52]	36% [30-41]	26% [21-30]
	Yes	69	39% [26-50]	45% [32-57]	41% [28-52]	21% [16-25]
	<i>P</i>		0.87	0.95	0.3	0.21
TKIs before transplantation	No	83	31% [20-40]	38% [27-48]	50% [38-60]	20% [11-28]
	Yes	390	40% [34-44]	47% [41-53]	33% [28-38]	27% [18-37]
	<i>P</i>		0.06	0.04	0.006	0.27
MRD at transplant	Negative	255	40% [34-47]	48% [40-55]	35% [28-41]	25% [19-30]
	Positive	140	40% [31-48]	48% [39-56]	35% [27-43]	24% [19-30]
	<i>P</i>		0.99	0.82	0.76	0.79
Female donor to male R	No	386	39% [33-44]	47% [41-52]	36% [31-41]	25% [20-29]
	Yes	87	37% [25-47]	43% [31-54]	36% [26-46]	27% [22-31]
	<i>P</i>		0.96	0.65	0.95	0.72
WBC at diagnosis	<median		44% [37-50]	48% [41-55]	30% [24-36]	26% [20-31]
	>median		30% [23-37]	43% [35-50]	44% [36-51]	25% [20-31]
	<i>P</i>		0.009	0.24	0.0009	0.63
Stem cell source	BM	109	38% [29-47]	46% [35-55]	36% [26-44]	26% [17-34]
	PBSC	364	38% [32-43]	46% [39-51]	36% [30-41]	26% [18-34]
	<i>P</i>		0.81	0.62	0.84	0.89
Patient sex	male	260	38% [31-44]	44% [37-51]	37% [31-43]	25% [19-30]
	female	213	38% [31-45]	49% [41-56]	35% [28-41]	27% [21-32]
	<i>P</i>		0.83	0.73	0.58	0.53
ATG	NO	310	37% [31-43]	45% [38-51]	37% [31-42]	25% [20-30]
	YES	155	38% [29-46]	48% [38-56]	35% [27-43]	27% [21-32]
	<i>P</i>		0.62	0.68	0.29	0.68

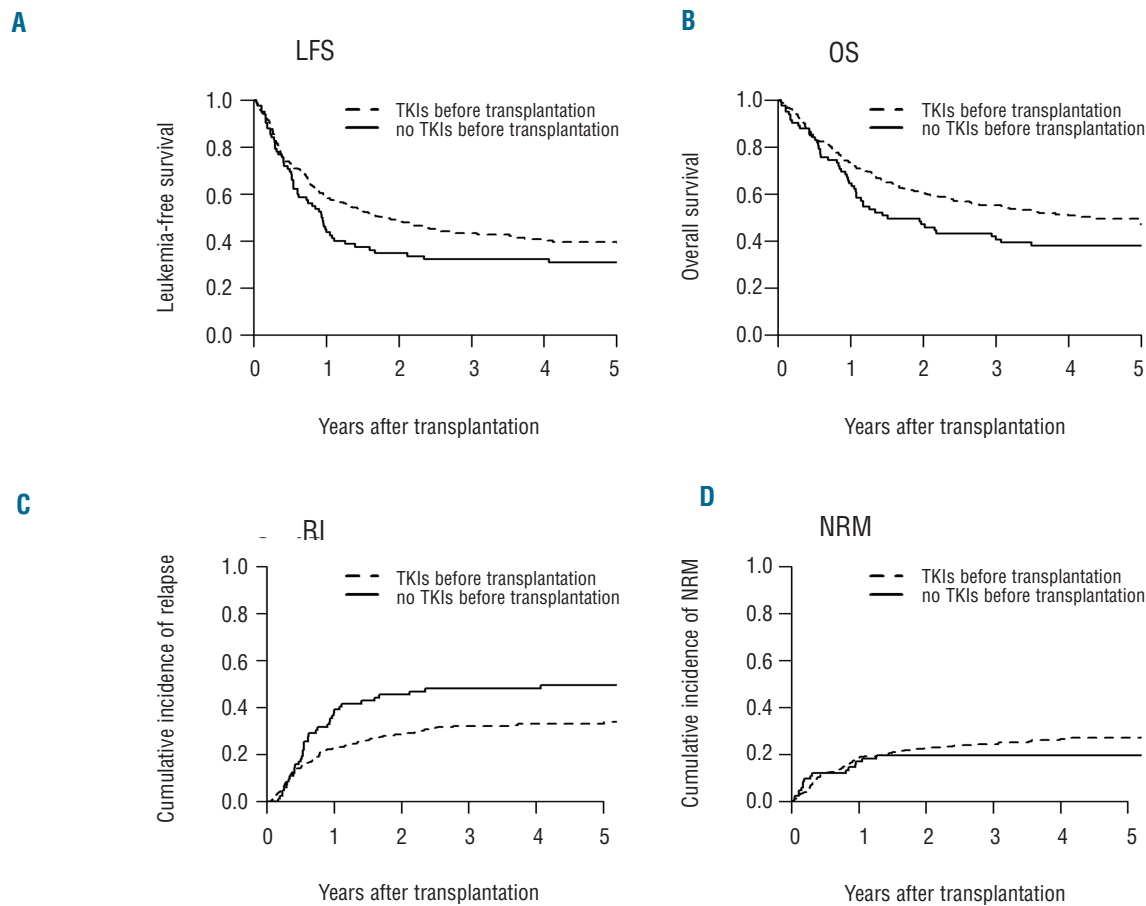
LFS: leukemia-free survival; OS: overall survival; RI: relapse incidence; NRM: non-relapse mortality; CR1: first complete remission; HLA: human leukocyte antigen; MUD: matched unrelated donor; MAC: myeloablative conditioning; RIC: reduced intensity conditioning; TKIs: tyrosine kinase inhibitors; MRD: minimal residual disease; WBC: white blood cells; BM: bone marrow; PBSC: peripheral blood stem cells; ATG: antithymocyte globulin.

(HR=0.68; 95%CI: 0.47-0.98; *P*=0.04), and TKIs given post transplant in prophylaxis of relapse (HR=0.42; 95%CI: 0.23-0.76; *P*=0.004) whereas older age of the patient, a longer interval from diagnosis to transplant, and aGvHD II or over were unfavorable factors (HR=1.02, 95%CI: 1.00-1.03, *P*=0.01; HR=1.002, 95%CI: 1.001-1.004, *P*=0.001; HR=1.43, 95%CI: 1.05-1.94, *P*=0.02, respectively).

Overall LFS at five years was 38% (95%CI: 0.34-0.43). In univariate analysis, higher WBC at diagnosis was significantly associated with lower LFS [30% (95%CI: 23-37) vs. 44% (95%CI: 37-50); *P*=0.014]. Multivariate analysis for LFS identified 2 favorable factors: MUD (HR=0.65; 95%CI: 0.46-0.92; *P*=0.014) and, interestingly, TKIs given post transplant (HR=0.44; 95%CI: 0.26-0.74; *P*=0.002)

(Table 2). Higher WBC at diagnosis and longer interval from diagnosis to transplant were associated with lower LFS (HR=1.002, 95%CI: 1.000-1.003, *P*=0.01, and HR=1.002, 95%CI: 1.001-1.003, *P*=0.003, respectively).

In this cohort, 94 (40%) patients died from disease relapse, with a cumulative incidence of relapse of 36% (95%CI: 0.32-0.41) at five years. In univariate analysis, the cumulative incidence of RI in the group of patients with TKIs before allo-SCT was 33% (95%CI: 28-38) versus 50% (95%CI: 38-60) in the group with no TKIs before transplant (*P*=0.006) (Figure 1). In multivariate analysis, use of TKIs before transplant (HR=0.56; 95%CI: 0.36-0.87; *P*=0.01) and the type of donor (MUD vs. MSD) (HR=0.47; 95%CI: 0.30-0.75; *P*=0.001) were the 2 significant protec-



**Figure 1.** Probability of (A) leukemia-free survival (LFS), (B) overall survival (OS), (C) relapse incidence (RI), and (D) non-relapse mortality (NRM) in allografted patients with Ph<sup>+</sup>ALL in first complete remission with TKIs before allogeneic stem cell transplantation versus without TKIs before allogeneic stem cell transplantation.

tive factors against relapse. Two other “post transplant” factors were associated with lower RI in multivariate analysis: TKIs post transplant in prophylaxis (HR=0.40; 95%CI: 0.21-0.76;  $P=0.01$ ) and aGvHD grade II or over (HR=0.45; 95%CI: 0.29-0.71;  $P=0.001$ ). The use of an RIC regimen (HR=1.69; 95%CI: 1.08-2.65;  $P=0.02$ ) and higher WBC at diagnosis (HR=1.003; 95%CI: 1.002-1.005;  $P=0.0002$ ) remained a significant risk factor for higher RI.

Cumulative incidence of NRM was 26% (95%CI: 0.22-0.30) at five years. Sixty-six (28%) patients died from GvHD, 37 (15.7%) from infections and 8 (3.4%) from veno-occlusive disease. In uni- and multivariate analysis, the use of TKIs before allo-SCT did not influence NRM after transplant [27% (95%CI: 18-37) in patients who received TKIs vs. 20% (95%CI: 11-28) in patients without TKIs;  $P=0.27$ ]. Besides, in univariate analysis, no factor was significantly associated with NRM. In multivariate analysis, aGvHD and cGvHD were unfavorable factors for NRM (HR=2.22; 95%CI: 1.45-3.39;  $P=0.00003$  and HR=3.32; 95%CI: 1.90-5.82;  $P<10^{-4}$ , respectively) as well as age at transplant and time from diagnosis to transplant.

#### Impact of minimal residual disease on outcome

In this study, 395 patients were evaluated for MRD at time of transplant. MRD was determined by RT-PCR in 344 patients (93%), and by flow cytometry in 26 (7%) patients (25 missing cases). The median time for MRD

evaluation prior to transplant was 16 (range 0-80) days. Two hundred and fifty-five (65%) had an MRD of  $10^{-4}$  or under and 140 patients (35%) had an MRD at transplant over  $10^{-4}$ . Interestingly, there were no statistically significant differences in terms of OS, LFS, RI and NRM at five years between the “low-risk” and the “high-risk” MRD groups: LFS, 40% (95%CI: 34-47) versus 40% (95%CI: 31-48) ( $P=0.99$ ); OS, 48% (95%CI: 40-55) versus 48% (95%CI: 39-56, %±4) ( $P=0.82$ ); RI: 35% (95%CI: 28-41) versus 35% (95%CI: 27-43) ( $P=0.76$ ); and NRM, 25% (95%CI: 19-41) versus 24% (95%CI: 19-30) ( $P=0.79$ ), respectively. Also, no correlation was found between use of TKIs before transplant and MRD level at transplant ( $P=0.17$ ).

#### Graft-versus-host disease

The cumulative incidence of grade 2-4 aGvHD at 100 days and cGvHD at five years were 40%±2 and 53%±2, respectively. In univariate analysis, the use of TKIs pre-transplant was significantly associated with a higher rate of aGvHD grade II+ [37% (95%CI: 31%-41%) vs. 24% (95%CI: 15%-34%);  $P=0.04$ ] and of cGvHD [56% (95%CI: 50%-60%) vs. 37% (95%CI: 25%-48%) ( $P=0.008$ )] (Table 3). As TKIs post transplant was considered as a time-dependent variable, HR and 95%CI can only be estimated by using Cox model with time-dependent variable and are indicated in *Online Supplementary*

**Table 2.** Multivariate analysis of leukemia-free survival, overall survival, reduced intensity and non-relapse mortality at 5 years.

Variable	LFS		OS		RI		NRM	
	HR 95%CI	P	HR 95%CI	P	HR 95%CI	P	HR 95%CI	P
TKIs before transplant	0.72 0.51-1.01	0.06	0.68 0.47-0.98	0.04	0.56 0.36-0.87	0.01	1.01 0.57-1.80	0.97
Age at transplant (years)	1.01 1.00-1.02	0.13	1.02 1.00-1.03	0.01	1.00 0.99-1.02	0.86	1.02 1.01-1.04	0.01
WBC at diagnosis > median	1.002 1.000-1.003	0.01	1.000 0.999-1.002	0.77	1.003 1.002-1.005	0.0002	0.999 0.996-1.002	0.62
Interval from diagnosis to transplant	1.002 1.001-1.003	0.003	1.002 1.001-1.004	0.001	1.001 0.999-1.003	0.21	1.002 1.001-1.004	0.003
Female R <i>vs.</i> male R	1.01 0.75-1.35	0.95	0.89 0.65-1.23	0.48	0.98 0.67-1.45	0.93	1.16 0.74-1.83	0.52
Female D to male R	0.87 0.59-1.29	0.49	0.97 0.65-1.47	0.90	0.75 0.45-1.25	0.26	1.09 0.60-1.97	0.79
MUD <i>vs.</i> MSD	0.65 0.46-0.92	0.014	0.81 0.56-1.18	0.27	0.47 0.30-0.75	0.001	1.13 0.67-1.91	0.65
RIC <i>vs.</i> MAC	1.14 0.80-1.62	0.48	0.95 0.64-1.40	0.78	1.69 1.08-2.65	0.02	0.56 0.29-1.06	0.07
ATG	1.19 0.85-1.68	0.31	1.05 0.73-1.52	0.78	1.26 0.79-2.01	0.33	1.07 0.65-1.77	0.79
TKIs post-transplant in prophylaxis*	0.44 0.26-0.74	0.002	0.42 0.23-0.76	0.004	0.40 0.21-0.76	0.01	0.46 0.20-1.10	0.08
Acute GvHD ≥ II*	0.94 0.71-1.25	0.67	1.43 1.05-1.94	0.02	0.45 0.29-0.71	0.001	2.22 1.45-3.39	0.0003
Chronic GvHD*	1.28 0.92-1.78	0.15	1.09 0.78-1.53	0.62	0.65 0.40-1.05	0.08	3.32 1.90-5.82	0.0000

CR1: first complete remission; HLA: human leukocyte antigen; MSD: matched sibling donor; MUD: matched unrelated donor; MAC: myeloablative conditioning; RIC: reduced intensity conditioning; TKIs: tyrosine kinase inhibitors; WBC: white blood cells; BM: bone marrow; PBSC: peripheral blood stem cells; ATG: antithymocyte globulin; GvHD: graft-versus-host disease; R: recipient; D: donor. \*Time-dependant variable.

**Table S3.** However, in multivariate analysis, the use of TKI before transplant after allo-SCT, studied as a time-dependant variable, was not associated with aGvHD or cGvHD, although TKIs post transplant was significantly associated with lower cumulative incidence of aGvHD (HR=0.21; 95%CI: 0.05-0.85;  $P=0.03$ ). ATG was a protective factor of cGvHD (HR=0.57; 95%CI: 0.40-0.82;  $P=0.002$ ).

## Discussion

This study confirms that TKIs are a critical treatment component for patients with adult Ph<sup>+</sup>ALL in whom an allo-SCT is indicated. We found a significantly superior 5-year post-transplant OS due to lower relapse rates in patients who received TKIs before allo-SCT. It is clear that inclusion of imatinib and newer TKIs into the various phases of the treatment of Ph<sup>+</sup>ALL has re-shaped the therapeutic algorithm. Thomas *et al.*<sup>31</sup> showed that the association of imatinib with induction chemotherapy resulted in a 2-year OS reaching 56%, including the group of patients who proceeded to standard MAC allo-SCT. Another single center study showed that incorporation of imatinib into induction chemotherapy with subsequent allo-SCT after MAC achieved a 3-year OS rate of 78%.<sup>22</sup> In a smaller series of 25 patients with Ph<sup>+</sup>ALL in CR1 who received post-transplant imatinib, the 3-year OS reached 62%.<sup>32</sup> Although several earlier studies suggested a benefit for including TKIs in the treatment of Ph<sup>+</sup>ALL, evidence of a long-term survival benefit has only become available more

recently because many of the initial studies concerned early data with short-term follow up. The Japanese Adult Leukaemia Study Group recently reported a higher 3-year OS probability of 65% when combining imatinib-based induction and MAC allo-SCT.<sup>33</sup> However, many of these studies included a significant proportion (up to 39%) of untransplanted patients. Our current study is the largest patient group yet reported to receive allo-SCT in Ph<sup>+</sup>ALL in CR1 in the era of TKIs, with a long-term follow up at five years post allo-SCT. The use of pre-transplant TKIs had the beneficial effect in that all patients were in CR1 before allo-SCT. This is consistent with other observations that TKIs enhance the feasibility of allo-SCT for Ph<sup>+</sup>ALL by increasing remission rates and extending remission durations.<sup>17,18,23,25,31,34-38</sup> In this study, pre-transplant TKI use was an independent variable in multivariate analysis for improving long-term OS in patients transplanted in CR1. This superior OS appeared to be largely related to a lower rate of relapse. Indeed, pre-transplant TKIs were associated with lower RI in both uni- and multivariate analyses. Consistent with other reports, we found that the use of TKIs before transplant was not associated with increased NRM.<sup>27</sup>

In this study, the MRD level at transplant was not predictive for outcome, and did not correlate with TKI treatment. Reports from the pre-imatinib era suggested a close correlation between BCR-ABL transcript levels and outcome.<sup>39,40</sup> In the TKI era, BCR-ABL transcript levels have also been correlated with response in some studies.<sup>41</sup>

**Table 3.** Univariate analysis for acute graft-versus-host disease and chronic graft-versus-host disease at five years.

Variable		aGvHD grade $\geq$ 2	5y cGvHD
Patient age	<median	35% [28-40]	56% [48-63]
	>median	34% [27-39]	49% [42-56]
	<i>P</i>	0.59	0.25
Interval diagnosis to CR1	<median	35% [28-41]	55% [47-61]
	>median	32% [26-38]	50% [42-56]
	<i>P</i>	0.58	0.19
Interval CR1 to allo-SCT	<median	32% [25-38]	54% [46-61]
	>median	35% [29-41]	51% [43-57]
	<i>P</i>	0.35	0.63
Interval diagnosis to allo-SCT	<median	35% [28-40]	54% [46-60]
	>median	33% [27-39]	51% [44-57]
	<i>P</i>	0.82	0.40
Donor type	MSD	33% [26-39]	51% [43-57]
	MUD	35% [29-41]	55% [47-61]
	<i>P</i>	0.43	0.34
Conditioning	MAC	35% [30-41]	55% [49-60]
	RIC	30% [21-41]	43% [31-53]
	<i>P</i>	0.16	0.07
Extramedullary disease	No	35% [30-40]	55% [48-59]
	Yes	27% [16-37]	44% [30-57]
	<i>P</i>	0.13	0.36
TKIs before transplantation	No	24% [15-34]	37% [25-48]
	Yes	37% [31-41]	56% [50-61]
	<i>P</i>	0.04	0.008
MRD at transplant	Negative	35% [28-40]	54% [46-60]
	Positive	34% [26-42]	51% [42-60]
	<i>P</i>	0.91	0.46
Female donor to male R	Yes	35% [29-39]	50% [44-55]
	No	32% [21-41]	63% [50-72]
	p-value	0.50	0.13
WBC at diagnosis x 10 <sup>9</sup> /L	<median	33% [27-39]	56% [49-62]
	>median	35% [28-42]	49% [40-56]
	<i>P</i>	0.65	0.11
Stem cell source	BM	37% [28-46]	46% [34-56]
	PBSC	33% [28-38]	55% [48-61]
	p-value	0.36	0.21
Sex	male	34% [28-39]	56% [49-62]
	female	34% [27-40]	48% [40-55]
	<i>P</i>	0.88	0.16
ATG	NO	35% [29-40]	56% [50-62]
	YES	33% [25-40]	45% [35-53]
	<i>P</i>	0.84	0.09

cGvHD: chronic graft-versus-host disease; CR1: first complete remission; HLA: human leukocyte antigen; MUD: matched unrelated donor; MAC: myeloablative conditioning; RIC: reduced intensity conditioning; TKIs: tyrosine kinase inhibitors; MRD: minimal residual disease; WBC: white blood cells; BM: bone marrow; PBSC: peripheral blood stem cells; ATG: antithymocyte globulin.

However, long-term outcome in relation to BCR-ABL response to any given therapeutic intervention is difficult to interpret. Unlike chronic myeloid leukemia, there is no clear agreement on what represents a therapeutically important BCR-ABL response at a given time point during Ph<sup>+</sup> ALL therapy. Lee *et al.*<sup>20</sup> showed that a 3-log reduction in BCR-ABL transcripts after one month of imatinib treatment predicted a reduced risk of relapse. In contrast, Yanada *et al.*<sup>42</sup> observed no association between rapid achievement of BCR-ABL negativity and long-term outcome. In the present study, a 0.01% threshold was used to define MRD positivity, as widely used.<sup>45,44</sup> However, using this threshold, we found no association between the MRD level before transplant and allo-SCT outcome. Several factors may account for this negative finding. First, despite some standardization in monitoring BCR-ABL fusion transcripts, this registry-based study included diverse methodologies for MRD determination. However, MRD was

determined mainly by PCR for detection of chimeric mRNA arising from BCR-ABL1 genomic recombination in 344 patients (93%). This assay has been widely used to monitor response and guide therapeutic choices.<sup>20,40,42</sup> Our results are quite consistent with two recently published studies. Schultz *et al.* reported 5-year outcomes of imatinib plus intensive chemotherapy in 91 children (age 1-21 years) with and without allogeneic BMT. MRD levels at the end of the second consolidation also did not predict outcome in those patients receiving either an unrelated or related donor BMT from all cohorts with 77±13% 5-year EFS for MRD 0.01% or under (n=14) compared with 40±22% for MRD over 0.01% (n=5; *P*=0.18).<sup>45</sup> Bachanova *et al.* reported the outcome of 197 Ph<sup>+</sup>ALL patients who underwent allo-SCT. MRD before transplant, in the whole cohort, as determined by FISH and/or PCR, had no impact on relapse (*P*=0.13), disease-free survival (*P*=0.56) or overall survival (*P*=0.66). In sub-group analysis, patients receiv-

ing pre-HCT TKI in combination with MRD negativity pre-RIC HCT had superior OS (55%) compared with a similar MRD population after MAC (33%;  $P=0.0042$ ).<sup>46</sup> In our study, the number of patients in the RIC group who did not receive TKIs before allo-SCT ( $n=6$ ) did not allow a subgroup analysis to be made. We can also hypothesize that, since TKIs induce profound molecular responses, a lower cutoff might have been more informative for correlating MRD with outcome. The lower relapse incidence seen in patients given pre-transplant TKI probably reflected a more profound molecular response in this patient group. It is also possible that post-transplant interventions with TKIs controlled allo-SCT patients with a higher MRD load until the development of the immune-mediated graft-*versus*-leukemia (GvL) effect. MRD monitoring of BCR-ABL fusion-transcript after allo-SCT for Ph<sup>+</sup> ALL could shed some light on this possibility.<sup>47</sup>

The issue of whether, and under what circumstances, TKIs should be administered after allo-SCT remains unresolved. We found a significant benefit of prophylactic TKIs on LFS, OS and RI. Study design prevented a full analysis of treatment and tolerability of TKI administration post allo-SCT. However, previous data suggest that a relatively short exposure to TKIs may control residual leukemia prior to the establishment of a GvL effect. Pfeifer *et al.*<sup>30</sup> recently compared prophylactic with MRD-triggered imatinib after allo-SCT for Ph<sup>+</sup> ALL. Prophylactic imatinib significantly reduced the incidence of molecular recurrence after allo-SCT compared with MRD-triggered imatinib (40% vs. 69%;  $P=0.046$ ). Interestingly, 5-year survival in both interventional groups was high (80% and 74.5%), despite premature discontinuation of imatinib in the majority of patients because of poor tolerability. Ram *et al.*<sup>32</sup> reported that imatinib, given after RIC allo-SCT, did not significantly affect relapse. Taken together the results suggest that prophylactic TKIs may improve outcome, but further confirmation is needed. However, patients we identified as high risk for relapse (higher WBC, an RIC regimen, and matched sibling donor SCT) might especially benefit from post-transplant TKI. Despite the potential of RIC regimen recipients to relapse, we found no difference in OS and LFS between patients who received an RIC regimen or a MAC regimen. This confirms that RIC is a valid option for patients ineligible for MAC, as shown by Bachanova *et al.*<sup>46</sup>

Interestingly, pre-transplant TKI was associated with a higher cumulative incidence of aGvHD [37% (95%CI: 31%-41%) vs. 24% (95%CI: 15%-34%);  $P=0.04$ ] in univariate analysis. Although imatinib can be beneficial in steroid-refractory cGvHD,<sup>48,49</sup> the main imatinib side-effects are edema, skin rashes and diarrhea.<sup>50</sup> The pathophysiology of these manifestations is still unknown. We can hypothesize that the association of TKIs and chemotherapy before HSCT can be deleterious and induce primary lesions. However, TKI pre-transplant was not associated with aGvHD in multivariate analysis (HR=1.52; 95%CI: 0.92-2.52;  $P=0.010$ ). Whether TKIs are or are not deleterious when used before transplantation deserves further investigation. In multivariate analysis, TKIs post-HSCT were associated with a lower incidence of GvHD. This interesting issue of the potential beneficial impact of TKIs post transplant will need to be confirmed since the bias of patient selection by the physician for giving TKIs may have interfered with this result.

In conclusion, over the past decade, TKI administration before allo-SCT has significantly improved the long-term allo-SCT outcome of adult Ph<sup>+</sup>ALL. Prospective studies will be of great interest to further confirm the potential benefit of the prophylactic use of TKIs in the post-transplant setting.

#### Funding

This work was supported by an educational grant from Novartis, France.

#### Acknowledgments

We thank all European Group for Blood and Marrow Transplantation (EBMT) participating centers and national registries for contributing patients to the study and data managers for their superb work (see Online Supplementary Appendix). Supplementary information is available at the EBMT Web site. This work was presented during the Presidential Session of the European Group for Blood and Marrow Transplantation annual meeting, April 6-10, 2013, London, UK.

#### Authorship and Disclosures

Information on authorship, contributions, and financial & other disclosures was provided by the authors and is available with the online version of this article at [www.haematologica.org](http://www.haematologica.org).

## References

- Larson RA. Management of acute lymphoblastic leukemia in older patients. *Semin Hematol.* 2006;43(2):126-133.
- Roberts KG, Li Y, Payne-Turner D, et al. Targetable kinase-activating lesions in Ph-like acute lymphoblastic leukemia. *N Engl J Med.* 2014;371(11):1005-1015.
- Secker-Walker LM, Craig JM, Hawkins JM, Hoffbrand AV. Philadelphia positive acute lymphoblastic leukemia in adults: age distribution, BCR breakpoint and prognostic significance. *Leukemia.* 1991;5(3):196-199.
- Moorman AV, Harrison CJ, Buck GA, et al. Karyotype is an independent prognostic factor in adult acute lymphoblastic leukemia (ALL): analysis of cytogenetic data from patients treated on the Medical Research Council (MRC) UKALLXII/Eastern Cooperative Oncology Group (ECOG) 2993 trial. *Blood.* 2007;109(8):3189-3197.
- Ravandi F, Kebriaei P. Philadelphia chromosome-positive acute lymphoblastic leukemia. *Hematol Oncol Clin North Am.* 2009;23(5):1043-1063.
- Gruber F, Mustjoki S, Porkka K. Impact of tyrosine kinase inhibitors on patient outcomes in Philadelphia chromosome-positive acute lymphoblastic leukaemia. *Br J Haematol.* 2009;145(5):581-597.
- Ottmann O, Dombret H, Martinelli G, et al. Dasatinib induces rapid hematologic and cytogenetic responses in adult patients with Philadelphia chromosome positive acute lymphoblastic leukemia with resistance or intolerance to imatinib: interim results of a phase 2 study. *Blood.* 2007;110(7):2309-2315.
- Kantarjian H, Giles F, Wunderle L, et al. Nilotinib in imatinib-resistant CML and Philadelphia chromosome-positive ALL. *N Engl J Med.* 2006;354(24):2542-2551.
- Foa R, Vitale A, Vignetti M, et al. Dasatinib as first-line treatment for adult patients with Philadelphia chromosome-positive acute lymphoblastic leukemia. *Blood.* 2011;118(25):6521-6528.
- Rea D, Legros L, Raffoux E, et al. High-dose imatinib mesylate combined with vincristine and dexamethasone (DIV regimen) as induction therapy in patients with resistant Philadelphia-positive acute lymphoblastic leukemia and lymphoid blast crisis of chronic myeloid leukemia. *Leukemia.* 2006;20(3):400-403.
- Dombret H, Gabert J, Boiron JM, et al. Outcome of treatment in adults with Philadelphia chromosome-positive acute



- lymphoblastic leukemia--results of the prospective multicenter LALA-94 trial. *Blood*. 2002;100(7):2357-2366.
12. Chao NJ, Blume KG, Forman SJ, Snyder DS. Long-term follow-up of allogeneic bone marrow recipients for Philadelphia chromosome-positive acute lymphoblastic leukemia. *Blood*. 1995;85(11):3353-3354.
  13. Barrett AJ, Horowitz MM, Ash RC, et al. Bone marrow transplantation for Philadelphia chromosome-positive acute lymphoblastic leukemia. *Blood*. 1992;79(11):3067-3070.
  14. Snyder DS, Nademanee AP, O'Donnell MR, et al. Long-term follow-up of 23 patients with Philadelphia chromosome-positive acute lymphoblastic leukemia treated with allogeneic bone marrow transplant in first complete remission. *Leukemia*. 1999;13(12):2053-2058.
  15. Laport GG, Alvarnas JC, Palmer JM, et al. Long-term remission of Philadelphia chromosome-positive acute lymphoblastic leukemia after allogeneic hematopoietic cell transplantation from matched sibling donors: a 20-year experience with the fractionated total body irradiation-etoposide regimen. *Blood*. 2008;112(3):903-909.
  16. Ottmann OG, Pfeifer H. Management of Philadelphia chromosome-positive acute lymphoblastic leukemia (Ph+ ALL). *Hematology Am Soc Hematol Educ Program*. 2009;371-381.
  17. Fielding AK, Rowe JM, Richards SM, et al. Prospective outcome data on 267 unselected adult patients with Philadelphia chromosome-positive acute lymphoblastic leukemia confirms superiority of allogeneic transplantation over chemotherapy in the pre-imatinib era: results from the International ALL Trial MRC UKALLXII/ECOG2993. *Blood*. 2009;113(19):4489-4496.
  18. Bassan R, Rossi G, Pogliani EM, et al. Chemotherapy-phased imatinib pulses improve long-term outcome of adult patients with Philadelphia chromosome-positive acute lymphoblastic leukemia: Northern Italy Leukemia Group protocol 09/00. *J Clin Oncol*. 2010;28(22):3644-3652.
  19. Mohty M, Labopin M, Volin L, et al. Reduced-intensity versus conventional myeloablative conditioning allogeneic stem cell transplantation for patients with acute lymphoblastic leukemia: a retrospective study from the European Group for Blood and Marrow Transplantation. *Blood*. 2010;116(22):4439-4443.
  20. Lee S, Kim DW, Cho B, et al. Risk factors for adults with Philadelphia-chromosome-positive acute lymphoblastic leukaemia in remission treated with allogeneic bone marrow transplantation: the potential of real-time quantitative reverse-transcription polymerase chain reaction. *Br J Haematol*. 2003;120(1):145-153.
  21. Yanada M, Takeuchi J, Sugiura I, et al. High complete remission rate and promising outcome by combination of imatinib and chemotherapy for newly diagnosed BCR-ABL-positive acute lymphoblastic leukemia: a phase II study by the Japan Adult Leukemia Study Group. *J Clin Oncol*. 2006;24(3):460-466.
  22. Lee S, Kim YJ, Min CK, et al. The effect of first-line imatinib interim therapy on the outcome of allogeneic stem cell transplantation in adults with newly diagnosed Philadelphia chromosome-positive acute lymphoblastic leukemia. *Blood*. 2005;105(9):3449-3457.
  23. de Labarthe A, Rousselot P, Huguët-Rigal F, et al. Imatinib combined with induction or consolidation chemotherapy in patients with de novo Philadelphia chromosome-positive acute lymphoblastic leukemia: results of the GRAAPH-2003 study. *Blood*. 2007;109(4):1408-1413.
  24. Tanguy-Schmidt A, Rousselot P, Chalandon, et al. Long-term follow-up of the imatinib GRAAPH-2003 study in newly diagnosed patients with de novo Philadelphia chromosome-positive acute lymphoblastic leukemia: a GRAALL study. *Biol Blood Marrow Transplant*. 2013;19(1):150-155.
  25. Ribera JM, Oriol A, Gonzalez M, et al. Concurrent intensive chemotherapy and imatinib before and after stem cell transplantation in newly diagnosed Philadelphia chromosome-positive acute lymphoblastic leukemia. Final results of the CSTIBES02 trial. *Haematologica*. 2010;95(1):87-95.
  26. Wassmann B, Pfeifer H, Stadler M, et al. Early molecular response to posttransplantation imatinib determines outcome in MRD+ Philadelphia-positive acute lymphoblastic leukemia (Ph+ ALL). *Blood*. 2005;106(2):458-463.
  27. Carpenter PA, Snyder DS, Flowers ME, et al. Prophylactic administration of imatinib after hematopoietic cell transplantation for high-risk Philadelphia chromosome-positive leukemia. *Blood*. 2007;109(7):2791-2793.
  28. Bacigalupo A, Ballen K, Rizzo D, et al. Defining the intensity of conditioning regimens: working definitions. *Biol Blood Marrow Transplant*. 2009;15(12):1628-1633.
  29. Bruggemann M, Schrauder A, Raff T, et al. Standardized MRD quantification in European ALL trials: proceedings of the Second International Symposium on MRD assessment in Kiel, Germany, 18-20 September 2008. *Leukemia*. 2010;24(3):521-535.
  30. Pfeifer H, Wassmann B, Bethge W, et al. Randomized comparison of prophylactic and minimal residual disease-triggered imatinib after allogeneic stem cell transplantation for BCR-ABL1-positive acute lymphoblastic leukemia. *Leukemia*. 2013;27(6):1254-1262.
  31. Thomas DA, Faderl S, Cortes J, et al. Treatment of Philadelphia chromosome-positive acute lymphocytic leukemia with hyper-CVAD and imatinib mesylate. *Blood*. 2004;103(12):4396-4407.
  32. Ram R, Storb R, Sandmaier BM, et al. Non-myeloablative conditioning with allogeneic hematopoietic cell transplantation for the treatment of high-risk acute lymphoblastic leukemia. *Haematologica*. 2011;96(8):1113-1120.
  33. Mizuta S, Matsuo K, Yagasaki F, et al. Pre-transplant imatinib-based therapy improves the outcome of allogeneic hematopoietic stem cell transplantation for BCR-ABL-positive acute lymphoblastic leukemia. *Leukemia*. 2011;25(1):41-47.
  34. Fielding AK, Goldstone AH. Allogeneic haematopoietic stem cell transplant in Philadelphia-positive acute lymphoblastic leukaemia. *Bone Marrow Transplant*. 2008;41(5):447-453.
  35. Lee KH, Lee JH, Choi SJ, et al. Clinical effect of imatinib added to intensive combination chemotherapy for newly diagnosed Philadelphia chromosome-positive acute lymphoblastic leukemia. *Leukemia*. 2005;19(9):1509-1516.
  36. Wassmann B, Pfeifer H, Goekbuget N, et al. Alternating versus concurrent schedules of imatinib and chemotherapy as front-line therapy for Philadelphia-positive acute lymphoblastic leukemia (Ph+ ALL). *Blood*. 2006;108(5):1469-1477.
  37. Yanada M, Matsuo K, Suzuki T, Naoe T. Allogeneic hematopoietic stem cell transplantation as part of postremission therapy improves survival for adult patients with high-risk acute lymphoblastic leukemia: a metaanalysis. *Cancer*. 2006;106(12):2657-2663.
  38. Shimoni A, Kroger N, Zander AR, et al. Imatinib mesylate (STI571) in preparation for allogeneic hematopoietic stem cell transplantation and donor lymphocyte infusions in patients with Philadelphia-positive acute leukemias. *Leukemia*. 2003;17(2):290-297.
  39. Preudhomme C, Henic N, Cazin B, et al. Good correlation between RT-PCR analysis and relapse in Philadelphia (Ph1)-positive acute lymphoblastic leukemia (ALL). *Leukemia*. 1997;11(2):294-298.
  40. Pane F, Cimino G, Izzo B, et al. Significant reduction of the hybrid BCR/ABL transcripts after induction and consolidation therapy is a powerful predictor of treatment response in adult Philadelphia-positive acute lymphoblastic leukemia. *Leukemia*. 2005;19(4):628-635.
  41. Stein AS, Palmer JM, O'Donnell MR, et al. Reduced-intensity conditioning followed by peripheral blood stem cell transplantation for adult patients with high-risk acute lymphoblastic leukemia. *Biol Blood Marrow Transplant*. 2009;15(11):1407-1414.
  42. Yanada M, Sugiura I, Takeuchi J, et al. Prospective monitoring of BCR-ABL1 transcript levels in patients with Philadelphia chromosome-positive acute lymphoblastic leukaemia undergoing imatinib-combined chemotherapy. *Br J Haematol*. 2008;143(4):503-510.
  43. Raff T, Gokbuget N, Luschen S, et al. Molecular relapse in adult standard-risk ALL patients detected by prospective MRD monitoring during and after maintenance treatment: data from the GMALL 06/99 and 07/03 trials. *Blood*. 2007;109(3):910-915.
  44. Mortuza FY, Papaioannou M, Moreira IM, et al. Minimal residual disease tests provide an independent predictor of clinical outcome in adult acute lymphoblastic leukemia. *J Clin Oncol*. 2002;20(4):1094-1104.
  45. Schultz KR, Carroll A, Heerema NA, et al. Long-term follow-up of imatinib in pediatric Philadelphia chromosome-positive acute lymphoblastic leukemia: Children's Oncology Group study AALL0031. *Leukemia*. 2014;28(7):1467-1471.
  46. Bachanova V, Marks DI, Zhang MJ, et al. Ph+ ALL patients in first complete remission have similar survival after reduced intensity and myeloablative allogeneic transplantation: impact of tyrosine kinase inhibitor and minimal residual disease. *Leukemia*. 2014;28(3):658-665.
  47. Radich J, Gehly G, Lee A, et al. Detection of bcr-abl transcripts in Philadelphia chromosome-positive acute lymphoblastic leukemia after marrow transplantation. *Blood*. 1997;89(7):2602-2609.
  48. Olivieri A, Cimminiello M, Corradini P, et al. Long-term outcome and prospective validation of NIH response criteria in 39 patients receiving imatinib for steroid-refractory chronic GVHD. *Blood*. 2013;122(25):4111-4118.
  49. Magro L, Mohty M, Catteau B, et al. Imatinib mesylate as salvage therapy for refractory sclerotic chronic graft-versus-host disease. *Blood*. 2009;114(3):719-722.
  50. Deininger MW, O'Brien SG, Ford JM, Druker BJ. Practical management of patients with chronic myeloid leukemia receiving imatinib. *J Clin Oncol*. 2003;21(8):1637-1647.