



LUND UNIVERSITY

Weight and body mass index in relation to irradiated volume and to overall survival in patients with oropharyngeal cancer: a retrospective cohort study

Ottosson, Sandra; Soderstrom, Karin; Kjellén, Elisabeth; Nilsson, Per; Zackrisson, Bjorn; Laurell, Goran

Published in:
Radiation Oncology

DOI:
[10.1186/1748-717X-9-160](https://doi.org/10.1186/1748-717X-9-160)

2014

[Link to publication](#)

Citation for published version (APA):

Ottosson, S., Soderstrom, K., Kjellén, E., Nilsson, P., Zackrisson, B., & Laurell, G. (2014). Weight and body mass index in relation to irradiated volume and to overall survival in patients with oropharyngeal cancer: a retrospective cohort study. *Radiation Oncology*, 9, Article 160. <https://doi.org/10.1186/1748-717X-9-160>

Total number of authors:
6

General rights

Unless other specific re-use rights are stated the following general rights apply:
Copyright and moral rights for the publications made accessible in the public portal are retained by the authors and/or other copyright owners and it is a condition of accessing publications that users recognise and abide by the legal requirements associated with these rights.

- Users may download and print one copy of any publication from the public portal for the purpose of private study or research.
- You may not further distribute the material or use it for any profit-making activity or commercial gain
- You may freely distribute the URL identifying the publication in the public portal

Read more about Creative commons licenses: <https://creativecommons.org/licenses/>

Take down policy

If you believe that this document breaches copyright please contact us providing details, and we will remove access to the work immediately and investigate your claim.

LUND UNIVERSITY

PO Box 117
221 00 Lund
+46 46-222 00 00

RESEARCH

Open Access

Weight and body mass index in relation to irradiated volume and to overall survival in patients with oropharyngeal cancer: a retrospective cohort study

Sandra Ottosson^{1*}, Karin Söderström², Elisabeth Kjellén³, Per Nilsson³, Björn Zackrisson² and Göran Laurell⁴

Abstract

Background: Weight loss is a common problem in patients with Squamous Cell Carcinoma of the Head and Neck (SCCHN) treated with radiotherapy (RT). The aims of the present study were to determine if treated volume (TV), as a measure of the radiation dose burden, can predict weight loss in patients with oropharyngeal cancer and to analyze weight loss and body mass index (BMI) in the same patient group in relation to 5-year overall survival.

Methods: The ARTSCAN trial is a prospective, randomized, multicenter trial in patients with SCCHN. Nutritional data from the ARTSCAN trial were analyzed retrospectively using univariate and multivariate statistical methods based on information on percentage weight loss from the start of RT up to five months after the termination of RT (study cohort 1, n = 232) and information on patients' BMI at the start of RT (study cohort 2, n = 203). TV was defined as the volume of the patient receiving at least 95% of the prescribed dose. TV_{64.6 Gy} encompasses macroscopic tumor and TV_{43.7 Gy} elective lymph nodes of the neck.

Results: TV_{64.6 Gy} and TV_{43.7 Gy} were both significantly correlated with higher weight loss up to five months after the termination of RT in study cohort 1 ($p < 0.001$ for both). BMI at the start of RT was shown to be a prognostic factor for 5-year overall survival in study cohort 2 but weight loss was not. The hazard ratios and 95% confidence intervals were 3.78 (1.46–9.75) and 2.57 (1.43–4.62) in patients with underweight and normal weight, respectively.

Conclusions: TV can predict weight loss during RT in patients with oropharyngeal cancer regardless of clinical stage. A high BMI ($>25 \text{ kg/m}^2$) at the start of RT is positively associated with survival in patients with oropharyngeal cancer.

Keywords: Oropharyngeal cancer, Treated volume, Weight loss, Body mass index, Survival

Background

Weight loss is a common problem in patients with Squamous Cell Carcinoma of the Head and Neck (SCCHN) and this weight loss has a number of different etiologies [1]. The tumor itself can affect nutritional status both by its location and through metabolic alterations [2-5]. In addition, the toxic effects of oncologic treatment such as radiotherapy (RT) alone or in combination with surgery

and/or anticancer drugs [6,7] can affect food intake [8-11] and thus increase the risk of weight loss [8,9,11-13].

Weight loss is one of the main characteristics of malnutrition [14]. However, not all patients with weight loss will develop malnutrition. In clinical practice, weight loss can be used together with body mass index (BMI) and information about eating difficulties to find patients at risk of nutritional deterioration [15]. It is recommended that nutritional screening should be initiated before the start of RT to find patients at risk and in need of nutritional interventions. Because the treatment for SCCHN can lead to further nutritional impairment, predictive factors for anticipated weight loss and nutritional decline during RT might

* Correspondence: sandra.ottosson@kost.umu.se

¹Department of Clinical Sciences, Otorhinolaryngology, Umeå University, Umeå, Sweden

Full list of author information is available at the end of the article

be important pieces of information that can be obtained during patient history. Research results available today on patients with SCCHN suggest that tumor site, clinical stage, and use of chemo-radiotherapy are factors that can predict a significant weight loss during RT [16-18]. When assessing the different tumor sites, patients with oropharyngeal cancer have been shown to lose more weight compared to patients with tumors at other sub-sites [19-21]. In recent years, a number of publications have addressed the dose-volume relationship in different organs at risk (OARs) that affect swallowing function and subsequently might lead to weight loss [22-25]. This has also been shown for different tumor sub-sites, e.g. oropharyngeal cancer [26-29].

The ARTSCAN trial is a Swedish multicenter, randomized, controlled clinical trial in patients with SCCHN comparing conventional fractionation (CF) with accelerated fractionation (AF) [30]. In previously published results from the ARTSCAN trial, we found that patients with oropharyngeal cancer lost significantly more weight during and after RT compared to patients with tumors of the larynx and oral cavity [19]. In the present study, we investigated the relationship between the treated volume (TV) and weight loss in a homogenous cohort at risk of weight loss who were treated with RT. TV was used as a measure of the radiation dose burden as defined by the International Commission on Radiation Units & Measurements (ICRU, reports 50 and 62) [31,32]. This study was performed retrospectively using nutritional data from the subgroup of patients with oropharyngeal cancer in the ARTSCAN trial.

Earlier studies have investigated the relationship between different nutrition-related factors and survival in patients with SCCHN [18,33-42]. The results tend to vary, but the trend in the data suggests that BMI might have a more prominent role in survival than weight loss per se. Both McRackan et al. [40] and Pai et al. [33] showed, for example, that patients with SCCHN who had an initial BMI over 25 kg/m² had a higher chance of survival. The research available for weight loss suggests that weight loss prior to treatment [35-37] or weight loss in patients with recurrent disease [38,39] might have a negative influence on survival. Given the current research, the relation between BMI and survival needs to be further established in different subgroups of SCCHN. In addition, the correlation between survival and weight loss during RT needs more thorough investigation. In the present study, this is explored in the same cohort of patients with oropharyngeal cancer as described above.

Objectives

The aims of the present study were to:

- Analyze if TV can predict weight loss in patients with oropharyngeal cancer and thereby provide information on patients at risk of malnutrition and in need of special nutritional surveillance.
- Analyze weight loss and BMI in patients with oropharyngeal cancer in relation to 5-year overall survival.

Methods

Patients

This nutritional study is based on data from the ARTSCAN trial conducted between the years 1998 and 2006. Seven hundred and fifty patients (age >18 years) with non-distant metastatic SCCHN, i.e. cancer in the oral cavity, oropharynx, hypopharynx, or larynx, were included in the ARTSCAN trial at 12 treatment centers across Sweden. Patients specifically with oropharyngeal cancer were selected for the present study (n = 357). All patients gave written consent before randomization, and the study was approved by the local ethics committees (Dnr 07-023 M/FEK98-139). For more information about the ARTSCAN trial, see Zackrisson et al. [30].

Data

Medical, treatment, and follow-up data were collected prospectively in the ARTSCAN trial up to 5 years after the termination of RT in surviving patients. After 5 years, survival was followed through the Swedish population registry. Details about the patient material, methods, and structure for data collection in the ARTSCAN trial are described elsewhere [30,43].

Radiotherapy

All patients received CT-based three-dimensional conformal radiotherapy (3-DCRT) and/or intensity-modulated radiotherapy (IMRT) with dose prescriptions according to the recommendations of the ICRU [31,32]. A more detailed presentation of the RT and the quality assurance process of the trial have been reported earlier [30,43]. In short, 68 Gy was prescribed to the known tumor in the oropharynx and metastatic cervical lymph node/nodes. An additional adjuvant dose of 46 Gy was prescribed to elective lymph nodes of the neck.

Absorbed doses and volumes TV, as a measure of the radiation dose burden, was defined as the volume (cm³) of the patient receiving at least 95% of the prescribed dose [31,32]. TV_{64.6 Gy} encompasses macroscopic tumor and TV_{43.7 Gy} elective lymph nodes of the neck.

Nutritional data

Weight was measured every week during RT, at 4-6 weeks after RT, every 3 months for the first 2 years after RT, and thereafter every 6 months up to 5 years. In the

present study, percent weight change up to 5 months after the termination of RT was calculated using weight at the start of RT as the reference point. This time-period for weight loss was chosen on the basis of previously published results from the ARTSCAN trial showing a nadir of weight loss for the entire cohort at 5 months after the termination of RT [19]. Weight loss was used either as a continuous variable or was dichotomized (<10% and ≥10%). Patients with ≥10% weight loss were defined as at risk of nutritional deterioration [44].

Height was gathered through the medical records and used to calculate BMI (kg/m²). The following cut-off values were used in the analyses: underweight BMI < 20 kg/m² (or BMI < 22 kg/m² if ≥70 years of age), normal weight BMI 20–25 kg/m² (or BMI 22–27 kg/m² if ≥70 years of age), and overweight/obesity BMI >25 kg/m² (or BMI >27 kg/m² if ≥70 years of age) [15,45].

The patients could be classified into the following three groups according to type of nutritional support administered during the study: oral intake (with or without nutritional counseling and/or oral nutritional supplements), tube feeding (TF) using nasogastric feeding tube or percutaneous endogastric gastrostomy, and parenteral nutrition. The nutritional support was administered when needed according to local guidelines at each participating center. Use of TF and parenteral nutrition was registered in the study protocol, and information on the use of TF at the start and end of RT was used in the present study.

Statistical analysis

The Statistical Package for the Social Sciences (SPSS) version 21.0 and R version 2.15.2 software packages were used for the statistical analyses. All tests were two-sided and a *p*-value less than 0.05 was considered significant.

The independent samples *t*-test, one-way between-groups ANOVA, and Fisher's exact test were used for univariate analyses. A multiple linear regression analysis was used as the multivariate alternative, and variables that were statistically significant in the univariate analyses were included as the independent variables in the model. The dependent variable (weight change) was numerical and the independent variables were either numerical or dichotomized. The unstandardized regression coefficients (B) represent an increase (positive values) or a decrease (negative values) in weight (percentage points). A regression model based on cubic splines was used to illustrate the nonlinear correlation between weight loss and TV [46].

For the survival analyses, time to death was calculated from the start of RT up to 5 years in surviving patients. The Kaplan–Meier estimators for the BMI and weight groups were compared using the log rank test. The Cox proportional hazard model was used to calculate the hazard

ratios (HRs) and their 95% confidence intervals (CI). The variable of interest (BMI) was included in the adjusted model together with potential confounder variables related to patient, tumour, and treatment characteristics. Variables that did not meet the assumption of proportional hazard were used as strata in the model.

Results

Eligibility and patient characteristics

Three hundred and fifty-seven patients were diagnosed with oropharyngeal cancer in the ARTSCAN trial. A per protocol analysis was performed, and percent weight change between the start of RT up to 5 months after the termination of RT was available for 232 patients (65.0%), and these patients were referred to as study cohort 1. The patients not included in this cohort were due to death (*n* = 23), loss of follow-up or residual or recurrent disease (*n* = 30), or missing data (*n* = 72). BMI at the start of RT was available for 203 patients (56.9%) and this group was named study cohort 2. Patient, tumor, and treatment characteristics for all patients with oropharyngeal cancer and for patients in study cohorts 1 and 2 are presented in Table 1.

Predictive factors for weight loss

Weight change from the start of RT up to 5 months after the termination of RT in study cohort 1 (*n* = 232) was analyzed together with tumor- and treatment-related factors in univariate analyses (Table 2). The three factors significantly related to weight loss were the use of TF at the start of RT (*p* = 0.024), TV_{64.6 Gy} (*p* < 0.001), and TV_{43.7 Gy} (*p* < 0.001).

Information about TF use at the start of RT was available for 230 patients (missing *n* = 2). Twelve patients (5.2%) received TF at the start of RT. Information about TV was available for 230 patients (missing *n* = 2). The average volumes for TV_{64.6 Gy} and TV_{43.7 Gy} were 580 cm³ ± 265 cm³ and 1475 cm³ ± 592 cm³, respectively.

A multiple linear regression model was used to analyze how much of the variation in weight loss that could be explained by the variables statistically significant in the univariate analyses as well as the relation between the dependent variable (weight loss up to 5 months after the termination of RT) and each of the independent variables. Because of the close relation between TV_{64.6 Gy} and TV_{43.7 Gy}, two different analyses were performed. In the first analysis, TF at the start of RT (yes/no) and TV_{64.6 Gy} (numerical) were included in the model (*n* = 228). Clinical stage (I + II or III + IV) was also included as a confounding factor for TV. The coefficient of determination (*R*²) was 0.084 (*p* < 0.001). The use of TF at the start of RT and TV_{64.6 Gy} were shown to be significantly predictive for weight loss up to 5 months. Patients without TF at the start of RT lost more weight than patients with TF (*B* =

Table 1 Characteristics of patients with oropharyngeal cancer (n = 357) from the ARTSCAN trial as well as for study cohorts 1 (n = 232) and 2 (n = 203)

	Patients with oropharyngeal cancer, n (%)	Study cohort 1, n (%)	Study cohort 2, n (%)
Age			
Median (min, max)	58 (32, 86)	57 (32, 86)	57 (32, 86)
<65 years	275 (77.0)	184 (79.3)	160 (78.8)
≥65 years	82 (23.0)	48 (20.7)	43 (21.2)
Sex			
Male	267 (74.8)	173 (74.6)	154 (75.9)
Female	90 (25.2)	59 (25.4)	49 (24.1)
Clinical stage			
I	10 (2.8)	8 (3.4)	9 (4.4)
II	20 (5.6)	16 (6.9)	13 (6.4)
III	84 (23.5)	54 (23.3)	41 (20.2)
IV	243 (68.1)	154 (66.4)	140 (69.0)
Surgery			
Yes	166 (46.5)	103 (44.4)	106 (52.2)
No	191 (53.5)	129 (55.6)	97 (47.8)
Conventional fractionation			
Accelerated fractionation	179 (50.1)	115 (49.6)	97 (47.8)
Number of patients	n = 357	n = 232	n = 203

4.946, $p = 0.03$), and patients treated with larger $TV_{64.6 \text{ Gy}}$ had a significantly greater weight loss up to 5 months after RT ($B = -0.008$, $p < 0.001$). The same multiple linear regression analysis was performed with $TV_{43.7 \text{ Gy}}$ ($n = 228$). R^2 was 0.142 ($p < 0.001$), and the presence of TF at the start of RT and $TV_{43.7 \text{ Gy}}$ were shown to be significantly predictive for weight loss up to 5 months. Patients without TF at the start of RT lost more weight than patients with TF ($B = 5.250$, $p = 0.017$), and patients treated with larger $TV_{43.7 \text{ Gy}}$ had a significantly larger weight loss up to 5 months after RT ($B = -0.005$, $p < 0.001$). Clinical stage was not significantly predictive for weight loss in either of the multivariate models ($p = 0.449$ and $p = 0.138$, respectively).

A regression model based on cubic splines was used to illustrate the nonlinear relationship between weight change up to 5 months after RT and $TV_{64.6 \text{ Gy}}$ (Figure 1) and $TV_{43.7 \text{ Gy}}$ (Figure 2) while also controlling for clinical stage and TF at the start of RT ($n = 228$). For $TV_{43.7 \text{ Gy}}$ (Figure 2), the relation between weight and TV displayed an almost linear shape. However, another type of relation was found between weight and $TV_{64.6 \text{ Gy}}$ (Figure 1). Between 500 cm^3 and 1000 cm^3 , the weight seemed to stabilize, and for volumes above 1000 cm^3 the volume effect on weight loss increased more steeply. Above 1500 cm^3 , the 95% CI became wider due to fewer events.

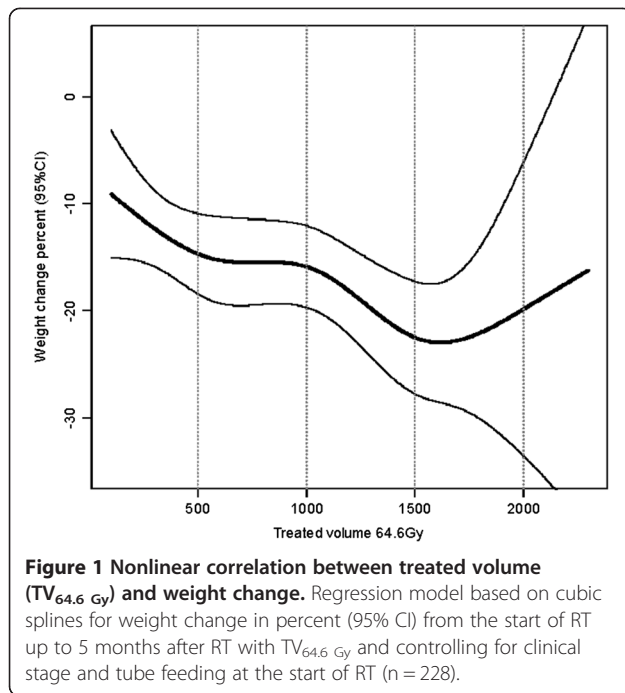
Weight and BMI in relation to 5-year overall survival

Percent weight change from the start of RT up to 5 months after the termination of RT was dichotomized into $<10\%$ ($n = 74$) and $\geq 10\%$ ($n = 158$) and analyzed in relation to 5-year overall survival in study cohort 1 ($n = 232$). The 5-year overall survival rates for

Table 2 Predictive factors for weight loss at 5 months after the termination of radiotherapy (RT) is shown in relation to weight at the start of RT (n = 232)

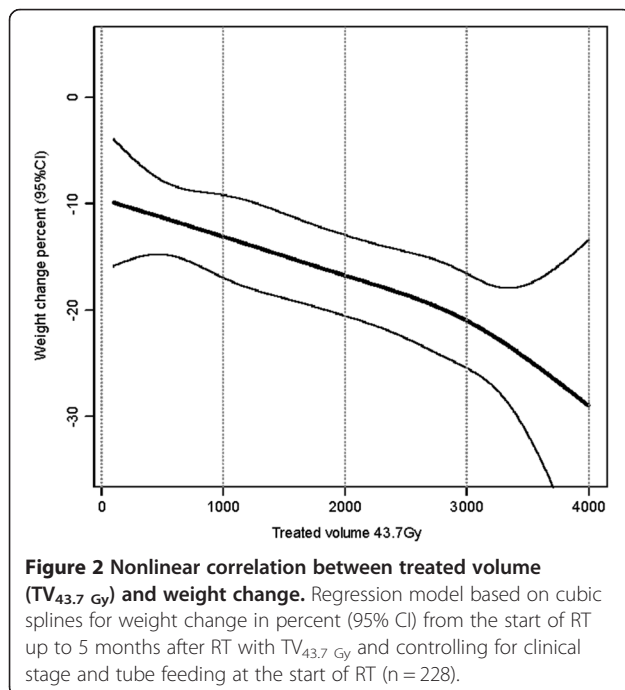
		n (%)	Weight loss % mean \pm SD	p-value*	Missing data																		
Tumor-related factors	Clinical stage	I + II	24 (10.3)	-12.96 \pm 7.36	0.643	-																	
		III + IV	208 (89.7)	-13.74 \pm 7.95																			
Treatment-related factors	Treatment type	CF†	117 (50.4)	-12.96 \pm 7.86	0.170	-																	
		AF‡	115 (49.6)	-14.38 \pm 7.86																			
	Surgery	Yes	101 (43.5)	-13.97 \pm 7.82	0.601	-																	
		No	131 (56.5)	-13.42 \pm 7.94																			
	Tube feeding at the start of RT	Yes	12 (5.2)	-8.70 \pm 8.16	0.024	2																	
		No	218 (94.8)	-13.97 \pm 7.79																			
	Tube feeding at the end of RT	Yes	103 (46.0)	-12.82 \pm 8.56	0.126	8																	
		No	121 (54.0)	-14.45 \pm 7.36																			
Weight loss%																							
<table border="1" style="width: 100%; border-collapse: collapse;"> <thead> <tr> <th></th> <th></th> <th><10%</th> <th>$\geq 10\%$</th> <th></th> <th></th> </tr> </thead> <tbody> <tr> <td>Treated volume (cm^3), mean \pm SD</td> <td>$TV_{64.6 \text{ Gy}}$</td> <td>494.00 \pm 190.43</td> <td>621.00 \pm 285.54</td> <td><0.001</td> <td>2</td> </tr> <tr> <td>Treated volume (cm^3), mean \pm SD</td> <td>$TV_{43.7 \text{ Gy}}$</td> <td>1247.66 \pm 481.94</td> <td>1583.26 \pm 610.24</td> <td><0.001</td> <td>2</td> </tr> </tbody> </table>								<10%	$\geq 10\%$			Treated volume (cm^3), mean \pm SD	$TV_{64.6 \text{ Gy}}$	494.00 \pm 190.43	621.00 \pm 285.54	<0.001	2	Treated volume (cm^3), mean \pm SD	$TV_{43.7 \text{ Gy}}$	1247.66 \pm 481.94	1583.26 \pm 610.24	<0.001	2
		<10%	$\geq 10\%$																				
Treated volume (cm^3), mean \pm SD	$TV_{64.6 \text{ Gy}}$	494.00 \pm 190.43	621.00 \pm 285.54	<0.001	2																		
Treated volume (cm^3), mean \pm SD	$TV_{43.7 \text{ Gy}}$	1247.66 \pm 481.94	1583.26 \pm 610.24	<0.001	2																		

*A p-value less than 0.05 was considered significant as determined by the independent samples t-test. †Conventional fractionation. ‡Accelerated fractionation.



the two weight-change groups were 77.0% and 74.1%, respectively (log rank: $p = 0.708$).

According to the three BMI classifications, 8.4% of the patients were underweight, 33.0% were normal weight, and 58.6% were overweight or obese at the start of RT. Patients with overweight or obesity had a significantly higher percent weight loss up to 5 months (15.3%) compared to

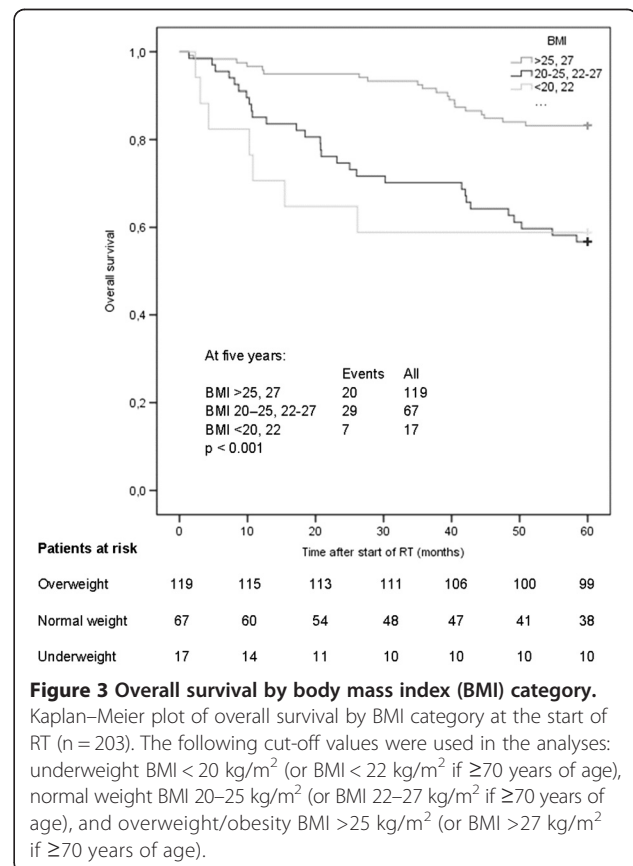


patients with normal weight (11.8%, $p = 0.022$) or underweight (4.9%, $p < 0.001$).

BMI at the start of RT was analyzed in relation to 5-year overall survival in study cohort 2 (n = 203). There was a significant difference in 5-year overall survival between patients with different BMI at the start of RT (log rank: $p < 0.001$) (Figure 3). Patients who were underweight and normal weight at the start of RT had lower survival rates (58.8% and 56.7%, respectively) than patients who were overweight or obese (83.2%). For the unadjusted Cox regression analysis, the HRs and 95% CI were 3.31 (1.40–7.83) ($p = 0.006$) and 3.07 (1.74–5.44) ($p < 0.001$) for patients with underweight or normal weight, respectively. In the adjusted Cox regression, the following variables were included together with BMI: age (numerical value), sex (male/female), clinical stage (I + II or III + IV, used as strata), RT schedule (CF/AF), and surgery (yes/no). The HRs and 95% CI were 3.78 (1.46–9.75) ($p = 0.006$) and 2.57 (1.43–4.62) ($p = 0.002$) in patients with underweight and normal weight, respectively.

Discussion

It is well known that RT for oropharyngeal cancer can lead to nutritional deterioration. The present study has retrospectively explored TV as a predictive factor for



weight loss as well as weight loss and BMI in relation to 5-year overall survival in a cohort consisting of patients with oropharyngeal cancer under nutritional surveillance. A major finding was that TV, as a measure of the radiation dose burden, was of greater predictive value than clinical stage for weight loss from the start of RT up to 5 months after the termination of RT. Another finding was that patients with overweight or obesity had better 5-year overall survival when compared to patients with underweight and normal weight. The same relation could not be shown for weight loss and 5-year overall survival.

A higher degree of treatment toxicity due to a larger radiation dose burden might be a possible explanation as to why patients in the present study who were treated with larger TV had significantly greater weight loss. It is obvious that the larger the TV the higher the risk for exceeding the dose volume constraints in a number of OARs. Despite increasing knowledge on such parameters, there is still a lack of detailed information for several OARs concerning the interrelationship and risks from combined dose-volume responses. For that reason, the TV in a defined set of organs might be useful as a surrogate parameter. This might be of particular use for weight loss, which is highly multi-factorial. Dysphagia is known to be related to the prescribed dose in specific OARs [22-25] and in addition, other side effects of RT such as mucositis and xerostomia [1,6] are known to be related to the irradiated volume. The size of the TV alone might thus predict weight loss, regardless of included OARs, through both locally (increased toxicity response) and systemic effects [47]. It can be speculated that inflammatory mediators produced in response to RT could have a negative influence on the physiological regulation of the appetite thus leading to decreased food intake [2]. Hence, the data from this site-specific cohort support the notion that TV can be used during RT planning to predict which patients are at risk of weight loss and, therefore, are in need of special nutritional surveillance during RT.

The finding that larger TV can predict patients at risk for increased weight loss during and after RT prompted us to further investigate whether there was a specific cut-off for the analyzed TVs that could be used in a clinical setting. For $TV_{64.6 \text{ Gy}}$, the volume effect on weight loss increased for volumes above 1000 cm^3 . However, as the 95% CI became wider above 1500 cm^3 and therefore more difficult to interpret, more studies are needed in order to identify if there exists any specific volume cut-off with clinical relevance.

The results from the current study cannot confirm that weight loss per se is a negative prognostic factor in patients with oropharyngeal cancer. In fact, patients with a high BMI showed the largest weight loss but still had a better 5-year overall survival. This indicates that pretreatment BMI can be used as a prognostic indicator for 5-year

overall survival in patients with oropharyngeal cancer but weight loss in connection to treatment cannot. However, it is difficult to come to any conclusion regarding objective nutritional measures as prognostic indicators for survival in SCCHN because of the diverse nature of the available literature in terms of both results and study design [18,33-42]. Still, the results from the present study for BMI confirm the results of previous research [33,40,41]. The relation between a higher BMI and greater survival might be explained by the larger amount of adipose tissue available to overweight and obese patients. It seems as though the amount of fat mass might determine the amount of lean body mass that can be spared during negative energy balance [48], and this might be of significant clinical value.

Interpretation of the results in this study showing a significant relationship between BMI and survival in patients with oropharyngeal cancer must take confounding factors into consideration. Previous well-known prognostic factors for survival in oropharyngeal cancer are stage, human papilloma virus (HPV) infection, and smoking [49,50]. Prevalence of HPV infection and smoking habits could not be controlled for in the present study because this information was not available for the study cohort. However, when controlling for smoking in a multivariate analysis, McRackan et al. [40] still found a significant impact of BMI on survival. Because the majority of patients with oropharyngeal cancer are currently HPV-positive, it is less probable that HPV is a confounder for BMI. However, the relation between HPV and BMI needs to be better assessed.

One limitation of this study is the number of patients available for analysis. The information on BMI and weight was reduced primarily due to missing data, which implies a potential selection bias of patients available for analysis. In addition, few patients received TF at the start of RT and this should be considered when interpreting the result from the regression analysis. However, one of the strengths of the current study was that all participants had oropharyngeal cancer making the cohort homogenous.

The present study has important clinical implications. TV, defined as the volume of the body encompassed by the 95% isodose of the prescribed dose [31,32], was registered in the ARTSCAN database and was thus chosen in this study as a measure of the radiation dose burden to the patient. The TV might not always be available for the pretreatment decision of a nutritional intervention. With highly conformal RT, the result for the TV might well be transferred to the delineated target, i.e. the planning target volume (PTV). For example, Mallick and co-workers [20] studied PTV instead of TV in relation to weight loss during RT and found a significant impact of larger PTV on weight loss. In this study, the conformity index [32] of $TV_{64.6 \text{ Gy}}/PTV_{68 \text{ Gy}}$ was 1.89 ± 0.59 and the

conformity index of $TV_{43.7\text{ Gy}}/PTV_{46\text{ Gy}}$, was 2.03 ± 0.45 . This suggests that both the PTV and TV can be used as predictors for weight loss and highlights the importance of concise target delineation. Also, based on the results of the present study it seems desirable to strive for a high BMI before initiating RT. In addition, future prospective studies should investigate whether nutritional interventions can improve outcomes in patients with less beneficial nutritional status at the start of RT.

Conclusions

The results of the present study showed that larger $TV_{64.6\text{ Gy}}$ and $TV_{43.7\text{ Gy}}$ were associated with increased weight loss up to 5 months after the termination of RT regardless of clinical stage. Therefore, TV can be used to identify patients at risk of malnutrition and in need of special nutritional surveillance during RT. The results also showed that BMI at the start of RT can be used as a prognostic factor for 5-year overall survival.

Competing interests

The authors declare that they have no competing interests.

Authors' contributions

All authors were involved in the study design (BZ, EK and PN for the initial ARTSCAN trial design); SO and KS were responsible for writing the manuscript; and PN, EK, BZ, and GL were responsible for critical revision of the manuscript. SO performed the statistical analyses. All authors read and approved the final version of the manuscript.

Acknowledgements

This work was supported by grants from the Swedish Cancer Society, Laryngfonden (Sweden), Lions Cancer Research Foundation at Umeå University, and the Cancer Research Foundation of Northern Sweden. The study sponsors had no role in the study design, data collection, data analysis, writing, or the decision to submit the manuscript. This study was made possible by the commitment from the staff at all of the participating centers in the ARTSCAN study: Umeå University Hospital; Lund University Hospital; Karolinska University Hospital at Solna and at Huddinge, Stockholm; Sahlgrenska University Hospital, Göteborg; Örebro University Hospital; Malmö University Hospital; Karlstad Central Hospital; Linköping University Hospital; Gävle Hospital; Ryhov County Hospital, Jönköping; and Uppsala University Hospital. The authors acknowledge Ove Björ for statistical advice.

Author details

¹Department of Clinical Sciences, Otorhinolaryngology, Umeå University, Umeå, Sweden. ²Department of Radiation Sciences, Oncology, Umeå University, Umeå, Sweden. ³Department of Oncology and Radiation Physics, Skåne University Hospital, Lund University, Lund, Sweden. ⁴Department of Surgical Sciences, Otorhinolaryngology and Head & Neck Surgery, Uppsala University, Uppsala, Sweden.

Received: 21 October 2013 Accepted: 12 July 2014

Published: 22 July 2014

References

1. Chasen MR, Bhargava R: A descriptive review of the factors contributing to nutritional compromise in patients with head and neck cancer. *Support Care Cancer* 2009, **17**:1345–1351.
2. Argiles J: Cancer-associated malnutrition. *Eur J Oncol Nurs* 2005, **9**:39–50.
3. Argilés JM, Busquets S, López-Soriano FJ: Cytokines in the pathogenesis of cancer cachexia. *Curr Opin Clin Nutr Metab Care* 2003, **6**:401–406.
4. Argilés JM, Moore-Carrasco R, Busquets S, López-Soriano FJ: Catabolic mediators as targets for cancer cachexia. *Drug Discov Today* 2003, **8**:838–844.
5. List MA, Bilir SP: Functional outcomes in head and neck cancer. *Semin Radiat Oncol* 2004, **14**:178–189.
6. Vissink A, Jansma J, Spijkervet FK, Burlage FR, Coppes RP: Oral sequelae of head and neck radiotherapy. *Crit Rev Oral Biol Med* 2003, **14**:199–212.
7. Argiris A, Karamouzis MV, Raben D, Ferris RL: Head and neck cancer. *The Lancet* 2008, **371**:1695–1709.
8. Kubrak C, Olson K, Jha N, Scrimger R, Parliament M, McCargar L, Koski S, Baracos VE: Clinical determinants of weight loss in patients receiving radiation and chemoirradiation for head and neck cancer: A prospective longitudinal view. *Head Neck* 2012, **35**:695–703.
9. Kubrak C, Olson K, Jha N, Jensen L, McCargar L, Seikaly H, Harris J, Scrimger R, Parliament M, Baracos VE: Nutrition impact symptoms: key determinants of reduced dietary intake, weight loss, and reduced functional capacity of patients with head and neck cancer before treatment. *Head Neck* 2010, **32**:290–300.
10. Larsson M, Hedelin B, Johansson I, Athlin E: Eating problems and weight loss for patients with head and neck cancer: a chart review from diagnosis until one year after treatment. *Cancer Nurs* 2005, **28**:425–435.
11. Schmidt KN, Olson K, Kubrak C, Parliament M, Ghosh S: Validation of the Head and Neck Patient Symptom Checklist as a nutrition impact symptom assessment tool for head and neck cancer patients. *Support Care Cancer* 2013, **21**:27–34.
12. Nourissat A, Bairati I, Fortin A, Gélinas M, Nabid A, Brochet F, Têtu B, Meyer F: Factors associated with weight loss during radiotherapy in patients with stage I or II head and neck cancer. *Support Care Cancer* 2012, **20**:591–599.
13. Kubrak C, Olson K, Baracos VE: The head and neck symptom checklist: an instrument to evaluate nutrition impact symptoms effect on energy intake and weight loss. *Support Care Cancer* 2013, **21**:3127–3136.
14. White JV, Guenter P, Jensen G, Malone A, Schofield M: Consensus statement of the academy of nutrition and dietetics/american society for parenteral and enteral nutrition: characteristics recommended for the identification and documentation of adult malnutrition (undernutrition). *J Acad Nutr Diet* 2012, **112**:730–738.
15. Kondrup J, Allison S, Elia M, Vellas B, Plauth M: ESPEN guidelines for nutrition screening 2002. *Clin Nutr* 2003, **22**:415–421.
16. Beaver ME, Matheny KE, Roberts DB, Myers JN: Predictors of weight loss during radiation therapy. *Otolaryngol Head Neck Surg* 2001, **125**:645–648.
17. Munshi A, Pandey MB, Durga T, Pandey KC, Bahadur S, Mohanti BK: Weight loss during radiotherapy for head and neck malignancies: what factors impact it? *Nutr Cancer* 2003, **47**:136–140.
18. Tiblom Ehrsson YT, Langius-Eklöf A, Laurell G: Nutritional surveillance and weight loss in head and neck cancer patients. *Support Care Cancer* 2011, **20**:757–765.
19. Ottosson S, Zackrisson B, Kjellén E, Nilsson P, Laurell G: Weight loss in patients with head and neck cancer during and after conventional and accelerated radiotherapy. *Acta Oncol* 2013, **52**:711–718.
20. Mallick I, Gupta S, Ray R, Sinha T, Sinha S, Achari R, Chatterjee S: Predictors of Weight Loss during Conformal Radiotherapy for Head and Neck Cancers—How Important are Planning Target Volumes? *Clin Oncol* 2013, **25**:557–563.
21. Jager-Wittenaar H, Dijkstra PU, Vissink A, van der Laan BF, van Oort RP, Roodenburg JL: Critical weight loss in head and neck cancer—prevalence and risk factors at diagnosis: an explorative study. *Support Care Cancer* 2007, **15**:1045–1050.
22. Feng F, Kim H, Lyden T, Haxer M, Feng M, Worden F, Chepeha D, Eisbruch A: Intensity-modulated radiotherapy of head and neck cancer aiming to reduce dysphagia: early dose-effect relationships for the swallowing structures. *Int J Radiat Oncol Biol Phys* 2007, **68**:1289–1298.
23. Langendijk JA, Doornaert P, Rietveld DHF, Verdonck-de Leeuw IM, René Leemans C, Slotman BJ: A predictive model for swallowing dysfunction after curative radiotherapy in head and neck cancer. *Radiother Oncol* 2009, **90**:189–195.
24. Christianen ME, Schilstra C, Beetz I, Muijs CT, Chouvalova O, Burlage FR, Doornaert P, Koken PW, Leemans CR, Rinkel RN: Predictive modelling for swallowing dysfunction after primary (chemo) radiation: results of a prospective observational study. *Radiother Oncol* 2012, **105**:107–114.
25. Mortensen HR, Jensen K, Aksglaede K, Behrens M, Grau C: Late dysphagia after IMRT for head and neck cancer and correlation with dose-volume parameters. *Radiother Oncol* 2013, **107**:288–294.
26. Cartmill B, Cornwell P, Ward E, Davidson W, Nund R, Bettington C, Rahbari RM, Poulsen M, Porceddu S: Emerging understanding of

- dosimetric factors impacting on dysphagia and nutrition following radiotherapy for oropharyngeal cancer. *Head Neck* 2013, **35**:1211–1219.
27. Teguh D, Levendag P, Sewnaik A, Hakkesteegt M, Noever I, Voet P, van der Est H, Sipkema D, van Rooij P, Baatenburg J: **Results of fiberoptic endoscopic evaluation of swallowing vs. radiation dose in the swallowing muscles after radiotherapy of cancer in the oropharynx.** *Radiother Oncol* 2008, **89**:57–63.
 28. Eisbruch A, Kim HM, Feng FY, Lyden TH, Haxer MJ, Feng M, Worden FP, Bradford CR, Prince ME, Moyer JS: **Chemo-IMRT of Oropharyngeal Cancer Aiming to Reduce Dysphagia: Swallowing Organs Late Complication Probabilities and Dosimetric Correlates.** *Int J Radiat Oncol Biol Phys* 2011, **81**:93–99.
 29. Levendag PC, Teguh DN, Voet P, van der Est H, Noever I, de Kruijff WJM, Kolkman-Deurloo IK, Prevost JB, Poll J, Schmitz PIM: **Dysphagia disorders in patients with cancer of the oropharynx are significantly affected by the radiation therapy dose to the superior and middle constrictor muscle: a dose-effect relationship.** *Radiother Oncol* 2007, **85**:64–73.
 30. Zackrisson B, Nilsson P, Kjellén E, Johansson KA, Modig H, Brun E, Nyman J, Friesland S, Reizenstein J, Sjödin H: **Two-year results from a Swedish study on conventional versus accelerated radiotherapy in head and neck squamous cell carcinoma-The ARTSCAN study.** *Radiother Oncol* 2011, **100**:41–48.
 31. ICRU Report 50: *Prescribing, recording and reporting photon beam therapy.* Bethesda, MD: International Commission for Radiation Units and Measurements; 1993.
 32. Supplement to ICRU Report 50: *Prescribing, recording and reporting photon beam therapy.* Bethesda, MD: International Commission for Radiation Units and Measurements; 1999.
 33. Pai PC, Chuang CC, Tseng CK, Tsang NM, Chang KP, Yen TC, Liao CT, Hong JH, Chang JTC: **Impact of Pretreatment Body Mass Index on Patients With Head-and-Neck Cancer Treated With Radiation.** *Int J Radiat Oncol Biol Phys* 2012, **83**:93–100.
 34. Capuano G, Grosso A, Gentile PC, Battista M, Bianciardi F, Di Palma A, Pavese I, Satta F, Tosti M, Palladino A, et al: **Influence of weight loss on outcomes in patients with head and neck cancer undergoing concomitant chemoradiotherapy.** *Head Neck* 2008, **30**:503–508.
 35. Datema FR, Ferrier MB, de Jong RJ B: **Impact of severe malnutrition on short-term mortality and overall survival in head and neck cancer.** *Oral Oncol* 2011, **47**:910–914.
 36. van den Broek GB, Rasch C, Pameijer FA, Peter E, van den Brekel MWM, Tan IB, Schornagel JH, de Bois JA, Zijp LJ, Balm AJM: **Pretreatment probability model for predicting outcome after intraarterial chemoradiation for advanced head and neck carcinoma.** *Cancer* 2004, **101**:1809–1817.
 37. Peduzzi PA, Kowalski LP, Nishimoto IN, Oliveira BV, Tironi F, Ramos GH: **Analysis of prognostic factors in patients with oropharyngeal squamous cell carcinoma treated with radiotherapy alone or in combination with systemic chemotherapy.** *Arch Otolaryngol Head Neck Surg* 2008, **134**:1196–1204.
 38. Argiris A, Li Y, Forastiere A: **Prognostic factors and long term survivorship in patients with recurrent or metastatic carcinoma of the head and neck.** *Cancer* 2004, **101**:2222–2229.
 39. Yueh B, Feinstein AR, Weaver EM, Sasaki CT, Concato J: **Prognostic staging system for recurrent, persistent, and second primary cancers of the oral cavity and oropharynx.** *Arch Otolaryngol Head Neck Surg* 1998, **124**:975–981.
 40. McRackan TR, Watkins JM, Herrin AE, Garrett-Mayer EM, Sharma AK, Day TA, Gillespie MB: **Effect of body mass index on chemoradiation outcomes in head and neck cancer.** *Laryngoscope* 2008, **118**:1180–1185.
 41. Liu SA, Tsai WC, Wong YK, Lin JC, Poon CK, Chao SY, Hsiao YL, Chan MY, Cheng CS, Wang CC, Wang CP: **Nutritional factors and survival of patients with oral cancer.** *Head Neck* 2006, **28**:998–1007.
 42. Van Bokhorst-de Van Der S, van Leeuwen PA, Kuik DJ, Klop WM, Sauerwein HP, Snow GB, Quak JJ: **The impact of nutritional status on the prognoses of patients with advanced head and neck cancer.** *Cancer* 1999, **86**:519–527.
 43. Johansson KA, Nilsson P, Zackrisson B, Ohlson B, Kjellen E, Mercke C, Alvarez-Fonseca M, Billstrom A, Bjork-Eriksson T, Bjor O, et al: **The quality assurance process for the ARTSCAN head and neck study - a practical interactive approach for QA in 3DCRT and IMRT.** *Radiother Oncol* 2008, **87**:290–299.
 44. Stratton RJ, Hackston A, Longmore D, Dixon R, Price S, Stroud M, King C, Elia M: **Malnutrition in hospital outpatients and inpatients: prevalence, concurrent validity and ease of use of the 'malnutrition universal screening tool'('MUST') for adults.** *Br J Nutr* 2004, **92**:799–808.
 45. Vallén C, Hagell P, Westergren A: **Validity and user-friendliness of the minimal eating observation and nutrition form-version II (MEONF-II) for undernutrition risk screening.** *Food & Nutrition Res* 2011, **55**. doi:10.3402/fnr.v55i0.5801.
 46. Wood SN: **Introducing GAMs.** In *Generalized Additive Models. An Introduction with R.* 1st edition. Edited by Wood SN. New York: Chapman & Hall/CRC; 2006:121–140.
 47. Formenti SC, Demaria S: **Systemic effects of local radiotherapy.** *Lancet Oncol* 2009, **10**:718–726.
 48. Soeters PB, Reijnen PL, Van Bokhorst-de Van Der Schueren MA, Schols JM, Halfens RJ, Meijers JM, van Gemert WG: **A rational approach to nutritional assessment.** *Clin Nutr* 2008, **27**:706–716.
 49. Licitra L, Bernier J, Grandi C, Merlano M, Bruzzi P, Lefebvre J-L: **Cancer of the oropharynx.** *Crit Rev Oncol Hematol* 2002, **41**:107–122.
 50. Cmelak AJ: **Current issues in combined modality therapy in locally advanced head and neck cancer.** *Crit Rev Oncol Hematol* 2012, **82**:261–273.

doi:10.1186/1748-717X-9-160

Cite this article as: Ottosson et al.: Weight and body mass index in relation to irradiated volume and to overall survival in patients with oropharyngeal cancer: a retrospective cohort study. *Radiation Oncology* 2014 **9**:160.

Submit your next manuscript to BioMed Central and take full advantage of:

- Convenient online submission
- Thorough peer review
- No space constraints or color figure charges
- Immediate publication on acceptance
- Inclusion in PubMed, CAS, Scopus and Google Scholar
- Research which is freely available for redistribution

Submit your manuscript at
www.biomedcentral.com/submit

