



# LUND UNIVERSITY

## On Event-Based Sampling for LQG-Optimal Control

Thelander Andrén, Marcus; Bernhardsson, Bo; Cervin, Anton; Soltesz, Kristian

*Published in:*  
56th IEEE Conference on Decision and Control, CDC, 2017

*DOI:*  
[10.1109/CDC.2017.8264464](https://doi.org/10.1109/CDC.2017.8264464)

2018

*Document Version:*  
Peer reviewed version (aka post-print)

[Link to publication](#)

*Citation for published version (APA):*  
Thelander Andrén, M., Bernhardsson, B., Cervin, A., & Soltesz, K. (2018). On Event-Based Sampling for LQG-Optimal Control. In *56th IEEE Conference on Decision and Control, CDC, 2017* (pp. 5438-5444)  
<https://doi.org/10.1109/CDC.2017.8264464>

*Total number of authors:*  
4

### General rights

Unless other specific re-use rights are stated the following general rights apply:  
Copyright and moral rights for the publications made accessible in the public portal are retained by the authors and/or other copyright owners and it is a condition of accessing publications that users recognise and abide by the legal requirements associated with these rights.

- Users may download and print one copy of any publication from the public portal for the purpose of private study or research.
- You may not further distribute the material or use it for any profit-making activity or commercial gain
- You may freely distribute the URL identifying the publication in the public portal

Read more about Creative commons licenses: <https://creativecommons.org/licenses/>

### Take down policy

If you believe that this document breaches copyright please contact us providing details, and we will remove access to the work immediately and investigate your claim.

LUND UNIVERSITY

PO Box 117  
221 00 Lund  
+46 46-222 00 00

# On Event-Based Sampling for LQG-Optimal Control

Marcus Thelander Andrén, Bo Bernhardsson, Anton Cervin and Kristian Soltész

**Abstract**— We consider the problem of finding an event-based sampling scheme that optimizes the trade-off between average sampling rate and control performance in a linear-quadratic-Gaussian (LQG) control problem setting with output feedback. Our analysis is based on a recently presented sampled-data controller structure, which remains LQG-optimal for any choice of sampling scheme. We show that optimization of the sampling scheme is related to an elliptic convection–diffusion type partial differential equation over a domain with free boundary, a so called Stefan problem. A numerical method is presented to solve this problem for second order systems, and thus obtain an optimal sampling scheme. The method also directly generalizes to higher order systems, although with a higher computational cost. For the special case of multidimensional integrator systems, we present the optimal sampling scheme on closed form, and prove that it will always outperform its periodic counterpart. Tight bounds on the improvement are presented. The improved performance is also demonstrated in numerical examples, both for an integrator system and a more general case.

**Index Terms**— Event-based sampling, LQG-optimal control, sampled-data control, linear reset systems

## I. INTRODUCTION

Sampled-data control has a long history of using zero-order hold (ZOH) actuation and periodic sampling, with a well-established theoretical framework [1]. However, system resources such as network bandwidth, energy and computational power associate sampling and actuation with a cost. The question then arises how to make more resource-efficient control implementations. This is where the field of event-based control has emerged, where sampling and actuation are triggered only when controlled variables deviate significantly from their setpoints. Early pioneering work in [2] and [3] demonstrated the potential of event-based control, and it has since been a field of much activity [4]–[7].

In event-based control, both the intersample behavior of the control signal and the sampling scheme are considered parts of the design problem. For a closed-loop system of the form in Fig. 1, this corresponds to co-design of the sampler  $\mathcal{S}$ , the hold circuit  $\mathcal{H}$ , the discrete-time controller  $\bar{K}$  and the sequence of sampling times  $\{t_i\}_{i \in \mathbb{N}_0}$ . Optimal co-design of these components is considered a difficult task, even for the well-studied linear-quadratic-Gaussian (LQG) control problem. Many previous works have therefore focused on sub-optimal solutions, several of which are shown to outperform their periodic counterparts [8]–[11]. However, these

This work has been supported by the Swedish Research Council. The authors are with the Department of Automatic Control, Lund University, Sweden, and are members of the LCCC Linnaeus Center and the EL-LIIT Excellence Center at Lund University. e-mail: {marcus, bob, anton, kristian}@control.lth.se

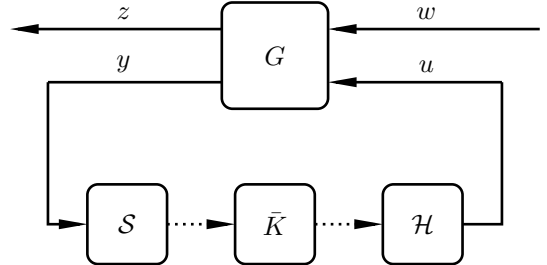


Fig. 1. An LTI system  $G$  in feedback with a sampled-data controller consisting of a sampler  $\mathcal{S}$ , a hold circuit  $\mathcal{H}$  and a discrete-time controller  $\bar{K}$ . Solid lines represent continuous-time signals, whereas dashed lines represent discrete-time signals.

works do not consider optimization of the full co-design and typically assume setups with periodically synchronized sampling decisions and full state information. To the authors’ knowledge, there has still not been presented an optimal event-based co-design of controller and sampling scheme for the continuous-time LQG-problem with output feedback.

Recently, however, a  $\mathcal{H}_2$ -optimal controller structure was presented in [12], which was shown to be optimal for any given, uniformly bounded, sequence of sampling times. This remarkable result was applied to event-based control in [13] and [14], where in the latter it was proven that the structure is still LQG-optimal when the sampling times depend on the controlled variables. This implies that the co-design problem is separable, and that it remains to find the sampling scheme that optimizes the performance for a given cost on sampling effort, e.g., the average sampling rate. In the considered setup in Fig. 1, the sampling effort represents costly data transmissions from the sensor to actuator side.

The results in [12] also show that the closed-loop performance is fundamentally determined by a linear reset system. Reset systems in event-based control have been considered in several works, e.g. [2], [15], [16], and the results in [12] confirm that they play an important role. In [16, Paper I & II], a general framework for optimal event-based impulse control is developed, and we show that this framework is key in solving the optimal sampling problem.

Our contribution is to derive the optimal event-based sampling scheme for the controller structure in [12] using the framework in [16]. We show that the optimal sampling problem is equivalent to solving a stationary, elliptic, partial-differential equation (PDE) with free boundary, for which numerical solution methods can be applied. For general second-order systems, we present a finite-difference method for obtaining the optimal sampling scheme numerically. The proposed method also directly generalizes to higher-order

systems, although at a higher computational cost. For the special case of  $n$ -dimensional integrator systems, we present a closed-form solution to the optimal sampling problem. The performance ratio between periodic and optimal event-based sampling is then shown to lie in the interval  $[1 + \frac{2}{n}, 3)$ .

## II. PROBLEM FORMULATION

We consider the problem of finding the optimal sampling scheme for the closed-loop system in Fig. 1. Here,  $G$  is a linear time-invariant (LTI) continuous-time system, with an  $n$ -dimensional realization of the form

$$G : \begin{cases} \dot{x}(t) = Ax(t) + B_w w(t) + B_u u(t), \\ z(t) = C_z x(t) + D_{zu} u(t), \\ y(t) = C_y x(t) + D_{yw} w(t). \end{cases} \quad (1)$$

The system  $G$  is assumed to satisfy the standard assumptions for the output feedback  $\mathcal{H}_2$  problem in [17, Sec. 14.5] (but here we do not assume  $D_{zu}$  and  $D_{yw}$  to be normalized). The inputs to  $G$  are the control signal  $u$  and unit-intensity white noise  $w$ . The outputs are the measurement  $y$  and the controlled signal  $z$ .

We define the following infinite-horizon LQG cost as the measure of control performance:

$$J_z := \limsup_{T \rightarrow \infty} \frac{1}{T} \mathbb{E} \left[ \int_0^T z(t)^\top z(t) dt \right]. \quad (2)$$

In the case of a linear closed-loop system, (2) can be viewed as the squared  $\mathcal{H}_2$  norm. The average sampling rate of the system is defined as

$$f := \limsup_{T \rightarrow \infty} \frac{1}{T} \mathbb{E} \left[ \sum_{i=0}^{\infty} 1_{t_i \leq T} \right], \quad (3)$$

where the sum counts the number of sampling times up to time  $T$ . The objective is to solve the optimization problem

$$\min_{\{t_i\}} (J_z + \rho f), \quad (4)$$

where  $\rho \geq 0$  is the per-sample cost, which governs the trade-off between sampling rate and performance. The optimization (4) is performed over the sequence of sampling times,  $\{t_i\}_{i \in \mathbb{N}_0}$ , based on knowledge of  $y(t)$  for  $t \leq t_i$  alone.

The sampled-data controller structure  $K = \mathcal{H}\bar{K}\mathcal{S}$  will be fixed to the optimal structure from [12], which minimizes (2) for any sequence  $\{t_i\}$ . It will be reviewed next.

### A. The Optimal Controller Structure

With no cost of sampling (i.e.  $\rho = 0$ ), the controller that minimizes  $J_z$  is the continuous-time LQG controller [17, Ch. 14], with the realization

$$\begin{cases} \dot{\hat{x}}(t) = (A + B_u F + L C_y) \hat{x}(t) - L y(t), \\ u(t) = F \hat{x}(t), \end{cases} \quad (5)$$

where  $F$  and  $L$  are computed by solving the two algebraic Riccati equations

$$\begin{cases} A^\top X + X A + C_z^\top C_z - F^\top (D_{zu}^\top D_{zu}) F = 0, \\ F = -(D_{zu}^\top D_{zu})^{-1} (B_u^\top X + D_{zu}^\top C_z), \\ AY + Y A^\top + B_w B_w^\top - L (D_{yw} D_{yw}^\top) L^\top = 0, \\ L = -(Y C_y^\top + B_w D_{yw}^\top) (D_{yw} D_{yw}^\top)^{-1}. \end{cases}$$

The minimum cost,  $\gamma_0 := \min J_z$ , is then [17, Thm. 14.7]

$$\gamma_0 = \text{Tr}(B_w^\top X B_w) + \text{Tr}(C_z Y C_z^\top) + \text{Tr}(X A Y + Y A^\top X). \quad (6)$$

Since sampling will always lead to some performance degradation,  $\gamma_0$  is the lower bound on  $J_z$  for any sampled-data controller structure  $K$ . The optimal structure is given by the following theorem:

*Theorem 1* ([12, Thm. 5.1] & [14, Thm. 1]): The optimal achievable performance for the system in Fig. 1 among all causal sampled-data controllers  $K$  for any uniformly bounded sampling sequence  $\{t_i\}$ , possibly dependent on controlled variables, is

$$\min_K J_z = \gamma_0 + \limsup_{T \rightarrow \infty} \frac{1}{T} \mathbb{E} \left[ \int_0^T \eta(t)^\top \eta(t) dt \right], \quad (7)$$

where  $\eta$  is the output of a linear reset system  $H$

$$H : \begin{cases} \dot{x}_H(t) = A x_H(t) + \epsilon(t), & x_H(t_i) = 0, \\ \eta(t) = (D_{zu}^\top D_{zu})^{\frac{1}{2}} F x_H(t). \end{cases} \quad (8)$$

The input  $\epsilon = L(y - C_y x_s)$  is the measurement update of the Kalman–Bucy filter

$$\dot{x}_s(t) = A x_s(t) + B_u u(t) - L(y(t) - C_y x_s(t)), \quad (9)$$

operating on the sensor-side measurement  $y$ . Furthermore,  $x_H = x_a - x_s$ , where  $x_a$  is the state vector of an intermittently reset LQR controller simulating the closed loop on the actuator side,

$$\begin{cases} \dot{x}_a(t) = (A + B_u F) x_a(t), & x_a(t_i) = x_s(t_i), \\ u(t) = F x_a(t). \end{cases} \quad (10)$$

*Proof:* See proof of Theorem 5.1 in [12] for the original derivation, and proof of Theorem 3.1 in [14] for the extension to stochastic disturbances and sampling sequences that are allowed to depend on controlled variables. The scaling factor  $(D_{zu}^\top D_{zu})^{\frac{1}{2}}$  in (8) is featured here since we do not assume the normalization  $D_{zu}^\top D_{zu} = I$  as in [12]. ■

*Remark 1:* The optimal controller structure also has a representation given explicitly in  $\mathcal{S}$ ,  $\bar{K}$  and  $\mathcal{H}$ , derived in [12, Corollary 4.3]. It would be considered for practical implementations, but is less intuitive for analysis.

A block diagram of the optimal controller structure (9)–(10) is presented in Fig. 2. Naturally, a copy of (10) should be featured at the sensor side to compute the control signal  $u$  for the Kalman–Bucy filter.

The system  $H$  from Theorem 1 describes the inter-sample degradation compared to the performance of the continuous-time LQG controller. It is driven by the signal  $\epsilon$ , which will be a white process with intensity  $L D_{yw} D_{yw}^\top L^\top$ .

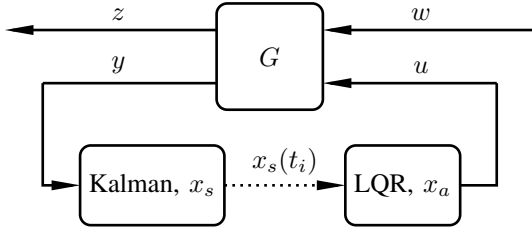


Fig. 2. The optimal sampled-data controller structure. It features a Kalman–Bucy filter on the sensor side that intermittently transmits its estimate to an LQR controller simulating the closed-loop system on the actuator side.

### B. The Optimal Sampling Problem

Using (7) in Theorem 1, we can rewrite the original problem (4) as

$$\min_{\{t_i\}} (J_z + \rho f) = \gamma_0 + \min_{\{t_i\}} (J_H + \rho f),$$

$$J_H := \limsup_{T \rightarrow \infty} \frac{1}{T} \mathbb{E} \left[ \int_0^T \eta(t)^\top \eta(t) dt \right],$$

i.e., it is sufficient to consider optimization over the linear reset system in (8). Therefore we construct a sampling scheme based on the signal  $x_H$ ,  $\phi(x_H) : \mathbb{R}^n \rightarrow \{0, 1\}$ , where 1 denotes “sample” and 0 denotes “no sample”, i.e.,  $\{t_i\} = \{t | \phi(x_H(t)) = 1\}$ . The problem of finding the optimal sampling scheme is thus

$$\min_{\phi} (J_H + \rho f). \quad (11)$$

### III. A FRAMEWORK FOR THE OPTIMAL SAMPLING PROBLEM

A problem similar to (11) was considered in [16, Paper I and II], and we will build upon the framework presented there. It considers optimal event-based impulse control of LTI systems, driven by a white process with intensity  $R$ , where the system state  $x$  is reset to zero at each actuation. The cost considered in [16] has the form

$$\limsup_{T \rightarrow \infty} \frac{1}{T} \mathbb{E} \left[ \int_0^T x^\top(t) Q x(t) dt \right] + \rho f,$$

with  $f$  and  $\rho$  defined as in (3), (4). The state cost matrix  $Q$  is considered a design variable. Note that if we consider the choice  $Q = F^\top D_{zu}^\top D_{zu} F$ , this cost is equivalent to the one in (11). Furthermore, with  $R = L D_{yw} D_{yw}^\top L^\top$  the system configuration is identical to (8). The framework of [16, Paper I and II] is thus directly applicable to (11).

#### A. The Equivalent Value Function Problem

The framework in [16, Paper I and II] is based on introducing and optimizing bounds on the cost,  $\underline{J} \leq J_H + \rho f \leq \bar{J}$ . The bounds are determined by finding a bounded,  $\mathcal{C}^2$ , value function  $V : x_H \rightarrow \mathbb{R}$ , satisfying the path constraints

$$\begin{cases} \frac{1}{T} (j + \mathbb{E}[V(x_H(T)) - V(x_H(0))]) \geq \underline{J}, \\ \frac{1}{T} (j + \mathbb{E}[V(x_H(T)) - V(x_H(0))]) \leq \bar{J}, \end{cases}$$

$$j := \mathbb{E} \left[ \int_0^T x_H^\top(t) Q x_H(t) dt \right] + \rho \mathbb{E} \left[ \sum_{i=0}^{\infty} \mathbf{1}_{t_i \leq T} \right].$$

If such a function  $V$  is found for a given sampling scheme, then the limit  $T \rightarrow \infty$  gives the desired bounds on  $J_H + \rho f$ . The objective now is twofold; to minimize  $\bar{J}$  with respect to the sampling scheme and to find a value function  $V$  such that the bounds are tight, i.e.,  $\underline{J} = \bar{J}$ . Achieving both means that we have solved (11). The following theorem specifies when this is the case.

*Theorem 2* ([16, Paper II, Thm. 1]): Consider the optimal sampling problem in (11). Suppose a bounded,  $\mathcal{C}^2$ , function  $V$  and a constant  $J$  satisfy

$$x_H^\top Q x_H + x_H^\top A^\top \nabla V + \frac{1}{2} \text{Tr}(R \nabla^2 V) \geq J, \quad \forall x_H \in \mathbb{R}^n, \quad (12)$$

$$\rho \geq V(x_H) - V(0), \quad \forall x_H \in \mathbb{R}^n, \quad (13)$$

where equality is achieved in at least one of (12) and (13) for each  $x_H$ . Then the optimal cost in (11) is  $J$ , and

$$\frac{1}{T} (j + \mathbb{E}[V(x_H(T)) - V(x_H(0))]) \geq J. \quad (14)$$

Equality is achieved in (14) when sampling is triggered on equality in (13), i.e., an optimal sampling scheme is

$$\phi(x_H) = \begin{cases} 1, & V(x_H) - V(0) = \rho, \\ 0, & \text{otherwise.} \end{cases}$$

*Proof:* See proof of Theorem 1 in [16, Paper II]. ■

The inequalities (12), (13) can also be formulated as a stationary convection–diffusion type PDE over a domain with a free boundary, a so called Stefan problem [18]. Such problems are usually found in models describing mediums undergoing phase change, e.g., melting ice.

Let  $\Omega$  denote the set where equality is attained in (12). On the boundary,  $\partial\Omega$ , we have equality in (13), meaning that  $\partial\Omega$  is a level set of  $V$ . Since  $V$  is  $\mathcal{C}^2$  and constant outside  $\Omega$  (equality in (13)), it holds that  $\nabla V = 0$  on  $\partial\Omega$ . We can thus write (12), (13) as

$$\begin{cases} x_H^\top Q x_H - J + x_H^\top A^\top \nabla V + \frac{1}{2} \text{Tr}(R \nabla^2 V) = 0, \\ V(x_H) \leq \rho + V(0), \end{cases} \quad \forall x_H \in \mathbb{R}^n, \quad (15)$$

$$\begin{cases} V(x_H) = \rho + V(0), \\ \nabla V = 0, \end{cases} \quad \forall x_H \in \partial\Omega. \quad (16)$$

For fixed values of  $J$ ,  $\rho$ , and  $V(0)$ , this is a Stefan problem in  $V$  with the free boundary  $\partial\Omega$ . The first two terms in (15) describe production, the third convection and the fourth diffusion. On the free boundary  $\partial\Omega$  we have both a Dirichlet and a Neumann condition, given by (16). While PDEs of this kind generally do not have a closed-form solution, there exist several numerical solution methods (see e.g., [19], [20]).

#### B. A Closed-Form Solution for the Integrator Case

In the special case of an  $n$ -dimensional integrator system, there is in fact a closed-form solution to (12), (13).

*Theorem 3* ([16, Paper II, Thm. 2]): For  $A = 0$ , the value function  $V$  satisfying (12) and (13) is given by

$$V(x_H) = \begin{cases} -\frac{1}{4} g(x_H)^2, & g(x_H) \geq 0, \\ 0, & \text{otherwise,} \end{cases}$$

$$g(x_H) = 2\sqrt{\rho} - x_H^\top P x_H,$$

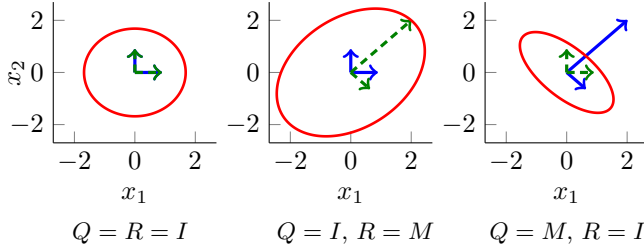


Fig. 3. Examples of the optimal, ellipsoidal, trigger bounds (red, solid) in the integrator case. The state cost matrix  $Q$  (blue, solid) and noise intensity matrix  $R$  (green, dashed) are represented by their respective eigenvectors scaled according to associated eigenvalues. For all cases  $\rho = 1$  and  $M = N_{\pi/4}^T \text{diag}(1, 10) N_{\pi/4}$ , where  $N_{\theta}$  is the rotation matrix defined in (24).

which corresponds to the optimal sampling scheme

$$\phi(x_{\text{H}}) = \begin{cases} 1, & 2\sqrt{\rho} - x_{\text{H}}^T P x_{\text{H}} = 0, \\ 0, & \text{otherwise.} \end{cases}$$

For  $R \succ 0$ ,  $Q \succ 0$ , the matrix  $P \succ 0$  is the unique solution of the Riccati-like equation

$$PRP + \frac{1}{2} \text{Tr}(RP)P = Q. \quad (17)$$

The optimal cost is  $J = \sqrt{\rho} \text{Tr}(RP)$ , where specifically

$$J_{\text{H}} = \rho f = \frac{1}{2} \sqrt{\rho} \text{Tr}(RP). \quad (18)$$

*Proof:* All statements but (18) and the uniqueness of  $P$  are proven by insertion into (12) and (13) in Theorem 2. For a detailed proof, see [16, Paper II]. ■

*Remark 2:* Positive definiteness of  $Q$  and  $R$  in (17) is assured by the standard assumptions on (1), since  $A = 0$  implies  $R = LD_{yw}D_{yw}^T L^T = B_w B_w^T \succ 0$  and  $Q = F^T D_{zu}^T D_{zu} F = C_z^T C_z \succ 0$ .

The shapes of the ellipsoidal trigger bounds, illustrated in Fig. 3, reflect the optimal trade-off between sampling rate and performance. Directions associated with large eigenvalues of the noise intensity matrix  $R$  will typically have a bound moved further away from the origin, sacrificing some performance to ensure fewer sampling events. The opposite is true for directions associated with large eigenvalues of the state cost matrix  $Q$ .

Since the Riccati-like equation (17) is nonlinear in  $P$ , it cannot be solved using semi-definite programming. However, the following result reduces the problem to a scalar search.

*Theorem 4:* Consider equation (17). Define the matrix  $\tilde{R} := Q^{\frac{1}{2}} R Q^{\frac{1}{2}} \succ 0$ , and introduce the decomposition

$$\tilde{R} = U \bar{R} U^T, \quad U U^T = I, \quad \bar{R} = \text{diag}\{r_i\}.$$

The solution to (17) is then given by

$$P = Q^{\frac{1}{2}} U \bar{P} U^T Q^{\frac{1}{2}}, \quad \bar{P} = \text{diag}\{p_i\},$$

where

$$p_i = -\frac{s}{4r_i} + \sqrt{\frac{s^2}{16r_i^2} + \frac{1}{r_i}}, \quad i \in \{1, \dots, n\},$$

and  $s > 0$  is the unique root of the scalar function

$$h(s) := (n+4)s - \sum_{j=1}^n \sqrt{s^2 + 16r_j}.$$

*Proof:* The proof is presented in the appendix. ■

For the integrator case, we can use Theorem 3 to compute the cost as a function of the average sampling period  $h_{\text{avg}} := 1/f$

$$J_{\text{H}} = J_e h_{\text{avg}}, \quad J_e = \frac{[\text{Tr}(RP)]^2}{4}. \quad (19)$$

With this result, it is interesting to compare how much optimal event-based sampling improves the performance over periodic sampling. The cost using periodic sampling is given by [13, Remark 4]

$$J_{\text{H}} = \frac{1}{h} \int_0^h \int_0^{h-\tau} \|D_{zu} F e^{A\sigma} L D_{yw}\|_F^2 d\sigma d\tau,$$

where  $h = h_{\text{avg}}$  is the sampling period. With  $A = 0$  we can rewrite this as

$$J_{\text{H}} = J_p h_{\text{avg}}, \quad J_p = \frac{\text{Tr}(RQ)}{2}, \quad (20)$$

by noting that  $\|D_{zu} F L D_{yw}\|_F^2 = \text{Tr}(RQ)$ . Based on (19) and (20), we can prove that optimal event-based sampling will always outperform its periodic counterpart for the integrator case.

*Theorem 5:* Using the optimal sampled-data controller structure (9), (10), the performance ratio,  $J_{\text{ratio}} := J_p/J_e$ , between periodic and optimal event-based sampling for the  $n$ -dimensional integrator system is bounded by

$$1 + \frac{2}{n} \leq J_{\text{ratio}} < 3, \quad n \geq 2, \quad (21)$$

and  $J_{\text{ratio}} = 3$  for the special case  $n = 1$ . Furthermore, the bounds in (21) are tight, with equality in the lower bound when the eigenvalues of the matrix  $RQ$  are identical. The ratio  $J_{\text{ratio}}$  approaches the upper bound when all but one eigenvalue of  $RQ$  approach zero.

*Proof:* The proof is presented in the appendix. ■

### C. A Numerical Method for the General Case

A closed-form solution for the general case,  $A \neq 0$ , remains to be found, if it even exists. However, we have been able to obtain  $V$  numerically for the second-order case. The numerical solution gives some further intuition into the optimal event-based control strategy.

Consider the the Stefan problem of the form (22)–(23). Assume that we wish to solve the non-stationary version of the problem, for some fixed  $J$  and with  $V(0, t) := -\rho$ ,  $\forall t$  (the choice of  $V(0, t)$  is not essential, as it only acts as a reference point). The problem then has the form

$$\begin{cases} x_{\text{H}}^T Q x_{\text{H}} - J + x_{\text{H}}^T A^T \nabla V + \frac{1}{2} \text{Tr}(R \nabla^2 V) = \frac{\partial V}{\partial t}, \\ V(x_{\text{H}}, t) \leq 0, \end{cases} \quad \forall x_{\text{H}} \in \mathbb{R}^n, \forall t, \quad (22)$$

$$\begin{cases} V(x_{\text{H}}, t) = 0, \\ \nabla V = 0, \end{cases} \quad \forall x_{\text{H}} \in \partial\Omega, \forall t. \quad (23)$$

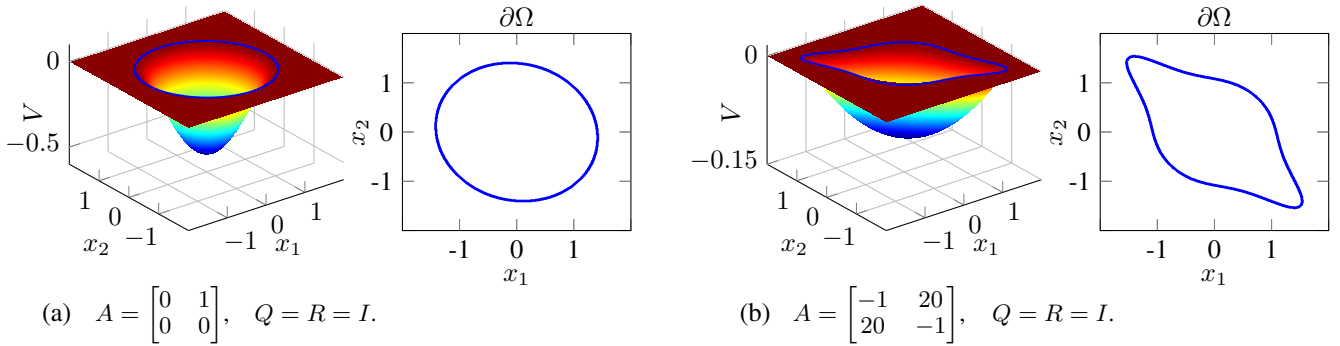


Fig. 4. Numerically obtained value function  $V$  (surface plot) and corresponding trigger bound  $\partial\Omega$  (blue, solid) for (a) a double integrator system and (b) a system with strong cross-coupling of the states. Note that the trigger bound is convex in (a) but non-convex in (b).

A natural idea is to use standard numerical tools for PDE solving to simulate (22) in discrete time, while at each time step enforcing the inequality on  $V$ . To approximate the differential operators in (22), we use the backward-time central-space (BTCS) finite-difference method [21] and enforce the inequality by assigning  $V := \min(V, 0)$  at each time step. This assignment has the effect of moving the free boundary  $\partial\Omega$  over time. The simulation is then progressed until a stopping criterion based on stationarity of  $V$  is met. If stationarity is reached, this means that we have found a solution satisfying (15), (16) for the specific  $J$ , and thus the optimal trigger bound is given by the resulting boundary  $\partial\Omega$ . For further detail, we refer to the supplemental Matlab code<sup>1</sup>.

The method has been validated using the known results for the case  $A = 0$  and is successfully reaching a stationary solution for all second-order systems considered so far. While it could in principle be applied to higher-order cases as well, this becomes unwieldy due to the time complexity, which grows exponentially in  $n$ . For second-order systems, preliminary findings suggest that the trigger bound is convex and almost ellipsoidal whenever the system states are relatively weakly coupled. An example of this situation is seen in Fig. 4a, which shows the resulting  $V$  and trigger bound for a double (chain) integrator. However, the optimal trigger bound is not convex in general, as seen in Fig. 4b, where  $V$  and the optimal trigger bound are presented for a system with a strong cross-coupling between the two states.

#### IV. NUMERICAL EXAMPLES

Here we demonstrate the described optimal co-design of controller structure and event-based sampling through two numerical second-order examples—one integrator and one unstable system. We compare the trade-off between performance  $J_z$  and average sampling period  $h_{\text{avg}}$  for three different controller structures and sampling methods:

- (a) Standard zero-order hold LQG using periodic sampling.
- (b) The optimal controller structure, (9), (10), using periodic sampling.
- (c) The optimal controller structure, (9), (10), using optimal event-based sampling.

<sup>1</sup>Available at <https://gitlab.control.lth.se/marcus/optimal-trigger-bound.git>

#### A. Integrator Example

For the integrator example,  $A = 0$ , we consider a second-order system with the following parameters:

$$B_w = \begin{bmatrix} (R_d^{\frac{1}{2}} N_{\pi/8})^\top & 0 \end{bmatrix}, \quad B_u = C_y = I, \\ C_z = \begin{bmatrix} (Q_d^{\frac{1}{2}} N_{\pi/4})^\top & 0 \end{bmatrix}^\top, \quad D_{yw} = D_{zu}^\top = \begin{bmatrix} 0 & I \end{bmatrix},$$

where

$$R_d = Q_d = \begin{bmatrix} 1 & 0 \\ 0 & 5 \end{bmatrix}, \quad N_\theta = \begin{bmatrix} \cos(\theta) & -\sin(\theta) \\ \sin(\theta) & \cos(\theta) \end{bmatrix}. \quad (24)$$

This choice of  $C_z$  and  $B_w$  corresponds to

$$Q = N_{\pi/4}^\top Q_d N_{\pi/4}, \quad R = N_{\pi/8}^\top R_d N_{\pi/8},$$

i.e., the corresponding linear reset system  $H$  will have asymmetric cost and noise intensity matrices whose eigenvectors are not aligned to each other nor the state axes. This ensures that the integrator states are coupled through the input noise and controlled output, as to avoid the degenerated case of two uncoupled first-order integrator processes.

Trade-off curves for (b) and (c) are obtained through (19) and (20) respectively. For (a) we use the Matlab toolbox Jitterbug [22].

The resulting trade-off curves are presented in Fig. 5. Note that the improvement made by going from the sub-optimal structure (a) to the optimal structure (b) is smaller than the improvement by going from periodic sampling (b) to optimal event-based sampling (c). This suggests that sampling scheme, rather than controller structure, is the main performance contributor in this example.

#### B. Unstable Example

For the unstable example we use the following parameters:

$$A = \begin{bmatrix} 0 & 5 \\ 5 & 0 \end{bmatrix}, \quad B_w = C_z^\top = \begin{bmatrix} 2.84 & 0 & 0 & 0 \\ -2.77 & 0.65 & 0 & 0 \end{bmatrix}, \\ B_u = C_y^\top = \begin{bmatrix} 9 & 0 \\ 8.95 & 0.95 \end{bmatrix}, \quad D_{zu} = D_{yw}^\top = \begin{bmatrix} 0 \\ I \end{bmatrix},$$

which correspond to  $Q = R = I$ . For (c), we numerically obtain optimal trigger bounds for different values of  $J$  using the method outlined in Sec. III-C. The resulting trigger bounds are presented in Fig. 6. Trade-off curves for (c) are obtained by simulating a sampled version of the system, with

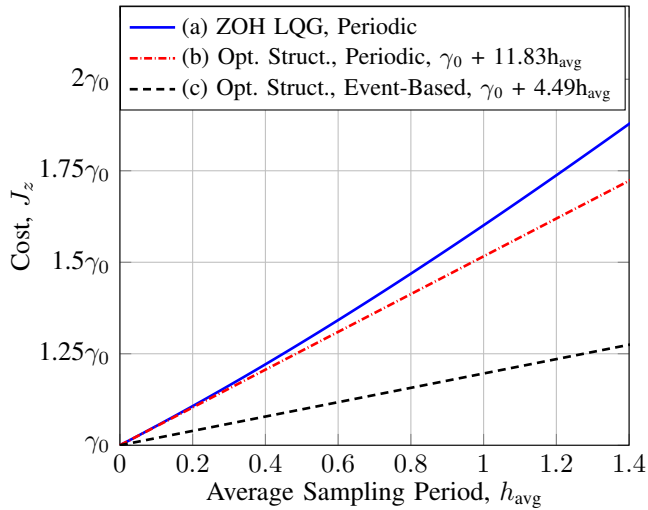


Fig. 5. Trade-off curves for the integrator example, with  $\gamma_0 = 22.91$ . Note that  $J_{\text{ratio}} = 11.83/4.49 \approx 2.63$ , falling inside the bounds  $2 \leq J_{\text{ratio}} < 3$  from Theorem 5. The result suggests that sampling scheme, rather than controller structure, is the main performance contributor.

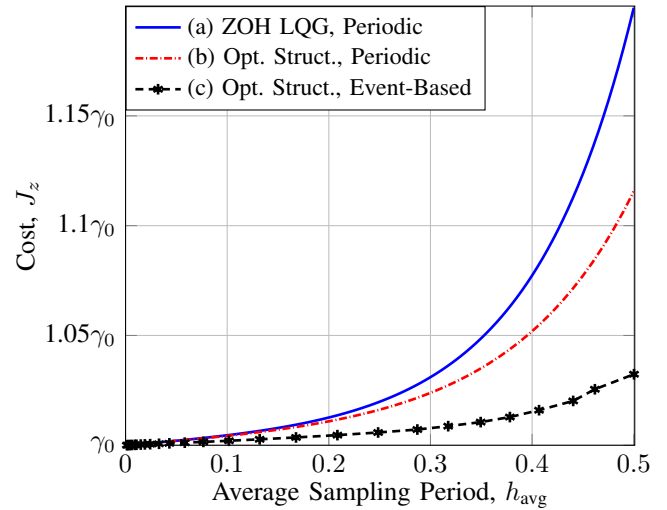


Fig. 7. Trade-off curves for the unstable example, with  $\gamma_0 = 25.34$ . With  $\gamma_0$  as zero-reference, the performance ratio between periodic and event-based sampling for the optimal controller structure grows from  $J_{\text{ratio}} = 1$  at  $h_{\text{avg}} = 0$  to  $J_{\text{ratio}} \approx 3.6$  at  $h_{\text{avg}} = 0.5$ .

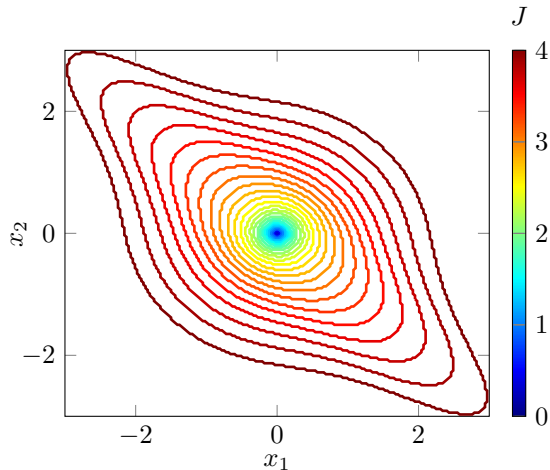


Fig. 6. Trigger bounds for the unstable example, using  $J \in [5 \times 10^{-4}, 4]$ .

time-step  $h_{\text{nom}} = 10^{-3}$ , and averaging the cost and sampling period over the time horizon  $T = 2000$ . The time step  $h_{\text{nom}}$  is approximately 130 times smaller than the smallest time constant of the continuous-time LQG closed-loop system. Note that (c) needs to be simulated in this example, since the average sampling period  $h_{\text{avg}}$  cannot be determined directly from  $V$  and  $J$ . Case (a) is still evaluated using Jitterbug, and (b) is evaluated using (20).

The trade-off curves are presented in Fig. 7. Also this example suggests that sampling scheme rather than controller structure is the main factor for improvement. Note that the ratio of improvement  $J_{\text{ratio}}$  is increasing with  $h_{\text{avg}}$  in this example, whereas it for the integrator  $J_{\text{ratio}}$  was constant. This is in line with [2], [15], where similar observations were made for unstable first-order systems and unstable uncoupled second-order systems respectively.

## V. CONCLUSION AND FUTURE WORK

Based on the work on event-based impulse control in [16], we have presented a framework for finding the optimal event-based sampling scheme for the LQG-optimal sampled-data controller structure. Solving the optimization problem for the sampling scheme is equivalent to finding a value function  $V$ , satisfying a stationary PDE with free boundary. The function  $V$ , and thus the optimal sampling scheme, is available in closed form for the multidimensional integrator case. The sampling scheme then corresponds to an ellipsoidal trigger bound in a linear reset system. Also, a numerical method has been presented for obtaining  $V$  in the second-order general case. Examples show that the trigger bound is not necessarily convex in the general case.

Future work will be focused on refining the methods of obtaining  $V$  for higher-order systems. As long as no closed-form solution is available, more efficient methods for solving the free boundary problem are required before this is a viable design method for sampled-data control synthesis. To this end, it is also important to further investigate properties of the optimal trigger bound, such as uniqueness, and whether it is always star-shaped as in all presented examples.

## VI. ACKNOWLEDGMENTS

The authors would like to thank Toivo Henningsson and Leonid Mirkin for fruitful discussions. Special thanks to Leonid Mirkin for suggesting the simplified scalar search method of Theorem 4.

*Proof of Theorem 4*

After the state transform  $\bar{x}_H = U^\top Q^{\frac{1}{2}} x_H$ , (17) reads

$$\bar{P}\bar{R}\bar{P} + \frac{1}{2} \text{Tr}(\bar{R}\bar{P})\bar{P} = I, \quad (25)$$

where  $\bar{P} = U^\top Q^{-\frac{1}{2}} P Q^{-\frac{1}{2}} U$ . With the ansatz  $\bar{P} = \text{diag}\{p_i\}$ , (25) can be written as

$$p_i^2 r_i + \frac{1}{2} \sum_{j=1}^n (p_j r_j) p_i = 1, \quad \forall i \in \{1, \dots, n\}. \quad (26)$$

Note that if there exists a solution to (26), then it is the unique solution to (25). Defining  $s := \sum_{j=1}^n (p_j r_j) > 0$  and inserting into (26), we get after some straightforward calculations

$$(n+4)s - \sum_{j=1}^n \sqrt{s^2 + 16r_j} = 0, \quad s > 0. \quad (27)$$

Solving (26) is thus equivalent to finding a root of the scalar function  $h$ , defined as the left hand side of (27). Since  $h$  is continuous, with  $\lim_{s \rightarrow 0^+} h(s) = -\sum_{j=1}^n 4\sqrt{r_j} < 0$  and  $\lim_{s \rightarrow \infty} h(s) > 0$ , existence of a solution to (27) is guaranteed. Furthermore, this solution will be unique since  $h$  is strictly increasing, with  $\frac{dh}{ds} > 4$  for all  $s > 0$ .

*Proof of Theorem 5*

We have

$$J_{\text{ratio}} = 2 \frac{\text{Tr}((RP)^2) + \frac{1}{2} \text{Tr}(RP)RP}{[\text{Tr}(RP)]^2} = 2 \frac{\text{Tr}((RP)^2)}{[\text{Tr}(RP)]^2} + 1,$$

where (17) was used in the first equality. Let  $\lambda = [\lambda_1, \dots, \lambda_i, \dots, \lambda_n]^\top$  denote the vector of eigenvalues to  $RP$ . Since  $R \succ 0$ ,  $P \succ 0$ , we have  $\lambda_i > 0, \forall i$ . Thus  $\text{Tr}(RP) = \sum_{i=1}^n \lambda_i = \sum_{i=1}^n |\lambda_i| = \|\lambda\|_1$ . Also,  $\text{Tr}((RP)^2) = \sum_{i=1}^n \lambda_i^2 = \|\lambda\|_2^2$ , which gives

$$J_{\text{ratio}} = 1 + 2 \frac{\text{Tr}((RP)^2)}{[\text{Tr}(RP)]^2} = 1 + 2 \frac{\|\lambda\|_2^2}{\|\lambda\|_1^2}.$$

For the case  $n = 1$ , we have  $\|\lambda\|_2^2 = \|\lambda\|_1^2$  and thus  $J_{\text{ratio}} = 3$ . When  $n \geq 2$ , the Cauchy–Schwarz inequality gives

$$\frac{1}{n} \leq \frac{\|\lambda\|_2^2}{\|\lambda\|_1^2} < 1, \quad (28)$$

from which (21) follows. The lower bound in (28) is attained when  $\lambda_i$  are identical for all  $i$ , while  $J_{\text{ratio}}$  approaches the upper bound when  $\lambda_i \rightarrow 0$  for all but one  $i$ . To show that the same conditions hold for the eigenvalues of  $RQ$ , we multiply (17) with  $R$  from the left and let  $RP = S\mathcal{J}S^{-1}$ , where  $\mathcal{J}$  is the upper triangular Jordan matrix of  $RP$ , and  $S$  is a similarity transform. This gives

$$S(\mathcal{J}^2 + \frac{1}{2} \text{Tr}(\mathcal{J})\mathcal{J})S^{-1} = RQ,$$

which means that  $RQ$  has the same eigenvalues as  $\mathcal{J}^2 + \frac{1}{2} \text{Tr}(\mathcal{J})\mathcal{J}$ . These eigenvalues are given by  $\lambda_i^2 + 1/2 \sum_{j=1}^n \lambda_j \lambda_i$ , and are identical when, and only when,  $\lambda_i$  are identical for all  $i$ . Since  $\lambda_i > 0$ , the eigenvalues also approach zero when, and only when,  $\lambda_i \rightarrow 0$ . Thus the conditions on  $RQ$  are the same as for  $RP$ .

- [1] K. J. Åström and B. Wittenmark, *Computer-Controlled Systems (3rd Ed.)*. Upper Saddle River, NJ: Prentice-Hall, 1997.
- [2] K. J. Åström and B. Bernhardsson, “Comparison of periodic and event based sampling for first-order stochastic systems,” in *Proc. 14th IFAC World Congress*, vol. 11, Beijing, China, 1999, pp. 301–306.
- [3] K.-E. Årzén, “A simple event-based PID controller,” in *Proc. 14th IFAC World Congress*, vol. 18, Beijing, China, 1999, pp. 423–428.
- [4] K. J. Åström, “Event Based Control,” in *Analysis and Design of Nonlinear Control Systems: In Honor of Alberto Isidori*, A. Astolfi and L. Marconi, Eds. Berlin, Heidelberg: Springer, 2008, pp. 127–147.
- [5] W. P. M. H. Heemels, K. H. Johansson, and P. Tabuada, “An introduction to event-triggered and self-triggered control,” in *Proc. 51st IEEE Conf. on Decision and Control*, Maui, HI, USA, 2012, pp. 3270–3285.
- [6] Q. Liu, Z. Wang, X. He, and D. Zhou, “A survey of event-based strategies on control and estimation,” *Systems Science & Control Engineering*, vol. 2, no. 1, pp. 90–97, 2014.
- [7] M. Miskowicz, *Event-Based Control and Signal Processing*, ser. Embedded Systems. Boca Raton, FL: CRC Press, 2015.
- [8] D. Antunes, W. P. M. H. Heemels, and P. Tabuada, “Dynamic programming formulation of periodic event-triggered control: Performance guarantees and co-design,” in *Proc. 51st IEEE Conf. on Decision and Control*, Maui, HI, USA, 2012, pp. 7212–7217.
- [9] J. Arajo, A. Teixeira, E. Henriksson, and K. H. Johansson, “A down-sampled controller to reduce network usage with guaranteed closed-loop performance,” in *Proc. 53rd IEEE Conf. on Decision and Control*, Los Angeles, CA, USA, 2014, pp. 6849–6856.
- [10] D. J. Antunes and B. A. Khashoeei, “Consistent event-triggered methods for linear quadratic control,” in *Proc. 55th IEEE Conf. on Decision and Control*, Las Vegas, NV, USA, 2016, pp. 1358–1363.
- [11] K. Gatsis, A. Ribeiro, and G. J. Pappas, “State-based communication design for wireless control systems,” in *Proc. 55th IEEE Conf. on Decision and Control*, Las Vegas, NV, USA, 2016, pp. 129–134.
- [12] L. Mirkin, “Intermittent redesign of analog controllers via the Youla parameter,” *IEEE Trans. Autom. Control*, vol. 62, no. 4, pp. 1838–1851, 2017.
- [13] M. Braksmayer and L. Mirkin, “ $H_2$  optimization under intermittent sampling and its application to event-triggered control,” in *Proc. 20th IFAC World Congress*, Toulouse, France, 2017.
- [14] A. Goldenshluger and L. Mirkin, “On minimum-variance event-triggered control,” *IEEE Control Systems Lett.*, vol. 1, no. 1, pp. 32–37, 2017.
- [15] X. Meng and T. Chen, “Optimal sampling and performance comparison of periodic and event based impulse control,” *IEEE Trans. Autom. Control*, vol. 57, no. 12, pp. 3252–3259, 2012.
- [16] T. Henningson, “Stochastic event-based control and estimation,” Ph.D. dissertation, Dept. of Automatic Control, Lund University, Sweden, 2012. [Online]. Available: <http://www.control.lth.se/documents/2012/henn.t2012phd.pdf>
- [17] K. Zhou, J. C. Doyle, and K. Glover, *Robust and Optimal Control*. Englewood Cliffs, NJ: Prentice-Hall, 1996.
- [18] J. Stefan, “Über einige Probleme der Theorie der Wärmeleitung,” *Sitzungsber. Wiener Akad. Math. Naturwiss. Abt. 2a*, vol. 98, pp. 473–484, 1888.
- [19] M. K. Bernauer and R. Herzog, “Implementation of an X-FEM solver for the classical two-phase Stefan problem,” *Journal of Scientific Computing*, vol. 52, no. 2, pp. 271–293, 2012.
- [20] J. W. Barrett, H. Garcke, and R. Nürnberg, “Phase field models versus parametric front tracking methods: Are they accurate and computationally efficient?” *Communications in Computational Physics*, vol. 15, no. 2, pp. 506–555, 2014.
- [21] G. W. Recktenwald. (2011) Finite-difference approximations to the heat equation. [Online]. Available: <http://citeseerx.ist.psu.edu/viewdoc/summary?doi=10.1.1.408.4054> (Accessed 2017-03-18).
- [22] B. Lincoln and A. Cervin, “Jitterbug: A tool for analysis of real-time control performance,” in *Proc. 41st IEEE Conf. on Decision and Control*, Las Vegas, NV, USA, 2002, pp. 1319–1324.