



LUND UNIVERSITY

Assessment of PCR-DGGE for the identification of diverse *Helicobacter* species, and application to faecal samples from zoo animals to determine *Helicobacter* prevalence.

Abu Al-Soud, Waleed; Bennedsen, Mads; On, Stephen L. W.; Ouis, Ibn-Sina; Vandamme, Peter; Nilsson, Hans-Olof; Ljungh, Åsa; Wadström, Torkel

Published in:
Journal of Medical Microbiology

DOI:
[10.1099/jmm.0.05314-0](https://doi.org/10.1099/jmm.0.05314-0)

2003

[Link to publication](#)

Citation for published version (APA):
Abu Al-Soud, W., Bennedsen, M., On, S. L. W., Ouis, I.-S., Vandamme, P., Nilsson, H.-O., Ljungh, Å., & Wadström, T. (2003). Assessment of PCR-DGGE for the identification of diverse *Helicobacter* species, and application to faecal samples from zoo animals to determine *Helicobacter* prevalence. *Journal of Medical Microbiology*, 52(9), 765-771. <https://doi.org/10.1099/jmm.0.05314-0>

Total number of authors:
8

General rights

Unless other specific re-use rights are stated the following general rights apply:
Copyright and moral rights for the publications made accessible in the public portal are retained by the authors and/or other copyright owners and it is a condition of accessing publications that users recognise and abide by the legal requirements associated with these rights.

- Users may download and print one copy of any publication from the public portal for the purpose of private study or research.
- You may not further distribute the material or use it for any profit-making activity or commercial gain
- You may freely distribute the URL identifying the publication in the public portal

Read more about Creative commons licenses: <https://creativecommons.org/licenses/>

Take down policy

If you believe that this document breaches copyright please contact us providing details, and we will remove access to the work immediately and investigate your claim.

LUND UNIVERSITY

PO Box 117
221 00 Lund
+46 46-222 00 00

Assessment of PCR-DGGE for the identification of diverse *Helicobacter* species, and application to faecal samples from zoo animals to determine *Helicobacter* prevalence

Waleed Abu Al-Soud,¹ Mads Bennedsen,^{1,2} Stephen L. W. On,³ Ibn-Sina Ouis,¹ Peter Vandamme,⁴ Hans-Olof Nilsson,¹ Åsa Ljungh¹ and Torkel Wadström¹

Correspondence
Waleed Abu Al-Soud
abu.al-soud@mmb.lu.se

¹Department of Medical Microbiology, Dermatology and Infection, Lund University, Sölvegatan 23, SE-223 62 Lund, Sweden

²Department of Clinical Microbiology 7806, National University Hospital, Righospitalet, Tagensvej 20, DK-2200, Copenhagen, Denmark

³Danish Veterinary Institute, Bülowsvej 27, DK-1790, Copenhagen, Denmark

⁴Laboratorium voor Microbiologie, University of Ghent, Belgium

Helicobacter species are fastidious bacterial pathogens that are difficult to culture by standard methods. A PCR-denaturing gradient gel electrophoresis (PCR-DGGE) technique for detection and identification of different *Helicobacter* species was developed and evaluated. The method involves PCR detection of *Helicobacter* DNA by genus-specific primers that target 16S rDNA and subsequent differentiation of *Helicobacter* PCR products by use of DGGE. Strains are identified by comparing mobilities of unknown samples to those determined for reference strains; sequence analysis can also be performed on purified amplicons. Sixteen DGGE profiles were derived from 44 type and reference strains of 20 *Helicobacter* species, indicating the potential of this approach for resolving infection of a single host by multiple *Helicobacter* species. Some more highly related species were not differentiated whereas in highly heterogeneous species, sequence divergence was observed and more than one PCR-DGGE profile was obtained. Application of the PCR-DGGE method to DNA extracted from faeces of zoo animals revealed the presence of *Helicobacter* DNA in 13 of 16 samples; a correlation was seen between the mobility of PCR products in DGGE analysis and DNA sequencing. In combination, this indicated that zoo animals are colonized by a wide range of different *Helicobacter* species; seven animals appeared to be colonized by multiple *Helicobacter* species. By this approach, presumptive identifications were made of *Helicobacter bilis* and *Helicobacter hepaticus* in a Nile crocodile, *Helicobacter cinaedi* in a baboon and a red panda, and *Helicobacter felis* in a wolf and a Taiwan beauty snake. All of these PCR products (~400 bp) showed 100% sequence similarity to 16S rDNA sequences of the mentioned species. These results demonstrate the potential of PCR-DGGE-based analysis for identification of *Helicobacter* species in complex ecosystems, such as the gastrointestinal tract, and could contribute to a better understanding of the ecology of helicobacters and other pathogens with a complex aetiology.

Received 19 March 2003
Accepted 14 May 2003

INTRODUCTION

Helicobacters are Gram-negative, usually spiral-shaped bacteria that colonize the gastrointestinal tract of man and many animals, including domestic species such as cats, dogs, pigs

and poultry (Wadström & Hänninen, 1999; Choi *et al.*, 2001; On, 2001). At the time of writing, the genus *Helicobacter* contains 23 species with validly published names, including *Helicobacter nemestrinae* (Fox, 2002; On *et al.*, 2002), and is rapidly expanding: over 25 novel species have been described in the past 10 years. Of the extant species, *Helicobacter pylori* is considered to be a major cause of chronic gastritis and

Abbreviation: DGGE, denaturing gradient gel electrophoresis.

duodenal and peptic ulcers in man (Nomura *et al.*, 1994; Dunn *et al.*, 1997). Taxa such as *Helicobacter acinonychis*, *Helicobacter mustelae*, *Helicobacter bizzozeronii*, *Helicobacter felis* and 'Candidatus *H. suis*' are associated with similar gastric diseases in various animal hosts, such as cheetahs, ferrets, cats, dogs and pigs (Fox, 1997). Animals used for biomedical research are commonly colonized by intestinal *Helicobacter* species (Fox, 1997; Goto *et al.*, 2000; Shen *et al.*, 2001) and there is an increasing body of evidence that shows that enteric and hepatic disease in humans and animals may be caused by taxa that include *Helicobacter canadensis*, *Helicobacter hepaticus* and *Helicobacter bilis* (On *et al.*, 2002). Infections that involve multiple *Helicobacter* species are also known (Jalava *et al.*, 1998).

The majority of *Helicobacter* species are difficult, or as yet impossible, to culture (Fox, 2002). It is therefore difficult to establish specific diagnostic methods for the increasing number of *Helicobacter* species. Establishment of serology-based diagnostic methods is not possible without bacterial culture; accurate diagnosis of mixed *Helicobacter* infections may require PCR-based assays that use a combination of *Helicobacter* species- and/or genus-specific primers and DNA sequencing. Species-specific PCR assays are difficult to validate for unculturable taxa and sequencing of cloned *Helicobacter* genus-specific PCR products is slow, expensive and not suitable for handling many samples. To improve our knowledge of the relatedness of *Helicobacter* species to various gastric, hepatic and enteric diseases, there is a need for new diagnostic methods to detect and identify *Helicobacter* species in clinical samples.

The 16S rRNA gene consists of highly conserved and highly variable regions (Gray *et al.*, 1984). One of the most efficient methods used to exploit 16S rDNA sequence divergence that is frequently observed in various species is denaturing gradient gel electrophoresis (DGGE) (Muyzer, 1999). DNA fragments of the same size but with different sequence compositions are separated in denaturing gradient gels that contain a linear gradient of DNA denaturants (urea and formamide); by this method, a single-base change in a given sequence can be resolved (Fischer & Lerman, 1983). Therefore, PCR-DGGE has great potential to identify closely related species based on 16S rRNA gene sequence divergence. However, comparatively few studies have applied PCR-DGGE for the identification and diagnosis of micro-organisms (de Oliveira *et al.*, 1999; Tannock *et al.*, 1999; Grehan *et al.*, 2002; Requena *et al.*, 2002). In this study, a PCR-DGGE technique was optimized for rapid identification of 20 *Helicobacter* species and used to study the intestinal *Helicobacter* flora of zoo animals.

METHODS

Bacterial strains and DNA extraction. Reference *Helicobacter* strains included in this study represented 20 species (Table 1). DNA was extracted with a QIAamp DNA kit (Qiagen) or an Easy-DNA kit (Invitrogen) according to the manufacturers' instructions and stored at -20°C .

Zoo animals. Faecal samples of 16 different animals from Copenhagen Zoo, Denmark, were collected in sterile plastic tubes (50 ml) and stored at -20°C . Details of the animals examined are given in Table 2. DNA was extracted from 200 mg frozen faeces by using a QIAamp Stool kit

Table 1. *Helicobacter* strains used in this study for construction and validation of PCR-DGGE assay

<i>Helicobacter</i> sp.	Strain designation
<i>H. acinonychis</i>	CCUG 29263 ^T
<i>H. bilis</i>	CCUG 38995 ^T , CCUG 41387
<i>H. bizzozeronii</i>	AF 53 (kindly provided by Dr L. P. Andersen, National University Hospital, Copenhagen, Denmark) and Hänninen isolate (kindly provided by Dr M.-L. Hänninen, University of Helsinki, Helsinki, Finland)
<i>H. canis</i>	CCUG 32756 ^T , CCUG 33835
<i>H. cholecystus</i>	CCUG 38167
<i>H. cinaedi</i>	CCUG 43521, R 5758, R 3026, ADN 0413, CCUG 33804
<i>H. felis</i>	CCUG 37850, CCUG 28540, CCUG 28539 ^T
<i>H. fennelliae</i>	CCUG 32184, CCUG 18820 ^T
<i>H. ganmani</i>	CCUG 43526 ^T , CCUG 43527
<i>H. hepaticus</i>	CCUG 44777, CCUG 33637 ^T
<i>H. muridarum</i>	CCUG 29262 ^T , Ferrero isolate (kindly provided by Dr Richard L. Ferrero, Pasteur Institute, Paris, France)
<i>H. mustelae</i>	NCTC 12198 ^T
<i>H. pametensis</i>	CCUG 29255 ^T , CCUG 29259
<i>H. pullorum</i>	NCTC 12825, NCTC 12827, CCUG 33837 ^T , CCUG 33839, CCUG 33840
<i>H. pylori</i>	CCUG 17875, CCUG 17874 ^T , 119/95, 007
' <i>H. rappini</i> '	CCUG 23435
<i>H. rodentium</i>	1707, 2060, 2178
<i>H. salomonis</i>	CCUG 37848, CCUG 37845 ^T
<i>H. suncus</i>	Goto isolate (kindly provided by Dr Kazuo Goto, Central Institute for Experimental Animals, Kawasaki, Kanagawa, Japan)
<i>H. trogontum</i>	MIT 955.369.9136

Table 2. Zoo animal species included in this study and results of PCR-DGGE and sequence similarity by using the BLAST algorithm

Species	DGGE results	Sequence similarity (accession number)
Pig deer (<i>Babyrousa babyrousa</i>)	Unidentified strain <i>H. bizzozeronii</i> , <i>H. felis</i> or <i>H. salomonis</i>	408/408 (100%) <i>Helicobacter</i> sp. (AF333340) 415/420 (98%) <i>H. cinaedi</i> (AF207739)
Nile crocodile (<i>Crocodylus niloticus</i>)	<i>H. hepaticus</i> , <i>H. cinaedi</i> <i>H. bilis</i> , <i>H. canis</i> , <i>H. ganmani</i> or <i>H. rodentium</i>	405/405 (100%) <i>H. hepaticus</i> (L39122) 403/404 (99%) <i>H. bilis</i> (U51873)
Sea lion (<i>Zalophus californicus</i>)	<i>H. pylori</i> or <i>H. cinaedi</i>	420/423 (99%) <i>Helicobacter</i> sp. (AF107494)
Ruffed lemur (<i>Varecia variegatus</i>)	<i>H. bizzozeronii</i> , <i>H. felis</i> or <i>H. salomonis</i>	420/425 (98%) <i>H. cinaedi</i> (AF207739)
Cotton-top tamarin (<i>Saquinus oedipus</i>)	<i>H. bizzozeronii</i> , <i>H. felis</i> or <i>H. salomonis</i> <i>H. bizzozeronii</i> or <i>H. salomonis</i>	420/425 (98%) <i>H. cinaedi</i> (AF207739) 413/422 (97%) <i>H. ganmani</i> (AF000224)
Brown bear (<i>Ursus actus</i>)	<i>H. pylori</i> , <i>H. cinaedi</i>	400/405 (98%) <i>Helicobacter</i> sp. (AF333339)
Wild boar (<i>Sus scrofa</i>)	Unidentified strain <i>H. bizzozeronii</i> , <i>H. felis</i> or <i>H. salomonis</i> <i>H. bizzozeronii</i> or <i>H. salomonis</i>	392/398 (98%) ' <i>H. winghamensis</i> ' (AF363063) 391/399 (97%) <i>H. cinaedi</i> (AF207739) 413/422 (97%) <i>H. ganmani</i> (AF000224)
Polar bear (<i>Ursus maritimus</i>)	Unidentified strain <i>H. pylori</i> or <i>H. cinaedi</i>	414/422 (98%) <i>Helicobacter</i> sp. (AF333340) 398/403 (98%) <i>Helicobacter</i> sp. (AF333339)
Baboon (<i>Papio hamadryas</i>)	<i>H. bilis</i> , <i>H. canis</i> , <i>H. ganmani</i> or <i>H. rodentium</i> <i>H. fennelliae</i>	408/408 (100%) <i>Helicobacter</i> sp. (AF333339) 407/407 (100%) <i>H. cinaedi</i> strain (AF207739)
Siberian tiger (<i>Panthera tigris altaica</i>)	<i>H. pylori</i> or <i>H. cinaedi</i>	411/414 (99%) <i>Helicobacter</i> sp. (AF107494)
Red panda (<i>Ailurus fulgens fulgens</i>)	<i>H. bilis</i> , <i>H. canis</i> , <i>H. ganmani</i> or <i>H. rodentium</i> <i>H. hepaticus</i> , <i>H. cinaedi</i>	405/409 (99%) ' <i>H. rappini</i> ' (AF286052) 378/378 (100%) <i>H. cinaedi</i> (AF396081)
Wolf (<i>Canis lupus</i>)	<i>H. bizzozeronii</i> , <i>H. felis</i> or <i>H. salomonis</i>	399/399 (100%) <i>H. felis</i> (HFU51871)
Taiwan beauty snake (<i>Elaphe taenium freesei</i>)	<i>H. bizzozeronii</i> , <i>H. felis</i> or <i>H. salomonis</i>	378/378 (100%) <i>H. felis</i> (HFU51871)

(Qiagen) according to the manufacturer's instructions. Extracted DNA was stored at -20°C .

PCR mixture and incubation conditions. Amplification was carried out by using a GeneAmp PCR System 2700 thermocycler (Applied Biosystems) and *Helicobacter* genus-specific primers (Table 3), previously published by Goto *et al.* (2000). The reaction mixture for the first step (25 μl) contained 0.5 μM each primer (1F and 1R), 0.2 mM each dNTP (Pharmacia Biotech), 1 \times chelating buffer, 2.5 mM MgCl_2 , 0.4% (w/v) BSA, 1.25 U r*Tth* DNA polymerase (Applied Biosystems) and 5 μl extracted DNA. Amplification conditions for the first step were: 94 $^{\circ}\text{C}$ for 2 min; 30 cycles of 94 $^{\circ}\text{C}$ for 30 s, 55 $^{\circ}\text{C}$ for 30 s and 72 $^{\circ}\text{C}$ for 30 s; and finally, 72 $^{\circ}\text{C}$ for 5 min. The reaction mixture for the second step (25 μl) contained 0.5 μM each primer (1F with a GC-clamp and 2R), 0.2 mM each dNTP, 1 \times buffer II, 2.5 mM MgCl_2 , 1.0 U AmpliTaq Gold DNA

polymerase (Applied Biosystems) and 2 μl 10 \times diluted PCR product from the first step. Amplification conditions for the second step were: 95 $^{\circ}\text{C}$ for 10 min; 35 cycles of 94 $^{\circ}\text{C}$ for 30 s, 55 $^{\circ}\text{C}$ for 30 s and 72 $^{\circ}\text{C}$ for 30 s; and finally, 72 $^{\circ}\text{C}$ for 5 min. As a positive control, 0.1 ng *H. pylori* CCUG 17874^T DNA was added to the reaction mixture; 5 μl sterile, Millipore-filtered, deionized water was used as a negative control. The 0.47 kb PCR product was electrophoresed in 1.5% agarose gel that contained ethidium bromide (Sambrook *et al.*, 1989) and visualized by the use of a GelFotoSystem (Tehtum Lab).

DGGE. 16S rDNA sequences of different *Helicobacter* species were analysed by Melt94 (<http://web.mit.edu/osp/www/melt.html>) to assist in primer selection and to determine DGGE conditions. DNA extracted from reference *Helicobacter* strains and faeces of zoo animals was used as a template to amplify the V6–7 region of 16S rDNA by using primers

Table 3. *Helicobacter* genus-specific PCR primers, targeting 16S rDNA, that were used in this study

Primer*	Primer sequence	PCR product size (bp)
First PCR step:		~780
1F (254–271)	CTATGACGGGTATCCGGC	
1R (1018–1035)	CTCACGACACGAGCTGAC	
Second step:		~470
1F-GC	(GCGGCCGCCCCGTCCCGCCGCCCCCGCCCCGCCGCGG CCGCCTATGACGGGTATCCGGC)	
2R (667–686)	TCGCCTTCGCAATGAGT TT	

*Primer positions are based on the sequence of *Escherichia coli* 16S rDNA.

1F-GC and 2R (Table 3). DGGE analysis of amplicons (15 µl) was performed on 9% polyacrylamide (37.5:1 acrylamide/bisacrylamide) gels that contained a 15–30% urea plus formamide gradient [100% denaturing solution contains 7 M urea and 40% (v/v) formamide]. Electrophoresis was performed in 0.5× TAE at 200 V at 60 °C for 4 h by using a DCode System for DGGE (Bio-Rad). Gels were stained with ethidium bromide (0.2 µg ml⁻¹ in 0.5× TAE) for 15 min and visualized by using a GelFotoSystem (Tehtum Lab).

16S rDNA sequence analysis. Separated DNA fragments were cut from DGGE gels with a scalpel and transferred to microcentrifuge tubes that contained 160 µl sterile, Millipore-filtered, deionized water. Tubes were centrifuged briefly and placed in a freezer at -80 °C for 1 h, then thawed at room temperature for 1 h and frozen again at -80 °C for 1 h. Samples were then thawed at 4 °C for 2 h. A sample of 2.0 µl was used as the template in a PCR mixture that contained primers 1F and 2R, using the same conditions as for the second step described above. *Helicobacter* genus-specific PCR products were purified from agarose gels by Ultra-free-DA centrifuge tubes (Millipore). Sequencing of both DNA strands was performed with an ABI 310 DNA sequencer (Applied Biosystems) by using the ABI PRISM BigDye Terminator Cycle Sequencing Ready Reaction kit version 3.0 (Applied Biosystems). Sequences were checked by using BioEdit software (<http://www.mbio.ncsu.edu/BioEdit/bioedit.html>). The closest known relatives of the partial 16S rDNA sequences were determined by using BLASTN 2.2.1 (<http://www.ncbi.nlm.nih.gov/blast/>) (Altschul *et al.*, 1997).

RESULTS

Development of DGGE for identification of *Helicobacter* species

The sensitivity of the semi-nested assay and agarose gel electrophoresis was 500 c.f.u. *H. pylori* (g spiked faeces)⁻¹ (data not shown). Multiple strains of each of 15 species were examined to assess the possible effect of infraspecific variance on the DGGE analysis. PCR products from strains of 10 of 15 species examined gave the same degree of mobility in DGGE as the type (or other reference) strain, i.e. no sequence divergence was detected. Such consistent results were obtained for strains of *Helicobacter muridarum* ($n = 2$), *Helicobacter canis* ($n = 2$), *Helicobacter pullorum* ($n = 5$), *H. pylori* ($n = 4$), *H. bilis* ($n = 2$), *Helicobacter ganmani* ($n = 2$), *Helicobacter rodentium* ($n = 3$) and *H. hepaticus* ($n = 2$). Species for which more than one profile was obtained included *H. felis* (two profiles from three strains), *Helicobacter cinaedi* (three profiles from five strains), *H. bizzozeronii* (two profiles from two strains), *Helicobacter fennelliae* (two profiles from two strains) and *H. salomonis* (two profiles from two strains).

In addition, some PCR products derived from strains of distinct taxa could not be distinguished on the basis of their mobility. Consequently, *H. bilis*, *H. canis*, *H. ganmani* and *H. rodentium*; *Helicobacter pametensis* and *H. pullorum*; *Helicobacter suncus* and *Helicobacter trogontum*; *H. cinaedi* (CCUG 33804) and *H. hepaticus*; *H. bizzozeronii* (AF 53) and *H. salomonis* (CCUG 37848); *H. felis* (CCUG 37850), *H. salomonis* (CCUG 37845^T) and *H. bizzozeronii* (Hänninen isolate) were not differentiated (Fig. 1).

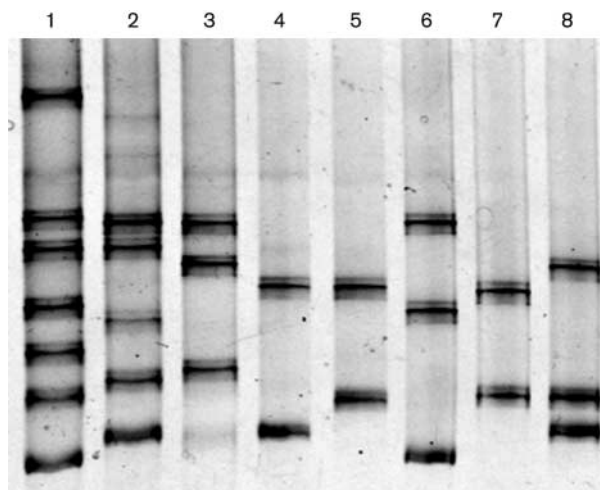


Fig. 1. Separation of PCR products amplified by genus-specific primers from different *Helicobacter* species in a 9% polyacrylamide 15–30% denaturing gradient gel (increasing gradient of denaturant from top to bottom). Lanes: 1, *H. muridarum* (CCUG 29262^T), *H. canis* (CCUG 32756^T), *H. pullorum* (NCTC 12825), *H. pylori* (CCUG 17875), *Helicobacter cholecystus* (CCUG 38167), *H. fennelliae* (CCUG 32184) and *H. bizzozeronii* (Hänninen isolate); 2, *H. bilis* (CCUG 38995^T), *H. pametensis* (CCUG 29255^T), *H. mustelae* (NCTC 12198^T), *H. rappini* (CCUG 23435) and *H. felis* (CCUG 37850); 3, *H. ganmani* (CCUG 43526^T), *H. suncus* (Goto isolate), *H. felis* (CCUG 28540) and *H. acinonychis* (CCUG 29263^T); 4, *H. cinaedi* (CCUG 43521) and *H. salomonis* (CCUG 37845^T); 5, *H. cinaedi* (R 5758) and *H. hepaticus* (CCUG 33637^T); 6, *H. rodentium* (R 1707), *H. cinaedi* (R 3026) and *H. salomonis* (CCUG 37848); 7, *H. cinaedi* (ADN 0413) and *H. cinaedi* (CCUG 33804); 8, *H. trogontum* (955.369.9136), *H. cinaedi* (CCUG 33804) and *H. bizzozeronii* (AF 53).

PCR-DGGE analysis and DNA sequence analysis of *Helicobacter* species of zoo animals

The semi-nested PCR assay and DGGE analysis detected *Helicobacter* DNA in 13 of 16 zoo animals tested. All distinct PCR products were sequenced and compared to those in GenBank by BLAST to verify the DGGE results. The results are summarized in Table 2; a wide range of helicobacters (principally associated with the lower intestinal tract) was found among the different animals examined. Multiple DNA fragments, an indication of colonization by more than one *Helicobacter* species, were present in the DGGE profiles of seven animals (Fig. 2).

DISCUSSION

Helicobacter species are widely distributed in the gastrointestinal tract of mammals, birds and other animals. An accurate assessment of their prevalence in various environments is important to improve our understanding of their role in gastric, enteric and hepatic disease and for evaluation of their potential as zoonotic agents. Substantial problems involved in isolation and identification of these bacteria

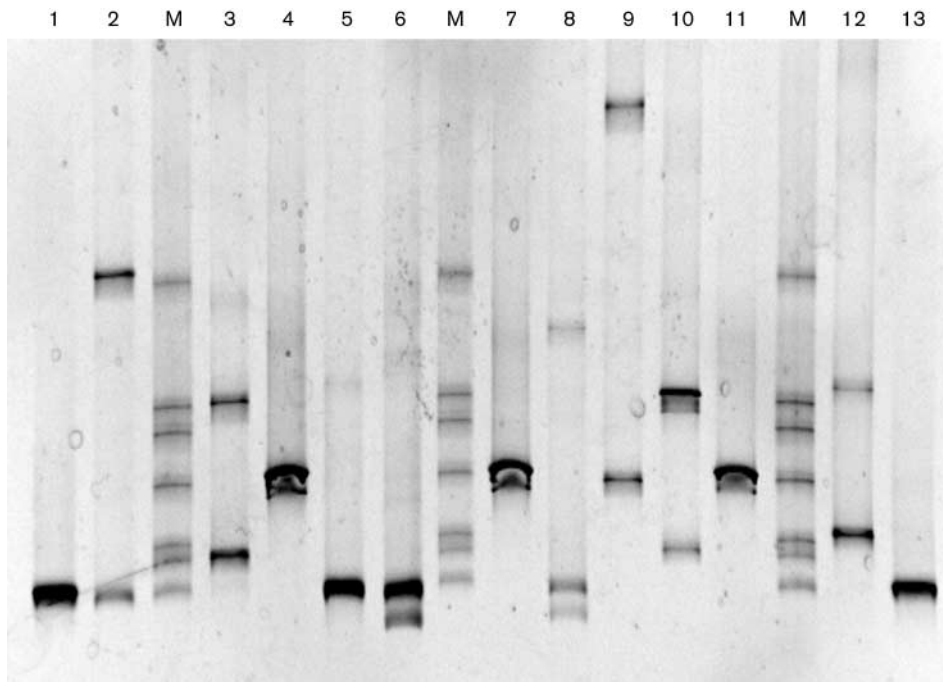


Fig. 2. PCR-DGGE analysis of PCR products, amplified by the semi-nested *Helicobacter* genus-specific PCR assay, of DNA isolated from faeces of 13 animals from Copenhagen Zoo. Lanes: 1, wolf; 2, pig deer; 3, Nile crocodile; 4, sea lion; 5, ruffed lemur; 6, cotton-top tamarin; 7, brown bear; 8, wild boar; 9, polar bear; 10, baboon; 11, tiger; 12, red panda; 13, Taiwan beauty snake. M, migration ladder [PCR products amplified from (top to bottom)]: *H. muridarum* (CCUG 29262^T), *H. bilis* (CCUG 38995^T), *H. pullorum* (NCTC 12825), *H. pylori* (CCUG 17875), '*H. rappini*' (CCUG 23435), *H. hepaticus* (CCUG 33637^T) and *H. bizzozeronii* (AF 53).

greatly hinder such studies. Clearly, the availability of a sensitive, culture-independent method that is capable of detecting a broad taxonomic range of helicobacters would be a valuable investigative tool in this regard.

PCR-DGGE is more frequently applied to evaluate the microbial diversity of complex environments. However, by altering the primer targets, the specificity of the method can be tailored to detect specific bacterial groups (de Oliveira *et al.*, 1999; Tannock *et al.*, 1999; Grehan *et al.*, 2002; Requena *et al.*, 2002) or even strains (Nielsen *et al.*, 2000). Although one study has described a PCR-DGGE method to identify *Helicobacter* species found in the rodent intestine (Grehan *et al.*, 2002), its restricted scope makes it of limited value for the investigation of the wider issues mentioned above. In our study, we developed and evaluated a PCR-DGGE approach that was intended for use in the identification and detection of a broader range of helicobacters that are associated with gastric, enteric or hepatic disease in a wide host range.

We selected 16S rDNA as the target because it contains both conserved and highly variable regions and gene sequences for almost all *Helicobacter* species are available in public databases. In our study, 16 DGGE profiles were derived from the reference strains (representing 20 extant species), indicating the potential of this approach for resolving multiple *Helico-*

bacter species that infect a single host (Jalava *et al.*, 1998). However, a number of species that are regarded as taxonomically highly related could not be differentiated and, in some species, sequence divergence was observed such that more than one PCR-DGGE profile was obtained. These observations correlate with our current knowledge of 16S rRNA gene sequence heterogeneity among helicobacters [reviewed by On (2001)] and illustrate some of the shortcomings of relying on this gene for species identification.

Results that were obtained when the method was subsequently applied to faecal samples from zoo animals illustrate some important features of this approach. Firstly, the results validate the use of a semi-nested PCR for direct examination of samples. This approach was selected instead of the more common one-step PCR assay to increase its specificity and sensitivity; nested PCR can be 10⁴-fold more sensitive than one-step PCR (Stärk *et al.*, 1998). The PCR assay was further optimized by using: (i) a DNA polymerase that is less sensitive to PCR inhibitors (*rTth* DNA polymerase); (ii) an amplification facilitator (BSA) in the first amplification step; and (iii) a hot-start enzyme (AmpliTaQ Gold DNA polymerase) in the second amplification step. These three factors are known to improve the sensitivity and specificity of analytical PCR (Abu Al-Soud & Rådström, 2000, 2001). Detection of *Helicobacter* DNA in 13 of 16 faecal samples

illustrates the efficacy of our approach. Moreover, the advantages of the DGGE approach are illustrated by seven of the 13 PCR-positive samples, which yielded several 16S rDNA sequence types; this indicates that many animal hosts harbour more than one species of *Helicobacter* in their gastrointestinal tract, a finding that would be difficult to resolve by conventional culture methods.

Sequence analysis of distinct products suggested that several animal hosts (to our knowledge, hitherto unexamined for *Helicobacter* spp.) harbour potentially novel *Helicobacter* species. In addition, our results suggest that species such as *H. cinaedi*, *H. hepaticus*, *H. felis*, *H. bizzozeronii* and *H. canis* may have a greater zoonotic potential than is presently recognized, as these species appear to exhibit a broad host range. However, we emphasize that such results should be treated with caution, as species such as *H. cinaedi* and *H. trogontum* show substantial (4–5 %) infraspecific divergence in their 16S rRNA genes (Vandamme *et al.*, 2000; Hänninen *et al.*, 2003), leading to anomalous results in both DGGE and sequence analyses. Nevertheless, such extensive diversity was not detected in many species examined and, for these species, the method may function well as an accurate front-line identification tool, as with other bacteria. Further work on more strains is needed to fully elucidate the level of diversity in the 16S rRNA gene among helicobacters, to ascertain the security of identification by this approach. Improvements can be expected from extending both DGGE and sequence databases in tandem. The use of alternative gene targets to 16S rDNA could also prove beneficial, as suggested previously (On, 2001): the transaldolase gene has already been shown to be useful for PCR-DGGE-based discrimination of human bifidobacteria (Requena *et al.*, 2002).

In conclusion, our study has demonstrated that PCR-DGGE analysis has considerable potential for identification of *Helicobacter* species and investigation of multiple species infections in complex ecosystems such as the gastrointestinal tract.

ACKNOWLEDGEMENTS

We thank Carsten Grøndal, Copenhagen Zoo, Denmark, for helping us to collect zoo animals' faecal samples. We thank Dr Leif P. Andersen (National University Hospital, Copenhagen, Denmark) and Dr M.-L. Hänninen (University of Helsinki, Helsinki, Finland) for providing us with *H. bizzozeronii* strains. Also, we thank Dr Richard L. Ferrero (Pasteur Institute, Paris, France) for providing us with one *H. muridarum* strain. This study was supported by a grant from the Swedish Medical Research Council (16X-04723), the Royal Physiographic Society in Lund and the University Hospital in Lund.

REFERENCES

Abu Al-Soud, W. & Rådström, P. (2000). Effects of amplification facilitators on diagnostic PCR in the presence of blood, feces, and meat. *J Clin Microbiol* **38**, 4463–4470.

Abu Al-Soud, W. & Rådström, P. (2001). Purification and characterization of PCR-inhibitory components in blood cells. *J Clin Microbiol* **39**, 485–493.

Altschul, S. F., Madden, T. L., Schäffer, A. A., Zhang, J., Zhang, Z., Miller,

W. & Lipman, D. J. (1997). Gapped BLAST and PSI-BLAST: a new generation of protein database search programs. *Nucleic Acids Res* **25**, 3389–3402.

Choi, Y. K., Han, J. H. & Joo, H. S. (2001). Identification of novel *Helicobacter* species in pig stomachs by PCR and partial sequencing. *J Clin Microbiol* **39**, 3311–3315.

de Oliveira, V. M., Coutinho, H. L., Sobral, B. W., Guimaraes, C. T., van Elsas, J. D. & Manfio, G. P. (1999). Discrimination of *Rhizobium tropici* and *R. leguminosarum* strains by PCR-specific amplification of 16S-23S rDNA spacer region fragments and denaturing gradient gel electrophoresis (DGGE). *Lett Appl Microbiol* **28**, 137–141.

Dunn, B. E., Cohen, H. & Blaser, M. J. (1997). *Helicobacter pylori*. *Clin Microbiol Rev* **10**, 720–741.

Fischer, S. G. & Lerman, L. S. (1983). DNA fragments differing by single base-pair substitutions are separated in denaturing gradient gels: correspondence with melting theory. *Proc Natl Acad Sci U S A* **80**, 1579–1583.

Fox, J. G. (1997). The expanding genus of *Helicobacter*: pathogenic and zoonotic potential. *Semin Gastrointest Dis* **8**, 124–141.

Fox, J. G. (2002). The non-*H. pylori* helicobacters: their expanding role in gastrointestinal and systemic diseases. *Gut* **50**, 273–283.

Goto, K., Ohashi, H., Takakura, A. & Itoh, T. (2000). Current status of *Helicobacter* contamination of laboratory mice, rats, gerbils, and house musk shrews in Japan. *Curr Microbiol* **41**, 161–166.

Gray, M. W., Sankoff, D. & Cedergren, R. J. (1984). On the evolutionary descent of organisms and organelles: a global phylogeny based on a highly conserved structural core in small subunit ribosomal RNA. *Nucleic Acids Res* **12**, 5837–5852.

Grehan, M., Tamotia, G., Robertson, B. & Mitchell, H. (2002). Detection of *Helicobacter* colonization of the murine lower bowel by genus-specific PCR-denaturing gradient gel electrophoresis. *Appl Environ Microbiol* **68**, 5164–5166.

Hänninen, M.-L., Utriainen, M., Happonen, I. & Dewhirst, F. E. (2003). *Helicobacter* sp. flexispira 16S rDNA taxa 1, 4 and 5 and Finnish porcine *Helicobacter* isolates are members of the species *Helicobacter trogontum* (taxon 6). *Int J Syst Evol Microbiol* **53**, 425–433.

Jalava, K., On, S. L. W., Vandamme, P. A. R., Happonen, I., Sukura, A. & Hänninen, M.-L. (1998). Isolation and identification of *Helicobacter* spp. from canine and feline gastric mucosa. *Appl Environ Microbiol* **64**, 3998–4006.

Muyzer, G. (1999). DGGE/TGGE a method for identifying genes from natural ecosystems. *Curr Opin Microbiol* **2**, 317–322.

Nielsen, E. M., Engberg, J., Fussing, V., Petersen, L., Brogren, C.-H. & On, S. L. W. (2000). Evaluation of phenotypic and genotypic methods for subtyping *Campylobacter jejuni* isolates from humans, poultry, and cattle. *J Clin Microbiol* **38**, 3800–3810.

Nomura, A., Stemmermann, G. N., Chyou, P. H., Perez-Perez, G. I. & Blaser, M. J. (1994). *Helicobacter pylori* infection and the risk for duodenal and gastric ulceration. *Ann Intern Med* **120**, 977–981.

On, S. L. W. (2001). Taxonomy of *Campylobacter*, *Arcobacter*, *Helicobacter* and related bacteria: current status, future prospects and immediate concerns. *Symp Ser Soc Appl Microbiol*, 1S–15S.

On, S. L. W., Hynes, S. & Wadström, T. (2002). Extragastric *Helicobacter* species. *Helicobacter* **7** (Suppl. 1), 63–67.

Requena, T., Burton, J., Matsuki, T., Munro, K., Simon, M. A., Tanaka, R., Watanabe, K. & Tannock, G. W. (2002). Identification, detection, and enumeration of human *Bifidobacterium* species by PCR targeting the transaldolase gene. *Appl Environ Microbiol* **68**, 2420–2427.

Sambrook, J., Fritsch, E. F. & Maniatis, T. (1989). *Molecular Cloning: a Laboratory Manual*, 2nd edn. Cold Spring Harbor, NY: Cold Spring Harbor Laboratory.

Shen, Z., Feng, Y., Dewhirst, F. E. & Fox, J. G. (2001). Coinfection of enteric *Helicobacter* spp. and *Campylobacter* spp. in cats. *J Clin Microbiol* **39**, 2166–2172.

Stärk, K. D. C., Nicolet, J. & Frey, J. (1998). Detection of *Mycoplasma hyopneumoniae* by air sampling with a nested PCR assay. *Appl Environ Microbiol* **64**, 543–548.

Tannock, G. W., Tilsala-Timisjarvi, A., Rodtong, S., Ng, J., Munro, K. & Alatossava, T. (1999). Identification of *Lactobacillus* isolates from the

gastrointestinal tract, silage, and yoghurt by 16S-23S rRNA gene intergenic spacer region sequence comparisons. *Appl Environ Microbiol* **65**, 4264–4267.

Vandamme, P., Harrington, C. S., Jalava, K. & On, S. L. (2000). Misidentifying helicobacters: the *Helicobacter cinaedi* example. *J Clin Microbiol* **38**, 2261–2266.

Wadström, T. & Hänninen, M. L. (1999). Other helicobacters in the digestive tract. *Curr Opin Gastroenterol* **15**, S53–S56.