



LUND UNIVERSITY

A 3D-continuum model for paperboard possessing a high degree of anisotropy.

Borgqvist, Eric; Wallin, Mathias; Ristinmaa, Matti; Tryding, Johan

2015

[Link to publication](#)

Citation for published version (APA):

Borgqvist, E., Wallin, M., Ristinmaa, M., & Tryding, J. (2015). *A 3D-continuum model for paperboard possessing a high degree of anisotropy.*. Abstract from 9th European Solid Mechanics Conference, 2015, Madrid, Spain.

Total number of authors:

4

General rights

Unless other specific re-use rights are stated the following general rights apply:

Copyright and moral rights for the publications made accessible in the public portal are retained by the authors and/or other copyright owners and it is a condition of accessing publications that users recognise and abide by the legal requirements associated with these rights.

- Users may download and print one copy of any publication from the public portal for the purpose of private study or research.
- You may not further distribute the material or use it for any profit-making activity or commercial gain
- You may freely distribute the URL identifying the publication in the public portal

Read more about Creative commons licenses: <https://creativecommons.org/licenses/>

Take down policy

If you believe that this document breaches copyright please contact us providing details, and we will remove access to the work immediately and investigate your claim.

LUND UNIVERSITY

PO Box 117
221 00 Lund
+46 46-222 00 00

A 3D-continuum model for paperboard possessing a high degree of anisotropy.

Eric Borgqvist[†], Mathias Wallin[†], Matti Ristinmaa[†] and Johan Tryding[‡]

[†]Division of Solid Mechanics, Lund University, Box-118, S-221 00 Lund, Sweden
Eric.Borgqvist@solid.lth.se

[‡] Tetra Pak, Ruben Rausings gata, 221 86, Lund, Sweden

ABSTRACT

Paperboard is a fibrous material made from cellulose wood fibers. The paperboard possess a high degree of anisotropy, which stems from the manufacture procedure where the majority of fibers becomes aligned in the MD-direction (Machine Direction). Classically, paperboard is characterized as an orthotropic material where the normals to the symmetry planes are denoted as MD, CD (Cross Direction) and ZD (out-of-plane). The magnitude of the material properties in MD are typically 2-3 times higher compared to CD properties and about one magnitude higher compared to ZD properties, cf. [1]. Due to the large difference in the mechanical properties between the in-plane and out-of-plane directions, a combination of continuum and cohesive elements, cf. [2] has traditionally been employed to model the large anisotropy. In this work, a model, which is able to handle the large degree of anisotropy using a purely continuum based model, is presented.

To handle the anisotropy, three vectors are introduced, which phenomenologically represent the MD, CD and ZD directions of the material, denoted as $\mathbf{v}_0^{(MD)}$, $\mathbf{v}_0^{(CD)}$ and $\mathbf{n}_0^{(ZD)}$ in the reference configuration. It is assumed that the in-plane vectors deform as line segments and the out-of-plane direction deforms as a normal vector. The mapping to the deformed configuration is then given by

$$\begin{aligned}\mathbf{v}^{(MD)} &= \mathbf{F}^e \mathbf{v}_0^{(MD)} \\ \mathbf{v}^{(CD)} &= \mathbf{F}^e \mathbf{v}_0^{(CD)} \\ \mathbf{n}^{(ZD)} &= J^e \mathbf{F}^{e-T} \mathbf{n}_0^{(ZD)},\end{aligned}\tag{1}$$

where \mathbf{F}^e is the elastic deformation gradient, defined from a multiplicative split of the deformation gradient and J^e is the determinant of \mathbf{F}^e .

The model is developed using a hyper-elasto plastic format in the spatial setting. An elastic free energy is proposed and the yield surface proposed in [2] and enhanced in [3] is used to model the in-plane properties. In this work, the yield surface has been modified to account for the out-of-plane plastic behavior as well. An expression for the plastic spin is determined and it is shown to be important to specify, due to the large anisotropic plastic strains that are present. The choice of plastic spin allows for a control of the direction in which permanent deformations will occur.

The developed continuum model is used to model the creasing and folding processes. In creasing, a male tool is pressed on the paperboard into the groove of a female tool, inducing permanent deformations on the paperboard. A well defined fold line emerges on the paperboard after

creasing, which acts as a hinge in the subsequent folding. The model has been implemented in a finite element framework. The simulated deformation pattern of a line fold is shown in Fig. 1, together with experimental measurements.

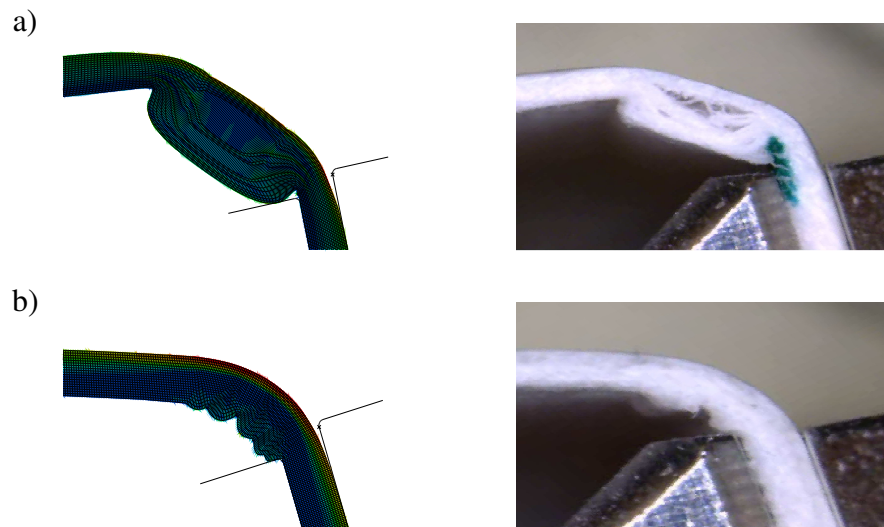


Figure 1: Simulated and measured deformation pattern of folding a paperboard. a) Paperboard creased prior to folding, b) Paperboard not creased prior to folding.

On the basis of Fig. 1, it can be concluded that the overall experimental deformation pattern is captured in the simulation. In the simulated folding of the creased paperboard, some elements are stretched several hundreds of percent, indicating a deformation similar to that of delamination. The results in Fig. 1 indicate the potential applications for the model, where local deformation phenomena such as wrinkling can be predicted.

Acknowledgement. The financial support from Tetra Pak, Stora Enso and Klabin is gratefully acknowledged.

References

- [1] Niclas Stenberg, On the Out-of-Plane Mechanical Behaviour of Paper Materials , PHD thesis *Royal Institute of Technology*, Stockholm, Sweden, 2002.
- [2] Qingxi S. Xia, Mechanics of inelastic deformation and delamination in paperboard, PHD thesis *Massachusetts Institute of Technology*, 2002.
- [3] Eric Borgqvist and Tommy Lindström and Johan Tryding and Mathias Wallin and Matti Ristinmaa, Distortional hardening plasticity model for paperboard, *International Journal of Solids and Structures*, Vol. 51, pages 2411-2423, 2014