

hello,  
3x me 4 u

**Three projects by Anna Persson (and friends)  
From 5 years at The Industrial Design Programme, LTH**

# P.S 05

**By Anna Persson, Fredrik Aidehag & Tina Andersson,  
Industrial Design Programme at LTH**

**Design Project I**

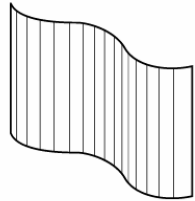
**Fall 2003**

**Theme: P.S Collection 05, recyclable materials**

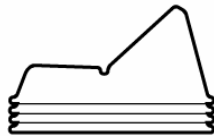
# 1 project; 3 concepts



plant factory



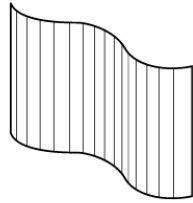
cd landscape



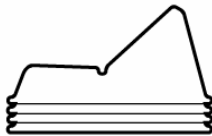
egg carton chair



plant factory

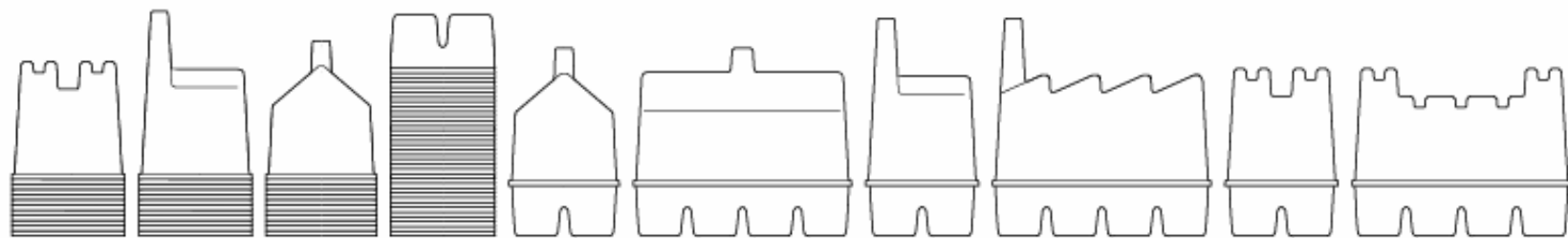


cd landscape



egg carton chair

## concept 1: plant factory



miniature greenhouse for inside use, 1 bottom, 3 alternative tops

material: PET



plant house



plant factory



plant castle

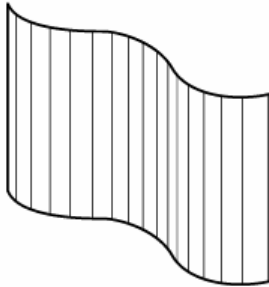








plant factory

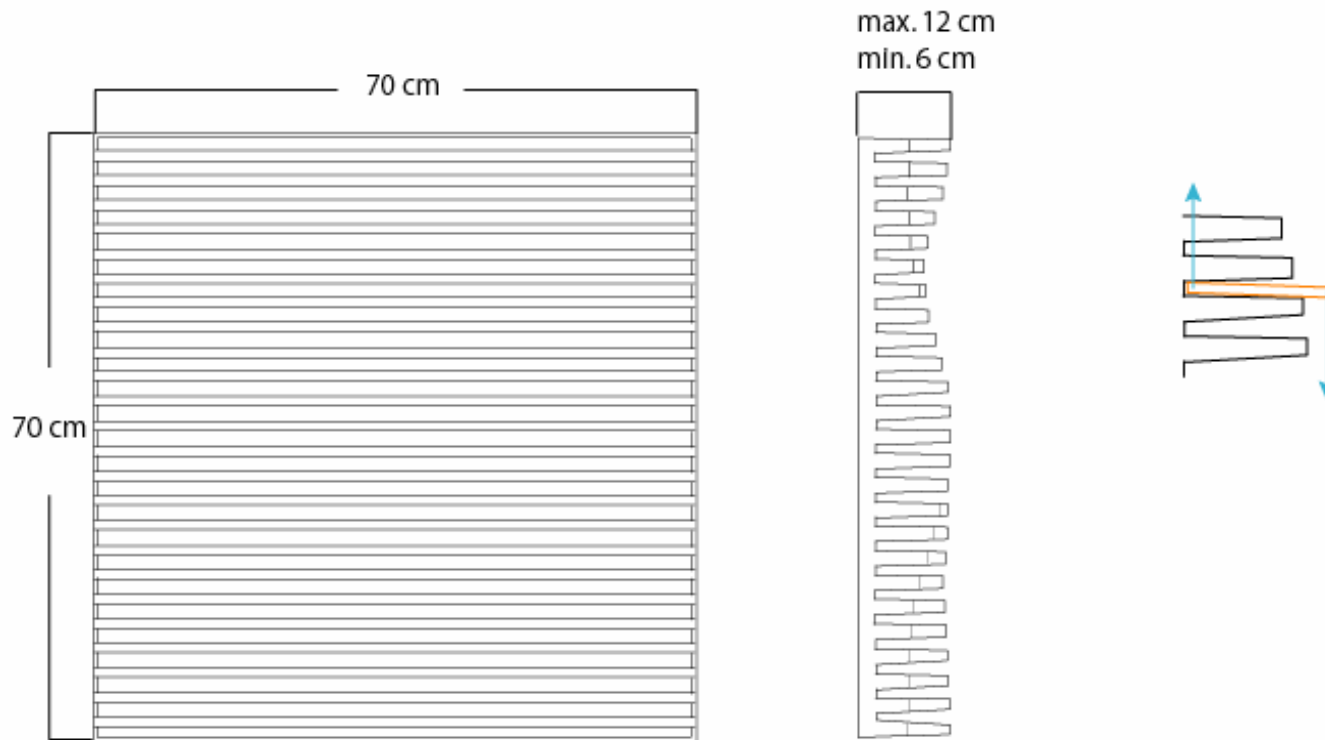


cd landscape



egg carton chair

# concept 2: cd landscape



sound absorbing cd storage, 120 cd's (5x24) per unit  
material: egg carton

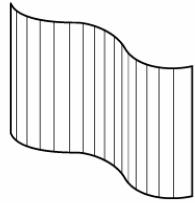




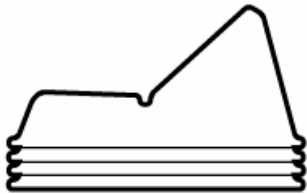




plant factory

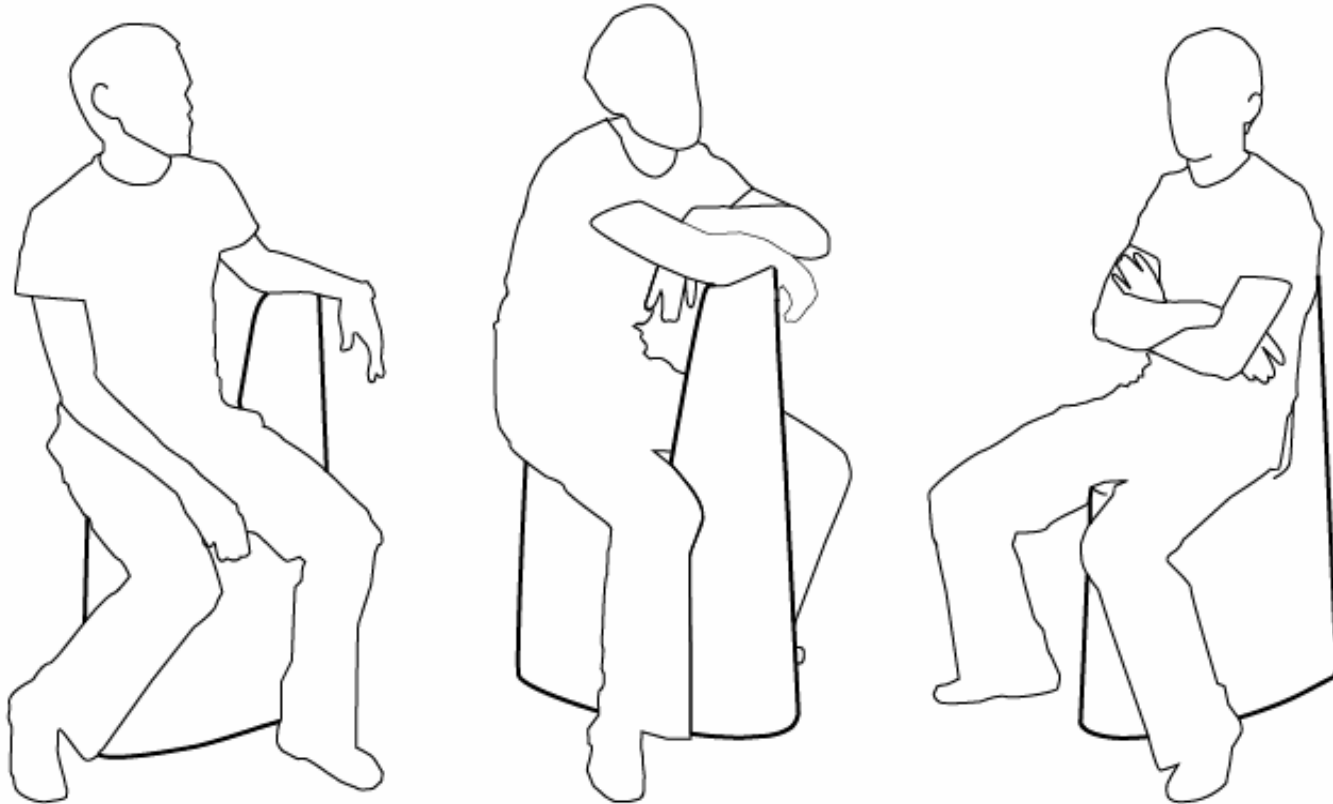


cd landscape



egg carton chair

concept 3: egg carton chair



slim chair for any occasion...

material: egg carton











# P.S collection 05

by Anna Persson, Fredrik Aïdehag and Tina Anndersson, fall 2003



*Beatrice  
and I*

**By Anna Persson,  
Industrial Design Programme at LTH**

**Design Project II  
Spring 2004  
Theme: Home Electronics**



*Beatrice:* an electric kettle

(&) I: the uninspired student...

Beatrice & I was a project about endless questioning. Why do we do what we do? why do all electric kettles have pastel colored buttons? WHY have I lost my inspiration and HOW do I get it back!? Beatrice is merely the physical result of a project that was all about the process...

Along side the primary brief (to design an electric kettle) I had a secondary brief that was to SAVE ANNA! Having had a rough spring on all fronts I was struggling with my personal relation to the design profession, I felt incapacitated to do anything remotely creative. Freaked by the idea of having lost my inspiration I embarked on the journey that resulted in Beatrice and a re-inspired Anna...

## *Scenario*



My idea was to make an electric kettle where you could use the pot for serving. Rather controversially I chose to use an already existing teapot, I knew what I wanted her to look like so I took a trip to the local flea market and voilà - Beatrice! Leaving me with designing the base unit.

*Inspiration for*



*The base*



*The cord*



*The button*



*Result*





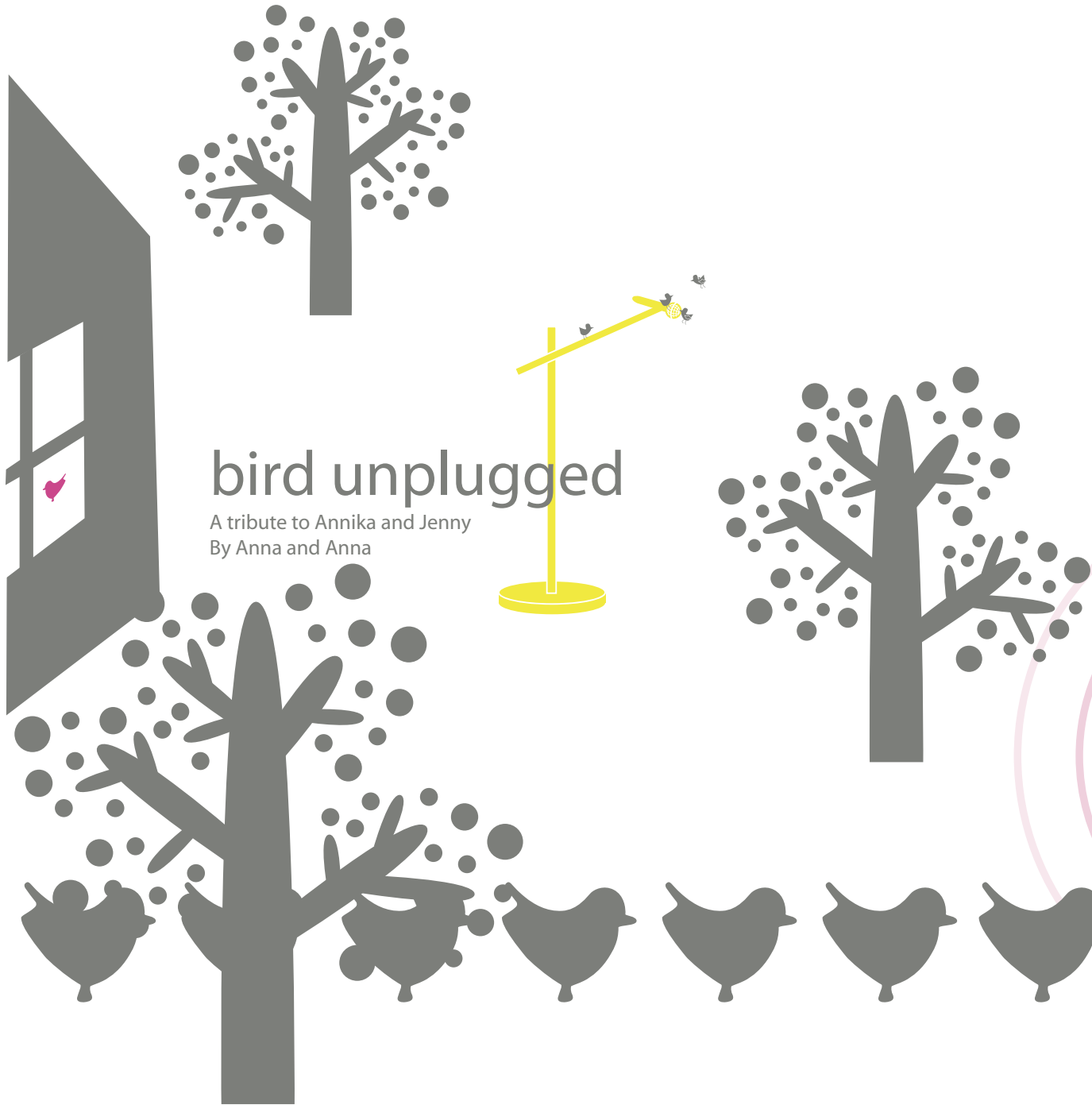
*You too could become this happy...*

# Bird unplugged

**By Anna Persson and Anna Åberg,  
Industrial Design Programme at LTH**

**5 day Workshop with Marco Mauro from Phillips Design, Eindhoven  
Fall 2005**

**Theme: birdhouse/birdfeeders**



# bird unplugged

A tribute to Annika and Jenny  
By Anna and Anna

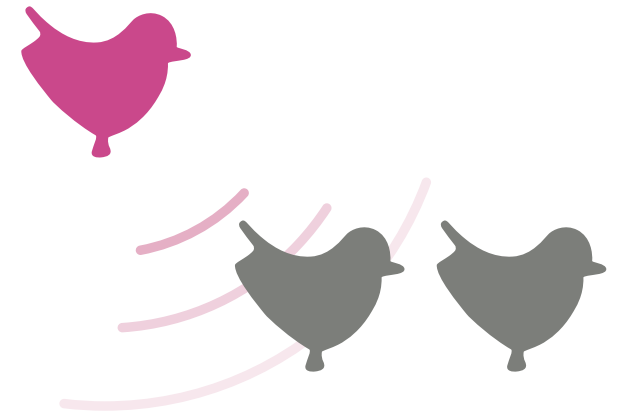
## Bringing live birdsong inside

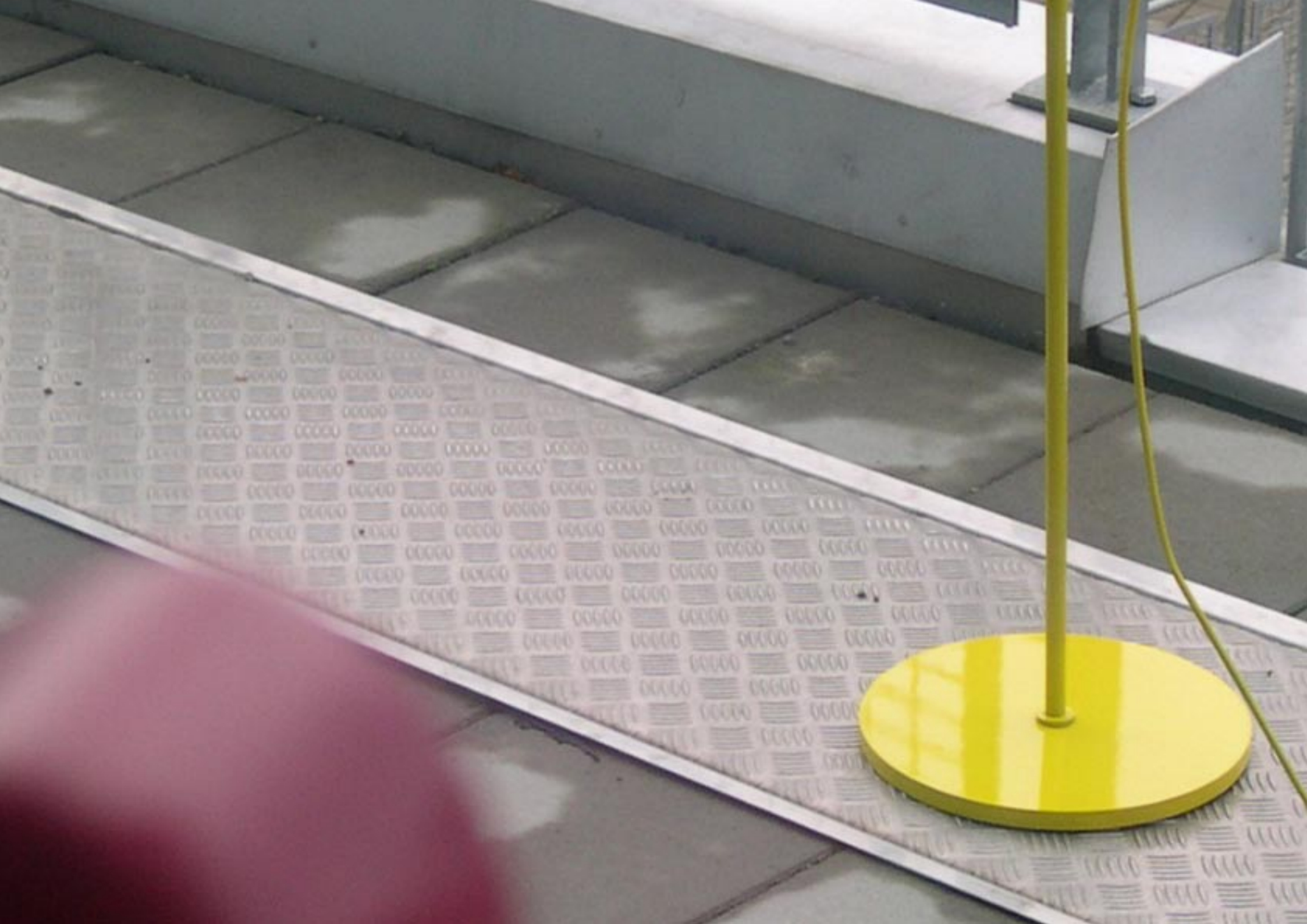
Bird Unplugged uses the microphone stand as a classic performance icon, though the microphone head in this case has been replaced by a tallow ball to attract the "singers".

The bird song is picked up by a small microphone, embedded within the structure and then directly transmitted to the soundbug inside.

## About Soundbug:

This British-designed innovation is about the size of a computer mouse and turns any hard surface into a speaker. Plug it into your music device, stick the bug (in this case the bird) to a door, window or desk, hit play and prepare to be amazed when your surface of choice starts singing back at you.

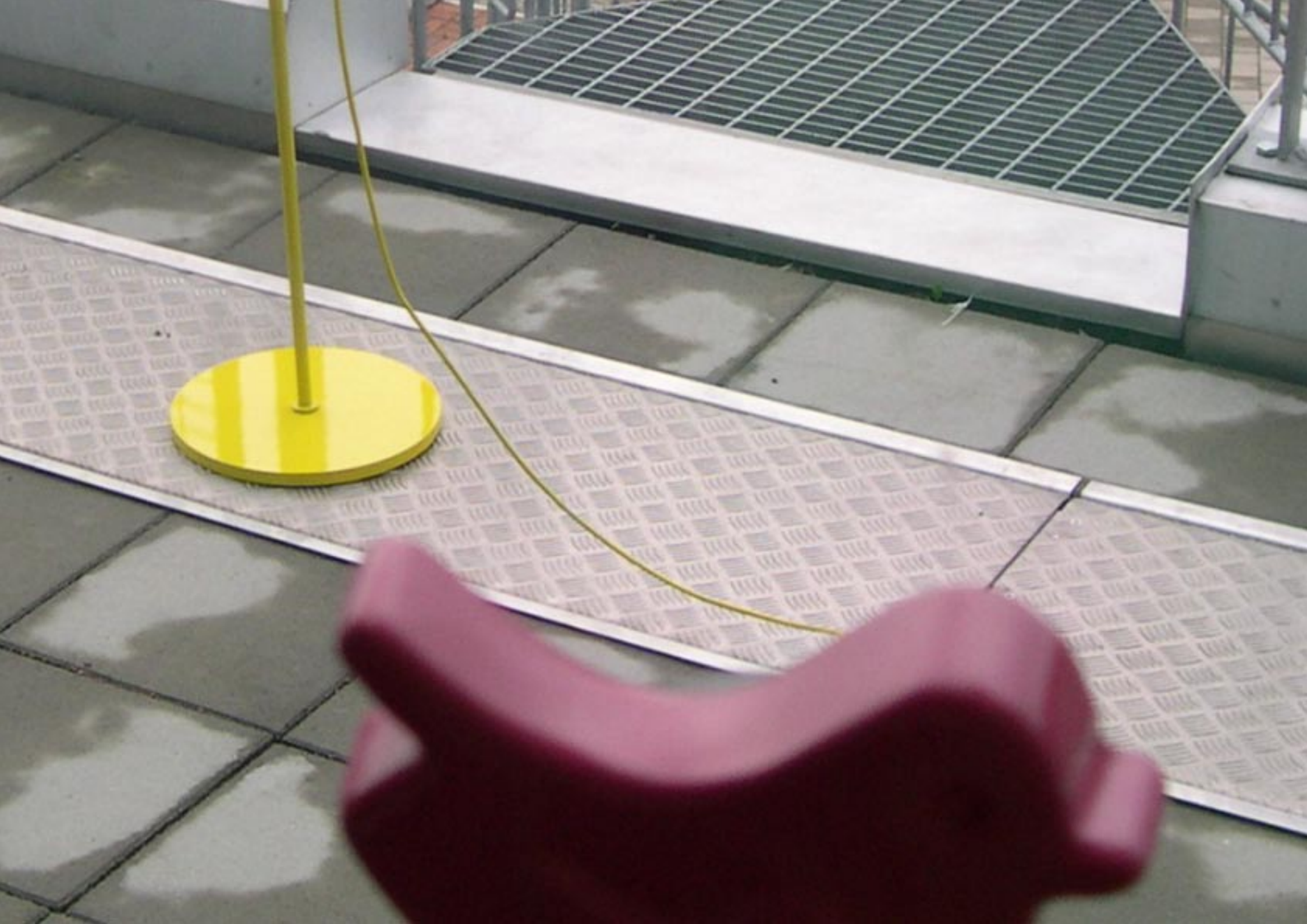


















ciao

& thanks

**/anna**