

Appendix 2 – Samtliga ANOVA-tablåer och grafer

ANOVA-tablåer

Kvalitetsvariabler

ANOVA^a

| Model | Sum of Squares | df | Mean Square | F | Sig. |
|--------------|----------------|----|-------------|------|-------------------|
| 1 Regression | 2,814 | 1 | 2,814 | ,177 | ,679 ^b |
| 1 Residual | 302,226 | 19 | 15,907 | | |
| Total | 305,040 | 20 | | | |

a. Dependent Variable: Generell kvalitet

b. Predictors: (Constant), Förvaltningsgrupp

Coefficients^a

| Model | Unstandardized Coefficients | | Standardized Coefficients | t | Sig. |
|--------------|-----------------------------|------------|---------------------------|-------|------|
| | B | Std. Error | Beta | | |
| 1 (Constant) | 10,210 | 2,069 | | 4,934 | ,000 |
| 1 NPMgrupp | ,503 | 1,195 | ,096 | ,421 | ,679 |

a. Dependent Variable: Generell kvalitet

ANOVA^a

| Model | Sum of Squares | df | Mean Square | F | Sig. |
|--------------|----------------|----|-------------|------|-------------------|
| 1 Regression | 1,179 | 1 | 1,179 | ,090 | ,767 ^b |
| 1 Residual | 248,633 | 19 | 13,086 | | |
| Total | 249,813 | 20 | | | |

a. Dependent Variable: Generell kvalitet med tidsvariabler

b. Predictors: (Constant), Förvaltningsgrupp

Coefficients^a

| Model | Unstandardized Coefficients | | Standardized Coefficients | t | Sig. |
|--------------|-----------------------------|------------|---------------------------|-------|------|
| | B | Std. Error | Beta | | |
| 1 (Constant) | 11,511 | 1,877 | | 6,133 | ,000 |
| 1 NPMgrupp | -,325 | 1,084 | -,069 | -,300 | ,767 |

a. Dependent Variable: Generell kvalitet med tidsvariabler

ANOVA^a

| Model | | Sum of Squares | df | Mean Square | F | Sig. |
|-------|------------|----------------|----|-------------|------|-------------------|
| 1 | Regression | 2,452 | 1 | 2,452 | ,138 | ,715 ^b |
| | Residual | 319,782 | 18 | 17,766 | | |
| | Total | 322,234 | 19 | | | |

a. Dependent Variable: Kvalitet neonatalvården

b. Predictors: (Constant), Förvaltningsgrupp

Coefficients^a

| Model | | Unstandardized Coefficients | | Standardized Coefficients | t | Sig. |
|-------|------------|-----------------------------|------------|---------------------------|-------|------|
| | | B | Std. Error | Beta | | |
| 1 | (Constant) | 9,421 | 2,258 | | 4,172 | ,001 |
| | NPMgrupp | ,476 | 1,283 | ,087 | ,372 | ,715 |

a. Dependent Variable: Kvalitet neonatalvården

ANOVA^a

| Model | | Sum of Squares | df | Mean Square | F | Sig. |
|-------|------------|----------------|----|-------------|------|-------------------|
| 1 | Regression | ,432 | 1 | ,432 | ,078 | ,783 ^b |
| | Residual | 104,845 | 19 | 5,518 | | |
| | Total | 105,277 | 20 | | | |

a. Dependent Variable: Kvalitet cancervården

b. Predictors: (Constant), Förvaltningsgrupp

Coefficients^a

| Model | | Unstandardized Coefficients | | Standardized Coefficients | t | Sig. |
|-------|------------|-----------------------------|------------|---------------------------|-------|------|
| | | B | Std. Error | Beta | | |
| 1 | (Constant) | 10,669 | 1,219 | | 8,753 | ,000 |
| | NPMgrupp | ,197 | ,704 | ,064 | ,280 | ,783 |

a. Dependent Variable: Kvalitet cancervården

ANOVA^a

| Model | | Sum of Squares | df | Mean Square | F | Sig. |
|-------|------------|----------------|----|-------------|------|-------------------|
| 1 | Regression | 6,484 | 1 | 6,484 | ,323 | ,576 ^b |
| | Residual | 381,266 | 19 | 20,067 | | |
| | Total | 387,750 | 20 | | | |

a. Dependent Variable: Kvalitet hjärtinfarkt- och strokevården

b. Predictors: (Constant), Förvaltningsgrupp

Coefficients^a

| Model | | Unstandardized Coefficients | | Standardized Coefficients | t | Sig. |
|-------|------------|-----------------------------|------------|---------------------------|-------|------|
| | | B | Std. Error | Beta | | |
| 1 | (Constant) | 9,801 | 2,324 | | 4,217 | ,000 |
| | NPMgrupp | ,763 | 1,342 | ,129 | ,568 | ,576 |

a. Dependent Variable: Kvalitet hjärtinfarkt- och strokevården

ANOVA^a

| Model | | Sum of Squares | df | Mean Square | F | Sig. |
|-------|------------|----------------|----|-------------|------|-------------------|
| 1 | Regression | 9,041 | 1 | 9,041 | ,467 | ,503 ^b |
| | Residual | 348,353 | 18 | 19,353 | | |
| | Total | 357,395 | 19 | | | |

a. Dependent Variable: Kvalitet intensivvårdsavdelningar

b. Predictors: (Constant), Förvaltningsgrupp

Coefficients^a

| Model | | Unstandardized Coefficients | | Standardized Coefficients | t | Sig. |
|-------|------------|-----------------------------|------------|---------------------------|-------|------|
| | | B | Std. Error | Beta | | |
| 1 | (Constant) | 8,808 | 2,283 | | 3,858 | ,001 |
| | NPMgrupp | ,909 | 1,329 | ,159 | ,684 | ,503 |

a. Dependent Variable: Kvalitet intensivvårdsavdelningar

Kostnadsvariabler

ANOVA^a

| Model | Sum of Squares | df | Mean Square | F | Sig. |
|--------------|----------------|----|-------------|-------|-------------------|
| 1 Regression | 2023838,628 | 1 | 2023838,628 | 3,721 | ,069 ^b |
| Residual | 10333594,071 | 19 | 543873,372 | | |
| Total | 12357432,699 | 20 | | | |

a. Dependent Variable: Strukturjusterad kostnad per invånare

b. Predictors: (Constant), Förvaltningsgrupp

Coefficients^a

| Model | Unstandardized Coefficients | | Standardized Coefficients | t | Sig. |
|--------------|-----------------------------|------------|---------------------------|--------|------|
| | B | Std. Error | Beta | | |
| 1 (Constant) | 21870,923 | 382,658 | | 57,155 | ,000 |
| NPMgrupp | -426,177 | 220,928 | -,405 | -1,929 | ,069 |

a. Dependent Variable: Strukturjusterad kostnad per invånare

ANOVA^a

| Model | Sum of Squares | df | Mean Square | F | Sig. |
|--------------|----------------|----|-------------|-------|-------------------|
| 1 Regression | 4501694,419 | 1 | 4501694,419 | 1,012 | ,327 ^b |
| Residual | 84539268,466 | 19 | 4449435,182 | | |
| Total | 89040962,885 | 20 | | | |

a. Dependent Variable: Kostnad per konsumerad DRG-poäng

b. Predictors: (Constant), Förvaltningsgrupp

Coefficients^a

| Model | Unstandardized Coefficients | | Standardized Coefficients | t | Sig. |
|--------------|-----------------------------|------------|---------------------------|--------|------|
| | B | Std. Error | Beta | | |
| 1 (Constant) | 46690,863 | 1094,498 | | 42,660 | ,000 |
| NPMgrupp | -635,609 | 631,908 | -,225 | -1,006 | ,327 |

a. Dependent Variable: Kostnad per konsumerad DRG-poäng

ANOVA^a

| Model | | Sum of Squares | df | Mean Square | F | Sig. |
|-------|------------|----------------|----|-------------|-------|-------------------|
| 1 | Regression | 41,674 | 1 | 41,674 | 3,007 | ,099 ^b |
| | Residual | 263,366 | 19 | 13,861 | | |
| | Total | 305,040 | 20 | | | |

a. Dependent Variable: Generell kvalitet

b. Predictors: (Constant), Strukturjusterad kostnad per invånare

Coefficients^a

| Model | | Unstandardized Coefficients | | Standardized Coefficients | t | Sig. |
|-------|-------------------------|-----------------------------|------------|---------------------------|--------|------|
| | | B | Std. Error | Beta | | |
| 1 | (Constant) | 49,934 | 22,469 | | 2,222 | ,039 |
| | Strukturjusteradkostnad | -,002 | ,001 | -,370 | -1,734 | ,099 |

a. Dependent Variable: Generell kvalitet

ANOVA^a

| Model | | Sum of Squares | df | Mean Square | F | Sig. |
|-------|------------|----------------|----|-------------|------|-------------------|
| 1 | Regression | 10,722 | 1 | 10,722 | ,852 | ,368 ^b |
| | Residual | 239,090 | 19 | 12,584 | | |
| | Total | 249,813 | 20 | | | |

a. Dependent Variable: Generell kvalitet med tidsvariabler

b. Predictors: (Constant), Strukturjusterad kostnad per invånare

Coefficients^a

| Model | | Unstandardized Coefficients | | Standardized Coefficients | t | Sig. |
|-------|-------------------------|-----------------------------|------------|---------------------------|-------|------|
| | | B | Std. Error | Beta | | |
| 1 | (Constant) | 30,749 | 21,408 | | 1,436 | ,167 |
| | Strukturjusteradkostnad | -,001 | ,001 | -,207 | -,923 | ,368 |

a. Dependent Variable: Generell kvalitet med tidsvariabler

ANOVA^a

| Model | Sum of Squares | df | Mean Square | F | Sig. |
|--------------|----------------|----|-------------|------|-------------------|
| 1 Regression | 14,346 | 1 | 14,346 | ,839 | ,372 ^b |
| Residual | 307,888 | 18 | 17,105 | | |
| Total | 322,234 | 19 | | | |

- a. Dependent Variable: Kvalitet neonatalvården
 b. Predictors: (Constant), Strukturjusterad kostnad per invånare

Coefficients^a

| Model | | Unstandardized Coefficients | | Standardized Coefficients | t | Sig. |
|-------|-------------------------|-----------------------------|------------|---------------------------|-------|------|
| | | B | Std. Error | Beta | | |
| 1 | (Constant) | 33,027 | 24,960 | | 1,323 | ,202 |
| | Strukturjusteradkostnad | -,001 | ,001 | -,211 | -,916 | ,372 |

- a. Dependent Variable: Kvalitet neonatalvården

ANOVA^a

| Model | Sum of Squares | df | Mean Square | F | Sig. |
|--------------|----------------|----|-------------|------|-------------------|
| 1 Regression | 5,122 | 1 | 5,122 | ,972 | ,337 ^b |
| Residual | 100,155 | 19 | 5,271 | | |
| Total | 105,277 | 20 | | | |

- a. Dependent Variable: Kvalitet cancervården
 b. Predictors: (Constant), Strukturjusterad kostnad per invånare

Coefficients^a

| Model | | Unstandardized Coefficients | | Standardized Coefficients | t | Sig. |
|-------|-------------------------|-----------------------------|------------|---------------------------|-------|------|
| | | B | Std. Error | Beta | | |
| 1 | (Constant) | -2,671 | 13,856 | | -,193 | ,849 |
| | Strukturjusteradkostnad | ,001 | ,001 | ,221 | ,986 | ,337 |

- a. Dependent Variable: Kvalitet cancervården

ANOVA^a

| Model | | Sum of Squares | df | Mean Square | F | Sig. |
|-------|------------|----------------|----|-------------|------|-------------------|
| 1 | Regression | ,042 | 1 | ,042 | ,002 | ,964 ^b |
| | Residual | 387,708 | 19 | 20,406 | | |
| | Total | 387,750 | 20 | | | |

- a. Dependent Variable: Kvalitet hjärtinfarkt- och strokevården
 b. Predictors: (Constant), Strukturjusterad kostnad per invånare

Coefficients^a

| Model | | Unstandardized Coefficients | | Standardized Coefficients | t | Sig. |
|-------|-------------------------|-----------------------------|------------|---------------------------|------|------|
| | | B | Std. Error | Beta | | |
| 1 | (Constant) | 9,763 | 27,262 | | ,358 | ,724 |
| | Strukturjusteradkostnad | 5,835E-005 | ,001 | ,010 | ,045 | ,964 |

- a. Dependent Variable: Kvalitet hjärtinfarkt- och strokevården

ANOVA^a

| Model | | Sum of Squares | df | Mean Square | F | Sig. |
|-------|------------|----------------|----|-------------|------|-------------------|
| 1 | Regression | 16,482 | 1 | 16,482 | ,870 | ,363 ^b |
| | Residual | 340,912 | 18 | 18,940 | | |
| | Total | 357,395 | 19 | | | |

- a. Dependent Variable: Kvalitet intensivvårdsavdelningarna
 b. Predictors: (Constant), Strukturjusterad kostnad per invånare

Coefficients^a

| Model | | Unstandardized Coefficients | | Standardized Coefficients | t | Sig. |
|-------|-------------------------|-----------------------------|------------|---------------------------|-------|------|
| | | B | Std. Error | Beta | | |
| 1 | (Constant) | 36,479 | 28,169 | | 1,295 | ,212 |
| | Strukturjusteradkostnad | -,001 | ,001 | -,215 | -,933 | ,363 |

- a. Dependent Variable: Kvalitet intensivvårdsavdelningarna

ANOVA^a

| Model | | Sum of Squares | df | Mean Square | F | Sig. |
|-------|------------|----------------|----|-------------|-------|-------------------|
| 1 | Regression | 24,145 | 1 | 24,145 | 1,633 | ,217 ^b |
| | Residual | 280,895 | 19 | 14,784 | | |
| | Total | 305,040 | 20 | | | |

a. Dependent Variable: Generell kvalitet

b. Predictors: (Constant), Kostnad per konsumerad DRG-poäng

Coefficients^a

| Model | | Unstandardized Coefficients | | Standardized Coefficients | t | Sig. |
|-------|-----------------------------|-----------------------------|------------|---------------------------|-------|------|
| | | B | Std. Error | Beta | | |
| 1 | (Constant) | -12,793 | 18,637 | | -,686 | ,501 |
| | KostnaderkonsumeradDRGpoäng | ,001 | ,000 | ,281 | 1,278 | ,217 |

a. Dependent Variable: Generell kvalitet

ANOVA^a

| Model | | Sum of Squares | df | Mean Square | F | Sig. |
|-------|------------|----------------|----|-------------|------|-------------------|
| 1 | Regression | 7,910 | 1 | 7,910 | ,621 | ,440 ^b |
| | Residual | 241,903 | 19 | 12,732 | | |
| | Total | 249,813 | 20 | | | |

a. Dependent Variable: Generell kvalitet med tidsvariabler

b. Predictors: (Constant), Kostnad per konsumerad DRG-poäng

Coefficients^a

| Model | | Unstandardized Coefficients | | Standardized Coefficients | t | Sig. |
|-------|-----------------------------|-----------------------------|------------|---------------------------|-------|------|
| | | B | Std. Error | Beta | | |
| 1 | (Constant) | -2,618 | 17,295 | | -,151 | ,881 |
| | KostnaderkonsumeradDRGpoäng | ,000 | ,000 | ,178 | ,788 | ,440 |

a. Dependent Variable: Generell kvalitet med tidsvariabler

ANOVA^a

| Model | Sum of Squares | df | Mean Square | F | Sig. |
|--------------|----------------|----|-------------|-------|-------------------|
| 1 Regression | 38,651 | 1 | 38,651 | 2,453 | ,135 ^b |
| Residual | 283,584 | 18 | 15,755 | | |
| Total | 322,234 | 19 | | | |

- a. Dependent Variable: Kvalitet neonatalvården
 b. Predictors: (Constant), Kostnad per konsumerad DRG-poäng

Coefficients^a

| Model | Unstandardized Coefficients | | Standardized Coefficients | t | Sig. |
|-----------------------------|-----------------------------|------------|---------------------------|--------|------|
| | B | Std. Error | Beta | | |
| 1 (Constant) | 40,741 | 19,529 | | 2,086 | ,051 |
| KostnaderkonsumeradDRGpoäng | -,001 | ,000 | -,346 | -1,566 | ,135 |

- a. Dependent Variable: Kvalitet neonatalvården

ANOVA^a

| Model | Sum of Squares | df | Mean Square | F | Sig. |
|--------------|----------------|----|-------------|------|-------------------|
| 1 Regression | ,227 | 1 | ,227 | ,041 | ,842 ^b |
| Residual | 105,050 | 19 | 5,529 | | |
| Total | 105,277 | 20 | | | |

- a. Dependent Variable: Kvalitet cancervården
 b. Predictors: (Constant), Kostnad per konsumerad DRG-poäng

Coefficients^a

| Model | Unstandardized Coefficients | | Standardized Coefficients | t | Sig. |
|-----------------------------|-----------------------------|------------|---------------------------|------|------|
| | B | Std. Error | Beta | | |
| 1 (Constant) | 8,672 | 11,397 | | ,761 | ,456 |
| KostnaderkonsumeradDRGpoäng | 5,047E-005 | ,000 | ,046 | ,203 | ,842 |

- a. Dependent Variable: Kvalitet cancervården

ANOVA^a

| Model | Sum of Squares | df | Mean Square | F | Sig. |
|--------------|----------------|----|-------------|-------|-------------------|
| 1 Regression | 39,094 | 1 | 39,094 | 2,130 | ,161 ^b |
| Residual | 348,656 | 19 | 18,350 | | |
| Total | 387,750 | 20 | | | |

- a. Dependent Variable: Kvalitet hjärtinfarkt- och strokevården
 b. Predictors: (Constant), Kostnad per konsumerad DRG-poäng

Coefficients^a

| Model | | Unstandardized Coefficients | | Standardized Coefficients | t | Sig. |
|-------|-----------------------------|-----------------------------|------------|---------------------------|-------|------|
| | | B | Std. Error | Beta | | |
| 1 | (Constant) | -19,276 | 20,764 | | -,928 | ,365 |
| | KostnaderkonsumeradDRGpoäng | ,001 | ,000 | ,318 | 1,460 | ,161 |

- a. Dependent Variable: Kvalitet hjärtinfarkt- och strokevården

ANOVA^a

| Model | Sum of Squares | df | Mean Square | F | Sig. |
|--------------|----------------|----|-------------|------|-------------------|
| 1 Regression | 6,524 | 1 | 6,524 | ,335 | ,570 ^b |
| Residual | 350,870 | 18 | 19,493 | | |
| Total | 357,395 | 19 | | | |

- a. Dependent Variable: Kvalitet intensivvårdsavdelningarna
 b. Predictors: (Constant), Kostnad per konsumerad DRG-poäng

Coefficients^a

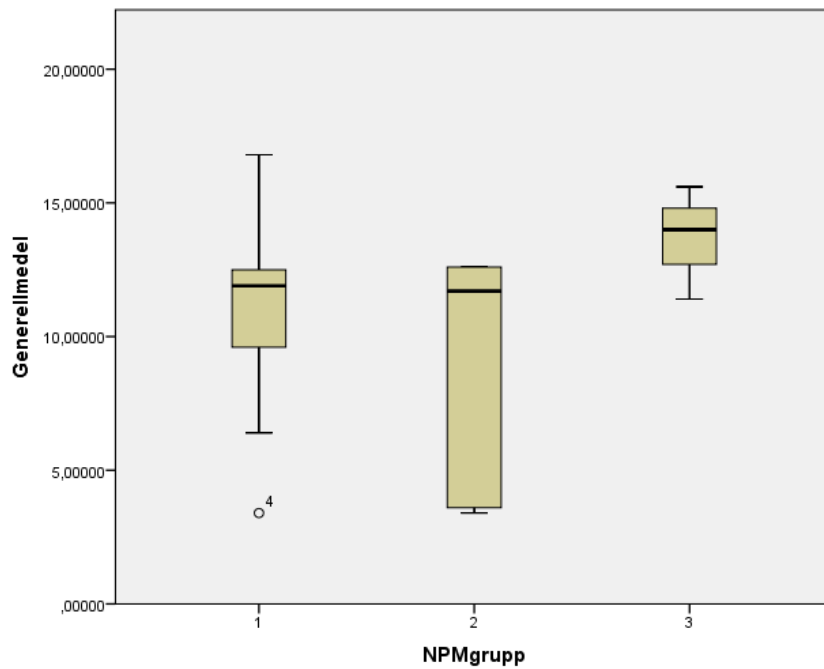
| Model | | Unstandardized Coefficients | | Standardized Coefficients | t | Sig. |
|-------|-----------------------------|-----------------------------|------------|---------------------------|-------|------|
| | | B | Std. Error | Beta | | |
| 1 | (Constant) | 22,877 | 21,905 | | 1,044 | ,310 |
| | KostnaderkonsumeradDRGpoäng | ,000 | ,000 | -,135 | -,579 | ,570 |

- a. Dependent Variable: Kvalitet intensivvårdsavdelningarna

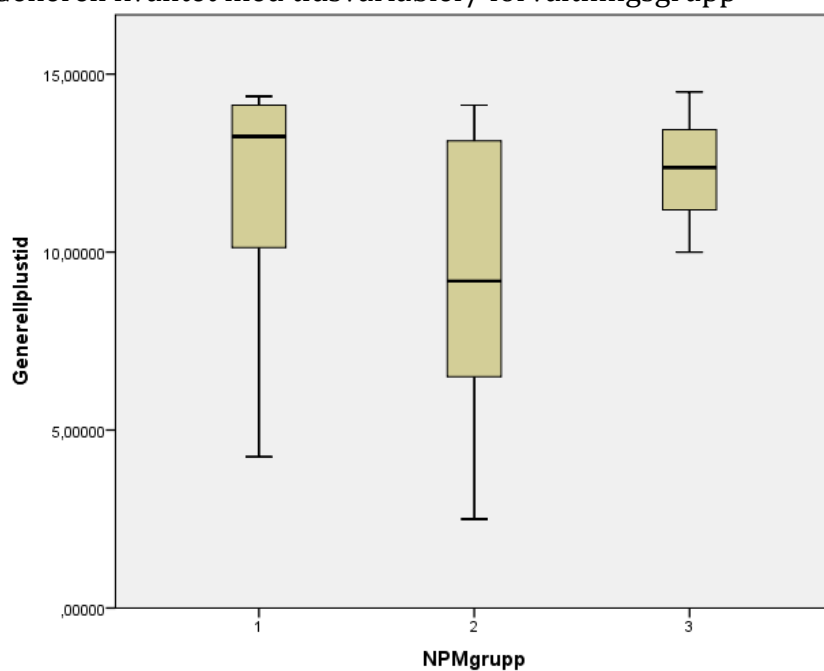
Diagram

Kvalitetsvariabler

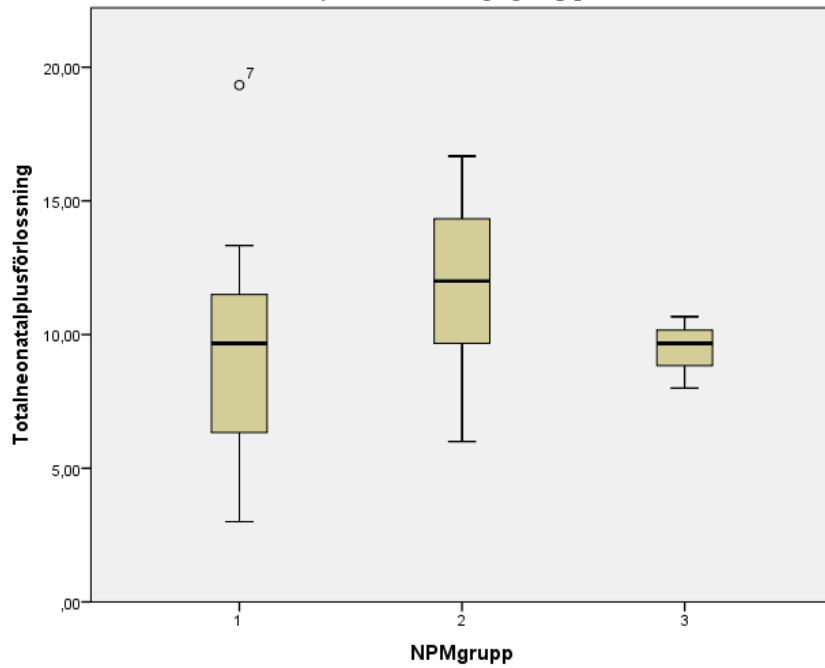
Generell kvalitet/ förvaltningsgrupp



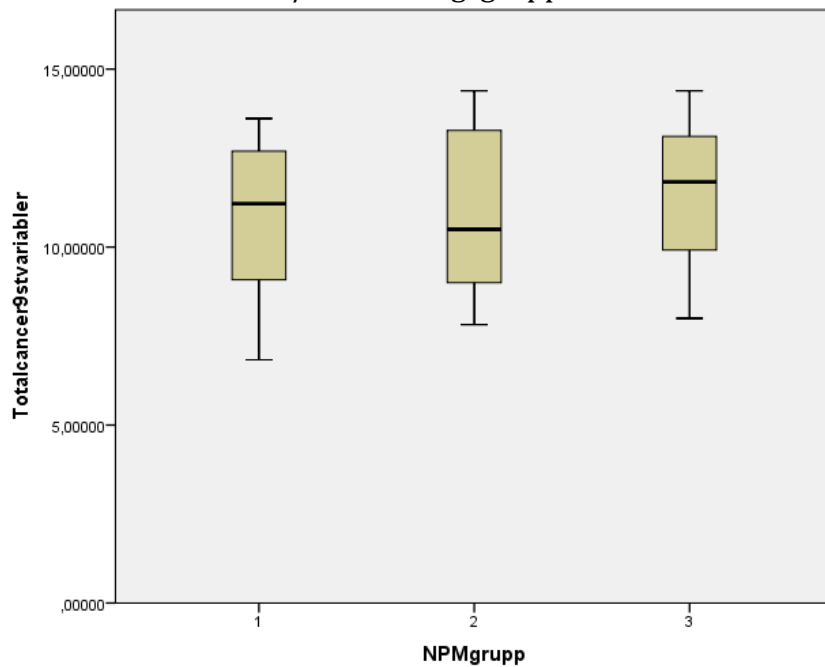
Generell kvalitet med tidsvariabler/ förvaltningsgrupp



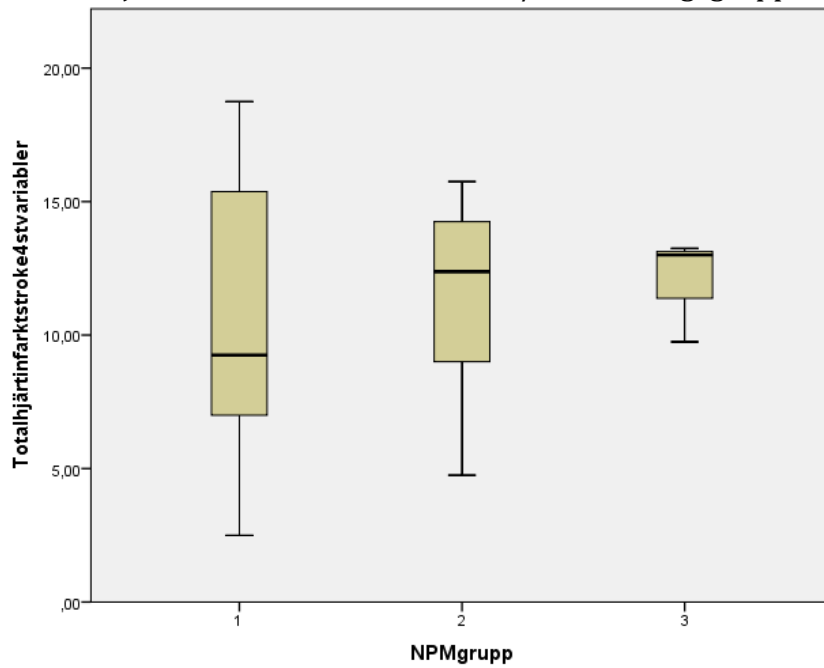
Kvalitet neonatalvården/ förvaltningsgrupp



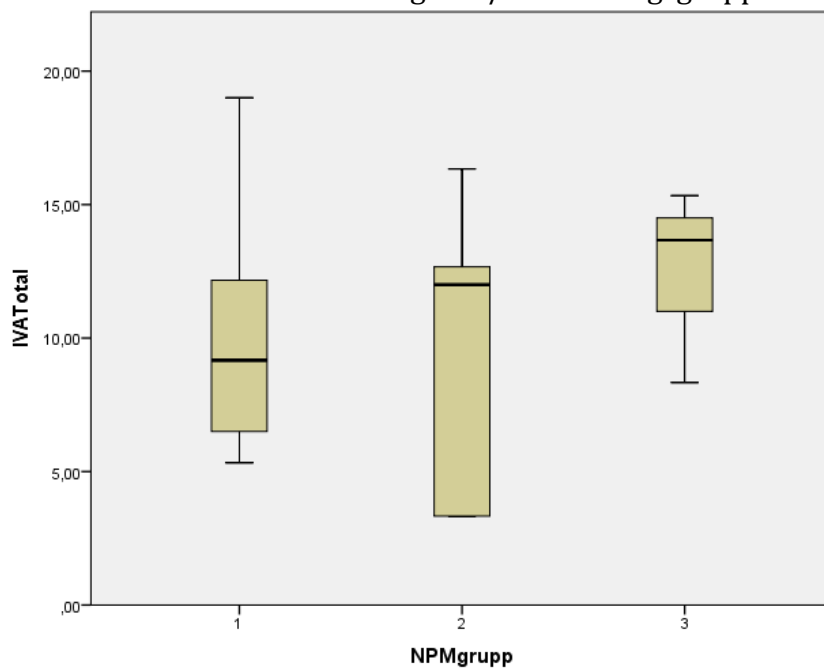
Kvalitet cancervården/ förvaltningsgrupp



Kvalitet hjärtinfarkt- och strokevården/ förvaltningsgrupp

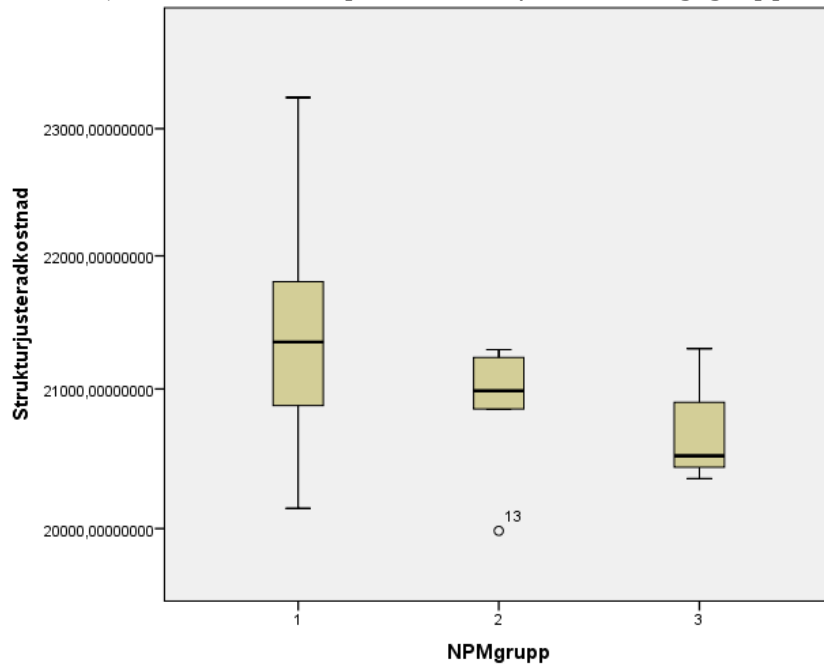


Kvalitet intensivvårdsavdelningarna/ förvaltningsgrupp

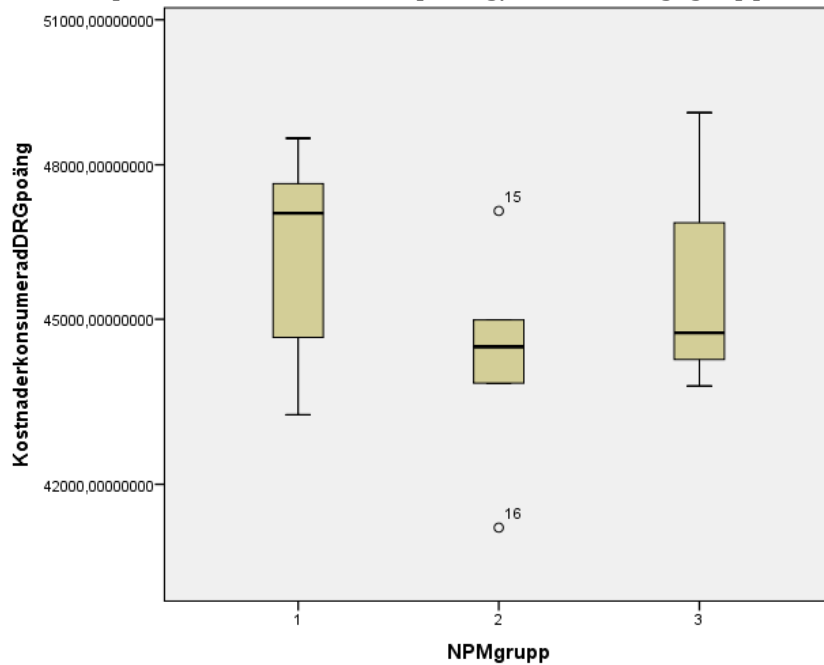


Kostnadsvariabler

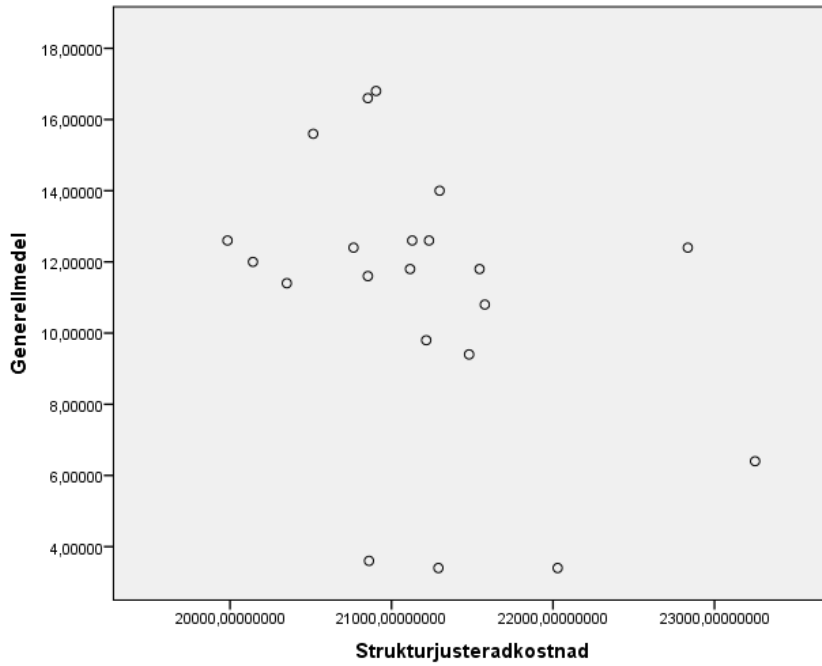
Strukturjusterad kostnad per invånare/ förvaltningsgrupp



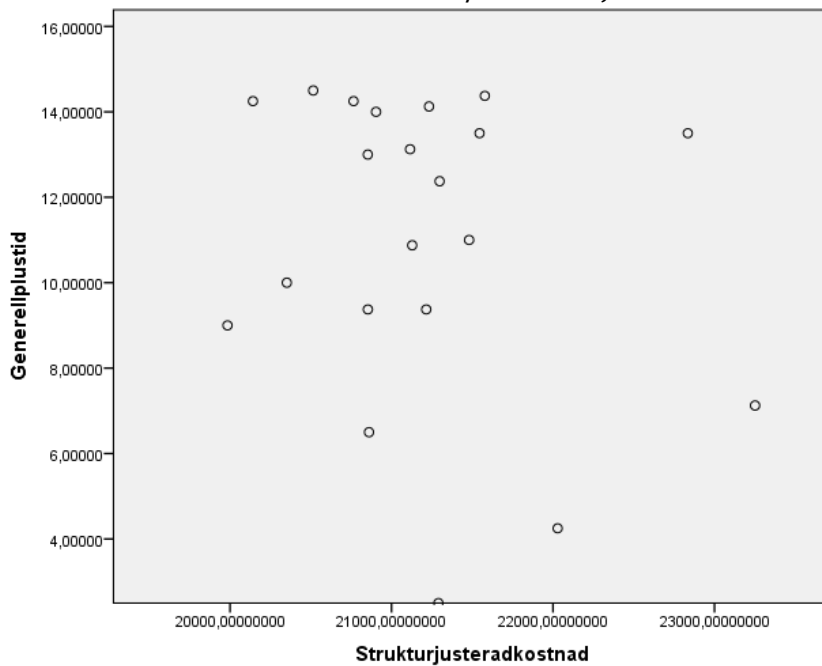
Kostnad per konsumerad DRG-poäng/ förvaltningsgrupp



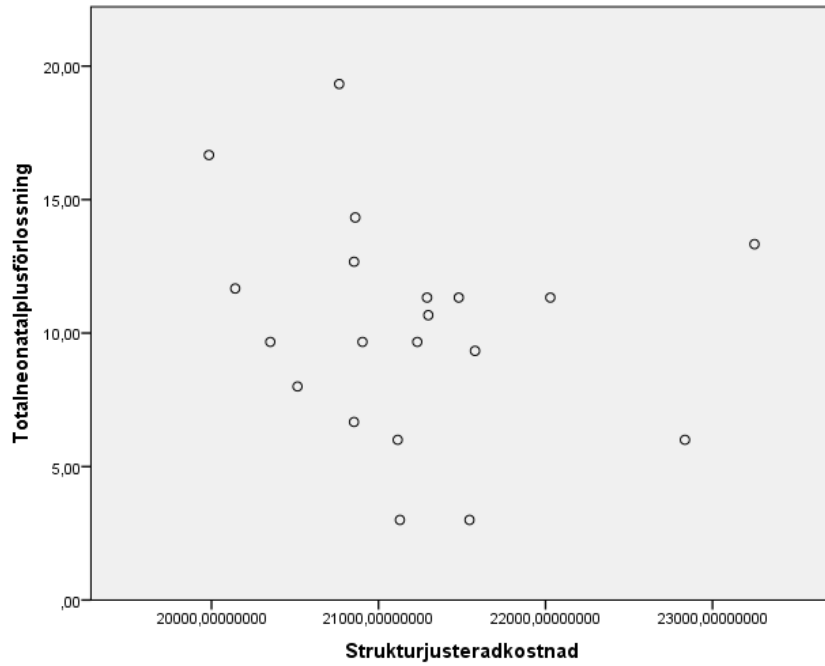
Generell kvalitet/ strukturjusterad kostnad per invånare



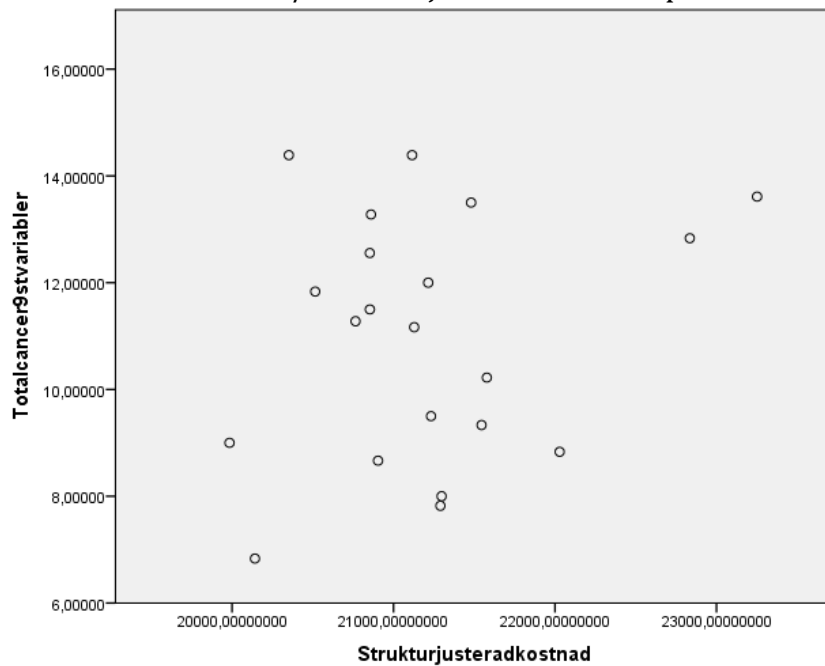
Generell kvalitet med tidsvariabler/ strukturjusterad kostnad per invånare



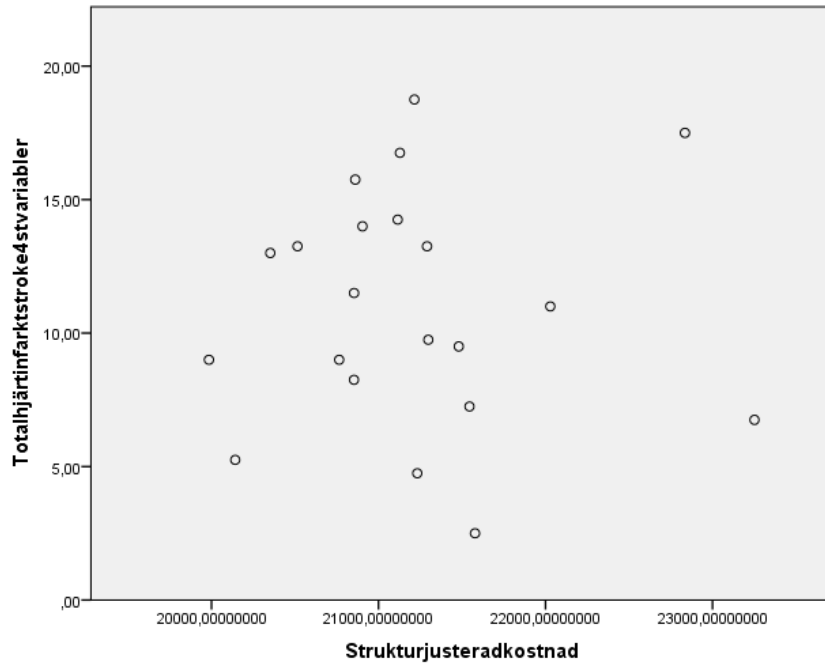
Kvalitet neonatalvården/ strukturjusterad kostnad per invånare



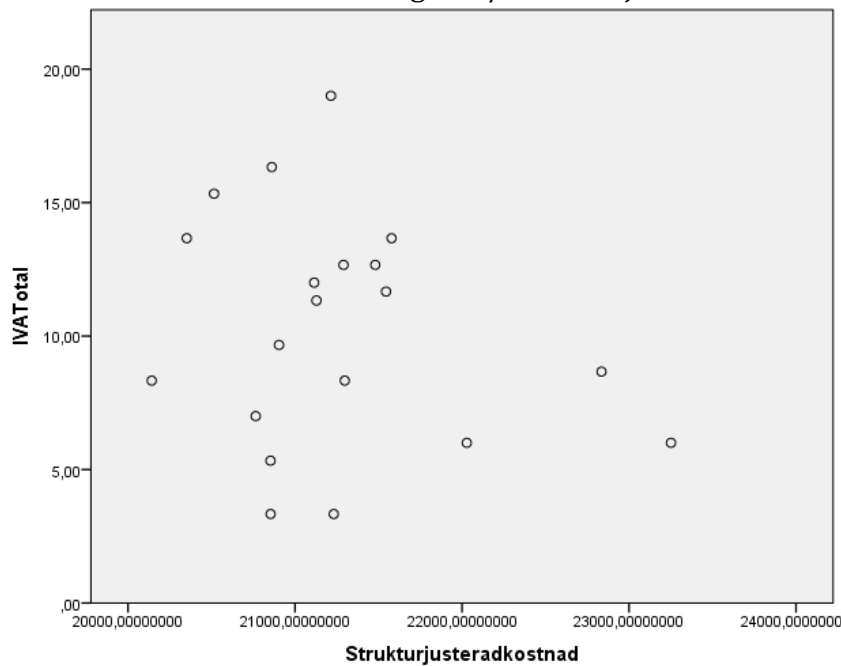
Kvalitet cancervården/ strukturjusterad kostnad per invånare



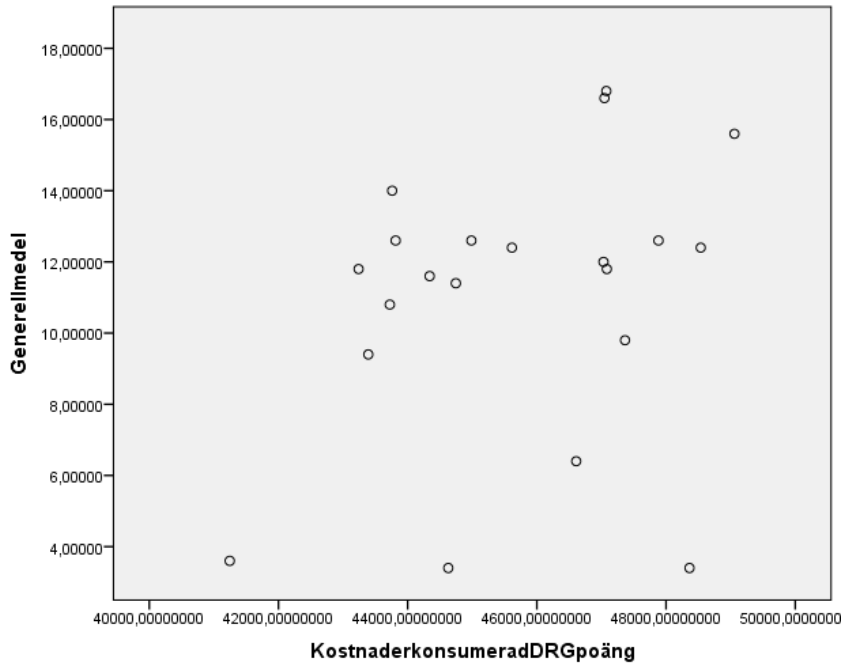
Kvalitet hjärtinfarkt- och strokevården/ strukturjusterad kostnad per invånare



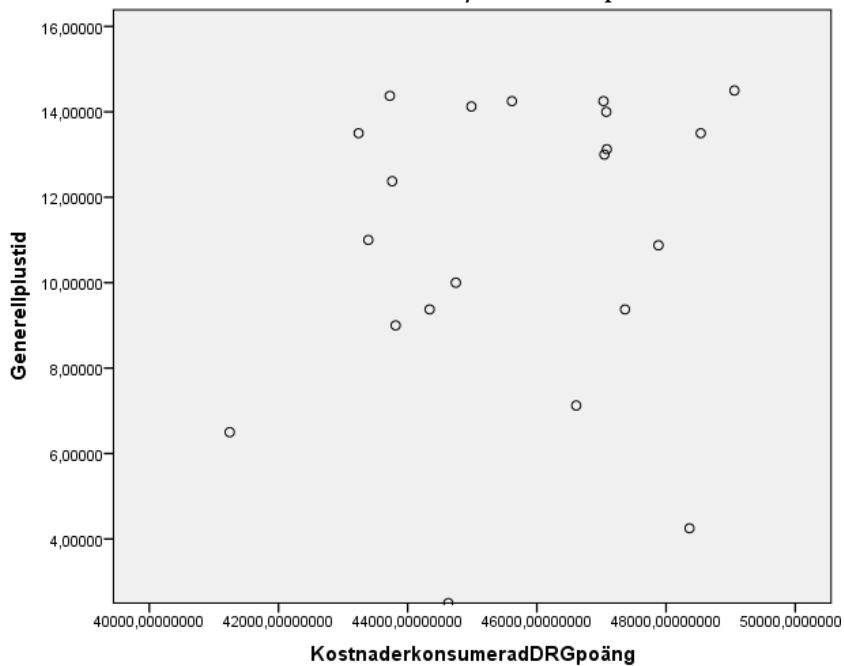
Kvalitet intensivvårdsavdelningarna/ strukturjusterad kostnad per invånare



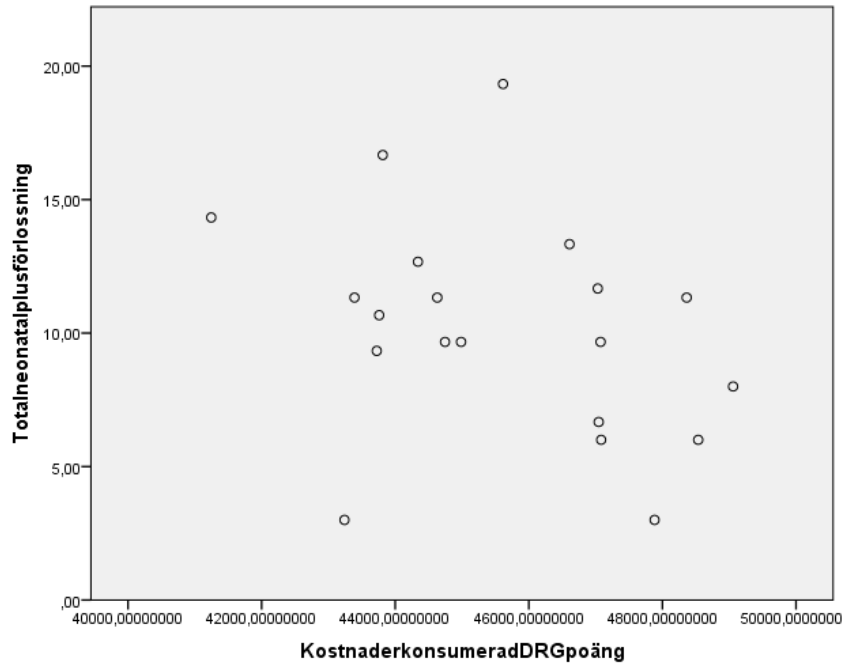
Generell kvalitet/ kostnad per konsumerad DRG-poäng



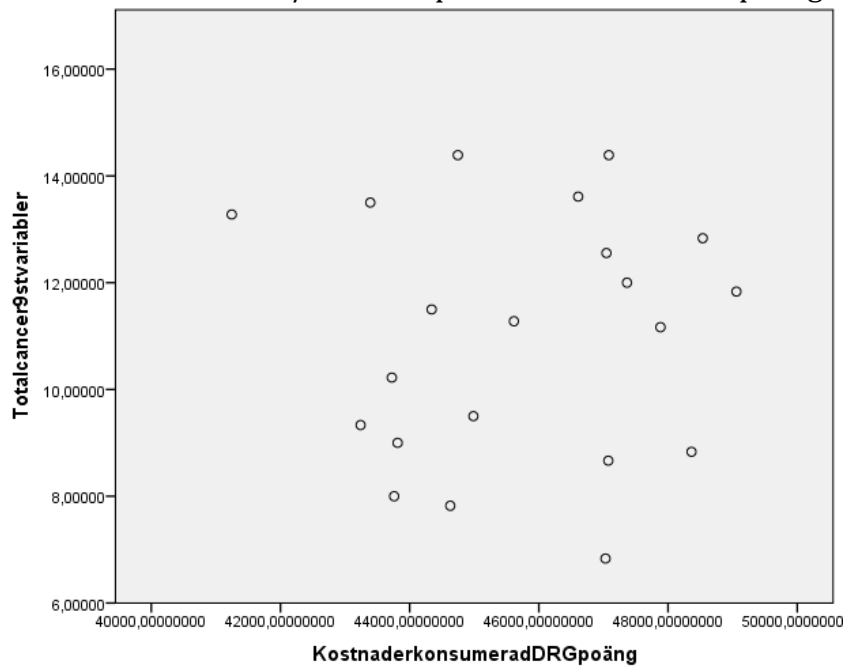
Generell kvalitet med tidsvariabler/ kostnad per konsumerad DRG-poäng



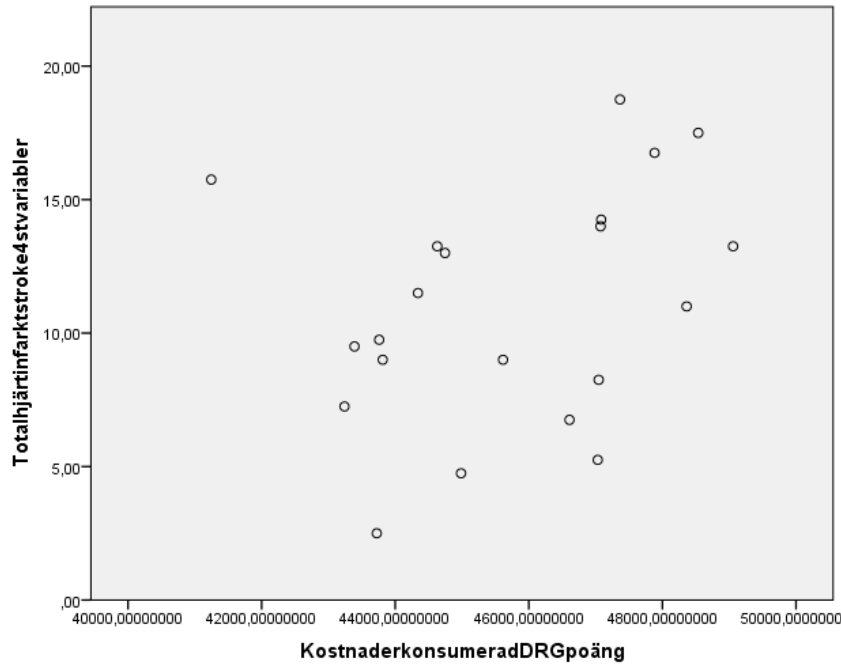
Kvalitet neonatalvården/ Kostnad per konsumerad DRG-poäng



Kvalitet cancervården/ Kostnad per konsumerad DRG-poäng



Kvalitet hjärtinfarkt- och strokevården/ Kostnad per konsumerad DRG-poäng



Kvalitet intensivvårdsavdelningarna/ Kostnad per konsumerad DRG-poäng

