



LUND UNIVERSITY

Neutrophils and autoantibodies in autoimmune rheumatic disease

Arve-Butler, Sabine

2021

Document Version:

Publisher's PDF, also known as Version of record

[Link to publication](#)

Citation for published version (APA):

Arve-Butler, S. (2021). *Neutrophils and autoantibodies in autoimmune rheumatic disease*. [Doctoral Thesis (compilation), Department of Clinical Sciences, Lund]. Lund University, Faculty of Medicine.

Total number of authors:

1

General rights

Unless other specific re-use rights are stated the following general rights apply:

Copyright and moral rights for the publications made accessible in the public portal are retained by the authors and/or other copyright owners and it is a condition of accessing publications that users recognise and abide by the legal requirements associated with these rights.

- Users may download and print one copy of any publication from the public portal for the purpose of private study or research.
- You may not further distribute the material or use it for any profit-making activity or commercial gain
- You may freely distribute the URL identifying the publication in the public portal

Read more about Creative commons licenses: <https://creativecommons.org/licenses/>

Take down policy

If you believe that this document breaches copyright please contact us providing details, and we will remove access to the work immediately and investigate your claim.

LUND UNIVERSITY

PO Box 117
221 00 Lund
+46 46-222 00 00

Neutrophils and autoantibodies in autoimmune rheumatic disease

SABINE ARVE-BUTLER

CLINICAL SCIENCES IN LUND | FACULTY OF MEDICINE | LUND UNIVERSITY





SABINE ARVE-BUTLER has a master's degree in biomedicine, obtained at Lund University (bachelor) and Uppsala University (master), Sweden. Her doctoral research has focused on understanding the underlying immunology of autoimmune rheumatic diseases, and her thesis investigates the role of neutrophils and autoantibodies in the two diseases juvenile idiopathic arthritis (JIA) and systemic lupus erythematosus (SLE).



**FACULTY OF
MEDICINE**

Department of Clinical Sciences in Lund

Lund University, Faculty of Medicine
Doctoral Dissertation Series 2021:148
ISBN 978-91-8021-155-0
ISSN 1652-8220



Neutrophils and autoantibodies in autoimmune rheumatic disease

Sabine Arve-Butler



LUND
UNIVERSITY

DOCTORAL DISSERTATION

by due permission of the Faculty of Medicine, Lund University, Sweden.
To be defended at 13:00, December 17th, 2021 in Segerfalksalen, BMC A10,
Sölvegatan 19, Lund.

Faculty opponent

Professor Helena Erlandsson Harris
Karolinska Institutet, Stockholm, Sweden

Organization LUND UNIVERSITY Faculty of Medicine Department of Clinical Sciences in Lund		Document name Doctoral dissertation
Author: Sabine Arve-Butler		Date of issue 2021-12-17
		Sponsoring organization
Title and subtitle Neutrophils and autoantibodies in autoimmune rheumatic disease		
<p>Abstract</p> <p>The immune system is not only defending us. In autoimmune rheumatic disease, it has shifted from protecting against to causing disease, and drives an unprovoked and misguided attack against our own cells and tissues. Today, autoimmune rheumatic diseases are incurable, but symptoms can be managed with therapies that regulate different aspects of the misdirected immune response. Therefore, detailed knowledge about the immunological alterations in autoimmune rheumatic disease is essential for understanding of how these conditions can be treated.</p> <p>This thesis aimed to increase the knowledge of the immunological mechanisms underlying autoimmune rheumatic disease, by investigating neutrophil function and autoantibody profiles. The diseases studied in this thesis are juvenile idiopathic arthritis (JIA), an inflammatory arthritis affecting children, and systemic lupus erythematosus (SLE), a rheumatic multi-organ disease primarily affecting women.</p> <p>Neutrophils are the most common immune cells of the body, primarily known as pro-inflammatory cells in the first line of defense against infections. Less known, but no less important, is that neutrophils also have anti-inflammatory and regulatory functions. The balance between pro- and anti-inflammatory neutrophil functions needs to be fine-tuned to maintain a healthy immune system. In this thesis I studied how neutrophil function is affected by the local environment in the blood or inflamed joint, and by a genetic variant mediating low production of reactive oxygen species.</p> <p>Autoantibodies are antibodies targeting molecules and structures present in the own body, hallmarks of autoimmune disease. The autoantibody repertoire is often associated with the disease progression, and autoantibody-testing can therefore be useful in clinical practice, for instance to help clinicians make the correct diagnosis or predict disease outcomes. In this thesis I studied autoantibody profiles in relation to neutrophil function and clinical outcomes.</p> <p>In the works of this thesis, we discovered that neutrophils in inflamed joints of children with JIA are altered in ways which skews the immunological balance towards a state that facilitates continued inflammation. These neutrophil alterations are therefore likely to propel local inflammation and arthritis in JIA. We also found that a genetically inherited impairment in production of reactive oxygen species by neutrophils was associated with an increased likelihood to have certain autoantibodies and a form of cardiovascular co-morbidity in SLE. Finally, we investigated proteins targeted by autoantibodies in JIA and identified several novel autoantibody-targets, some of which were associated with JIA-related eye disease.</p> <p>Taken together, the results of this thesis identified immunological alterations in both neutrophil function and autoantibody profiles of patients with JIA and SLE. The results highlight the importance of neutrophils as immunological brakes, necessary to prevent autoimmune reactions, and how autoantibody profiles can be strongly connected to different disease outcomes.</p>		
Key words Neutrophils, autoantibodies, autoimmunity, juvenile idiopathic arthritis, systemic lupus erythematosus		
Classification system and/or index terms (if any)		
Supplementary bibliographical information		Language English
ISSN and key title 1652-8220 Lund University, Faculty of Medicine Doctoral Dissertation Series 2021:148		ISBN 978-91-8021-155-0
Recipient's notes	Number of pages 78	Price
	Security classification	

I, the undersigned, being the copyright owner of the abstract of the above-mentioned dissertation, hereby grant to all reference sources permission to publish and disseminate the abstract of the above-mentioned dissertation.

Signature 

Date 2021-11-11

Neutrophils and autoantibodies in autoimmune rheumatic disease

Sabine Arve-Butler



LUND
UNIVERSITY

Coverphoto by Guillem Castro

Copyright pp 1-78 Sabine Arve-Butler

Paper 1 © The Authors

Paper 2 © The Authors

Paper 3 © The Authors

Paper 4 © The Authors

Lund University, Faculty of Medicine, Department of Clinical Sciences in Lund

ISBN 978-91-8021-155-0

ISSN 1652-8220

Printed in Sweden by Media-Tryck, Lund University
Lund 2021



Media-Tryck is a Nordic Swan Ecolabel
certified provider of printed material.
Read more about our environmental
work at www.mediatryck.lu.se

MADE IN SWEDEN 

*To understand the world at all,
sometimes you could only focus on a tiny bit of it,
look very hard at what was close at hand
and make it stand in for the whole*

Donna Tartt, *The Goldfinch*

Table of Contents

Populärvetenskaplig sammanfattning	8
Popular scientific summary	10
Aims	12
List of publications and manuscripts.....	13
Abbreviations.....	15
Introduction to the field	18
Brief introduction to the immune system	18
The innate immune system.....	18
Neutrophils	19
The adaptive immune system	23
Interplay between the innate and adaptive immune system	24
Autoimmunity	26
What is autoimmunity?.....	26
Autoantibodies.....	27
Autoimmunity vs autoinflammation.....	28
Autoimmune rheumatic diseases.....	29
Introduction to JIA	29
JIA immunopathogenesis	32
Introduction to SLE	34
SLE immunopathogenesis	35
Neutrophils in JIA and SLE	38
Neutrophils in JIA	38
Neutrophils in SLE.....	39
Autoantibodies in JIA and SLE.....	42
Autoantibodies in JIA.....	42
Autoantibodies in SLE	43
The present investigation	45
Study I. Synovial fluid neutrophils in oligoarticular juvenile idiopathic arthritis have an altered phenotype and impaired effector functions	46
Background and aim.....	46

Method.....	46
Key findings	46
Conclusions	47
Study II. Neutrophils lose the capacity to suppress T cell proliferation upon migration towards inflamed joints in juvenile idiopathic arthritis	47
Background and aim.....	47
Method.....	48
Key findings	48
Conclusions	49
Study III. NCF1-339 polymorphism is associated with altered formation of neutrophil extracellular traps, high serum interferon activity and antiphospholipid syndrome in systemic lupus erythematosus	49
Background and aim.....	49
Method.....	50
Key findings	50
Conclusions	51
Study IV. Identification of novel autoantigens in juvenile idiopathic arthritis	51
Background and aim.....	51
Method.....	52
Key findings	52
Conclusions	53
Discussion	54
Conclusion.....	57
Acknowledgements	58
References	60

Populärvetenskaplig sammanfattning

Immunförsvaret kan vara förrädisk. Vid autoimmun reumatisk sjukdom har det skiftat från att vara skyddande till att vara skadligt, med en oprovocerad och helt missriktad attack mot kroppens egna celler och vävnader. Idag kan vi inte bota autoimmuna reumatiska sjukdomar, men symptom kan lindras med läkemedel som påverkar olika aspekter av den felaktiga immunresponsen. En detaljerad kunskap om hur immunförsvaret fungerar, både vid sjukdom och hälsa, är därför viktigt om vi ska ha en chans att i framtiden kunna utveckla bättre behandlingsalternativ för autoimmuna reumatiska sjukdomar.

Denna avhandling syftar till att öka kunskapen om de underliggande immunologiska mekanismerna bakom autoimmun reumatisk sjukdom, med fokus på neutrofiler och autoantikroppar. Sjukdomarna som studerats i avhandlingen är juvenil idiopatisk artrit (JIA), en inflammatorisk artritsjukdom som drabbar barn, och systemisk lupus erythematosus (SLE), en multi-organsjukdom som primärt drabbar kvinnor.

Neutrofiler är kroppens vanligaste immunceller, främst kända för att vara pro-inflammatoriska celler i det akuta försvaret mot infektioner. Mindre känt, men definitivt inte mindre viktigt, är att neutrofiler också är anti-inflammatoriska och regulatoriska. Balansen mellan de pro- och anti-inflammatoriska funktionerna måste vara precis rätt för att bibehålla ett friskt immunförvar. I min avhandling har jag studerat hur neutrofilers funktion påverkas av miljön de befinner sig i, i blodet eller den inflammerade leden, och av en genetisk variant som minskar deras förmåga att producera reaktiva syreradikaler.

Autoantikroppar är antikroppar som binder till molekyler och strukturer som finns i den egna kroppen. Att ha autoantikroppar är karaktäristiskt för autoimmun sjukdom. Unika kombinationer av autoantikroppar är ofta associerade med hur sjukdomen fortgår, och kan därför fungera som kliniska markörer och användas för att underlätta att sätta rätt diagnos eller förutspå hur sjukdomen kommer utvecklas. I min avhandling har jag studerat hur autoantikropsprofiler är relaterade både till neutrofilfunktion och sjukdomsbilden i stort.

I avhandlingsprojekten såg vi att neutrofiler i inflammerade leder hos barn med JIA var förändrade på ett sätt som skiftar immunbalansen och skapar gynnsamma förutsättningar för fortsatt inflammation. De här förändringarna i neutrofilfunktion bidrar sannolikt till att driva lokal inflammation och artrit i JIA. Vi såg också att en genetiskt försämrad förmåga hos neutrofiler att bilda reaktiva syreradikaler var

associerat med en ökad sannolikhet att ha vissa autoantikroppar och ökad risk för en typ av kardiovaskulär samsjuklighet vid SLE. Slutligen studerade vi autoantigen, proteiner som binds av autoantikroppar och identifierade flera nya autoantigener i JIA, av vilka några var associerade med JIA-relaterad ögonsjukdom.

Sammantaget har avhandlingsprojekten identifierat flera olika immunologiska förändringar, gällande både neutrofiler och autoantikroppar, hos patienter med JIA och SLE. Resultaten visar på vikten av korrekt fungerande neutrofiler som kan agera som en immunologisk broms och förhindra autoimmuna reaktioner, och hur vissa autoantikroppar är starkt sammanlänkade med olika sjukdomsutfall.

Popular scientific summary

The immune system is not only defending us. In autoimmune rheumatic disease, it has shifted from protecting against to causing disease, and drives an unprovoked and misguided attack against our own cells and tissues. Today, autoimmune rheumatic diseases are incurable, but symptoms can be managed with therapies that regulate different aspects of the misdirected immune response. Therefore, detailed knowledge about the immunological alterations in autoimmune rheumatic disease is essential for understanding of how these conditions can be treated.

This thesis aimed to increase the knowledge of the immunological mechanisms underlying autoimmune rheumatic disease, by investigating neutrophil function and autoantibody profiles. The diseases studied in this thesis are juvenile idiopathic arthritis (JIA), an inflammatory arthritis affecting children, and systemic lupus erythematosus (SLE), a rheumatic multi-organ disease primarily affecting women.

Neutrophils are the most common immune cells of the body, primarily known as pro-inflammatory cells in the first line of defense against infections. Less known, but no less important, is that neutrophils also have anti-inflammatory and regulatory functions. The balance between pro- and anti-inflammatory neutrophil functions needs to be fine-tuned to maintain a healthy immune system. In this thesis I studied how neutrophil function is affected by the local environment in the blood or inflamed joint, and by a genetic variant mediating low production of reactive oxygen species.

Autoantibodies are antibodies targeting molecules and structures present in the own body, hallmarks of autoimmune disease. The autoantibody repertoire is often associated with the disease progression, and autoantibody-testing can therefore be useful in clinical practice, for instance to help clinicians make the correct diagnosis or predict disease outcomes. In this thesis I studied autoantibody profiles in relation to neutrophil function and clinical outcomes.

In the works of this thesis, we discovered that neutrophils in inflamed joints of children with JIA are altered in ways which skews the immunological balance towards a state that facilitates continued inflammation. These neutrophil alterations are therefore likely to propel local inflammation and arthritis in JIA. We also found that a genetically inherited impairment in production of reactive oxygen species by neutrophils was associated with an increased likelihood to have certain autoantibodies and a form of cardiovascular co-morbidity in SLE. Finally, we

investigated proteins targeted by autoantibodies in JIA and identified several novel autoantibody-targets, some of which were associated with JIA-related eye disease.

Taken together, the results of this thesis identified immunological alterations in both neutrophil function and autoantibody profiles of patients with JIA and SLE. The results highlight the importance of neutrophils as immunological brakes, necessary to prevent autoimmune reactions, and how autoantibody profiles can be strongly connected to different disease outcomes.

Aims

The studies presented in this thesis aim to increase the understanding of the underlying immunological alterations of autoimmune rheumatic disease, by describing the role of neutrophils and autoantibodies in juvenile idiopathic arthritis (JIA) and systemic lupus erythematosus (SLE).

The specific aims, addressed in the four studies of the present investigation, are:

- I. To characterize the phenotype and function of neutrophils in JIA, by analysis of neutrophils at the site of inflammation in the arthritic joints in comparison to neutrophils in the circulation.
- II. To investigate the capacity of, and mechanisms for, neutrophil-mediated suppression of T cells, and how this is affected by neutrophil migration and the local environment in inflamed joints in JIA.
- III. To investigate how the NCF1-339 polymorphism, that mediates impaired function of the NADPH oxidase II, affects neutrophil function, autoantibody profile, and clinical features in SLE.
- IV. To identify JIA autoantigens, evaluate their potential to distinguish between JIA patients and paediatric controls, and explore associations between autoantibodies and JIA-related uveitis.

List of publications and manuscripts

- I. **Arve-Butler, S.**, Schmidt, T., Mossberg, A., Berthold, E., Gullstrand, B., Bengtsson, A. A., Kahn, F., & Kahn, R. (2021). Synovial fluid neutrophils in oligoarticular juvenile idiopathic arthritis have an altered phenotype and impaired effector functions. *Arthritis research & therapy*, 23(1), 109.
- II. **Arve-Butler S**, Mossberg A, Schmidt T, Welinder C, Yan H, Berthold E, Król P & Kahn R. Neutrophils lose the capacity to suppress T cell proliferation upon migration to inflamed joints in juvenile idiopathic arthritis. *Manuscript. Under revision in Frontiers in Immunology*.
- III. Linge, P., **Arve, S.**, Olsson, L. M., Leonard, D., Sjöwall, C., Frodlund, M., Gunnarsson, I., Svenungsson, E., Tydén, H., Jönsen, A., Kahn, R., Johansson, Å., Rönnblom, L., Holmdahl, R., & Bengtsson, A. (2020). NCF1-339 polymorphism is associated with altered formation of neutrophil extracellular traps, high serum interferon activity and antiphospholipid syndrome in systemic lupus erythematosus. *Annals of the rheumatic diseases*, 79(2), 254–261.
- IV. **Arve-Butler S**, Kahn F, Mossberg A, Berthold E, Król P & Kahn R. Identification of novel autoantigens in juvenile idiopathic arthritis. *Manuscript*.

Publications, published during doctoral studies, not included in this thesis

- Schmidt, T., Berthold, E., **Arve-Butler, S.**, Gullstrand, B., Mossberg, A., Kahn, F., Bengtsson, A. A., Månsson, B., & Kahn, R. (2020). Children with oligoarticular juvenile idiopathic arthritis have skewed synovial monocyte polarization pattern with functional impairment—a distinct inflammatory pattern for oligoarticular juvenile arthritis. *Arthritis research & therapy*, 22(1), 186.
- Reid, S., Alexsson, A., Frodlund, M., Morris, D., Sandling, J. K., Bolin, K., Svenungsson, E., Jönsen, A., Bengtsson, C., Gunnarsson, I., Illescas Rodriguez, V., Bengtsson, A., **Arve, S.**, Rantapää-Dahlqvist, S., Eloranta, M. L., Syvänen, A. C., Sjöwall, C., Vyse, T. J., Rönnblom, L., & Leonard, D. (2020). High genetic risk score is associated with early disease onset, damage accrual and decreased survival in systemic lupus erythematosus. *Annals of the rheumatic diseases*, 79(3), 363–369.
- Wirestam, L., **Arve, S.**, Linge, P., & Bengtsson, A. A. (2019). Neutrophils - Important Communicators in Systemic Lupus Erythematosus and Antiphospholipid Syndrome. *Frontiers in immunology*, 10, 2734.

Abbreviations

ACPA – Anti-citrullinated protein antibody

ACR – American College of Rheumatology

ANA – Anti-nuclear antibodies

APC – Antigen presenting cell

APRIL – A proliferation-inducing ligand

APS – Antiphospholipid syndrome

ATP – Adenosine triphosphate

BAFF – B cell activating factor (also known as BLyS, B lymphocyte stimulator)

B2GP1 – β 2-glycoprotein 1

CD – Cluster of differentiation

CGD – Chronic granulomatous disease

CL – Cardiolipin

CTL – Cytolytic T lymphocyte

CYBA – Cytochrome b558 subunit α

CYBB – Cytochrome b558 subunit β

DAMP – Damage associated molecular pattern

Fc receptor – Receptor recognizing the antibody Fc-region (fragment crystallizable)

GAPDH – Glyceraldehyde 3-phosphate dehydrogenase

GTPase – Hydrolase converting guanosine triphosphate (GTP) to diphosphate (GDP)

HLA – Human leukocyte antigen (human version of MHC)

IC – Immune complex

IFN – Interferon

Ig – Immunoglobulin

IL- – Interleukin-
ILAR – International League of Associations for Rheumatology
JIA – Juvenile idiopathic arthritis
LC-MS – Liquid chromatography mass spectrometry
LE cell – Lupus erythematosus cell
LDG – Low density granulocyte
LDN – Low density neutrophil
MAVS – Mitochondrial antiviral-signaling protein
mtROS – Mitochondrial reactive oxygen species
NADPH – Nicotinamide adenine dinucleotide phosphate
NCF1 – Neutrophil cytosolic factor 1 (also known as p47phox)
NCF2 – Neutrophil cytosolic factor 2 (also known as p67phox)
NCF4 – Neutrophil cytosolic factor 4 (also known as p40phox)
NE – Neutrophil elastase
NETs – Neutrophil extracellular traps
NOX2 complex – NADPH oxidase II complex
MAPK – Mitogen activated protein kinase
MHC – Major histocompatibility complex
MPO – Myeloperoxidase
MØ – Macrophage
PAMP – Pathogen associated molecular pattern
PBMC – Peripheral blood mononuclear cells
-phox – Phagocyte oxidase protein
PKC – Protein kinase C
PMA – Phorbol-myristate-acetate
PRR – Pattern recognition receptor
RA – Rheumatoid arthritis
Rac - Ras-related C3 botulinum toxin substrate
RF – Rheumatoid factor

ROS – Reactive oxygen species

SLE – Systemic lupus erythematosus

SNP – Single nucleotide polymorphism

SSA – Sjögren's syndrome antigen A

SSB – Sjögren's syndrome antigen B

TLR – Toll like receptor

Th – Helper T cell

Treg – Regulatory T cell

Introduction to the field

Brief introduction to the immune system

The immune system is fascinating. It has the capacity to both protect from and cause disease, and there's a very fine line between. It is orchestrated by extensive cell communications, and all components of the immune response are connected in this intricate network of cell-cell interactions.

Neutrophils and autoantibodies represent two important aspects of the immunology behind autoimmune rheumatic diseases, from the innate and the adaptive branches of the immune system respectively.

The innate immune system

The innate immune system is the rapid first line of defence, and the evolutionary most conserved portion of the immune system (1,2). It consists of a multitude of cell types, proteins, and processes, as well as physical barriers provided by epithelial cells at mucosal tissues.

Among the immune cells, innate immunity is largely dependent on phagocytes (2), including the granulocytes neutrophils, eosinophils, and basophils, and the mononuclear monocytes, macrophages, and dendritic cells. Neutrophils are the most numerous of our immune cells and have a wide array of immune functions which will be described in detail in the following sections.

Mononuclear phagocytes are not only involved in phagocytosis but are also important communicators via their production of cytokines and their capacity to initiate adaptive immune responses by antigen presentation (2). Monocytes can differentiate into macrophages and certain types of dendritic cells, and there is a large heterogeneity in both phenotype and function of these cells depending on the local microenvironment where they arise (3).

The innate immune defence is aided by circulating proteins, including the complement system; a protein network of more than 30 proteins discovered in the 1980's to "complement" the immune cells in bacterial killing (4). The complement system is involved in multiple immunological functions, including opsonization for phagocytosis, generation of pro-inflammatory and chemotactic molecules, and

microbe or cell lysis (1,4). A functional complement system is crucial for efficient clearance of dead cell remnants and debris.

Sensing danger

The cells of the innate immune system recognize threats to the body by sensing danger signals via pattern recognition receptors (PRRs), such as the toll-like receptors (TLRs), which recognize molecular patterns associated with infections or tissue damage. PRRs are activated by proteins and molecular structures associated with pathogens (pathogen-associated molecular patterns (PAMPs)), or damage (damage-associated molecular patterns (DAMPs)). In contrast to PAMPs, which are molecular motifs found on microbes, DAMPs are molecules normally present in the body. Almost any protein or metabolite can become a danger signal if misplaced or present at abnormal levels (5,6). For example, DNA (both nuclear and mitochondrial), RNA, histones and ATP are recognized as DAMPs and provokes an immune response if not contained within a cell (5,6).

Trained immunity

Due to the relative short-lived nature of most innate immune cells and their “non-specific” means for sensing danger via molecular patterns, the innate immune system cannot form a long-lived and specific immunological memory in the way the adaptive immune system does. Yet, there is evidence of “innate immune memory” or “trained immunity”, obtained primarily via epigenetic alterations in the effector immune cells and sometimes also in their hematopoietic stem cell precursors (7). Trained immunity mediates enhanced responsiveness of innate immune cells when they reencounter pathogens, and evidence suggest that this phenomenon could also contribute to the chronic inflammation in autoimmune rheumatic disease (7,8).

Neutrophils

Approximately 60-70 % of all circulating immune cells are neutrophils (9), with a plethora of functions essential for maintaining health. Morphologically, neutrophils are recognized by their lobulated nucleus which facilitates rapid migration to sites of inflammation (10), and their high content of cytoplasmic granules loaded with antimicrobial peptides, enzymes, cytokines and receptors (11), which they can release in response to various stimuli.

Neutrophils are primarily known for their pro-inflammatory effects, and there are overwhelming amounts of evidence that neutrophils are major players in both acute (12–15) and chronic inflammatory conditions (16). It is less well-known, but not of less importance, that neutrophils also have immunoregulatory functions (17–19). Neutrophils thus have dual roles of both propelling and suppressing inflammation,

and the balance between these two functions is key to maintaining a healthy immune system.

In response to damage or infection, via recognition of DAMPs, PAMPs, or chemokines, neutrophils quickly migrate into the affected tissue (5,20–22). The chemotactic signals induce increased expression of adhesion molecules on both neutrophils and the endothelial cells of the blood vessels. Interactions between neutrophil adhesion molecules and endothelial receptors result in reduced speed of the circulating neutrophils, so that they start rolling along the endothelium, followed by firm adhesion and eventually transendothelial migration (20–22). During migration, the actin cytoskeleton actively reshapes the neutrophil so that it can move in an amoeboid fashion (22).

Neutrophils are generally considered to be short-lived, with a lifespan counted in hours (23), but this is challenged by observations that circulating neutrophils can live for several days (24). Furthermore, the neutrophil lifespan can be prolonged or shortened depending on its microenvironment in blood or tissue, ongoing inflammation, infection or presence of immunomodulatory molecules (25,26).

Neutrophil effector functions

The classical neutrophil effector functions are degranulation, phagocytosis, oxidative burst, and release of neutrophil extracellular traps (NETs) (15) (Figure 1), all of which are important in killing and clearing infectious agents.

The non-classical effects of neutrophils as regulators of the adaptive immune response will be described in the following sections.

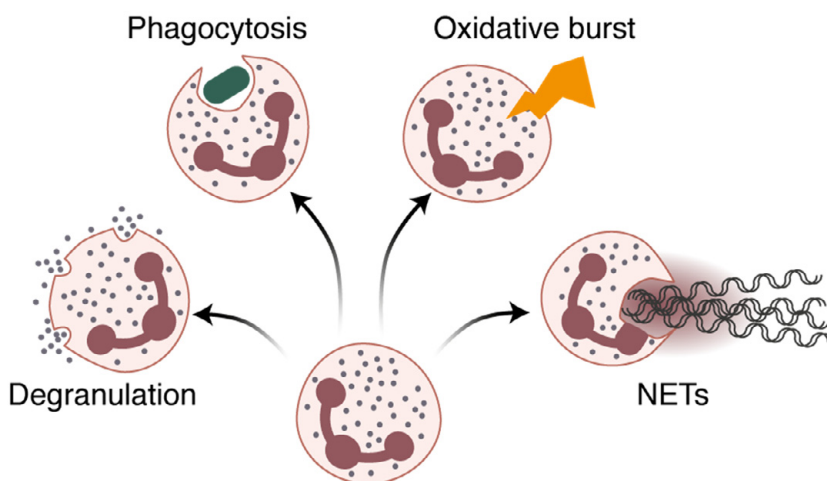


Figure 1. Schematic illustration of classical neutrophil effector functions.

Phagocytosis is the process of engulfment of extracellular particles into a phagosome, a plasma membrane-enclosed vacuole. Neutrophil phagocytosis is often initiated by antibodies or complement proteins on the particle surface, opsonizing (“flagging”) it for phagocytosis. The phagocytosed material is degraded within the cell by acidification and proteolytic enzymes of neutrophil granules (27).

Neutrophil granules are of three types: azurophil, specific and gelatinase. Azurophil granules contain high levels of myeloperoxidase (MPO), neutrophil elastase (NE), and acidic hydrolases, specific granules have a high content of antimicrobial proteins, and gelatinase granules contain extracellular matrix-degrading enzymes (14). Additionally, neutrophils have plenty of secretory vesicles, containing a reservoir of membrane proteins including adhesion molecules and receptors, such as PRRs (14). The secretory vesicles and gelatinase granules are the most readily released, the azurophil granules are not released as often but are important for the degradation of phagocytosed material as they can fuse with the phagosome (14,27).

Oxidative burst and the NADPH oxidase II complex

The release of large amounts of reactive oxygen species (ROS) during neutrophil oxidative burst is mediated by the NADPH oxidase II (NOX2) complex, placed in the cell membrane.

ROS produced by the NOX2 complex is crucial for an efficient defence against infections, evidenced by the frequent and severe infections affecting individuals with chronic granulomatous disease (CGD), a rare genetic syndrome of deficient NOX2 complex function. However, the importance of NOX2-derived ROS goes beyond protection of infections. Patients with CGD often suffer from hyperinflammation and are at high risk of developing autoimmune symptoms (28,29). This suggests that there is a close relationship between oxidative burst and protection from autoimmune reactions.

The NOX2 complex is a protein complex consisting of two membrane-bound and three cytosolic proteins (Figure 2). The membrane-bound enzyme is cytochrome b_{558} , or NOX2, with the two subunits α (CYBA) and β (CYBB). It is the β -subunit that has the enzymatic activity, generating ROS by electron transfer from NADPH to oxygen. The cytosolic proteins are neutrophil cytosolic factor 1 (NCF1), NCF2, NCF4, and a Rac GTPase (30).

The production of ROS by the NOX2 complex is strictly regulated. ROS production can only occur after neutrophil stimulation which leads to the phosphorylation and translocation of the cytosolic components to the membrane bound NOX2 (30,31). In absence of stimuli, NOX2 is inactive, and the membrane and cytosolic components are separated. The NCF proteins are phosphorylated by protein kinase C (PKC) and mitogen activated protein kinase (MAPK). Phosphorylated NCF1 and NCF4 have membrane-binding sites, and NCF1 and NCF2 bind to NOX2; NCF1 to CYBA, and NCF2 to CYBB (30,31).

Furthermore, in resting neutrophils only a fraction of the total NOX2 proteins are found in the plasma membrane, and most of NOX2 is found in membranes of specific- and gelatinase granules and secretory vesicles (11,30,32). The intracellularly stored NOX2 can be rapidly released to the plasma membrane in response to neutrophil activation or priming. Upon phagocytosis, intracellular ROS is produced into the phagosome, but intracellular ROS production by NOX2 can occur also in the absence of phagocytosis (32). Activation of the NOX2 complex in the plasma membrane or intracellular membranes is regulated via different signalling pathways (33), and the assembly of the NOX2 complex differs between intracellular and extracellular ROS production, where NCF4 is primarily necessary for phagosomal, but not extracellular, ROS production (34).

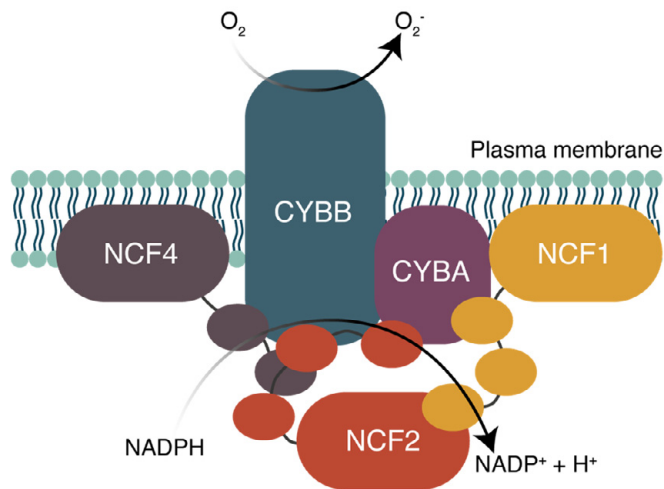


Figure 2. The ROS-producing NOX2 complex.

Neutrophil extracellular traps

NETs are web-like traps of chromatin decorated with granule proteins, extruded by activated neutrophils. They were first discovered in 2004 as an antimicrobial defence with capacity to capture and kill bacteria (35), and have later become recognized for their multiple roles in both health and multiple disease states. NETs can act as DAMPs and are thought to be important in the pathogenesis of many autoimmune rheumatic diseases (36,37), described in more detail in the following chapters.

As NETs contain nuclear material, the release of NETs is most often accompanied by neutrophil cell death (38), in a process called NETosis. During NETosis, the nuclear membrane is disrupted to allow fusion of nuclear and granular contents, followed by extracellular release of NETs as the neutrophil ruptures (38). However, NET release without cell death is also possible. In some cases, neutrophils can

survive for short periods as cytoplasts without a nucleus, and under other conditions certain stimuli can induce NETs made of mitochondrial rather than nuclear DNA, leaving the nucleus intact (39,40).

The most well-described pathway for NETosis is dependent on NOX2-derived ROS and the azurophil granule proteins MPO and NE (41,42). This pathway can be initiated by neutrophil activators including microbial components and chemical stimuli such as the PKC activator phorbol-myristate-acetate (PMA) (38,42). Other stimuli can induce NOX2-independent NET release, commonly dependent on histone citrullination by protein-arginine deiminase type 4 (PAD4) (43). NOX2-independent pathways driven by mitochondrial ROS and calcium influx have also been described (44).

The adaptive immune system

The other branch of the immune system is the adaptive immune system, which mediates long-lasting immunological memory and specific responses targeted to certain antigens. The following description of the cells and functions of the adaptive immune system is a brief overview of the most fundamental aspects of adaptive immunity.

The effector cells of the adaptive immunity are T- and B lymphocytes, mediating cellular and humoral immunity respectively (45). Each clone of T- and B cells recognize a specific antigen, as the T- and B cell receptors are tailored and selected in a process of somatic V(D)J recombination, creating a unique antigen-specific receptor for each cell (1,45).

T cells are classified based on their function and surface marker expression (1,45). Most T cells are CD4⁺ T helper (Th) cells, which produce cytokines to induce effector functions of other immune cells and activate B cells recognizing a matching antigen (45). CD8⁺ T cells are cytolytic T lymphocytes (CTLs), specialized in killing host cells harbouring intracellular pathogens(45). A subset of the CD4⁺ T cells are regulatory (Tregs), and have anti-inflammatory and suppressive functions which can inhibit the responses by effector Th cells and CTLs (46).

B cells mediate humoral immunity, and are classified by surface markers and developmental stages (45). Plasma cells, differentiated from activated B cells, are the specialized antibody-producing cells (1,47). Antibodies are antigen-recognizing immunoglobulins (Ig), with a main purpose of opsonization. In the classical antibody-mediated effects, the opsonizing antibody acts as a connector between a particle (such as a microbial component or dead cell remnant) and an Fc receptor-expressing immune cell (1,48). The opsonizing antibodies primarily target particles for phagocytosis, activation of the complement system, or antibody-dependent cytotoxicity (1).

Prior to encounter of an antigen which matches their receptors, T- and B cells are “naïve”. After antigen recognition they become activated, undergo clonal expansion, and may initiate immune responses. Activated T- and B cells can differentiate into memory T- and B cells (and plasma cells in the case of B cells), which survive for years after antigen encounter, making the proportion of naïve cells decrease and memory cells increase with age (1).

Interplay between the innate and adaptive immune system

As the innate immune system is phylogenetically older and evolved long before the adaptive immune system, the functions of the adaptive immune system are both supported by and dependent on the interaction with innate immune cells (2,49).

For instance, most antigens need to be presented to the adaptive immune cells by an antigen presenting cell (APC) to initiate an adaptive immune response. Monocytes, macrophages, and dendritic cells are professional APCs which present foreign (or self-) antigens to T cells. The T cell become activated if the antigen matches the T cell receptor and the T cell receives a co-stimulatory signal by the APC (50). In rare cases, neutrophils can also acquire antigen-presenting capacity in response to certain stimuli (51,52).

Immunomodulation by neutrophils

Neutrophils and their effector molecules shape the adaptive immune response via both activating and suppressive pathways (53–55). The neutrophil interaction with the adaptive immune system is mediated by direct effects on B- and T cells and via modulation of antigen presentation. Neutrophils have an especially important relationship with T cells, with the potential to strongly shape the immune response (55). A summary of neutrophil immunomodulating effects is presented in Table I.

Neutrophils exert their main immunosuppressive effects on T cells. Mechanisms for neutrophil-mediated T cell suppression include extracellular release of ROS and granular proteins, probably via an immunological synapse between the neutrophil and the T cell as this process is contact-dependent (55,56). Neutrophil can also suppress adaptive responses by other mechanisms, such as by inactivation cytokines and cytokine receptors, and capture of antigens to decrease antigen availability for APCs.

The mechanisms by which neutrophils potentiate adaptive responses include cytokine release, including B cell activating factor (BAFF) and a proliferation-inducing ligand (APRIL) (54,57). However, other neutrophil effects which potentiate adaptive responses are primarily occurring in different disease states. For instance, resting, circulating neutrophils do not express MHC class II, but neutrophils in certain inflammatory environments can (58,59), and antigenicity of

macromolecules and NETs are primarily important in autoimmune conditions (60–63).

In addition to these described mechanisms, neutrophils can affect adaptive responses via interaction with antigen presenting dendritic cells. However, this cell-cell crosstalk is not easily categorized as suppressive or activating, as neutrophils can mediate dendritic cell maturation and activation in ways which can both enhance and decrease their antigen presenting capacity (53).

Table I. Neutrophil immunomodulating mechanisms

Neutrophil mediator	Effect on adaptive immune cells	References
<i>Suppressive effects</i>		
ROS	Inhibition of T cells, Inhibition of IFN-signaling	(56,63–65)
MPO	Inhibition of T cells	(17,55)
Arginase-1	Inhibition of T cells	(56,66)
Serine proteases	Cleavage of cytokine receptors	(55)
NETs	Cleavage of pro-inflammatory cytokines	(67,68)
Antigen capture in lymph node	Decreased antigen presentation by APCs	(53)
<i>Activating effects</i>		
MHC II antigen presentation	Th cell activation	(51,69)
NETs	T cell activation, IFN signaling	(60–62)
Oxidation of macromolecules	Increased antigenicity	(63)
BAFF, APRIL	B cell activation, antibody production	(57)

Autoimmunity

What is autoimmunity?

Autoimmunity can roughly be defined as disease caused an inability of the immune system to discriminate between self and non-self (1). Typically, autoimmunity presents together with autoreactive T cells and/or autoantibodies. Autoimmune disease has many faces, and can be organ specific or systemic, depending on the target of the autoimmune reaction.

There is no precise definition of or criteria for what is considered autoimmunity. Attempts have been made to create defining criteria, such as that autoreactive T cells and/or autoantibodies should be present in the affected organ/tissue, and transfer of the autoreactive T cells or autoantibodies should induce disease in healthy individuals or animals (70). However, the usefulness of these criteria is debated, and several established autoimmune diseases fail to fulfil the criteria. For instance, animal models of disease transfer via transfer of autoantibodies or T cells is difficult to study, as human autoantibodies or autoreactive T cells might not recognize the animal homologue of the antigen (71). Therefore, autoimmunity is commonly defined more broadly as a disease caused by an autoreactive immune response towards self-antigens.

Autoimmunity is a consequence of failed immunological tolerance. The V(D)J recombination which creates clonally unique T- and B cell receptors has random elements, and some of the T- and B cells will inevitably get receptors recognizing self-antigens. Immune tolerance is the process of eliminating or neutralizing these autoreactive cells, and works by clonal deletion, induction of anergy (unresponsiveness to antigen), or receptor editing (72,73). Tolerance occurs both during lymphocyte development, prior to their release to the circulation (central tolerance), and in peripheral tissue (peripheral tolerance). Autoreactive cells escaping the central tolerance and can lead to autoimmune reactions if the peripheral tolerance fails (74). Regulatory T cells (Tregs), which have anti-inflammatory and suppressive functions, are of crucial importance in peripheral tolerance by inhibition of autoreactive effector T cells (46). There is no easy answer to why immune tolerance sometimes fails, but autoimmunity is generally believed to occur in genetically susceptible individuals exposed to environmental triggers (72,75).

Most autoimmune diseases have a strong female predominance (75,76). The immune system is different between men and women, where women tend to have greater ability to combat infection, enhanced antibody production, stronger Th1 responses, and better response to vaccinations, which, unfortunately, comes with the prize of an increased risk for developing autoimmune disease compared to men (77). Sex hormones affect the immune cells and are likely contributors to the gender bias in autoimmunity (75,77). Yet, sex hormones cannot explain why autoimmune

disease debuting pre-puberty is more prevalent in girls. Having two X chromosomes, which carries multiple immune related genes, is associated with increased risk of autoimmunity also in XX and XXY males, and an abnormal X chromosome inactivation has been observed in some autoimmune diseases (75,78,79).

The phenomenon of autoimmunity is common due to the large number of diseases it covers. A systematic review from 2012 lists 81 diseases as autoimmune, many of which are rheumatic, and estimates the overall prevalence of autoimmunity to 4.5 % of the population (80).

Autoantibodies

Autoantibodies are perhaps the most classic feature of autoimmunity and broken tolerance, often arising before full blown autoimmune disease develops (81).

Autoantibodies can be harmful and drive pathology via several mechanisms. Among other things, they can induce cell-lysis or tissue inflammation, they can induce or block cell signalling if targeting a receptor, and by forming immune complexes (IC) with their antigens they can activate a wide range of immune cell effector functions (Figure 3) (82,83).

In addition to increasing our understanding of the disease pathogenesis, many autoantibodies can be used as biomarkers in the clinical care of autoimmune disease. Biomarkers are biological and measurable features of disease which can be diagnostic (found in disease but not healthy individuals), prognostic (associated with clinical outcomes), or monitoring (associated with disease activity) (84).

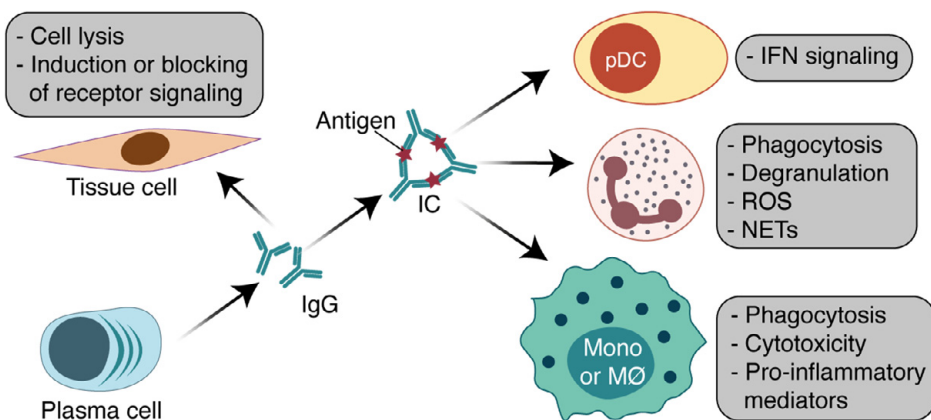


Figure 3. Autoantibody-mediated pathological effects. Antibodies targeting host cells can induce lysis, tissue inflammation or altered receptor signaling. ICs can activate immune cells and cause phagocytosis or inflammatory responses. Mono – monocyte, MØ – macrophage.

Autoimmunity vs autoinflammation

Some inflammatory diseases are caused by unprovoked inflammation in the absence of autoreactive T cells or autoantibodies; these conditions are therefore not considered autoimmune. The term “autoinflammatory” was first used in the late ‘90s to describe inflammatory diseases such as hereditary fever syndromes, characterized by an overactivated innate immune response (85). As the innate immune cells do not recognize specific antigens but are activated by pattern recognition, autoinflammation is not caused by an inability to discriminate self from non-self, but as a response to various kinds of DAMPs and/or genetic defects in danger-sensing or inflammatory signalling pathways (5,86). The pathogenesis of autoinflammatory diseases is typically driven by IL-1 β , but other cytokines including IL-6, TNF α and type I interferon (IFN) are important drivers of certain autoinflammatory diseases (87–90). Neutrophils, monocytes, and macrophages often play a notable role in autoinflammatory disease progression (86,87). In contrast to autoimmunity, which is much more prevalent in women, there is no gender bias in truly autoinflammatory diseases (87,91), indicating how these diseases are driven by different facets of the immune system.

Today we know that the underlying immunological features of both autoimmune and autoinflammatory conditions overlap. Autoimmunity and autoinflammation are not separate concepts but part of the same spectrum where many diseases have features of both autoimmunity and autoinflammation (91–93,87) (Figure 4).

It is a common misunderstanding that autoimmunity is driven by the adaptive immune system and autoinflammation by the innate. Even though the adaptive immune system is primarily engaged in autoimmunity, the innate immune system is important throughout the whole spectrum as it can shape the adaptive immune responses (49,53). Presence of autoantibodies and autoreactive T cells in autoimmune pathology does not at all mean that the innate immune system cannot be defective as well.

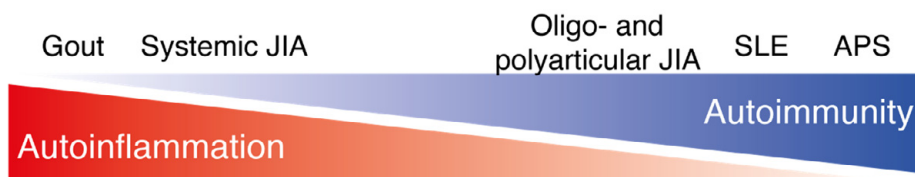


Figure 4. The spectrum of autoimmunity and autoinflammation.

Autoimmune rheumatic diseases

Most rheumatic diseases can be placed somewhere along the spectrum of autoimmune and autoinflammatory diseases (87,93). It is generally considered that rheumatoid arthritis (RA), systemic sclerosis and Sjögren's syndrome are autoimmune, while gout, systemic JIA, and monogenic fever syndromes are autoinflammatory (87). Ankylosing spondylitis and psoriatic arthritis are typically considered mixed-pattern diseases with features of both autoimmunity and autoinflammation (87,94).

The studies in this thesis investigate immunological aspects of patients with oligoarticular juvenile idiopathic arthritis (JIA) and systemic lupus erythematosus (SLE), as well as SLE patients with secondary antiphospholipid syndrome (APS). All these conditions are found in the mixed- to autoimmune end of the spectrum (87,93) (Figure 4).

SLE is often used as an example of a prototypical autoimmune disease, as it has an immunopathogenesis largely driven by autoantibodies towards self-antigens (87,95). Oligoarticular JIA is more difficult to place as its immunopathogenesis is less well understood. There is a female predominance and common to have autoantibodies in oligoarticular JIA (96,97), suggesting autoimmunity, but there are also patients without detectable autoantibodies or autoreactive T cells. Despite being in the autoimmune end of the spectrum, both SLE and oligoarticular JIA have features of inflammation driven by innate immunity (62,98–103).

Introduction to JIA

Clinical definition

JIA is the most common rheumatic disease among children. A JIA diagnosis is given if a child has persistent arthritis during at least six weeks, with a symptom debut before the age of 16 (104). The arthritis has to be “idiopathic”, meaning that it is of unknown cause and not a consequence of infection, trauma or other known condition (97,105).

The JIA diagnosis is relatively new, the diagnosis criteria were defined by the International League of Associations for Rheumatology (ILAR) in the 1990s (106). Before that, the disease went under the names of juvenile chronic arthritis (107) and juvenile rheumatoid arthritis (108). Not only the name, but also the disease definitions vary slightly, and it can therefore be difficult to compare results from research studies on patients diagnosed according to different criteria.

JIA can be further divided into seven subcategories, each with different symptoms and disease progression (105) (Figure 5). There is ongoing debate if the current

diagnosis criteria are the best, or if JIA and its subtypes could be better defined by other measures reflecting immunological mechanisms rather than the number of inflamed joints (109,110).

Epidemiology

The incidence rate and prevalence of JIA varies between geographic regions and ethnicities and is more common in Scandinavia than the global average. The annual incidence rate in the Nordic countries (Sweden, Denmark, Norway, Finland and Iceland) is estimated to 15/100 000 children (111). In Skåne, southern Sweden, where JIA patients in the thesis projects are recruited, the annual incidence rate is 12.8/100 000 children (112).

Approximately two of three JIA patients are female, although the female-to-male ratio differs between the different subtypes (76,104,113,114). The only JIA subtype with a male predominance is enthesitis related JIA (96,104).

Description of the subtypes

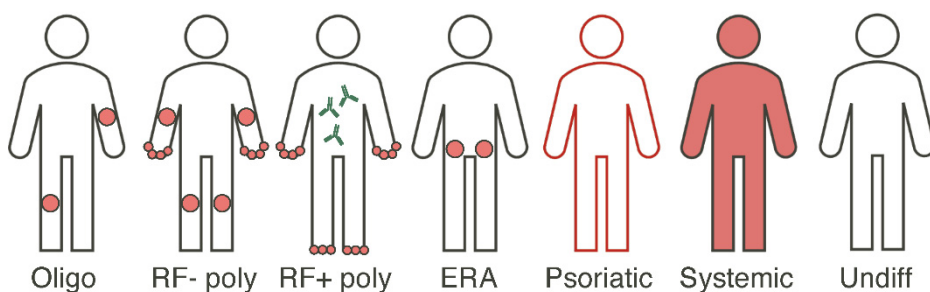


Figure 5. The JIA subtypes. Red areas indicate site of inflammation. Abbreviations: oligo – oligoarticular, poly – polyarticular, RF – rheumatoid factor, ERA – enthesitis related arthritis, undiff – undifferentiated.

Oligoarticular JIA

The most common JIA subtype is oligoarticular JIA, representing approximately 30-60 % of all JIA cases (115), and the main JIA subtype studied this thesis. Children with oligoarticular JIA have a disease onset where one to four joints are affected during the first six months of disease, often asymmetrically in large joints such as the knees. Oligoarticular JIA can be further classified as persistent or extended, depending on whether the disease continues to affect four or fewer joints (persistent) or develops to include five or more joints after the first six months of

disease (extended) (104). The majority of patients with oligoarticular JIA have antinuclear autoantibodies (ANA).

Oligoarticular JIA typically debuts in early childhood, with a peak in incidence by the age of two (112). The symptoms in oligoarticular JIA are often mild but can be painful, limit mobility, and in some cases result in local growth disturbances. The inflammation in oligoarticular JIA is typically limited to the joint, but 10-25 % of the patients develop chronic uveitis, an eye inflammation which might cause permanent visual impairment if not detected and treated early (116–118).

Polyarticular JIA, rheumatoid factor negative

Children with inflammation in five or more joints, in the absence of rheumatoid factor (RF), will be diagnosed with RF negative polyarticular JIA (104). Some patients with RF negative polyarticular JIA have symptoms very similar to those with extended oligoarticular JIA, while others have symmetric inflammation in both large and small joints such as knees, wrists, ankles, hands and feet (96). Similar to oligoarticular JIA, chronic uveitis affects approximately 20 % of the children with RF negative polyarticular JIA (117,118).

Polyarticular JIA, rheumatoid factor positive

Children with polyarticular JIA and a positive RF test have a very similar pathology to adult rheumatoid arthritis (RA), and the disease typically debuts in adolescence (96,104). The small joints in hands and feet are most affected, but larger joints can also be involved. This JIA subgroup is not at risk of developing uveitis (117,118).

Systemic JIA

Systemic JIA is autoinflammatory and very different from the other forms of JIA, with the major symptom not being arthritis but systemic inflammation (104). Typical symptoms include high fever, skin rash, enlargement of liver and spleen, and inflammation in serous tissue. When joints are affected, it is typically symmetric polyarticular arthritis (96). Systemic JIA has no gender bias, and symptom debut can be at any age. The symptoms are very similar to adult onset Still's disease (96,97).

Enthesitis related JIA

Enthesitis related JIA is the only JIA diagnosis more common in boys than girls, with a female-to-male ratio of 1:4 (104). Typical symptoms are inflammation in the connective tissue between the bone and tendons or ligaments. Arthritis mostly affects the lower extremities and hip, and can progress to affect spinal and/or sacroiliac joints (96), making it resemble ankylosing spondylitis. Common comorbidities are inflammatory bowel disease and acute uveitis (96,97).

Psoriatic JIA

Psoriatic JIA resembles oligoarticular JIA regarding type of arthritis and age of disease onset, but with simultaneous psoriasis. The main difference between oligoarticular JIA and psoriatic JIA, except for the presence of psoriasis, is the increased presence of dactylitis (swelling of fingers and/or toes) and small joint involvement in psoriatic JIA (96).

Undifferentiated JIA

This subgroup of JIA is not characterized by a set of symptoms but includes all patients who either do not fulfill criteria for any other subgroup or meet the criteria for more than one (104).

JIA immunopathogenesis

The immunopathogenesis underlying JIA has thus far not been fully characterized and differs largely between the different subtypes. Especially systemic JIA, as an auto-inflammatory disease, is immunologically distinct from the other subtypes. The immunological features of oligoarticular JIA primarily overlap with RF negative polyarticular JIA. As the patients studied in this thesis belong to these subtypes, the following description is based on studies of oligo- and RF negative polyarticular JIA, as well as some studies including JIA patients of all non-systemic subtypes. The immunological alterations in oligo- and RF negative polyarticular JIA are summarized in Figure 6.

Genetics

JIA is a complex, polygenic disease with a genetic landscape overlapping with other autoimmune diseases. About one third of JIA patients has a first-degree relative with autoimmune disease (119). HLA genes are strongly associated with JIA and is estimated to account for 8-13 % of JIA susceptibility (115,120). Gene variants in cytokine and immune signalling genes and genomic regions associated with neutrophils and CD4⁺ T cells are also associated with JIA (115,120–122).

Immunological alterations

Previous research has emphasized the role of adaptive immune responses, as activated T cells are enriched in synovial fluid and synovial tissue contains lymphoid follicular structures of aggregated T-, B-, and plasma cells (123–126). Presence of lymphoid follicles is associated with ANA and plasma cell infiltration (126), suggesting that these lymphoid structures might drive local autoimmunity. An increased amount of memory B cells and IgG secreting plasma blasts have been observed in synovial fluid of inflamed joints (127).

In inflamed joints, Th17 cells are expanded and suppressive Tregs found in decreased numbers (128,129), an imbalance thought to be important in the JIA pathogenesis (130). However, this was contradicted in a recent study that found extensive Th1 skewing of synovial T cells, where also the synovial Tregs had features of Th1 polarization, while Th17 cells were not enriched (131). Patients with extended oligoarticular JIA have Tregs in lower numbers and with decreased suppressive capacity compared to patients with the persistent form (132), indicating that Tregs are important for determination of disease severity (133).

Autoantibodies are common in oligoarticular JIA, especially ANA (96,97,110). Typically, two of three patients or more with oligoarticular JIA are ANA positive, and ANA is detected in approximately 50 % of JIA patients across all subtypes (112,134). It is unclear whether the antibodies have direct pathogenic effects, but ANA positivity is associated with clinical phenotype and development of uveitis (110,117,135–138).

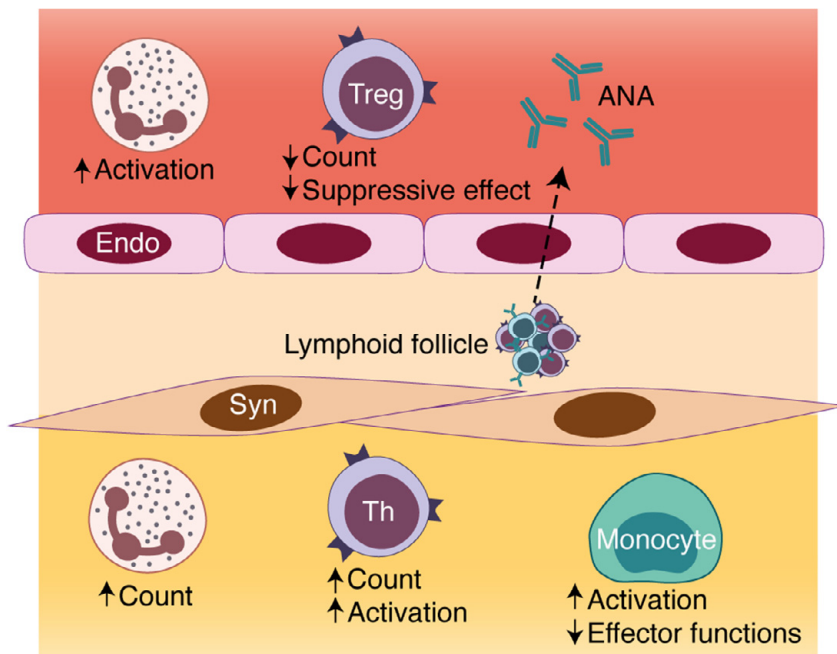


Figure 6. Immune cell alterations in blood (red) and synovial fluid (yellow) in JIA. Endo – endothelium, Syn – synoviocytes.

Contribution of the innate immune system to the JIA pathogenesis has gotten less attention. However, JIA neutrophils show signs of systemic activation and are the most common immune cells in inflamed joints (101,139–141). The evidence for the

role of neutrophils in JIA will be described in detail in the next chapter. Monocytes in inflamed joints are activated, polarized and have impaired phagocytic and ROS-producing capacity compared to monocytes in the blood (142).

Synovial fluid contains high levels of cytokines typical of innate immune system activation (103,143). Cytokines and chemokines which are increased in synovial fluid during arthritis include, but are not limited to, IL-6, IL-8, IL-10, IL-1 β , TNF α , IL-1RA, IL-12, IFN γ , IL-17, GM-CSF and chemokines (129,130,142–144). Some of the cytokines are also increased in blood, and their levels are associated with disease activity and JIA subtype (130,143).

Introduction to SLE

Clinical definition

SLE is a systemic, multi-organ disease which can manifest in almost any organ system. SLE primarily affects women and usually debuts during reproductive age (95,145).

SLE symptoms can include manifestations in the skin (rashes and photosensitivity), oral mucosa (ulcers), joints (arthritis and arthralgia), serous tissues (pericarditis), kidneys (nephritis), central nervous system (seizures and psychosis), blood (anaemia, leukopenia, and thrombocytopenia), and immune system (ANA and antibodies towards DNA, Sm, and phospholipids) (146–148).

Currently there are no diagnostic criteria for SLE, and due to the heterogeneity of the disease it can be difficult to diagnose (149). To ensure that SLE patients in research and clinical studies share a similar disease, classification criteria have been established, representing different SLE symptoms and immunological alterations (146,150,151). Patients are generally considered to have SLE if four or more of the eleven classification criteria are fulfilled, with manifestations in at least two organ systems and at least one immunological alteration, which cannot be explained by any other known condition (146,147). The most recent update of classification criteria from 2019 uses ANA as an entry criterion and has weighted the criteria, so that a combined weight of 10 classifies as SLE, independent of if the sum is obtained from few criteria with high weight or many with low (151,152).

Epidemiology

The incidence and prevalence of SLE varies greatly between countries and ethnicities, with a lower incidence in Europe compared to Asia, the Americas and Oceania (153–155). In Sweden, the prevalence has been estimated to 46-85/100 000 individuals (156), and the annual incidence in Skåne, southern Sweden, is estimated to 4.8/100 000 individuals (157).

The female to male ratio in SLE is approximately 9:1 (145,155). There is less of a female predominance in SLE patients with disease onset either pre puberty or post menopause, indicating an important role of sex hormones (145).

SLE heterogeneity

Since SLE can manifest in various ways and affect almost any organ, there are large heterogeneities among patients regarding symptoms, disease progression, and clinical outcomes, despite sharing the same diagnosis (95,158). A mild version of SLE can present with persistent low disease activity and skin rashes or ulcers as main symptoms, while severe SLE is characterized by high disease activity, nephritis, neuropsychiatric involvement, and cardiovascular disease. Many patients will have a disease course characterized by recurrences of similar manifestations over time, while other patients can change clinical phenotype over the years.

The heterogeneity among SLE patients is also reflected in the immune cells, where transcriptomic and epigenetic profiles are associated with disease activity, clinical phenotypes and autoantibody profiles (159–161).

Antiphospholipid syndrome (APS)

APS is a syndrome characterized by thrombosis and pregnancy complications, such as recurrent miscarriages and preterm delivery, in the presence of antibodies towards phospholipids or phospholipid associated proteins (antiphospholipid antibodies, aPL) (162,163). The aPLs analysed for diagnosis of APS are anti-cardiolipin (CL) and anti- β 2 glycoprotein I (B2GPI) antibodies, and the lupus anticoagulant test (162,164). In addition to thrombosis and obstetric complications, symptoms also include thrombocytopenia, anaemia, cognitive impairment and skin ulcers (162).

APS can occur as a primary syndrome, without underlying disease, but it is estimated that more than a third of all APS cases are associated with SLE (165,166). Around 40 % of SLE patients have at least one type of aPL, and many of these patients will develop clinical APS (165). The APS pathogenesis is partly shared with SLE (98,167), a possible explanation to why the two diseases so often occur together.

SLE immunopathogenesis

The immunology underlying SLE is much more well-characterized than the JIA immunopathogenesis. Important immunological mechanisms and pathways in SLE are summarized in Figure 7.

Genetics

SLE is partly genetic, among SLE patients with monozygotic twins the concordance rate is 24 %, 10-fold higher than in dizygotic twins (168). As in other autoimmune

diseases, HLA genes are associated with SLE (169,170). Genetic deficiencies in proteins important for clearance, including complement proteins (169,171), Fcγ receptors, and nucleases, are strongly associated with SLE (169,170,172). Genetic deficiencies in ROS production are also predisposing for SLE (170,173–175). In rare cases SLE can be monogenic, as is the case with loss of function in complement proteins, C1q, C2 and C4 (171,172), but in most cases the risk for SLE increases with the cumulative number of genetic variants (176).

Clearance

SLE is characterized by an imbalance between generation and disposal of apoptotic material, resulting in an increased autoantigenic burden (172). The complement system, phagocytosis/efferocytosis, and extracellular nucleases are vital for efficient clearance of apoptotic material and abnormalities in all of these functions are strongly associated with SLE (171,177–180).

Apoptotic material can act as DAMPs and trigger inflammatory responses. If recognized by TLR7-9 or cytosolic sensors, nucleic acids will initiate production of type I IFNs, IL-6, IL-1β and TNF (172,177,178).

Autoantibodies and immune complexes

Almost all SLE patients have autoantibodies towards nuclear components, and multiple other self-antigens. The high presence of autoreactive B cells in SLE is associated with overexpression of BAFF, a protein contributing to failed tolerance by promoting B cell activation and preventing deletion of autoreactive B cells (181,182).

Apoptotic material targeted by autoantibodies will form ICs, found in elevated levels in the circulation in SLE and deposited in kidney glomeruli in lupus nephritis (172,183,184). The autoantibodies are pathogenic as IC containing nuclear material will activate TLR7-9 and initiate a pro-inflammatory response and production of type I IFNs (158,178,185). ICs are also thought to mediate tissue inflammation, as IC deposits are found in, and thought to be able to induce, glomerulonephritis in SLE (184,186).

Type I IFNs

The interferons are cytokines named for their capacity to interfere with viral replication, classified into three families. The type I IFNs, including IFNα, -β, -ε, -κ, and -ω, are elevated in the circulation of many patients with SLE (187,188). Ongoing IFN signaling in SLE is typically detected as an “IFN signature” with expression of IFN-stimulated genes (189,190). Epigenetic studies have identified demethylation of IFN-regulated genes in SLE (191,192), suggesting a trained immunity and enhanced IFN-responsiveness.

Plasmacytoid dendritic cells (pDCs) are the main producers of type I IFN, and they release large amounts of IFN upon activation by IC containing nucleic acids. Type I IFNs contribute to autoimmunity as they mediate enhanced antigen presentation by dendritic cells, impair the effect of Tregs, increase plasma cell differentiation and antibody production, increase survival of T cells, and is sustained in a positive feedback loop by enhancing further IFN production by pDC (187).

Neutrophils

Neutrophils contribute to the SLE pathogenesis in various ways, as described in the next chapter. They are primarily described to contribute to the autoantigenic burden via increased apoptosis and release of nuclear content in NETs (193,194).

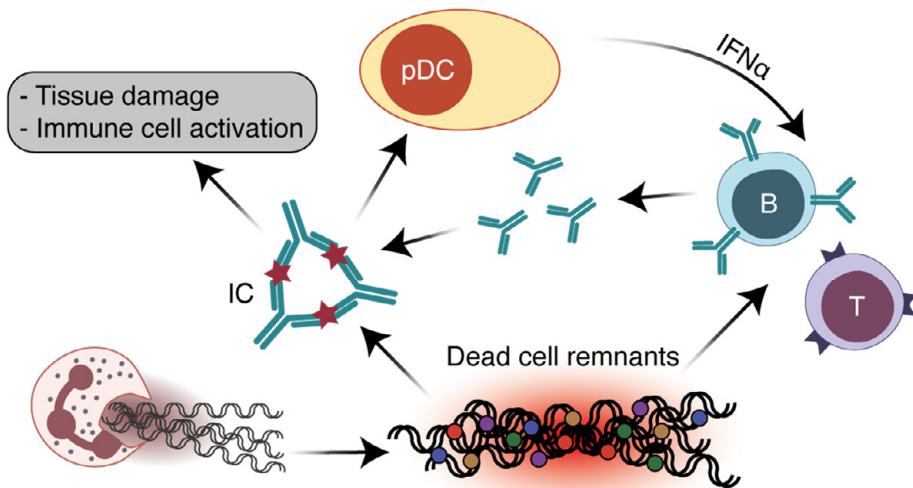


Figure 7. Immunopathogenesis of SLE.

Neutrophils in JIA and SLE

Neutrophils are highly important in the pathogenesis of many autoimmune rheumatic diseases (193), and in SLE there is a large body of evidence for the contribution of neutrophils to pathology (98,193,194). In oligo- and polyarticular JIA on the other hand, a limited number of studies have investigated the role of neutrophils and much remains to be unravelled.

Even though neutrophils are terminally differentiated cells, they still have some plasticity and depending on maturation state and presence in circulation or tissue, their phenotypes are quite heterogeneous even in health (26,195). In autoimmune diseases like JIA and SLE, neutrophils can be very atypical with abnormal functions, which impacts the whole immune system.

Neutrophils in JIA

Like in the general immunopathogenesis of JIA, the role of neutrophils is not the same in all JIA subtypes. The following summary is primarily based on studies on oligo- and polyarticular JIA.

Neutrophil transcriptomic alterations

Even though oligo- and polyarticular JIA are usually not considered to be systemic diseases, there is evidence for systemic neutrophil activation. On the transcriptomic level, neutrophil transcriptomic profiles in RF negative polyarticular JIA are altered compared to controls, and remain so also during periods of inactive disease (101,196,197). By gene expression analysis of JIA peripheral blood mononuclear cells (PBMC), a neutrophil signature was observed, demonstrating a presence of low-density neutrophils, which co-purified with the PBMC, with increased transcription of granular proteins (102). These transcriptional alterations of neutrophils in JIA suggest a primed state of JIA neutrophils.

Calgranulins and neutrophil proteins

Several studies have found elevated levels of calgranulins in JIA blood compared to healthy controls (198–201). Calgranulins, S100A8, S100A9, and S100A12, are calcium-binding proteins with pro-inflammatory and chemotactic properties, associated with inflammatory arthritis (202). The S100 proteins are primarily expressed and released by phagocytes. Neutrophils are a primary source of calgranulins, due to the high relative numbers of neutrophils compared to other phagocytes and that S100A8 and S100A9 are the most abundant proteins in neutrophil cytoplasm (202). Calgranulins are secreted by activated neutrophils (203,204), and elevated levels of S100 proteins could therefore be considered as surrogate markers for neutrophil activation. Calgranulin levels in JIA increases with

disease activity (198–201), and decreases in response to therapy (199,201). Other neutrophil proteins, including neutrophil lipocalin and MPO, are also increased in JIA blood compared to healthy controls (201).

Neutrophils in inflamed joints

The role of neutrophils in joint inflammation in JIA is less studied. Neutrophils are the most common immune cells in synovial fluid of inflamed joints in JIA (141), and JIA synovial fluid contains high levels of S100A8/A9 and different neutrophil proteases (200,205). A recent study reported JIA synovial fluid neutrophils to have a hyperactivated phenotype and express atypical markers, such as HLA-DR (144), which has also been observed on synovial fluid neutrophils in RA (58,59,206).

Much remains to be explored regarding the role of neutrophils in JIA, but the available studies agree that aberrant neutrophil activation is important for JIA pathogenesis.

Neutrophils in SLE

Clearance

Neutrophils have long been known to contribute to SLE pathogenesis. Early studies of neutrophils in SLE identified the lupus erythematosus cell (LE cell), a neutrophil which has phagocytosed, but not degraded, large amounts of autoantibody-opsonized nuclear remnants and apoptotic bodies, pushing the neutrophil nucleus become toward the cell edges (207,208). For a while, the LE cell phenomenon was the most specific test for SLE available (209). Neutrophils in SLE are generally less efficient at phagocytosis and degradation of ingested particles compared to healthy control neutrophils (210,211).

Neutrophil extracellular traps

Despite participating in clearance, neutrophils contribute to the autoantigenic burden. SLE neutrophils in have an increased rate of apoptosis (179,212) and are prone to undergo NETosis (37,99), often accompanied by deficiencies in degradation and clearance of NETs (213,214).

Since the discovery of NETs, they have gained a lot of attention as culprits in SLE (Figure 8) (37,193). NETs can contribute to autoimmunity by exposure of nuclear material, often targeted by autoantibodies in SLE (215–217), and NET components and NET-containing IC are potent inducers of IFN by pDC (61,62,99,218). Mitochondrial and oxidized DNA, sometimes present in NETs, is especially interferogenic (61,219,220). NETs can also induce tissue damage (99) and contribute to the increased cardiovascular morbidity in SLE by acting as a pro-thrombotic surface and cleaving anti-thrombotic proteins (221,222). Aberrant NET

production in SLE quickly becomes a vicious circle, as NETs and NET-containing IC can induce further NET release from other neutrophils (223–225).

SLE patients often have a subset of neutrophils with lower density than normal mature neutrophils (226,227). These cells, called low-density granulocytes (LDGs) or low-density neutrophils (LDN), spontaneously release NETs (61,99), produce type I IFN and other pro-inflammatory cytokines (228), and are thought to account for a large amount of the neutrophil- and NET-mediated pathology in SLE.

However, as with everything, the picture has more dimensions to it. NETs have actually been found to participate in resolution of inflammation by degradation of pro-inflammatory cytokines (67). Additionally, in mouse models with genetic inability to form NETs, SLE features are more severe or unaltered (229,230), indicating that NETs might not be as harmful as often described.

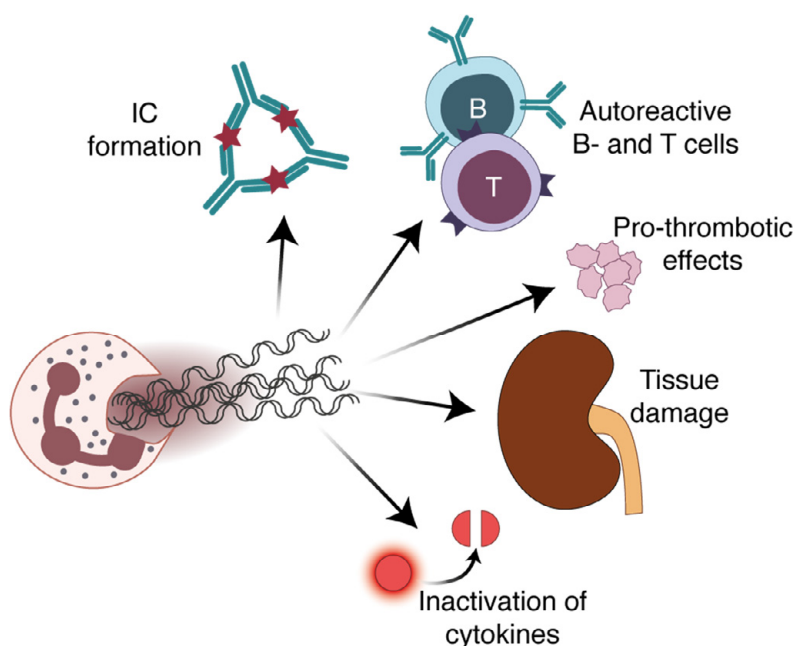


Figure 8. NETs in the pathogenesis of SLE.

Reactive oxygen species

ROS produced by the neutrophil NOX2 complex during oxidative burst are infamous for their potential to induce tissue damage, but in many ways they protect us from autoimmunity and SLE (Figure 9) (231).

SLE neutrophils have impaired oxidative burst compared to healthy controls, associated with organ damage (232). Genetic variants mediating impaired function

of the NOX2 complex are associated with both SLE and other autoimmune rheumatic diseases (174,233–235), and in mouse models of deficient NOX2 function, SLE like symptoms either develop spontaneously or become exacerbated (100,229,236,237).

NOX2-derived ROS have several effects on the immune system which might be involved in the protection from autoimmunity. In phagocytes, NOX2-derived ROS are necessary for quiescent clearance of dead cell remnants by facilitating phagosomal pH regulation and degradation of phagocytosed material (238,239). Extracellular ROS are important messenger molecules which affects other immune cells. For instance, ROS can inhibit IFN production (236,240,241), and neutrophils can suppress T cell proliferation and activation via release of ROS (242–245) (Figure 9).

The second source of ROS, present in all cell types, is the mitochondrion, producing ROS during cellular respiration (246). Unlike NOX2-derived ROS, released by tightly controlled mechanisms, mitochondrial ROS (mtROS) is more of a loose cannon. There is a tight relationship between dysfunctional mitochondria, mtROS, and production of pro-inflammatory cytokines in many chronic diseases (247). In SLE, there is evidence for mitochondrial dysfunction and subsequent oxidative stress (248,249). The mitochondria contain DNA, which is not enclosed in a nucleus and thereby highly sensitive to oxidative damage by mtROS. Oxidized mitochondrial DNA, which can be released extracellularly in NETs or via extrusion of mitochondria or mitochondrial components, is highly interferogenic and found extracellularly in elevated levels in SLE (61,220). Another contribution of mtROS to IFN signaling is that excessive mtROS in SLE can induce virus-independent oligomerization of mitochondrial antiviral-signaling protein (MAVS), which initiates production of IFN (250).

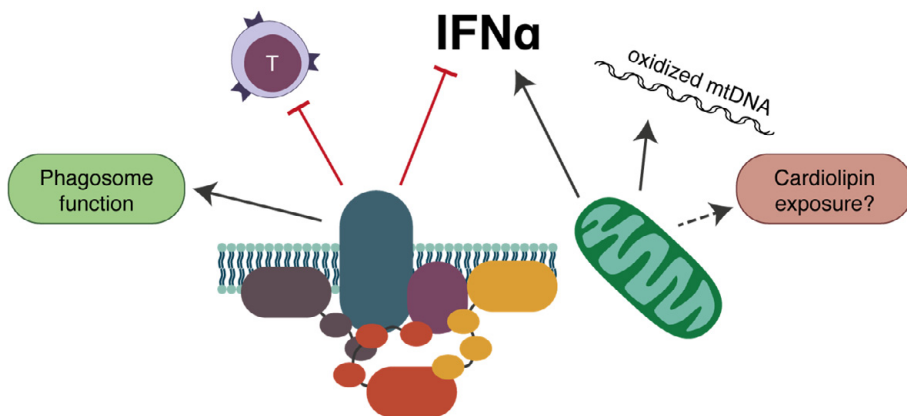


Figure 9. The effects of ROS produced by the NOX2 complex and mitochondria in SLE. Modified from (98).

Autoantibodies in JIA and SLE

Autoantibodies in JIA

ANA

Approximately half of JIA patients across all subtypes have ANA, and in oligoarticular JIA the numbers are as high as 60-80 % (112,134). Presence of ANA in JIA is more common in girls than boys and associated with early disease onset and an increased risk of developing uveitis (136,138,251). As ANA are associated with a certain clinical phenotype in JIA, it has been suggested as a classification criterion for redefined JIA subtypes (109,110).

The nucleus contains a multitude of potential autoantigens, both proteins and nucleic acids. ANA are commonly detected by immunostaining of permeabilized cells and can therefore be studied without knowledge of the specific antigen that they target. The antigen repertoire targeted by ANA in JIA is not fully characterized, but identified nuclear autoantigens in JIA include histones (138,252,253), high mobility group box 1 and 2 (254,255), and heat shock proteins (256,257). ANA positivity in JIA is more common than specific antibodies towards these identified antigens, and it is therefore likely that ANA target also other, yet undescribed, autoantigens.

The limited knowledge of autoantigens in JIA makes it difficult to use autoantibodies as biomarkers in JIA. As ANA are so common but uveitis quite rare (occurring in approximately 10-25 % of patients with oligo- or RF negative polyarticular JIA (116–118)), there is a need for a better biomarker for identification of patients at risk for developing uveitis.

Other autoantibodies

Based on the association between autoantibodies and uveitis, some studies have investigated potential ocular autoantigens in JIA (258,259). However, these studies either found proteins expressed in many tissues or detected autoantibodies by staining whole ocular tissue without determination of the specific proteins, so it is still unclear if antigens with restricted expression in the eyes could be involved in the pathogenesis of uveitis.

Antibodies towards extracellular matrix proteins have been detected in JIA (260,261), and were in these studies associated with joint inflammation or a more aggressive disease.

An important diagnostic autoantibody in JIA is RF, an antibody targeting the Fc-portion of IgG, which separates patients with RF positive and negative polyarticular JIA (96,134). Among patients with RF positive polyarticular JIA, but not any other

JIA subtype, it is also common to have antibodies towards citrullinated proteins (ACPA) (262). Both ACPA and RF are common in adult RA, and there are many similarities in the clinical features of RA and RF positive polyarticular JIA.

Except for ACPA, antibodies targeting other types of post-translationally modified proteins are present in many JIA subtypes (134).

Autoantibodies in SLE

SLE is a disease of many autoantibodies, with more than hundred described autoantigens (263).

Autoantibodies in SLE are clearly contributing to the disease progression and clinical symptoms in SLE (263), especially when they form IC. As described in the immunopathogenesis of SLE, IC made of ANA and nuclear material can contribute to disease by inducing IFN production, NET release, or inflammation in tissues with IC-deposition.

ANA

The most common type of autoantibodies in SLE is ANA. ANA are present in almost all patients, often used as diagnostic biomarkers, and suggested as an entry criterion for SLE classification (151,186). In contrast to ANA in JIA, many ANA-targets in SLE are identified. The most commonly targeted nuclear antigens in SLE are DNA, histones, and RNA binding proteins (186,263), and in addition to these there is a long list of other nuclear components sometimes targeted by ANA.

Antiphospholipid antibodies

APS represent a typical case of where an antibody profile is associated with a clinical outcome. It is estimated that approximately 40 % of SLE patients have at least one aPL, and that 50-70 % of the patients with aPL will develop clinical APS with thrombotic and/or obstetric events (165). The clinical features of APS are largely driven by the aPL, which mediate pro-coagulant effects via platelet activation, endothelial cell perturbations, disruption of anticoagulation processes, and placental cell disturbances (164).

The aPL included in the diagnosis for APS are targeting cardiolipin, B2GPI and lupus anticoagulant. The aPL nomenclature is confusing as it is unclear if aPL target the phospholipids directly or if the binding is indirect, mediated by phospholipid-binding proteins (167). For instance, B2GPI is not a phospholipid but one of these phospholipid-binding proteins.

Anti-B2GPI has the most clinical significance of the aPL, and these antibodies are the most well-described mediators of pro-thrombotic effects (164,167). B2GPI has five domains, where domain V is the phospholipid-binding domain, and domain I is

recognized by the pathogenic aPL. B2GPI is cationic and binds to negatively charged phospholipids on the surface of apoptotic cells, and when doing so it exposes the antigenic domain I (264).

Cardiolipin is a phospholipid of the inner mitochondrial membrane, named after its first identification in bovine heart. CL can be exposed on the surface of apoptotic cells (265), and other sources of possible CL exposure include mitochondrial components present in NETs or extruded from neutrophils (61,220).

The lupus anticoagulant antibody is another misnomer. It is named for the increased clotting time it mediates *in vitro*, but contrary to the name its presence in disease is associated with thrombotic events (266). Unlike CL and B2GPI, lupus anticoagulant is detected by its *in vitro* effect, and which specific phospholipid or phospholipid-binding protein it targets is not fully known (266).

Antibody associations with clinical outcomes

Not only aPL are associated with clinical outcomes in SLE. Anti-DNA antibodies are associated with both disease activity and nephritis (186,267–269), but it is unclear whether their presence can be used for disease monitoring or prediction of disease flares. Other autoantibodies associated with certain clinical phenotypes in SLE are antibodies towards ribonucleoproteins which are more common in patients with Raynauds phenomenon (whitening of fingers due to temporary vessel spasms), anti-SSA and -SSB (Sjögren's syndrome antigen A and B) which are associated with skin manifestations, and anti-ribosomal P protein which is associated with neuropsychiatric lupus (269–271).

The present investigation

The four studies of this thesis have investigated several aspects of the immunology of JIA and SLE.

Study I is a descriptive study of neutrophils in inflamed joints compared to blood in children with JIA. Neutrophils were studied both regarding phenotype and function.

Study II investigated the influence of neutrophils, from blood or inflamed joints of JIA patients, on T cell proliferation. This study also investigates mechanisms for neutrophil-mediated suppression of T cells and how this is affected by neutrophil migration.

Study III investigated the effect of a genetic variant in NCF1, mediating impaired NOX2-mediated ROS production, on multiple aspects of SLE pathology. The parameters studied included neutrophil function, autoantibody profile, and clinical outcomes.

Study IV explored autoantibodies and autoantigens in JIA, and their potential clinical use as biomarkers. The study aimed to identify novel JIA autoantigens, using both exploratory and targeted methods.

Study I. Synovial fluid neutrophils in oligoarticular juvenile idiopathic arthritis have an altered phenotype and impaired effector functions

Background and aim

Neutrophil alterations are evident in many autoimmune rheumatic diseases. In JIA, studies suggest that circulating neutrophils are activated, especially during arthritis flares. However, in oligoarticular JIA, symptoms are generally not systemic but localized to the affected joints. Inflamed joints are infiltrated by high numbers of neutrophils, yet little is known about neutrophils at the site of inflammation in JIA.

This study aimed to characterize neutrophils regarding both phenotype and function in blood and synovial fluid of children with oligoarticular JIA.

Method

Neutrophils were investigated in paired samples of blood and synovial fluid from 17 patients with active oligoarticular JIA. In six of the patients, blood neutrophils were also studied during inactive disease.

Neutrophil phenotype was investigated by flow cytometry by staining JIA blood and synovial fluid for surface markers related to neutrophil activation, maturation, migration, and polarization. Neutrophil phenotype was also investigated in healthy blood neutrophils after *in vitro* exposure to oligoarticular JIA synovial fluid. Healthy oral cavity neutrophils, which have migrated towards a non-inflammatory site, were studied as tissue migration controls.

Neutrophil effector functions phagocytosis and oxidative burst were both investigated by flow cytometry. Neutrophils in paired blood and synovial fluid were allowed to phagocytose fluorescently labelled and opsonized bacteria, quantified by flow cytometry. Oxidative burst was quantified by DHR-123, a component which is nonfluorescent until oxidized by ROS, in stimulated blood and synovial neutrophils.

Key findings

The neutrophil phenotypes were distinctly different between blood and synovial fluid. Synovial fluid neutrophils had increased activation markers and a phenotype associated with neutrophil maturity and age compared to neutrophils in the blood. The synovial fluid neutrophils had gained expression of CD206, a mannose receptor

commonly not found on neutrophils but on monocytes, macrophages, and dendritic cells.

Blood neutrophils had a similar phenotype both during flares and inactive disease, suggesting that local rather than systemic alterations are important in the arthritic inflammation.

It was not possible to induce the phenotype of synovial fluid neutrophils simply by exposing healthy blood neutrophils to synovial fluid *in vitro*, nor was the phenotype of oral cavity neutrophils shared with synovial fluid neutrophils. Thus, the phenotype of synovial fluid neutrophils was not mediated by synovial fluid or tissue migration alone.

Neutrophil phagocytosis, and to some extent also the oxidative burst, was impaired in synovial fluid neutrophils compared to blood neutrophils. The impairment in effector functions had an inverse correlation with expression of CD206, where neutrophils in the synovial fluids with the highest proportion of CD206⁺ neutrophils had the lowest phagocytic and ROS producing capacities.

Conclusions

This study demonstrated that neutrophils in synovial fluid of inflamed joints in children with oligoarticular JIA are altered both regarding phenotype and function.

Synovial fluid neutrophils have a distinct phenotype compared to circulating neutrophils in the same patient. The synovial fluid neutrophil phenotype is characterized by markers related to neutrophil activation and age, and an acquired expression of CD206. The synovial fluid neutrophils also have impaired effector functions, which is associated with the phenotype shift.

These neutrophil alterations induced at the site of inflammation might contribute to the sustained joint inflammation.

Study II. Neutrophils lose the capacity to suppress T cell proliferation upon migration towards inflamed joints in juvenile idiopathic arthritis

Background and aim

Neutrophils are important immunoregulators with the capacity to both potentiate and suppress inflammatory reactions. A central immunosuppressive feature of neutrophils is their ability to suppress T cell proliferation and cytokine production.

In inflamed joints in JIA, neutrophils are altered in both phenotype and function, compared to circulating neutrophils. However, the immunosuppressive capacity of neutrophils at the site of inflammation in JIA has not previously been investigated.

This study aimed at characterizing the interplay between neutrophils and T cells in oligoarticular JIA, and how it is affected by neutrophil migration from the blood towards the inflamed joint.

Method

Neutrophils were isolated from blood (n=9) and synovial fluid (n=11) from children with oligoarticular JIA. Suppression of T cells was investigated by co-culture of isolated JIA neutrophils with healthy donor T cells, activated by CD3 and CD28 stimulation, followed by analysis of T cell proliferation. T cells were labelled with the fluorescent dye CellTrace, the concentration of which is halved by each cell division, and T cell proliferation could be analysed by flow cytometry.

An artificial synovial membrane was made using transwell inserts with endothelial cells on the inside and knee synoviocytes on the underside of the membrane, placed in culture wells containing JIA synovial fluid. Healthy donor neutrophils were allowed to migrate over the artificial synovial membrane followed by analysis of T cell suppression, oxidative burst, and proteomic alterations.

Oxidative burst was quantified by DHR-123, as in study I.

Proteomic alterations of in vitro migrated neutrophils were investigated by liquid chromatography mass spectrometry (LC-MS), identifying and quantifying the abundances of proteins present in the neutrophils based on peptide mass fingerprinting.

Key findings

Neutrophils isolated from JIA blood suppressed T cell proliferation to a similar extent as blood neutrophils from healthy controls. Neutrophils isolated from synovial fluid on the other hand clustered into two groups, where synovial neutrophils from six of the patients were highly suppressive and synovial fluid neutrophils from five patients were completely non-suppressive.

Healthy donor neutrophils which were allowed to migrate towards JIA synovial fluid in the artificial synovial membrane lost their capacity to suppress T cell proliferation. However, neutrophils incubated in the same synovial fluid retained an inhibitory effect, demonstrating that the migration process rather than exposure to synovial fluid mediates the loss of T cell suppressive capacity.

In vitro-migrated healthy neutrophils had impaired oxidative burst compared to neutrophils incubated in synovial fluid. On the proteomic level, in vitro migration induced alterations in proteins involved in immunoregulation, cell-cell contact, and synapses (both immune and neuronal), suggesting that these mechanisms might be important for neutrophil suppression of T cells.

Conclusions

This study showed that synovial fluid neutrophils in many oligoarticular JIA patients are unable to suppress the proliferation of activated T cells.

The loss of suppressive capacity could be replicated in healthy neutrophils which migrated towards JIA synovial fluid in a model system of a synovial membrane. Results from the migration model suggest that the loss of T cell suppression may be mediated by decreased oxidative burst, alterations in immunomodulating proteins and impaired cell-cell contact.

Loss of suppressive capacity of neutrophils in the inflamed joint could hinder resolution of inflammation or contribute to development of local autoimmune reactions.

Study III. NCF1-339 polymorphism is associated with altered formation of neutrophil extracellular traps, high serum interferon activity and antiphospholipid syndrome in systemic lupus erythematosus

Background and aim

ROS, produced by the NOX2 complex in phagocytes are important negative regulators of the immune response. A recently discovered missense single nucleotide polymorphism (SNP) in the *NCF1* gene, encoding the NOX2 complex subunit NCF1 (also known as p47phox), affects the ROS producing capacity. The SNP is denoted NCF1-339 and the minor NCF1-339 T allele mediates impaired ROS production compared to the major C allele. Additionally, the *NCF1* gene can vary in copy number, and the function of the NOX2 complex is impacted by both *NCF1* copy number and NCF1-339 genotype.

Previous studies have demonstrated that the NCF1-339 T allele is strongly associated with SLE, but the underlying mechanisms and possible associations with clinical outcomes are unknown. This study aimed to characterize the effects of

NCF1-339 on different aspects important in the SLE pathology: neutrophil release of NETs, serum IFN, presence of autoantibodies and clinical phenotype.

Method

Neutrophil NET release was studied in 31 SLE patients, all with two copies of the *NCF1* gene but different NCF1-339 genotypes. NETs were induced by stimuli activating pathways dependent on or independent of NOX2-derived ROS. To determine the importance of different sources of ROS, inhibitors blocking either NOX2-derived or mitochondrial ROS were used. NET release was measured by extracellular DNA quantification.

Serum IFN levels were quantified with an indirect method, where a responder cell line was incubated with serum from 141 SLE patients followed by analysis of IFN inducible gene expression.

Presence of autoantibodies, analysed by accredited clinical laboratories at Lund University hospital, were studied cross-sectionally in 305 SLE patients. Clinical parameters of antiphospholipid syndrome (APS) were investigated in 1087 SLE patients from four Swedish university hospitals.

Patients were divided into genotype groups to reflect the ROS producing capacity based on NCF1-339 genotype and *NCF1* copy number. A “normal ROS” genotype has two or more *NCF1* copies with C at NCF1-339, other genotypes are “low ROS”. For analyses of NETs, IFN, and autoantibodies, patients were categorized based on number of *NCF1* copies with C at NCF1-339; as 0C, 1C and ≥ 2 C genotypes. In the clinical analysis of APS patients were divided into two groups: C genotypes (≥ 2 C) and T genotypes (0C and 1C).

Key findings

Neutrophils from SLE patients with NCF1-339 0C and 1C genotypes had significantly impaired capacity to release NOX2 dependent NETs compared to neutrophils from patients with NCF1-339 2C genotype. NET release from neutrophils of NCF1-339 0C genotype patients was more dependent on mitochondrial ROS than neutrophils from patients with NCF1-339 2C genotype. NET release via pathways independent NOX2 derived ROS was unaffected by NCF1-339 genotype.

Four out of five SLE patients with NCF1-339 0C genotype had high serum IFN levels, despite inactive disease or low disease activity at the time of blood sampling. This was significantly higher than the proportion of ca 20 % of SLE patients with NCF1-339 2C genotype which had high serum IFN levels.

A significantly increased proportion of SLE patients with NCF1-339 0C genotype had antibodies towards B2GP1 and CL compared to patients with NCF1-339 1C and 2C genotypes. No other antibodies investigated were significantly associated with NCF1-339 genotype.

Antibodies towards B2GP1 and CL are hallmarks of the cardiovascular syndrome APS, common among SLE patients. In an analysis of 1087 SLE patients from four university hospitals, SLE patients with NCF1-339 T genotypes to a larger extent had a clinical diagnosis of APS.

Conclusions

This study showed that NCF1-339 genotype affects many aspects of the immune system and is associated with alterations in both cellular, systemic, and clinical features of SLE.

On a cellular level, a NCF1-339 0C genotype with impaired NOX2 function, affects the capacity of neutrophils to release NETs and skews NET release towards a pathway dependent on mitochondrial ROS. Systemically, the NCF1-339 0C genotype is associated with high levels of circulating IFN and presence of antiphospholipid autoantibodies. On a clinical level, SLE patients with low ROS NCF1-339 T genotypes to a larger extent have secondary antiphospholipid syndrome.

Together the results demonstrate how phagocyte ROS production can shape many aspects of the immune system, from neutrophil function to autoantibody profile and clinical outcomes.

Study IV. Identification of novel autoantigens in juvenile idiopathic arthritis

Background and aim

Many patients with JIA are positive for autoantibodies, but the specific antigens targeted by autoantibodies in JIA are largely unknown. ANA are common, and as ANA are detected by immunofluorescence staining of cells presence of these autoantibodies can be detected without knowledge of the specific antigens. In JIA, ANA are associated with early disease onset and an increased risk of developing uveitis.

However, as ANA are very common, they are of limited use as predictive biomarkers to identify children with risk to develop uveitis. Knowledge of specific

autoantigens in JIA could both increase understanding of the pathogenesis and be helpful in the search for biomarkers with diagnostic, prognostic, or monitoring potential.

This study aimed to identify JIA autoantigens with the potential to distinguish between JIA patients and healthy controls, and autoantigens associated with JIA related uveitis.

Method

Two large-scale exploratory methods were used to identify potential autoantigens in JIA; an autoimmune profiling planar array and immunoprecipitations.

In the planar array, 42 100 peptides from 18 000 unique proteins, representing approximately 94 % of the human proteome, were spotted on glass slides. The slides were incubated with JIA plasma pools, stained for anti-human IgG, and detected by immunofluorescence scanning.

In the immunoprecipitations, JIA plasma was incubated with whole cell protein extracts. IgG were captured by Protein G-coupled magnetic beads, bound proteins were eluted and identified by LC-MS which identifies proteins based on peptide mass fingerprinting.

Based on hits from the planar array, immunoprecipitations, and previous literature on autoantigens in JIA and uveitis, a selection of 335 peptides were investigated in a targeted array, coupled to colour coded magnetic beads. Serum from 57 patients with oligoarticular or RF negative polyarticular JIA and 22 paediatric healthy controls were analysed in this array.

Briefly, JIA autoantigens were defined as antigens with reactivity in <10 % of the paediatric controls and >10 % of the JIA patients.

Key findings

Reactivity towards a total of 332 peptides were detected in the planar array, and 131 proteins in the immunoprecipitations. There was very little overlap between the two methods, with only two proteins being detected by both methods.

In the targeted array, 73 peptides were excluded based on high reactivity in the controls. Of the remaining 262 peptides, 20 had reactivity in at least 10 % of the JIA patients.

Of the 20 potential JIA autoantigens, 16 were completely novel, to our knowledge not previously described in JIA. The identification of JIA autoantibodies towards histones, Sjögren's syndrome antigen B (SSB) and GAPDH, previously described autoantigens in JIA and autoimmune eye disease, verified the assay.

JIA patients had a higher number of reactivities towards the identified potential autoantigens compared to the controls. As many as 86 % of the patients had antibodies towards at least two of the peptides, compared to 23 % of the controls. Antibodies towards three or more of the peptides was present in 47 % of the JIA patients and 4.5 % of the controls.

Three peptides, from the proteins KDM7A, KDM3B and ZBTB22, were strongly associated with uveitis. All patients with uveitis in the cohort had antibodies towards at least one of these peptides, compared to 19 % of the patients without uveitis.

Conclusions

This study used a combination of exploratory and targeted methods for identification of JIA autoantigens. A total of 20 potential JIA autoantigens were identified, 16 of which have not previously been described as autoantigens in JIA. Three antigens were strongly associated with uveitis.

Discussion

The entire immune system is affected in autoimmune rheumatic diseases, where abnormalities in one aspect can disrupt the balance of the whole immune system. This thesis has focused on the role of neutrophils and autoantibodies, connected via intricate immune cell communications, in autoimmune rheumatic disease. Figure 10 represents a schematic overview of the interactions between neutrophils and the adaptive immune system studied in this thesis.

The underlying immunopathology of JIA and SLE have several common features, including the presence of autoantibodies and a neutrophil activation signature. The fact that the autoantibodies in both JIA and SLE are primarily targeting nuclear material, albeit with different specific autoantigens, is indicative of a shared underlying mechanism.

Possibly, impaired clearance of dead cell remnants by neutrophils can contribute to the autoimmunity towards nuclear material. Neutrophils in SLE are described to have impaired phagocytic capacity (210), and this was also observed in neutrophils of inflamed joints in JIA patients in this thesis. Impaired production of NOX2-derived ROS could also be a common denominator between JIA and SLE. ROS are important immunoregulators and low capacity of oxidative burst was associated with disease in studies I-III of this thesis. In this thesis, neutrophil alterations were detected in the blood in SLE but only locally in the inflamed joint in JIA, indicative of how SLE is a systemic and JIA an organ-specific autoimmune disease.

The main difference between the immunopathogenesis of JIA and SLE is the IFN-signature, central in the SLE pathogenesis but not in JIA. IFN α -containing cells are found in JIA synovial tissue and -fluid, but their presence is not associated with elevated IFN α in blood or synovial fluid (272). However, the IFN α -expressing cells were localized adjacent to lymphoid follicular structures in the synovial tissue (272), indicating that it could have a role in local stimulation of T- and B cells in inflamed joints.

The partially shared immunological alterations between JIA and SLE are expected as the diseases are part of the same disease spectrum. Considering this, it is likely that the immunological mechanisms and processes studied in this thesis are involved also in the pathogenesis of other autoimmune rheumatic diseases, in addition to JIA and SLE.

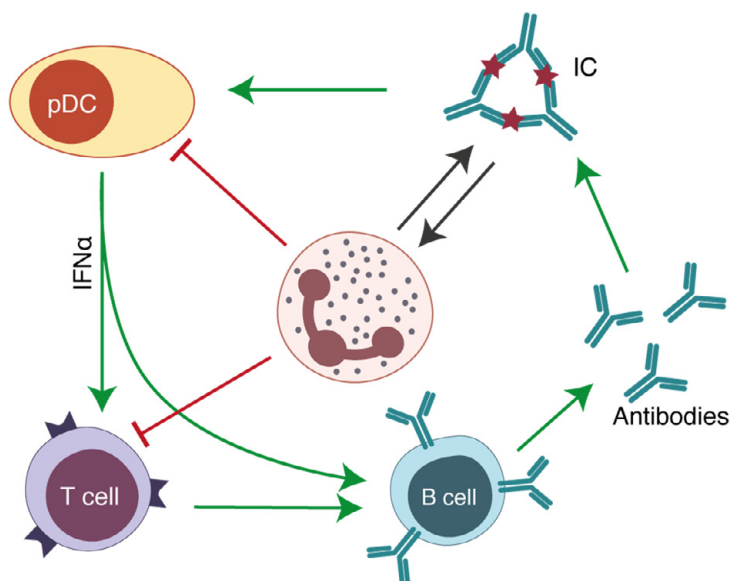


Figure 10. Summary of neutrophil- and antibody-driven immunology in JIA and SLE. Green arrows indicate activating signals, red lines indicate inhibition, grey arrows indicate interaction. Neutrophils can suppress T cell activation and IFN α production by pDCs, and have a dual relationship with IC as they can both contribute with autoantigens, clear IC via phagocytosis and become activated by IC-stimulation. B cells are activated by T cells and IFN α signaling, and can differentiate into antibody-producing plasma cells. ICs can induce further IFN α release from pDCs.

In study I, neutrophils in synovial fluid were found to be activated and functionally impaired. The synovial neutrophil phenotype was polarized, with expression of surface markers related to monocytes and macrophages. Although being of different cell types, neutrophils and monocytes are closely related and developed from the same myeloid lineage. Recent research suggest that immune cells are developed in a phenotypic continuum (273), and neutrophils expressing APC-markers and even neutrophils “transdifferentiating” into monocytes have been demonstrated in vitro (51,274,275), showing that neutrophils can polarize towards other cell phenotypes despite being terminally differentiated.

The impaired phagocytic capacity seen in synovial fluid compared to circulating neutrophils could mediate impaired clearance in the inflamed joint, and thus contribute to increased autoantigenic burden or IC-formation (Figure 10). Both phagocytosis and oxidative burst were related to the proportion of CD206-expressing neutrophils in synovial fluid, demonstrating that the phenotype and function is closely connected. Monocytes tend to be slower at phagocytosis and have lower capacity for oxidative burst compared to neutrophils, so possibly the

alteration in neutrophil function in synovial fluid is another feature of the neutrophil polarization.

In study II, both JIA synovial fluid neutrophils and neutrophils which had migrated towards synovial fluid in vitro displayed impaired capacity to suppress Th cells. A lack of Th cell suppression is likely to contribute both to sustained inflammation and development of local autoimmune reactions in the joint, as activated Th cells potentiate further adaptive immune responses (Figure 10). There are T cell imbalances in the JIA immunopathogenesis, and it is possible that some of these T cell imbalances might be a consequence of impaired immunoregulation by neutrophils.

The mechanism for lack of immunosuppression seems to be at least partially driven by decreased NOX2-derived ROS, indicating that the functional impairment of synovial neutrophils detected in study I can have negative consequences on the local immunoregulation. Immunosuppressive delivery of ROS from neutrophils to T cells is thought to occur via an immunological synapse, as T cell suppression is dependent on both ROS and cell-cell contact (56). In the proteomic analysis of migrated neutrophils, many proteins involved in cell-cell contact were decreased, supporting this hypothesis.

In study III, a the NCF1-339 SNP, mediating impaired NOX2 function, was associated with altered NET formation, a type I IFN-signature and presence of aPL. This study is adding on to previous results demonstrating that NCF1-339 T genotypes are strongly associated with SLE and an early disease onset (175). The importance of the polymorphism is supported by a recent study investigating NCF1-339 (NCF1 R90H) in a mouse model. They found that mice homozygous for the polymorphism spontaneously developed features of autoimmunity, including elevated type I IFN levels (276). When challenged with pristane, the homozygous mice developed SLE-symptoms including nephritis and autoantibodies (276).

Contradictory to many studies demonstrating how NETs contribute to SLE pathology, neutrophils from the patients with the low-ROS NCF1-339 T-genotypes had impaired capacity for canonical NOX2-dependent NETosis. However, NET release by NOX2-independent pathways was not affected by the SNP, and evidence suggest that SLE-NETs are primarily generated by pathways independent of NOX2-derived ROS (277). The decreased capacity for NOX2-dependent NETosis in patients with NCF1-339 T-genotypes might therefore be of limited biological relevance. More probably, it is the impairment in ROS-mediated suppression of excessive immune responses, including inhibition of IFN α signaling and T cell activation (Figure 10), which is responsible for the disease association of the NCF1-339 T-genotype.

Little is known about the role of NOX2 in APS, but the two conditions share several immunological mechanisms (98,167). Potentially, the low levels of NOX2-derived

ROS cause a compensatory increase in mtROS, which could lead to mitochondrial dysfunction and extrusion, exposing cardiolipin.

In study IV, JIA autoantigens and their relation to uveitis were investigated. 20 potential JIA autoantigens were detected, three of which were significantly enriched among patients with uveitis. Among the potential JIA autoantigens, four have previously been described as autoantigens in JIA and uveitis; three of them (two histone peptides and SSB) in JIA (137,252,261), and one (GAPDH) in autoimmune eye disease (278). The detection of previously known antigens validates our method and increases the trustworthiness of the novel antigens detected.

No antigen could singlehandedly distinguish between JIA patients and paediatric controls, but the higher cumulative number of reactivities in patients than controls suggest that an analysis of antibody combinations could be useful to identify JIA. Three of the antigens were significantly associated with uveitis, and all patients with uveitis included in the study had antibodies towards at least one of these antigens, compared to less than 20 % of the patients without uveitis. This indicates that these antigens could be much more useful than ANA-status when predicting risk for uveitis.

Conclusion

The studies of this thesis identified alterations in, and a connection between, neutrophil function and autoantibody profiles in JIA and SLE. In these works, the neutrophils seem to mediate disease primarily by being less efficient at immunoregulatory processes such as clearance and immunosuppression, rather than by actively potentiating inflammation. The lack of neutrophils acting as an immunological brake increases the risk of autoimmune reactions, and thereby affects the autoantibody profile. The autoantibody profile is in turn associated with the clinical outcomes. Everything is connected.

Acknowledgements

I would like to send a big thank you to everyone who have helped me along the way, without whom this thesis would not have been possible. Here is some well-deserved praise for you.

Robin, thank you for accepting me into your research team, believing in my potential, and supporting me through this journey. Your optimism and enthusiasm is contagious, which has been immensely helpful at times when the projects were tough. Thank you for both guiding me and letting me explore my own ideas at the same time. I feel lucky to have had the opportunity to work with you.

Anders, thank you for taking me in to the lab when I was fresh out of school, and giving me the opportunity to work with such interesting projects. Your passion for and knowledge of clinical and translational research has inspired me to widen my interest from immunology, cells, and mechanisms to also see the patient perspective.

Anki and Gittan, you truly are superheroes and the engines of the lab, spreading a positive and friendly atmosphere to the whole team. Thank you for always being ready to help and able to solve any problem imaginable, no matter if it's scientific or not. And thank you for cheering me on when I've been critical about my work.

Fredrik, thank you for always being enthusiastic, encouraging, and constantly having clever ideas up your sleeve. Your expertise in statistical analysis has been a lifesaver.

Tobias, I could never have asked for a better colleague. I'm so glad I got to share projects, office, and everyday lab-life with you. Thank you for being both a great scientist and a great friend.

My clinical PhD student colleagues **Elisabet, Alma** and **Andreas**. A big thank you for brightening up my PhD journey with your lovely company and creative ideas. Special thanks to Elisabet for your help with clinical data collection.

Current and former members of the SLE research group, **Andreas, Helena, Petrus, Elsa, Lina**. Thank you for answering my curious questions, for the scientific discussions, and for contributing with constructive ideas. I have learned a lot from you.

My lab-module-neighbours in the kidney/vasculitis group, **Julia, Åsa, Lena** and **Thomas**. Thank you for sharing your equipment and expertise, but more importantly for your eminent company during breaks for coffee and table tennis.

Maria, Anita, Anna and **Malin**, a big thank you for your efforts with patient sample collection, without you I would have had nothing to study. I'm truly grateful for your efficient and helpful work.

Thank you to all **co-authors and collaborators** I've worked with over these years. The projects would not have been the same without you.

My friends, thank you for the social support, for making me laugh, for all the fun adventures, and for being there for me.

My family, thank you **Mamma** and **Pappa** for encouraging my interest in science from an early age, for your loving support and undoubted belief in me. I would not have been where I am today if not for you. **Christine**, thank you for filling my life with fun and for your ability to make me feel proud of my accomplishments.

Last, but not least, thank you **Daniel** for being by my side through this work. You're the wisest person I know, and your insights and perspectives have made me a better scientist. Thank you for everything.

References

1. Abbas MBBS AK, Lichtman MD PhD AH, Pillai MBBS PhD S. *Basic Immunology: Functions and Disorders of the Immune System*. 6th ed. Elsevier; 2019.
2. Beutler B. Innate immunity: an overview. *Mol Immunol*. 2004 Feb;40(12):845–59.
3. Gordon S, Taylor PR. Monocyte and macrophage heterogeneity. *Nat Rev Immunol*. 2005 Dec;5(12):953–64.
4. Sarma JV, Ward PA. The complement system. *Cell Tissue Res*. 2011 Jan;343(1):227–35.
5. Zindel J, Kubes P. Damps, pamps, and lamps in immunity and sterile inflammation. *Annu Rev Pathol*. 2020 Jan 24;15:493–518.
6. Patel S. Danger-Associated Molecular Patterns (DAMPs): the Derivatives and Triggers of Inflammation. *Curr Allergy Asthma Rep*. 2018 Sep 28;18(11):63.
7. Netea MG, Joosten LAB, Latz E, Mills KHG, Natoli G, Stunnenberg HG, et al. Trained immunity: A program of innate immune memory in health and disease. *Science*. 2016 Apr 22;352(6284):aaf1098.
8. Arts RJW, Joosten LAB, Netea MG. The potential role of trained immunity in autoimmune and autoinflammatory disorders. *Front Immunol*. 2018 Feb 20;9:298.
9. George-Gay B, Parker K. Understanding the complete blood count with differential. *J Perianesth Nurs*. 2003 Apr;18(2):96–114; quiz 115.
10. Manley HR, Keightley MC, Lieschke GJ. The neutrophil nucleus: an important influence on neutrophil migration and function. *Front Immunol*. 2018 Dec 4;9:2867.
11. Borregaard N, Sørensen OE, Theilgaard-Mönch K. Neutrophil granules: a library of innate immunity proteins. *Trends Immunol*. 2007 Aug;28(8):340–5.
12. Kolaczowska E, Kubes P. Neutrophil recruitment and function in health and inflammation. *Nat Rev Immunol*. 2013 Mar;13(3):159–75.
13. Phillipson M, Kubes P. The neutrophil in vascular inflammation. *Nat Med*. 2011 Nov 7;17(11):1381–90.
14. Faurschou M, Borregaard N. Neutrophil granules and secretory vesicles in inflammation. *Microbes Infect*. 2003 Nov;5(14):1317–27.
15. Amulic B, Cazalet C, Hayes GL, Metzler KD, Zychlinsky A. Neutrophil function: from mechanisms to disease. *Annu Rev Immunol*. 2012 Jan 3;30:459–89.
16. Soehnlein O, Steffens S, Hidalgo A, Weber C. Neutrophils as protagonists and targets in chronic inflammation. *Nat Rev Immunol*. 2017 Apr;17(4):248–61.
17. el-Hag A, Clark RA. Immunosuppression by activated human neutrophils. Dependence on the myeloperoxidase system. *J Immunol*. 1987 Oct 1;139(7):2406–13.

18. Odobasic D, Kitching AR, Yang Y, O'Sullivan KM, Muljadi RCM, Edgton KL, et al. Neutrophil myeloperoxidase regulates T-cell-driven tissue inflammation in mice by inhibiting dendritic cell function. *Blood*. 2013 May 16;121(20):4195–204.
19. Li Y, Wang W, Yang F, Xu Y, Feng C, Zhao Y. The regulatory roles of neutrophils in adaptive immunity. *Cell Commun Signal*. 2019 Nov 14;17(1):147.
20. de Oliveira S, Rosowski EE, Huttenlocher A. Neutrophil migration in infection and wound repair: going forward in reverse. *Nat Rev Immunol*. 2016 May 27;16(6):378–91.
21. Nourshargh S, Alon R. Leukocyte migration into inflamed tissues. *Immunity*. 2014 Nov 20;41(5):694–707.
22. Weninger W, Biro M, Jain R. Leukocyte migration in the interstitial space of non-lymphoid organs. *Nat Rev Immunol*. 2014 Apr;14(4):232–46.
23. Cartwright GE, Athens JW, Wintrobe MM. Analytical review: the kinetics of granulopoiesis in normal man. *Blood*. 1964 Dec 1;24(6):780–803.
24. Pillay J, den Braber I, Vrisekoop N, Kwast LM, de Boer RJ, Borghans JAM, et al. In vivo labeling with ²H₂O reveals a human neutrophil lifespan of 5.4 days. *Blood*. 2010 Jul 29;116(4):625–7.
25. Kobayashi SD, Malachowa N, DeLeo FR. Influence of microbes on neutrophil life and death. *Front Cell Infect Microbiol*. 2017 May 1;7:159.
26. Ng LG, Ostuni R, Hidalgo A. Heterogeneity of neutrophils. *Nat Rev Immunol*. 2019 Apr;19(4):255–65.
27. Lee WL, Harrison RE, Grinstein S. Phagocytosis by neutrophils. *Microbes Infect*. 2003 Nov;5(14):1299–306.
28. De Ravin SS, Naumann N, Cowen EW, Friend J, Hilligoss D, Marquesen M, et al. Chronic granulomatous disease as a risk factor for autoimmune disease. *J Allergy Clin Immunol*. 2008 Dec;122(6):1097–103.
29. Cale CM, Morton L, Goldblatt D. Cutaneous and other lupus-like symptoms in carriers of X-linked chronic granulomatous disease: incidence and autoimmune serology. *Clin Exp Immunol*. 2007 Apr;148(1):79–84.
30. Sheppard FR, Kelher MR, Moore EE, McLaughlin NJD, Banerjee A, Silliman CC. Structural organization of the neutrophil NADPH oxidase: phosphorylation and translocation during priming and activation. *J Leukoc Biol*. 2005 Nov;78(5):1025–42.
31. Nauseef WM. Assembly of the phagocyte NADPH oxidase. *Histochem Cell Biol*. 2004 Oct;122(4):277–91.
32. Dahlgren C, Karlsson A, Bylund J. Intracellular neutrophil oxidants: from laboratory curiosity to clinical reality. *J Immunol*. 2019 Jun 1;202(11):3127–34.
33. Karlsson A, Nixon JB, McPhail LC. Phorbol myristate acetate induces neutrophil NADPH-oxidase activity by two separate signal transduction pathways: dependent or independent of phosphatidylinositol 3-kinase. *J Leukoc Biol*. 2000 Mar;67(3):396–404.
34. Matute JD, Arias AA, Wright NAM, Wrobel I, Waterhouse CCM, Li XJ, et al. A new genetic subgroup of chronic granulomatous disease with autosomal recessive mutations in p40 phox and selective defects in neutrophil NADPH oxidase activity. *Blood*. 2009 Oct 8;114(15):3309–15.

35. Brinkmann V, Reichard U, Goosmann C, Fauler B, Uhlemann Y, Weiss DS, et al. Neutrophil extracellular traps kill bacteria. *Science*. 2004 Mar 5;303(5663):1532–5.
36. Lightfoot YL, Kaplan MJ. Disentangling the role of neutrophil extracellular traps in rheumatic diseases. *Curr Opin Rheumatol*. 2017;29(1):65–70.
37. Lee KH, Kronbichler A, Park DD-Y, Park Y, Moon H, Kim H, et al. Neutrophil extracellular traps (NETs) in autoimmune diseases: A comprehensive review. *Autoimmun Rev*. 2017 Nov;16(11):1160–73.
38. Fuchs TA, Abed U, Goosmann C, Hurwitz R, Schulze I, Wahn V, et al. Novel cell death program leads to neutrophil extracellular traps. *J Cell Biol*. 2007 Jan 15;176(2):231–41.
39. Yousefi S, Mihalache C, Kozlowski E, Schmid I, Simon HU. Viable neutrophils release mitochondrial DNA to form neutrophil extracellular traps. *Cell Death Differ*. 2009 Nov;16(11):1438–44.
40. Desai J, Mulay SR, Nakazawa D, Anders H-J. Matters of life and death. How neutrophils die or survive along NET release and is “NETosis” = necroptosis? *Cell Mol Life Sci*. 2016 Apr 5;73(11–12):2211–9.
41. Björnsdóttir H, Welin A, Michaëlsson E, Osla V, Berg S, Christenson K, et al. Neutrophil NET formation is regulated from the inside by myeloperoxidase-processed reactive oxygen species. *Free Radic Biol Med*. 2015 Dec;89:1024–35.
42. Papayannopoulos V, Metzler KD, Hakkim A, Zychlinsky A. Neutrophil elastase and myeloperoxidase regulate the formation of neutrophil extracellular traps. *J Cell Biol*. 2010 Nov 1;191(3):677–91.
43. Leshner M, Wang S, Lewis C, Zheng H, Chen XA, Santy L, et al. PAD4 mediated histone hypercitrullination induces heterochromatin decondensation and chromatin unfolding to form neutrophil extracellular trap-like structures. *Front Immunol*. 2012 Oct 4;3:307.
44. Douda DN, Khan MA, Grasemann H, Palaniyar N. SK3 channel and mitochondrial ROS mediate NADPH oxidase-independent NETosis induced by calcium influx. *Proc Natl Acad Sci USA*. 2015 Mar 3;112(9):2817–22.
45. Bonilla FA, Oettgen HC. Adaptive immunity. *J Allergy Clin Immunol*. 2010 Feb;125(2 Suppl 2):S33–40.
46. Wing JB, Tanaka A, Sakaguchi S. Human FOXP3+ regulatory T cell heterogeneity and function in autoimmunity and cancer. *Immunity*. 2019 Feb 19;50(2):302–16.
47. Eibel H, Kraus H, Sic H, Kienzler A-K, Rizzi M. B cell biology: an overview. *Curr Allergy Asthma Rep*. 2014 May;14(5):434.
48. Casadevall A, Pirofski L-A. A new synthesis for antibody-mediated immunity. *Nat Immunol*. 2011 Dec 16;13(1):21–8.
49. Iwasaki A, Medzhitov R. Control of adaptive immunity by the innate immune system. *Nat Immunol*. 2015 Apr;16(4):343–53.
50. Chen L, Flies DB. Molecular mechanisms of T cell co-stimulation and co-inhibition. *Nat Rev Immunol*. 2013 Apr;13(4):227–42.
51. Takashima A, Yao Y. Neutrophil plasticity: acquisition of phenotype and functionality of antigen-presenting cell. *J Leukoc Biol*. 2015 Oct;98(4):489–96.

52. Lin A, Loré K. Granulocytes: New Members of the Antigen-Presenting Cell Family. *Front Immunol.* 2017 Dec 11;8:1781.
53. Mantovani A, Cassatella MA, Costantini C, Jaillon S. Neutrophils in the activation and regulation of innate and adaptive immunity. *Nat Rev Immunol.* 2011 Jul 25;11(8):519–31.
54. Rosales C. Neutrophils at the crossroads of innate and adaptive immunity. *J Leukoc Biol.* 2020 Mar 23;108(1):377–96.
55. Kalyan S, Kabelitz D. When neutrophils meet T cells: beginnings of a tumultuous relationship with underappreciated potential. *Eur J Immunol.* 2014 Mar;44(3):627–33.
56. Pillay J, Tak T, Kamp VM, Koenderman L. Immune suppression by neutrophils and granulocytic myeloid-derived suppressor cells: similarities and differences. *Cell Mol Life Sci.* 2013 Oct;70(20):3813–27.
57. Scapini P, Bazzoni F, Cassatella MA. Regulation of B-cell-activating factor (BAFF)/B lymphocyte stimulator (BLyS) expression in human neutrophils. *Immunol Lett.* 2008 Feb 15;116(1):1–6.
58. Cross A, Bucknall RC, Cassatella MA, Edwards SW, Moots RJ. Synovial fluid neutrophils transcribe and express class II major histocompatibility complex molecules in rheumatoid arthritis. *Arthritis Rheum.* 2003 Oct;48(10):2796–806.
59. Iking-Konert C, Ostendorf B, Sander O, Jost M, Wagner C, Joosten L, et al. Transdifferentiation of polymorphonuclear neutrophils to dendritic-like cells at the site of inflammation in rheumatoid arthritis: evidence for activation by T cells. *Ann Rheum Dis.* 2005 Oct;64(10):1436–42.
60. Tillack K, Breiden P, Martin R, Sospedra M. T lymphocyte priming by neutrophil extracellular traps links innate and adaptive immune responses. *J Immunol.* 2012 Apr 1;188(7):3150–9.
61. Lood C, Blanco LP, Purmalek MM, Carmona-Rivera C, De Ravin SS, Smith CK, et al. Neutrophil extracellular traps enriched in oxidized mitochondrial DNA are interferogenic and contribute to lupus-like disease. *Nat Med.* 2016 Feb;22(2):146–53.
62. Garcia-Romo GS, Caielli S, Vega B, Connolly J, Allantaz F, Xu Z, et al. Netting neutrophils are major inducers of type I IFN production in pediatric systemic lupus erythematosus. *Sci Transl Med.* 2011 Mar 9;3(73):73ra20.
63. Hoffmann MH, Griffiths HR. The dual role of ROS in autoimmune and inflammatory diseases: Evidence from preclinical models. *Free Radic Biol Med.* 2018 Mar 15;125:62–71.
64. Holmdahl R, Sareila O, Olsson LM, Bäckdahl L, Wing K. *Ncf1* polymorphism reveals oxidative regulation of autoimmune chronic inflammation. *Immunol Rev.* 2016 Jan;269(1):228–47.
65. Thomas DC. How the phagocyte NADPH oxidase regulates innate immunity. *Free Radic Biol Med.* 2018 Sep;125:44–52.
66. Rotondo R, Bertolotto M, Barisione G, Astigiano S, Mandruzzato S, Ottonello L, et al. Exocytosis of azurophil and arginase 1-containing granules by activated polymorphonuclear neutrophils is required to inhibit T lymphocyte proliferation. *J Leukoc Biol.* 2011 May;89(5):721–7.

67. Schauer C, Janko C, Munoz LE, Zhao Y, Kienhöfer D, Frey B, et al. Aggregated neutrophil extracellular traps limit inflammation by degrading cytokines and chemokines. *Nat Med.* 2014 May;20(5):511–7.
68. Li Y, Cao X, Liu Y, Zhao Y, Herrmann M. Neutrophil Extracellular Traps Formation and Aggregation Orchestrate Induction and Resolution of Sterile Crystal-Mediated Inflammation. *Front Immunol.* 2018 Jul 6;9:1559.
69. Vono M, Lin A, Norrby-Teglund A, Koup RA, Liang F, Loré K. Neutrophils acquire the capacity for antigen presentation to memory CD4+ T cells in vitro and ex vivo. *Blood.* 2017 Apr 6;129(14):1991–2001.
70. Rose NR, Bona C. Defining criteria for autoimmune diseases (Witebsky's postulates revisited). *Immunol Today.* 1993 Sep;14(9):426–30.
71. Damoiseaux JGMC, Tervaert JWC. The definition of autoimmune disease: are Koch's postulates applicable? *Neth J Med.* 2002 Aug;60(7):266–8.
72. Kamradt T, Mitchison NA. Tolerance and autoimmunity. *N Engl J Med.* 2001 Mar 1;344(9):655–64.
73. Xing Y, Hogquist KA. T-cell tolerance: central and peripheral. *Cold Spring Harb Perspect Biol.* 2012 Jun 1;4(6).
74. Theofilopoulos AN, Kono DH, Baccala R. The multiple pathways to autoimmunity. *Nat Immunol.* 2017 Jun 20;18(7):716–24.
75. Ngo ST, Steyn FJ, McCombe PA. Gender differences in autoimmune disease. *Front Neuroendocrinol.* 2014 Aug;35(3):347–69.
76. Cattalini M, Soliani M, Caparello MC, Cimaz R. Sex differences in pediatric rheumatology. *Clin Rev Allergy Immunol.* 2019 Jun;56(3):293–307.
77. McCombe PA, Greer JM. Sexual dimorphism in the immune system. *The Autoimmune Diseases.* Elsevier; 2014. p. 319–28.
78. Syrett CM, Paneru B, Sandoval-Heglund D, Wang J, Banerjee S, Sindhava V, et al. Altered X-chromosome inactivation in T cells may promote sex-biased autoimmune diseases. *JCI Insight.* 2019 Apr 4;4(7).
79. Brooks WH. X chromosome inactivation and autoimmunity. *Clin Rev Allergy Immunol.* 2010 Aug;39(1):20–9.
80. Hayter SM, Cook MC. Updated assessment of the prevalence, spectrum and case definition of autoimmune disease. *Autoimmun Rev.* 2012 Aug;11(10):754–65.
81. Arbuckle MR, McClain MT, Rubertone MV, Scofield RH, Dennis GJ, James JA, et al. Development of autoantibodies before the clinical onset of systemic lupus erythematosus. *N Engl J Med.* 2003 Oct 16;349(16):1526–33.
82. Ludwig RJ, Vanhoorelbeke K, Leypoldt F, Kaya Z, Bieber K, McLachlan SM, et al. Mechanisms of autoantibody-induced pathology. *Front Immunol.* 2017 May 31;8:603.
83. Nimmerjahn F, Ravetch JV. Fcγ receptors as regulators of immune responses. *Nat Rev Immunol.* 2008 Jan;8(1):34–47.
84. Mayeux R. Biomarkers: potential uses and limitations. *NeuroRx.* 2004 Apr;1(2):182–8.

85. Kastner DL, Aksentijevich I, Goldbach-Mansky R. Autoinflammatory disease reloaded: a clinical perspective. *Cell*. 2010 Mar 19;140(6):784–90.
86. Masters SL, Simon A, Aksentijevich I, Kastner DL. Horror autoinflammaticus: the molecular pathophysiology of autoinflammatory disease (*). *Annu Rev Immunol*. 2009;27:621–68.
87. Szekanecz Z, McInnes IB, Schett G, Szamosi S, Benkő S, Szűcs G. Autoinflammation and autoimmunity across rheumatic and musculoskeletal diseases. *Nat Rev Rheumatol*. 2021 Oct;17(10):585–95.
88. Betrains A, Staels F, Schrijvers R, Meyts I, Humblet-Baron S, De Langhe E, et al. Systemic autoinflammatory disease in adults. *Autoimmun Rev*. 2021 Apr;20(4):102774.
89. Schett G, Elewaut D, McInnes IB, Dayer J-M, Neurath MF. How cytokine networks fuel inflammation: Toward a cytokine-based disease taxonomy. *Nat Med*. 2013 Jul;19(7):822–4.
90. Schett G, McInnes IB, Neurath MF. Reframing Immune-Mediated Inflammatory Diseases through Signature Cytokine Hubs. *N Engl J Med*. 2021 Aug 12;385(7):628–39.
91. Hedrich CM. Shaping the spectrum - From autoinflammation to autoimmunity. *Clin Immunol*. 2016 Apr;165:21–8.
92. Doria A, Zen M, Bettio S, Gatto M, Bassi N, Nalotto L, et al. Autoinflammation and autoimmunity: bridging the divide. *Autoimmun Rev*. 2012 Nov;12(1):22–30.
93. McGonagle D, McDermott MF. A proposed classification of the immunological diseases. *PLoS Med*. 2006 Aug;3(8):e297.
94. Generali E, Bose T, Selmi C, Voncken JW, Damoiseaux JGMC. Nature versus nurture in the spectrum of rheumatic diseases: Classification of spondyloarthritis as autoimmune or autoinflammatory. *Autoimmun Rev*. 2018 Sep;17(9):935–41.
95. Bengtsson AA, Rönnblom L. Systemic lupus erythematosus: still a challenge for physicians. *J Intern Med*. 2017;281(1):52–64.
96. Ravelli A, Martini A. Juvenile idiopathic arthritis. *Lancet*. 2007 Mar 3;369(9563):767–78.
97. Prakken B, Albani S, Martini A. Juvenile idiopathic arthritis. *Lancet*. 2011 Jun 18;377(9783):2138–49.
98. Wirestam L, Arve S, Linge P, Bengtsson AA. Neutrophils-Important Communicators in Systemic Lupus Erythematosus and Antiphospholipid Syndrome. *Front Immunol*. 2019 Nov 22;10:2734.
99. Villanueva E, Yalavarthi S, Berthier CC, Hodgins JB, Khandpur R, Lin AM, et al. Netting neutrophils induce endothelial damage, infiltrate tissues, and expose immunostimulatory molecules in systemic lupus erythematosus. *J Immunol*. 2011 Jul 1;187(1):538–52.
100. Campbell AM, Kashgarian M, Shlomchik MJ. NADPH oxidase inhibits the pathogenesis of systemic lupus erythematosus. *Sci Transl Med*. 2012 Oct 24;4(157):157ra141.

101. Jarvis JN, Petty HR, Tang Y, Frank MB, Tessier PA, Dozmorov I, et al. Evidence for chronic, peripheral activation of neutrophils in polyarticular juvenile rheumatoid arthritis. *Arthritis Res Ther*. 2006;8(5):R154.
102. Ramanathan K, Glaser A, Lythgoe H, Ong J, Beresford MW, Midgley A, et al. Neutrophil activation signature in juvenile idiopathic arthritis indicates the presence of low-density granulocytes. *Rheumatology*. 2018 Mar 1;57(3):488–98.
103. Saxena N, Aggarwal A, Misra R. Elevated concentrations of monocyte derived cytokines in synovial fluid of children with enthesitis related arthritis and polyarticular types of juvenile idiopathic arthritis. *J Rheumatol*. 2005 Jul;32(7):1349–53.
104. Hagelberg S, Andersson-Gäre B, Fasth A, Månsson B, Enman Y. *Barnreumatologi*. 1st ed. Poland: Pozkal; 2008.
105. Petty RE, Southwood TR, Manners P, Baum J, Glass DN, Goldenberg J, et al. International League of Associations for Rheumatology classification of juvenile idiopathic arthritis: second revision, Edmonton, 2001. *J Rheumatol*. 2004 Feb;31(2):390–2.
106. Petty RE, Southwood TR, Baum J, Bhattay E, Glass DN, Manners P, et al. Revision of the proposed classification criteria for juvenile idiopathic arthritis: Durban, 1997. *J Rheumatol*. 1998 Oct;25(10):1991–4.
107. Wood, PHN. Nomenclature and classification of arthritis in children. *The Care of Rheumatic Children*. 1978;
108. Brewer EJ, Bass J, Baum J, Cassidy JT, Fink C, Jacobs J, et al. Current proposed revision of JRA Criteria. JRA Criteria Subcommittee of the Diagnostic and Therapeutic Criteria Committee of the American Rheumatism Section of The Arthritis Foundation. *Arthritis Rheum*. 1977 Mar;20(2 Suppl):195–9.
109. Nigrovic PA, Colbert RA, Holers VM, Ozen S, Ruperto N, Thompson SD, et al. Biological classification of childhood arthritis: roadmap to a molecular nomenclature. *Nat Rev Rheumatol*. 2021 May;17(5):257–69.
110. Ravelli A, Varnier GC, Oliveira S, Castell E, Arguedas O, Magnani A, et al. Antinuclear antibody-positive patients should be grouped as a separate category in the classification of juvenile idiopathic arthritis. *Arthritis Rheum*. 2011 Jan;63(1):267–75.
111. Berntson L, Andersson Gäre B, Fasth A, Herlin T, Kristinsson J, Lahdenne P, et al. Incidence of juvenile idiopathic arthritis in the Nordic countries. A population based study with special reference to the validity of the ILAR and EULAR criteria. *J Rheumatol*. 2003 Oct;30(10):2275–82.
112. Berthold E, Månsson B, Kahn R. Outcome in juvenile idiopathic arthritis: a population-based study from Sweden. *Arthritis Res Ther*. 2019 Oct 28;21(1):218.
113. Thierry S, Fautrel B, Lemelle I, Guillemin F. Prevalence and incidence of juvenile idiopathic arthritis: a systematic review. *Joint Bone Spine*. 2014 Mar;81(2):112–7.
114. Palman J, Shoop-Worrall S, Hyrich K, McDonagh JE. Update on the epidemiology, risk factors and disease outcomes of Juvenile idiopathic arthritis. *Best Pract Res Clin Rheumatol*. 2018 Nov 19;32(2):206–22.

115. Macaubas C, Nguyen K, Milojevic D, Park JL, Mellins ED. Oligoarticular and polyarticular JIA: epidemiology and pathogenesis. *Nat Rev Rheumatol*. 2009 Nov;5(11):616–26.
116. Clarke SLN, Sen ES, Ramanan AV. Juvenile idiopathic arthritis-associated uveitis. *Pediatr Rheumatol Online J*. 2016 Apr 27;14(1):27.
117. Rypdal V, Glerup M, Songstad NT, Bertelsen G, Christoffersen T, Arnstad ED, et al. Uveitis in Juvenile Idiopathic Arthritis: 18-year Outcome in the Population-based Nordic Cohort Study. *Ophthalmology*. 2020 Aug 28;
118. Saurenmann RK, Levin AV, Feldman BM, Rose JB, Laxer RM, Schneider R, et al. Prevalence, risk factors, and outcome of uveitis in juvenile idiopathic arthritis: a long-term followup study. *Arthritis Rheum*. 2007 Feb;56(2):647–57.
119. Prahalad S, McCracken CE, Ponder LA, Angeles-Han ST, Rouster Stevens KA, Vogler LB, et al. Familial autoimmunity in the Childhood Arthritis and Rheumatology Research Alliance registry. *Pediatr Rheumatol Online J*. 2016 Mar 10;14(1):14.
120. Cobb JE, Hinks A, Thomson W. The genetics of juvenile idiopathic arthritis: current understanding and future prospects. *Rheumatology*. 2014 Apr;53(4):592–9.
121. Hersh AO, Prahalad S. Immunogenetics of juvenile idiopathic arthritis: A comprehensive review. *J Autoimmun*. 2015 Nov;64:113–24.
122. Jiang K, Zhu L, Buck MJ, Chen Y, Carrier B, Liu T, et al. Disease-Associated Single-Nucleotide Polymorphisms From Noncoding Regions in Juvenile Idiopathic Arthritis Are Located Within or Adjacent to Functional Genomic Elements of Human Neutrophils and CD4+ T Cells. *Arthritis Rheumatol*. 2015 Jul;67(7):1966–77.
123. Silverman ED, Isacovics B, Petsche D, Laxer RM. Synovial fluid cells in juvenile arthritis: evidence of selective T cell migration to inflamed tissue. *Clin Exp Immunol*. 1993 Jan;91(1):90–5.
124. Ferguson ID, Griffin P, Michel JJ, Yano H, Gaffen SL, Mueller RG, et al. T Cell Receptor-Independent, CD31/IL-17A-Driven Inflammatory Axis Shapes Synovitis in Juvenile Idiopathic Arthritis. *Front Immunol*. 2018 Aug 6;9:1802.
125. Wedderburn LR, Robinson N, Patel A, Varsani H, Woo P. Selective recruitment of polarized T cells expressing CCR5 and CXCR3 to the inflamed joints of children with juvenile idiopathic arthritis. *Arthritis Rheum*. 2000 Apr;43(4):765–74.
126. Gregorio A, Gambini C, Gerloni V, Parafioriti A, Sormani MP, Gregorio S, et al. Lymphoid neogenesis in juvenile idiopathic arthritis correlates with ANA positivity and plasma cells infiltration. *Rheumatology*. 2007 Feb;46(2):308–13.
127. Corcione A, Ferlito F, Gattorno M, Gregorio A, Pistorio A, Gastaldi R, et al. Phenotypic and functional characterization of switch memory B cells from patients with oligoarticular juvenile idiopathic arthritis. *Arthritis Res Ther*. 2009 Oct 5;11(5):R150.
128. Nistala K, Moncrieffe H, Newton KR, Varsani H, Hunter P, Wedderburn LR. Interleukin-17-producing T cells are enriched in the joints of children with arthritis, but have a reciprocal relationship to regulatory T cell numbers. *Arthritis Rheum*. 2008 Mar;58(3):875–87.

129. Agarwal S, Misra R, Aggarwal A. Interleukin 17 levels are increased in juvenile idiopathic arthritis synovial fluid and induce synovial fibroblasts to produce proinflammatory cytokines and matrix metalloproteinases. *J Rheumatol*. 2008 Mar;35(3):515–9.
130. Zaripova LN, Midgley A, Christmas SE, Beresford MW, Baidam EM, Oldershaw RA. Juvenile idiopathic arthritis: from aetiopathogenesis to therapeutic approaches. *Pediatr Rheumatol Online J*. 2021 Aug 23;19(1):135.
131. Julé AM, Hoyt KJ, Wei K, Gutierrez-Arcelus M, Taylor ML, Ng J, et al. Th1 polarization defines the synovial fluid T cell compartment in oligoarticular juvenile idiopathic arthritis. *JCI Insight*. 2021 Sep 22;
132. de Kleer IM, Wedderburn LR, Taams LS, Patel A, Varsani H, Klein M, et al. CD4+CD25bright regulatory T cells actively regulate inflammation in the joints of patients with the remitting form of juvenile idiopathic arthritis. *J Immunol*. 2004 May 15;172(10):6435–43.
133. Pesenacker AM, Wedderburn LR. T regulatory cells in childhood arthritis--novel insights. *Expert Rev Mol Med*. 2013 Dec 3;15:e13.
134. Mahmud SA, Binstadt BA. Autoantibodies in the pathogenesis, diagnosis, and prognosis of juvenile idiopathic arthritis. *Front Immunol*. 2018;9:3168.
135. Campanilho-Marques R, Bogas M, Ramos F, Santos MJ, Fonseca JE. Prognostic value of antinuclear antibodies in juvenile idiopathic arthritis and anterior uveitis. Results from a systematic literature review. *Acta Reumatol Port*. 2014 Jun;39(2):116–22.
136. Heiligenhaus A, Niewerth M, Ganser G, Heinz C, Minden K, German Uveitis in Childhood Study Group. Prevalence and complications of uveitis in juvenile idiopathic arthritis in a population-based nation-wide study in Germany: suggested modification of the current screening guidelines. *Rheumatology*. 2007 Jun;46(6):1015–9.
137. Nordal EB, Songstad NT, Berntson L, Moen T, Straume B, Rygg M. Biomarkers of chronic uveitis in juvenile idiopathic arthritis: predictive value of antihistone antibodies and antinuclear antibodies. *J Rheumatol*. 2009 Aug;36(8):1737–43.
138. Nordal E, Rypdal V, Christoffersen T, Aalto K, Berntson L, Fasth A, et al. Incidence and predictors of Uveitis in juvenile idiopathic arthritis in a Nordic long-term cohort study. *Pediatr Rheumatol Online J*. 2017 Aug 18;15(1):66.
139. Jarvis JN, Jiang K, Petty HR, Centola M. Neutrophils: the forgotten cell in JIA disease pathogenesis. *Pediatr Rheumatol Online J*. 2007 Jun 13;5:13.
140. Wulffraat NM, Haas PJ, Frosch M, De Kleer IM, Vogl T, Brinkman DMC, et al. Myeloid related protein 8 and 14 secretion reflects phagocyte activation and correlates with disease activity in juvenile idiopathic arthritis treated with autologous stem cell transplantation. *Ann Rheum Dis*. 2003 Mar;62(3):236–41.
141. Martínez Del Val E, Rodríguez Martínez A, Sánchez Becerra V, Cruz Rojo J, Enríquez Merayo E, Barral Mena E, et al. [Characteristics of synovial fluid in patients with juvenile idiopathic arthritis]. *An Pediatr (Barc)*. 2019 Oct;91(4):244–50.

142. Schmidt T, Berthold E, Arve-Butler S, Gullstrand B, Mossberg A, Kahn F, et al. Children with oligoarticular juvenile idiopathic arthritis have skewed synovial monocyte polarization pattern with functional impairment—a distinct inflammatory pattern for oligoarticular juvenile arthritis. *Arthritis Res Ther*. 2020 Aug 12;22(1):186.
143. de Jager W, Hoppenreijns EPAH, Wulffraat NM, Wedderburn LR, Kuis W, Prakken BJ. Blood and synovial fluid cytokine signatures in patients with juvenile idiopathic arthritis: a cross-sectional study. *Ann Rheum Dis*. 2007 May;66(5):589–98.
144. Metzemaekers M, Malengier-Devlies B, Yu K, Vandendriessche S, Yserbyt J, Matthys P, et al. Synovial fluid neutrophils from patients with juvenile idiopathic arthritis display a hyperactivated phenotype. *Arthritis Rheumatol*. 2020 Dec 2;
145. Murphy G, Isenberg D. Effect of gender on clinical presentation in systemic lupus erythematosus. *Rheumatology*. 2013 Dec;52(12):2108–15.
146. Hochberg MC. Updating the American college of rheumatology revised criteria for the classification of systemic lupus erythematosus. *Arthritis & Rheumatism*. 1997 Sep;40(9):1725–1725.
147. Tan EM, Cohen AS, Fries JF, Masi AT, McShane DJ, Rothfield NF, et al. The 1982 revised criteria for the classification of systemic lupus erythematosus. *Arthritis Rheum*. 1982 Nov;25(11):1271–7.
148. Fava A, Petri M. Systemic lupus erythematosus: Diagnosis and clinical management. *J Autoimmun*. 2019 Jan;96:1–13.
149. Bertias GK, Pamfil C, Fanouriakis A, Boumpas DT. Diagnostic criteria for systemic lupus erythematosus: has the time come? *Nat Rev Rheumatol*. 2013 Nov;9(11):687–94.
150. Petri M, Orbai A-M, Alarcón GS, Gordon C, Merrill JT, Fortin PR, et al. Derivation and validation of the Systemic Lupus International Collaborating Clinics classification criteria for systemic lupus erythematosus. *Arthritis Rheum*. 2012 Aug;64(8):2677–86.
151. Aringer M, Costenbader K, Daikh D, Brinks R, Mosca M, Ramsey-Goldman R, et al. 2019 European League Against Rheumatism/American College of Rheumatology classification criteria for systemic lupus erythematosus. *Ann Rheum Dis*. 2019 Sep;78(9):1151–9.
152. Aringer M. EULAR/ACR classification criteria for SLE. *Semin Arthritis Rheum*. 2019 Dec;49(3S):S14–7.
153. Danchenko N, Satia JA, Anthony MS. Epidemiology of systemic lupus erythematosus: a comparison of worldwide disease burden. *Lupus*. 2006;15(5):308–18.
154. Somers EC, Marder W, Cagnoli P, Lewis EE, Deguire P, Gordon C, et al. Population-based incidence and prevalence of systemic lupus erythematosus: The Michigan Lupus Epidemiology & Surveillance (MILES) Program. *Arthritis Rheum*. 2013 Oct 24;
155. Rees F, Doherty M, Grainge MJ, Lanyon P, Zhang W. The worldwide incidence and prevalence of systemic lupus erythematosus: a systematic review of epidemiological studies. *Rheumatology*. 2017 Nov 1;56(11):1945–61.

156. Simard JF, Sjöwall C, Rönnblom L, Jönsen A, Svenungsson E. Systemic lupus erythematosus prevalence in Sweden in 2010: what do national registers say? *Arthritis Care Res (Hoboken)*. 2014 Nov;66(11):1710–7.
157. Ståhl-Hallengren C, Jönsen A, Nived O, Sturfelt G. Incidence studies of systemic lupus erythematosus in Southern Sweden: increasing age, decreasing frequency of renal manifestations and good prognosis. *J Rheumatol*. 2000 Mar;27(3):685–91.
158. Dörner T, Furie R. Novel paradigms in systemic lupus erythematosus. *Lancet*. 2019 Jun 8;393(10188):2344–58.
159. Rai R, Chauhan SK, Singh VV, Rai M, Rai G. RNA-seq Analysis Reveals Unique Transcriptome Signatures in Systemic Lupus Erythematosus Patients with Distinct Autoantibody Specificities. *PLoS One*. 2016 Nov 11;11(11):e0166312.
160. Banchereau R, Hong S, Cantarel B, Baldwin N, Baisch J, Edens M, et al. Personalized Immunomonitoring Uncovers Molecular Networks that Stratify Lupus Patients. *Cell*. 2016 Apr 21;165(3):551–65.
161. Lanata CM, Paranjpe I, Nititham J, Taylor KE, Gianfrancesco M, Paranjpe M, et al. A phenotypic and genomics approach in a multi-ethnic cohort to subtype systemic lupus erythematosus. *Nat Commun*. 2019 Aug 29;10(1):3902.
162. Ruiz-Irastorza G, Crowther M, Branch W, Khamashta MA. Antiphospholipid syndrome. *Lancet*. 2010 Oct 30;376(9751):1498–509.
163. Sammaritano LR. Antiphospholipid syndrome. *Best Pract Res Clin Rheumatol*. 2020 Feb;34(1):101463.
164. Meroni PL, Borghi MO, Raschi E, Tedesco F. Pathogenesis of antiphospholipid syndrome: understanding the antibodies. *Nat Rev Rheumatol*. 2011 Jun;7(6):330–9.
165. Pons-Estel GJ, Andreoli L, Scanzi F, Cervera R, Tincani A. The antiphospholipid syndrome in patients with systemic lupus erythematosus. *J Autoimmun*. 2017 Jan;76:10–20.
166. Cervera R, Piette J-C, Font J, Khamashta MA, Shoenfeld Y, Camps MT, et al. Antiphospholipid syndrome: clinical and immunologic manifestations and patterns of disease expression in a cohort of 1,000 patients. *Arthritis Rheum*. 2002 Apr;46(4):1019–27.
167. Radic M, Pattanaik D. Cellular and Molecular Mechanisms of Anti-Phospholipid Syndrome. *Front Immunol*. 2018 May 7;9:969.
168. Deapen D, Escalante A, Weinrib L, Horwitz D, Bachman B, Roy-Burman P, et al. A revised estimate of twin concordance in systemic lupus erythematosus. *Arthritis Rheum*. 1992 Mar;35(3):311–8.
169. Wakeland EK, Liu K, Graham RR, Behrens TW. Delineating the genetic basis of systemic lupus erythematosus. *Immunity*. 2001 Sep;15(3):397–408.
170. Bentham J, Morris DL, Graham DSC, Pinder CL, Tomblinson P, Behrens TW, et al. Genetic association analyses implicate aberrant regulation of innate and adaptive immunity genes in the pathogenesis of systemic lupus erythematosus. *Nat Genet*. 2015 Dec;47(12):1457–64.
171. Truedsson L, Bengtsson AA, Sturfelt G. Complement deficiencies and systemic lupus erythematosus. *Autoimmunity*. 2007 Dec;40(8):560–6.

172. Tsokos GC, Lo MS, Costa Reis P, Sullivan KE. New insights into the immunopathogenesis of systemic lupus erythematosus. *Nat Rev Rheumatol.* 2016 Nov 22;12(12):716–30.
173. Cunninghame Graham DS, Morris DL, Bhangale TR, Criswell LA, Syvänen A-C, Rönnblom L, et al. Association of NCF2, IKZF1, IRF8, IFIH1, and TYK2 with systemic lupus erythematosus. *PLoS Genet.* 2011 Oct 27;7(10):e1002341.
174. Jacob CO, Eisenstein M, Dinauer MC, Ming W, Liu Q, John S, et al. Lupus-associated causal mutation in neutrophil cytosolic factor 2 (NCF2) brings unique insights to the structure and function of NADPH oxidase. *Proc Natl Acad Sci USA.* 2012 Jan 10;109(2):E59-67.
175. Olsson LM, Johansson ÅC, Gullstrand B, Jönsen A, Saevarsdottir S, Rönnblom L, et al. A single nucleotide polymorphism in the NCF1 gene leading to reduced oxidative burst is associated with systemic lupus erythematosus. *Ann Rheum Dis.* 2017 Jun 12;
176. Reid S, Alexsson A, Frodlund M, Morris D, Sandling JK, Bolin K, et al. High genetic risk score is associated with early disease onset, damage accrual and decreased survival in systemic lupus erythematosus. *Ann Rheum Dis.* 2020 Mar;79(3):363–9.
177. Elkon KB. Review: cell death, nucleic acids, and immunity: inflammation beyond the grave. *Arthritis Rheumatol.* 2018 Jun;70(6):805–16.
178. Colonna L, Lood C, Elkon KB. Beyond apoptosis in lupus. *Curr Opin Rheumatol.* 2014 Sep;26(5):459–66.
179. Ren Y, Tang J, Mok MY, Chan AWK, Wu A, Lau CS. Increased apoptotic neutrophils and macrophages and impaired macrophage phagocytic clearance of apoptotic neutrophils in systemic lupus erythematosus. *Arthritis Rheum.* 2003 Oct;48(10):2888–97.
180. Janko C, Schorn C, Grossmayer GE, Frey B, Herrmann M, Gaipf US, et al. Inflammatory clearance of apoptotic remnants in systemic lupus erythematosus (SLE). *Autoimmun Rev.* 2008 Oct;8(1):9–12.
181. Möckel T, Basta F, Weinmann-Menke J, Schwarting A. B cell activating factor (BAFF): Structure, functions, autoimmunity and clinical implications in Systemic Lupus Erythematosus (SLE). *Autoimmun Rev.* 2021 Feb;20(2):102736.
182. Vincent FB, Morand EF, Schneider P, Mackay F. The BAFF/APRIL system in SLE pathogenesis. *Nat Rev Rheumatol.* 2014 Jun;10(6):365–73.
183. Kawai M, Szegedi G. Immune complex clearance by monocytes and macrophages in systemic lupus erythematosus. *Autoimmun Rev.* 2007 Aug;6(7):497–502.
184. Koffler D, Agnello V, Thoburn R, Kunkel HG. Systemic lupus erythematosus: prototype of immune complex nephritis in man. *J Exp Med.* 1971 Sep 1;134(3):169–79.
185. Rose T, Dörner T. Drivers of the immunopathogenesis in systemic lupus erythematosus. *Best Pract Res Clin Rheumatol.* 2017 Jun;31(3):321–33.
186. Pisetsky DS, Lipsky PE. New insights into the role of antinuclear antibodies in systemic lupus erythematosus. *Nat Rev Rheumatol.* 2020 Oct;16(10):565–79.

187. Bengtsson AA, Rönnblom L. Role of interferons in SLE. *Best Pract Res Clin Rheumatol*. 2017 Jun;31(3):415–28.
188. Hagberg N, Rönnblom L. Systemic Lupus Erythematosus--A Disease with A Dysregulated Type I Interferon System. *Scand J Immunol*. 2015 Sep;82(3):199–207.
189. Bennett L, Palucka AK, Arce E, Cantrell V, Borvak J, Banchereau J, et al. Interferon and granulopoiesis signatures in systemic lupus erythematosus blood. *J Exp Med*. 2003 Mar 17;197(6):711–23.
190. van den Hoogen LL, van Roon JAG, Mertens JS, Wienke J, Lopes AP, de Jager W, et al. Galectin-9 is an easy to measure biomarker for the interferon signature in systemic lupus erythematosus and antiphospholipid syndrome. *Ann Rheum Dis*. 2018 Sep 5;77(12):1810–4.
191. Coit P, Yalavarthi S, Ognenovski M, Zhao W, Hasni S, Wren JD, et al. Epigenome profiling reveals significant DNA demethylation of interferon signature genes in lupus neutrophils. *J Autoimmun*. 2015 Apr;58:59–66.
192. Teruel M, Sawalha AH. Epigenetic Variability in Systemic Lupus Erythematosus: What We Learned from Genome-Wide DNA Methylation Studies. *Curr Rheumatol Rep*. 2017 Jun;19(6):32.
193. Fresneda Alarcon M, McLaren Z, Wright HL. Neutrophils in the pathogenesis of rheumatoid arthritis and systemic lupus erythematosus: same foe different M.O. *Front Immunol*. 2021 Mar 4;12:649693.
194. Smith CK, Kaplan MJ. The role of neutrophils in the pathogenesis of systemic lupus erythematosus. *Curr Opin Rheumatol*. 2015 Sep;27(5):448–53.
195. Silvestre-Roig C, Hidalgo A, Soehnlein O. Neutrophil heterogeneity: implications for homeostasis and pathogenesis. *Blood*. 2016 May 5;127(18):2173–81.
196. Hu Z, Jiang K, Frank MB, Chen Y, Jarvis JN. Complexity and specificity of the neutrophil transcriptomes in juvenile idiopathic arthritis. *Sci Rep*. 2016 Jun 7;6:27453.
197. Hu Z, Jiang K, Frank MB, Chen Y, Jarvis JN. Modeling transcriptional rewiring in neutrophils through the course of treated juvenile idiopathic arthritis. *Sci Rep*. 2018 May 17;8(1):7805.
198. Schulze zur Wiesch A, Foell D, Frosch M, Vogl T, Sorg C, Roth J. Myeloid related proteins MRP8/MRP14 may predict disease flares in juvenile idiopathic arthritis. *Clin Exp Rheumatol*. 2004 Jun;22(3):368–73.
199. Foell D, Wittkowski H, Hammerschmidt I, Wulffraat N, Schmeling H, Frosch M, et al. Monitoring neutrophil activation in juvenile rheumatoid arthritis by S100A12 serum concentrations. *Arthritis Rheum*. 2004 Apr;50(4):1286–95.
200. Frosch M, Strey A, Vogl T, Wulffraat NM, Kuis W, Sunderkötter C, et al. Myeloid-related proteins 8 and 14 are specifically secreted during interaction of phagocytes and activated endothelium and are useful markers for monitoring disease activity in pauciarticular-onset juvenile rheumatoid arthritis. *Arthritis Rheum*. 2000 Mar;43(3):628–37.
201. Backlund M, Venge P, Berntson L. A cross-sectional cohort study of the activity and turnover of neutrophil granulocytes in juvenile idiopathic arthritis. *Pediatr Rheumatol Online J*. 2021 Jun 30;19(1):102.

202. Perera C, McNeil HP, Geczy CL. S100 Calgranulins in inflammatory arthritis. *Immunol Cell Biol.* 2010 Jan;88(1):41–9.
203. Tardif MR, Chapeton-Montes JA, Posvandzic A, Pagé N, Gilbert C, Tessier PA. Secretion of S100A8, S100A9, and S100A12 by neutrophils involves reactive oxygen species and potassium efflux. *J Immunol Res.* 2015 Dec 30;2015:296149.
204. Wang S, Song R, Wang Z, Jing Z, Wang S, Ma J. S100A8/A9 in Inflammation. *Front Immunol.* 2018 Jun 11;9:1298.
205. Sowinska A, Rensing M, Klevenvall L, Neog M, Lundbäck P, Harris HE. Cleavage of HMGB1 by Proteolytic Enzymes Associated with Inflammatory Conditions. *Front Immunol.* 2020 Dec 16;11:448262.
206. Wright HL, Lyon M, Chapman EA, Moots RJ, Edwards SW. Rheumatoid arthritis synovial fluid neutrophils drive inflammation through production of chemokines, reactive oxygen species, and neutrophil extracellular traps. *Front Immunol.* 2020;11:584116.
207. Schmidt-Acevedo S, Pérez-Romano B, Ruiz-Argüelles A. “LE cells” result from phagocytosis of apoptotic bodies induced by antinuclear antibodies. *J Autoimmun.* 2000 Aug;15(1):15–20.
208. Hargraves MM, Richmond H, Morton R. Presentation of two bone marrow elements; the tart cell and the L.E. cell. *Proc Staff Meet Mayo Clin.* 1948 Jan 21;23(2):25–8.
209. Hepburn AL. The LE cell. *Rheumatology.* 2001 Jul;40(7):826–7.
210. Chauhan SK, Rai R, Singh VV, Rai M, Rai G. Differential clearance mechanisms, neutrophil extracellular trap degradation and phagocytosis, are operative in systemic lupus erythematosus patients with distinct autoantibody specificities. *Immunol Lett.* 2015 Dec;168(2):254–9.
211. Brandt L, Hedberg H. Impaired phagocytosis by peripheral blood granulocytes in systemic lupus erythematosus. *Scand J Haematol.* 1969;6(5):348–53.
212. Courtney PA, Crockard AD, Williamson K, Irvine AE, Kennedy RJ, Bell AL. Increased apoptotic peripheral blood neutrophils in systemic lupus erythematosus: relations with disease activity, antibodies to double stranded DNA, and neutropenia. *Ann Rheum Dis.* 1999 May;58(5):309–14.
213. Hakkim A, Fürnrohr BG, Amann K, Laube B, Abed UA, Brinkmann V, et al. Impairment of neutrophil extracellular trap degradation is associated with lupus nephritis. *Proc Natl Acad Sci USA.* 2010 May 25;107(21):9813–8.
214. Leffler J, Martin M, Gullstrand B, Tydén H, Lood C, Truedsson L, et al. Neutrophil extracellular traps that are not degraded in systemic lupus erythematosus activate complement exacerbating the disease. *J Immunol.* 2012 Apr 1;188(7):3522–31.
215. van der Linden M, van den Hoogen LL, Westerlaken GHA, Fritsch-Stork RDE, van Roon JAG, Radstake TRDJ, et al. Neutrophil extracellular trap release is associated with antinuclear antibodies in systemic lupus erythematosus and anti-phospholipid syndrome. *Rheumatology.* 2018 Jul 1;57(7):1228–34.
216. Skopelja-Gardner S, Jones JD, Rigby WFC. “NETtling” the host: Breaking of tolerance in chronic inflammation and chronic infection. *J Autoimmun.* 2018 Mar;88:1–10.

217. Gestermann N, Di Domizio J, Lande R, Demaria O, Frasca L, Feldmeyer L, et al. Netting neutrophils activate autoreactive B cells in lupus. *J Immunol*. 2018 May 15;200(10):3364–71.
218. Lande R, Ganguly D, Facchinetti V, Frasca L, Conrad C, Gregorio J, et al. Neutrophils activate plasmacytoid dendritic cells by releasing self-DNA-peptide complexes in systemic lupus erythematosus. *Sci Transl Med*. 2011 Mar 9;3(73):73ra19.
219. Muller S, Radic M. Oxidation and mitochondrial origin of NET DNA in the pathogenesis of lupus. *Nat Med*. 2016 Feb;22(2):126–7.
220. Caielli S, Athale S, Domic B, Murat E, Chandra M, Bancheureau R, et al. Oxidized mitochondrial nucleoids released by neutrophils drive type I interferon production in human lupus. *J Exp Med*. 2016 May 2;213(5):697–713.
221. Fuchs TA, Brill A, Duerschmied D, Schatzberg D, Monestier M, Myers DD, et al. Extracellular DNA traps promote thrombosis. *Proc Natl Acad Sci USA*. 2010 Sep 7;107(36):15880–5.
222. Laridan E, Martinod K, De Meyer SF. Neutrophil extracellular traps in arterial and venous thrombosis. *Semin Thromb Hemost*. 2019 Feb;45(1):86–93.
223. Lood C, Arve S, Ledbetter J, Elkon KB. TLR7/8 activation in neutrophils impairs immune complex phagocytosis through shedding of FcγRIIA. *J Exp Med*. 2017 Jul 3;214(7):2103–19.
224. Behnen M, Leschczyk C, Möller S, Batel T, Klinger M, Solbach W, et al. Immobilized immune complexes induce neutrophil extracellular trap release by human neutrophil granulocytes via FcγRIIIB and Mac-1. *J Immunol*. 2014 Aug 15;193(4):1954–65.
225. Chen K, Nishi H, Travers R, Tsuboi N, Martinod K, Wagner DD, et al. Endocytosis of soluble immune complexes leads to their clearance by FcγRIIIB but induces neutrophil extracellular traps via FcγRIIA in vivo. *Blood*. 2012 Nov 22;120(22):4421–31.
226. Carmona-Rivera C, Kaplan MJ. Low-density granulocytes: a distinct class of neutrophils in systemic autoimmunity. *Semin Immunopathol*. 2013 Jul;35(4):455–63.
227. Hacbarth E, Kajdacsy-Balla A. Low density neutrophils in patients with systemic lupus erythematosus, rheumatoid arthritis, and acute rheumatic fever. *Arthritis Rheum*. 1986 Nov;29(11):1334–42.
228. Denny MF, Yalavarthi S, Zhao W, Thacker SG, Anderson M, Sandy AR, et al. A distinct subset of proinflammatory neutrophils isolated from patients with systemic lupus erythematosus induces vascular damage and synthesizes type I IFNs. *J Immunol*. 2010 Mar 15;184(6):3284–97.
229. Kienhöfer D, Hahn J, Stoof J, Csepregi JZ, Reinwald C, Urbonaviciute V, et al. Experimental lupus is aggravated in mouse strains with impaired induction of neutrophil extracellular traps. *JCI Insight*. 2017 May 18;2(10).
230. Gordon RA, Herter JM, Rosetti F, Campbell AM, Nishi H, Kashgarian M, et al. Lupus and proliferative nephritis are PAD4 independent in murine models. *JCI Insight*. 2017 May 18;2(10).

231. Urbonaviciute V, Luo H, Sjöwall C, Bengtsson A, Holmdahl R. Low production of reactive oxygen species drives systemic lupus erythematosus. *Trends Mol Med*. 2019 Jul 11;25(10):826–35.
232. Bengtsson AA, Pettersson Å, Wichert S, Gullstrand B, Hansson M, Hellmark T, et al. Low production of reactive oxygen species in granulocytes is associated with organ damage in systemic lupus erythematosus. *Arthritis Res Ther*. 2014 Jun 5;16(3):R120.
233. Olsson LM, Lindqvist A-K, Källberg H, Padyukov L, Burkhardt H, Alfredsson L, et al. A case-control study of rheumatoid arthritis identifies an associated single nucleotide polymorphism in the NCF4 gene, supporting a role for the NADPH-oxidase complex in autoimmunity. *Arthritis Res Ther*. 2007;9(5):R98.
234. Zhao J, Ma J, Deng Y, Kelly JA, Kim K, Bang S-Y, et al. A missense variant in NCF1 is associated with susceptibility to multiple autoimmune diseases. *Nat Genet*. 2017 Mar;49(3):433–7.
235. Zhong J, Olsson LM, Urbonaviciute V, Yang M, Bäckdahl L, Holmdahl R. Association of NOX2 subunits genetic variants with autoimmune diseases. *Free Radic Biol Med*. 2018 Mar 9;125:72–80.
236. Kelkka T, Kienhöfer D, Hoffmann M, Linja M, Wing K, Sareila O, et al. Reactive oxygen species deficiency induces autoimmunity with type 1 interferon signature. *Antioxid Redox Signal*. 2014 Dec 1;21(16):2231–45.
237. Jacob CO, Yu N, Yoo D-G, Perez-Zapata LJ, Barbu EA, Kaplan MJ, et al. Haploinsufficiency of NADPH Oxidase Subunit Neutrophil Cytosolic Factor 2 Is Sufficient to Accelerate Full-Blown Lupus in NZM 2328 Mice. *Arthritis Rheumatol*. 2017 Jul 5;69(8):1647–60.
238. Hahn J, Euler M, Kilgus E, Kienhöfer D, Stoof J, Knopf J, et al. NOX2 mediates quiescent handling of dead cell remnants in phagocytes. *Redox Biol*. 2019 Jul 20;26:101279.
239. Bagaitkar J, Huang J, Zeng MY, Pech NK, Monlish DA, Perez-Zapata LJ, et al. NADPH oxidase activation regulates apoptotic neutrophil clearance by murine macrophages. *Blood*. 2018 Apr 4;131(21):2367–78.
240. Eloranta M-L, Lövgren T, Finke D, Mathsson L, Rönnelid J, Kastner B, et al. Regulation of the interferon-alpha production induced by RNA-containing immune complexes in plasmacytoid dendritic cells. *Arthritis Rheum*. 2009 Aug;60(8):2418–27.
241. Tao L, Lemoff A, Wang G, Zarek C, Lowe A, Yan N, et al. Reactive oxygen species oxidize STING and suppress interferon production. *Elife*. 2020 Sep 4;9.
242. Petersson J, Askman S, Pettersson Å, Wichert S, Hellmark T, Johansson ÅCM, et al. Bone Marrow Neutrophils of Multiple Myeloma Patients Exhibit Myeloid-Derived Suppressor Cell Activity. *J Immunol Res*. 2021 Aug 6;2021:6344344.
243. Aarts CEM, Hiemstra IH, Béguin EP, Hoogendijk AJ, Bouchmal S, van Houdt M, et al. Activated neutrophils exert myeloid-derived suppressor cell activity damaging T cells beyond repair. *Blood Adv*. 2019 Nov 26;3(22):3562–74.
244. Wei J, Zhang M, Zhou J. Myeloid-derived suppressor cells in major depression patients suppress T-cell responses through the production of reactive oxygen species. *Psychiatry Res*. 2015 Aug 30;228(3):695–701.

245. Zoschke DC, Staite ND. Suppression of human lymphocyte proliferation by activated neutrophils or H₂O₂: Surviving cells have an altered T helper/T suppressor ratio and an increased resistance to secondary oxidant exposure. *Clin Immunol Immunopathol.* 1987 Feb;42(2):160–70.
246. Rigoulet M, Yoboue ED, Devin A. Mitochondrial ROS generation and its regulation: mechanisms involved in H(2)O(2) signaling. *Antioxid Redox Signal.* 2011 Feb 1;14(3):459–68.
247. Naik E, Dixit VM. Mitochondrial reactive oxygen species drive proinflammatory cytokine production. *J Exp Med.* 2011 Mar 14;208(3):417–20.
248. Perl A. Oxidative stress in the pathology and treatment of systemic lupus erythematosus. *Nat Rev Rheumatol.* 2013 Nov;9(11):674–86.
249. Lee H-T, Wu T-H, Lin C-S, Lee C-S, Wei Y-H, Tsai C-Y, et al. The pathogenesis of systemic lupus erythematosus - From the viewpoint of oxidative stress and mitochondrial dysfunction. *Mitochondrion.* 2016 Sep;30:1–7.
250. Buskiewicz IA, Montgomery T, Yasewicz EC, Huber SA, Murphy MP, Hartley RC, et al. Reactive oxygen species induce virus-independent MAVS oligomerization in systemic lupus erythematosus. *Sci Signal.* 2016 Nov 29;9(456):ra115.
251. van Straalen JW, Giancane G, Amazrhar Y, Tzaribachev N, Lazar C, Uziel Y, et al. A clinical prediction model for estimating the risk of developing uveitis in patients with juvenile idiopathic arthritis. *Rheumatology.* 2020 Dec 4;
252. Monestier M, Losman JA, Fasy TM, Debbas ME, Massa M, Albani S, et al. Antihistone antibodies in antinuclear antibody-positive juvenile arthritis. *Arthritis Rheum.* 1990 Dec;33(12):1836–41.
253. Ostensen M, Fredriksen K, Kåss E, Rekvig OP. Identification of antihistone antibodies in subsets of juvenile chronic arthritis. *Ann Rheum Dis.* 1989 Feb;48(2):114–7.
254. Wittmann B, Neuer G, Michels H, Truckenbrodt H, Bautz FA. Autoantibodies to nonhistone chromosomal proteins HMG-1 and HMG-2 in sera of patients with juvenile rheumatoid arthritis. *Arthritis Rheum.* 1990 Sep;33(9):1378–83.
255. Rosenberg AM, Cordeiro DM. Relationship between sex and antibodies to high mobility group proteins 1 and 2 in juvenile idiopathic arthritis. *J Rheumatol.* 2000 Oct;27(10):2489–93.
256. Zlacka D, Vavrincova P, Hien Nguyen TT, Hromadnikova I. Frequency of anti-hsp60, -65 and -70 antibodies in sera of patients with juvenile idiopathic arthritis. *J Autoimmun.* 2006 Sep;27(2):81–8.
257. Conroy SE, Tucker L, Latchman DS, Isenberg DA. Incidence of anti Hsp 90 and 70 antibodies in children with SLE, juvenile dermatomyositis and juvenile chronic arthritis. *Clin Exp Rheumatol.* 1996 Feb;14(1):99–104.
258. Busch M, Wefelmeyer KL, Walscheid K, Rothaus K, Bauer D, Deeg CA, et al. Identification of Ocular Autoantigens Associated With Juvenile Idiopathic Arthritis-Associated Uveitis. *Front Immunol.* 2019 Aug 6;10:1793.
259. Walscheid K, Hennig M, Heinz C, Wasmuth S, Busch M, Bauer D, et al. Correlation between disease severity and presence of ocular autoantibodies in juvenile idiopathic arthritis-associated uveitis. *Invest Ophthalmol Vis Sci.* 2014 Apr 24;55(6):3447–53.

260. Berntson L, Nordal E, Fasth A, Aalto K, Herlin T, Nielsen S, et al. Anti-type II collagen antibodies, anti-CCP, IgA RF and IgM RF are associated with joint damage, assessed eight years after onset of juvenile idiopathic arthritis (JIA). *Pediatr Rheumatol Online J*. 2014 Jun 11;12:22.
261. Stoll ML, Li QZ, Zhou J, Punaro M, Olsen NJ. Elevated IgG autoantibody production in oligoarticular juvenile idiopathic arthritis may predict a refractory course. *Clin Exp Rheumatol*. 2011 Aug;29(4):736–42.
262. van Rossum M, van Soesbergen R, de Kort S, ten Cate R, Zwinderman AH, de Jong B, et al. Anti-cyclic citrullinated peptide (anti-CCP) antibodies in children with juvenile idiopathic arthritis. *J Rheumatol*. 2003 Apr;30(4):825–8.
263. Sherer Y, Gorstein A, Fritzler MJ, Shoenfeld Y. Autoantibody explosion in systemic lupus erythematosus: more than 100 different antibodies found in SLE patients. *Semin Arthritis Rheum*. 2004 Oct;34(2):501–37.
264. Andreoli L, Fredi M, Nalli C, Franceschini F, Meroni PL, Tincani A. Antiphospholipid antibodies mediate autoimmunity against dying cells. *Autoimmunity*. 2013 Aug;46(5):302–6.
265. Sorice M, Circella A, Misasi R, Pittoni V, Garofalo T, Cirelli A, et al. Cardiolipin on the surface of apoptotic cells as a possible trigger for antiphospholipids antibodies. *Clin Exp Immunol*. 2000 Nov;122(2):277–84.
266. Molhoek JE, de Groot PG, Urbanus RT. The lupus anticoagulant paradox. *Semin Thromb Hemost*. 2018 Jul;44(5):445–52.
267. Riboldi P, Gerosa M, Moroni G, Radice A, Allegri F, Sinico A, et al. Anti-DNA antibodies: a diagnostic and prognostic tool for systemic lupus erythematosus? *Autoimmunity*. 2005 Feb;38(1):39–45.
268. Smith MA, Henault J, Karnell JL, Parker ML, Riggs JM, Sinibaldi D, et al. SLE plasma profiling identifies unique signatures of lupus nephritis and discoid lupus. *Sci Rep*. 2019 Oct 8;9(1):14433.
269. Thompson D, Juby A, Davis P. The clinical significance of autoantibody profiles in patients with systemic lupus erythematosus. *Lupus*. 1993 Feb;2(1):15–9.
270. Hoffman IEA, Peene I, Meheus L, Huizinga TWJ, Cebecauer L, Isenberg D, et al. Specific antinuclear antibodies are associated with clinical features in systemic lupus erythematosus. *Ann Rheum Dis*. 2004 Sep;63(9):1155–8.
271. Abdel-Nasser AM, Ghaleb RM, Mahmoud JA, Khairy W, Mahmoud RM. Association of anti-ribosomal P protein antibodies with neuropsychiatric and other manifestations of systemic lupus erythematosus. *Clin Rheumatol*. 2008 Nov;27(11):1377–85.
272. Gattorno M, Chicha L, Gregorio A, Ferlito F, Rossi F, Jarrossay D, et al. Distinct expression pattern of IFN-alpha and TNF-alpha in juvenile idiopathic arthritis synovial tissue. *Rheumatology*. 2007 Apr;46(4):657–65.
273. Hirschi KK, Nicoli S, Walsh K. Hematopoiesis lineage tree uprooted: every cell is a rainbow. *Dev Cell*. 2017 Apr 10;41(1):7–9.
274. Matsushima H, Geng S, Lu R, Okamoto T, Yao Y, Mayuzumi N, et al. Neutrophil differentiation into a unique hybrid population exhibiting dual phenotype and functionality of neutrophils and dendritic cells. *Blood*. 2013 Mar 7;121(10):1677–89.

275. Köffel R, Meshcheryakova A, Warszawska J, Hennig A, Wagner K, Jörgl A, et al. Monocytic cell differentiation from band-stage neutrophils under inflammatory conditions via MKK6 activation. *Blood*. 2014 Oct 23;124(17):2713–24.
276. Geng L, Zhao J, Deng Y, Molano I, Xu X, Xu L, et al. Human SLE variant NCF1-R90H promotes kidney damage and murine lupus through enhanced Tfh2 responses induced by defective efferocytosis of macrophages. *Ann Rheum Dis*. 2021 Sep 23;
277. Pieterse E, Rother N, Yanginlar C, Gerretsen J, Boeltz S, Munoz LE, et al. Cleaved N-terminal histone tails distinguish between NADPH oxidase (NOX)-dependent and NOX-independent pathways of neutrophil extracellular trap formation. *Ann Rheum Dis*. 2018 Aug 17;77(12):1790–8.
278. Adamus G. Impact of Autoantibodies against Glycolytic Enzymes on Pathogenicity of Autoimmune Retinopathy and Other Autoimmune Disorders. *Front Immunol*. 2017 Apr 28;8:505.