



LUND UNIVERSITY

Vedanatomisk analys av vallgrav i Göteborg

Linderson, Hans

2004

Document Version:
Förlagets slutgiltiga version

[Link to publication](#)

Citation for published version (APA):

Linderson, H. (2004). *Vedanatomisk analys av vallgrav i Göteborg*. (Dendrorapporter i Lund; Vol. 2004:17). Lund University.

Total number of authors:

1

General rights

Unless other specific re-use rights are stated the following general rights apply:

Copyright and moral rights for the publications made accessible in the public portal are retained by the authors and/or other copyright owners and it is a condition of accessing publications that users recognise and abide by the legal requirements associated with these rights.

- Users may download and print one copy of any publication from the public portal for the purpose of private study or research.
- You may not further distribute the material or use it for any profit-making activity or commercial gain
- You may freely distribute the URL identifying the publication in the public portal

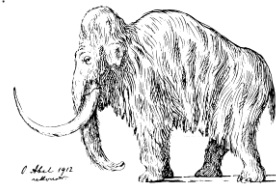
Read more about Creative commons licenses: <https://creativecommons.org/licenses/>

Take down policy

If you believe that this document breaches copyright please contact us providing details, and we will remove access to the work immediately and investigate your claim.

LUND UNIVERSITY

PO Box 117
221 00 Lund
+46 46-222 00 00



21 Maj 2004

Nationella Laboratoriet för Vedanatomi och Dendrokronologi, rapport nr 2004:17
Hans Linderson**VEDANATOMISK ANALYS AV BL.A. VALLGRAV I GÖTEBORG.****Uppdragsgivare:** GAS/N690 Kulturförvaltningen, Box 109, 401 21 Göteborg Mottagarkod 3797. Märk med: Utr Mästerskapsgolfban Mats Sandin. Org nr 2120001355.**Lokalitet:** Göteborg, **Objekt:** Vallgrav**Material:** Kol **Analys:** Stickprov - alla **Antal prover:** 17**Övrigt:** Uttag för kol-14-analys har gjorts på samtliga kolprovnummer.

Resultat

kol- Prov Nr	Provbe- teckning	LATIN NAMN	Svenskt namn	Stam/ Ung stam /Gren	Egenålder år Y=avst. bark	Frekvenser Antal/ Procent	Andel av prov ca %
1	S 33	Corylus	Hassel	ungstam	0	3/100	90
2	S 88	Betula	Björk	Gren	<10	4/100	80
3	S 99	Betula	Björk	Gren Stam	< 10	1/33 2/67	100
4	S 110	Corylus	Hassel	Ungstam	< 20	4/100	100
7a	S 118	Betula	Björk	Gren	0	3/43 (100)	70
7b	S 118	Tilia	Lind	Stam?	<100 ej C-14	4/57 (100)	50
8	S 119	Fraxinus	Ask	Stam	< 50	3/100	100
9	S 135	Ulmus Fagus	Alm Bok	Gren Stam	< 5 < 50 ej C-14	2/50 2/50	100
11	S 560	Quercus	Ek	Stam	< 100	4/100	80
12*	S 647	Quercus	Ek	Stam	< 5	4/100	100
13	S 667	Corylus Quercus	Hassel Ek	Ung stam Stam	< 20 < 50 ej C-14	7/64 4/36	80
14**	S 678	Betula Quercus	Björk Ek	Stam Stam	<50 <200 ej c-14	3/60 2/40	100
15	S 704	Corylus	Hassel	Ung stam	< 20	4/100	60
16	S 732	Alnus	Al	stam	< 50	2/100	100
17***	S 748	Betula	Björk	Stam?	< 50	Fragment/100	50

* Krossade bitar med ler/silt infyllnad.

** Tätvuxen ek, tyder på att virket är taget ur ett slutet bestånd.

*** Låg vikt av kol

Hans Linderson