



LUND UNIVERSITY

Cardiovascular magnetic resonance derived pressure volume loop variables in patients with ST-elevation myocardial infarction provide physiological information beyond ejection fraction

Lav, Theodor; Nordlund, David; Jablonowski, Robert; Khoshnood, Ardavan M.; Ekelund, Ulf; Atar, Dan; Erlinge, David; Engblom, Henrik; Arheden, Håkan

2023

Document Version:

Publisher's PDF, also known as Version of record

[Link to publication](#)

Citation for published version (APA):

Lav, T., Nordlund, D., Jablonowski, R., Khoshnood, A. M., Ekelund, U., Atar, D., Erlinge, D., Engblom, H., & Arheden, H. (2023). *Cardiovascular magnetic resonance derived pressure volume loop variables in patients with ST-elevation myocardial infarction provide physiological information beyond ejection fraction*. Poster session presented at Svenska kardiologiska vårmötet, Stockholm, Sweden.

Total number of authors:

9

Creative Commons License:

Unspecified

General rights

Unless other specific re-use rights are stated the following general rights apply:

Copyright and moral rights for the publications made accessible in the public portal are retained by the authors and/or other copyright owners and it is a condition of accessing publications that users recognise and abide by the legal requirements associated with these rights.

- Users may download and print one copy of any publication from the public portal for the purpose of private study or research.
- You may not further distribute the material or use it for any profit-making activity or commercial gain
- You may freely distribute the URL identifying the publication in the public portal

Read more about Creative commons licenses: <https://creativecommons.org/licenses/>

Take down policy

If you believe that this document breaches copyright please contact us providing details, and we will remove access to the work immediately and investigate your claim.

LUND UNIVERSITY

PO Box 117
221 00 Lund
+46 46-222 00 00

Cardiovascular magnetic resonance derived pressure volume loop variables in patients with ST-elevation myocardial infarction provide physiological information beyond ejection fraction



LUND
UNIVERSITY
Cardiac MR Group

Theodor Lav^a, David Nordlund MD PhD^a, Robert Jablonowski MD PhD^a, Ardavan Khoshnood MD PhD^b, Ulf Ekelund MD PhD^c, Dan Atar MD PhD^{d,e}, David Erlinge MD PhD^f, Henrik Engblom MD PhD^f, Håkan Arheden MD PhD^a

^aClinical Physiology, Department of Clinical Sciences Lund, Lund University and Skane University Hospital, Lund, Sweden ^bEmergency Medicine, Department of Clinical Sciences Malmö, Lund University, Skane University Hospital, Malmö, Sweden ^cEmergency Medicine, Department of Clinical Sciences Lund, Lund University and Skane University Hospital, Lund, Sweden ^dDept. of Cardiology, Oslo University Hospital Ullevål, Oslo, Norway ^eInstitute of Clinical Medicine, University of Oslo, Norway ^fCardiology, Department of Clinical Sciences Lund, Lund University and Skane University Hospital, Lund, Sweden

Background

A novel non-invasive method for generation of pressure volume loops (PV-loops) using brachial blood pressure and cardiovascular magnetic resonance (CMR) imaging has recently been presented and validated (1).

The aim was to investigate if PV-loop variables could provide incremental diagnostic information beyond conventional measurements in patients with acute myocardial infarction (MI).

Method

- 100 patients with ST-elevation MI and CMR 2-6 days after MI
- 75 healthy volunteers with CMR
- Non-invasive PV-loops were measured by volumetric CMR data and brachial sphygmomanometric pressure (1)
- Maximal elastance (E_{max} = contractility), stroke work and ventriculoarterial coupling (E_a/E_{max}) were measured from the PV-loops (see **Figure 1** for examples)
- Infarct size was assessed by late gadolinium enhancement
- Myocardium at risk was assessed by contrast-enhanced steady state free precession

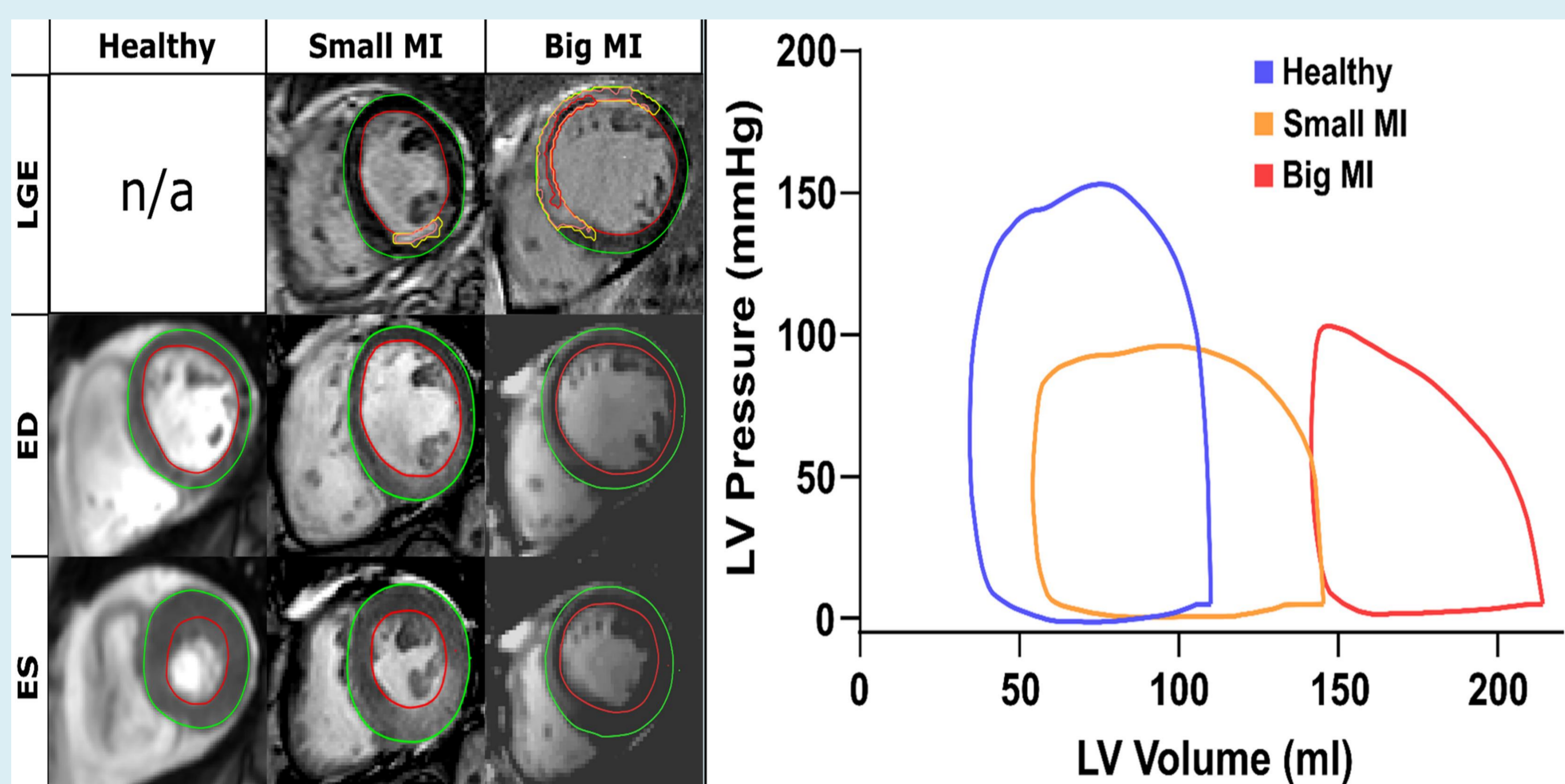


Figure 1. Example of PV-loops in patients with myocardial infarction.

Variables	Myocardial infarction	Healthy volunteers	P-value
Contractility, mmHg/mL	1.34±0.48	1.50±0.41	0.024
Ventricular arterial coupling	1.27±0.61	0.73±0.17	<0.001
Stroke work, J	0.96±0.32	1.38±0.32	<0.001
EDV, mL	166.5±34.0	174.3±32.9	0.131
EF, %	48.6±10.0	61.0±5.9	<0.001

Table 1. PV-loop variables in patients with myocardial infarction and healthy volunteers.

Results

All PV-loop variables differed significantly in patients with acute myocardial infarction compared to healthy volunteers (**Table 1**). Furthermore, contractility, stroke work and ventriculoarterial coupling correlated to infarct size (E_{max} : $r^2=0.29$, E_a/E_{max} : $r^2=0.41$, stroke work: $r^2=0.25$) and myocardium at risk (E_{max} : $r^2=0.25$, E_a/E_{max} : $r^2=0.36$, stroke work: $r^2=0.21$) as shown in **Figure 2**.

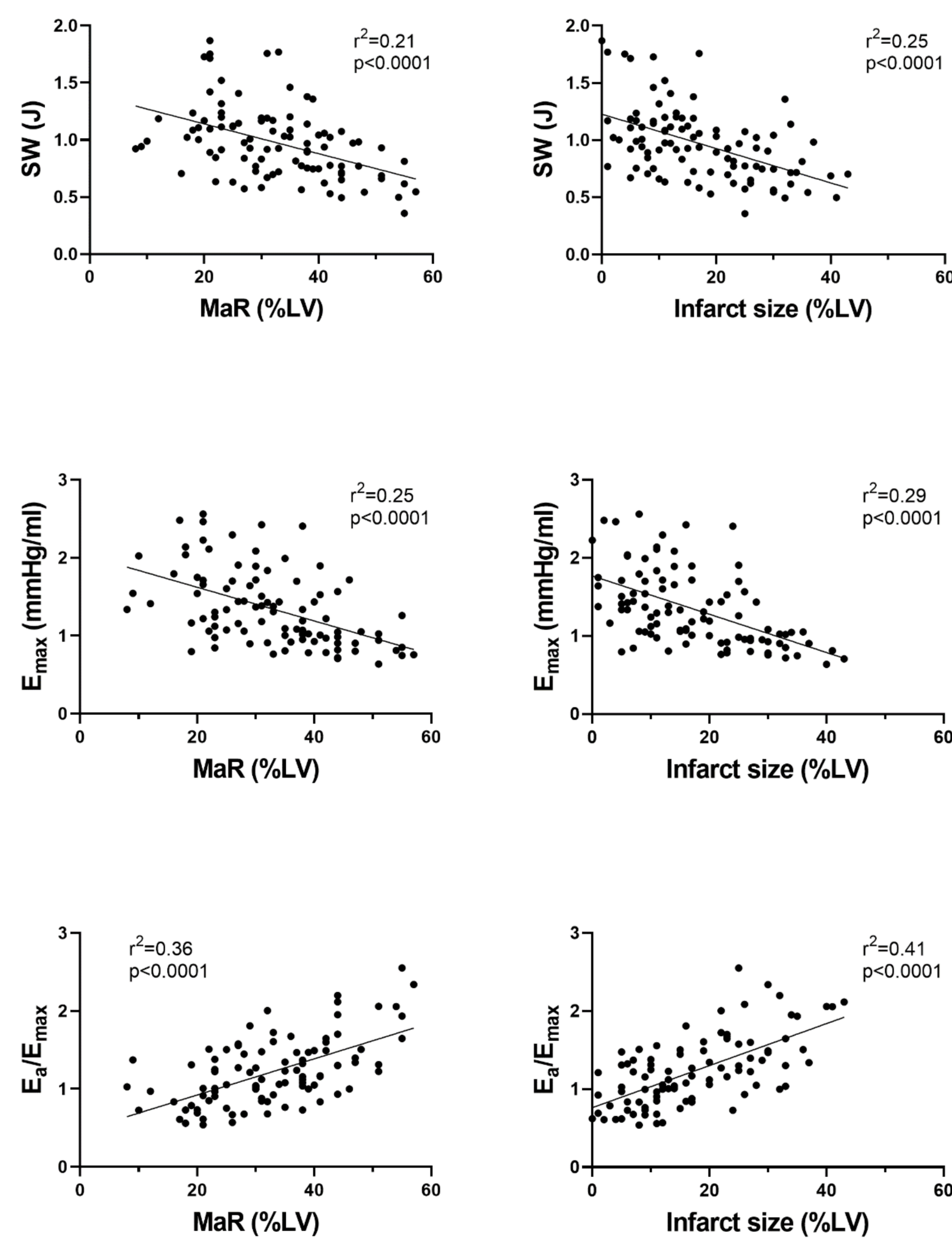


Figure 2. Stroke work, contractility and ventriculoarterial coupling versus myocardium at risk (left column) and infarct size (right column).

Conclusion

Non-invasive cardiovascular magnetic resonance derived PV-loop variables such as contractility, stroke work and ventriculoarterial coupling provide incremental diagnostic information beyond cardiac dimensions and ejection fraction early after acute myocardial infarction.

References

- (1) Seemann et al. Circ Cardiovasc Imaging 2019;12(1)