



LUND UNIVERSITY

Effects of cyclin D-1 gene amplification and protein expression on time to recurrence in postmenopausal breast cancer patients treated with anastrozole or tamoxifen: a TransATAC study

Lundgren, Katja; Brown, Matthew; Pineda, Silvia; Cuzick, Jack; Salter, Janine; Zabaglo, Lila; Howell, Anthony; Dowsett, Mitch; Landberg, Goeran

Published in:
Breast Cancer Research

DOI:
[10.1186/bcr3161](https://doi.org/10.1186/bcr3161)

2012

[Link to publication](#)

Citation for published version (APA):

Lundgren, K., Brown, M., Pineda, S., Cuzick, J., Salter, J., Zabaglo, L., Howell, A., Dowsett, M., & Landberg, G. (2012). Effects of cyclin D-1 gene amplification and protein expression on time to recurrence in postmenopausal breast cancer patients treated with anastrozole or tamoxifen: a TransATAC study. *Breast Cancer Research*, 14(2). <https://doi.org/10.1186/bcr3161>

Total number of authors:
9

General rights

Unless other specific re-use rights are stated the following general rights apply:
Copyright and moral rights for the publications made accessible in the public portal are retained by the authors and/or other copyright owners and it is a condition of accessing publications that users recognise and abide by the legal requirements associated with these rights.

- Users may download and print one copy of any publication from the public portal for the purpose of private study or research.
- You may not further distribute the material or use it for any profit-making activity or commercial gain
- You may freely distribute the URL identifying the publication in the public portal

Read more about Creative commons licenses: <https://creativecommons.org/licenses/>

Take down policy

If you believe that this document breaches copyright please contact us providing details, and we will remove access to the work immediately and investigate your claim.

LUND UNIVERSITY

PO Box 117
221 00 Lund
+46 46-222 00 00

RESEARCH ARTICLE

Open Access

Effects of cyclin D₁ gene amplification and protein expression on time to recurrence in postmenopausal breast cancer patients treated with anastrozole or tamoxifen: a TransATAC study

Katja Lundgren^{1,2}, Matthew Brown², Silvia Pineda³, Jack Cuzick³, Janine Salter⁴, Lila Zabaglo⁴, Anthony Howell², Mitch Dowsett^{4,5} and Göran Landberg^{2,6*}, for the TransATAC investigators

Abstract

Introduction: Gene amplification of *CCND1* is observed in a subgroup of breast cancers with poor prognosis, whereas overexpression of the protein cyclin D₁ has been linked to both worse and better clinical outcome. *CCND1* amplification and protein overexpression have also been associated with resistance to treatment with tamoxifen or even to a potentially detrimental effect of tamoxifen.

Methods: To clarify these challenging and partly contrasting treatment predictive and prognostic links for cyclin D₁ we analysed a large cohort of postmenopausal breast cancer patients randomised to receive either adjuvant anastrozole or tamoxifen, as part of the Arimidex, Tamoxifen, Alone or in Combination (ATAC) trial. The *CCND1* amplification status and protein expression of cyclin D₁ were assessed by chromogenic *in situ* hybridisation and immunohistochemistry, respectively, in 1,155 postmenopausal, oestrogen-receptor-positive breast cancer patients included in the TransATAC substudy.

Results: Amplification of *CCND1* was observed in 8.7% of the tumours and was associated with increased risk of disease recurrence (hazard ratio = 1.61; 95% confidence interval, 1.08 to 2.41) after adjustment for other clinicopathological parameters. In contrast, nuclear expression of cyclin D₁ protein was associated with decreased recurrence rate (hazard ratio = 0.6; 95% confidence interval, 0.39 to 0.92). The intensity of nuclear or cytoplasmic expression was not of prognostic value. There was no significant interaction between cyclin D₁ status and treatment efficacy, ruling out any major detrimental effect of tamoxifen in *CCND1*-amplified postmenopausal breast cancer.

Conclusions: In summary, *CCND1* amplification and low nuclear expression of cyclin D₁ predicted poor clinical outcome in postmenopausal breast cancer patients treated with either anastrozole or tamoxifen.

Trial Registration: Current Controlled Trials ISRCTN18233230.

Introduction

Hormone dependence is a fundamental hallmark of the majority of breast cancers, and tumour growth can be inhibited either by deprivation of circulating oestrogens or by antagonising the effect of these hormones on their receptors [1]. The selective oestrogen receptor (ER)

modulator tamoxifen has long been the most commonly used adjuvant therapy for patients with advanced hormone-sensitive breast cancer [2]. In recent years, however, aromatase inhibitors have become an alternative treatment option for postmenopausal women with breast cancer. An aromatase inhibitor acts by interfering with the enzyme that converts androgens to oestrogen, and reduces tumour and systemic oestrogen concentration [3]. The third-generation selective aromatase inhibitor anastrozole (Arimidex) reduces serum oestradiol to nanomolar concentrations [4]. The Arimidex, Tamoxifen,

* Correspondence: glandberg@picr.man.ac.uk

²Breakthrough Breast Cancer Research Unit, School of Cancer, Enabling Sciences and Technology, University of Manchester, Manchester Academic Health Science Centre Paterson Institute for Cancer Research, The Christie NHS Foundation Trust, Wilmslow Road, Manchester M20 4BX, UK
Full list of author information is available at the end of the article

Alone or in Combination (ATAC) trial was designed to compare the efficacy of anastrozole alone or in combination with the established adjuvant treatment, tamoxifen for 5 years, as adjuvant treatment for postmenopausal women with operable breast cancer [5]. The study demonstrated that the efficacy of anastrozole was higher compared with tamoxifen alone, and also superior to the combination of both agents [5,6]. After a median follow-up of 10 years, 5 years after completion of treatment, the significant advantage for anastrozole over tamoxifen as initial adjuvant therapy for postmenopausal, ER-positive breast cancer patients was confirmed [7].

In breast cancer, genetic alterations such as amplifications and deletions occur within the tumour at high frequencies, and a number of these alterations are closely related to poor clinical outcome. One such region of amplification is 11q13, harbouring the cyclin D₁ gene *CCND1* [8-10]. Cyclin D₁ plays a crucial role as a cell cycle regulator, promoting progression through the G₁-S phase, following complex formation with CDK4/6 and phosphorylation of the retinoblastoma protein [11]. Various studies have described the oncogenic capacity of cyclin D₁ *in vitro*, and overexpression *in vivo* results in tumour formation [12-14]. Overexpression of cyclin D₁ is observed in approximately 50% of breast cancers [15,16], and cyclin D₁ is one of the most commonly overexpressed proteins in this form of cancer. A number of studies report cyclin D₁ overexpression to be a predictor of worse prognosis [17,18], while others have found an association with an ER-positive phenotype and a better clinical outcome [19-23]. In about 15% of all primary breast cancers, overexpression is due to amplification of the corresponding gene *CCND1* [15,24,25], and this specific amplification has been linked to poor prognosis [23,26].

Despite the presence of ER α , approximately 50% of breast cancers develop resistance to hormonal treatment, a major clinical limitation of breast cancer therapy [27,28]. The mechanisms behind this phenomenon have been extensively studied, and imply a complex signalling network governing ER function and interaction with various co-regulators [29-32]. Cyclin D₁ is one such co-factor, known to interact with ER α and, independently of oestrogen, activate the receptor and potentially modify oestrogen/anti-oestrogen responses [33,34]. Overexpression of cyclin D₁ has been reported to result in a conformational change in ER α that induces receptor activation in the presence of the novel selective ER modulator arzoxifene, which in turn promotes growth of MCF-7 cells - indicating a change from antagonist to agonist [28]. This study also suggests that different mechanisms are required to confer resistance depending on the specific anti-oestrogen administered, and that changes in the conformation of ER α play a crucial role in anti-hormonal insensitivity. A similar study demonstrated that

overexpression of cyclin D₁ reversed the growth inhibitory effect of tamoxifen in two ER-positive breast cancer cell lines [35]. In line with these experimental findings we have previously observed that cyclin D₁ overexpression was associated with tamoxifen resistance in premenopausal and postmenopausal breast cancer [21,36]. Worryingly, amplification of *CCND1* was further linked to a potentially detrimental effect of tamoxifen in premenopausal breast cancer patients, when compared with randomised control patients not receiving any adjuvant therapy [36].

The aim of our study was to characterise the association between *CCND1* amplification and cyclin D₁ protein expression and breast cancer recurrence in a large randomised cohort of postmenopausal patients with ER-positive breast cancer treated with endocrine therapy. In addition, we aimed to assess whether there was a significant difference in response to anastrozole versus tamoxifen according to cyclin D₁ gene and protein status, and thereby to address any potentially unfavourable effects of tamoxifen in subgroups of breast cancer defined by *CCND1* amplification.

Materials and methods

Patients

The ATAC trial originally evaluated the efficacy and safety of 5 years of anastrozole, tamoxifen, or the combination of both treatments in postmenopausal patients presenting with localised breast cancer [7]. For the TransATAC protocol, formalin-fixed, paraffin-embedded blocks of the primary tumour were collected from as many hormone-receptor-positive patients as possible, from the monotherapy trial arms [37]. The endpoint for the analyses was any breast cancer recurrence and the median follow-up time was 10 years. The original study was performed according to the Declaration of Helsinki after approval by an institutional review board and ethics committee, and informed consent was obtained from all patients enrolled in the study.

Immunohistochemistry

Nine tissue microarrays (TMAs) were used, each originally including from 165 to 200 tumour tissue samples from the patients included in the TransATAC study. This set of TMAs had one tissue core for each patient: a sample set was analysed for cyclin D₁ protein expression and a set was analysed for *CCND1* copy number. For detailed description of the TMA assembly we refer to our previously published study [37]. The TMA slides were deparaffinised, rehydrated and microwave-treated in target retrieval solution pH 9.9 (Dako, Glostrup, Denmark), and were processed in an automated immunostainer (Techmate 500; Dako, Copenhagen, Denmark) using the Envision software (Dako, Glostrup, Denmark).

The antibody employed was a mouse monoclonal antibody reactive against human cyclin D₁ (1:100, clone DSC-6; Dako, Glostrup, Denmark).

Staining of cyclin D₁ was assessed as cytoplasmic staining intensity (0 to 2) as well as nuclear staining intensity (0 to 3) and fraction-positive nuclei (0, < 1%, 1 to 9%, 10 to 32%, 33 to 67% and > 67%) according to the Allred Score [38]. Evaluation was performed by two independent observers (one a pathologist), with the pathologist's score superseding the other observer's at consolidation. Conflicting observations were low (< 5%) for all evaluations made. All immunohistochemical evaluations were performed without knowledge of tumour characteristics. In cases of no evaluation, the tumour cores were either nonrepresentative (that is, no invasive tumour cells) or were missing. This study was carried out and is reported according to REMARK guidelines [39].

Chromogenic *in situ* hybridisation

Chromogenic *in situ* hybridisation (CISH) was performed according to the Zymed SPoT-Light Cyclin D₁ Probe protocol suited for CISH [40] using the SPoT-Light Cyclin D₁ Amplification Probe (Zymed Laboratories, Invitrogen Immunodetection, San Francisco, CA, USA). Pretreatment procedures included heating and enzyme digestion to optimise the CISH performance. Nonamplified cases were classified as 0, cases with up to 8 copies classified as 1 and > 8 copies classified as 2. In statistical analyses, classifications 1 and 2 were both included in the subgroup defined as amplified.

Statistical analyses

The primary endpoint for the analyses was time to recurrence (TTR), also known as the recurrence-free interval. TTR was defined as the time from randomisation to first locoregional recurrence, distant recurrence or contralateral disease. Statistical analyses were performed according to a prespecified statistical analysis plan approved by the ATAC Steering Committee. Cox proportional hazards regression models were fitted to TTR, and hazard ratios (HRs) and associated 95% confidence intervals (CIs) were estimated. The statistical tests employed for correlations between cyclin D₁ variables and clinicopathological parameters were the Armitage's trend test, the Wilcoxon test, the Goodman's test and the Cuzick test [41]. Multiple hypothesis testing was not corrected for, thus marginal *P* values should be interpreted with caution. The contribution of cyclin D₁ protein expression was analysed by the change in likelihood ratio chi-squared test (one degree of freedom) univariately and multivariately, in addition to a model with tumour size, nodal status, grade (central) and Ki67 expression, for all patients and nonamplified patients. All hypothesis tests were conducted at the two-sided

P = 0.05 level. For detailed description of statistical analyses, we refer to a previous report [42].

Results

Distribution of *CCND1* amplification status and cyclin D₁ protein staining categories

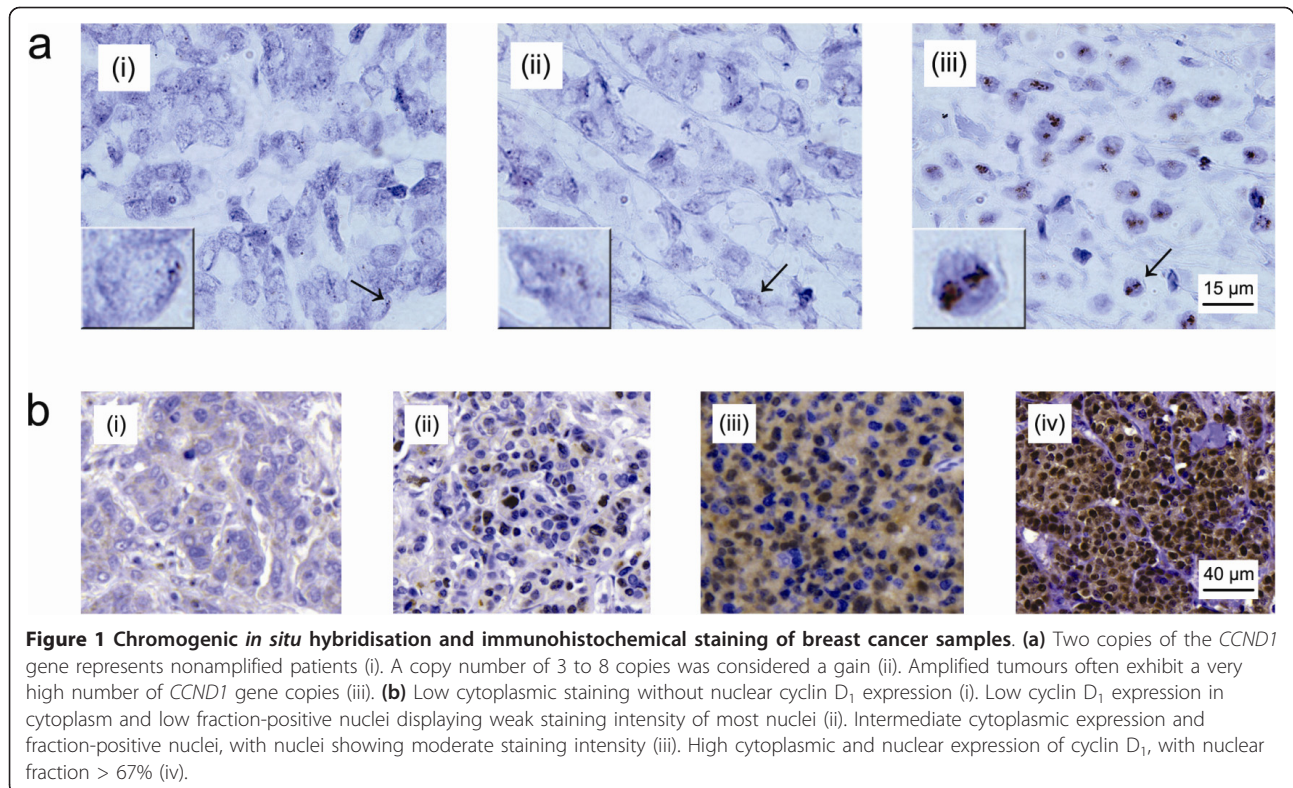
In the ATAC trial, 5,880 hormone-receptor-positive breast cancer patients were randomly assigned to receive the monotherapy anastrozole or tamoxifen. For the TransATAC protocol, 1,868 patients from the monotherapy arms were initially included. In the present study, 627 patients were not assessable for *CCND1* amplification status due to missing or damaged tissue cores, and 86 patients were excluded as they did not meet the study criteria of being ER-positive, leaving 1,155 patients assessable for *CCND1* amplification status. Out of the patients with known amplification status, 1,054 (91.3%) exhibited nonamplified tumours and 101 (8.7%) were amplified (Figure 1a). High cyclin D₁ cytoplasmic intensity was observed in 380 tumours (32.9%), high nuclear cyclin D₁ intensity in 278 tumours (24.1%), and 190 tumours (16.5%) had > 67% nuclear fraction positivity as detailed in Additional file 1. *CCND1* gene amplification was associated with a higher expression of nuclear cyclin D₁ (*P* < 0.001) as well as a higher fraction of positive nuclei (*P* < 0.001), but was not significantly correlated to the amount of cytoplasmic protein (*P* = 0.063) (Table 1 and Figure 1b). Furthermore, positive correlations were observed between nuclear and cytoplasmic components of cyclin D₁ protein expression.

CCND1 gene amplification and patient prognosis

Initially we studied the association between *CCND1* amplification status and TTR. Survival plots showed that patients exhibiting *CCND1*-amplified tumours had an increased risk of recurrence compared with patients showing nonamplified tumours (HR = 2.04; 95% CI, 1.37 to 3.03; $\chi_1^2 = 10.51$; *P* < 0.001, univariate) (Figure 2a). Even when adjusting for the effects of tumour size, nodal status, grade (central) and Ki67 expression, amplification of *CCND1* was significantly associated with an increased risk of recurrence (HR = 1.61; 95% CI, 1.08 to 2.41; *P* = 0.03) (Table 2).

Cyclin D₁ protein expression and patient prognosis

We next investigated how cyclin D₁ protein localisation and expression was related to TTR. There was no significant difference in TTR with relation to cytoplasmic cyclin D₁ (Figure 2b) or cyclin D₁ nuclear intensity (Figure 2c and Table 2). Surprisingly, a greater fraction of cyclin D₁-positive nuclei was associated with longer TTR (HR = 0.60; 95% CI, 0.39 to 0.92; *P* = 0.03) when adjusted for the effects of tumour size, nodal status,



grade and Ki67 expression (Figures 2d, 3b and Table 2). Also, when subcategorising patients into high versus lower subgroups of cytoplasmic cyclin D₁ there was a trend towards a significant difference in TTR ($P = 0.055$; univariate, HR = 0.71; 95% CI, 0.51 to 0.98; $P = 0.039$) (Figure 3a and Table 2). When focusing on the non-amplified breast cancer samples, high cytoplasmic cyclin D₁ protein expression was indeed associated with a better outcome ($P = 0.005$) (Figure 3c and Table 2). The data further indicated that the lowest fraction of cyclin D₁-positive nuclei (< 1%) was associated with shorter TTR compared with subgroups of higher percentage positive nuclei, as illustrated in Figure 3b, d. Unfortunately, the number of *CCND1*-amplified cases was too low to analyse survival according to nuclear protein expression; that is, this subgroup contained no cases exhibiting a nuclear protein expression < 1%.

Interactions of cyclin D₁ and treatment, nodal status and Ki67

Based on previous reports indicating that amplification of the *CCND1* gene and cyclin D₁ overexpression might be associated with tamoxifen resistance or detrimental effects, we wanted to elucidate whether this could be further clarified in the patient cohort of the present study. The subgroup of patients treated with tamoxifen included 571 cases, and the anastrozole-treated subgroup

included 584 patients. For *CCND1* amplification status there was no significant difference in TTR between anastrozole-treated and tamoxifen-treated patients (Figure 4a). Moreover, for nonamplified cases there was no difference according to nodal status or Ki67 levels between the treatment arms. For cytoplasmic cyclin D₁ expression there was an association in TTR according to amplification status (HR = 2.8; 95% CI, 1.2 to 6.4 for the interaction) (Figure 4b). In nonamplified breast cancers, however, no significant difference in TTR was observed for treatment (HR = 1.8; 95% CI, 0.8 to 3.9 for the interaction), nodal status (HR = 1.5; 95% CI, 0.7 to 3.2) or Ki67 levels (HR = 1.3; 95% CI, 0.6 to 3.0) (Figure 4b). Finally, for the nuclear fraction we observed an association in Ki67 levels for TTR (HR = 3.5; 95% CI, 1.0 to 12.3 for the interaction) (Figure 4c).

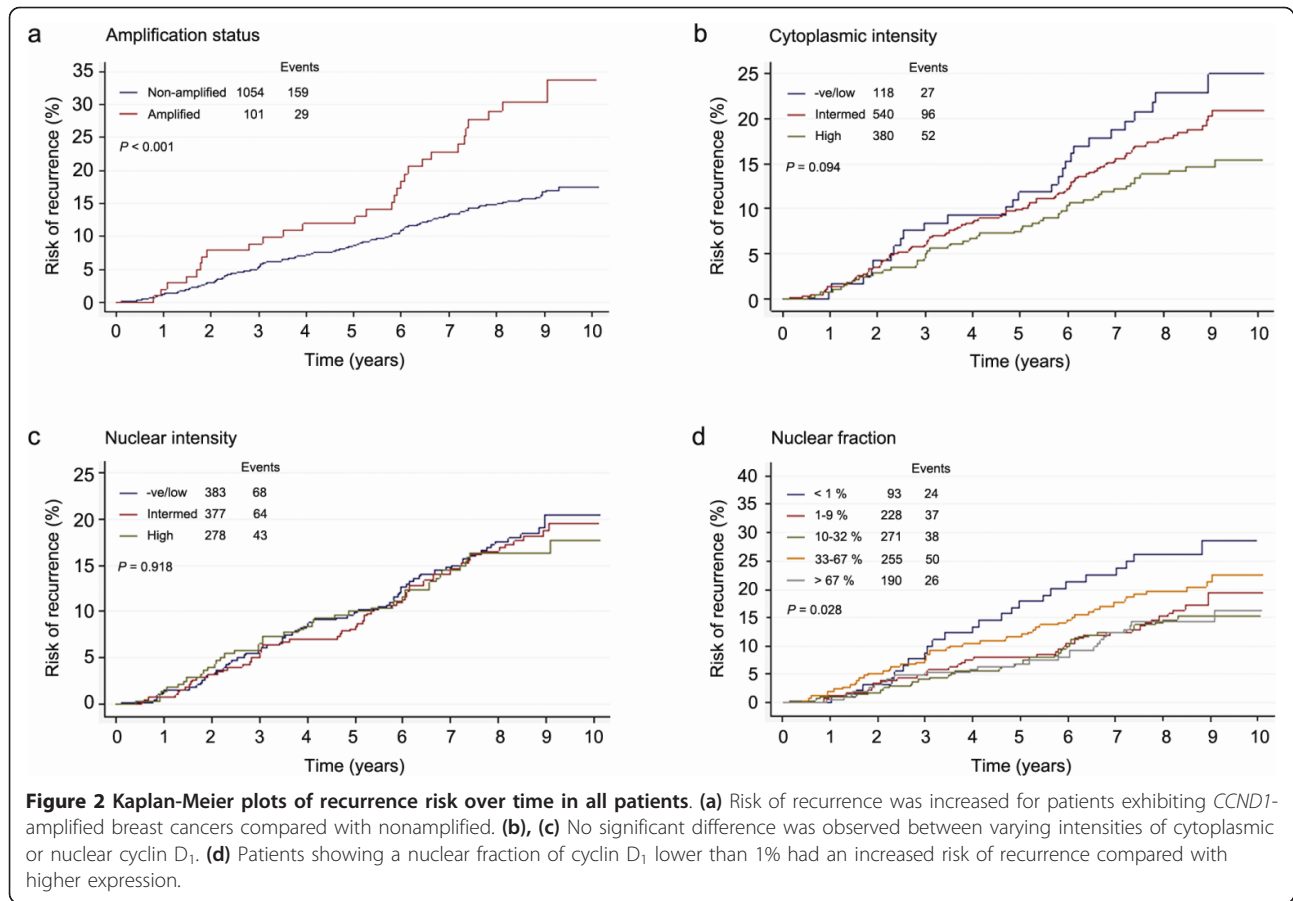
Cyclin D₁, *CCND1* and clinicopathological data

The *CCND1* amplification status was positively correlated to tumour grade ($P < 0.001$) and proliferation (defined as Ki67 expression) ($P < 0.001$), but not to nodal status or tumour size (Table 1). Cytoplasmic cyclin D₁ expression was inversely correlated to tumour size (all patients; $P = 0.01$) and nodal status ($P = 0.031$), and was positively correlated to proliferation ($P = 0.021$). Both nuclear staining intensity of cyclin D₁ and fraction-positive nuclei were associated with higher

Table 1 Associations between CCND1 amplification status, cyclin D₁ protein expression and clinicopathological variables in all patients

All patients	Cyclin D ₁ cytoplasmic intensity (negative/low, intermediate, high)	Cyclin D ₁ nuclear intensity (negative/low, intermediate, high)	Cyclin D ₁ nuclear fraction (< 1%, 1 to 9%, 10 to 32%, 33 to 67%, > 67%)	Tumour grade (well, moderate, poor)	Tumour size ^a (mm)	Nodal status (negative, 1 to 3, > 3)	Ki67 ^a
<i>CCND1</i> amplification							
Nonamplified	12%, 52%, 36%	40%, 36%, 24%	10%, 24%, 27%, 24%, 15%	23%, 61%, 16%	18.0	70%, 23%, 7%	4.0
Amplified	6%, 48%, 46%	9%, 35%, 56%	0%, 6%, 18%, 32%, 44%	9%, 62%, 29%	19.0	64%, 26%, 10%	7.5
	Armitage (<i>P</i> = 0.063)	Armitage (<i>P</i> < 0.001)	Armitage (<i>P</i> < 0.001)	Armitage (<i>P</i> < 0.001)	Wilcoxon (<i>P</i> = 0.083)	Armitage (<i>P</i> = 0.341)	Wilcoxon (<i>P</i> < 0.001)
Cyclin D ₁ cytoplasmic intensity							
Negative/low		74%, 16%, 10%	23%, 33%, 26%, 11%, 4%	26%, 59%, 15%	17.5	68%, 24%, 8%	3.2
Intermediate		40%, 36%, 24%	10%, 24%, 27%, 25%, 14%	17%, 63%, 20%	19.0	64%, 34%, 2%	4.6
High		20%, 43%, 37%	3%, 16%, 25%, 28%, 28%	23%, 61%, 16%	17.0	74%, 20%, 6%	5.6
		Goodman = 0.44 (<i>P</i> < 0.001)	Goodman = 0.39 (<i>P</i> < 0.001)	Goodman = -0.06 (<i>P</i> = 0.238)	Cuzick trend (<i>P</i> = 0.010)	Goodman = -0.12 (<i>P</i> = 0.031)	Cuzick trend (<i>P</i> = 0.021)
Cyclin D ₁ nuclear intensity							
Negative/low			23%, 33%, 26%, 11%, 4%	24%, 62%, 14%	18.0	67%, 25%, 8%	2.9
Intermediate			1%, 12%, 41%, 36%, 10%	18%, 65%, 17%	18.0	68%, 25%, 7%	4.8
High			0%, 1%, 7%, 37%, 55%	17%, 59%, 24%	17.5	71%, 22%, 7%	6.3
			Goodman = 0.88 (<i>P</i> < 0.001)	Goodman = 0.16 (<i>P</i> < 0.001)	Cuzick trend (<i>P</i> = 0.553)	Goodman = -0.05 (<i>P</i> = 0.327)	Cuzick trend (<i>P</i> < 0.001)
Cyclin D ₁ nuclear fraction							
< 1%				18%, 68%, 14%	20.0	2%, 29%, 9%	2.8
1 to 9%				23%, 62%, 15%	18.0	68%, 25%, 7%	2.7
10 to 32%				24%, 59%, 17%	18.0	71%, 25%, 4%	4.4
33 to 67%				20%, 59%, 21%	18.0	70%, 21%, 9%	4.9
> 67%				12%, 68%, 20%	16.0	68%, 24%, 8%	5.9
				Cuzick trend (<i>P</i> = 0.005)	Spearman ρ = -0.04 (<i>P</i> = 0.162)	Cuzick trend (<i>P</i> = 0.694)	Spearman ρ = 0.22 (<i>P</i> < 0.001)

Tests used: Armitage's trend test, Wilcoxon test, Goodman's test, Spearman correlation test and Cuzick test. ^aMedian value for each category.



grade ($P < 0.001$ and $P = 0.005$ respectively) and higher proliferation rate (both $P < 0.001$).

Cyclin D₁, proliferation and time to recurrence

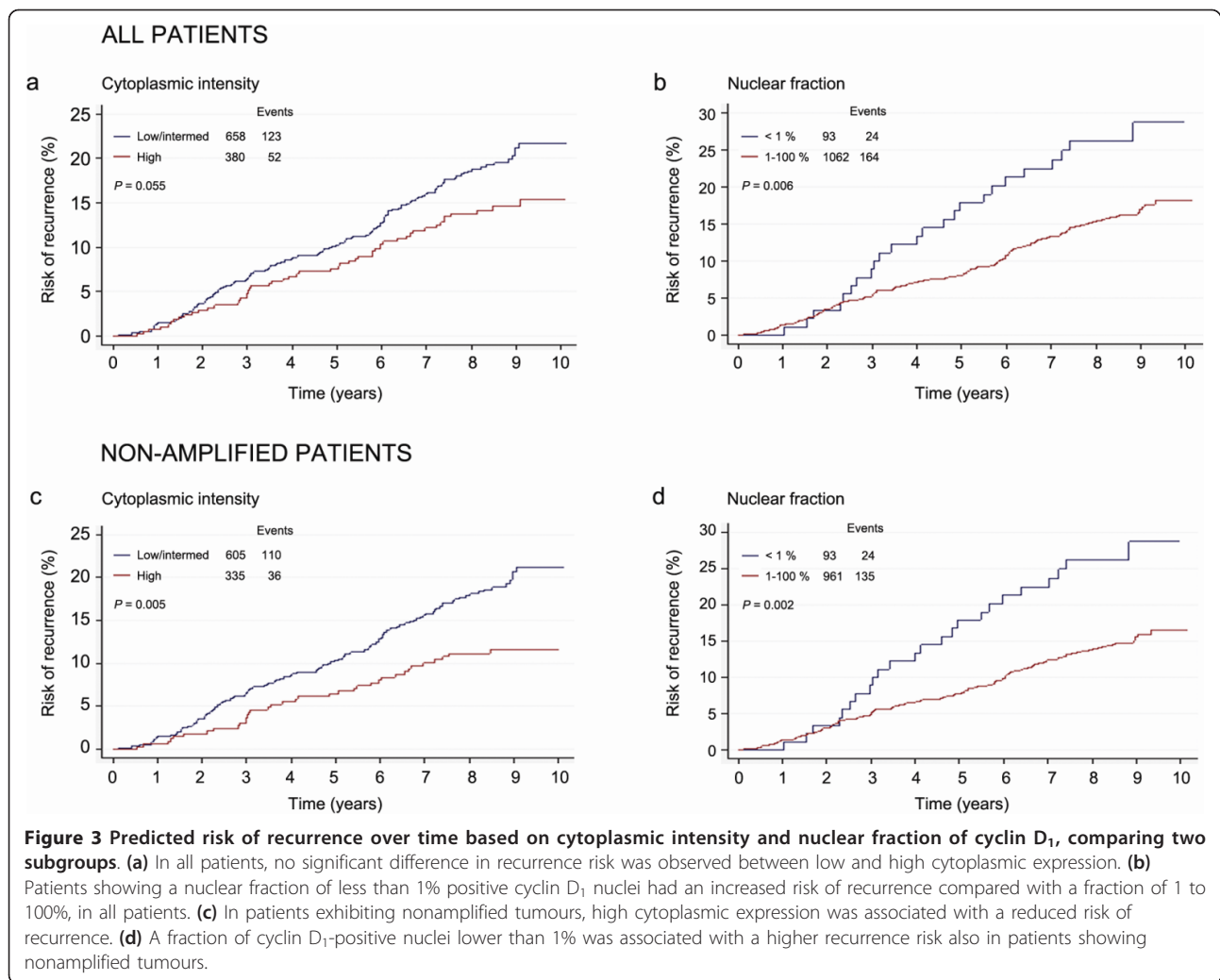
Ki67 expression is a common marker used to analyse the proliferation rate in tumour samples, and high proliferation is linked to a more aggressive tumour phenotype. Surprisingly, despite a positive correlation between nuclear cyclin D₁ expression and Ki67 expression (Table 1 and

Figure 5a), high expression of nuclear cyclin D₁ was associated with an improved TTR compared with low expression. To further illustrate how a combined proliferation and cyclin D₁ assessment would be linked to TTR we subdivided patients according to Ki67 expression and nuclear cyclin D₁ status. Patients with tumours exhibiting low Ki67 expression in association with 1 to 100% cyclin D₁-positive nuclei (high) were associated with a considerably lower risk of recurrence ($P < 0.001$) (Figure 5b) compared

Table 2 Cox proportional Hazards models for estimating the effect on time to recurrence

	Univariate			Multivariate		
	HR (95% CI)	χ_1^2	P value	HR (95% CI)	χ_1^2	P value
All patients						
CCND1, amplified vs. nonamplified	2.04 (1.37 to 3.03)	10.51	< 0.001	1.61 (1.08 to 2.41)	4.86	0.030
Cyclin D ₁ cytoplasmic intensity, high vs. remainder	0.71 (0.51 to 0.98)	4.43	0.039	0.78 (0.56 to 1.09)	2.15	0.143
Cyclin D ₁ nuclear intensity, high vs. remainder	0.91 (0.64 to 1.28)	0.30	0.588	0.85 (0.59 to 1.21)	0.84	0.360
Cyclin D ₁ nuclear fraction, 1 to 100% vs. < 1%	0.58 (0.38 to 0.90)	5.28	0.014	0.60 (0.39 to 0.92)	4.75	0.030
Nonamplified patients						
Cyclin D ₁ cytoplasmic intensity, high vs. remainder	0.57 (0.39 to 0.82)	9.57	0.003	0.64 (0.44 to 0.95)	5.21	0.022
Cyclin D ₁ nuclear intensity, high vs. remainder	0.88 (0.60 to 1.32)	0.38	0.545	0.84 (0.55 to 1.26)	0.76	0.382
Cyclin D ₁ nuclear fraction, 1 to 100% vs. < 1%	0.52 (0.34 to 0.81)	7.29	0.004	0.54 (0.35 to 0.85)	6.36	0.012

The χ_1^2 value is based on the likelihood ratio test with the associated P values. Multivariate analyses were adjusted for tumour grade, tumour size, nodal status and Ki67. CI, confidence interval; HR, hazard ratio.



with the other subgroups. The subgroups of low cyclin D₁ include quite low patient numbers and hence the results should be interpreted with caution, but these results suggest that the expression of cyclin D₁ affects disease outcome independently of proliferation status.

Discussion

Amplification of the *CCND1* gene has been associated with a poor patient outcome in previous studies [19,26], whilst controversy regarding overexpression of cyclin D₁ protein in relation to patient survival still exists. Cyclin D₁ has been reported to be a prognostic marker in invasive breast cancer and has been associated with both a less aggressive ER-positive phenotype [20,22] and also with an adverse clinical outcome [18]. These conflicting findings can potentially be explained by the low patient numbers analysed and/or methodological discrepancies. To clarify the importance of cyclin D₁ in breast cancer we therefore analysed the expression of cyclin D₁ in different subcellular localisations, using a previously validated antibody [36],

as well as the gene amplification status by the well-established CISH technique in a large, well-characterised randomised patient cohort including more than 1,000 patients with ER-positive breast cancers. Our data support studies indicating that low cyclin D₁ protein expression as well as *CCND1* amplification are linked to tumour aggressiveness and increased risk of disease recurrence in ER-positive postmenopausal breast cancer [23,26]. Similar findings have been observed for HER2, where both high expression linked to amplification and low expression are linked to poor outcome [43].

Amplification of *CCND1* was observed in 8.7% of the tumours, which is slightly lower than the frequency of 10 to 15% generally reported, even though some groups have demonstrated a lower percentage of *CCND1*-amplified tumours [15,44,45]. The slightly lower fraction of *CCND1*-amplified cases may be due to all patients being ER-positive or due to methodological differences and different cutoff points for defining amplification between studies. In addition, the use of TMAs has certain

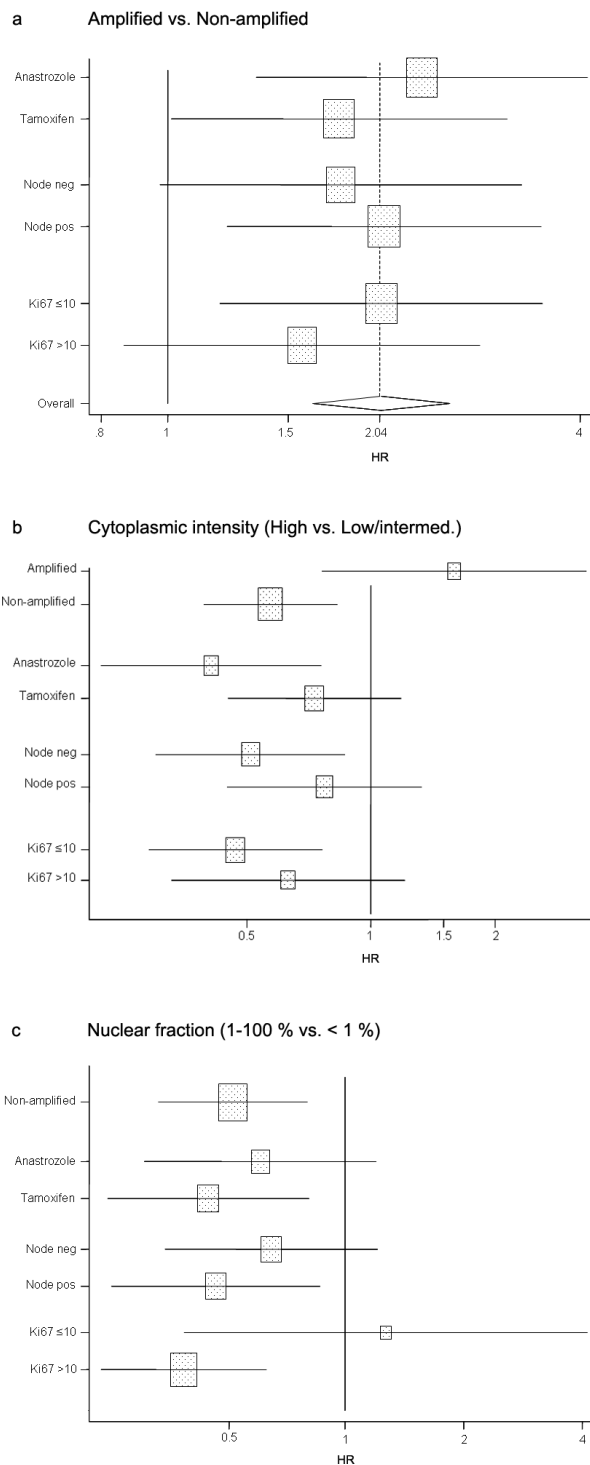
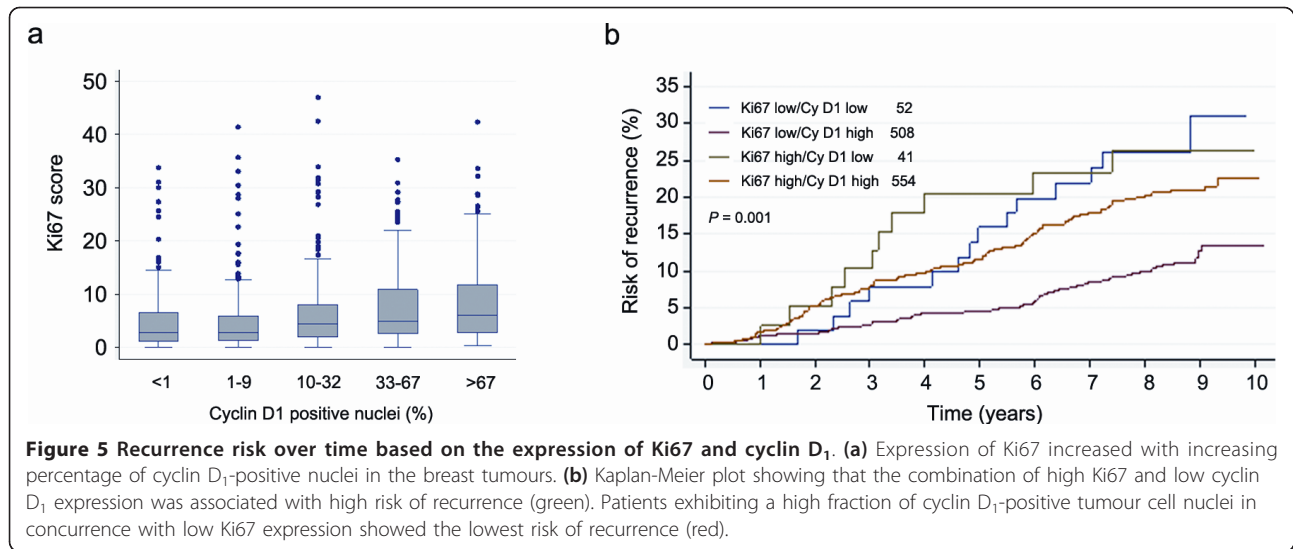


Figure 4 Forest plot showing the effect of *CCND1* amplification, cytoplasmic and nuclear cyclin D₁ expression. (a) Amplified against nonamplified breast cancers in the subgroups of treatment, nodal status and Ki67. **(b)** High cytoplasmic intensity against low or intermediate intensity. **(c)** Nuclear fraction of 1 to 100% against < 1% positive nuclei. Reference population for all subgroups was nonamplified patients (except for amplification status). HR, hazard ratio; neg, negative; pos, positive.



limitations; however, this technique is indispensable when analysing large patient materials and is today a well-accepted approach for large-scale tumour sample analysis. In agreement with previous studies, gene amplification of *CCND1* was associated with an overall adverse clinical outcome. The observed positive correlation between nuclear cyclin D₁ expression and tumour grade and proliferation suggests a link between cyclin D₁ and aggressive disease. In contrast, both higher nuclear expression and high cytoplasmic expression of cyclin D₁ was instead associated with a decreased recurrence risk. Despite a positive association between cyclin D₁ protein and *CCND1* amplification status, both low nuclear fraction of cyclin D₁ and *CCND1* amplification were linked to earlier disease recurrence independently of other clinicopathological parameters - hence both factors serve as prognostic markers in endocrine-treated, ER-positive postmenopausal breast cancer. In patients not displaying *CCND1* amplification, cytoplasmic expression of cyclin D₁ was also an independent marker for longer TTR, indicating that the true prognostic value of cyclin D₁ protein expression may be obscured by the *CCND1*-amplified cases: the clinicopathological significance of cyclin D₁ expression might thus be best considered separately for amplified and nonamplified cases.

Apart from the role as a prognostic marker, cyclin D₁ has been proposed as a predictive factor for tamoxifen response, as illustrated by poor clinical outcome in patients with ER-positive tumours with high cyclin D₁ expression treated with tamoxifen [46]. These findings together with numerous experimental reports [33-35] support that cyclin D₁ overexpression might abrogate the response to tamoxifen, as previously reported by our group and others [21,46]. Our earlier discoveries have nevertheless been made in cohorts where patients were

randomly assigned to receive either no adjuvant treatment or to receive tamoxifen [21,36]. In the present study we compared the two endocrine therapies anastrozole and tamoxifen in relation to disease recurrence and cyclin D₁ status, but there were no untreated control patients. There was no significant difference in treatment response between these two adjuvant therapies by stratification for cyclin D₁ status, indicating that cyclin D₁ is not a predictive marker for differences in response to anastrozole versus tamoxifen. No conclusions can be drawn, however, regarding cyclin D₁ as a marker for general endocrine treatment resistance, since no untreated patients were available for analysis within the Trans-ATAC study. Moreover, differences in tamoxifen response in relation to cyclin D₁ in postmenopausal versus premenopausal breast cancer might exist. Our previous study reporting a potential unfavourable effect of tamoxifen included premenopausal patients exclusively, whereas this study focused exclusively on postmenopausal breast cancer cases and has shown no detrimental effect since the results for the two endocrine therapies were similar.

The relationship between cyclin D₁, proliferation and prognosis is quite complex, with a positive correlation between cyclin D₁ and Ki67 - Ki67 is associated with shorter TTR, while cyclin D₁ is associated with longer TTR. Patients showing low expression of Ki67 had a longer TTR with the highest levels of cyclin D₁ expression, whereas patients exhibiting higher levels of Ki67 had the shortest TTR with the lowest levels of cyclin D₁ expression. Multivariate analysis identified the fraction cyclin D₁-positive nuclei as a predictor of outcome independently of other clinicopathological parameters such as Ki67. These results suggest that, irrespective of proliferation status, intermediate to high expression of cyclin D₁

results in a prolonged TTR in ER-positive, postmenopausal breast cancer patients. Similar results were observed in our previous study of randomised material from premenopausal breast cancer patients [47]. The relationship between cyclin D₁, proliferation and prognosis hence seems to be complex, and this could in part be explained by potential additional functions for cyclin D₁ unrelated to proliferation control, as well as co-amplification and co-deletion of specific genes on chromosome 11q13, the locus harbouring *CCND1*.

Conclusions

This study confirms that the cyclin D₁ status provides independent prognostic information regarding ER-positive, postmenopausal breast cancers, supporting its emerging role as a biomarker that might be useful in the clinic. Our results demonstrate that high expression of cyclin D₁ was associated with a reduced risk of recurrences, whereas amplification of the *CCND1* gene was linked to an aggressive disease. Finally, no difference in response to anastrozole compared with tamoxifen was observed according to expression of cyclin D₁ gene amplification or protein expression.

Additional material

Additional file 1: Supplementary Table 1 showing the distribution of cyclin D₁ staining categories.

Abbreviations

ATAC: Arimidex, Tamoxifen, Alone or in Combination; CI: confidence interval; CISH: chromogenic *in situ* hybridisation; ER: oestrogen receptor; HR: hazard ratio; TMA: tissue microarray; TTR: time to recurrence.

Acknowledgements

The authors thank Elise Nilsson for excellent technical implementation. This study was supported by grants from the Swedish Cancer Society, the Swedish Research Council, the Knut and Alice Wallenberg Foundation, Malmö University Hospital Research and Cancer Funds, Lund University Research Funds, South Swedish and South-East Swedish Breast Cancer groups and Breakthrough Breast Cancer Unit, Manchester, UK.

Author details

¹Center for Molecular Pathology, Department of Laboratory Medicine, Lund University, Malmö University Hospital, SE-205 02 Malmö, Sweden. ²Breakthrough Breast Cancer Research Unit, School of Cancer, Enabling Sciences and Technology, University of Manchester, Manchester Academic Health Science Centre Paterson Institute for Cancer Research, The Christie NHS Foundation Trust, Wilmslow Road, Manchester M20 4BX, UK. ³Cancer Research UK Centre for Epidemiology, Mathematics and Statistics, Queen Mary University of London, Wolfson Institute of Preventive Medicine, London EC1M 6BQ, UK. ⁴Breakthrough Breast Cancer Research Centre, Institute of Cancer Research, 237 Fulham Road, London SW3 6JB, UK. ⁵Royal Marsden Hospital, 237 Fulham Road, London SW3 6JJ, UK. ⁶Sahlgrenska Cancer Center, University of Gothenburg, 405 30 Göteborg, Sweden.

Authors' contributions

KL carried out the immunohistochemical and CISH assessments, participated in the study design and drafted the manuscript. MB assisted with evaluation of the immunohistochemistry. SP performed the statistical analyses. JC

designed the clinical trial, assembled trial data, and planned and performed the statistical analyses. JS assembled trial data. LZ assembled trial data. AH designed the clinical trial and collected clinical data. MD designed the clinical trial and collected clinical data, and initiated and conceived the current study. GL initiated and conceived the study, supervised interpretation of the data, took part in the immunohistochemical assessments and evaluation of CISH, and helped to draft the manuscript. All authors took part in data interpretation, writing the report and approval of the final version of the manuscript.

Competing interests

JC has acted as a consultant and/or on advisory boards for AstraZeneca and received commercial research grants from AstraZeneca. AH has acted as a consultant and/or on advisory boards for AstraZeneca, GSK, Pfizer, Roche and Amgen, and has received honoraria from AstraZeneca. MD receives paid advisory boards and research funding from each of Novartis, AstraZeneca and Roche. The remaining authors declare that they have no competing interests.

Received: 5 August 2011 Revised: 18 January 2012

Accepted: 4 April 2012 Published: 4 April 2012

References

1. Howell A, Dowsett M: **Recent advances in endocrine therapy of breast cancer.** *BMJ* 1997, **315**:863-866.
2. Yoshida M, Haybittle JL, Davies C, Mason BH, Wilcken N, Ploner M, Yosef HMA, Lobelle JP, Peek U, Powell J, Mauriac L, Piccart MJ, Price JJ, Hopperets PSGJ, Ragaz J, Weiss RB, Abu-Zahra HT, Portnoj SM, Riley D, Gordon NH, Davis HL, Naja A, Romestaing P, Dubois JB, Mace-Lesech J, Rambert P, Barkmanova J, Owen JR, Meier P, Swindell R: **Effects of chemotherapy and hormonal therapy for early breast cancer on recurrence and 15-year survival: an overview of the randomised trials.** *Lancet* 2005, **365**:1687-1717.
3. Brodie AM, Njar VC: **Aromatase inhibitors in advanced breast cancer: mechanism of action and clinical implications.** *J Steroid Biochem Mol Biol* 1998, **66**:1-10.
4. Geisler J, King N, Dowsett M, Ottestad L, Lundgren S, Walton P, Kormeset PO, Lonning PE: **Influence of anastrozole (Arimidex), a selective, non-steroidal aromatase inhibitor, on in vivo aromatisation and plasma oestrogen levels in postmenopausal women with breast cancer.** *Br J Cancer* 1996, **74**:1286-1291.
5. Baum M, Budzar AU, Cuzick J, Forbes J, Houghton JH, Klijn JG, Sakhmoud T: **Anastrozole alone or in combination with tamoxifen versus tamoxifen alone for adjuvant treatment of postmenopausal women with early breast cancer: first results of the ATAC randomised trial.** *Lancet* 2002, **359**:2131-2139.
6. Howell A, Cuzick J, Baum M, Budzar A, Dowsett M, Forbes JF, Hochtboes G, Houghton J, Locker GY, Tobias JS: **Results of the ATAC (Arimidex, Tamoxifen, Alone or in Combination) trial after completion of 5 years' adjuvant treatment for breast cancer.** *Lancet* 2005, **365**:60-62.
7. Cuzick J, Sestak I, Baum M, Budzar A, Howell A, Dowsett M, Forbes JF: **Effect of anastrozole and tamoxifen as adjuvant treatment for early-stage breast cancer: 10-year analysis of the ATAC trial.** *Lancet Oncol* 2010, **11**:1135-1141.
8. Ormandy CJ, Musgrove EA, Hui R, Daly RJ, Sutherland RL: **Cyclin D₁, EMS1 and 11q13 amplification in breast cancer.** *Breast Cancer Res Treat* 2003, **78**:323-335.
9. Hui R, Ball JR, Macmillan RD, Kenny FS, Prall OW, Campbell DH, Cornish AL, McClelland RA, Daly RJ, Forbes JF, Musgrove EA, Robertson JF, Nicholson RL, Sutherland RL: **EMS1 gene expression in primary breast cancer: relationship to cyclin D₁ and oestrogen receptor expression and patient survival.** *Oncogene* 1998, **17**:1053-1059.
10. Brown LA, Johnson K, Leung S, Bismar TA, Benitez J, Foulkes WD, Huntsman DG: **Co-amplification of CCND1 and EMSY is associated with an adverse outcome in ER-positive tamoxifen-treated breast cancers.** *Breast Cancer Res Treat* 2010, **121**:347-54.
11. Sherr CJ, Roberts JM: **CDK inhibitors: positive and negative regulators of G₁-phase progression.** *Genes Dev* 1999, **13**:1501-1512.
12. Jiang W, Kahn SM, Zhou P, Zhang YJ, Cacace AM, Infante AS, Doi S, Santella RM, Weinstein IB: **Overexpression of cyclin D₁ in rat fibroblasts**

- causes abnormalities in growth control, cell cycle progression and gene expression. *Oncogene* 1993, **8**:3447-3457.
13. Zhou P, Jiang W, Zhang YJ, Kahn SM, Schieren I, Santella RM, Weinstein IB: Antisense to cyclin D₁ inhibits growth and reverses the transformed phenotype of human esophageal cancer cells. *Oncogene* 1995, **11**:571-580.
 14. Wang TC, Cardiff RD, Zukerberg L, Lees E, Arnold A, Schmidt EV: Mammary hyperplasia and carcinoma in MMTV-cyclin D₁ transgenic mice. *Nature* 1994, **369**:669-671.
 15. Gillett C, Fantl V, Smith R, Fisher C, Bartek J, Dickson C, Barnes D, Peters G: Amplification and overexpression of cyclin D₁ in breast cancer detected by immunohistochemical staining. *Cancer Res* 1994, **54**:1812-1817.
 16. Bartkova J, Lukas J, Muller H, Lutzhoft D, Strauss M, Bartek J: Cyclin D₁ protein expression and function in human breast cancer. *Int J Cancer* 1994, **57**:353-361.
 17. McIntosh GG, Anderson JJ, Milton I, Steward M, Parr AH, Thomas MD, Henry JA, Angus B, Lennard TW, Horne CH: Determination of the prognostic value of cyclin D₁ overexpression in breast cancer. *Oncogene* 1995, **11**:885-891.
 18. Kenny FS, Hui R, Musgrove EA, Gee JM, Blamey RW, Nicholson RI, Sutherland RL, Robertson JF: Overexpression of cyclin D₁ messenger RNA predicts for poor prognosis in estrogen receptor-positive breast cancer. *Clin Cancer Res* 1999, **5**:2069-2076.
 19. Michalides R, Hageman P, van Tinteren H, Houben L, Wientjens E, Klompmaaker R, Peterse J: A clinicopathological study on overexpression of cyclin D₁ and of p53 in a series of 248 patients with operable breast cancer. *Br J Cancer* 1996, **73**:728-734.
 20. Gillett C, Smith P, Gregory W, Richards M, Millis R, Peters G, Barnes D: Cyclin D₁ and prognosis in human breast cancer. *Int J Cancer* 1996, **69**:92-99.
 21. Stendahl M, Kronblad A, Ryden L, Emdin S, Bengtsson NO, Landberg G: Cyclin D₁ overexpression is a negative predictive factor for tamoxifen response in postmenopausal breast cancer patients. *Br J Cancer* 2004, **90**:1942-1948.
 22. Hwang TS, Han HS, Hong YC, Lee HJ, Paik NS: Prognostic value of combined analysis of cyclin D₁ and estrogen receptor status in breast cancer patients. *Pathol Int* 2003, **53**:74-80.
 23. Naidu R, Wahab NA, Yadav MM, Kutty MK: Expression and amplification of cyclin D₁ in primary breast carcinomas: relationship with histopathological types and clinico-pathological parameters. *Oncol Rep* 2002, **9**:409-416.
 24. Dickson C, Fantl V, Gillett C, Brookes S, Bartek J, Smith R, Fisher C, Barnes D, Peters G: Amplification of chromosome band 11q13 and a role for cyclin D₁ in human breast cancer. *Cancer Lett* 1995, **90**:43-50.
 25. Buckley MF, Sweeney KJ, Hamilton JA, Sini RL, Manning DL, Nicholson RI, deFazio A, Watts CK, Musgrove EA, Sutherland RL: Expression and amplification of cyclin genes in human breast cancer. *Oncogene* 1993, **8**:2127-2133.
 26. Bieche I, Olivi M, Nagues C, Vidaud M, Lidereau R: Prognostic value of CCND1 gene status in sporadic breast tumours, as determined by real-time quantitative PCR assays. *Br J Cancer* 2002, **86**:580-586.
 27. Clarke R, Leonessa F, Welch JN, Skaar TC: Cellular and molecular pharmacology of antiestrogen action and resistance. *Pharmacol Rev* 2001, **53**:25-71.
 28. Zwart W, Rondaij M, Jalink K, Sharp ZD, Mancini MA, Neeffjes J, Michalides R: Resistance to antiestrogen arzoxifene is mediated by overexpression of cyclin D₁. *Mol Endocrinol* 2009, **23**:1335-1345.
 29. Le Goff P, Montano MM, Schodin DJ, Katzenellenbogen BS: Phosphorylation of the human estrogen receptor. Identification of hormone-regulated sites and examination of their influence on transcriptional activity. *J Biol Chem* 1994, **269**:4458-4466.
 30. Kato S, Endoh H, Masuhiro Y, Kitamoto T, Uchiyama S, Sasaki H, Masushige S, Gotoh Y, Nishida E, Kawashima H, Metzger D, Chambon P: Activation of the estrogen receptor through phosphorylation by mitogen-activated protein kinase. *Science* 1995, **270**:1491-1494.
 31. Pietras RJ, Arboleda J, Reese DM, Wongvipat N, Pegram MD, Ramos L, Gorman CM, Parker MG, Sliwkowski MX, Slamon DJ: HER-2 tyrosine kinase pathway targets estrogen receptor and promotes hormone-independent growth in human breast cancer cells. *Oncogene* 1995, **10**:2435-2446.
 32. Holm C, Rayala S, Jirstrom K, Stal O, Kumar R, Landberg G: Association between Pak1 expression and subcellular localization and tamoxifen resistance in breast cancer patients. *J Natl Cancer Inst* 2006, **98**:671-680.
 33. Zwijsen RM, Wientjens E, Klompmaaker R, van der Sman J, Bernards R, Michalides RJ: CDK-independent activation of estrogen receptor by cyclin D₁. *Cell* 1997, **88**:405-415.
 34. Zwijsen RM, Buckle RS, Hijmans EM, Loomans CJ, Bernards R: Ligand-independent recruitment of steroid receptor coactivators to estrogen receptor by cyclin D₁. *Genes Dev* 1998, **12**:3488-3498.
 35. Wilcken NR, Prall OW, Musgrove EA, Sutherland RL: Inducible overexpression of cyclin D₁ in breast cancer cells reverses the growth-inhibitory effects of antiestrogens. *Clin Cancer Res* 1997, **3**:849-854.
 36. Jirstrom K, Stendahl M, Ryden L, Kronblad A, Bendahl PO, Stal O, Landberg G: Adverse effect of adjuvant tamoxifen in premenopausal breast cancer with cyclin D₁ gene amplification. *Cancer Res* 2005, **65**:8009-8016.
 37. Dowsett M, Allred C, Knox J, Quinn E, Salter J, Wale C, Cuzick J, Houghton J, Williams N, Mallon E, Bishop H, Ellis I, Larsimont D, Sasano H, Carder P, Cussac AL, Knox F, Speirs V, Forbes J, Buzdar A: Relationship between quantitative estrogen and progesterone receptor expression and human epidermal growth factor receptor 2 (HER-2) status with recurrence in the Arimidex, Tamoxifen, Alone or in Combination trial. *J Clin Oncol* 2008, **26**:1059-1065.
 38. Harvey JM, Clark GM, Osborne CK, Allred DC: Estrogen receptor status by immunohistochemistry is superior to the ligand-binding assay for predicting response to adjuvant endocrine therapy in breast cancer. *J Clin Oncol* 1999, **17**:1474-1481.
 39. McShane LM, Altman DG, Sauerbrei W, Taube SE, Gion M, Clark GM: Reporting recommendations for tumor marker prognostic studies (REMARK). *J Natl Cancer Inst* 2005, **97**:1180-1184.
 40. Arnould L, Denoux Y, MacGrogan G, Penault-Llorca F, Fiche M, Treilleux I, Mathieu MC, Vincent-Salomon A, Vilain MO, Couturier J: Agreement between chromogenic in situ hybridisation (CISH) and FISH in the determination of HER2 status in breast cancer. *Br J Cancer* 2003, **88**:1587-1591.
 41. Cuzick J: A Wilcoxon-type test for trend. *Stat Med* 1985, **4**:87-90.
 42. Dowsett M, Cuzick J, Wale C, Forbes J, Mallon EA, Salter J, Quinn E, Dunbier A, Baum M, Buzdar A, Howell A, Bugarini R, Baehner FL, Shak S: Prediction of risk of distant recurrence using the 21-gene recurrence score in node-negative and node-positive postmenopausal patients with breast cancer treated with anastrozole or tamoxifen: a TransATAC study. *J Clin Oncol* 2008, **26**:1829-1834.
 43. Camp RL, Dolled-Filhart M, King BL, Rimm DL: Quantitative analysis of breast cancer tissue microarrays shows that both high and normal levels of HER2 expression are associated with poor outcome. *Cancer Res* 2003, **63**:1445-1448.
 44. Weinstein-Saslow D, Merino MJ, Manrow RE, Lawrence JA, Bluth RF, Wittenbel KD, Simpson JF, Page DL, Steeg PS: Overexpression of cyclin D mRNA distinguishes invasive and in situ breast carcinomas from non-malignant lesions. *Nat Med* 1995, **1**:1257-1260.
 45. Zukerberg LR, Yang WJ, Gadd M, Thor AD, Koerner FC, Schmidt EV, Arnold A: Cyclin D₁ (PRAD1) protein expression in breast cancer: approximately one-third of infiltrating mammary carcinomas show overexpression of the cyclin D₁ oncogene. *Mod Pathol* 1995, **8**:560-567.
 46. Rudas M, Lehnert M, Huynh A, Jakesz R, Singer C, Lax S, Schippering W, Dietze O, Greil R, Stiglbauer W, Kwasny W, Grill R, Stierer M, Gnant MF, Filipits M: Cyclin D₁ expression in breast cancer patients receiving adjuvant tamoxifen-based therapy. *Clin Cancer Res* 2008, **14**:1767-1774.
 47. Lehn S, Tobin NP, Berglund P, Nilsson K, Sims AH, Jirstrom K, Harkonen P, Lamb R, Landberg G: Down-regulation of the oncogene cyclin D₁ increases migratory capacity in breast cancer and is linked to unfavorable prognostic features. *Am J Pathol* 2010, **177**:2886-2897.

doi:10.1186/bcr3161

Cite this article as: Lundgren et al.: Effects of cyclin D₁ gene amplification and protein expression on time to recurrence in postmenopausal breast cancer patients treated with anastrozole or tamoxifen: a TransATAC study. *Breast Cancer Research* 2012 **14**:R57.