



LUND UNIVERSITY

Dendrokronologisk analys. Medeltida kulturlager i Uppsala

Eggertsson, Olafur

1995

Document Version:
Förlagets slutgiltiga version

[Link to publication](#)

Citation for published version (APA):
Eggertsson, O. (1995). *Dendrokronologisk analys. Medeltida kulturlager i Uppsala*. Lund University.

Total number of authors:
1

General rights

Unless other specific re-use rights are stated the following general rights apply:
Copyright and moral rights for the publications made accessible in the public portal are retained by the authors and/or other copyright owners and it is a condition of accessing publications that users recognise and abide by the legal requirements associated with these rights.

- Users may download and print one copy of any publication from the public portal for the purpose of private study or research.
- You may not further distribute the material or use it for any profit-making activity or commercial gain
- You may freely distribute the URL identifying the publication in the public portal

Read more about Creative commons licenses: <https://creativecommons.org/licenses/>

Take down policy

If you believe that this document breaches copyright please contact us providing details, and we will remove access to the work immediately and investigate your claim.

LUND UNIVERSITY

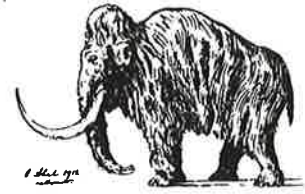
PO Box 117
221 00 Lund
+46 46-222 00 00

7 December 1995



LUND UNIVERSITY

DEPARTMENT OF QUATERNARY GEOLOGY
KVARTÄRGEOLOGISKA AVDELNINGEN



DENDROKRONOLOGISK ANALYS
Laboratoriet för Vedanatomi och Dendrokronologi

Uppdragsgivare: Linda Qviström, RAÄ, UV Uppsala, Box 137, 751 04 Uppsala

Socken/Stad: Uppsala stad **Prov nr:** 1-22 **Antal prover:** 22

Dendrokronologiskt objekt: Konstruktioner i medeltida kulturlager

Bearbetat av: Ólafur Eggertsson

Information: Av de 22 proverna, kasserades 10 på grund av deras dåliga skick, i bland var de mest lera. Totalt kunde 9 prov dateras.

Materialet var mestadels tall utom ett prov (nr. 6) men de var av ek.

Följande prover kasserades: 1,2,3,5,11,13,14,15,16,22.

Resultat:

CATRAS dendro nr:	Trädslag:	Prov nr:	Datering (fällningstid)*
62680	tall	4	e 1321
81	ek	6	e 1289
82	tall	7	ingen datering
83	-	8	do
84	-	9	do
85	-	10	e 1227
86	-	12	e 1350
87	-	17	e 1330
88	-	18	e 1526
89	-	19	e 1515
90	-	20	e 1363
91	-	21	(e) = 1380

* e efter, e = efter eller lika med, B Bark