



LUND UNIVERSITY

Dendrokronologisk analys. Arkeologisk undersökning i Gamleby, Västervik, Småland

Eggertsson, Olafur

1998

Document Version:
Förlagets slutgiltiga version

[Link to publication](#)

Citation for published version (APA):
Eggertsson, O. (1998). *Dendrokronologisk analys. Arkeologisk undersökning i Gamleby, Västervik, Småland.* Lund University.

Total number of authors:
1

General rights

Unless other specific re-use rights are stated the following general rights apply:
Copyright and moral rights for the publications made accessible in the public portal are retained by the authors and/or other copyright owners and it is a condition of accessing publications that users recognise and abide by the legal requirements associated with these rights.

- Users may download and print one copy of any publication from the public portal for the purpose of private study or research.
- You may not further distribute the material or use it for any profit-making activity or commercial gain
- You may freely distribute the URL identifying the publication in the public portal

Read more about Creative commons licenses: <https://creativecommons.org/licenses/>

Take down policy

If you believe that this document breaches copyright please contact us providing details, and we will remove access to the work immediately and investigate your claim.

LUND UNIVERSITY

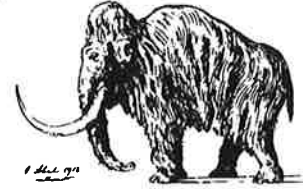
PO Box 117
221 00 Lund
+46 46-222 00 00

16 februari 1998



LUND UNIVERSITY

DEPARTMENT OF QUATERNARY GEOLOGY
KVARTÄRGEOLOGISKA ÄVDELNINGEN



DENDROKRONOLOGISK ANALYS
Laboratoriet för Vedanatomi och Dendrokronologi

Uppdragsgivare: Pierre Gustafsson, Kulbackens Museum, Box 257, 593 23 Västervik
Socken/Stad: Gamleby, Kalmar län **Prov nr:** **Antal prover:** 7
Dendrokronologiskt objekt: Träanläggning, troligen en kavelbro.

Bearbetat av: Ólafur Eggertsson / Hans Linderson

Information: Det gick ej att datera proverna pga: 1) trädslag gran. 2) deformerade prover *in situ*.

Resultat:

| CATRAS dendro nr: | Trädslag | Antal radie | Antal årsringar | prov nr: | Datering (fällningstid)* |
|-------------------|----------|-------------|-----------------|----------|--------------------------|
| 75340 | Gran | 1 | 60 | | Ej daterad |
| 75341 | Gran | 1 | 79 | | Ej daterad |
| 75342 | Gran | 3 | 80 | | Ej daterad |

Mätresultaten kommer att bevaras på laboratoriet och utnyttjas i universitetets forskning.

Proverna kommer att ingå i RAÄ's arkiv och förvaltas av laboratoriet

Med hälsning och önskan om fortsatt samarbete

FD Ólafur Eggertsson