



# LUND UNIVERSITY

## beta-Cell Specific Overexpression of GPR39 Protects against Streptozotocin-Induced Hyperglycemia

Egerod, Kristoffer L.; Jin, Chunyu; Petersen, Pia Steen; Wierup, Nils; Sundler, Frank; Holst, Birgitte; Schwartz, Thue W.

*Published in:*  
International Journal of Endocrinology

*DOI:*  
[10.1155/2011/401258](https://doi.org/10.1155/2011/401258)

2011

[Link to publication](#)

*Citation for published version (APA):*  
Egerod, K. L., Jin, C., Petersen, P. S., Wierup, N., Sundler, F., Holst, B., & Schwartz, T. W. (2011). beta-Cell Specific Overexpression of GPR39 Protects against Streptozotocin-Induced Hyperglycemia. *International Journal of Endocrinology*, Article 401258. <https://doi.org/10.1155/2011/401258>

*Total number of authors:*  
7

### General rights

Unless other specific re-use rights are stated the following general rights apply:  
Copyright and moral rights for the publications made accessible in the public portal are retained by the authors and/or other copyright owners and it is a condition of accessing publications that users recognise and abide by the legal requirements associated with these rights.

- Users may download and print one copy of any publication from the public portal for the purpose of private study or research.
- You may not further distribute the material or use it for any profit-making activity or commercial gain
- You may freely distribute the URL identifying the publication in the public portal

Read more about Creative commons licenses: <https://creativecommons.org/licenses/>

### Take down policy

If you believe that this document breaches copyright please contact us providing details, and we will remove access to the work immediately and investigate your claim.

LUND UNIVERSITY

PO Box 117  
221 00 Lund  
+46 46-222 00 00



## Research Article

# $\beta$ -Cell Specific Overexpression of GPR39 Protects against Streptozotocin-Induced Hyperglycemia

Kristoffer L. Egerod,<sup>1,2</sup> Chunyu Jin,<sup>1,2</sup> Pia Steen Petersen,<sup>1,2</sup> Nils Wierup,<sup>3</sup>  
Frank Sundler,<sup>3</sup> Birgitte Holst,<sup>1,2</sup> and Thue W. Schwartz<sup>1,2</sup>

<sup>1</sup>Laboratory for Molecular Pharmacology, Department of Neuroscience and Pharmacology, University of Copenhagen, Blegdamsvej 3, 2200 Copenhagen, Denmark

<sup>2</sup>Section for Metabolic Receptology and Enteroendocrinology, Novo Nordisk Foundation Center for Basic Metabolic Research, University of Copenhagen, Blegdamsvej 3, 2200 Copenhagen, Denmark

<sup>3</sup>Division of Diabetes, Metabolism, and Endocrinology, Department of Experimental Medical Science, Lund University, Lund, Sweden

Correspondence should be addressed to Kristoffer L. Egerod, egerod@sund.ku.dk

Received 24 June 2011; Accepted 7 September 2011

Academic Editor: Maria L. Dufau

Copyright © 2011 Kristoffer L. Egerod et al. This is an open access article distributed under the Creative Commons Attribution License, which permits unrestricted use, distribution, and reproduction in any medium, provided the original work is properly cited.

Mice deficient in the zinc-sensor GPR39, which has been demonstrated to protect cells against endoplasmatic stress and cell death *in vitro*, display moderate glucose intolerance and impaired glucose-induced insulin secretion. Here, we use the Tet-On system under the control of the proinsulin promoter to selectively overexpress *GPR39* in the  $\beta$  cells in a double transgenic mouse strain and challenge them with multiple low doses of streptozotocin, which in the wild-type littermates leads to a gradual increase in nonfasting glucose levels and glucose intolerance observed during both food intake and OGTT. Although the overexpression of the constitutively active GPR39 receptor in animals not treated with streptozotocin appeared by itself to impair the glucose tolerance slightly and to decrease the  $\beta$ -cell mass, it nevertheless totally protected against the gradual hyperglycemia in the streptozotocin-treated animals. It is concluded that GPR39 functions in a  $\beta$ -cell protective manner and it is suggested that it is involved in some of the beneficial,  $\beta$ -cell protective effects observed for  $Zn^{++}$  and that GPR39 may be a target for antidiabetic drug intervention.

## 1. Introduction

GPR39 is a member of the ghrelin receptor family, all of which are peptide receptors described to be involved in the peripheral and/or central control of appetite, GI tract function, energy homeostasis, and metabolism [1–5]. The *GPR39* locus is rather complex with an overlapping antisense gene *LYPD1* and the occurrence of alternative splicing [6]. Importantly, however, the full-length, functional GPR39 receptor is expressed exclusively in peripheral, endocrine, and metabolic organs such as the endocrine pancreas, the liver, the kidney, the GI tract, and the white adipose tissue [6, 7].

GPR39 functions as a zinc sensor being activated by physiological concentrations of  $Zn^{++}$  which is particularly interesting in the pancreatic islets where  $Zn^{++}$  is released in relatively large amounts together with insulin [8, 9].

Although it was reported that a peptide fragment of the ghrelin precursor called obestatin could act as an agonist for GPR39 [10], this could not be confirmed [11–14] and the original report was later retracted [15]. As observed for key members of this receptor family such as the ghrelin receptor and the neurotensin NT2 receptor, GPR39 signals with high ligand independent or constitutive activity [2, 3]. This is observed in the Gq pathway as measured by inositol phosphate accumulation and, for example, in activation of serum-responsive-element- (SRE-) regulated transcriptional activity mainly mediated through the G12/13 pathway [2].

Unchallenged *Gpr39*-deficient mice have a rather modest overall phenotype [7, 14]. However, more careful studies both by Tremblay and coworkers and by our group revealed that GPR39 deficiency is associated with  $\beta$ -cell dysfunction including decreased expression of key regulatory genes and impaired glucose-induced insulin secretion, for example

from isolated perfused pancreatic islets as well as moderate glucose intolerance *in vivo* [16, 17]. The mechanism by which GPR39 is important for  $\beta$ -cell function is unclear; however, it could be related to the recently described, general cell protective effect of GPR39 [18].

In the present study, we exploit the Tet-On system to create a “knock-in” transgenic mouse strain with inducible overexpression of human *GPR39* selectively in pancreatic  $\beta$  cells. The mice express the human *GPR39* gene under the control of the tetracycline operator and the reverse tetracycline-controlled transactivator (rtTA) driven by the rat insulin promoter (RIP) [19, 20]. Because GPR39 displays a high degree of constitutive activity an increased expression of GPR39 will be directly associated with an increased receptor signaling activity in the  $\beta$  cells independently of an endogenous ligand.

## 2. Materials and Methods

**2.1. The Transgenic Mouse.** B6-TgH(tetGPR39/RIP-rtTA) transgenic mice were generated by crossing heterozygous RIP-rtTA transgenic mice (kindly provided by Dr. Yuval Dor) with heterozygous tetGPR39 transgenic mice (Figure 1). The tetGPR39 mice were acquired from Nucleis, and briefly a construct consisting of an N-terminal FLAG tag linked to the total coding region for human *GPR39* followed by the SV40 polyA signal was inserted into the HPRT locus through target homologous recombination.

The double transgenic mice were backcrossed into C57BL/6 for at least three generations and littermates were used as control.

To verify doxycycline- (DOX-) induced GPR39 expression, 3 tetGPR39/RIP-rtTA transgenic mice and 6 WT littermates were given DOX in the drinking water (1 mg/mL), whilst 3 tetGPR39/RIP-rtTA mice were given normal water (mock) to evaluate leakiness of the system. After 6 days of DOX or mock treatment, mice were sacrificed and pancreas was isolated for immunohistochemistry and real-time quantitative PCR (QPCR).

**2.2. Outline for the Experimental Setup.** Mice were treated with multiple low-dose STZ to induce hyperglycemia [21]. Briefly, intraperitoneal injection (IP) of 40 mg/kg STZ (diluted in citric acid pH = 4) was carried out on five consecutive days.

Two groups consisting of 11 tetGPR39/RIP-rtTA transgenic mice and 11 wild-type littermates were treated with low-dose STZ injections. In parallel two groups consisting of 7 tetGPR39/RIP-rtTA transgenic mice and 6 wild-type littermates were mock treated with vehicle injections for 5 days. DOX treatment was initiated 3 days prior to the injection and maintained throughout the whole experiment for all four groups.

Using a glucometer (Ascensia Elite XL Diabetes Care System, Bayer HealthCare) nonfasting blood glucose was measured twice a week in tail blood to follow the development of hyperglycemia. The nonfasting blood glucose levels were analyzed by repeated measures (mixed model) ANOVA using GraphPad Prism version 5.0a.

At day 30, blood glucose and insulin levels in response to feeding were measured. Mice were fasted for 16 hours prior to *ad libitum* feeding whilst tail blood was obtained at times –30, 0, 20, 40, and 85 minutes to monitor blood glucose levels, and blood from the orbital sinus was collected at times 0, 20, and 40 minutes to measure plasma insulin levels using the Sensitive Rat Insulin RIA kit (Millipore). Insulin and glucose levels were analyzed by repeated measures (mixed model) ANOVA using GraphPad Prism version 5.0a.

At day 35, oral glucose tolerance test (OGTT) was performed, glucose (1.5 g/kg body weight) was administered by oral gavage, at times –30, 0, 10, 20, 30, 60, 90, and 120, minutes and blood glucose levels were measured in tail blood using a glucometer. Glucose levels were analyzed by repeated measures (mixed model) ANOVA and by a Mann-Whitney *t*-test using GraphPad Prism version 5.0a.

At day 40, the mice were sacrificed and pancreas was exsected for immunocytochemistry.

All mice used in this study were male; they were housed in a light/dark cycle of 12 hours with free access to food and water. All animal studies were conducted in accordance with international guidelines and approved by the Animal Experiments Inspectorate in Denmark, which follows the EU (86/609/EEC) guidelines.

**2.3. QPCR.** QPCR was performed using the Mx3000P (Stratagene), and the SYBR Premix Ex Taq (Takara) was used for SYBR green-based QPCR. Cycle threshold values were obtained using Stratagene Mx3000P software, and the delta-delta Ct method was used to calculate the relative fold change of RNA levels compared to a calibrator sample. Tyrosine 3-monooxygenase/tryptophan 5-monooxygenase activation protein, zeta polypeptide (Ywhaz) was used as reference gene. Primer sequences for human *GPR39*, mice *Gpr39*, and *Ywhaz* were 5'-TCC TGA GGC TGA TTG TTG TG-3', 5'-GTG TAC AGG AGC GGG TTG AT-3', 5'-AGT GAG GAG AGC CGG ACA G-3', 5'-CAG TCA TGT TTG GGT TTT GC-3', 5'-AGA CGG AAG GTG CTG AGA AA-3' and 5'-GAA GCA TTG GGG ATC AAG AA-3', respectively.

Exsected tissue was snap-frozen in liquid nitrogen and stored at –80°C until RNA was extracted using the SV Total RNA Isolation System (Promega) followed by cDNA synthesis using the ImProm-II Reverse Transcriptase (Promega).

**2.4. Immunohistochemistry and Morphometry.** The protocol has been reported [22]. Briefly, pancreata were fixed in Stefanini's solution (2% formaldehyde and 0.2% picric acid in 0.1 M PBS (pH 7.2)), rinsed in sucrose-enriched (10%) buffer, and frozen on dry ice. Thereafter sections were cut (10  $\mu$ m) and mounted on slides. The sections were stained for insulin (code 9003, dilution 1:1280; Euro-Diagnostica, Malmö, Sweden), glucagon (code 7811, dilution 1:5120; Euro-Diagnostica), and FLAG (code F7425, dilution 1:800; Sigma-Aldrich) as previously [16].

To quantify  $\beta$ -cell area, 4 sections were taken through the whole pancreas, with a distance of >100  $\mu$ m between each, according to the previously published protocols [23]. Thereafter images of all immunostained islets in each section

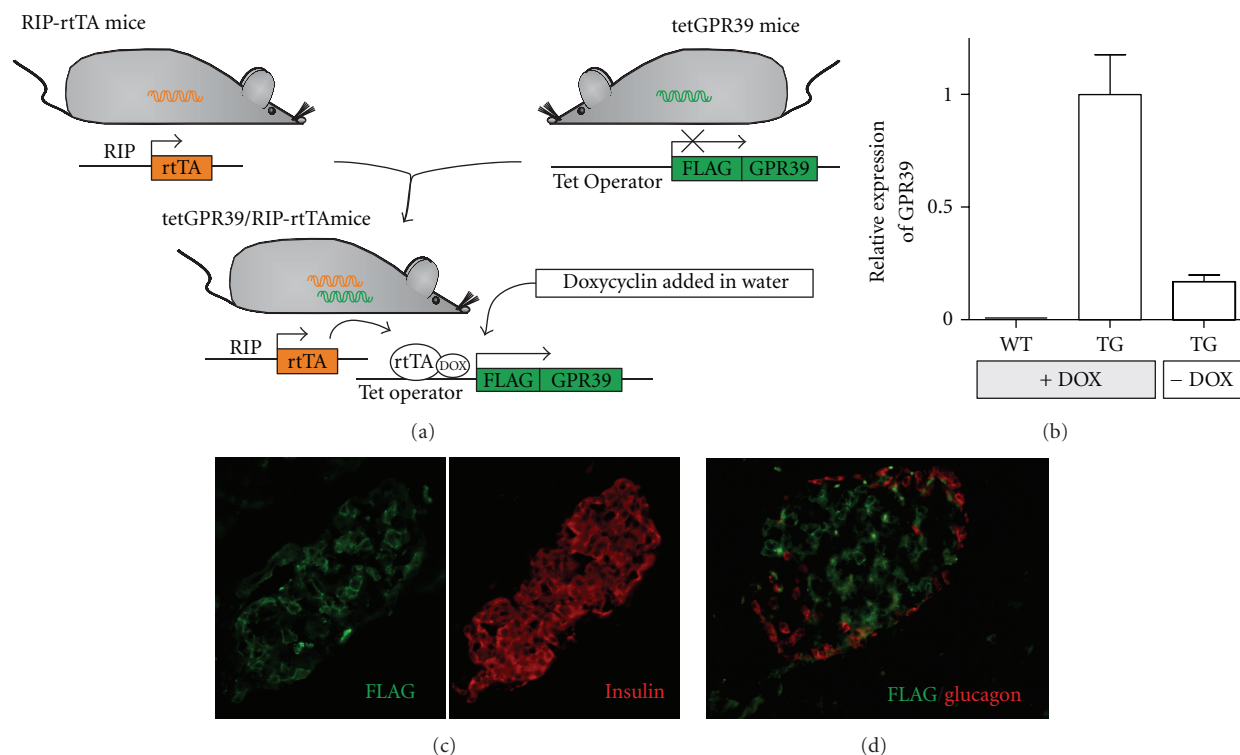


FIGURE 1: Overview of the generation of the tetGPR39/RIP-rtTA transgenic mice and demonstration of the  $\beta$ -cell specific expression of GPR39. (a) Schematic diagram of the generation of the tetGPR39/RIP-rtTA transgenic mice by crossing of the RIP-rtTA mouse with the tetGPR39 mouse. (b) QPCR specific for the transgenic FLAG-tagged human GPR39 performed on whole pancreas. (c, d) Immunohistochemistry of pancreatic islets from tetGPR39/RIP-rtTA transgenic mice, in (c, d) GPR39 was detected using the M1 anti-FLAG antibody (green). (c) Antiinsulin antibody (red). (d) Antiglucacon antibody (red).

were taken with a digital camera (Nikon DS-2Mv). The stained area was measured using BioPix iQ 2.0 software (BioPix AB, Göteborg, Sweden).  $\beta$ -cell areas were analyzed by a Mann-Whitney *t*-test using GraphPad Prism version 5.0a.

### 3. Results

The double transgenic mice strain B6-TgH(tetGPR39/RIP-rtTA) displayed tetracycline, that is, DOX inducible expression of the FLAG-tagged human *GPR39* selectively in the pancreatic  $\beta$  cells as determined by immunohistochemistry after 6 days of DOX treatment (Figure 1). As often described in general and specifically for the proinsulin-promoter-driven Tet-On system some degree of leakiness was observed [24, 25]. In our case the leakiness corresponded to one fifth of the expression of the human *GPR39* in the pancreas before DOX administration (Figure 1(b)). In accordance with this, wild-type littermates were used as controls in the functional studies.

Repeated low doses of STZ normally induce a gradual damage of  $\beta$  cells resulting in nonfasting hyperglycemia [21, 26, 27]. As shown in Figure 2(a), treatment of wild-type animals with 40 mg/kg STZ for five days as expected resulted in an increase in nonfasting glucose appearing after approximately 10 days (open squares) as compared to vehicle-treated animals (open circles)—all receiving DOX in

the drinking water throughout the experiment. In contrast, no clear increase in blood glucose was observed after STZ treatment in the *GPR39* transgenic animals (Figure 2(a), red squares). When compared to the STZ treated wild-type littermates (open squares) the *GPR39* transgenic mice displayed lower blood glucose throughout the experiment ( $P = 0.0007$ ,  $n = 11$ , two-way ANOVA).

A controlled feeding experiment was performed on day 30, which demonstrated that fasting blood glucose was normal and similar in all four groups, that is, around 5 mmol/L (Figure 2(b)). However, postprandial hyperglycemia was observed in the STZ treated wild-type animals as compared to the STZ-treated *GPR39* transgenic littermates after presentation of food and eating *ad libitum* ( $P = 0.037$ ,  $n = 11$ , two way ANOVA). In fact, the STZ-treated *GPR39* transgenic mice displayed a postprandial glucose increase similar to that observed in the two non-STZ-treated control groups (Figure 2(b)). The fasting insulin levels were also similar in all four groups of animals (Figure 2(c)). Although the postprandial serum insulin 20 min. after food intake apparently was lower in the STZ-treated wild-type animals ( $0.86 \pm 0.11$  ng/mL,  $n = 11$ ) compared to the non-STZ treated control group ( $1.10 \pm 0.09$  ng/mL,  $n = 6$ ), this did not reach statistical significance ( $P = 0.15$ , *t*-test). Importantly, just like the glucose level the serum insulin level of the STZ-treated transgenic *GPR39* animals was similar to that of the

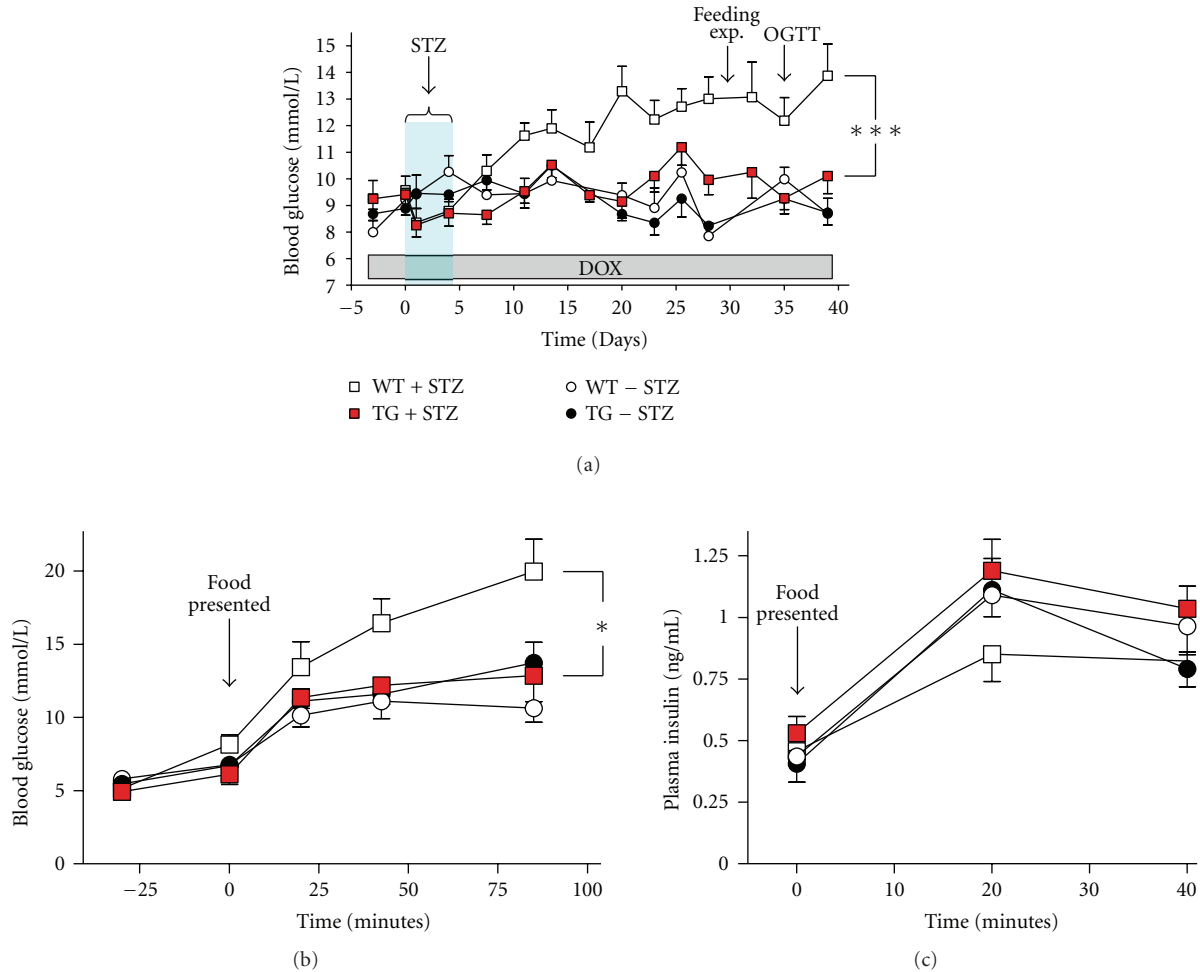


FIGURE 2: Protection against STZ-induced hyperglycemia by  $\beta$ -cell specific overexpression of GPR39 in the tetGPR39/RIP-rtTA mice. (a) Nonfasting blood glucose levels measured twice a week. DOX was given in the drinking water to all four groups of animals from day 3. A group of tetGPR39/RIP-rtTA transgenic mice (TG + STZ (red square),  $n = 11$ ) and a group of wild-type littermates (WT + STZ (open square),  $n = 11$ ) were treated with low-dose STZ injections, 40 mg/kg daily from day 0 to day 4. A group of tetGPR39/RIP-rtTA transgenic mice (TG - STZ (black circles),  $n = 7$ ) and a group of wild-type littermates (WT - STZ (open circles),  $n = 6$ ), were mock treated with vehicle injections from day 0 to day 4. (b, c) At day 28, all animals were fasted for 18 hours before given access to food at time 0: the blood glucose (b) and insulin (c) were monitored at times indicated. \* $P < 0.05$ , \*\*\* $P < 0.001$  (repeated measures (mixed model) ANOVA performed on WT + STZ versus TG + STZ).

non-STZ-treated control groups ( $1.2 \pm 0.13$  ng/mL,  $n = 11$ , Figure 2(c), red squares).

OGTT performed on day 35 revealed that the low-dose STZ treatment as expected rendered the wild-type mice glucose intolerant but not diabetic as their fasting glucose levels were normal (Figure 3(a), open squares versus open circles)—as also observed during the food test (Figure 2(b)). The transgenic overexpression of GPR39 in the  $\beta$  cells by itself seemed to impair the glucose tolerance as determined during the OGTT (Figure 3(a), black versus open circles). Nevertheless, the glucose excursions of the STZ-treated GPR39 transgenic animals appeared to be lower as compared to their STZ-treated wild-type littermates (Figure 3(a), red squares versus open squares). Except for the effect of STZ on the wild-type animals none of these differences reached statistical significance.

Immunohistochemical analysis after 40 days of treatment demonstrated a similar but opposite pattern of effects of STZ treatment on  $\beta$ -cell area as observed for blood glucose during the OGTT. That is, STZ severely reduced the  $\beta$ -cell area to 32% in the wild-type animals ( $P = 0.005$ ,  $n = 11$  STZ treated,  $n = 6$  mock treated, Mann Whitney), and, like the transgenic overexpression of GPR39 in itself impaired the glucose tolerance, it apparently also reduced the  $\beta$ -cell area, that is, to approximately 60%—although the effect was not statistically significant (Figure 4). The area of  $\beta$ -cells determined in the pancreas after STZ treatment of the transgenic animals was similar to that observed in the STZ-treated wild-type littermates. Thus, the relative effect of STZ was smaller in the GPR39 transgenic animals than in the wild-type animals.



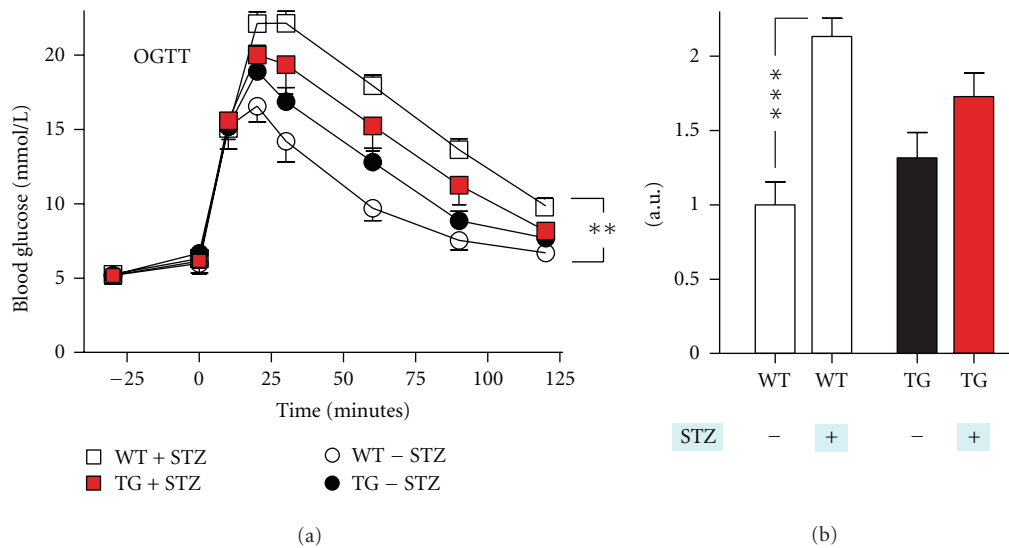


FIGURE 3: Effect of  $\beta$ -cell specific overexpression of GPR39 on oral glucose tolerance test (OGTT) after low-dose STZ treatment. (a) OGTT performed 35 days after STZ treatment (see Figure 2) in tetGPR39/RIP-rtTA transgenic (TG) mice with STZ treatment (red square)  $n = 11$ , in wild-type littermates (WT) with STZ treatment (open squares)  $n = 11$ , in WT mock-treated mice (open circles)  $n = 6$ , and in TG mock-treated mice (black circles)  $n = 7$ . \*\* $P < 0.01$  (repeated measures (mixed model) ANOVA performed WT + STZ versus WT - STZ). (b) area under the curve, \*\*\* $P < 0.001$  (Mann-Whitney  $t$ -test). a.u.: arbitrary units.

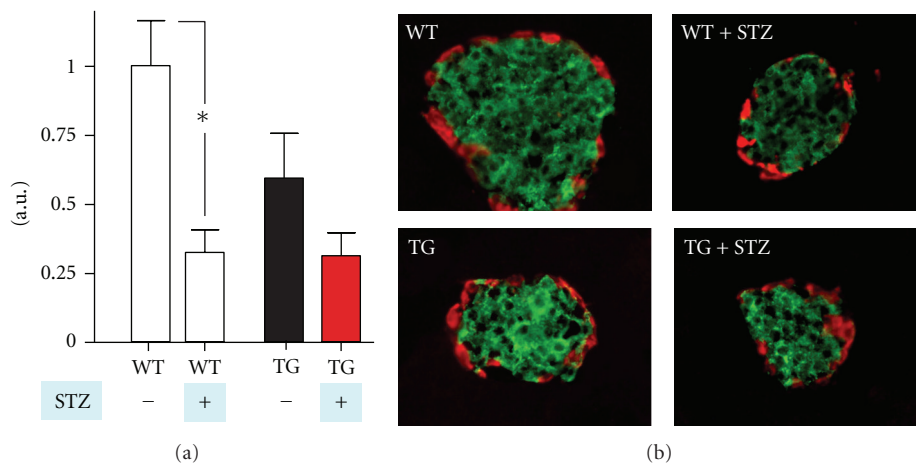


FIGURE 4: Quantification of the  $\beta$ -cell area in pancreatic islets by immunohistochemistry. (a) WT mock-treated mice (empty bars - STZ)  $n = 7$  and tetGPR39/RIP-rtTA transgenic (TG) mock-treated mice (black filled bars - STZ)  $n = 6$ . WT STZ treated (empty bars + STZ)  $n = 5$ , tetGPR39/RIP-rtTA transgenic (TG) STZ-treated mice (red filled bars + STZ)  $n = 5$ . \* $P < 0.05$  (Mann-Whitney  $t$ -test). (b) Representative islets stained with anti-insulin (green) and anti-glucagon antibodies (red). a.u.: arbitrary units.

#### 4. Discussion

It has previously been demonstrated that *Gpr39* deficiency leads to impaired  $\beta$ -cell function with decreased glucose induced insulin secretion and moderate glucose-intolerance [16, 17]. *GPR39* was in the present study overexpressed in a  $\beta$ -cell specific, inducible manner in a double transgenic strain of mice using the Tet-On system under the control of the proinsulin promoter. Although the overexpression in itself appeared to affect the  $\beta$ -cell mass and impaired the glucose tolerance slightly, it nevertheless totally protected against the gradual hyperglycemia observed after low-dose

STZ treatment of wild-type littermates. Thus, the zinc-sensor GPR39 appears to function in a  $\beta$ -cell protective manner and could accordingly be a target for antidiabetic drug intervention. It was recently shown by transgenic expression of a specifically designed 7TM receptor, which could be activated by a pharmaceutical compound that acute, selective  $G\alpha_q$  activation in the  $\beta$  cells leads to improved glucose tolerance and increased insulin secretion [28]. Since the GPR39 receptor signals mainly through  $G\alpha_q$  [2] and is normally expressed in the  $\beta$  cells, the observation of Guettier and coworkers together with the previous studies in *Gpr39*-deficient mice [16, 17] and the present study with  $\beta$ -cell

specific overexpression of *GPR39* all support the notion that *GPR39* could function as an interesting antidiabetic drug target.

***GPR39 and Zinc in Islet Protection.*** *GPR39* was originally discovered by simple homology screening for novel members of the ghrelin receptor family [29]. Interestingly, however, *GPR39* was recently “rediscovered” as one out of two, highly upregulated 7TM receptors in a naturally occurring, apoptosis-resistant cell line [18]. Subsequent transfection of *GPR39* into other cell lines protected these cells against oxidative and endoplasmic reticulum stress, which was not the case with the other receptors [18]. The notion that the zinc-sensor *GPR39* particularly in the endocrine pancreas could be involved in the adaptive, protective response to stress and cell damage is supported by the fact that apoptosis of pancreatic islet cells is associated with the release of intracellular storages of zinc from the dying cells [30]. Importantly, as we in the present study find that *GPR39* overexpression protects against the development of nonfasting hyperglycemia, zinc-sulfate-enriched drinking water has been reported to prevent STZ-induced diabetes in mice [31, 32] and, importantly, to protect against the spontaneous development of diabetes in both NOD mice and biobreeding rats [31, 33]. It is tempting to suggest that the zinc-sensor *GPR39* with its cell protective properties could be involved in some of these beneficial effects of zinc. However, *GPR39* may not only protect islets from apoptosis but may also be involved in proliferative, adaptive responses of the islets as Tremblay and coworkers found that *Gpr39*-deficient mice do not display the normal pancreatic islet hyperplasia in response to diet-induced obesity [17]. In view of the documented islet protective properties of *GPR39*, an agonist of *GPR39* could potentially be useful in the treatment of diabetes where the  $\beta$  cells are under oxidative stress [34, 35].

***Transgenic Overexpression as a Model of Agonist Action.*** Overexpression of *GPR39* is in the present study employed as a tool trying to mimic a situation with continuous *GPR39* agonist treatment. An issue in this approach in general is whether you obtain appropriate receptor signaling and in the appropriate situation. With *GPR39* we do obtain a protection of the  $\beta$  cells when they are challenged as judged from the prevention of the increase in nonfasting blood glucose after STZ treatment (Figure 2). However, the transgenic overexpression of *GPR39* apparently in itself impairs glucose tolerance and affects  $\beta$ -cell mass—albeit not significantly (Figures 3 and 4). This situation, where a signal obtained through transgenic overexpression can function as both “friend and foe,” is not atypical and has, for example, been suggested for the G protein subunit  $\alpha_q$  ( $G\alpha_q$ ) where the effect of the signaling also is balancing between promoting cell survival and apoptosis [36, 37]. This could be relevant for the *GPR39* receptor which signals through  $G\alpha_q$  but probably also through G12/13 [2]. However, because *GPR39* displays high constitutive signalling, the increased transgenic expression of the receptor will in itself directly lead to increased signaling activity

independent of the presence of agonist. In other words, it is possible that a high level of receptor expression will lead to an inappropriate degree of signaling in the unchallenged situation, that is, when the  $\beta$  cells are not in a stress situation. Likewise, counter regulatory effects from constitutively Gs signaling in the  $\beta$  cells have been observed [28]. Post-transcriptional regulation renders the correlation of RNA to protein very complicated even when comparing the same RNA transcript under various conditions [38, 39]. Thus, predicting protein levels based on the two very different RNA transcripts endogenous *Gpr39* and the transgenic *GPR39* is inherently flawed. So although the expression level of the transgenic, human *GPR39* appears to be rather moderate, that is, only approximately 1.5-fold on top of the endogenous mouse *Gpr39* expression (data not shown), the protein level could be much higher. At least it appears that care should be taken in increasing *GPR39* signaling in the  $\beta$  cells in the unchallenged situation as this may impair glucose tolerance in itself. However, at the end of the day when pharmacological agonist tools for *GPR39* are available it may simply be a question of using the right dose and treating at the right time.

## Abbreviations

7TM:	Seven transmembrane
rtTA:	Reverse tetracycline-controlled transactivator
STZ:	Streptozotocin
WT:	Wild type
DOX:	Doxycycline
YWHAZ:	Tyrosine 3-monooxygenase/tryptophan 5-monooxygenase activation protein, zeta polypeptide
OGTT:	Oral glucose tolerance test.

## Disclosure Statement

The author have nothing to disclose.

## Acknowledgments

This work was carried out as a part of the research program of the UNIK: Food, Fitness & Pharma for Health and Disease (see <http://www.foodfitnesspharma.ku.dk/>) supported by the Danish Ministry of Science, Technology and Innovation and the Novo Nordisk Foundation Center for Basic Metabolic Research. The laboratories were further supported by grants from the Novo Nordisk Foundation (to B. H., T. W. S., and N. W.) the Lundbeck Foundation (to K. L. E., and T. W. S.) from the Danish Medical Research Council (to K. L. E., B. H., and T. W. S.) and the Swedish Medical Research Council (Projects no. 522-2008-4216, K2009-55X 21111-01-4 to N. W.), and the Magnus Bergvall and Albert Pahlsson foundations (to N. W.). The authors are grateful to Dr. Yuval Dor for being extremely helpful in supplying the RIP-rtTA transgenic mice and Mette Simons and Doris Persson for expert technical assistance.



## References

- [1] S. D. Feighner, C. P. Tan, K. K. McKee et al., "Receptor for motilin identified in the human gastrointestinal system," *Science*, vol. 284, no. 5423, pp. 2184–2188, 1999.
- [2] B. Holst, N. D. Holliday, A. Bach, C. E. Elling, H. M. Cox, and T. W. Schwartz, "Common structural basis for constitutive activity of the ghrelin receptor family," *Journal of Biological Chemistry*, vol. 279, no. 51, pp. 53806–53817, 2004.
- [3] B. Holst and T. W. Schwartz, "Constitutive ghrelin receptor activity as a signaling set-point in appetite regulation," *Trends in Pharmacological Sciences*, vol. 25, no. 3, pp. 113–117, 2004.
- [4] A. D. Howard, R. Wang, S. S. Pong et al., "Identification of receptors for neuromedin U and its role in feeding," *Nature*, vol. 406, no. 6791, pp. 70–74, 2000.
- [5] D. Zhao and C. Pothoulakis, "Effects of NT on gastrointestinal motility and secretion, and role in intestinal inflammation," *Peptides*, vol. 27, no. 10, pp. 2434–2444, 2006.
- [6] K. L. Egerod, B. Holst, P. S. Petersen et al., "GPR39 splice variants versus antisense gene LYPD1: expression and regulation in gastrointestinal tract, endocrine pancreas, liver, and white adipose tissue," *Molecular Endocrinology*, vol. 21, no. 7, pp. 1685–1698, 2007.
- [7] D. Moechars, I. Depoortere, B. Moreaux et al., "Altered gastrointestinal and metabolic function in the GPR39-obestatin receptor-knockout mouse," *Gastroenterology*, vol. 131, no. 4, pp. 1131–1141, 2006.
- [8] P. P. G. Gerber, E. R. Trimble, and C. B. Wollheim, "Glucose and cyclic AMP as stimulators of somatostatin and insulin secretion from the isolated, perfused rat pancreas. A quantitative study," *Diabetes*, vol. 30, no. 1, pp. 40–44, 1981.
- [9] H. Ishihara, P. Maeckler, A. Gjinovci, P.-L. Herrera, and C. B. Wollheim, "Islet  $\beta$ -cell secretion determines glucagon release from neighbouring  $\alpha$ -cells," *Nature Cell Biology*, vol. 5, no. 4, pp. 330–335, 2003.
- [10] J. V. Zhang, P. G. Ren, O. Avsian-Kretchmer et al., "Medicine: obestatin, a peptide encoded by the ghrelin gene, opposes ghrelin's effects on food intake," *Science*, vol. 310, no. 5750, pp. 996–999, 2005.
- [11] M. Chartrel, R. Alvear-Perez, J. Leprince et al., "Comment on 'Obestatin, a peptide encoded by the ghrelin gene, opposes ghrelin's effects on food intake'," *Science*, vol. 315, no. 5813, p. 766, 2007.
- [12] B. Holst, K. L. Egerod, E. Schild et al., "GPR39 signaling is stimulated by zinc ions but not by obestatin," *Endocrinology*, vol. 148, no. 1, pp. 13–20, 2007.
- [13] E. Lauwers, B. Landuyt, L. Arckens, L. Schoofs, and W. Luyten, "Obestatin does not activate orphan G protein-coupled receptor GPR39," *Biochemical and Biophysical Research Communications*, vol. 351, no. 1, pp. 21–25, 2006.
- [14] F. Tremblay, M. Perreault, L. D. Klamman, J. F. Tobin, E. Smith, and R. E. Gimeno, "Normal food intake and body weight in mice lacking the G protein-coupled receptor GPR39," *Endocrinology*, vol. 148, no. 2, pp. 501–506, 2007.
- [15] J. V. Zhang, C. Klein, P. G. Ren et al., "Response to comment on 'Obestatin, a peptide encoded by the ghrelin gene, opposes ghrelin's effects on food intake'," *Science*, vol. 315, no. 5813, p. 766, 2007.
- [16] B. Holst, K. L. Egerod, C. Jin et al., "G protein-coupled receptor 39 deficiency is associated with pancreatic islet dysfunction," *Endocrinology*, vol. 150, no. 6, pp. 2577–2585, 2009.
- [17] F. Tremblay, A. M. T. Richard, S. Will et al., "Disruption of G protein-coupled receptor 39 impairs insulin secretion in vivo," *Endocrinology*, vol. 150, no. 6, pp. 2586–2595, 2009.
- [18] S. Dittmer, M. Sahin, A. Pantlen et al., "The constitutively active orphan G-protein-coupled receptor GPR39 protects from cell death by increasing secretion of pigment epithelium-derived growth factor," *Journal of Biological Chemistry*, vol. 283, no. 11, pp. 7074–7081, 2008.
- [19] A. Kistner, M. Gossen, F. Zimmermann et al., "Doxycycline-mediated quantitative and tissue-specific control of gene expression in transgenic mice," *Proceedings of the National Academy of Sciences of the United States of America*, vol. 93, no. 20, pp. 10933–10938, 1996.
- [20] Z. Zhu, T. Zheng, C. G. Lee, R. J. Homer, and J. A. Elias, "Tetracycline-controlled transcriptional regulation systems: advances and application in transgenic animal modeling," *Seminars in Cell and Developmental Biology*, vol. 13, no. 2, pp. 121–128, 2002.
- [21] A. A. Like and A. A. Rossini, "Streptozotocin induced pancreatic insulinitis: new model of diabetes mellitus," *Science*, vol. 193, no. 4251, pp. 415–417, 1976.
- [22] N. Wierup, M. Kuhar, B. O. Nilsson, H. Mulder, E. Ekblad, and F. Sundler, "Cocaine- and amphetamine-regulated transcript (CART) is expressed in several islet cell types during rat development," *Journal of Histochemistry and Cytochemistry*, vol. 52, no. 2, pp. 169–177, 2004.
- [23] L. Härndahl, N. Wierup, S. Enerbäck et al., " $\beta$ -cell-targeted overexpression of phosphodiesterase 3B in mice causes impaired insulin secretion, glucose intolerance, and deranged islet morphology," *Journal of Biological Chemistry*, vol. 279, no. 15, pp. 15214–15222, 2004.
- [24] M. K. Thomas, O. N. Devon, J. H. Lee et al., "Development of diabetes mellitus in aging transgenic mice following suppression of pancreatic homeoprotein IDX-1," *Journal of Clinical Investigation*, vol. 108, no. 2, pp. 319–329, 2001.
- [25] J. Johansen, C. Rosenblad, K. Andsberg et al., "Evaluation of Tet-on system to avoid transgene down-regulation in ex vivo gene transfer to the CNS," *Gene Therapy*, vol. 9, no. 19, pp. 1291–1301, 2002.
- [26] H. Mulder, B. Åhrén, and F. Sundler, "Differential expression of islet amyloid polypeptide (amylin) and insulin in experimental diabetes in rodents," *Molecular and Cellular Endocrinology*, vol. 114, no. 1–2, pp. 101–109, 1995.
- [27] E. H. Leiter, "Multiple low-dose streptozotocin-induced hyperglycemia and insulinitis in C57BL mice: influence of inbred background, sex, and thymus," *Proceedings of the National Academy of Sciences of the United States of America*, vol. 79, no. 2, pp. 630–634, 1982.
- [28] J. M. Guettier, D. Gautam, M. Scarselli et al., "A chemical-genetic approach to study G protein regulation of  $\beta$  cell function in vivo," *Proceedings of the National Academy of Sciences of the United States of America*, vol. 106, no. 45, pp. 19197–19202, 2009.
- [29] K. K. McKee, C. P. Tan, O. C. Palyha et al., "Cloning and characterization of two human G protein-coupled receptor genes (GPR38 and GPR39) related to the growth hormone secretagogue and neurotensin receptors," *Genomics*, vol. 46, no. 3, pp. 426–434, 1997.
- [30] B. A. Jones and G. J. Gores, "Physiology and pathophysiology of apoptosis in epithelial cells of the liver, pancreas, and intestine," *American Journal of Physiology*, vol. 273, no. 6, pp. G1174–G1188, 1997.

- [31] P. Schott-Ohly, A. Lgssiar, H. J. Partke, M. Hassan, N. Friesen, and H. Gleichmann, "Prevention of spontaneous and experimentally induced diabetes in mice with zinc sulfate-enriched drinking water is associated with activation and reduction of NF- $\kappa$ B and AP-1 in islets, respectively," *Experimental Biology and Medicine*, vol. 229, no. 11, pp. 1177–1185, 2004.
- [32] P. Ohly, C. Dohle, J. Abel, J. Seissler, and H. Gleichmann, "Zinc sulphate induces metallothionein in pancreatic islets of mice and protects against diabetes induced by multiple low doses of streptozotocin," *Diabetologia*, vol. 43, no. 8, pp. 1020–1030, 2000.
- [33] M. H. Tobia, M. M. Zdanowicz, M. A. Wingertzahn, B. McHefey-Atkinson, A. E. Slonim, and R. A. Wapnir, "The role of dietary zinc in modifying the onset and severity of spontaneous diabetes in the BB Wistar rat," *Molecular Genetics and Metabolism*, vol. 63, no. 3, pp. 205–213, 1998.
- [34] H. Kaneto, T. A. Matsuoka, N. Katakami et al., "Oxidative stress and the JNK pathway are involved in the development of type 1 and type 2 diabetes," *Current Molecular Medicine*, vol. 7, no. 7, pp. 674–686, 2007.
- [35] J. L. Evans, I. D. Goldfine, B. A. Maddux, and G. M. Grodsky, "Are oxidative stress—activated signaling pathways mediators of insulin resistance and  $\beta$ -cell dysfunction?" *Diabetes*, vol. 52, no. 1, pp. 1–8, 2003.
- [36] J. W. Adams and J. H. Brown, "G-proteins in growth and apoptosis: lessons from the heart," *Oncogene*, vol. 20, no. 13, pp. 1626–1634, 2001.
- [37] K. B. Hubbard and J. R. Hepler, "Cell signalling diversity of the Gq $\alpha$  family of heterotrimeric G proteins," *Cellular Signalling*, vol. 18, no. 2, pp. 135–150, 2006.
- [38] J. Mata, S. Marguerat, and J. Bähler, "Post-transcriptional control of gene expression: a genome-wide perspective," *Trends in Biochemical Sciences*, vol. 30, no. 9, pp. 506–514, 2005.
- [39] M. Gry, R. Rimini, S. Strömberg et al., "Correlations between RNA and protein expression profiles in 23 human cell lines," *BMC Genomics*, vol. 10, article 365, 2009.