

Errata sheet

Published on August 15, 2024.

Author: Praveenkumar Hiremath

This errata sheet contains errors and corresponding corrections for the Doctoral Thesis titled "Grain boundary embrittlement due to phosphorus in tungsten: An atomistic approach, Doctoral Thesis (Compilation), Lund University, Sweden, 2024 August 15".

Corrections to the errors in the Doctoral Thesis

Correction 1:

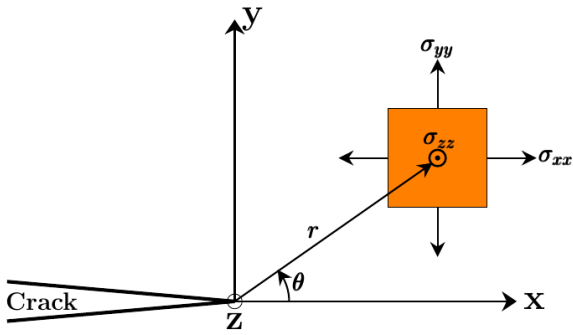


Figure 1: Figure 1 as on page 5 (Section 2.1).

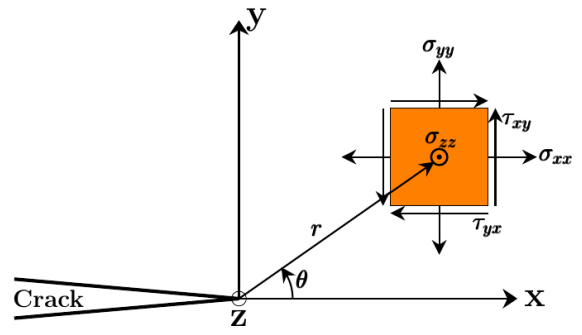


Figure 2: Figure 1 that should be on page 5 (Section 2.1).

Correction 2:

Under Section 2.1, on page 5, the equation (3) reads

$$\sigma_{zz} = \frac{K_I}{\sqrt{2\pi r}} \Re \left\{ \left[\frac{\mu_1 \mu_2}{(\mu_1 - \mu_2)} \right] \left[\frac{1}{(\cos \theta + \mu_1 \sin \theta)^{1/2}} - \frac{1}{(\cos \theta + \mu_2 \sin \theta)^{1/2}} \right] \right\}, \quad (3)$$

Equation (3) should read

$$\tau_{xy} = \frac{K_I}{\sqrt{2\pi r}} \Re \left\{ \left[\frac{\mu_1 \mu_2}{(\mu_1 - \mu_2)} \right] \left[\frac{1}{(\cos \theta + \mu_1 \sin \theta)^{1/2}} - \frac{1}{(\cos \theta + \mu_2 \sin \theta)^{1/2}} \right] \right\}, \quad (3)$$

Correction 3:

On page 5, the first line below Figure 1 reads - "where \Re represents the real part operator". This should read - " σ_{zz} is a linear combination of σ_{xx} and σ_{yy} under plane strain conditions. \Re represents the real part operator."