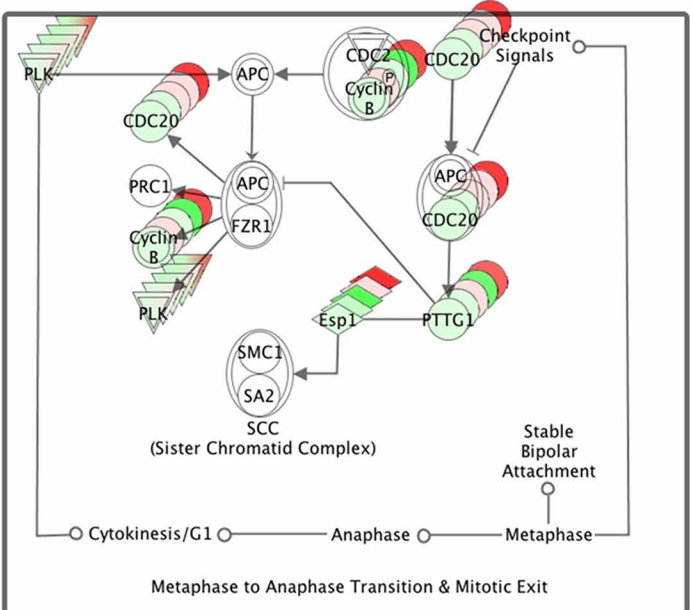
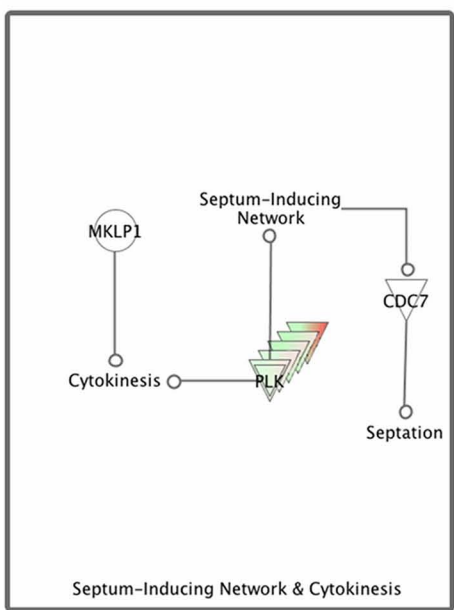
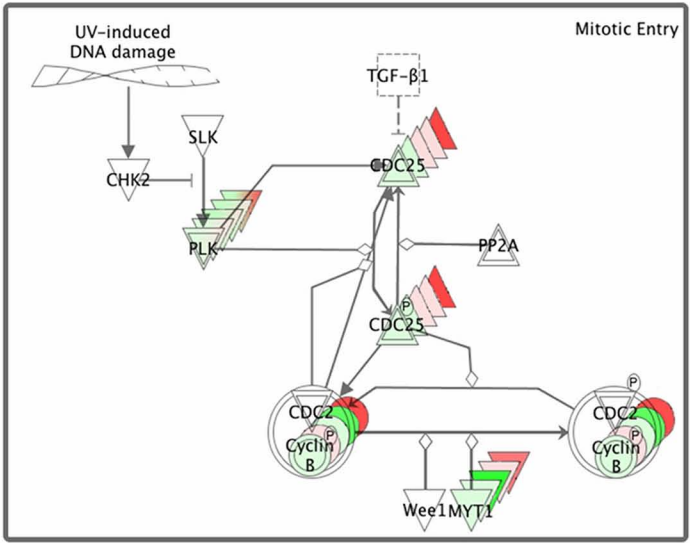
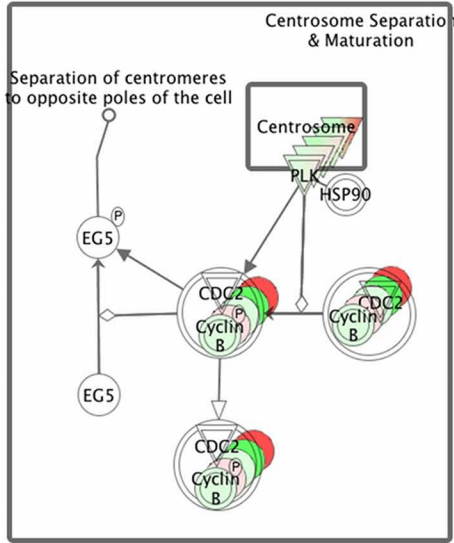


a. Mitotic roles of Polo-like kinase



Legend

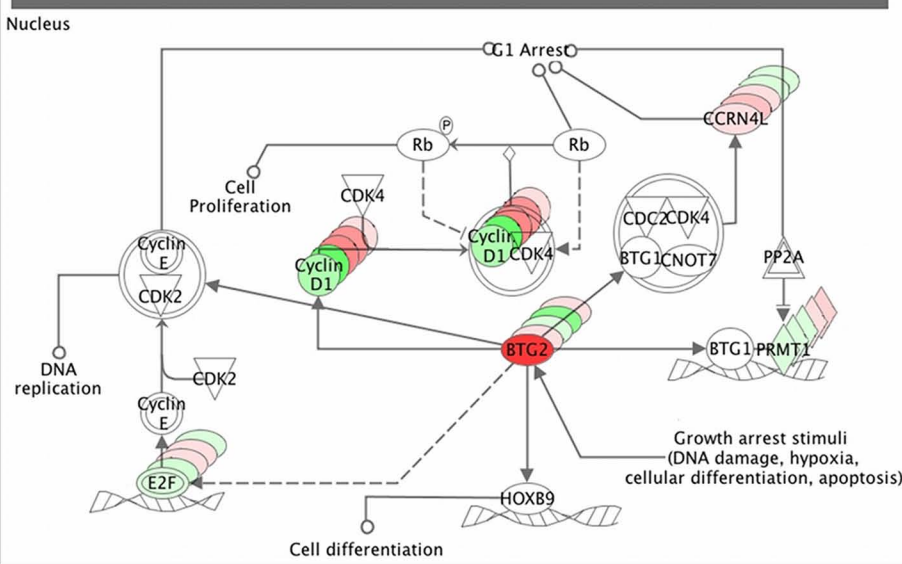
Up (red bar)

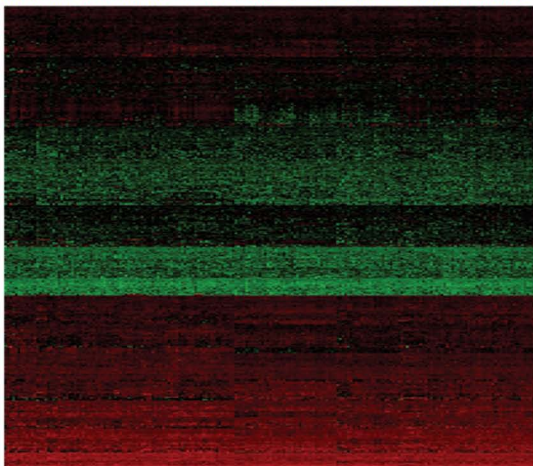
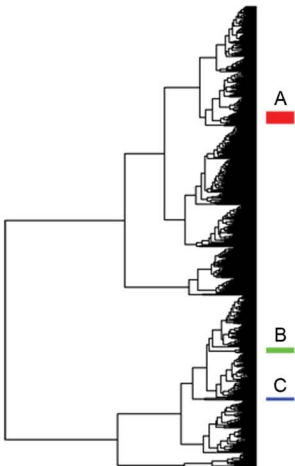
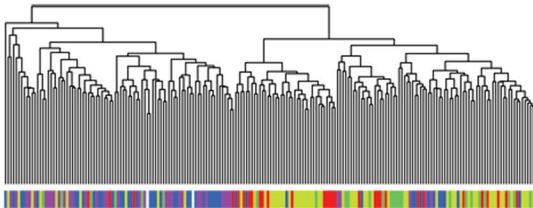
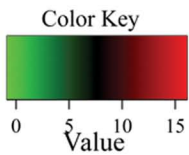
Down (green bar)

BTG1: 24h (green), 12h (red), 6h (red), 3h (red), 1h (red)

- Other
- △ Phosphatase
- ◊ Transcriptional regulator
- ⊖ Group/Complex
- ◇ Enzyme
- ▽ Kinase
- Growth factor

b. Cell cycle regulation by BTG family proteins





Supplemental Figure legends

Supplemental Figure 1. Pathways associated with the most significantly altered FGF-8b-regulated genes. a) Mitotic roles of Polo-like kinase. b) Cell cycle regulation by BTG family proteins. Gene expression is shown at 1, 3, 6, 12 and 24 hours of FGF-8b treatment. Up regulated genes are depicted in red and down regulated genes are depicted in green.

Supplemental Figure 2. Hierarchical clustering of human orthologs of FGF-8 regulated genes and human breast cancer samples. Clustering of 592 human probe sets (vertical) with 198 human breast cancer samples (horizontal) revealed three gene sets (A-C) which showed differential expression between two main patient clusters. The NPI category of each tumor sample is indicated on the right.

Supplemental Table 1. Mouse and human primer sequences used for quantitative PCR analysis.

<i>Gene</i>	<i>Forward primer (5'→3')</i>	<i>Reverse primer (5'→3')</i>
Mouse		
Cyclin D1	CCTCCGTATCTTACTTCAAGT	AATGAACTTCACATCTGTGGC
Btg2	ACTGACCGATCATTACAAACAC	CTCATA CAGGACACAGATGG
Dusp4	GAAATCCTCCCTTTCCTCTACC	CTTTACTGCGTCGATGTACTC
Cyclin B1	GTGAATGGACACCAACTCTG	CAGATGTAGCAGTCTATTGGAG
Aurora kinase A	AACAGCTACTTACATCACTGAG	GTCTGCAATCTTCAACTCTCC
Plk1	GTATTCCAAGCACATCAACC	GTGAGGCAGGTAATAGGGAG
β-actin	GGGCCGCCCTAGGCACCA	TTGGCCTTAGGGTTCAGGGGG
Human		
Cyclin D1	CCTCTAAGATGAAGGAGACCA	AAATGAACTTCACATCTGTGGC
BTG2	TAAGGTCTTCAGCGGGGCGCT	AGCAGCACTTGGTTCTTGCAGGTGA
DUSP4	CTGGTTCATGGAAGCCATAGAGT	CGCCACGGCAGTCC
Cyclin B1	ATAAGGCGAAGATCAACATGGC	TTTGTTACCAATGTCCCCAAGAG
Aurora kinase A	CTGCATTT CAGGACCTGTTAAGG	AACGCGCTGGGAAGAATTT
PLK1	GTATTCCAAGCACATCAACC	TAGCCAGAAGTAAAGA ACTCGT
β-actin	GGGCCGCCCTAGGCACCA	TTGGCCTTAGGGTTCAGGGGG

Supplemental Table S2. Up- and downregulated genes***Upregulated genes after 1h*****Gene symbol**

Pcdh20

Fos

Gm1966

Egr1

Downregulated genes after 1h**Gene Symbol**

Nos2

Nos2

Rnpep

Gm1960

Icam1

Upregulated genes after 3h**Gene symbol**

Areg

Errfi1

Phlda1

Zfp3612

Ier3

Plk3

Ptgs2

Dusp4

Lif

Epha2

Sgk

Hbegf

Fosl1

Cyr61

Myc

Efnb2

Maff

Tgif

Ccrn4l

Tgif

Trib2

BC063749

Klf6

Tead4

Plaur

Gprc5a

Ier2
Frmd6
Ier5
Btg1
Fgf7
Abtb2
Arl4c
Kcnn4
Ccl2
Bhlhb2
Tcrb-V13
Hk2
Ankrd1
Slc25a37
Il17ra
Ccl7
Id3
Shb
Irf2bp2
Vps37b
Dusp16
Rap2b
Ifrd1
Jmjd3
Rbpsuh
Apcdd1
Lrig1
Mafk
Chst2
Pim3
Junb
Mcl1
Slc39a14
Myo10
Cd300lb
Sipi
Emp1
Mobkl2a
Bat2d
Slc20a1
Ahnak
Wsb1
Chrac1
Bat2d
Twist1

Sh3pxd2b
Ahnak
Nedd9
Bat2d
Serpine1

Downregulated genes after 3h

Gene symbol

Rgma
Rnpep
Cdc42ep2
Gadd45b
Cbx8
Hist1h1a
Saa3
Smad6
Plekhf1
Adrb2
Rassf7
Plekhg5
Klhdc7a
Zbtb7c
Saa2
Pgpep1
Rpusd3
Sertad3
Hist1h2af
Zfp219
Klhl25

Upregulated genes after 6h

Gene symbol

Emp1
Dusp4
Glx
Ccnd1
Ptgs2
Epha2
Phlda1
Gprc5a
Ier3
Apcdd1
Parvb
Ccl20
Plaur

Lif
Plk3
Tcrb-V13
Sgk
Ankrd1
Apcdd1
Amotl1
Timm8a1
Pim3
Twist1
Zfp36l2
Phc2
Rbpsuh
Slc20a1
Syde1
Cxcl1
Slc39a14
Sat1
Tnnt2
Tead4
Rin1
Irg1
Rrm2
Pdlim2
Ext1
Rap1b
Ddit4l

Downregulated genes after 6h

Gene symbol

Epn3
Al646023
Bcl9l
Foxq1
Acpl2
Mgp
Mknk2
Bhlhb3
Abcc3
Ddit4
Saa2
Mgat3
Plxnd1
Ddr1

Arrb1
Fzd2
Cdc42ep2
St5
Mcpt8
Efnb1
Tmem158
Camk1d
C1qtnf1
Trib3
Mxd4
Sox9
Limk2
Atf3
Stat5a
St3gal3
Olfir32
Ndr1
Cacnb3
Arhgef10l

Upregulated genes after 12h

Gene symbol

Dusp4
Tnfaip2
Spry1
Phlda1
Ccnd1
Apcdd1
Gprc5a
Apcdd1
Ier3
Arhgap22
Areg
Emp1
Myc
Ptgs2
Hmga1
Parvb
Epha2
Eps8
Eps8
Dusp9
Kcnn4
Sdc4

Map3k6
Fgfr1
Unc5b
Zfp36l2
Plaur
Chst2
Errfi1
Slc25a37
Spp1
Slc7a11
Phc2
Cdc6
Slc7a11
lfrd1
BC063749
Mtm1
Fah
Slc39a14
Csf1
Cxcl1
Tnfrsf12a
Dctd
Rapgef3
Nrp1
Lrp8
Klf5
Pim3
Nav3
Id1
Tinagl
Wnt7b
E2f8
Mcm10
Hivep3
Ldlrap1
Ngfb
Lrp8
Itga3
Rbms1
Sgk
Shmt1
Stc2
Prkar2b
Itga6
Tead4

Plk2
Shb
Cyr61
Zfpm1
Tcrb-V13
Hist1h2bp
Rbpsuh
Il4ra
Efnb2

Downregulated genes after 12h

Gene symbol

Nfatc4
Sesn3
Jmjd2b
Al662250
Rab3a
Ndr1
Gpd1l
Aldh4a1
Plekhg5
D9Ert280e
Atp2b4
C3
Scx
Sord
Cdon
Tle6
Dcamk1l
Sox9
Fgfr2
Wdr6
Gprc5b
Rnpep
Acot1
Ptch1
Ndr1
Hbp1
Cpt1a
Acox2
Ddr1
Arrb1
Gas7
Ypel3
Bhlhb3

Ephb6
Nuak1
Hbp1
Klhdc8a
Slc2a6
Vdr
Fosl2
Saa2
AU041783
Rhub
Mapre3
Trp53inp2
Nos2
Tmem53
Ephb6
Arhgef19
Gpr56
Dbp
Ddit4
Abcc3
Nos2
Ypel3
Tmie
Gm967
Aldh11l1
BC025575
Rcvrn
Sox4
Adra1b
Cyp26b1
Klc4
Acpl2
Prep
Cdc42ep2
Arvcf
Ehd3
Limk2
Selenbp1
Selenbp2
Saa3
AI646023
Foxq1
Ggt6
Steap4
Steap4

C1qtnf1
Mxd4

Upregulated genes after 24h

Gene symbol

Mrpplf4
Plf
Emp1
Slco4a1
Sgol1
Arhgap11a
Id1
Fosl1
Arhgap19
Areg
Dusp6
Birc5
Pou2af1
Sema6b
Gsta1
Mmp9
Ccna2
Ncapg
Bard1
Kif14
Esp1
D2Ert750e
Nek2
Cenpa
Hmnr
Ckap2l
Anln
D17H6S56E-5
Cenpm
Aurka
Cdca3
Nusap1
Rrm2
Gins1
Fancd2
Recql4
Troap
Mybl2
BC030867
Ccnb1

Hist1h2bp
Eme1
Tacc3
Hirip3
Plk4
Ccnb2
Cdc25b
Kif22
Cdc25c
Slc7a11
Traip
Plk1
Kifc1
Cenpm
Exo1
Kif23
Chtf18
Spry1
Cks2
Fbxo5
Cdca2
Lipg
Dusp4
Kif2c
Mtm1
Spag5
Hist1h3g
BC048355
Pttg1
Cdca8
Rad54l
E2f8
Ncapd2
Spn
Brip1
9530076L18
Pole
Hist1h1d
Trim24
Arntl2
Aurkb
Slc11a1
Hist1h2bk
Hist1h2ao
Cdc6

Mad2l1
Incenp
Slc14a1
Cxcl10
BC048355
Rfc5
Ckap2
Uhrf1
Rfc4
Top2a
Ncapd2
Hist1h2bp
Aldh3a1
Cenph
Hist1h2af
Fign1
Iqgap3
Rad51
Pmf1
Spp1
Pkmyt1
Stmn1
Chaf1a
Bub1b
Cit
Igsf1
Cdca5
Tubb6
Tomm40
Tas2r117
Iqgap3
Hist1h2ac
Hist1h2be
Hist1h3f
Wnt11
Ncaph
Kif20a
V1rh16
Prr11
Ddx39
Cdc45l
Topbp1
Hmga1
Pole2
BC055324

Ptgs2
Spbc24
Rtel1
A1447904
Hist1h4f
Wdr51a
Hist1h2bm
Gmn
Tmem48
Cdt1
Orc1l
Stmn1
Ccnd1
Dek
Psmc3ip
Fxyd5
Mcm7
Itgb7
Tcf19
Cbln4
Rad51ap1
Tuba6
Dopey2
D14Erd500e
Rfc3
Stxbp5l
Gpsm2
Hist2h4
Timm8a1
Olfr1359
Wdr51a
Wdr62
Timm8a1
Hist1h4b
Hist1h2bl
Smtn
Spred1
Hcrr1
Nup85
Dlg7
Hmga1
Nrm
Tinf2
Timm8a2
Slc7a11

Htra3
Pkn3
Tyms
Hist1h2an
Pask
Cks1b
Ifrd2
Ube2t
Htra3
Exph5
Prim1
Foxm1
Tpx2
Mcm5
LOC544710
Asf1b
Krtap4-7
Sec1
Ranbp1
Inhba
Cep192
Hells
Tfrc
Wtap
Dab2
Cklf
Suv39h1
Ifrd1
Unc5b
Kif4
H2afx
Vrk1
Nfkbil2
LOC433426

Downregulated genes after 24h

Gene symbol

Gdpd2
Aox3
Tcp11l2
Rps14
Zwilch
Ifitm1
Clu
Gm462

Spon1
Fmo1
Prelp
Saa2
Dcamk1
Crybb1
Mxd4
Tcn2
Mro
Styk1
Cdsn
Cfb
Pdzk1ip1
Pfkfb3
Sectm1b
Col15a1
Aebp1
C1qtnf1
Mxd4
Hcfc1r1
Chi3l1
Arvcf
Cml3
Ctgf
Tspan32
Ephb6
Abi3bp
Synpo
Kcnj16
Hs3st1
Cybb
Saa1
Fgfbp1
Car3
Tmem150
Zfhx1b
Ptch1
Limk2
Loh11cr2a
Scara5
Itga10
Hp
Gstm7
Ephb6
Atp2b4

Steap4
Fgfr2
Cdc42ep2
Hod
Col6a2
Phyh
Pdk2
Ndr1
Acaa1a
Gpc6
Dmpk
Col6a1
C8g
Cmb1
Cryab
Clec2d
Hrh2
Lbp
C8g
Sparc
Ptch1
Mfsd7
Il18
Atp8b3
Smpd3b
Usp2
Cml1
Ndr1
Krt80
Neu1
Enpp5
Oit3
S3-12
Adssl1
Adra1b
Lamb3
Slc2a6
Calcoco1
Endod1
Gpr37l1
Ypel2
Aox1
Pdcc4
Fcgr3a
Il18bp

Lgmn
Icam5
Dpp7
Endod1
Tln2
Agt
Apol6
Ccl8
Btd14a
Naga
Mgst3
Klc4
Mpeg1
Slamf8
Matn2
Sox4
Krt80
Tln2
Endod1
Acox2
Gpr177
Atp2b4
Fbln2
Dtna
Thbs1
Comt
Fcgrt
C3
D5Ert40e
Tln2
C1r
RP23-136K12.4
Atp1a2
Sp100
Crip1
Arhgef10
Gm967
Lpin1
Col3a1
Dtx4
BC031353
Crim1
Csad
Klk1
Crip1

Rras
Snn
Gstm1
Gm967
Cnn2
Phf1
Orm1
Tspyl2
Klk1
Icam4
Pltp
Klc4
Crim1
Mxra8
Ror1
Klk1b26
Sort1
Shroom3
Marcks
Phactr1
Hdac11
Enpp2
Tspan32
Parp3
Sdsl
Itga10

own regulated genes after 1, 3, 6, 12, and 24h of FGF-8b stimulation. FDR<0.01

Name

Protocadherin 20
 FBJ osteosarcoma oncogene
 Gene model 1966, (NCBI)
 Early growth response 1

Name

Nitric oxide synthase 2, inducible, macrophage
 Nitric oxide synthase 2, inducible, macrophage
 Arginyl aminopeptidase (aminopeptidase B)
 Gene model 1960, (NCBI)
 Intercellular adhesion molecule

Name

Amphiregulin
 ERBB receptor feedback inhibitor 1
 Pleckstrin homology-like domain, family A, member 1
 Zinc finger protein 36, C3H type-like 2
 Immediate early response 3
 Polo-like kinase 3 (Drosophila)
 Prostaglandin-endoperoxide synthase 2
 Dual specificity phosphatase 4
 Leukemia inhibitory factor
 Eph receptor A2
 Serum/glucocorticoid regulated kinase
 Heparin-binding EGF-like growth factor
 Fos-like antigen 1
 Cysteine rich protein 61
 Myelocytomatosis oncogene
 Ephrin B2
 V-maf musculoaponeurotic fibrosarcoma oncogene family, protein F
 TG interacting factor
 CCR4 carbon catabolite repression 4-like (S. cerevisiae)
 TG interacting factor
 Tribbles homolog 2 (Drosophila)
 CDNA sequence BC063749
 Kruppel-like factor 6
 TEA domain family member 4
 Plasminogen activator, urokinase receptor
 G protein-coupled receptor, family C, group 5, member A

Immediate early response 2
FERM domain containing 6
Immediate early response 5
B-cell translocation gene 1, anti-proliferative
Fibroblast growth factor 7
Ankyrin repeat and BTB (POZ) domain containing 2
ADP-ribosylation factor-like 4C
Potassium intermediate/small conductance calcium-activated channel, subfamily N, member 4
Chemokine (C-C motif) ligand 2
Basic helix-loop-helix domain containing, class B2
T-cell receptor beta, variable 13
Hexokinase 2
Ankyrin repeat domain 1 (cardiac muscle)
Solute carrier family 25, member 37
Interleukin 17 receptor A
Chemokine (C-C motif) ligand 7
Inhibitor of DNA binding 3
Src homology 2 domain-containing transforming protein B
Interferon regulatory factor 2 binding protein 2
Vacuolar protein sorting 37B (yeast)
Dual specificity phosphatase 16
RAP2B, member of RAS oncogene family
Interferon-related developmental regulator 1
Jumonji domain containing 3
Recombining binding protein suppressor of hairless (Drosophila)
Adenomatous polyposis coli down-regulated 1
Leucine-rich repeats and immunoglobulin-like domains 1
V-maf musculoaponeurotic fibrosarcoma oncogene family, protein K (avian)
Carbohydrate sulfotransferase 2
Proviral integration site 3
Jun-B oncogene
Myeloid cell leukemia sequence 1
Solute carrier family 39 (zinc transporter), member 14
Myosin X
CD300 antigen like family member B
Secretory leukocyte peptidase inhibitor
Epithelial membrane protein 1
MOB1, Mps One Binder kinase activator-like 2A (yeast)
BAT2 domain containing 1
Solute carrier family 20, member 1
AHNAK nucleoprotein (desmoyokin)
WD repeat and SOCS box-containing 1
Chromatin accessibility complex 1
BAT2 domain containing 1
Twist gene homolog 1 (Drosophila)

SH3 and PX domains 2B
 AHNAK nucleoprotein (desmoyokin)
 Neural precursor cell expressed, developmentally down-regulated gene 9
 BAT2 domain containing 1
 Serine (or cysteine) peptidase inhibitor, clade E, member 1

Name

RGM domain family, member A
 Arginyl aminopeptidase (aminopeptidase B)
 CDC42 effector protein (Rho GTPase binding) 2
 Growth arrest and DNA-damage-inducible 45 beta
 Chromobox homolog 8 (Drosophila Pc class)
 Histone cluster 1, H1a
 Serum amyloid A 3
 MAD homolog 6 (Drosophila)
 Pleckstrin homology domain containing, family F (with FYVE domain) member 1
 Adrenergic receptor, beta 2
 Ras association (RalGDS/AF-6) domain family 7
 Pleckstrin homology domain containing, family G (with RhoGef domain) member 5
 Kelch domain containing 7A
 Zinc finger and BTB domain containing 7C
 Serum amyloid A 2
 Pyroglutamyl-peptidase I
 RNA pseudouridylate synthase domain containing 3
 SERTA domain containing 3
 Histone cluster 1, H2af
 Zinc finger protein 219
 Kelch-like 25 (Drosophila)

Name

Epithelial membrane protein 1
 Dual specificity phosphatase 4
 Glutaredoxin
 Cyclin D1
 Prostaglandin-endoperoxide synthase 2
 Eph receptor A2
 Pleckstrin homology-like domain, family A, member 1
 G protein-coupled receptor, family C, group 5, member A
 Immediate early response 3
 Adenomatous polyposis coli down-regulated 1
 Parvin, beta
 Chemokine (C-C motif) ligand 20
 Plasminogen activator, urokinase receptor

Leukemia inhibitory factor
 Polo-like kinase 3 (Drosophila)
 T-cell receptor beta, variable 13
 Serum/glucocorticoid regulated kinase
 Ankyrin repeat domain 1 (cardiac muscle)
 Adenomatosis polyposis coli down-regulated 1
 Angiomotin-like 1
 Translocase of inner mitochondrial membrane 8 homolog a1 (yeast)
 Proviral integration site 3
 Twist gene homolog 1 (Drosophila)
 Zinc finger protein 36, C3H type-like 2
 Polyhomeotic-like 2 (Drosophila)
 Recombining binding protein suppressor of hairless (Drosophila)
 Solute carrier family 20, member 1
 Synapse defective 1, Rho GTPase, homolog 1 (C. elegans)
 Chemokine (C-X-C motif) ligand 1
 Solute carrier family 39 (zinc transporter), member 14
 Spermidine/spermine N1-acetyl transferase 1
 Troponin T2, cardiac
 TEA domain family member 4
 Ras and Rab interactor 1
 Immunoresponsive gene 1
 Ribonucleotide reductase M2
 PDZ and LIM domain 2
 Exostoses (multiple) 1
 RAS related protein 1b
 DNA-damage-inducible transcript 4-like

Name

Epsin 3
 Expressed sequence AI646023
 B-cell CLL/lymphoma 9-like
 Forkhead box Q1
 Acid phosphatase-like 2
 Matrix Gla protein
 MAP kinase-interacting serine/threonine kinase 2
 Basic helix-loop-helix domain containing, class B3
 ATP-binding cassette, sub-family C (CFTR/MRP), member 3
 DNA-damage-inducible transcript 4
 Serum amyloid A 2
 Mannoside acetylglucosaminyltransferase 3
 Plexin D1
 Discoidin domain receptor family, member 1

Arrestin, beta 1
 Frizzled homolog 2 (Drosophila)
 CDC42 effector protein (Rho GTPase binding) 2
 Suppression of tumorigenicity 5
 Mast cell protease 8
 Ephrin B1
 Transmembrane protein 158
 Calcium/calmodulin-dependent protein kinase ID
 C1q and tumor necrosis factor related protein 1
 Tribbles homolog 3 (Drosophila)
 Max dimerization protein 4
 SRY-box containing gene 9
 LIM motif-containing protein kinase 2
 Activating transcription factor 3
 Signal transducer and activator of transcription 5A
 ST3 beta-galactoside alpha-2,3-sialyltransferase 3
 Olfactory receptor 32
 N-myc downstream regulated gene 1
 Calcium channel, voltage-dependent, beta 3 subunit
 Rho guanine nucleotide exchange factor (GEF) 10-like

Name

Dual specificity phosphatase 4
 Tumor necrosis factor, alpha-induced protein 2
 Sprouty homolog 1 (Drosophila)
 Pleckstrin homology-like domain, family A, member 1
 Cyclin D1
 Adenomatosis polyposis coli down-regulated 1
 G protein-coupled receptor, family C, group 5, member A
 Adenomatosis polyposis coli down-regulated 1
 Immediate early response 3
 Rho GTPase activating protein 22
 Amphiregulin
 Epithelial membrane protein 1
 Myelocytomatosis oncogene
 Prostaglandin-endoperoxide synthase 2
 High mobility group AT-hook 1
 Parvin, beta
 Eph receptor A2
 Epidermal growth factor receptor pathway substrate 8
 Epidermal growth factor receptor pathway substrate 8
 Dual specificity phosphatase 9
 Potassium intermediate/small conductance calcium-activated channel, subfamily N, member 4
 Syndecan 4

Mitogen-activated protein kinase kinase kinase 6
Fibroblast growth factor receptor 1
Unc-5 homolog B (*C. elegans*)
Zinc finger protein 36, C3H type-like 2
Plasminogen activator, urokinase receptor
Carbohydrate sulfotransferase 2
ERBB receptor feedback inhibitor 1
Solute carrier family 25, member 37
Secreted phosphoprotein 1
Solute carrier family 7 (cationic amino acid transporter, y+ system), member 11
Polyhomeotic-like 2 (*Drosophila*)
Cell division cycle 6 homolog (*S. cerevisiae*)
Solute carrier family 7 (cationic amino acid transporter, y+ system), member 11
Interferon-related developmental regulator 1
CDNA sequence BC063749
X-linked myotubular myopathy gene 1
Fumarylacetoacetate hydrolase
Solute carrier family 39 (zinc transporter), member 14
Colony stimulating factor 1 (macrophage)
Chemokine (C-X-C motif) ligand 1
Tumor necrosis factor receptor superfamily, member 12a
DCMP deaminase
Rap guanine nucleotide exchange factor (GEF) 3
Neuropilin 1
Low density lipoprotein receptor-related protein 8, apolipoprotein e receptor
Kruppel-like factor 5
Proviral integration site 3
Neuron navigator 3
Inhibitor of DNA binding 1
Tubulointerstitial nephritis antigen-like
Wingless-related MMTV integration site 7B
E2F transcription factor 8
Minichromosome maintenance deficient 10 (*S. cerevisiae*)
Human immunodeficiency virus type I enhancer binding protein 3
Low density lipoprotein receptor adaptor protein 1
Nerve growth factor, beta
Low density lipoprotein receptor-related protein 8, apolipoprotein e receptor
Integrin alpha 3
RNA binding motif, single stranded interacting protein 1
Serum/glucocorticoid regulated kinase
Serine hydroxymethyl transferase 1 (soluble)
Stanniocalcin 2
Protein kinase, cAMP dependent regulatory, type II beta
Integrin alpha 6
TEA domain family member 4

Polo-like kinase 2 (Drosophila)
 Src homology 2 domain-containing transforming protein B
 Cysteine rich protein 61
 Zinc finger protein, multitype 1
 T-cell receptor beta, variable 13
 Histone cluster 1, H2bp
 Recombining binding protein suppressor of hairless (Drosophila)
 Interleukin 4 receptor, alpha
 Ephrin B2

Name

Nuclear factor of activated T-cells, cytoplasmic, calcineurin-dependent 4
 Sestrin 3
 Jumonji domain containing 2B
 Expressed sequence AI662250
 RAB3A, member RAS oncogene family
 N-myc downstream regulated gene 1
 Glycerol-3-phosphate dehydrogenase 1-like
 Aldehyde dehydrogenase 4 family, member A1
 Pleckstrin homology domain containing, family G (with RhoGef domain) member 5
 DNA segment, Chr 9, ERATO Doi 280, expressed
 ATPase, Ca⁺⁺ transporting, plasma membrane 4
 Complement component 3
 Scleraxis
 Sorbitol dehydrogenase
 Cell adhesion molecule-related/down-regulated by oncogenes
 Transducin-like enhancer of split 6, homolog of Drosophila E(spl)
 Doublecortin and calcium/calmodulin-dependent protein kinase-like 1
 SRY-box containing gene 9
 Fibroblast growth factor receptor 2
 WD repeat domain 6
 G protein-coupled receptor, family C, group 5, member B
 Arginyl aminopeptidase (aminopeptidase B)
 Acyl-CoA thioesterase 1
 Patched homolog 1
 N-myc downstream regulated gene 1
 High mobility group box transcription factor 1
 Carnitine palmitoyltransferase 1a, liver
 Acyl-Coenzyme A oxidase 2, branched chain
 Discoidin domain receptor family, member 1
 Arrestin, beta 1
 Growth arrest specific 7
 Yippee-like 3 (Drosophila)
 Basic helix-loop-helix domain containing, class B3

Eph receptor B6
NUAK family, SNF1-like kinase, 1
High mobility group box transcription factor 1
Kelch domain containing 8A
Solute carrier family 2 (facilitated glucose transporter), member 6
Vitamin D receptor
Fos-like antigen 2
Serum amyloid A 2
Expressed sequence AU041783
Ras homolog gene family, member B
Microtubule-associated protein, RP/EB family, member 3
Transformation related protein 53 inducible nuclear protein 2
Nitric oxide synthase 2, inducible, macrophage
Transmembrane protein 53
Eph receptor B6
Rho guanine nucleotide exchange factor (GEF) 19
G protein-coupled receptor 56
D site albumin promoter binding protein
DNA-damage-inducible transcript 4
ATP-binding cassette, sub-family C (CFTR/MRP), member 3
Nitric oxide synthase 2, inducible, macrophage
Yippee-like 3 (Drosophila)
Transmembrane inner ear
Gene model 967, (NCBI)
Aldehyde dehydrogenase 1 family, member L1
CDNA sequence BC025575
Recoverin
SRY-box containing gene 4
Adrenergic receptor, alpha 1b
Cytochrome P450, family 26, subfamily b, polypeptide 1
Kinesin light chain 4
Acid phosphatase-like 2
Proline arginine-rich end leucine-rich repeat
CDC42 effector protein (Rho GTPase binding) 2
Armadillo repeat gene deleted in velo-cardio-facial syndrome
EH-domain containing 3
LIM motif-containing protein kinase 2
Selenium binding protein 1
Selenium binding protein 2
Serum amyloid A 3
Expressed sequence AI646023
Forkhead box Q1
Gamma-glutamyltransferase 6
STEAP family member 4
STEAP family member 4

C1q and tumor necrosis factor related protein 1
 Max dimerization protein 4

Name

Mitogen regulated protein, proliferin 4
 Proliferin
 Epithelial membrane protein 1
 Solute carrier organic anion transporter family, member 4a1
 Shugoshin-like 1 (*S. pombe*)
 Rho GTPase activating protein 11A
 Inhibitor of DNA binding 1
 Fos-like antigen 1
 Rho GTPase activating protein 19
 Amphiregulin
 Dual specificity phosphatase 6
 Baculoviral IAP repeat-containing 5
 POU domain, class 2, associating factor 1
 Sema domain, transmembrane domain (TM), and cytoplasmic domain, (semaphorin) 6B
 Glutathione S-transferase, alpha 1 (Ya)
 Matrix metalloproteinase 9
 Cyclin A2
 On-SMC condensin I complex, subunit G
 BRCA1 associated RING domain 1
 Kinesin family member 14
 Extra spindle poles-like 1 (*S. cerevisiae*)
 DNA segment, Chr 2, ERATO Doi 750, expressed
 NIMA (never in mitosis gene a)-related expressed kinase 2
 Centromere protein A
 Hyaluronan mediated motility receptor (RHAMM)
 Cytoskeleton associated protein 2-like
 Anillin, actin binding protein (scraps homolog, *Drosophila*)
 DNA segment, Chr 17, human D6S56E 5
 Centromere protein M
 Aurora kinase A
 Cell division cycle associated 3
 Nucleolar and spindle associated protein 1
 Ribonucleotide reductase M2
 GINS complex subunit 1 (Psf1 homolog)
 Fanconi anemia, complementation group D2
 RecQ protein-like 4
 Trophinin associated protein
 Myeloblastosis oncogene-like 2
 CDNA sequence BC030867
 Cyclin B1

Histone cluster 1, H2bp
Essential meiotic endonuclease 1 homolog 1 (*S. pombe*)
Transforming, acidic coiled-coil containing protein 3
HIRA interacting protein 3
Polo-like kinase 4 (*Drosophila*)
Cyclin B2
Cell division cycle 25 homolog B (*S. cerevisiae*)
Kinesin family member 22
Cell division cycle 25 homolog C (*S. cerevisiae*)
Solute carrier family 7 (cationic amino acid transporter, y+ system), member 11
TRAF-interacting protein
Polo-like kinase 1 (*Drosophila*)
Kinesin family member C1
Centromere protein M
Exonuclease 1
Kinesin family member 23
CTF18, chromosome transmission fidelity factor 18 homolog (*S. cerevisiae*)
Sprouty homolog 1 (*Drosophila*)
CDC28 protein kinase regulatory subunit 2
F-box protein 5
Cell division cycle associated 2
Lipase, endothelial
Dual specificity phosphatase 4
Kinesin family member 2C
X-linked myotubular myopathy gene 1
Sperm associated antigen 5
Histone cluster 1, H3g
CDNA sequence BC048355
Pituitary tumor-transforming 1
Cell division cycle associated 8
RAD54 like (*S. cerevisiae*)
E2F transcription factor 8
Non-SMC condensin I complex, subunit D2
Sialophorin
BRCA1 interacting protein C-terminal helicase 1
Hypothetical protein 9530076L18
Polymerase (DNA directed), epsilon
Histone cluster 1, H1d
Tripartite motif protein 24
Aryl hydrocarbon receptor nuclear translocator-like 2
Aurora kinase B
Solute carrier family 11 (proton-coupled divalent metal ion transporters), member 1
Histone cluster 1, H2bk
Histone cluster 1, H2ao
Cell division cycle 6 homolog (*S. cerevisiae*)

MAD2 (mitotic arrest deficient, homolog)-like 1 (yeast)
Inner centromere protein
Solute carrier family 14 (urea transporter), member 1
Chemokine (C-X-C motif) ligand 10
CDNA sequence BC048355
Replication factor C (activator 1) 5
Cytoskeleton associated protein 2
Ubiquitin-like, containing PHD and RING finger domains, 1
Replication factor C (activator 1) 4
Topoisomerase (DNA) II alpha
Non-SMC condensin I complex, subunit D2
Histone cluster 1, H2bp
Aldehyde dehydrogenase family 3, subfamily A1
Centromere protein H
Histone cluster 1, H2af
Fidgetin-like 1
IQ motif containing GTPase activating protein 3
RAD51 homolog (*S. cerevisiae*)
Polyamine-modulated factor 1
Secreted phosphoprotein 1
Protein kinase, membrane associated tyrosine/threonine 1
Stathmin 1
Chromatin assembly factor 1, subunit A (p150)
Budding uninhibited by benzimidazoles 1 homolog, beta (*S. cerevisiae*)
Citron
Immunoglobulin superfamily, member 1
Cell division cycle associated 5
Tubulin, beta 6
Translocase of outer mitochondrial membrane 40 homolog (yeast)
Taste receptor, type 2, member 117
IQ motif containing GTPase activating protein 3
Histone cluster 1, H2ac
Histone cluster 1, H2be
Histone cluster 1, H3f
Wingless-related MMTV integration site 11
Non-SMC condensin I complex, subunit H
Kinesin family member 20A
Vomer nasal 1 receptor, H16
Proline rich 11
DEAD (Asp-Glu-Ala-Asp) box polypeptide 39
Cell division cycle 45 homolog (*S. cerevisiae*)-like
Topoisomerase (DNA) II beta binding protein
High mobility group AT-hook 1
Polymerase (DNA directed), epsilon 2 (p59 subunit)
CDNA sequence BC055324

Prostaglandin-endoperoxide synthase 2
Spindle pole body component 24 homolog (S. cerevisiae)
Regulator of telomere elongation helicase 1
Expressed sequence AI447904
Histone cluster 1, H4f
WD repeat domain 51A
Histone cluster 1, H2bm
Geminin
Transmembrane protein 48
Chromatin licensing and DNA replication factor 1
Origin recognition complex, subunit 1-like (S.cerevisiae)
Stathmin 1
Cyclin D1
DEK oncogene (DNA binding)
Proteasome (prosome, macropain) 26S subunit, ATPase 3, interacting protein
FXD domain-containing ion transport regulator 5
Minichromosome maintenance deficient 7 (S. cerevisiae)
Integrin beta 7
Transcription factor 19
Cerebellin 4 precursor protein
RAD51 associated protein 1
Tubulin, alpha 6
Dopey family member 2
DNA segment, Chr 14, ERATO Doi 500, expressed
Replication factor C (activator 1) 3
Syntaxin binding protein 5-like
G-protein signalling modulator 2 (AGS3-like, C. elegans)
Histone cluster 2, H4
Translocase of inner mitochondrial membrane 8 homolog a1 (yeast)
Olfactory receptor 1359
WD repeat domain 51A
WD repeat domain 62
Translocase of inner mitochondrial membrane 8 homolog a1 (yeast)
Histone cluster 1, H4b
Histone cluster 1, H2bl
Smoothelin
Sprouty protein with EVH-1 domain 1, related sequence
Hypocretin (orexin) receptor 1
Nucleoporin 85
Discs, large homolog 7 (Drosophila)
High mobility group AT-hook 1
Nurim (nuclear envelope membrane protein)
Terf1 (TRF1)-interacting nuclear factor 2
Translocase of inner mitochondrial membrane 8 homolog a2 (yeast)
Solute carrier family 7 (cationic amino acid transporter, y+ system), member 11

HtrA serine peptidase 3
 Protein kinase N3
 Thymidylate synthase
 Histone cluster 1, H2an
 PAS domain containing serine/threonine kinase
 CDC28 protein kinase 1b
 Interferon-related developmental regulator 2
 Ubiquitin-conjugating enzyme E2T (putative)
 HtrA serine peptidase 3
 Exophilin 5
 DNA primase, p49 subunit
 Forkhead box M1
 TPX2, microtubule-associated protein homolog (*Xenopus laevis*)
 Minichromosome maintenance deficient 5, cell division cycle 46 (*S. cerevisiae*)
 Similar to keratin associated protein 10-7
 ASF1 anti-silencing function 1 homolog B (*S. cerevisiae*)
 Keratin associated protein 4-7
 Secretory blood group 1
 RAN binding protein 1
 Inhibin beta-A
 Centrosomal protein 192
 Helicase, lymphoid specific
 Transferrin receptor
 Wilms' tumour 1-associating protein
 Disabled homolog 2 (*Drosophila*)
 Chemokine-like factor
 Suppressor of variegation 3-9 homolog 1 (*Drosophila*)
 Interferon-related developmental regulator 1
 Unc-5 homolog B (*C. elegans*)
 Kinesin family member 4
 H2A histone family, member X
 Vaccinia related kinase 1
 Nuclear factor of kappa light polypeptide gene enhancer in B-cells inhibitor-like 2
 Hypothetical gene supported by AK028256

Name

Glycerophosphodiester phosphodiesterase domain containing 2
 Aldehyde oxidase 3
 T-complex 11 (mouse) like 2
 Ribosomal protein S14
 Zwilch, kinetochore associated, homolog (*Drosophila*)
 Interferon induced transmembrane protein 1
 Clusterin
 Gene model 462, (NCBI)

Spondin 1, (f-spondin) extracellular matrix protein
Flavin containing monooxygenase 1
Proline arginine-rich end leucine-rich repeat
Serum amyloid A 2
Doublecortin and calcium/calmodulin-dependent protein kinase-like 1
Crystallin, beta B1
Max dimerization protein 4
Transcobalamin 2
Maestro
Serine/threonine/tyrosine kinase 1
Corneodesmosin
Complement factor B
PDZK1 interacting protein 1
6-phosphofructo-2-kinase/fructose-2,6-biphosphatase 3
Secreted and transmembrane 1B
Procollagen, type XV
AE binding protein 1
C1q and tumor necrosis factor related protein 1
Max dimerization protein 4
Host cell factor C1 regulator 1 (XPO1-dependent)
Chitinase 3-like 1
Armadillo repeat gene deleted in velo-cardio-facial syndrome
Camello-like 3
Connective tissue growth factor
Tetraspanin 32
Eph receptor B6
ABI gene family, member 3 (NESH) binding protein
Synaptopodin
Potassium inwardly-rectifying channel, subfamily J, member 16
Heparan sulfate (glucosamine) 3-O-sulfotransferase 1
Cytochrome b-245, beta polypeptide
Serum amyloid A 1
Fibroblast growth factor binding protein 1
Carbonic anhydrase 3
Transmembrane protein 150
Zinc finger homeobox 1b
Patched homolog 1
LIM motif-containing protein kinase 2
Loss of heterozygosity, 11, chromosomal region 2, gene A homolog (human)
Scavenger receptor class A, member 5 (putative)
Integrin, alpha 10
Haptoglobin
Glutathione S-transferase, mu 7
Eph receptor B6
ATPase, Ca⁺⁺ transporting, plasma membrane 4

STEAP family member 4
Fibroblast growth factor receptor 2
CDC42 effector protein (Rho GTPase binding) 2
Homeobox only domain
Procollagen, type VI, alpha 2
Phytanoyl-CoA hydroxylase
Pyruvate dehydrogenase kinase, isoenzyme 2
N-myc downstream regulated gene 1
Acetyl-Coenzyme A acyltransferase 1A
Glypican 6
Dystrophia myotonica-protein kinase
Procollagen, type VI, alpha 1
Complement component 8, gamma subunit
Carboxymethylenebutenolidase-like (Pseudomonas)
Crystallin, alpha B
C-type lectin domain family 2, member d
Histamine receptor H 2
Lipopolysaccharide binding protein
Complement component 8, gamma subunit
Secreted acidic cysteine rich glycoprotein
Patched homolog 1
Major facilitator superfamily domain containing 7
Interleukin 18
ATPase, Class I, type 8B, member 3
Sphingomyelin phosphodiesterase, acid-like 3B
Ubiquitin specific peptidase 2
Camello-like 1
N-myc downstream regulated gene 1
Keratin 80
Neuraminidase 1
Ectonucleotide pyrophosphatase/phosphodiesterase 5
Oncoprotein induced transcript 3
Plasma membrane associated protein, S3-12
Adenylosuccinate synthetase like 1
Adrenergic receptor, alpha 1b
Laminin, beta 3
Solute carrier family 2 (facilitated glucose transporter), member 6
Calcium binding and coiled coil domain 1
Endonuclease domain containing 1
G protein-coupled receptor 37-like 1
Yippee-like 2 (Drosophila)
Aldehyde oxidase 1
Programmed cell death 4
Fc fragment of IgG, low affinity IIIa, receptor
Interleukin 18 binding protein

Legumain
Intercellular adhesion molecule 5, telencephalin
Dipeptidylpeptidase 7
Endonuclease domain containing 1
Talin 2
Angiotensinogen (serpin peptidase inhibitor, clade A, member 8)
Apolipoprotein L, 6
Chemokine (C-C motif) ligand 8
BTB (POZ) domain containing 14A
N-acetyl galactosaminidase, alpha
Microsomal glutathione S-transferase 3
Kinesin light chain 4
Macrophage expressed gene 1
SLAM family member 8
Matrilin 2
SRY-box containing gene 4
Keratin 80
Talin 2
Endonuclease domain containing 1
Acyl-Coenzyme A oxidase 2, branched chain
G protein-coupled receptor 177
ATPase, Ca⁺⁺ transporting, plasma membrane 4
Fibulin 2
Dystrobrevin alpha
Thrombospondin 1
Catechol-O-methyltransferase
Fc receptor, IgG, alpha chain transporter
Complement component 3
DNA segment, Chr 5, ERATO Doi 40, expressed
Talin 2
Complement component 1, r subcomponent
Putative phosphatase
ATPase, Na⁺/K⁺ transporting, alpha 2 polypeptide
Nuclear antigen Sp100
Cysteine-rich protein 1 (intestinal)
Rho guanine nucleotide exchange factor (GEF) 10
Gene model 967, (NCBI)
Lipin 1
Procollagen, type III, alpha 1
Deltex 4 homolog (Drosophila)
CDNA sequence BC031353
Cysteine rich transmembrane BMP regulator 1 (chordin like)
Cysteine sulfinic acid decarboxylase
Kallikrein 1
Cysteine-rich protein 1 (intestinal)

Harvey rat sarcoma oncogene, subgroup R
Stannin
Glutathione S-transferase, mu 1
Gene model 967, (NCBI)
Calponin 2
PHD finger protein 1
Orosomucoid 1
TSPY-like 2
Kallikrein 1
Intercellular adhesion molecule 4, Landsteiner-Wiener blood group
Phospholipid transfer protein
Kinesin light chain 4
Cysteine rich transmembrane BMP regulator 1 (chordin like)
Matrix-remodelling associated 8
Receptor tyrosine kinase-like orphan receptor 1
Kallikrein 1-related peptidase b26
Sortilin 1
Shroom family member 3
Myristoylated alanine rich protein kinase C substrate
Phosphatase and actin regulator 1
Histone deacetylase 11
Ectonucleotide pyrophosphatase/phosphodiesterase 2
Tetraspanin 32
Poly (ADP-ribose) polymerase family, member 3
Serine dehydratase-like
Integrin, alpha 10

Accession number

NM_178685, AK083114, AK082617, AK086570
NM_010234, BC029814
XM_485982
NM_007913, AK037837, AK040925, M22326

Accession number

NM_010927, BC062378
NM_010927, BC062378
NM_007921, AF016294
NM_203320, AY311403
NM_010493, BC008626

Accession number

NM_009704, AK018590, AK020273, BC009138
NM_133753, AK004851, BC057646
NM_009344, U44088
NM_001001806, NM_007565, BC028330
NM_133662, AK051003, AK003466, X67644
NM_013807, BC031180
NM_011198, M88242
NM_176933, AK080964, AK053746
NM_008501, AK042018
NM_010139
NM_011361, AK086892, BC070401
NM_010415
NM_010235, BC052917
NM_010516, BC066019
NM_010849, AK087961, X01023
NM_010111, L38847
NM_010755, BC022952
NM_009372, AK008909
NM_009834, AK084516, AK087790, AK041713, U70139
NM_009372, AK008909, 2410047L16
NM_144551, AK080064, AK082329, BC037387
NM_001001738, BC063749
NM_011803, AK053584
D87966
NM_011113, AK002580, BC010309
NM_181444, BC036173, BC036174

NM_010499, AK032692
NM_028127, AK011469, BC053929
NM_010500, AF079527
NM_007569, CB057165, BC018309
NM_008008, AK033934, AK086639, AK037172
NM_178890, AK042322, BC054399
NM_177305, AK080335, AK080380, AK080743, BC049804
NM_008433, AK085752, AK010943
NM_011333
NM_011498, AK090032, AK048242
AK088318
NM_013820, AK036845, AJ238540
NM_013468, AK009655, AK009959, BC037138
NM_026331, NM_030054, AK050414, AF361699
NM_008359, AK010040, AK036587, AK080226, BC060219
NM_013654, AK078827
NM_008321, AK014306, AK002820, AK031499
XM_131399, BC058986
XM_284454, AK087491
NM_177876, AK082658, BC026744
NM_130447, AK014441, AF345951
NM_028712, AK045030, AK014462
NM_013562, AK078888
XM_126426, BC075632
NM_009035, AK028363, 1110064N24
BQ443264
NM_008377, D78572
NM_010757, BC014295
NM_018763
NM_145478, AK079623, BX523241, BC017621
NM_008416, AK044253, AK088643, BE914684, J03236
NM_008562, BC021638
NM_144808, AK090193, AK122197
NM_019472, AJ249706
NM_199221, BY748526
NM_011414, AK010170, CA462388
NM_010128, BC050899
AK030481, BC058238
XM_148990, AK041391, AK122441
NM_015747, BC015085
X65157
1110056B13, AK019206, AK048511
AK003962, AA867261
XM_148990, AK077748, AK030766, AK013732, AK082487, AK122441
NM_011658, M63650

NM_177364, AK089330, AK090119
BC039931
NM_017464, AK054179, AK083374, AK046357, AK033729, AK030985
XM_148990, AK079353
NM_008871, M33960

Accession number

NM_177740, AK082560, BC059072
NM_007921, AF016294
NM_026772, AK083004, AK003562
NM_008655, AK010420, BC023815
NM_013926, AK051905, AF180370
NM_030609
NM_011315
NM_008542, AK046602, AK004671
NM_024413, BC002120
NM_007420, 2310002E14, AK080276, AK080241, BC032883
NM_025886, AK010305, AK002243
NM_001004156, AK129198
NM_173427, AK045732, AK050048, AK052747
NM_145356, AK045522, BC070424
NM_011314
NM_023217, AK049632, AK012658, AK047835, AK003373, BC043041
XM_132830, AK076749
NM_133210, BC034886
NM_175661
NM_027248, AK053445, AB063578
AK012967, BC022600

Accession number

NM_010128, BC050899
NM_176933, AK080964, AK053746
NM_053108, AK013722
NM_007631, AK017834, AK053348, AK005352
NM_011198, M88242
NM_010139
NM_009344, U44088
NM_181444, BC036173, BC036174
NM_133662, AK051003, AK003466, X67644
BQ443264
NM_133167, AF237770
NM_016960, AK079862
NM_011113, AK002580, BC010309

NM_008501, AK042018
NM_013807, BC031180
AK088318
NM_011361, AK086892, BC070401
NM_013468, AK009655, AK009959, BC037138
BI733146
AK009268
NM_013898, AK088903, AK090079
NM_145478, AK079623, BX523241, BC017621
NM_011658, M63650
NM_001001806, NM_007565, BC028330
NM_018774, BC057571, AA048999
NM_009035, AK028363, 1110064N24
NM_015747, BC015085
XM_109598, XM_359260, AK004654
NM_008176
NM_144808, AK090193, AK122197
NM_009121, AK002531, AA624127
NM_011619, AK002340
D87966
NM_145495, BC011277
XM_127883, AK089891, AK036446, L38281
NM_009104, AK088907, M14223
NM_145978, 2310041E13, 4732462F18, BC024556, AA036196
NM_010162, X96639
NM_024457, BC033382
NM_030143, AK029362, AK053333

Accession number

NM_027984, AK009469, BC016454
NM_198860, BC055322
AB128033
NM_008239, BC047155
NM_153420, AK083712, AK084605, AK082059, AK043758, BC023960
NM_008597, AK018719
NM_021462, AK030830, BC010256
NM_024469
XM_358306, AK006128, BC048825
NM_029083, AK081046, AK017926
NM_011314
NM_010795, AK081850, BC053040
XM_149784, AK012678, AK018097, AK129175
NM_007584, AK031442, L57509

AK004614
NM_020510, AK048420
NM_026772, AK083004, AK003562
NM_001001326, NM_029811, AK008100, BC051034
NM_008572
NM_010110, AK034996
NM_001002267, AK009669
NM_177343, AK053173, AK052401
NM_019959, AK005484
NM_144554, NM_175093, BC012955
AK013062
NM_011448, AK049986
NM_178149, AK005141
NM_007498, BC019946
NM_011488
NM_009176, AK013016, AK005053
NM_010980, CB174481
NM_010884, AK004548
NM_007581, BC055926
NM_172415, AK028648, AK028570, BC059220

Accession number

NM_176933, AK080964, AK053746
NM_009396
NM_011896, AK014578, BC051977
NM_009344, U44088
NM_007631, AK017834, AK053348, AK005352
BI733146
NM_181444, BC036173, BC036174
BQ443264
NM_133662, AK051003, AK003466, X67644
NM_153800, AK046097, AK078218, AK052541
NM_009704, AK018590, AK020273, BC009138
NM_010128, BC050899
NM_010849, AK087961, X01023
NM_011198, M88242
NM_016660, J04179
NM_133167, AF237770
NM_010139
NM_007945, L21671
NM_007945, L21671
NM_029352, AY316312
NM_008433, AK085752, AK010943
NM_011521, D89571

NM_016693, AB021861
AK028354, AK034295, BC010200
NM_029770, AK018177
NM_001001806, NM_007565, BC028330
NM_011113, AK002580, BC010309
NM_018763
NM_133753, AK004851, BC057646
NM_026331, NM_030054, AK050414, AF361699
NM_009263
NM_011990, AK076322, AK089202
NM_018774, BC057571, AA048999
NM_011799, AK012192, AK075975, AK085020, BC052434
AK036786
NM_013562, AK078888
NM_001001738, BC063749
AK088068
NM_010176, M84145
NM_144808, AK090193, AK122197
NM_007778, M21952
NM_008176
NM_013749, 1600012O05, AK005530, AK005382
NM_178788, AK077663, AK039066
NM_144850, AK034265, BC020532
AK002673
AK047869, AK030143
NM_009769, AK087066, BC006646
NM_145478, AK079623, BX523241, BC017621
AK122404
NM_010495, AK008264
NM_023476, AK003901, AK087142, AB047402
NM_009528, AK087499
XM_149937, AK049525, 4432406C08
NM_027290, AK030780, AK010648, BC064314
AK038070
NM_145554, AK029008
NM_013609, M35075
NM_053073, AK030143, AK038580
NM_013565, AK044268, BC053031
NM_020296, BC016501
NM_011361, AK086892, BC070401
NM_009171, AK010439, BC026055
NM_011491, AK010318, AK046655
NM_011158, AK041013, AK081805
NM_008397, AK034186, AK045391, AK028752, AK083717, AK033255
NM_011567, D87966

NM_152804, BC035451
XM_131399, BC058986
NM_010516, BC066019
NM_009569, AF006492
AK088318
BF319633
NM_009035, AK028363, 1110064N24
NM_010557, AK088086, AK034466, M27960
NM_010111, L38847

Accession number

NM_023699, BC028928
NM_030261, AK017464
NM_172132, AK028962, BC007145
NM_178926, AK078549, AK089265
NM_009001, AK005362, AK005307, BC018451
NM_008681, NM_010884, AK004548, U52073
AK086382, AK172886
NM_175438
NM_001004156, AK129198
NM_177775, AK086367
NM_213616, AY560895
NM_009778, BC043338
NM_198885, AK013456, BC062161
NM_146126, AK004692, AK015059, BC054095
NM_021339, AK029199
NM_053254, AF145957
NM_019978, AK032424, AK034632, AF155819
AK030187
NM_201601, AK081810, BG915171
NM_031392, AK046119, AK052235, AK037181, BC050894
NM_022420, AF378831
NM_007921, AF016294
NM_012006, AK053680, BC040749
AK020715
NM_010884, AK004548
NM_153198
NM_013495, AK077454, AF017175
NM_053115, AJ238492
NM_007584, AK031442, L57509
AK004614
NM_008088, AK076926
NM_026875, AK004431
NM_024469

NM_007680, AK076442, AK087423
NM_001004363, AB182364
NM_153198, NM_177993, AK082770, AK006835, AK028949, AK028674
NM_144810, AK043039, AK044318, AK080356
NM_172659, AK079650, AK089246, BC025498
NM_009504, AK030339
NM_008037, AK089371, BC065131
NM_011314
NM_146102, AK048649, AK087449
NM_007483, AK013784
NM_133350, BC048833
NM_178111, AK003956, AK079304, BC043086
NM_010927, BC062378
NM_026837, AK004164, AK005885, AK005104, BC039805
AK076442
NM_172520, 6430573B13, AK053075
NM_018882, AK087268, BC034678
NM_016974, BC064094, BQ931318
NM_029083, AK081046, AK017926
XM_358306, AK006128, BC048825
NM_010927, BC062378
NM_025347, AK002925, AK003371
NM_146260, AK030341, AK031966
XM_355152
NM_027406, BC030730
NM_199200, BC064455
AK036086
NM_009238, AK028989, AK053840, BE995439
NM_007416, AK004891, AK043877
NM_175475, AK028272
NM_029091, AK004774
NM_153420, AK083712, AK084605, AK082059, AK043758, BC023960
NM_054077, AK047480, AK037150
NM_026772, AK083004, AK003562
NM_033474, AK044982, AK084886, AK051627, AK031855, BC056980
NM_020578, AK128964
NM_178149, AK005141
NM_009150, AK002447, BC011202
NM_019414, S56599
NM_011315
NM_198860, BC055322
NM_008239, BC047155
NM_027819, AK018485
NM_054098, AK003905
NM_054098, AK040760, CK031940

NM_019959, AK005484
AK013062

Accession number

NM_181852, CK021595
NM_011118, NM_011954, NM_031191, BE628968
NM_010128, BC050899
NM_148933, AK033598, BC030719
NM_028232, AK049517, AK014357
AK032639
NM_010495, AK008264
NM_010235, BC052917
XM_129333, AK016763, AK044841
NM_009704, AK018590, AK020273, BC009138
NM_026268, AK009131, AK005062, AK088468
NM_009689, AK038229, BC004702
NM_011136, AK088587
NM_013662, AF036585
NM_008181, CF786775
NM_013599, AK004651, BC046991
NM_009828, AK044924
XM_485604, AK017756, AJ237585
NM_007525, BC055362
XM_355234, BC054123
XM_484508, AK129072
NM_026412, AK013184, AK036374, AK006328, AK028590
NM_010892, BC057576
NM_007681, AK011399, AK040313, AK080283, AK041138, AK089033, AK053763, AK0
NM_013552, NM_013552
NM_181589, AK012040, BC053443
NM_028390, AK046102, AK004134, BC032164
NM_033075
NM_025639, NM_178269, XM_487040, AK011191, AK011793, AK011755, AK011464, /
NM_011497, AK085861, AK077513, BC014711
NM_013538, AK011313, AK028159, AK010409, AK008606, BC027172
NM_133851, AK076028, AK044819, AK042697
NM_009104, AK088907, M14223
XM_130416, AK013116
XM_132796, BC040776
NM_058214, AK090260, BC064680
XM_283286, AK077509, AK050381
NM_008652, AK028497
NM_153544, AK029811
NM_172301, AK088816

BF319633
NM_177752, AK078516
NM_011524, 5730574P12, AK076282, 2210019K18, AF156934
NM_172746, NM_172746, AK045122, BC055687, BC055687
NM_011495, AK006459, BC026785
NM_007630, AK013312, AK076122
AK004836, AK043730
NM_145588, AK075922, AK088033, AK084310, BC003427
NM_009860
AK036786
NM_011634, AK012948, AK012786, BC006929
NM_011121, L06144
NM_016761, NM_053173, BF537263, AF221102
NM_178269
NM_012012, AK028728
NM_024245, AK013939, AK076271, AK030771
NM_145409, AK052673, AK077947
NM_011896, AK014578, BC051977
NM_025415, AK077690, AK002451, AK004163
NM_025995, AK011820, BC053434
NM_175384, AK031313, BC067009
NM_010720, AK014047, AK090224
AK012530
NM_134471, AK088047, BB065339
AK088068
NM_017407, AK076619
NM_145073
BM936882
NM_013917, AK088387, AK002473, AK008704, AF071209
NM_026560, AK031571, AK076422, AK077920, AK076065, AK078404, AK077717, AK0
NM_009015, AK030753, AK088876, AK048078, AK017340, BC021643
XM_149937, AK049525, 4432406C08
NM_146171, AK019259, BC025460
NM_009259, AK077764
NM_178309, AK033205
AK035610
NM_011132, AF123502
NM_145713, AK054269
AK018532
NM_172309
NM_011496, AK075951, BC003261
NM_013612, AK090303
NM_175665
NM_178185, AA895993
NM_011799, AK012192, AK075975, AK085020, BC052434

NM_019499, AK082934, 5730513E19, AK008638, AK010401
NM_016692, AK088627, AK081841
NM_028122, AK012066, AK041979, BC058594
NM_021274, BC057150
NM_207161
XM_132348, AK011489
AK034534
NM_010931, BC022167
NM_145480, BC003335
NM_011623, AK033321, D12513
NM_146171, AK019259, AK011352, BC025460
NM_178202, CN834474
NM_007436, U12785
NM_021886, AK011738, AK011264, AK006208, AB017634
NM_175661
NM_021891, AK051324, AK088574, AK086769, AK051874
BC068159
NM_011234, AK076468, AK011242
NM_025928, AK078308, AK013787, AK012113, AK011174, CA321719
NM_009263
NM_023058, AK031787, AF175892
NM_019641, AK088251, AK012347, AK030082, AK014108, AK002606, AK012231, AKC
NM_013733, AK034839, BC053740
NM_009773, AK088502, AF107296
NM_007708, AF086824
NM_177915, AK030452
NM_026410, AK011701, AK010540, BC052904
NM_026473, AK009958, AK015255, BC008225
BC038887
NM_207021
BC068159
NM_178189, AK033518
NM_015787
NM_013548, AK010121
AK031573
NM_144818, AK042706, AK080433, AK045239, AK028919, BC021499
NM_009004, AK053280, AK084732, AK051995, AK083697, AK051201, AK083412
NM_134240
NM_175563, BC023918
NM_197982, AK011285
NM_009862, AF081536
NM_176979, AK129104
NM_016660, J04179
NM_011133, AK077592, BC063772
NM_201364, AK031594, BB401037

NM_011198, M88242
NM_026282, AK075950, AK011728
NM_001001882, BC057352
NM_175026, AK076726, AK080371
NM_175655
AK011064
NM_178200
NM_020567
NM_028355, BC021337
NM_026014, AK076527, AK083015, AK049163, AK012041, AK017609, AK028287, AK0
NM_011015, AK042130, AJ003133
XM_484659, AK002606, AK012231, AK013302
NM_007631, AK017834, AK053348, AK005352
NM_025900, AK007546, AK033451, BC055451
NM_008949
NM_008761, AK003068, BC031112
NM_008568, AK076059, D26091
NM_013566, AK078871
NM_025674, AK088479, AK078697
NM_175631, AK032406, AK032621
AK010920, AK077829, AK079525, 4933428A07, AK011379
NM_009448, BC022182
XM_359231, AK002808
NM_145462, AK087969, AK079161, AK079852, BC011095
XM_132528, BC027366
NM_172440, AK035159, BU609516
NM_029522, AK018084, AY081187
NM_178192, BY715949
NM_013898, AK088903, AK090079
CB174439
XM_135092, AK081217, AK011064, BC034901
BC054747
AK088903
NM_178193
NM_178199
NM_013870, AK085412, AK030932, AK009426, AK083947
NM_033524, BC041685
NM_198959, AY336083
NM_001002929, AK017632
NM_144553, AK085882
NM_134250, AF450241
NM_134122, 2610307M02
NM_145705, AK028952, AK016456, AK090324, AK037673
XM_127887, BB610254
NM_011990, AK076322, AK089202

AK035194
NM_153805, BC034126
NM_021288, AK011435, AK035663, AK088134, AK088606
NM_178184
NM_080850, AK083590, AK028435, AK083528, AK081074
NM_016904, AK019429, AK004101, AK011314, AK011782
NM_025903, AK002702, AK007687, BC037434
NM_026024, AK012565, AK021213
NM_030127, AK035194, AK008764
NM_176846, AK172984
NM_008921, AK089063, AK011456, AK088557
NM_008021, AK049177, BC075723
NM_028109, AK011311, BC060619
NM_008566, AK088558, AK051795, AK033196
XM_358393, AK020700
NM_024184, AK077005, AK077718, AK005646
NM_029613, AK009665
NM_019934, AK030246
NM_011239, AK002989, AK088781, AK008276, BC061140
NM_008380, BC053527
AK052420
NM_008234, AK013266, BC020056
NM_011638, AK011596, BC054522
NM_175394, AK041341, BC047338
NM_023118, BC016887
NM_029295, AK005577, AK050112, AK046397
NM_011514, AK088405, AF019969
NM_013562, AK078888
NM_029770, AK018177
NM_008446, AK084837, D12646
NM_010436, AK088040, BC010336
NM_011705, AK039554, AK032344, AK088674, AK088230
NM_183091, AK013272, BC066068
NM_001005856, CB273708

Accession number

NM_023608, AK086508, AK018634, BC038274
NM_023617, AK004700, AK030109, AF172276
NM_146008, AK088802, BC029663
NM_010545, AK020607, AK002232, BC061489
NM_145835, AK053515, AF309072
NM_026820, AK004121
NM_013492
XM_145025, BU703060

NM_145584, AK173021
NM_010231, AK034946
NM_054077, AK047480, AK037150
NM_011314
NM_019978, AK032424, AK034632, AF155819
NM_023695, AK014012, AK053869, CA326454
AK013062
NM_015749
NM_027741, AY243876
AK035247
XM_111684, XM_359287, XM_489803, BC055373
NM_008198, M57890
NM_026018, AK007936, AK002288, AK012305, AK008253
NM_133232, BC052400
NM_026907, AK029082, AK007321
NM_009928, AF011450
NM_009636, AK004712, AK128980, AA839479
NM_019959, AK005484
NM_010753, AK007824
NM_181821, AK013438, AK003865
NM_007695, AK051475, BC005611
NM_033474, AK044982, AK084886, AK051627, AK031855, BC056980
NM_023455, AK002784, BC019517
NM_010217
AK041748
AK076442
XM_359276, AK077287
AK049810, AK034012
NM_010604, AK078905, BC033442
NM_010474, AK087753, AF019385
NM_007807, AK053920, AK033570, BC042838
NM_009117
NM_008009, BC065774, BQ918193
NM_007606
NM_144916, BC028825
XM_484995, BC065800
AK020715
NM_178149, AK005141
NM_172767, AK018055, AK053665, AK054497, AY366502
NM_028903, AK084591, BC016096
XM_112192, XM_207773, AK037222
NM_017370
XM_289885, XM_359308, AK002213, BC051924
NM_007680, AK076442, AK087423
AK033259

NM_054098, AK040760, CK031940
NM_201601, AK081810, BG915171
NM_026772, AK083004, AK003562
AK009007
NM_146007, BC034414
NM_010726, BC002018
NM_133667, AK002647, AF267660
NM_010884, AK004548
NM_146230, AY273812
AK020118
BC056615
NM_009933, AK029428, AK027944, BB797268, X66405
XM_130127, AK005962
NM_181588, AK009374, BC024580
NM_009964
NM_053109, AY320031
NM_008286, AK020259, AF513035
NM_008489, X99347
XM_130127, AI574103
NM_009242, AK014286, CB588543
NM_008957, U46155
NM_172883, AK029021, BX640083
NM_008360, AK078100
NM_026094, AY364445
NM_133888, AK004242, BC009087
NM_016808, NM_198091, NM_198092, BC017517
NM_023160, AK003301, AK002975
NM_008681, NM_010884, AK004548, U52073
XM_283319, AK009738, AK036900
NM_010893, AK077444
NM_032003, AK032341, AF233377
NM_010959, AK050081, AK040570
NM_020568, AK080156, AF064748, AK173286
NM_007421, AK089520, BC039943
NM_007416, AK004891, AK043877
NM_008484, AK078970, BC008516
NM_172659, AK079650, AK089246, BC025498
NM_026192, AK035598, AK007393, AK018734
NM_028013, AK078056, AK086102, AK079741, AK173036
NM_134438, AK019303, AB016602
AK021387
NM_009676, AB017482
NM_011050, D86344
AK076532, AK087863
NM_010531, AK003370, AK008452, 2310075112, AK009721, AF110802

NM_011175, AJ000990
NM_008319, U06483
NM_031843, AK028293
NM_028013, AK078056, AK173036
XM_486227, AK029828, AK017597
NM_007428, AK005354, AK018763, BC054387
XM_484487, AK010208
NM_021443, AK007942, AI604201
AK076376, AK003878
NM_008669, AK077116
NM_025569, AK003492, AK003246, AK003309, AK003476
NM_029091, AK004774
XM_129176, AK030216, L20315
XM_129596, AK017911, BC024587
NM_016762
NM_009238, AK028989, AK053840, BE995439
XM_283319, AK036900, AK004811
XM_486227, AK052301, AF467081
AK008924
NM_053115, AJ238492
NM_026582, 3110050D23, AK029104, AK049842, AK044810, AK029053, AK019886
NM_213616, AY560895
NM_007992, X75285
NM_207650
NM_011580, AK080686, BC050917
NM_007744, BC010402
NM_010189, BC003786
NM_009778, BC043338
XM_149654, AK054325, AK087477, AK044446
AK017597
NM_023143, AF148216
NM_008916, AK054436, AK052817
NM_178405, BC036127
XM_486504, BC069971
NM_007763
NM_172751, AK032452, BC066074
XM_355152
NM_172950, AK030921
NM_009930, AK041115, AK029212, AK048546, AK029451, AK019448, AK079113, BC
NM_172442, BC058647
NM_153584, 6330415I01, AK173161
XM_128751, AK034889, AK018666, AK053197, AK050147
NM_144942, AK005015, AY033912
NM_010915
AK012068, AK088267, AK008269, AK003075, BC030406

NM_009101
NM_009223, BC038475
AK015265
XM_355152
NM_007725, AK051845, 2700094G09, Z19543
NM_009343, AK076365
NM_008768
NM_029836, NM_145936, BC054393
NM_010643, AB039277
NM_023892, AK019013, AA050210
NM_011125, BC003782
NM_029091, AK004774
XM_128751, AK034889, AK018666, AK053197
NM_024263, AK004732, BC026438
NM_013845, AK087548, AK046699, AK049369
NM_010642, BF300069
NM_019972, AK013673, BC056343
NM_015756, AF199421
NM_008538, AK017779, M60474
NM_001005740, NM_001005748, NM_198419, AK048208, BC061691
NM_144919, AK045994, BC016208
NM_015744, AK088491
NM_020286
NM_145619, AF368233
NM_133902, AK014487, AF328927
XM_112192

Ratio

3,20
2,30
2,10
1,90

Ratio

0,30
0,40
0,40
0,50
0,50

Ratio

8,70
8,50
6,10
5,50
5,10
4,70
4,70
4,30
4,10
4,00
4,00
3,70
3,70
3,60
3,20
2,90
2,90
2,80
2,80
2,70
2,70
2,60
2,60
2,60
2,60
2,50

2,50
2,50
2,40
2,40
2,40
2,40
2,40
2,30
2,30
2,30
2,30
2,30
2,30
2,30
2,30
2,20
2,10
2,10
2,10
2,10
2,10
2,10
2,10
2,10
2,10
2,10
2,10
2,00
2,00
2,00
2,00
2,00
2,00
2,00
2,00
2,00
2,00
2,00
2,00
2,00
1,90
1,90
1,90
1,90
1,90
1,90
1,90
1,90
1,90

1,90
1,90
1,90
1,90
1,90

Ratio

0,30
0,40
0,40
0,40
0,40
0,40
0,40
0,50
0,50
0,50
0,50
0,50
0,50
0,50
0,50
0,50
0,50
0,50
0,50
0,50

Ratio

7,33
5,726
5,49
5,346
4,805
4,16
4,131
3,954
3,839
3,276
3,213
3,207
3,193

2,998
2,916
2,877
2,812
2,65
2,599
2,556
2,471
2,469
2,411
2,395
2,392
2,37
2,359
2,351
2,323
2,319
2,301
2,296
2,282
2,271
2,25
2,234
2,214
2,203
2,179
2,163

Ratio
0,241
0,278
0,289
0,292
0,315
0,32
0,325
0,327
0,335
0,337
0,342
0,353
0,362
0,374

0,377
0,38
0,384
0,388
0,39
0,393
0,396
0,402
0,404
0,41
0,412
0,413
0,415
0,416
0,419
0,425
0,428
0,431
0,432
0,446

Ratio
8,998
8,55
8,253
6,93
5,048
5,007
4,931
4,586
4,25
4,21
3,898
3,716
3,713
3,712
3,678
3,455
3,421
3,413
3,322
3,285
3,282
3,269

3,247
3,245
3,165
3,149
3,013
3,01
3,006
2,813
2,781
2,73
2,725
2,683
2,57
2,567
2,552
2,538
2,513
2,489
2,482
2,477
2,477
2,472
2,461
2,413
2,407
2,405
2,403
2,399
2,399
2,397
2,382
2,375
2,371
2,368
2,345
2,344
2,325
2,286
2,282
2,246
2,245
2,244
2,241
2,239
2,22

2,219
2,214
2,213
2,207
2,204
2,204
2,203
2,184
2,182

Ratio

0,448
0,446
0,445
0,439
0,437
0,436
0,434
0,433
0,433
0,431
0,43
0,428
0,427
0,42
0,419
0,419
0,414
0,41
0,408
0,406
0,405
0,405
0,403
0,402
0,4
0,398
0,394
0,39
0,389
0,389
0,381
0,379
0,379

0,378
0,377
0,373
0,372
0,371
0,37
0,367
0,357
0,356
0,354
0,354
0,341
0,333
0,323
0,323
0,319
0,318
0,314
0,313
0,312
0,307
0,305
0,296
0,294
0,291
0,289
0,285
0,267
0,266
0,266
0,264
0,264
0,251
0,25
0,247
0,247
0,246
0,235
0,233
0,23
0,213
0,211
0,197
0,174
0,164

0,145
0,134

Ratio

13,67
13,11
5,10
3,96
3,96
3,93
3,90
3,82
3,81
3,78
3,76
3,72
3,69
3,69
3,66
3,64
3,57
3,55
3,52
3,52
3,51
3,51
3,50
3,46
3,45
3,45
3,34
3,34
3,33
3,29
3,28
3,28
3,28
3,27
3,26
3,24
3,20
3,18
3,18
3,18

3,16
3,15
3,14
3,13
3,13
3,11
3,08
3,07
3,07
3,04
3,04
3,01
3,01
3,00
3,00
3,00
3,00
2,99
2,97
2,95
2,95
2,95
2,94
2,94
2,91
2,91
2,90
2,89
2,87
2,87
2,87
2,86
2,85
2,85
2,82
2,82
2,82
2,82
2,81
2,81
2,80
2,78
2,78
2,76
2,74

2,73
2,72
2,71
2,70
2,70
2,70
2,70
2,68
2,67
2,67
2,66
2,65
2,65
2,64
2,64
2,64
2,63
2,63
2,63
2,62
2,62
2,62
2,61
2,61
2,61
2,58
2,56
2,56
2,56
2,55
2,54
2,54
2,53
2,53
2,52
2,52
2,52
2,51
2,50
2,47
2,47
2,46
2,46
2,46
2,45

2,45
2,44
2,44
2,43
2,43
2,43
2,42
2,42
2,42
2,42
2,41
2,40
2,40
2,38
2,38
2,37
2,37
2,36
2,36
2,33
2,33
2,32
2,32
2,32
2,32
2,32
2,30
2,30
2,30
2,30
2,30
2,29
2,29
2,29
2,29
2,29
2,28
2,28
2,27
2,27
2,27
2,26
2,26
2,26

2,25
2,25
2,25
2,25
2,25
2,25
2,24
2,24
2,24
2,23
2,23
2,23
2,23
2,22
2,21
2,21
2,21
2,20
2,20
2,20
2,18
2,17
2,17
2,16
2,16
2,16
2,15
2,15
2,15
2,14
2,13
2,13
2,13
2,13

Ratio

0,08
0,13
0,17
0,19
0,20
0,20
0,21
0,22

0,35
0,35
0,35
0,36
0,36
0,36
0,36
0,36
0,36
0,37
0,37
0,37
0,37
0,37
0,37
0,37
0,38
0,38
0,38
0,38
0,38
0,39
0,39
0,39
0,39
0,39
0,39
0,39
0,39
0,39
0,39
0,39
0,39
0,39
0,40
0,40
0,40
0,40
0,40
0,40
0,40
0,40
0,40
0,40

0,45
0,45
0,45
0,45
0,45
0,45
0,45
0,45
0,45
0,45
0,45
0,45
0,45
0,45
0,45
0,45
0,45
0,45
0,46
0,46
0,46
0,46
0,46
0,46
0,46

Table S3 The 400 most

Gene symbol

Aurka
Tacc3
Ccnb2
Pttg1
Tnfaip2
Tubb6
Hmga1
Trim16
Birc5
Csf1
Mcm5
Cdc45l
Fgfr1
Cdca8
Cenpa
Nek2
Cyr61
Kif22
Apcdd1
Ctgf
Pvr
Gdpd2
Stc2
Acpl2
Glx
Bcl2l11
Myc
Lmcd1
Pola2
Cdca5
Rad54l
Cdc20
Arhgap22
Mybl2
Tk1
Aurkb
Efnb1
Prep
Cenpm
Rasa3
Ddx39
Spbc24
Lig1
Rfc5
Shroom3
Nup85
Trp53inp2
Tln2
Troap
Ndrp1
D2Ert750e
Incenp
Amotl2

Cenpm
Limk2
Scmh1
Mgat3
Ppap2a
Suv39h1
Id1
Cdt1
Slc39a14
Pdlim2
Cdca3
Arrb1
Ddit4
Tns1
Plk1
Bcl2l1
Clu
Btg2
Tmem109
Nip7
Ddit4l
Gas7
Eme1
Kif20a
Cks2
Pmf1
Foxm1
Rfc3
Kif2c
Lgals3
Egln3
Errfi1
Shroom3
Coq7
C1qtnf1
Plaur
Rfc2
Rapgef3
Reep4
Gtf3a
Cdc6
Tgif
Mcm3
Ibrdc3
Chtf18
Ivd
Plekhq1
H2afx
Snf1lk
Esp1
Hirip3
Ccnd1
Mxd4
Hist1h2an
Iqgap3
Stmn1

H2afv
Traf5
Nfkbil2
Smpd13b
Ndr3
Lgmn
Nrf1
Atp2b4
Bub1b
Gpmb
D9Ert280e
Ars2
Adamts14
Dusp4
Uhrf1
Sparc
Iqgap3
Hist1h2bl
St5
Tln2
Exosc7
Smad3
Saa1
Fah
Comt
Olfml3
Shmt1
Bcat1
Tmepai
Ncapd2
Wnt7b
Lif
Sox9
Gsta1
Otub2
Gle1l
Tapbp
Aldh3a1
Chaf1a
Fosl2
Nup62
Ngfb
Linc
Il12rb1
Bhlhb2
Cxcl10
Cd300lb
Cdc25b
Prdx5
Ncaph
Noc2l
Cdc42ep2
Arhgef7
Rin1
Mxd3
Ube2s

Sertad4
Cryab
Soat1
Tead4
Galm
Cdkn2d
Ankrd47
Tubg1
Cks1b
Ndrp1
Fosl1
Fanca
Ppif
lfrd2
Ercc1
Zfand2a
Rcvrn
Ppan
Lbp
Chaf1b
Stard8
Endod1
St3gal4
Ccrn4l
Sord
Rps14
Sox9
Lsm2
Col4a2
Prmt1
Hbegf
Kifc1
Pgam5
Csnk1e
Grn
Tns1
Lrrc54
U2af1
Rangap1
Zfp324
Gchfr
Tmem39a
Ppap2b
Seph2
Klhdc7a
Mrps6
Mical2
Adarb1
Nf2
Fgfr2
Plxna1
Sesn3
Tyms
Snrpg
Fen1
Apccdd1

Lig1
Tubb2c
Spon1
Dtymk
Ung
Wsb2
Tagln2
Gtpbp2
Vdr
Shb
Pak4
Hist2h4
Lpin1
Gabarapl1
Ldlr
Fxyd5
Atp2b4
Hist1h2ao
Ancy
Psp
Oaz2
Dusp7
Tuba4
Parvb
Rnf126
Slc2a1
Smpd3
Hn1
Pten
Car13
St3gal1
Hist1h4f
Rnaseh2c
Htra3
Dusp4
H1f0
Wdr42a
Pscd3
Orm1
Ccna2
Mdc1
Mafk
Fbxo25
Ypel3
Prim2
Gabpb2
Tgif
Pcyox1l
Gjb3
Zfp36l1
Hist1h2bm
Pkmyt1
Ptch1
D11Ert497e
Pck2
Ier3

Pxmp4
Timp2
Arhgef19
Kctd13
Pcolce
Tln2
Rps8
Zfp36l2
Sox4
Cdca7
Tnfrsf9
Dbp
Unc93b1
Igsf1
Hist1h2bk
Ncaph2
Wdr62
Foxd1
Htf9c
Zmat3
Ets2
Dusp6
Cdk2ap1
Wdr51a
PIk3
E2f4
Top3a
Cd81
Hisppd2a
Ard1
Atf4
D17H6S56E-5
Neu1
Hist1h2ak
Tacc2
Mrps18b
Map3k6
Tnnt2
Irf2bp2
Cyp26b1
Jun
Cpeb4
Traf5
Abcc5
Dusp1
Pold2
PIk2
Car5b
Ncapd2
Chd3
Capg
Fasn
Pdgfrl
Hist2h4
Nsun5
Angptl2

D11Lgp2e
Lmnb2
Sh3pxd2a
Mrps25
Zbed3
Nrm
Plcb4
Nedd9
Pdhx
Ccgc93
Scara5
Bcat1
Atg7
Atf3
Shmt2
Toe1
Lsm4
Bhlhb3
Mxd4
St6galnac4
Tcfap2a
Baiap2
Stk40
Arfgap3
Jub
Dusp10
Osblp5
Srm
Srebf2
Dtx4
Ext2
Psrc1
Sod3
Ttc28
Abcc3
Dcamk1
Srgap3
Erdr1
Klf5
Cst3
Thoc4
Jmjd2a
Gcn5l2
Bin1
Heg1
Ccgc86
Tapbp1
Slc16a3
Gadd45g
Clstn1
Nfil3
Psmc3ip
Klhdc4
Pim3
Limk2
Aldh18a1

Atp11a
Atp6v0a1
Podxl
Rab3a
Tpp1
Bola2
Vasp
Cep250
Nf2
Usp10
Hist1h2be

t differentially expressed genes in response to FGF-8b during the 1-24 h time course

Accession number

NM_011497|AK085861|AK077513|BC014711
NM_011524|5730574P12|AK076282|2210019K18|AF156934
NM_007630|AK013312|AK076122|NULL
NM_013917|AK088387|AK002473|AK008704|AF071209
NM_009396|NULL|NULL
NM_026473|AK009958|AK015255|BC008225
NM_016660|NULL|J04179
NULL|AK078902|AK053139|NULL
NM_009689|AK038229|BC004702
NM_007778|NULL|M21952
NM_008566|AK088558|AK051795|AK033196|NULL
NM_009862|NULL|AF081536
NULL|AK028354|AK034295|BC010200
NM_026560
NM_007681|
NM_010892|NULL|BC057576
NM_010516|NULL|BC066019
NM_145588|AK075922|AK088033|AK084310|BC003427
NULL|NULL|BI733146
NM_010217|NULL|NULL
NM_009310|NM_027514|AK078344|AK080753|AK038747|BC013673
NM_023608|AK086508|AK018634|BC038274
NM_011491|AK010318|AK046655|NULL
NM_153420|AK083712|AK084605|AK082059|AK043758|BC023960
NM_053108|AK013722|NULL
NM_009754|NM_207680|NM_207681|AK082613|AK011490|NULL
NM_010849|AK087961|X01023
NM_144799|AK075847|NULL
NM_008893|AK020656|AK087989|NULL
NM_026410|AK011701|AK010540|BC052904
NM_009015|AK030753|AK088876|AK048078|AK017340|BC021643
NM_023223
NM_153800|AK046097|AK078218|AK052541|NULL
NM_008652|AK028497|NULL
NM_009387|AK085188|AK087988|NULL
NM_011496|AK075951|BC003261
NM_010110|AK034996|NULL
NM_054077|AK047480|AK037150|NULL
NM_025639|NM_178269
NM_009025|AK053353|NULL
NM_197982|AK011285|NULL
NM_026282|AK075950|AK011728|NULL
NM_010715|2610021G07|BF012073|U19604
XM_132348|AK011489|NULL
NULL|AK049347|NULL
NM_001002929|AK017632|NULL
NM_178111|AK003956|AK079304|BC043086
XM_486227|AK052301|AF467081
XM_283286|AK077509|AK050381|NULL
NM_008681|NM_010884|AK004548|U52073
NM_026412|AK013184|AK036374|AK006328|AK028590|NULL
NM_016692|AK088627|AK081841|NULL
NM_019764|AK040912|AK077535|AF175968

NM_178269|NULL|NULL
NM_178149|AK005141|NULL
NM_013883|AK009416|BC025478
NM_010795|AK081850|BC053040
NM_008247|NM_008903|AK077275|L43371
NM_011514|AK088405|AF019969
NM_010495|AK008264|NULL
NM_026014|AK076527|AK083015|AK049163|AK012041|AK017609|AK028287|AK021216
NM_144808|AK090193|AK122197
NM_145978|2310041E13|4732462F18|BC024556|AA036196
NM_013538|AK011313|AK028159|AK010409|AK008606|BC027172
NULL|AK004614|NULL
NM_029083|AK081046|AK017926|NULL
NULL|NULL|BC052740|BC037471
NM_011121|NULL|L06144
NM_009743|NULL|NULL
NM_013492|NULL|NULL
NM_007570|NULL|NULL
NM_134142|AK049148|BC022997
NM_025391|AK014290|AK003739|NULL
NM_030143|AK029362|AK053333|NULL
NM_008088|AK076926|NULL
NM_177752|AK078516|NULL
NM_009004|AK053280|AK084732|AK051995|AK083697|AK051201|AK083412|NULL
NM_025415|AK077690|AK002451|AK004163|NULL
NM_025928|AK078308|AK013787|AK012113|AK011174|CA321719
NM_008021|AK049177|BC075723
XM_132528|NULL|BC027366
NM_134471|AK088047|BB065339
NM_010705|AK008593|AK089249|AK089470|NULL
NM_028133|AK044787|AK011502|AJ310548
NM_133753|AK004851|BC057646
NM_015756|NULL|AF199421
NM_009940|NULL|AI662919
NM_019959|AK005484|NULL
NM_011113|AK002580|BC010309
NM_020022|XM_489824|AK011353|AK075997|AK011649|2610206M08|BC023028
NM_144850|AK034265|BC020532
NM_180588|AK012301|NULL
NM_025652|AK008247|AK012797|AK017234|AK011845|NULL
NM_011799|AK012192|AK075975|AK085020|BC052434
NM_009372|AK008909|NULL
NM_008563|AK088142|NULL
XM_204030|AK015966|NULL
NM_145409|AK052673|AK077947|NULL
NM_019826|NULL|BC027198
NM_153119|NULL|BC028908
NM_010436|AK088040|BC010336
NM_010831|NULL|U11494
XM_484508|NULL|AK129072
NM_172746|NM_172746|AK045122|BC055687|BC055687
NM_007631|AK017834|AK053348|AK005352|NULL
NULL|AK013062|NULL
NM_178184|NULL|NULL
NULL|NULL|BC068159
NM_019641|AK088251|AK012347|AK030082|AK014108|AK002606|AK012231|AK088628|AK013302|BQ044

XM_126043|AK021267|NULL
NM_011633|NULL|NULL
NM_183091|AK013272|BC066068
NM_133888|AK004242|BC009087
NM_013865|AK037487|AK004689|NULL
NM_011175|NULL|AJ000990
NULL|AK037697|AK031103|AK014494|AK029034|NULL
NM_213616|NULL|AY560895
NM_009773|AK088502|AF107296
NM_053110|AK044764|AK076347|NULL
NM_177775|AK086367|NULL
NM_031405|NULL|BC066831
NM_144899|NULL|AY158701
NULL|AK012530|NULL
NM_010931|NULL|BC022167
NM_009242|AK014286|CB588543
NULL|NULL|BC068159
NM_178199|NULL|NULL
NM_001001326|NM_029811|AK008100|BC051034
XM_486227|AK029828|AK017597|NULL
XM_284543|AK011294|NULL
NM_016769|AK048626|AK083158|NULL
NM_009117|NULL|NULL
NM_010176|NULL|M84145
NM_007744|NULL|BC010402
NM_133859|AK002518|AK076084|NULL
NM_009171|AK010439|BC026055
NM_007532|AK012821|AK013888|AK036309|NULL
NM_022995|AK008976|NULL
NM_146171|AK019259|BC025460
NM_009528|AK087499|NULL
NM_008501|AK042018|NULL
NULL|AK030187|NULL
NM_008181|NULL|CF786775
NM_026580|AK019830|AK008258|AK006346|AK076336|AK006469|AK006054|NULL
XM_130106|AK028183|NULL
NULL|2010004O18|AK014566|AK077299|BE226750|BC015074
NM_007436|NULL|U12785
NM_013733|AK034839|BC053740
NM_008037|AK089371|BC065131
NM_053074|NULL|BC005784
NM_013609|NULL|M35075
NM_153408|AK008501|AF321278
NM_008353|NULL|U23922
NM_011498|AK090032|AK048242|NULL
NM_021274|NULL|BC057150
NM_199221|NULL|BY748526
NM_023117|AK004836|AK043730|NULL
NULL|AK003332|AB041573
NM_144818|AK042706|AK080433|AK045239|AK028919|BC021499
NM_021303|AK078560|AK076287|NULL
NM_026772|AK083004|AK003562|NULL
NM_017402|AK052545|NULL
NM_145495|NULL|BC011277
NM_016662|AK086190|NULL
NM_133777|AK017648|AK017950|NULL

NM_198247|NULL|NULL
NM_009964|NULL|NULL
NM_025549|AK010352|AK010022|AK037198|NULL
NM_011567|NULL|D87966
NM_176963|AK040998|NULL
NM_009878|NULL|BC013898
NM_030697|AK002623|NULL
NM_134024|NULL|BC006581
NM_016904|AK019429|AK004101|AK011314|AK011782|NULL
NM_010884|AK004548|NULL
NM_010235|NULL|BC052917
NM_016925|NULL|AF208116
NM_134084|AK028349|BC004041
NM_025903|AK002702|AK007687|BC037434
NM_007948|AK088271|NULL
NM_133349|NULL|BC058780
NULL|AK036086|NULL
NM_145610|AK085695|AK039027|BC059277
NM_008489|NULL|X99347
NM_028083|AK011243|NULL
NM_199018|NULL|BC062944
NM_028013|AK078056|AK086102|AK079741|AK173036
NM_009178|AK008543|BC050773
NM_009834|AK084516|AK087790|AK041713|U70139
NM_146126|AK004692|AK015059|BC054095
NM_010545|AK020607|AK002232|BC061489
NM_011448|AK049986|NULL
NM_030597|NULL|NULL
NM_009932|NULL|AI425303|J04695
NM_019830|AK088790|AK020120|BC051953
NM_010415|NULL|NULL
NM_016761|NM_053173|NULL|BF537263|AF221102
XM_132261|AK049246|AK012159|AK034588|NULL
NM_013767|NULL|BC026127
NM_008175|AK013678|AK018744|NULL
NULL|AK003780|BC037471
XM_485965|AK035461|AK053973|NULL
NULL|NULL|BC030413
NM_011241|AK042930|AK088768|AK005370|U08110
NM_178732|AK052251|AK054407|AK051488|AK085053|AK044240|NULL
NM_177157|AK028116|AK028122|CB951127
NM_026407|AK017817|NULL
NM_080555|AK076183|AK011276|NULL
NM_009266|NULL|BC028966
NM_173427|AK045732|AK050048|AK052747|NULL
NM_080456|NULL|BG915182
NM_177282|AK030608|NULL
NM_130895|NULL|AF525421
NM_010898|NULL|X74671
NM_201601|AK081810|BG915171
NULL|AK011193|NULL
NM_030261|AK017464|NULL
NM_021288|AK011435|AK035663|AK088134|AK088606|NULL
NM_026506|AK012802|AK011129|AK017852|AK013235|NULL
NM_007999|AK042942|AK046256|AK076977|AK078778|L26320
NULL|NULL|BQ443264

NM_010715|AK053906|U19604|CA321465
NM_146116|AK015901|AK076895|AK002568|BC005547|BG866753
NM_145584|NULL|AK173021
NM_023136|NULL|NULL
NM_011677|NULL|BC011039
NM_021539|NULL|BC055100
NM_178598|NULL|NULL
NM_019581|AK087511|BC049089
NM_009504|AK030339|NULL
XM_131399|NULL|BC058986
NM_027470|AK088512|AK017713|BC048238
NM_178208|NULL|NULL
NM_172950|AK030921|NULL
NM_020590|AK014083|AK018687|AK011975|NULL
NM_010700|NULL|BC053041
NM_008761|AK003068|BC031112
NULL|AK033259|NULL
NM_178185|NULL|AA895993
NM_016661|AK075629|9430016L23|CA752180|L32836
NM_133900|AK088865|NULL
NM_010952|NULL|BC055442
NM_153459|NULL|BC010207
NM_009447|AK002427|AK078355|NULL
NM_133167|NULL|AF237770
NM_144528|AK011369|BC016543
NM_011400|NULL|BC055340
NM_145404|4933402B05|BC057177
NM_008258|AK014212|AK004909|AK013122|AK010057|BQ713501
NULL|AK009640|NULL
NM_024495|AK010166|NULL
NM_009177|AK031344|BC040763
NM_175655|NULL|NULL
NM_026616|AK018776|AK011556|NULL
NM_030127|AK035194|AK008764|NULL
NM_176933|AK080964|AK053746|NULL
NM_008197|AK051213|AK077473|AK090029|NULL
NM_153555|AK035701|NULL
NM_011182|AK036191|BC035296
NM_008768|NULL|NULL
NM_009828|AK044924|NULL
XM_484632|AK033009|NULL
NM_010757|NULL|BC014295
NM_025785|AK018626|NULL
NM_025347|AK002925|AK003371|NULL
NM_008922|AK076095|AK077760|BC019500
NM_030725|AK082425|AK083803|AK077442|AK049840|AK129357
NM_009372|AK008909|2410047L16|NULL
NM_172832|AK050006|BC060677
NM_008126|AK083716|X63099
NM_007564|AK051035|AK036950|AK077855|BC037998
NM_178200|NULL|NULL
NM_023058|AK031787|AF175892
NM_008957|NULL|U46155
NM_029976|AK077515|AB041653
NM_028994|AK031612|AK018642|AK030501|NULL
NM_133662|AK051003|AK003466|X67644

NM_021534|AK003127|AK019381|AK050647|NULL
NM_011594|AK081522|AK032818|NULL
NM_172520|6430573B13|AK053075|NULL
NM_172747|AK075722|AF534881
NM_008788|NULL|X57337
XM_486227|NULL|AF467081
NM_009098|AK010650|NULL
NM_001001806|NM_007565|NULL|BC028330
NM_009238|AK028989|AK053840|BE995439
NM_025866|AK011289|AK028671|AK075882|BE292517|BC066169
NM_011612|AK019885|J04492
NM_016974|NULL|BC064094|BQ931318
NM_019449|AK030488|BC018388
NM_177915|AK030452|NULL
NM_175665|NULL|NULL
NM_025795|AK031135|AK002487|AK085584|AK083981|NULL
NULL|NULL|BC054747
NM_008242|NULL|L38607
NM_008307|AK034102|NULL
NM_009517|AK043009|AF012923
NM_011809|AK005402|AK038001|AK014602|AK030537|BC005486
NM_026268|AK009131|AK005062|AK088468|NULL
NULL|AK029860|NULL
NULL|AK011064|NULL
NM_013807|NULL|BC031180
NM_148952|NULL|BC026649
NM_009410|AK034800|AB006074
NM_133655|NULL|BC011433
NM_178795|AK046696|AK083140|AF502585
NM_019870|AK014469|AK003806|CA450829
NM_009716|AK003001|BC031542
NM_033075|NULL|NULL
NM_010893|AK077444|NULL
NM_178183|NULL|NULL
NM_001004468|NM_021314|NM_206856|NULL|AY177410
NM_025878|AK088540|AK076044|AK076033|AK002554|AK010250|CA323312
NM_016693|NULL|AB021861
NM_011619|AK002340|NULL
XM_284454|AK087491|NULL
NM_175475|AK028272|NULL
NM_010591|NULL|J04115
NM_026252|AK015381|AK021394|AK173229
NM_011633|NULL|BC038645
NM_013790|NULL|AB019003
NM_013642|NULL|BC006967
NM_008894|AK013901|BC003342
NM_152804|NULL|BC035451
NM_019513|NM_181315|AK085670|NULL
NM_146171|AK019259|AK011352|BC025460
NULL|AK011183|NULL
NM_007599|NULL|X54511
NM_007988|AK080374|BC046513
NM_026840|AK004179|NULL
NM_178211|NULL|CA479126
NM_145414|AK079400|BC025592
NM_011923|AK041888|AK037265|NULL

NULL|NULL|BC029209
NULL|AK012232|BC042430
NM_008018|NULL|AJ007012
NM_025578|NULL|AK131114
NM_028106|AK011319|BC016263
NM_134122|2610307M02|NULL
NULL|AK020944|NULL
NM_017464|AK054179|AK083374|AK046357|AK033729|AK030985|NULL
NM_175094|AK047670|AK050433|AK083170|NULL
NM_027567|NM_029955|AK052300|AK014621|AK085701|AK020306|AK082581|NULL
NM_028903|AK084591|BC016096
NULL|AK013888|AK036309|NULL
NM_177683|NULL|NULL
NM_007498|NULL|BC019946
NM_028230|AK051207|AK012355|AK037339|NULL
NM_026654|AK019829|AK014248|AK046576|AK082975|NULL
NM_015816|AK010910|AK089028|BF124724
NM_024469|NULL|NULL
NM_010753|AK007824|NULL
NM_011373|NULL|AJ007310
NULL|AK053704|AK013900|AK081627|NULL
NM_130862|AK049469|BC016411
NM_028800|AK050808|AK009154|AY336057|BU151846
NM_025445|1810004P07|AK075788|AK007732|AK028990|AK002400|NULL
NM_010590|AK012077|BC011035
NM_022019|AK035293|AK088357|AK088186|AK012516|AK088024|AK011995|AK050528|NULL
NM_024289|NULL|AJ278263
NM_009272|AK051101|AK028359|BC005566
NM_172428|AK009756|AK049165|AK028514|NULL
NM_172442|NULL|BC058647
NM_010163|NULL|U72141
NM_019976|AK017302|AK041835|AK011197|BF723196|BC008994
NM_011435|NULL|U38261
NM_024477|AK081382|AK031458|AK122427
XM_358306|AK006128|BC048825
NM_019978|AK032424|AK034632|AF155819
NM_080448|NULL|AK122276
NM_133362|NULL|NULL
NM_009769|AK087066|BC006646
NM_009976|AK013676|AK014368|AK002438|BI080745
NM_011568|AK035721|BI107395
NM_172382|AK054095|AK129187
NM_020004|NULL|BC051952
NM_009668|AK077987|NULL
NM_175256|AK043598|NULL
NM_023731|AK088727|AK036812|AK016771|AK078455|AK078407|NULL
NM_145391|NULL|BC017613
NM_030696|NULL|BC046525
NM_011817|AK002237|AK007410|NULL
NULL|AK007691|AK173059
NM_017373|AK087541|NULL
NM_008949|NULL|NULL
NULL|AK089954|BC058359
NM_145478|AK079623|BX523241|BC017621
NM_010718|AK034900|AB005132
NM_019698|NM_153554|AK013234|BC033427

NM_015804|NULL|BC036322
NM_016920|NULL|NULL
NM_013723|NULL|BC052442
NM_009001|AK005362|AK005307|BC018451
NM_009906|AK048279|AK083832|AK002418|NULL
NM_175103|AK003922|AK028165|AK002662|NULL
NULL|NULL|BC015289
XM_358344|NULL|BC075730
NULL|AK045998|NULL
NM_009462|AK077453|BC007134
NM_015787|NULL|NULL

P-value

0
0
1,11E-16
1,11E-16
3,33E-16
3,33E-16
6,66E-16
1,33E-15
1,89E-15
2,78E-15
1,75E-14
1,83E-14
4,61E-14
4,80E-14
7,02E-14
7,48E-14
8,40E-14
8,79E-14
9,85E-14
9,96E-14
1,07E-13
1,13E-13
1,22E-13
2,12E-13
3,10E-13
4,95E-13
5,50E-13
5,82E-13
6,62E-13
8,50E-13
1,15E-12
1,24E-12
1,26E-12
1,32E-12
1,38E-12
1,46E-12
1,51E-12
1,57E-12
1,64E-12
2,22E-12
2,26E-12
2,67E-12
3,24E-12
3,34E-12
3,40E-12
5,03E-12
6,57E-12
7,60E-12
8,83E-12
8,89E-12
1,10E-11
1,34E-11
1,37E-11

1,64E-11
2,37E-11
2,50E-11
2,55E-11
2,90E-11
3,54E-11
3,60E-11
3,66E-11
3,86E-11
3,88E-11
4,02E-11
4,62E-11
4,95E-11
5,39E-11
5,53E-11
5,83E-11
6,38E-11
6,85E-11
7,12E-11
7,77E-11
9,04E-11
9,98E-11
1,01E-10
1,10E-10
1,19E-10
1,24E-10
1,26E-10
1,34E-10
1,74E-10
2,00E-10
2,06E-10
2,66E-10
3,06E-10
3,11E-10
3,22E-10
3,32E-10
3,43E-10
3,52E-10
3,55E-10
3,82E-10
3,87E-10
4,67E-10
4,73E-10
6,26E-10
6,77E-10
7,33E-10
8,35E-10
8,84E-10
8,93E-10
9,06E-10
9,78E-10
1,01E-09
1,05E-09
1,06E-09
1,07E-09
1,10E-09

1,18E-09
1,19E-09
1,20E-09
1,20E-09
1,23E-09
1,25E-09
1,38E-09
1,58E-09
1,63E-09
1,80E-09
1,82E-09
1,93E-09
1,98E-09
2,05E-09
2,16E-09
2,33E-09
2,33E-09
2,36E-09
2,38E-09
2,41E-09
2,50E-09
2,52E-09
2,53E-09
2,60E-09
2,75E-09
2,79E-09
2,86E-09
2,88E-09
2,88E-09
3,69E-09
3,70E-09
3,77E-09
3,90E-09
4,13E-09
4,21E-09
4,40E-09
4,59E-09
4,64E-09
4,83E-09
4,91E-09
4,95E-09
5,02E-09
5,06E-09
5,09E-09
5,12E-09
5,47E-09
5,57E-09
5,57E-09
5,59E-09
5,66E-09
5,92E-09
6,10E-09
6,43E-09
6,62E-09
6,98E-09
8,02E-09

8,14E-09
8,19E-09
8,59E-09
8,71E-09
9,02E-09
9,03E-09
9,12E-09
9,53E-09
9,82E-09
1,02E-08
1,10E-08
1,17E-08
1,31E-08
1,31E-08
1,34E-08
1,40E-08
1,48E-08
1,57E-08
1,57E-08
1,60E-08
1,61E-08
1,67E-08
1,73E-08
1,82E-08
1,96E-08
1,98E-08
2,01E-08
2,11E-08
2,14E-08
2,17E-08
2,26E-08
2,40E-08
2,44E-08
2,46E-08
2,53E-08
2,53E-08
2,79E-08
2,82E-08
2,87E-08
2,92E-08
3,10E-08
3,15E-08
3,18E-08
3,22E-08
3,26E-08
3,28E-08
3,37E-08
3,55E-08
3,57E-08
3,59E-08
3,61E-08
3,70E-08
3,71E-08
3,83E-08
4,02E-08
4,05E-08

4,24E-08
4,39E-08
4,61E-08
4,74E-08
4,83E-08
4,97E-08
5,01E-08
5,14E-08
5,22E-08
5,41E-08
5,58E-08
5,62E-08
5,68E-08
5,88E-08
5,90E-08
5,94E-08
5,94E-08
6,19E-08
6,44E-08
6,93E-08
6,94E-08
6,95E-08
6,97E-08
6,97E-08
7,16E-08
7,17E-08
7,50E-08
7,68E-08
8,36E-08
8,39E-08
8,45E-08
8,57E-08
8,71E-08
8,79E-08
8,96E-08
8,97E-08
9,47E-08
9,61E-08
1,00E-07
1,11E-07
1,11E-07
1,13E-07
1,14E-07
1,14E-07
1,19E-07
1,21E-07
1,22E-07
1,28E-07
1,35E-07
1,39E-07
1,39E-07
1,40E-07
1,44E-07
1,44E-07
1,44E-07
1,48E-07

1,49E-07
1,50E-07
1,57E-07
1,59E-07
1,62E-07
1,63E-07
1,63E-07
1,68E-07
1,70E-07
1,73E-07
1,80E-07
1,82E-07
1,84E-07
1,85E-07
1,86E-07
1,89E-07
1,98E-07
2,02E-07
2,06E-07
2,10E-07
2,12E-07
2,16E-07
2,18E-07
2,24E-07
2,25E-07
2,26E-07
2,37E-07
2,37E-07
2,47E-07
2,52E-07
2,56E-07
2,58E-07
2,69E-07
2,71E-07
2,83E-07
2,86E-07
2,88E-07
2,88E-07
2,94E-07
2,95E-07
3,09E-07
3,14E-07
3,16E-07
3,26E-07
3,41E-07
3,41E-07
3,48E-07
3,53E-07
3,87E-07
3,87E-07
3,90E-07
3,91E-07
4,09E-07
4,26E-07
4,34E-07
4,36E-07

4,44E-07
4,51E-07
4,67E-07
4,71E-07
4,74E-07
4,98E-07
5,04E-07
5,12E-07
5,14E-07
5,28E-07
5,28E-07
5,32E-07
5,41E-07
5,51E-07
5,51E-07
5,54E-07
5,56E-07
5,61E-07
5,65E-07
5,88E-07
5,89E-07
5,92E-07
5,99E-07
6,02E-07
6,23E-07
6,24E-07
6,42E-07
6,56E-07
6,65E-07
6,69E-07
6,72E-07
6,73E-07
6,75E-07
6,78E-07
6,78E-07
6,80E-07
6,85E-07
6,89E-07
7,02E-07
7,09E-07
7,41E-07
7,44E-07
7,47E-07
7,55E-07
7,61E-07
7,63E-07
7,69E-07
7,74E-07
7,96E-07
8,06E-07
8,30E-07
8,40E-07
8,55E-07
8,69E-07
8,71E-07
8,72E-07

8,80E-07
8,83E-07
8,91E-07
9,06E-07
9,30E-07
9,36E-07
9,51E-07
9,85E-07
9,92E-07
1,00E-06
1,01E-06

Table S4 Functional categories associated with the most significantly altered FGF-8b-regulated genes

Category
Cell Cycle
Cancer
Cellular Growth and Proliferation
Respiratory Disease
Cell Death
Tumor Morphology
Genetic Disorder
Cellular Function and Maintenance
DNA Replication, Recombination, and Repair
Renal and Urological Disease
Hematological System Development and Function
Hematopoiesis
Tissue Morphology
Antigen Presentation
Cell Morphology
Cellular Movement
Immune Cell Trafficking
Inflammatory Response
Connective Tissue Development and Function
Cellular Development
Embryonic Development
Reproductive System Disease
Organismal Development
Gene Expression
Hematological Disease
Organismal Survival
Nervous System Development and Function
Connective Tissue Disorders
Carbohydrate Metabolism
Cardiovascular Disease
Cellular Assembly and Organization
Digestive System Development and Function
Molecular Transport
Neurological Disease
Post-Translational Modification
Respiratory System Development and Function
Skeletal and Muscular Disorders
Tissue Development
Ophthalmic Disease
Immunological Disease
Reproductive System Development and Function
Cell-To-Cell Signaling and Interaction
Organ Morphology
Hair and Skin Development and Function
Developmental Disorder
Dermatological Diseases and Conditions
Endocrine System Disorders
Lipid Metabolism
Renal and Urological System Development and Function
Small Molecule Biochemistry
Hepatic System Development and Function
Organ Development

Visual System Development and Function
Organismal Injury and Abnormalities
Cardiovascular System Development and Function
Skeletal and Muscular System Development and Function
Inflammatory Disease
Infection Mechanism
RNA Damage and Repair
Lymphoid Tissue Structure and Development

P-value

1.79E-14-1.95E-02
5.03E-14-2.16E-02
6.41E-09-2.2E-02
3.46E-08-8.54E-03
5.89E-06-2.16E-02
6.54E-06-1.95E-02
9.19E-06-2.06E-02
1.3E-05-1.83E-02
1.95E-05-2.12E-02
3.11E-05-1.54E-02
6.62E-05-2.2E-02
6.62E-05-1.8E-02
6.62E-05-1.95E-02
6.82E-05-1.95E-02
6.82E-05-1.95E-02
6.82E-05-1.72E-02
6.82E-05-1.72E-02
6.82E-05-1.95E-02
1.55E-04-1.83E-02
1.58E-04-1.96E-02
1.58E-04-1.95E-02
2.1E-04-1.95E-02
2.28E-04-1E-02
2.83E-04-1.54E-02
3.82E-04-2.16E-02
4.85E-04-6.69E-04
4.85E-04-1.95E-02
5.56E-04-1.83E-02
6.08E-04-6.08E-04
6.08E-04-2.12E-02
6.08E-04-1.99E-02
6.08E-04-3.55E-03
6.08E-04-6.08E-04
6.08E-04-2.06E-02
6.08E-04-3.55E-03
6.08E-04-6.08E-04
6.08E-04-1.95E-02
6.08E-04-1.96E-02
7.63E-04-1.88E-03
8.44E-04-2.16E-02
1.38E-03-1.54E-02
1.58E-03-1.83E-02
1.8E-03-1.66E-02
2.13E-03-1.95E-02
2.29E-03-2.06E-02
2.63E-03-2.06E-02
3.53E-03-3.53E-03
3.53E-03-3.53E-03
3.53E-03-4.44E-03
3.53E-03-1.8E-02
3.55E-03-1.95E-02
3.55E-03-2.19E-02

3.55E-03-3.55E-03
5.33E-03-1.95E-02
5.79E-03-5.79E-03
5.79E-03-1.95E-02
6.4E-03-1.43E-02
8.54E-03-8.54E-03
8.54E-03-8.54E-03
8.56E-03-8.56E-03

Supplemental Table 5. Gene set A-C derived by clustering of 592 human orthologs of FGF-8b-regulated genes according to the expression level in 198 breast tumor samples.

<i>Probe set</i>	<i>Gene symbol</i>	<i>Gene name</i>	<i>P-value</i>	<i>Correlation coefficient</i>
<u>Cluster A</u>				
201710_at	MYBL2	v-myb myeloblastosis viral oncogene homolog (avian)-like 2	7.3E-11	0.4438
202094_at	BIRC5	baculoviral IAP repeat-containing 5	5.4E-08	0.3765
202240_at	PLK1	polo-like kinase 1 (Drosophila)	1.4E-13	0.4963
203418_at	CCNA2	cyclin A2	1.1E-11	0.4606
203805_s_at	FANCA	Fanconi anemia, complementation group A	2.0E-07	0.3610
203967_at	CDC6	cell division cycle 6 homolog (S. cerevisiae)	5.7E-08	0.3759
203968_s_at	CDC6	cell division cycle 6 homolog (S. cerevisiae)	8.1E-11	0.4428
204775_at	CHAF1B	chromatin assembly factor 1, subunit B (p60)	2.1E-04	0.2619
209464_at	AURKB	aurora kinase B	3.8E-09	0.4053
209680_s_at	KIFC1	kinesin family member C1	1.0E-07	0.3691
209832_s_at	CDT1	chromatin licensing and DNA replication factor 1	4.5E-09	0.4035
211080_s_at	NEK2	NIMA (never in mitosis gene a)-related kinase 2	1.2E-05	0.3068
213226_at	CCNA2	cyclin A2	2.4E-13	0.4920
218741_at	CENPM	centromere protein M	3.9E-11	0.4495
221436_s_at	CDCA3	cell division cycle associated 3	4.2E-15	0.5221
221520_s_at	CDCA8	cell division cycle associated 8	1.3E-14	0.5139
<u>Cluster B</u>				
202095_s_at	BIRC5	baculoviral IAP repeat-containing 5	7.2E-13	0.4834
202338_at	TK1	thymidine kinase 1, soluble	2.4E-11	0.4538
202705_at	CCNB2	cyclin B2	1.1E-15	0.5313
202870_s_at	CDC20	cell division cycle 20 homolog (S. cerevisiae)	3.8E-15	0.5229
204092_s_at	AURKA	aurora kinase A	>1.0E-16	0.5512
208079_s_at	AURKA	aurora kinase A	>1.0E-16	0.5481
209408_at	KIF2C	kinesin family member 2C	>1.0E-16	0.5562
<u>Cluster C</u>				
203438_at	STC2	stanniocalcin 2	4.3E-08	-0.3789
203439_s_at	STC2	stanniocalcin 2	1.3E-07	-0.3662
204014_at	DUSP4	dual specificity phosphatase 4	2.1E-06	-0.3315
204015_s_at	DUSP4	dual specificity phosphatase 4	2.8E-06	-0.3274