



LUND UNIVERSITY

Autoimmune diseases and hypersensitivities improve the prognosis in ER-negative breast cancer.

Einefors, Rickard; Kogler, Ulrika; Ellberg, Carolina; Olsson, Håkan

Published in:
SpringerPlus

DOI:
[10.1186/2193-1801-2-357](https://doi.org/10.1186/2193-1801-2-357)

2013

[Link to publication](#)

Citation for published version (APA):

Einefors, R., Kogler, U., Ellberg, C., & Olsson, H. (2013). Autoimmune diseases and hypersensitivities improve the prognosis in ER-negative breast cancer. *SpringerPlus*, 2, Article 357. <https://doi.org/10.1186/2193-1801-2-357>

Total number of authors:
4

General rights

Unless other specific re-use rights are stated the following general rights apply:
Copyright and moral rights for the publications made accessible in the public portal are retained by the authors and/or other copyright owners and it is a condition of accessing publications that users recognise and abide by the legal requirements associated with these rights.

- Users may download and print one copy of any publication from the public portal for the purpose of private study or research.
- You may not further distribute the material or use it for any profit-making activity or commercial gain
- You may freely distribute the URL identifying the publication in the public portal

Read more about Creative commons licenses: <https://creativecommons.org/licenses/>

Take down policy

If you believe that this document breaches copyright please contact us providing details, and we will remove access to the work immediately and investigate your claim.

LUND UNIVERSITY

PO Box 117
221 00 Lund
+46 46-222 00 00

RESEARCH

Open Access

Autoimmune diseases and hypersensitivities improve the prognosis in ER-negative breast cancer

Rickard Einefors^{1,2†}, Ulrika Kogler^{1,2†}, Carolina Ellberg^{1,2} and Håkan Olsson^{1,2*}

Abstract

Introduction: Breast cancer (BC) is one of the leading causes of death among women worldwide. Immunostimulatory treatment has increasingly been used as adjuvant therapy in the last few years, in patients with melanoma and other cancer forms, often with an induction of autoimmunity as a consequence of a successful treatment. We aimed at investigating if coexisting autoimmune diseases (AD) or hypersensitivities (HS) similarly to the side effects of immunostimulatory treatment resulted in a better overall survival, compared to patients without these disorders.

Material and methods: The patient material used was a consecutive clinical material consisting of 1705 patients diagnosed with BC between 1980 and 2010 in Sweden. The patients were stratified according to coexisting AD, HS or lack of both. Overall survival was calculated using Kaplan-Meier and the Cox proportional hazard model.

Results: Our main finding was that BC patients with estrogen receptor (ER) negative tumors together with preexisting AD or HS had a statistically significant better overall survival (HR=0.53; 95% CI= 0.30-0.96) compared to patients without. Premenopausal BC patients with a coexistence of AD or HS had a better overall survival, but this was not statistically significant.

Discussion: For patients with premenopausal or ER-negative BC, coexistence with AD or HS was associated with a better overall survival. Although these findings require validation, and the mechanisms responsible need to be found, they hint to possible new treatment strategies for BC, especially for those with ER-negative tumors and potentially for premenopausal patients.

Keywords: Breast cancer; Autoimmune diseases; Hypersensitivities; Immunostimulatory therapy; ER-negative; Premenopausal

Introduction

Immunomodulatory antibodies have been used in phase III trials on metastatic melanoma to enhance anti-tumor immunity. One target protein studied in clinical trials for cancer treatment is Cytotoxic T-Lymphocyte Antigen 4 (CTLA-4). CTLA-4 is expressed on the surface of upregulated T-cells and has an inhibitory effect on T-cell activation. CTLA-4 plays an important role in the induction of tolerance to self-antigens (Sanderson et al. 2005; Attia et al. 2005). A blockade of CTLA-4 enhances anti-tumor immune actions and improves survival in metastatic

malignant melanoma (Sanderson et al. 2005; Attia et al. 2005; Hodi et al. 2010; Simeone & Ascierto 2012). However, administration of this anti-CTLA-4 antibody is a double-edged sword. There is a strong correlation between the induction of tumor regression and grade 3/4 autoimmune toxicity. Another well-studied target protein of this kind is Programmed Death-1 (PD-1). PD-1 is expressed on activated T-cell and has an inhibitory effect on the effector phase of the T-cell response. A blockade of PD-1 has been shown to improve survival in various forms of stage 4 cancers. Adverse effects are mainly immune system related, but not as severe as those observed when using an anti-CTLA-4 antibody (Brahmer et al. 2012; Topalian et al. 2012).

Autoimmunity is the failure of an organism to recognize its own parts as self (Marrack et al. 2001; Atassi &

* Correspondence: hakan.olsson@med.lu.se

†Equal contributors

¹Department of Oncology, Skåne University Hospital Lund, Barngatan 2 B, Lund 221 85, Sweden

²Department of Cancer Epidemiology, Skåne University Hospital Lund, Klinikgatan 22, Lund 221 85, Sweden

Casali 2008). An epidemiological study in Denmark showed that the prevalence of 31 different AD in the population exceeded 5%. Diseases classified as AD in that study by Eaton *et al.* can be seen in Additional file 1: Table S1 (Eaton *et al.* 2007). Other conditions with a dysregulated immune system include asthma and allergies, which are both examples of HS. In both allergies and asthma, T-cell immune and inflammatory pathways are the main participants (Ahmad Al Obaidi *et al.* 2008; Cookson 2004; Kumar & Abbas 2007).

The hyperreactivity of the immune system in AD, allergies and asthma could possibly be beneficial for patients with cancer because of an increased tendency to attack the tumor cells. The mutated cancer cells have an altered protein expression and behavior, which enables the immune system to recognize them as malignant (Weinberg 2007). Hence, our hypothesis was that patients with AD or other HS such as asthma and allergies have a better overall survival rate compared to patients without AD or HS conditions. We decided to investigate this using BC as a model.

Cancer incidence among people with AD or HS has been studied previously, with conflicting results (Vojtechova & Martin 2009; Van Hemelrijck *et al.* 2010; Hwang *et al.* 2012; Hemminki *et al.* 2012; Turesson & Matteson 2012; Landgren *et al.* 2011). Cancer prognosis among the same patients has not been researched to the same extent and they focus mainly in specific diseases (Ji *et al.* 2011). The aim of this study was to investigate if BC patients with coexisting AD or HS have a better overall cancer survival compared to BC patients without these comorbidities.

Material and methods

The study material was a cohort consisting of 1705 patients diagnosed with BC. Part of the patient material has been used in previous studies (Ellberg *et al.* 2012; Ellberg *et al.* 2010; Ellberg & Olsson 2011; Jernstrom *et al.* 1999). All patients were seen by the same physician at the Department of Oncology, Skåne University Hospital, Lund. The area of uptake is population-based and has been estimated to cover 300,000 patients in the southern parts of Sweden (overall population 1.5 million). The period of recruitment spans from Jan 1st 1980 to Dec 31st 2010. All subjects were interviewed through a standardized questionnaire filled out by the physician. This questionnaire contained information about date of birth, comorbidities, BC screening habits, parity, age of menarche, age of menopause, body mass index (BMI), ever-use of hormonal replacement therapy (HRT) and ever-use of oral contraceptive pills (OCP). Tumor stage, ER-status of the tumor and the date of diagnosis were gathered from pathological reports and patients' charts. Follow-up was performed until Jan 1st 2011 using the Swedish Civil Register as source. Informed consent was

collected from all patients and the study was approved by an ethical board in Sweden (No 110–92).

The cohort was split in to three groups based on AD, HS and non-AD/HS. The criteria of inclusion for each group were report of having AD of any kind (y/n) (Additional file 1: Table S1), report of having type 1 HS, eczema or urticaria (y/n) and no report of having AD or HS, respectively. A fourth group (AD-HS) was constructed as well including both AD and HS. Throughout the entire study, the control group to an analyzed patient group was the corresponding counterpart of the cohort.

Any thyroid diseases of unspecified etiology found among recorded comorbidities were handled as follows. Patients with a reported diagnosis of hypothyroidism, hyperthyroidism, thyrotoxicosis or thyroiditis were included into AD. Patients with a reported diagnosis of goiters, levothyroxine use and thyroid surgery were excluded. Diabetes type I was included as an AD in the study. Diagnosed diabetes with the slightest uncertainty of type was classified as type II and hence excluded from the AD group.

ER-status was missing in 580 cases due to the fact that it was not performed in the clinic at the time of diagnosis with the exception of advanced BC. 341 cases were missing information about screening and out of these 315 were premenopausal. An assumption was made that none of these patients underwent screening, mainly due to young age.

We chose to study overall survival with age stratification. Other types of survival as breast cancer specific survival or relative survival were not studied. Two age cut-offs were used; the first at age 65 years old at time of BC diagnosis to reduce the influence on mortality due to comorbidities. The second cut-off was set at 50 years old at time of BC diagnosis to distinguish between pre- and postmenopausal. The median age of menopause in this material was 50 years.

Statistics

All statistical analyses were performed using IBM SPSS 20.0. Overall survival for the AD, HS and AD-HS groups was estimated using Kaplan-Meier. For the AD-HS group the Kaplan-Meier analyses were also performed with stratification based on ER-status and menopausal status. The distribution was tested using the Log-rank test.

Hazard Ratios (HR) were calculated using cox proportional hazard. Both the AD and the HS groups were analyzed separately, adjusted for age at diagnosis of BC only, then adjusted for age at diagnosis of BC and TNM-stage and further with each age cut-off added. The AD-HS group was analyzed with the same adjustments initially and then adjustment for screening as well. The following

variables were used: age at diagnosis of BC (linear), tumor size status (Tis, T1, T2, T3, or T4), and positive node status (N0, N1, N2, or N3), occurrence of distant metastasis (y/n) and screening (y/n).

HR for the AD-HS group was calculated in the subgroups of patients with ER-positive and ER-negative tumors and postmenopausal and premenopausal BC patients. Exclusion criteria included confirmed distant metastasis at diagnosis or carcinoma in situ. Exclusion criteria were set to reduce positive impact on survival in the AD-HS group and due to the low number of metastases. Adjustments were initially made for age at BC diagnosis, secondly age at BC diagnosis and T-stage and N-stage and finally adjustment for screening was added. The following variables were used: age at diagnosis of BC (linear), tumor size status (T1, T2, T3, or T4), and positive node status (N0, N1, N2, or N3) and screening (y/n).

All HR were estimated with 95% confidence intervals (CI). Two-tailed p-values were used for all analyses. A p-value of less than 0.05 was regarded as statistically significant.

Results

Patient material

Out of the 1705 BC patients in this study, 125 (7.3%) had an AD and 72 (4.2%) had HS (Table 1). At time of last follow-up 913 (53.5%) out of all patients were deceased. Median age at diagnosis of BC for the study population was 56.3 years old. Patients with an AD were somewhat older at diagnosis of BC (median 60.6 years) and patients with HS somewhat younger at BC diagnosis (median 53.3 years). A greater part (68.8%) of the BC patients with AD and a lesser part (54.2%) of the BC patients with HS had already entered menopause at time of their BC diagnosis. TNM-stage did not vary greatly between the groups. Similarly, neither BMI, age at menarche, age at menopause, HRT ever-use, nor parity showed any major differences between the groups. OCP ever-use was more common in the HS group (60%) than in the cohort as a whole (40%) (Table 2).

Univariate survival analysis

Overall survival was estimated using Kaplan-Meier. Stratified analyses were made according to ER-status and menopausal status using the AD-HS group. Patients with ER-negative tumors and AD-HS had a statistically significant better overall survival compared to patients without (Figure 1a). ER-positive cases with AD-HS had a non-statistically significant tendency towards better overall survival (Figure 1b). In premenopausal patients we found a non-statistically significant tendency towards better overall survival (Figure 1c). On the contrary, in postmenopausal patients coexistence of AD or HS did

Table 1 Summary of AD and HS diagnoses in the patient material

a)		b)	
Autoimmune disease	No of cases	Hypersensitivity	No of cases
Reumatoid arthritis	28	Asthma	41
Thyreotoxicosis	16	Allergies	27
Hypothyroidism	15	Eczema	3
Psoriasis	12	Urticaria	1
Hyperthyroidism	8		
Ulcerous colitis	8	Total	72
Autoimmune gastritis	6		
Diabetes type 1	4		
Crohn's disease	4		
Polymyalgia reumatica	4		
Thyroiditis	4		
Polyarthritis	3		
Mb Addison	2		
Multiple sclerosis	2		
Sjögrens' disease	2		
Temporal arteritis	2		
Vitiligo	2		
Sacroïdosis	1		
Systemic lupus erythematosus	1		
Wegeners' granulomatosis	1		
Total	125		

not affect the overall survival (Figure 1d). All three groups (AD-HS, AD, HS) analyzed separately had a tendency towards better overall survival, though none of these results were statistically significant (Figure 2).

Multivariate survival analysis

Patients in the ER-negative subgroup with AD or HS had a statistically significant better overall survival compared to patients without, adjusted for age at BC diagnosis, TN-stage and screening (HR 0.53; CI 0.30-0.96) (Table 3a). The study did not show any difference in overall survival in the ER-positive subgroup between patients with AD or HS and patients without, adjusted for age at diagnosis of BC, TN-stage and screening (HR 0.98; CI 0.70-1.37) (Table 3a).

In premenopausal BC patients, AD or HS was associated with a tendency towards better overall survival adjusted for at age at BC diagnosis, TN-stage and screening (HR 0.63; CI 0.38-1.04) (Table 3b). Postmenopausal patients with AD or HS had no tendency towards better or worse overall survival adjusted for age at BC diagnosis, TN-stage and screening (HR 1.02; CI 0.77-1.34) (Table 3b).

Table 2 Patient and tumor characteristics in relation to coexistence of AD or HS

		AD	HS	Non-hypersensitive	All
Number of cases		125	72	1508	1705
Age at diagnosis of BC	Median (range)	60.6 (31.5-80.4)	53.3 (25.4-82.5)	56.1 (23.6-89.5)	56.3 (23.6-89.5)
BMI	Median	24.6	24.1	24.2	24.2
Age at menarche	Median	13.0	13.0	13.5	13.5
Age at menopause	Median	50.0	50.0	50.0	50.0
Deceased	Yes	57 (46%)	30 (42%)	826 (55%)	913 (54%)
T-stage	In situ	4 (3%)	5 (7%)	71 (5%)	80 (5%)
	1	68 (54%)	36 (50%)	744 (49%)	848 (50%)
	2	40 (32%)	23 (32%)	539 (36%)	602 (35%)
	3	9 (7%)	8 (11%)	104 (7%)	121 (7%)
	4	0 (0%)	0 (0%)	7 (1%)	7 (0.4%)
	Unknown	4 (3%)	0 (0%)	43 (3%)	47 (3%)
N-stage	0	54 (43%)	39 (54%)	631 (42%)	724 (43%)
	1	44 (35%)	20 (28%)	514 (34%)	578 (34%)
	2	17 (14%)	8 (11%)	204 (14%)	229 (13%)
	3	5 (4%)	4 (6%)	91 (6%)	100 (6%)
	Unknown	5 (4%)	1 (1%)	68 (5%)	74 (4%)
M-stage	0	117 (94%)	71 (99%)	1349 (90%)	1537 (90%)
	1	1 (1%)	0 (0%)	24 (2%)	25 (2%)
	Unknown	7 (6%)	1 (1%)	135 (9%)	143 (8%)
ER Status	Negative	20 (16%)	17 (24%)	321 (21%)	358 (21%)
	Positive	70 (56%)	33 (46%)	664 (44%)	767 (45%)
	Unknown	35 (28%)	22 (31%)	523 (35%)	580 (34%)
Postmenopausal	No	32 (26%)	31 (43%)	490 (33%)	553 (32%)
	Yes	86 (69%)	39 (54%)	936 (62%)	1061 (62%)
	Unknown	7 (6%)	2 (3%)	82 (5%)	91 (5%)
Screening	No	78 (62%)	31 (43%)	934 (62%)	1043 (61%)
	Yes	29 (23%)	18 (25%)	274 (18%)	321 (19%)
	Unknown	18 (14%)	23 (32%)	300 (20%)	341 (20%)
OCP ever-use	Yes	50 (40%)	42 (58%)	625 (41%)	717 (42%)
HRT ever-use	Yes	31 (25%)	12 (17%)	277 (18%)	320 (19%)
Parity	0	28 (22%)	15 (21%)	250 (17%)	293 (17%)
	1	20 (16%)	15 (21%)	284 (19%)	319 (19%)
	2	56 (45%)	23 (32%)	579 (38%)	658 (39%)
	3	18 (14%)	10 (14%)	280 (19%)	308 (18%)
	4 +	3 (2%)	9 (13%)	115 (8%)	127 (7%)

Among all patients diagnosed with BC, those with coexisting AD or HS had a non-statistically significant tendency towards better overall survival adjusted for age at diagnosis of BC (HR 0.88; CI 0.71-1.10). Adding adjustment for TNM-stage as well, a better overall survival effect remained but not statistically significant (HR 0.91; CI 0.72-1.14). Additional adjustment for screening showed

a non-statistically significant tendency towards better overall survival (HR 0.95; CI 0.74-1.23). Including only patients younger than 50 years old at BC diagnosis in the analysis the AD-HS group had a tendency towards a better overall survival (HR 0.74; CI 0.48-1.16) (Table 4a).

Both the AD and HS groups had a tendency towards better overall survival when they were analyzed separately

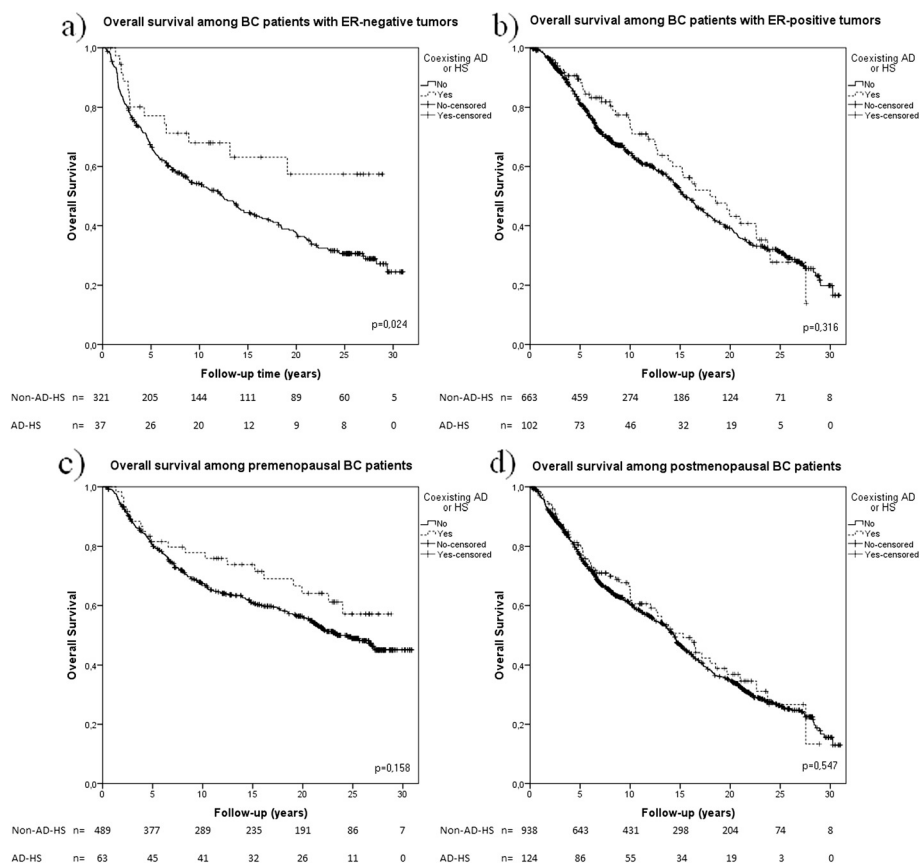


Figure 1 Survival analysis in BC patients with coexistence of AD or HS stratified based on ER- and menopausal status. Kaplan-Meier analysis on the coexistence of AD or HS stratified based on ER- and menopausal status in; **a)** patients with ER-negative tumors (dotted line) (N=36), **b)** patients with ER-positive tumors (dotted line) (N=96), **c)** premenopausal patients (dotted line) (N=56), and **d)** postmenopausal patients (dotted line) (N=117) compared to BC patients without (whole line). Log-rank tests were performed individually for each Kaplan-Meier analysis and are presented in each diagram respectively.

(Table 4b, 4c). None of these results were statistically significant.

Discussion

Our aim was to investigate if AD or HS constitute protective factors for overall survival among BC patients. This study showed a statistically significant overall survival benefit for patients diagnosed with an ER-negative BC if they had a concurrent diagnosis of an AD or a HS. Premenopausal BC patients with AD or HS had an overall survival advantage compared to those without these comorbidities.

This raises the question of the mechanism behind the better overall survival for patients with co-existing AD or HS. As mentioned in the introduction, successful immunostimulatory therapy is often associated with the development of an AD. Since the mutated cancer cells have developed host immune evasion strategies, an over-active immune system that reacts to self-antigens may

discover and target cancer cells more readily. From our study, these benefits were more evident in young patients and in those ER-negative BC, but were less clear for other patients.

In most analyses, the difference between the groups was weakened when adjusted for tumor size, lymph node involvement and distant metastases. A possible explanation for this might be that patients with AD or HS had less advanced tumors at time of diagnosis and/or an effect of exclusion of patients with missing information. It might also be that coexistence of AD or HS retards or inhibits tumor progression. Another possible reason is that patients with AD or HS have closer and more regular contact with medical health care and therefore the tumors are found at an earlier stage. Lower mortality observed among patients with AD or HS may also represent the effect of a generalized increase in health awareness.

ER-negative BC patients with AD or HS still exhibited significant overall survival differences even after adjusting

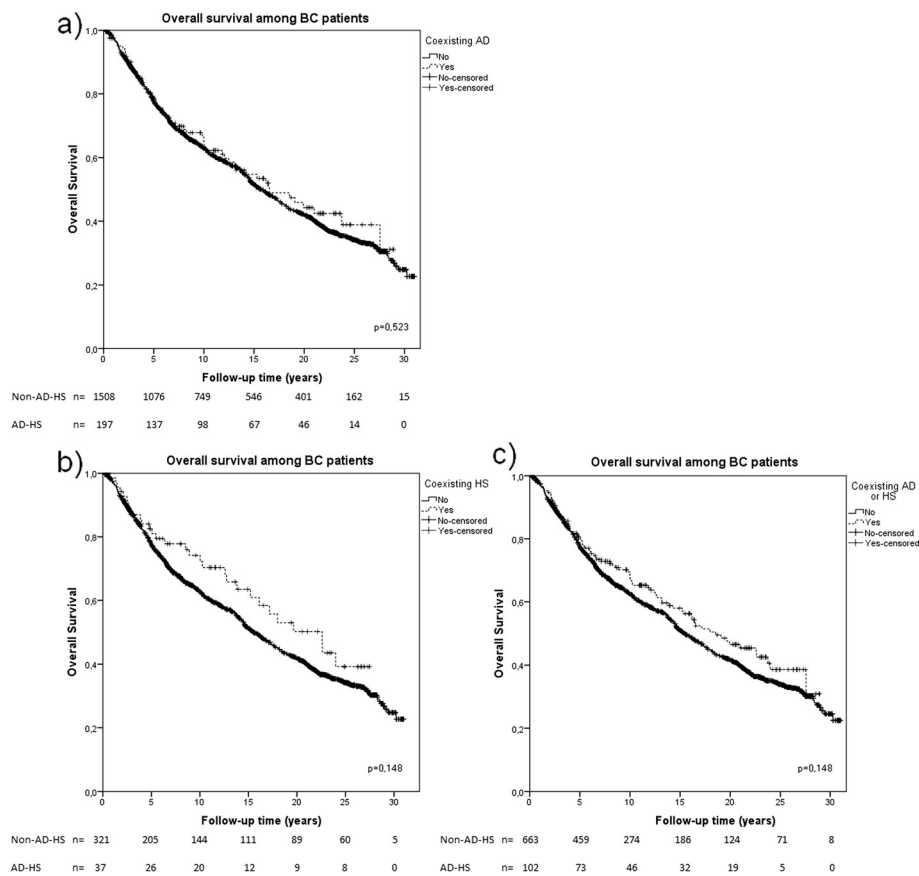


Figure 2 Survival analysis in BC patients with coexistence of AD or HS. Kaplan-Meier analysis on the coexistence of AD or HS in; **a)** patients with AD or HS (dotted line) (N=197), **b)** patients with AD (N=125) (dotted line), and **c)** patients with HS (dotted line) (N=72) compared to BC patients without (whole line). Log-rank tests were performed individually for each Kaplan-Meier analysis and are presented in each diagram respectively.

for tumor size and lymph node involvement. Furthermore, adjustment for BC screening was made, since BC found through screening has a better prognosis due to earlier detection (Nystrom *et al.* 2002). Among patients with ER-negative tumors, screening detection did not weaken the result. This indicates that TN-stage and screening detection probably do not influence the longer overall survival for patients with ER-negative tumors and coexisting HS or AD.

Why AD and HS is associated with a better overall survival specifically among the ER-negative BC patients is not known. Compared to ER-positive tumors, the ER-negative are associated with a poorer prognosis, fewer treatment strategies and in generally, a worse tumor grade and hence a more aggressive biological behavior (Putti *et al.* 2005). Considering the results from our study, there seems to be a protective effect from AD or HS which possibly contributes to decrease the tumor progression. In a recent study by Calabro *et al.*, it is indicated that lymphocyte infiltrate (LI) is associated with

survival, but it has opposite effects in ER-positive compared to ER-negative BC patients. A high LI of ER-positive BC patients was associated with a worse prognosis. However, a high LI in ER-negative BC patients was associated with a better overall survival for these patients. LI occurs as a reaction of the organism to the growing tumor mass. Further, Calabro *et al.*, suggest, that the results might reflect intrinsic differences in the biology of the breast-tumor subtypes and also a difference in tumor immune surveillance. ER-status seems to be important for this differentiation (Calabro *et al.* 2009). This finding points in a similar direction as our result for the ER-negative BC patients, in which they both suggest a specific molecular mechanism through which the immune system effectively inhibits growth of ER-negative tumors. Our suggestion is that LI is higher in AD or HS patients, compared with patients without these conditions. Given that our theory is true, another conceivable explanation for our result could therefore be that an ER-negative BC with a high LI, perhaps caused by an AD or HS, after

Table 3 Cox proportional hazard stratified based on a) ER-status, and b) menopausal status relating BC patients with coexisting AD-HS to BC patients without

a) Number of patients included in the analysis N=332 and N=695, respectively

	Patients with ER-negative tumors				Patients with ER-positive tumors			
	HR	95% CI for HR		p-value	HR	95% CI for HR		p-value
		Lower	Upper			Lower	Upper	
AD-HS	0.53	0.30	0.96	0.036	0.98	0.70	1.37	0.909
T1	1.00	Ref	Ref		1.00	Ref	Ref	
T2	1.30	0.95	1.77	0.097	1.60	1.26	2.03	<0.001
T3	2.62	1.69	4.08	<0.001	1.97	1.33	2.91	0.001
T4	3.86	0.91	16.42	0.067	-	-	-	-
N0	1.00	Ref	Ref		1.00	Ref	Ref	
N1	1.63	1.17	2.27	0.004	1.28	1.00	1.64	0.054
N2	2.29	1.51	3.49	<0.001	1.38	0.98	1.93	0.064
N3	2.72	1.54	4.81	0.001	2.61	1.68	4.06	<0.001
Screening	0.59	0.27	1.26	0.174	0.75	0.51	1.11	0.149

b) Number of patients included in the analysis N=499 and N=959, respectively

	Premenopausal BC patients				Postmenopausal BC patients			
	HR	95% CI for HR		p-value	HR	95% CI for HR		p-value
		Lower	Upper			Lower	Upper	
AD-HS	0.63	0.38	1.04	0.073	1.02	0.77	1.34	0.898
T1	1.00	Ref	Ref		1.00	Ref	Ref	
T2	1.22	0.91	1.65	0.190	1.48	1.23	1.78	<0.001
T3	3.29	2.16	5.01	<0.001	1.73	1.25	2.39	0.001
T4	-	-	-	-	1.68	0.53	5.31	0.377
N0	1.00	Ref	Ref		1.00	Ref	Ref	
N1	1.54	1.11	2.13	0.009	1.58	1.28	1.95	<0.001
N2	2.72	1.85	4.00	<0.001	1.84	1.43	2.39	<0.001
N3	3.63	2.07	6.36	<0.001	2.95	2.15	4.05	<0.001
Screening	0.66	0.29	1.50	0.319	0.76	0.59	0.97	0.030

Both models are adjusted for age at BC diagnosis, T- and N-status of the tumor, and screening simultaneously. T1 and N0 were reference values for respective category.

given therapy more efficiently attacks the tumor cells, than an ER-negative tumor with a low LI. For the ER-negative tumors, where no satisfactory treatment is available, the LI serves as an important supplement defense line for the body.

Possible bias

The patients reported occurrence of AD or HS to the treating doctor during the interview at time of BC diagnosis. There might be some BC patients that omitted to report or forgot anything of importance for our study.

Additionally, it is impossible to know whether there was a selection bias in the group of patients that perhaps did not report. In some instances, other data, such as ER-status, occurrence of metastases, lymph node involvement etc. was missing due to clinical practice at the time of diagnosis.

ER-status was missing in 34% of all patients (Table 2). Most missing data was from the patients diagnosed earlier than the mid-nineties, which was before determination of ER-status was a part of regular clinical practice. Because the grade of selection is low, this bias factor should not be too worrying for our result. The patients diagnosed at the time when ER-status was brought in to clinical practice can show a selection bias though. At the start phase, it is possible that ER-status was taken only on some specially prioritized patients, for example those with large and aggressively growing tumors or those with hereditary BC.

The definition of an AD is somewhat fluctuating which is an issue for discussion. We mainly utilized the Danish definition from an extensive epidemiological study in 2007 (Additional file 1: Table S1). This choice of definition could have meant that some of the diseases are misclassified. But it should be remembered that this is an exploratory study, which means that our results could be due to chance and they need to be validated in an independent material.

Diabetes and diseases of the thyroid that did not meet certain criteria as described in *Materials and Methods*, were excluded from AD. Therefore, diabetes and thyroid issues with autoimmune etiology might have been incorrectly included and excluded. However, this would only have weakened our result, which might mean that a stronger effect exists in reality.

Patients in the southern health care region in Sweden with BC that need radio- and/or chemotherapy are referred to the Department of Oncology, Skåne University Hospital, Lund. However, the region has been changing slightly during the 1980s and 1990s, but this should not influence our results significantly. Patients who were not treated with radio- and/or chemotherapy or who were too old and weak to receive this treatment and those whose cancer was too advanced were not remitted to the Department of Oncology, Skåne University Hospital, Lund. This means, that the median age is slightly younger in our material than that of BC patients in general. In the end, the low median age entails in a result that is not completely generalizable on all BC patients. In our study, data collection and treatment of patients, stretches over a long time span (1980–2010). During this period of time, criteria for diagnosis and available treatments have varied, chiefly for BC, but also for AD, which is another reason why these results needs to be validated in an independent material.

Table 4 Cox proportional hazard relating coexistence of a) AD-HS, b) AD, and c) HS to overall survival compared to BC patients without these comorbidities

a) BC patients with coexisting AD or HS

AD-HS, adjusted for:	All patients. N=1508, N=1363 and N=1363.									
	N	HR	95% CI for HR		p-value					
			Lower	Upper						
Age at diagnosis	194	0.88	0.71	1.10	0.25					
Age at diagnosis, TNM-stage	185	0.91	0.72	1.14	0.409					
Age at diagnosis, TNM-stage, Screening	185	0.94	0.75	1.18	0.579					
AD-HS, adjusted for:	Patients younger than 65 years at diagnosis of BC. N=1021					Patients younger than 50 years at diagnosis of BC. N=473				
	N	HR	95% CI for HR		p-value	N	HR	95% CI for HR		p-value
			Lower	Upper				Lower	Upper	
Age at diagnosis, TNM-stage	130	0.94	0.75	1.18	0.579	56	0.74	0.48	1.16	0.186

b) BC patients with coexisting AD

AD adjusted for:	All patients. N=1580 and N=1433									
	N	HR	95% CI for HR		p-value					
			Lower	Upper						
Age at diagnosis	122	0.90	0.48	1.16	0.460					
Age at diagnosis, TNM-stage	115	0.90	0.69	1.20	0.480					
AD adjusted for:	Patients younger than 65 years at diagnosis of BC. N=1071					Patients younger than 50 years at diagnosis of BC. N=500				
	N	HR	95% CI for HR		p-value	N	HR	95% CI for HR		p-value
			Lower	Upper				Lower	Upper	
Age at diagnosis, TNM-stage	80	0.95	0.66	1.36	0.773	29	0.81	0.45	1.45	0.472

c) BC patients with coexisting HS

HS adjusted for:	All patients included. N= 1632 and N=1363									
	N	HR	95% CI for HR		p-value					
			Lower	Upper						
Age at diagnosis	72	0.85	0.60	1.23	0.388					
Age at diagnosis, TNM-stage	70	0.93	0.64	1.34	0.691					
HS adjusted for:	Patients younger than 65 years at diagnosis of BC. N=1101					Patients younger than 50 years at diagnosis of BC. N=502				
	N	HR	95% CI for HR		p-value	N	HR	95% CI for HR		p-value
			Lower	Upper				Lower	Upper	
Age at diagnosis, TNM-stage	50	0.86	0.54	1.37	0.524	27	0.69	0.36	1.33	0.269

The HR shown is for a) AD-HS combined, b) AD, or c) HS adjusted for the variables in the left column. All analyses were performed using all patients, with an age cutoff at less than 65 years old, and an age cutoff at less than 50 years old for each group respectively.

Conclusion

Patients with ER-negative BC had a statistically significant better overall survival when they had a history of AD or a HS. The overall survival was better among premenopausal patients with AD or HS compared to patients without AD or HS. These findings need to be validated in an independent material. If an over-activated immune system that accompanies a coexisting AD or

HS gives a longer survival for BC patients, an immune activation is a possible future target for treatment, especially for patients with ER negative tumors and for young patients.

Ethical standards

This study has been approved by an ethical board and complies with the current laws of Sweden.

Additional file

Additional file 1: Table S1. Diseases generally considered as autoimmune: thyrotoxicosis, Autoimmune thyroiditis, Insulin dependent diabetes, Primary adrenocortical insufficiency, Celiac disease, Pernicious anemia, Autoimmune hemolytic anemia, Idiopathic thrombocytopenic purpura, Multiple sclerosis, Guillain Barre syndrome, Iridocyclitis, Wegener's granulomatosis, Crohn's disease, Ulcerative colitis, Primary biliary cirrhosis, Chronic hepatitis, Interstitial cystitis, Endometriosis, Pemphigoid, Pemphigus, Psoriasis vulgaris, Alopecia areata, Vitiligo, Seropositive rheumatoid arthritis, Dermatopolymyositis, Myositis, Polymyalgia rheumatica, Myasthenia gravis, Systemic sclerosis, Systemic lupus erythematosus, Sjogren's syndrome.

Abbreviations

AD: Autoimmune diseases; BC: Breast cancer; BMI: Body mass index; CI: Confidence interval; CTLA-4: Cytotoxic T-Lymphocyte Antigen 4; ER: Estrogen receptor; HR: Hazard ratio; HRT: Hormonal replacement therapy; HS: Hypersensitivities; LI: Lymphocyte infiltration; OCP: Oral contraceptive pills.

Competing interest

The authors declare that they have no conflict of interest.

Authors' contributions

RE participated in the design of the study, assembled and analysed the patient material, and wrote the manuscript. UK participated in the design of the study, assembled and analysed the patient material, and wrote the manuscript. CE took part in the analyses and interpretation of the results and writing of the manuscript. HO interviewed all patients, designed the study, took part in analyses and writing of the manuscript. All authors have approved the final manuscript.

Acknowledgements

Research support from: Swedish Cancer Society, Swedish Medical Research Council, Local funds in Region Skåne and at the Skåne University Hospital. Also acknowledging the support of European Research Council Advanced Grant ERC 2011–294576.

Received: 2 July 2013 Accepted: 3 July 2013

Published: 30 July 2013

References

- Ahmad AI, Obaidi AH, Mohamed AI, Samarai AG, Yahya AI, Samarai AK, Al Janabi JM (2008) The predictive value of IgE as biomarker in asthma. *J Asthma* 45(8):654–663. doi:10.1080/02770900802126958
- Atassi MZ, Casali P (2008) Molecular mechanisms of autoimmunity. *Autoimmunity* 41(2):123–132. doi:10.1080/08916930801929021
- Attia P, Phan GQ, Maker AV, Robinson MR, Quezado MM, Yang JC, Sherry RM, Topalian SL, Kammula US, Royal RE, Restifo NP, Haworth LR, Levy C, Mavroukakis SA, Nichol G, Yellin MJ, Rosenberg SA (2005) Autoimmunity correlates with tumor regression in patients with metastatic melanoma treated with anti-cytotoxic T-lymphocyte antigen-4. *J Clin Oncol* 23(25):6043–6053. doi:10.1200/JCO.2005.06.205
- Brahmer JR, Tykodi SS, Chow LQ, Hwu WJ, Topalian SL, Hwu P, Drake CG, Camacho LH, Kauh J, Odunsi K, Pitot HC, Hamid O, Bhatia S, Martins R, Eaton K, Chen S, Salay TM, Alaparthi S, Grosso JF, Korman AJ, Parker SM, Agrawal S, Goldberg SM, Pardoll DM, Gupta A, Wigginton JM (2012) Safety and Activity of Anti-PD-L1 Antibody in Patients with Advanced Cancer. *N Engl J Med*. doi:10.1056/NEJMoa1200694
- Calabro A, Beissbarth T, Kuner R, Stojanov M, Benner A, Asslaber M, Ploner F, Zatloukal K, Samonigg H, Poustka A, Sultmann H (2009) Effects of infiltrating lymphocytes and estrogen receptor on gene expression and prognosis in breast cancer. *Breast Cancer Res Treat* 116(1):69–77. doi:10.1007/s10549-008-0105-3
- Cookson W (2004) The immunogenetics of asthma and eczema: a new focus on the epithelium. *Nat Rev Immunol* 4(12):978–988. doi:10.1038/nri1500
- Eaton WW, Rose NR, Kalaydjian A, Pedersen MG, Mortensen PB (2007) Epidemiology of autoimmune diseases in Denmark. *J Autoimmun* 29(1):1–9. doi:10.1016/j.jaut.2007.05.002
- Ellberg C, Olsson H (2011) Breast cancer patients with lobular cancer more commonly have a father than a mother diagnosed with cancer. *BMC Cancer* 11:497. doi:10.1186/1471-2407-11-497
- Ellberg C, Jonsson G, Olsson H (2010) Can a phenotype for recessive inheritance in breast cancer be defined? *Fam Cancer* 9(4):525–530. doi:10.1007/s10689-010-9355-4
- Ellberg C, Jernstrom H, Olsson H (2012) Breast cancer and spider telangiectasias at diagnosis and its relation to histopathology and prognosis: a population-based study. *Breast Cancer Res Treat* 131(1):177–186. doi:10.1007/s10549-011-1707-8
- Hemminki K, Liu X, Ji J, Forsti A, Sundquist J, Sundquist K (2012) Effect of autoimmune diseases on risk and survival in female cancers. *Gynecol Oncol*. doi:10.1016/j.ygyno.2012.07.100
- Hodi FS, O'Day SJ, McDermott DF, Weber RW, Sosman JA, Haanen JB, Gonzalez R, Robert C, Schadendorf D, Hassel JC, Akerley W, van den Eertwegh AJ, Lutzky J, Lorigan P, Vaubel JM, Linette GP, Hogg D, Ottensmeier CH, Lebba C, Peschel C, Quirt I, Clark JI, Wolchok JD, Weber JS, Tian J, Yellin MJ, Nichol GM, Hoos A, Urbaniak WJ (2010) Improved survival with ipilimumab in patients with metastatic melanoma. *N Engl J Med* 363(8):711–723. doi:10.1056/NEJMoa1003466
- Hwang CY, Chen YJ, Lin MW, Chen TJ, Chu SY, Chen CC, Lee DD, Chang YT, Wang WJ, Liu HN (2012) Cancer risk in patients with allergic rhinitis, asthma and atopic dermatitis: a nationwide cohort study in Taiwan. *Int J Cancer* 130(5):1160–1167. doi:10.1002/ijc.26105
- Jernstrom H, Frenander J, Ferno M, Olsson H (1999) Hormone replacement therapy before breast cancer diagnosis significantly reduces the overall death rate compared with never-use among 984 breast cancer patients. *Br J Cancer* 80(9):1453–1458. doi:10.1038/sj.bjc.6690543
- Ji J, Liu X, Sundquist K, Sundquist J (2011) Survival of cancer in patients with rheumatoid arthritis: a follow-up study in Sweden of patients hospitalized with rheumatoid arthritis 1 year before diagnosis of cancer. *Rheumatology* 50(8):1513–1518. doi:10.1093/rheumatology/ker143
- Kumar V, Abbas A (ed) (2007) Robbins Basic Pathology, 8th edition. Saunders/Elsevier, Philadelphia, PA
- Landgren AM, Landgren O, Gridley G, Dores GM, Linet MS, Morton LM (2011) Autoimmune disease and subsequent risk of developing alimentary tract cancers among 4.5 million US male veterans. *Cancer* 117(6):1163–1171. doi:10.1002/cncr.25524
- Marrack P, Kappler J, Kotzin BL (2001) Autoimmune disease: why and where it occurs. *Nat Med* 7(8):899–905. doi:10.1038/90935
- Nystrom L, Andersson I, Bjurstam N, Frisell J, Nordenskjold B, Rutqvist LE (2002) Long-term effects of mammography screening: updated overview of the Swedish randomised trials. *Lancet* 359(9310):909–919. doi:10.1016/S0140-6736(02)08020-0
- Putti TC, El-Rehim DM, Rakha EA, Paish CE, Lee AH, Pinder SE, Ellis IO (2005) Estrogen receptor-negative breast carcinomas: a review of morphology and immunophenotypical analysis. *Mod Pathol* 18(1):26–35. doi:10.1038/modpathol.3800255
- Sanderson K, Scotland R, Lee P, Liu D, Groshen S, Snively J, Sian S, Nichol G, Davis T, Keler T, Yellin M, Weber J (2005) Autoimmunity in a phase I trial of a fully human anti-cytotoxic T-lymphocyte antigen-4 monoclonal antibody with multiple melanoma peptides and Montanide ISA 51 for patients with resected stages III and IV melanoma. *J Clin Oncol* 23(4):741–750. doi:10.1200/JCO.2005.01.128
- Simeone E, Ascierto PA (2012) Immunomodulating antibodies in the treatment of metastatic melanoma: The experience with anti-CTLA-4, anti-CD137, and anti-PD1. *J Immunotoxicol*. doi:10.3109/1547691X.2012.678021
- Topalian SL, Hodi FS, Brahmer JR, Gettinger SN, Smith DC, McDermott DF, Powderly JD, Carvajal RD, Sosman JA, Atkins MB, Leming PD, Spigel DR, Antonia SJ, Horn L, Drake CG, Pardoll DM, Chen L, Sharrman WH, Anders RA, Taube JM, McMiller TL, Xu H, Korman AJ, Jure-Kunkel M, Agrawal S, McDonald D, Kollia GD, Gupta A, Wigginton JM, Sznol M (2012) Safety, activity, and immune correlates of Anti-PD-1 antibody in cancer. *N Engl J Med*. doi:10.1056/NEJMoa1200690
- Turesson C, Matteson EL (2012) Malignancy as a comorbidity in rheumatic diseases. *Rheumatology*. doi:10.1093/rheumatology/kes189
- Van Hemelrijck M, Garmo H, Binda E, Hayday A, Karagiannis SN, Hammar N, Walldius G, Lambe M, Jungner I, Holmberg L (2010)

Immunoglobulin E and cancer: a meta-analysis and a large Swedish cohort study. *Cancer causes & control*: CCC 21(10):1657–1667.
doi:10.1007/s10552-010-9594-6

Vojtechova P, Martin RM (2009) The association of atopic diseases with breast, prostate, and colorectal cancers: a meta-analysis. *Cancer causes & control*: CCC 20(7):1091–1105. doi:10.1007/s10552-009-9334-y

Weinberg RA (ed) (2007) *The biology of cancer*. Garland Scienc, Taylor and Francis Group, LLC

doi:10.1186/2193-1801-2-357

Cite this article as: Einefors *et al.*: Autoimmune diseases and hypersensitivities improve the prognosis in ER-negative breast cancer. *SpringerPlus* 2013 **2**:357.

Submit your manuscript to a SpringerOpen[®] journal and benefit from:

- ▶ Convenient online submission
- ▶ Rigorous peer review
- ▶ Immediate publication on acceptance
- ▶ Open access: articles freely available online
- ▶ High visibility within the field
- ▶ Retaining the copyright to your article

Submit your next manuscript at ▶ springeropen.com
