



# LUND UNIVERSITY

## Cardiomyocyte Cell Cycle, Renewal and Isolation

Walsh, Stuart

2010

[Link to publication](#)

*Citation for published version (APA):*

Walsh, S. (2010). *Cardiomyocyte Cell Cycle, Renewal and Isolation*. [Doctoral Thesis (compilation), Stem Cell Center]. Cardiovascular Laboratory, Center for Stem Cell Biology, Lund.

*Total number of authors:*

1

### General rights

Unless other specific re-use rights are stated the following general rights apply:

Copyright and moral rights for the publications made accessible in the public portal are retained by the authors and/or other copyright owners and it is a condition of accessing publications that users recognise and abide by the legal requirements associated with these rights.

- Users may download and print one copy of any publication from the public portal for the purpose of private study or research.
- You may not further distribute the material or use it for any profit-making activity or commercial gain
- You may freely distribute the URL identifying the publication in the public portal

Read more about Creative commons licenses: <https://creativecommons.org/licenses/>

### Take down policy

If you believe that this document breaches copyright please contact us providing details, and we will remove access to the work immediately and investigate your claim.

LUND UNIVERSITY

PO Box 117  
221 00 Lund  
+46 46-222 00 00

Doctoral Dissertation

# Cardiomyocyte Cell Cycle, Renewal and Isolation

**Stuart Walsh**

Cardiovascular Laboratory,  
Lund Strategic Research Center for Stem Cell Biology and Cell Therapy,  
Faculty of Medicine, Lund University

With the approval of Lund University Faculty of Medicine, this thesis will be defended  
on April 23 2010 at 14.00 in the Segerfalk lecture hall, BMC A10, Lund.

Faculty opponent: Sean M. Wu, M.D. Ph.D.  
Cardiovascular Research Center,  
Massachusetts General Hospital (MGH), Boston, USA



**LUND UNIVERSITY**

2010

© 2010 Stuart Walsh  
Cardiomyocyte Cell Cycle, Renewal and Isolation  
Cover: Design by Stuart Walsh  
Printed in Sweden  
Media Tryck AB, Lund 2010  
ISSN: 1652-8220  
ISBN: 978-91-86443-59-7  
Lund University, Faculty of Medicine Doctoral Dissertation Series 2010:44

# Table of Contents

<b>Articles and Manuscripts Included In this Thesis</b>	<b>6</b>
<b>Abbreviations</b>	<b>7</b>
<b>Introduction</b>	<b>8</b>
<b>Cardiogenesis</b>	<b>8</b>
Overview of cardiac origins and early morphogenesis	8
Early cardiogenesis	9
Specification of cardiac mesoderm	10
Determination of bilateral heart field formation	12
Heart tube formation and looping	14
Chamber formation	15
Development of cardiac function and conductive system	16
Cardiomyocyte growth patterns	16
<b>Cell Cycle</b>	<b>17</b>
G1/G0 checkpoint	18
S-Phase checkpoint	18
G2/M checkpoint	19
<b>Cardiomyocyte cell cycle control mechanisms</b>	<b>19</b>
Embryonic cardiomyocytes	19
Neonatal period and binucleation	20
Adult cardiomyocytes and cell cycle withdrawal	21
<b>Cardiac disease and therapy</b>	<b>22</b>
Myocardial infarction and loss of function	22
Cardiac regeneration	23
<b>Cell based repair</b>	<b>23</b>
Bone marrow transplantation	23
Embryonic stem cells	24
Skeletal myoblasts	24
Mesenchymal stem cells	24
Paracrine effects	25
Resident myocardial progenitors	25
<b>Models and Methods</b>	<b>27</b>
FACS	27
Validation	27
Heart tissue	28
AMS	28
Mouse Model	28
Cell cycle analysis	28

<b>Specific aims of the studies</b>	<b>29</b>	
<b>Summary and discussion of the articles</b>	<b>30</b>	
Paper I	Cardiomyocyte cell cycle control and growth estimation in vivo– an analysis based on cardiomyocyte nuclei	30
Paper II	Evidence for cardiomyocyte renewal in humans	33
Paper III	Surface marker based purification of mouse embryonic cardiomyocytes and culture <i>in vivo</i>	36
Paper IV	Identification of cardiomyocyte and progenitor populations with cell surface markers: a comparison of fetal, neonatal and adult cardiomyocytes	39
<b>Sammanfattning på Svenska</b>	<b>43</b>	
<b>Achoimre Gaeilge</b>	<b>44</b>	
<b>Articles Not Included in this Thesis</b>	<b>45</b>	
<b>Acknowledgments</b>	<b>46</b>	
<b>References</b>	<b>47</b>	
<b>Appendix</b>	<b>60</b>	
Paper I		
Paper II		
Paperr III		
Paper IV		

## Articles and manuscripts included in this thesis

---

This thesis is based on the following articles, referred to in the text by their roman numerals.

- I. **Walsh S**, Pontén A, Fleischmann B.K, Jovinge S. Cardiomyocyte cell cycle control and growth estimation in vivo– an analysis based on cardiomyocyte nuclei. 2009. Cardiovascular Research in press 2010.
- II. Bergmann O, Bhardwaj R.D, Bernard S, Zdunek S, Barnabé-Heider F, **Walsh S**, Zupicich J, Alkass K,. Buchholz B.A, Druid H, Jovinge S, Frisén J. Evidence for Cardiomyocyte Renewal in Humans. Science 3 April 2009: Vol. 324. no. 5923, pp. 98 – 102
- III. Pontén A, **Walsh S**, Malan D, Schéele S, Fleischmann B.K and Jovinge S. Fetal cardiomyocytes are VCAM-1+ CD31- and thus can be isolated by FACS with high purity and cultured in vitro. 2009. Submitted.
- IV. **Walsh S**, Pontén A, Fleischmann B.K, Jovinge S. Identification of cardiomyocyte and progenitor populations with cell surface markers: a comparison of fetal, neonatal and adult cardiomyocytes. Manuscript in preparation.

Published articles are reproduced with permission from Oxford University Press (Paper I) and Highwire Press (paper II).

## Abbreviations

---

<b>7-AAD</b>	7-amino actinomyosin
<b><math>\alpha</math>-MHC</b>	alpha myosin heavy chain
<b><math>\beta</math>-actin</b>	beta-actin
<b><math>\beta</math>-MHC</b>	beta-myosin heavy chain
<b>BMP</b>	Bone morphogenic protein
<b>BrdU</b>	Bromodeoxyuridine
<b><sup>14</sup>C</b>	Carbon 14 or radiocarbon
<b>CCND1</b>	Cyclin D1
<b>CDK2</b>	Cyclin dependant kinase-2
<b>CDK3</b>	Cyclin dependant kinase-3
<b>CDK4</b>	Cyclin dependant kinase-4
<b>cTropI</b>	Troponin-I cardiac isoform
<b>cTropT</b>	Troponin-T cardiac isoform
<b>DNA</b>	Deoxyribonucleic acid
<b>E2F1</b>	E2F transcription factor 1
<b>eGFP</b>	Enhanced green fluorescent protein
<b>FACS</b>	Fluorescence activated cell sorting
<b>Fgf10</b>	Fibroblast growth factor 10
<b>flk1</b>	Fetal liver kinase-1
<b>FSC</b>	Forward-side scatter
<b>G0/G1</b>	Cell cycle phases Gap 0 and Gap 1
<b>GAPDH</b>	Glyceraldehyde 3-phosphate dehydrogenase
<b>GATA-4</b>	GATA-BINDING PROTEIN 4
<b>Isl1</b>	Insulin gene enhancer protein 1
<b>Ki-67</b>	Antigen identified by monoclonal antibody Ki-67
<b>Mesp1</b>	Mesoderm posterior 1 homolog
<b>Nkx2-5</b>	Nk2 transcription factor related locus 2
<b>Q-PCR</b>	(quantitative) polymerase chain reaction
<b>RT-PCR</b>	Reverse transcription polymerase chain reaction
<b>S/G2/M</b>	Cell cycle phases Synthesis, Gap 2 and Mitosis
<b>SD</b>	Standard deviation
<b>SSC</b>	Side-scatter
<b>TACC2</b>	Transforming, acidic coiled-coil containing protein 2
<b>WT</b>	Wild Type

## **Introduction**

---

### **Cardiogenesis**

#### **Overview of cardiac origins and early morphogenesis**

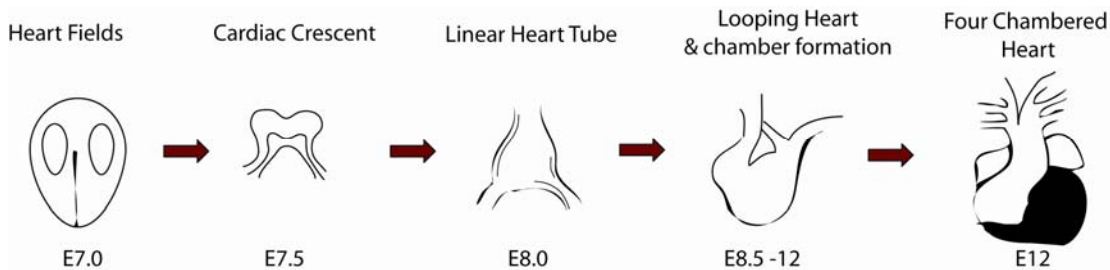
The heart is the first organ to develop in vertebrate embryos, and the myocardial cell lineage therefore one of the first specialized cell lineages to evolve from the pluripotent stem cell pool of the gastrulating embryo. The development of the heart from its origins in the pre-cardiac mesoderm into a four chambered pump supporting all pulmonary and blood circulatory requirements is a complex process, in vertebrates occurring through several well established transitions. Classical experimental studies with cultured chick embryos localized regions of cardiogenic cell populations in the blastoderm. The first fate mapping study was performed in the 1940's when Rawles *et al.* identified regions capable of generating beating tissue by grafting components of head-process-stage chick embryos<sup>1</sup>. Subsequent experiments in the 1960's through to the 1980's identified a pre-patterned heart field, regions which were mapped using radioactively labeled transplants, and confirmed the observation of a bilateral heart field<sup>2-4</sup>, harboring prospective myocardial cells.

In recent years, our understanding of the origin, development and fate of cardiac cell populations has increased substantially, due in large to the availability of elegant transgenic mouse models and emerging technologies. Marker systems which have contributed significantly to the field include the use of the  $\beta$ -galactosidase labeling assays with the LacZ reporter gene targeted to the  $\alpha$ -cardiac actin locus<sup>5</sup>, fibroblast growth factor 10 (*Fgf10*) locus<sup>6</sup> and also the Cre-LoxP recombinase system<sup>7, 8</sup> whereby the fate of insulin gene enhancer protein transcription factor (*isl1*)-expressing cells has been investigated<sup>9</sup>. It is now known that cardiac progenitor cells are derivatives of the mesoderm, one of the three primary germ layers formed from uncommitted epiblast cells as they transverse the primitive streak<sup>10, 11</sup>. These cells ingress through the primitive streak region during gastrulation<sup>12</sup>, cardiac progenitor cells have been localized to the anterior region of the streak in both chick and mouse embryos<sup>13, 14</sup>, and progress through the streak during gastrulation to form mesodermal and endodermal tissues. The initially generated mesodermal cells exit the posterior region of the primitive streak and contribute predominantly to the haematopoietic and vascular lineages of the blood islands in the yolk sac<sup>10</sup>.

Cardiac mesoderm derived from epiblast cells migrate from the streak in an anterior-lateral orientation around embryonic day E6.5, forming two groups of cells either side of the midline. It is at this stage that myocardial markers are first detected. These two separate progenitor cell populations have been coined the precardiac mesoderm<sup>3, 15</sup> or heart field<sup>16, 17</sup> and have been shown to segregate from a common progenitor at



gastrulation<sup>9, 18</sup>. Heart field cells are defined as those that have cardiac developmental potency when explanted and placed into culture<sup>19</sup>. These two cardiogenic regions undergo an additional morphogenesis as cells from both areas bridge the midline and form the cardiac crescent at embryonic day E7.5-E7.75 where differentiated myocardial cells are now observed. The formation of the linear heart tube results from the fusion of the cardiac crescent at the midline, arising in a structure composed of an inner endothelial tube surrounded by a myocardial epithelium. The heart tube then undergoes rightward looping at E8.5, in which the future ventricles become distinct and the atrial and venous precursors are manipulated dorsally and cranially bringing the destined chambers into alignment. The internal geography of the heart becomes complex at this stage, with the formation of endocardial cushions, the precursors of the tricuspid and mitral valves forming in the atrioventricular canal. Endocardial cushions are also responsible for the augmentation of the outflow tract, aortic and pulmonary valves.



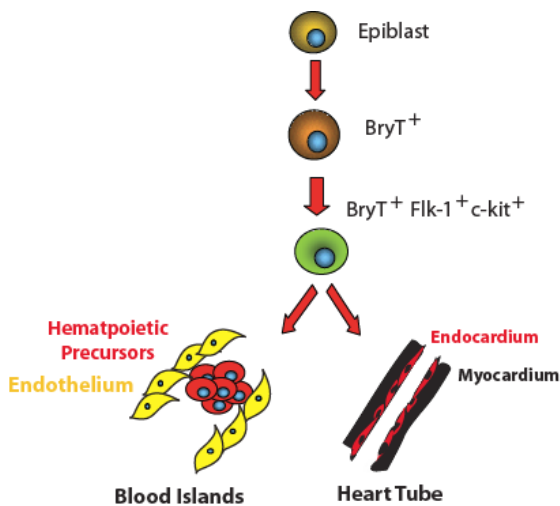
**Figure 1. Overview of cardiac morphogenesis in mouse.** Myocardial progenitor cells originate in the primitive streak from where they migrate to the anterior of the embryo to form the primary heart fields consisting of two bilateral regions of mesoderm at embryonic day 7 (E7.0). The two heart fields converge to form the cardiac crescent where differentiated myocardial cells are observed at E7.5. The heart tube forms through fusion of the cardiac crescent at the midline, consisting of an endothelial tube surrounded by a layer of myocardial cells at E8.0. Rightward looping then begins E8.5 and by E9.5 the heart has acquired well-defined chambers including the formation of the AV canal forming a boundary between the atrial and ventricular regions of the tube. Endocardial cushion formation precludes the formation of the heart valves the chambers become separated as a result of septation and the outflow tract is remodeled forming the aorta and pulmonary trunk resulting in the familiar four chambered heart E12.

### Early cardiogenesis

Studies in lower vertebrate species including frog and chick have revealed an evolutionarily conserved blueprint of heart development, mediated by specific signaling molecules and tissue-specific transcription factors. A myriad of genetic networks regulates the genesis of cardiomyocytes from their mesodermal origin to the fully differentiated, functionally and structurally competent phenotype. The fully developed heart is composed of several diverse cell lineages including cardiomyocytes, endothelial

cells, vascular smooth muscle and fibroblast cells that are derived from distinct subsets of mesoderm during the course of embryonic development.

Precursor cells in vertebrate mesoderm express the T-box transcription factor Brachyury T<sup>20</sup>. Brachyury is considered a marker of mesodermal progenitors which defines the earliest induction of the lineage. However, as these cells progress into the precardiac mesodermal stage of development they begin to express mesoderm posterior 1 and 2 (*Mesp1* and *Mesp2* respectively)<sup>21</sup>. Cells expressing *Mesp1* contribute to all four lineages in the heart. These factors are expressed transiently in the primitive streak and contribute to both primary and secondary heart fields<sup>22</sup>, in addition to regulating the migration of cells to the anterior region of the embryo<sup>23</sup>. Brachyury expression diminishes as newly formed mesodermal cells exit the primitive streak and migrate to varying sites in the developing embryo. Another gene associated with mesodermal differentiation is the fetal liver kinase-1 (*flk1*) gene encoding the vascular endothelial growth factors receptor-2. This gene was first identified as a receptor involved in haematopoietic and vascular development in the early embryo. It is expressed in the developing blood islands of the yolk sac<sup>24, 25</sup>. Fate mapping studies have revealed that *flk1* is expressed during the development of the myocyte and skeletal lineages<sup>26</sup>. Additional studies revealed that *flk1* is a broad mesodermal marker, expressed in cells giving rise to the haematopoietic, endothelial, cardiomyocyte and skeletal muscle lineages<sup>27</sup>.



**Figure 2. Mesodermal specification.** In the developing embryo, embryonic stem cell and epiblast differentiation develops to generate the hematopoietic and vascular lineages and subsequently the development of the Bry<sup>+</sup> flk-1<sup>+</sup> c-kit<sup>+</sup> population which is responsible for the establishment of the myocardial and endothelial cell lineages of the myocardium.

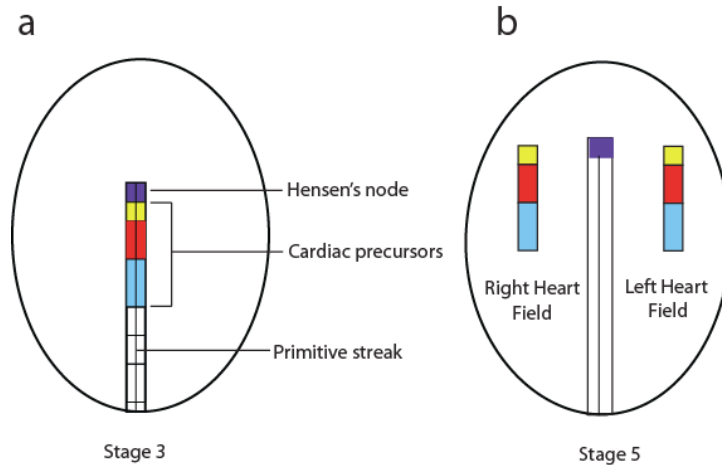
### Specification of cardiogenic mesoderm

Once localized in the anterior region, these cells are then exposed to several protein factors including bone morphogenetic proteins or BMPs, members of the transforming growth factor beta (TGF $\beta$ ) superfamily and FGFs (fibroblast growth factors) which are secreted by adjacent ectoderm and extra-embryonic tissues<sup>28-30</sup>. The mechanisms controlling the temporal aspects of mesoderm induction are poorly understood,

however both BMPs and Wnt signaling exert pivotal roles in the specification of mesoderm to the cardiac lineage<sup>31-33</sup>. BMP appears to promote cardiac specification<sup>28</sup>, application of the *Bmp2* and *Bmp4* to explants of cardiac or non cardiac regions in chick embryos induces the expression of early cardiac markers *GATA-4* (GATA-binding protein 4), *Nkx2-5* (Nk2 transcription factor related locus 2) and *Tbx2* (T-box transcription factor 2), resulting in a beating phenotype, whereas inhibition of BMP signaling blocks expression of *Nkx2-5* and cardiac differentiation<sup>28, 30, 33, 34</sup>. Myocardial transcription factors are thus first detected in the cardiac crescent, where myocardial differentiation is initiated. Wnt signaling exerts differential effects, which appear to be stage specific, and has been reported to act both agonistically or antagonistically depending on the developmental time-frame<sup>35, 36</sup>.

These cardiogenic signals appear to be at least partially conserved across species, it is well established that heart formation in *Drosophila* is orchestrated by genetic pathways homologous to those in vertebrates<sup>37, 38</sup>. Active expression of the homeobox gene *tinman* in flies and the related gene *Nkx2-5* in vertebrates are the earliest molecular markers of the cardiac lineage<sup>37</sup>. *Tinman* directly activates transcription of the *Mef2c* gene (Myocyte enhance factor 2c), which directs myocyte differentiation in flies<sup>39</sup>, however *Nkx2-5* is not essential for cardiac lineage commitment in mice. In vertebrates, other NK2 homeobox transcription factors may compensate for lack of *Nkx2.5* in determining the myocardial cell fate.

The developmental role of *Nkx2.5* has been extensively investigated - loss-of-function analyses by gene targeting have shown that *Nkx2.5*-deficient mice die at approximately E9.5 owing to abnormal morphogenesis of both the outflow and inflow components of the heart tube and looping of which is completely impaired<sup>40</sup>. Whereas commitment to the cardiac lineage is not affected in *Nkx2-5*-null cardiomyocyte precursors, the expression of several myocardial genes in the heart of *Nkx2-5*-deficient embryos, including that of the genes encoding myosin light chain 2v, atrial natriuretic peptide, brain natriuretic peptide, cardiac *Mef2c*, *eHand/Hand1*, N-myc and Iroquois homeobox protein 4 is reduced. These data indicate that *Nkx2-5* still exerts a crucial role in the transcriptional regulation of several sets of cardiac-specific genes<sup>41</sup>. Smad proteins also appear to directly activate early cardiac transcription factor genes, including *Nkx2-5*<sup>42</sup>, with *Smad 1, 3* and *5* regulated by BMPs during cardiac induction. It is at this cardiac crescent stage that cardiac precursor candidate cells commit to the cardiac lineage and become cardiac progenitor cells.



**Figure 3. Localization of cardiac precursors during gastrulation.** Each region of the heart is composed of a separate region derived from pre-patterned progenitor cells which are localized to the upper portion of the primitive streak and lying posterior to Henson's node. Grafting experiments in the chick embryo have identified these ordered domains of mesoderm at stage 3 in chick embryos (a). These different populations of cells are distributed in the same anterior-posterior order as they are later found in the tubular heart. By stage 5 the cardiac progenitors are found in the anterolateral plate mesoderm on either side of the primitive streak (b).

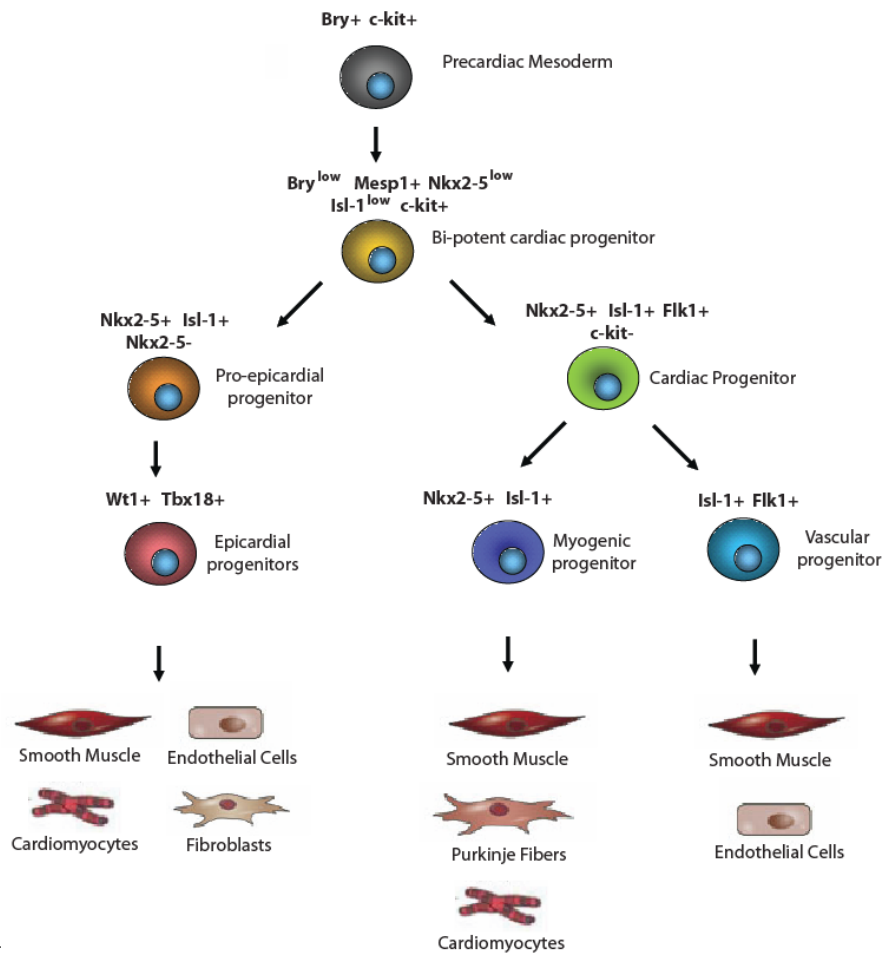
### Determination and bilateral heart field formation

It is now well established that the heart develops from at least two partitioned progenitor or stem cell pools that have distinct mesodermal origins and regulate cardiac development at distinct periods. The earliest population of cardiac progenitors referred to as the primary heart field originate in the anterior splanchnic mesoderm which gives rise to the cardiac crescent and subsequently the early heart tube, ultimately contributing to the left ventricle, parts of the right ventricle and atria and the atrio-ventricular canal<sup>2, 43</sup>.

The second cardiogenic population, referred to as the secondary heart field, is distinguishable at the cardiac crescent stage and is localized both anterior and dorsal to the cardiac crescent of the primary heart field. This was initially identified based on the expression of the *Fgf10* (fibroblast growth factor 10)<sup>6</sup>. Cells expressing *Fgf10* contributed to the myocardium at the anterior pole of the heart. A contribution of this anterior heart field to right ventricular as well as outflow tract myocardium was shown by a recent study<sup>43</sup>. A further contribution of this population of progenitors to the heart was elucidated by studies of the *Isl1* gene (insulin gene enhancer protein, a LIM homeodomain transcription factor). The T-box transcription factor *Isl1* was shown to be a marker of the heart field<sup>44</sup>, and reports with Cre-based fate-mapping studies have shown that *Isl1* progenitors contribute predominantly to the derivatives of the second heart field<sup>9, 44, 5</sup>, *Isl1*- deficient embryos were shown to lack all the derivatives of the secondary heart field including the outflow tract and right ventricle and both atria<sup>9</sup>. Both primary and secondary heart field progenitors contribute to the right ventricle,

atrioventricular canal, and atria. Recently, indications that *Isl1* is expressed in progenitors of both the primary and secondary heart fields have arisen<sup>45</sup>.

*Isl1*<sup>+</sup> progenitors retain the capacity for vascular differentiation and may give rise to endothelial and smooth muscle lineages<sup>46, 47</sup>, whereas *Nkx2-5*<sup>+</sup> precursors are more lineage restricted, expression correlates with the loss of multipotency and loss of endothelial<sup>48</sup> and hematopoietic lineage<sup>49</sup> potential in the precardiac mesoderm. The earliest cardiac progenitor expressing *Nkx2-5* also expresses *c-kit*, and is bipotent, capable of differentiating into both the smooth muscle and myocardial lineages<sup>50</sup>. Recently several groups have identified pro-epicardial cells expressing the T-box transcription factor *Tbx18* and Wilm's tumour suppressor protein (*Wt1*) which have been shown to contribute to the fibroblastic, smooth muscle and cardiomyocyte lineages<sup>51, 9</sup>.



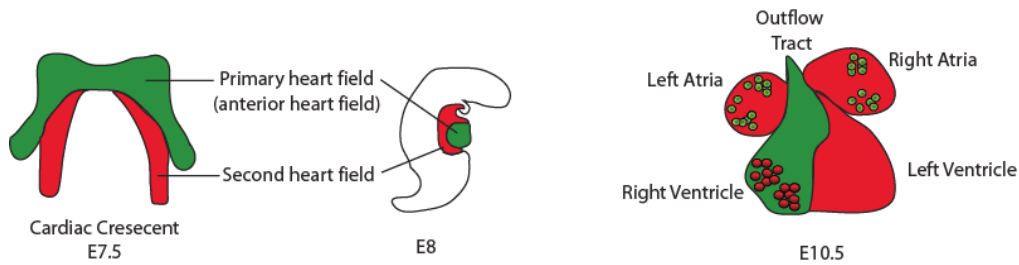
**Figure 4. Hierarchy of cardiac progenitor cells and their lineage specification.** Brachyury-T expression identifies precardiac mesodermal cells residing in the primitive streak. Ingression through the primitive streak coincides with the expression of *Mesp1*. Cardiac progenitors expressing *Nkx2-5/Isl1/Flk1* give rise to all three major lineages of the heart, endothelial, smooth muscle and cardiomyocytes. Myogenic progenitors are marked by expression of the transcription factors *Nkx2-5* and *Isl1* only and vascular progenitors by *Isl1* and *Flk1*. Epicardial progenitors have recently been elucidated, marked by the expression of the transcription factors

*Wt1* and *Tbx18* giving rise to smooth muscle, endothelium, cardiomyocytes and fibroblasts in the heart. Adapted from Wu *et al* 2006 and Zhou *et al* 2008.

### **Heart tube formation and looping**

The morphogenetic movements that the heart fields undergo in order to form a single heart tube rather than bilateral hearts requires the coordination of many processes and molecular components, including proper cell movements and polarity establishment, specification and differentiation of cardiac precursors. Soon after migration to more anterior positions in the embryo, the cardiac progenitors migrate ventrally as an epithelial sheet towards the anterior ventral midline where they proceed to fuse, proliferate and form a linear heart tube occurring around E8<sup>52-54</sup>. This occurs by the fusion of the paired mesodermal heart fields, consisting of two concentric layers of cells. The outermost layer constituting myocardium and the inner endocardium separated by a layer of extracellular matrix. The tube subsequently becomes attached to the dorsal wall of the pericardial cavity by a dorsal mesocardium and is polarized antero-posterior (AP)<sup>11</sup>. Several requirements for the ventral migration and fusion of the cardiac fields have thus far been identified. These include endodermal signaling induction<sup>55, 56</sup>, epithelial organization of the cardiac fields including the migration cues for midline migration<sup>57</sup>. It is at this stage that expression of differentiated cardiomyocyte structural markers appears, including cardiac troponin-T (cTropT), troponin-I (cTropI) and sarcomeric myosin. This gradual expression reinforces the notion that the phases of heart formation—specification, determination, patterning, and differentiation—happen sequentially but with significant temporal overlap.

Dorso-ventral (DV) and antero-posterior patterning are essential for the morphogenesis of the linear heart tube into a fully functional four chambered heart<sup>58</sup>. The linear tube is composed of five segments, each controlled by a specific developmental program and populated by pre-patterned progenitors. These segments are the atrioventricular canal; inflow tract; outflow tract; primitive right ventricle and primitive left ventricle. As development continues, the heart tube elongates at both arterial and venous poles, and begins to undergo a rightward looping<sup>59</sup>. The molecular signals that mediate the interpretation of left-right signals include expression of the *Pitx2* (Pituitary homeobox 2) gene in the lateral plate mesoderm, which is dependant on *Nodal* and is enhanced by the transcription factor *Nkx2-5*<sup>60</sup>. *Pitx2* is expressed in the left portion of the cardiac crescent and in the left side of the linear heart tube<sup>61</sup>, and subsequently in the left atrium, ventral portions of the ventricles and left-ventral areas of the outflow tract after looping. Although overexpression of *Pitx2* can affect looping, *Pitx2* expression and heart looping has been shown to be uncoupled, a null mutant exhibits no alteration in looping morphogenesis in contrast to *Nkx2-5* which is indispensable for looping<sup>62</sup>, though left-right defects do occur.



**Figure 5. Primary and secondary heart fields.** There are two sources of myocardial progenitors in the developing mouse heart. Illustrations depict the relative position and movement of the secondary heart field cells (red) relative to the primary heart field (green) from the cardiac crescent stage through the looping stages of heart development in the mouse. Lineage contributions to the heart at E10.5 are shown.

### Chamber formation

Individual cardiac chambers do not become morphologically distinguishable until after cardiac looping, although their fate is programmed much earlier. The basic helix loop helix genes *HAND1* and *HAND2* are expressed predominantly in the primitive right and left ventricular segments of the looping heart during mouse development<sup>63</sup>. Other genes implicated in the looping and early chamber formation process include those encoding transcription factors such as *Cited1*; *Irx1/2/3*, *Tbx20*; gap junction proteins *connexin 43* and *40*; the peptide atrial natriuretic factor (*ANF*) and the cytoskeletal protein *Chisel*<sup>64, 65, 58</sup>. At the completion of looping the heart has assumed a form that closely resembles that of the adult organ. Looping is completed around E12.5 in the mouse.

As looping progresses, the expression pattern of cardiac genes is altered, many genes initially expressed in tubular myocardium become restricted to the presumptive atrial and ventricular promordia<sup>66</sup>. Two hairy-related transcription factors, *Hey1* and *Hey2* are expressed in atrial and ventricular progenitor cells respectively<sup>67, 68</sup>, and are critical for the anterior-posterior patterning of the myocardium. The Hey family of transcription factors are regulated by Notch signaling. Iroquois-related homeobox protein *Irx4* has been shown to label ventricular progenitor cells localized in the cardiac crescent, and is expressed exclusively in the ventricular tissue<sup>41</sup>. The specification of atrial development is marked by the expression of *GATA-4* and *Tbx5*, both of which are expressed throughout the cardiac crescent but localized to the outflow tract after tubulogenesis is completed. The orphan nuclear receptor *COUP-TFII* is expressed in atrial precursors, and is required for atrial but not ventricular growth<sup>69</sup>.

### Development of cardiac function and conductive system

Two migratory cell populations facilitate further cardiac morphogenesis. These are the cardiac neural crest and the epicardial cells which arise from the developing dorsal neural tube and proepicardial epithelium respectively. Cardiac neural crest cells contribute to the septation of the aortic sac, and pharyngeal arteries<sup>70</sup>. Epicardial cells migrate to the surface of the heart and give rise to all cellular components of the vascular

system: smooth muscle cells; fibroblasts and endothelial cells<sup>71</sup>. In addition to contributing cellular elements to the developing heart, these cells also exert influence on surrounding cell populations, in the form of growth factors released by the epicardium which are essential for the proliferation and hypertrophy of cardiomyocytes in the ventricular walls<sup>72</sup>. Epicardium-derived endothelial cells also provide the signals which induce cardiomyocytes to differentiate into purkinje fiber cells<sup>73</sup>.

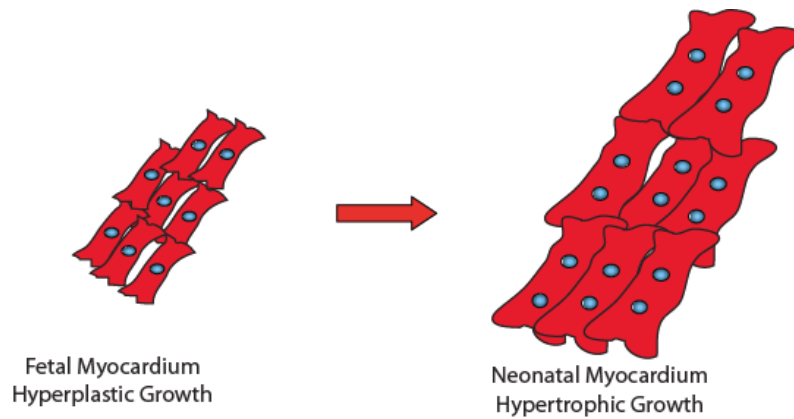
The increasing hemodynamic load exerted on the heart during embryonic development necessitates the proliferation of cardiomyocytes within each chamber. This process is in part mediated by neuregulin growth factors secreted from the endocardium including *ErbB2* and *ErbB4*. These myocardial receptors are required for the formation of the trabeculae<sup>74</sup>. Septation of the cardiac tube into distinct chambers is mediated in part by TGF- $\beta$  family members<sup>75</sup>. This signaling mediates the transformation of endocardial cells into mesenchymal cells and subsequent migration into the cardiac cushion regions. After re-localization to the cardiac cushions, swellings of the extracellular matrix, differentiation into fibrous tissue of the valves begins. NF-ATc and Smad transcription factors have been shown to be crucial in cardiac valvogenesis<sup>76</sup>. Heart organogenesis culminates with the formation of a four-chambered structure with well developed circulatory and conduction systems.

### **Cardiomyocyte Growth Patterns**

The growth and proliferation of cardiomyocytes occurs in two temporally distinct phases. During embryogenesis, heart mass mainly increases by cell division of cardiomyocytes in a process known as hyperplasia<sup>77</sup> in which karyokinesis and cytokinesis are paralld<sup>78</sup>. This ability of embryonic cardiomyocytes to undergo DNA synthesis and cellular division is in contrast to skeletal muscle cells in which proliferation and differentiation are uncoupled as mutually exclusive processes<sup>79</sup>.

It has been suggested that cardiomyocytes lose their ability to proliferate soon after birth<sup>80</sup>. Once cell division ceases in the mammalian heart, growth is achieved exclusively by increases in cell size in a process known as hypertrophy<sup>81</sup>. This transition from hyperplasia to hypertrophy in the early neonatal period is identified in some species by the phenomenon of binucleation. Prior to terminal withdrawal from the cell cycle, cardiomyocytes undergo a final round of incomplete cell division, in which karyokinesis is uncoupled from cytokinesis resulting in failure to complete cell division and culminating in binucleation<sup>78</sup>. In murine hearts, >90% of cardiomyocytes are binucleated. In contrast to mammals, the cardiomyocytes of lower vertebrates do not lose the ability to divide postnatally. It has been observed in Zebrafish and Newt that heart tissue is regenerated after injury<sup>82, 83</sup>. The molecular mechanisms which control cardiomyocyte cell cycle withdrawal, and cessation of proliferation in adult mammalian hearts is poorly understood.





**Figure 6. Growth characteristics of cardiomyocytes in development** In the embryonic heart increases in cardiac mass are the result of rapid proliferation of mononucleated cardiomyocytes, DNA synthesis and cytokinesis. Shortly after birth in the neonatal period approximately, day 3-4 in mice there is switch in myocyte growth kinetics. Myocytes withdraw from the cell cycle and any increases in cardiac mass are attributable to increases in cell mass as a result of hypertrophy. DNA synthesis occurs in the absence of cytokinesis resulting in binucleation, representing the majority of cardiomyocytes in murine hearts. Thereafter there is terminal withdrawal from the cell cycle in the late neonatal period.

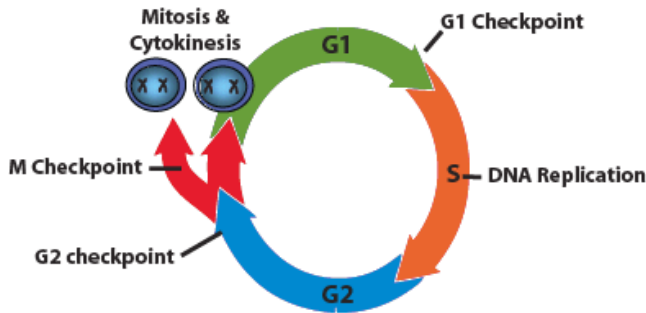
### Cell Cycle Overview

Cell proliferation involves cell growth and an ordered sequence of events: replication of the genome, chromosome segregation and cell division. Cell division is regulated by a set of restriction points, the best characterized of these checkpoints are the G1/S and G2/M transitions. A family of serine/threonine protein kinases known as cyclin-dependent kinases (CDKs) are responsible for cell cycle progression and involved in transcriptional control and DNA repair. The core machinery required for cytokinesis are components of the central spindle; RhoA guanosine triphosphatase (GTPase) and its regulators; non-muscle myosin II; actin and direct regulators of its assembly into filaments and factors required for fusion of membrane vesicles.

At the onset of anaphase, proteolytic destruction of cyclins inactivates mitotic kinases which facilitate dephosphorylation and subsequent activation of machinery necessary for mitotic spindle assembly and chromosome segregation. Localization of the central spindle is regulated by the *aurora B* complex<sup>84</sup>, and includes the proteins *NuSAP* (nucleolar spindle-associated protein), and tumour suppressor *BRCA2* which affect the progression of cytokinesis<sup>85, 86</sup>. Additionally the cleavage furrow protein anillin has been inextricably linked to cytokinesis<sup>87</sup>. Mammalian cells form a cleavage furrow which is a contractile ring attached to the plasma membrane which partitions the cell into two lobes, consisting of a network of actin and myosin filaments. The assembly of the contractile ring is directed by the RhoA guanosine triphosphatase (GTPase).

A multifaceted response coordinates cell cycle progression with DNA repair, chromatin remodeling, transcriptional programmes and cell death, all mediated by a series of checkpoints. The key components comprising mammalian cell cycle checkpoints are the so called sensors: *ATM* (ataxia-telangiectasia-mutated) and *ATR* (ataxia and rad3

related) kinase Rad9-Hus1-Rad1 clamp complexes mediating the detection of DNA damage<sup>88</sup>. Mediators include *BRCA1*, and *Claspin*<sup>89</sup> which activate the effector kinases of the phosphatidylinositol 3-kinase (*PI3K*) family. Signal transduction is facilitated by the serine/threonine signal transducing kinases, represented by *Chk1* and *Chk2*<sup>89</sup>. Finally a large variety of effector proteins are in operation in checkpoint regulation, including *Cdc25* phosphatases, DNA repair proteins, transcription factors *E2F1* and *p53* and other categories of proteins.



**Figure 7. Overview of the cell cycle** Cell division consists of two consecutive processes, DNA replication and segregation of replicated chromosomes into separate cells. This progression consists of four distinct phases: G<sub>1</sub> phase, S-phase (synthesis), G<sub>2</sub> phase (collectively known as interphase) and M-phase (mitosis). The progression through each phase is closely regulated by a number of cell cycle control mechanisms and is dependent on the proper progression and completion of the previous phase. Quiescent cells or non-mitotic cells are said to be in G<sub>0</sub> phase.

### G1/G0 checkpoint

The first checkpoint occurs prior to entry into S-phase, cells traversing G<sub>1</sub> activate the checkpoint transducing kinases *ATM/ATR* and *Chk1/Chk2* complexes which in turn target effectors *Cdc25A* phosphatase and *p53* transcription factor. *p53* stimulates the transcription of several different genes including *p21*, *Mdm2* and *Bax* which result in CDK inhibition and cell cycle arrest and prevents the replication of damaged DNA<sup>90</sup>.

Cell cycle progression is coupled with the sequential activation of cyclin-dependent kinases (CDKs). *CDK2* forms active complexes with both cyclin E and cyclin A, *CDK2* is involved in regulating critical molecular events, such as inactivation of pRb initiation of DNA replication, centrosome duplication and histone synthesis<sup>91-93</sup>.

*Mdm2* regulates *p53* by binding and preventing *p53* transcriptional activity contributing to *p53* degradation by facilitating its ubiquitination and thus providing a negative feedback loop<sup>94</sup>. The binding of regulatory proteins can also mediate *p53* ubiquitination, *p19* (*ARF*) protein encoded by the *ARF-INK4* locus binds *Mdm2* and prevents *Mdm2* mediated *p53* proteolysis<sup>95</sup>. When cells are severely damaged, *p53* induces apoptosis by activation of the genes *Bax*, *Fas* and others involved in the oxidative stress pathway<sup>96, 97</sup>.

### S-Phase checkpoint

The S-phase checkpoint ensures that the onset of mitosis is dependent on the completion of DNA replication. Little is known about S-phase checkpoint control in mammals.

Several studies have demonstrated the suppression of both the initiation and elongation phases of DNA replication<sup>98</sup>. The major pathway involved in the S-phase checkpoint mediated by the *ATM/ATR* and activates the *cdc25A-cyclinE(A)/Cdk2* cascade<sup>99</sup>. There is also evidence that the *ATM*-mediated phosphorylation of *NBS1* (Nijmegen breakage syndrome 1) is required for S-phase arrest<sup>100</sup>, and inhibition of *CDK2* activity leads to the amplification of an *ATM*- and possibly *ATR*-mediated intra-S-phase checkpoint<sup>101</sup>.

### **G2 /M Checkpoint**

The G2/M checkpoint prevents cells from initiating mitosis when they experience DNA damage during G2, or if they progress into G2 with unrepaired damage inflicted from previous stages of the cell cycle. A G2 checkpoint ensures that DNA catenations have been sufficiently resolved before mammalian cells enter mitosis. DNA topoisomerase II (*topo II*) is required for chromosome condensation and segregation in eukaryotes<sup>102</sup>. Although these are mitotic processes, their successful completion depends partly on *topo II* activity during DNA replication and in G2-phase. Another key target of the G2 checkpoint is the mitosis promoting cyclin B kinase. Activation after DNA damage is mediated through *ATM/ATR* and *Chk1/Chk2* mediated signaling.

Eukaryotic cells also arrest in metaphase when microtubule formation is disturbed and also arrest if chromosomes fail to become bi-oriented on the spindle and have not congressed to the metaphase plate<sup>103</sup>. The *Bub2* pathway has been associated with inhibition of mitotic cyclin/Cdk activity and thus prevents spindle disassembly and exit from mitosis. The *Bub2* pathway responds to defects in spindle orientation, spindle localization, spindle damage and DNA damage<sup>104</sup>.

### **Cardiomyocyte Cell Cycle Control mechanisms**

Cardiomyocytes exhibit three developmentally determined forms of cell cycle control and expansion, these are: proliferation, binucleation and hypertrophy. There is little evidence for significant postnatal cardiomyocyte proliferation and regeneration. Many forms of cardiac disease are associated with the absence or loss of functional myocardium, injuries acquired after birth such as ischemia/reperfusion through intervention or myocardial infarction all lead to cardiomyocyte loss and a reduction in cardiac function. This comprised function is persistent in adult life which would indicate that the ability of the myocardium to regenerate is diminutive. In contrast the cardiomyocytes from lower vertebrates maintain their proliferative capacity and are capable of postnatal renewal<sup>105</sup>. The cessation of myocyte proliferation in mammalian postnatal life has been attributed to a block in cell cycle<sup>106, 107</sup>, however the mechanisms that regulate myocyte hyperplasia arrest remain poorly understood and largely unknown.

### **Embryonic Cardiomyocytes**

Much of the increase in cardiac mass during embryonic development arises predominantly from the proliferation of mononucleated contractile cardiomyocytes. Embryonic cardiomyocytes exhibit formidable expression of cyclins involved in G1, S,

G2 and M-phase. These include Cyclin D1, cyclin D2, cyclin A, B1 and E<sup>108, 109</sup>. The cyclin-dependent kinases *Cdc2*, *CDK2*, *CDK4* and *CDK6* are also highly expressed at this stage of development<sup>110</sup>. These complexes are responsible for the phosphorylation of the *Rb* (retinoblastoma) family members which subsequently initiate the release of *E2F* transcription factors. *E2F* is required for the transcription of genes facilitating G1 exit and DNA synthesis<sup>111</sup>. Conversely, low expression of cyclin inhibitors is observed in embryonic cardiomyocytes, the *INK4* family (including *p19*) and the *Cip/Kip* family (including *p21* and *p27*) have a broad function of inhibition of *CDK4/6*; *CDK2* and *Cdc2* activity<sup>112</sup>.

### **Neonatal Period and Binucleation**

Cardiomyocytes proliferate rapidly throughout fetal development but lose this ability shortly after birth in the neonatal period in most mammals, occurring day 3-4 in mice. Prior to terminal withdrawal from the cell cycle, myocytes undergo a final bout of DNA synthesis, however karyokinesis becomes uncoupled from cytokinesis resulting in the formation of binucleated cardiomyocytes. Cytokinesis is the final step of cell division and is responsible for the equal portioning of cytoplasm between daughter cells to complete mitosis<sup>113</sup>, DNA synthesis results predominantly in binucleation in the neonatal period. The process of nuclear division without the completion of cellular division is known as acytokinetic mitosis. Cytokinesis is a complex process involving regulatory and cytoskeletal components. To complete cell division, fully differentiated embryonic cardiomyocytes must first disassemble their myofibril complex completely<sup>79</sup>, which occurs in two steps. Firstly Z-disc and thin (actin)-filament proteins followed sequentially by M-band disassembly occurs, reminiscent of sarcomere disassembly during muscle wastage<sup>114</sup>. A gradual increase in the complexity of myofibrils on cardiomyocytes is observed as terminal differentiation progresses beyond the postnatal phase<sup>115</sup>.

The formation of binucleated myocytes has been associated with failure in formation of the actin-myosin contractile ring in the cleavage furrow at the final step of cytokinesis<sup>116</sup>. However, this is not the case, as the actin-myosin ring does form during the process of binucleation in rat hearts<sup>117</sup>. A more recent study has demonstrated that there is defective focusing of the cleavage furrow regulator protein anillin in the mid-body region which results in the failure of cardiomyocytes to undergo abscission<sup>118</sup>. In the hearts of rodents the accumulation of binucleated myocytes begins day 3-4 and is completed by the third postnatal week with >90% of cardiomyocytes binucleated<sup>80, 119</sup>. Roughly 25% of cardiomyocytes are binucleated in humans at birth, and this proportion stays constant throughout life<sup>120</sup>. Another study has shown that there is a distinct and differential decrease in cyclin kinase activity in myocytes during the neonatal period. Specifically, an increase in *cdc2* activity in the neonatal stage, corresponding to the binucleation period<sup>110</sup>, and a decrease in *CDK4* and *CDK2* activity were observed.

An increase in the *INK4* family member *p16* during the neonatal period is detected, which decreases in adult life, representing a potential marker of cardiac senescence<sup>121</sup>. *p16* functions as a stabilizer of the tumor suppressor protein *p53* as it can interact with,

and sequester, *Mdm2* responsible for the degradation of *p53* and inhibits *CDK4* and *6* activity necessary for *Rb* phosphorylation. Despite these considerations, the exact basis for this failed cytokinesis and resulting binucleation is unknown.

### **Adult Cardiomyocytes and Cell Cycle Withdrawal**

Terminal differentiation of cardiomyocytes occurs shortly after birth. This process is characterized by the up-regulation of tissue-specific genes including the structural proteins  $\alpha$ -myosin heavy chain (MHC) and cardiac actin in the late perinatal period. Embryonic and neonatal cardiomyocytes predominantly express  $\beta$ -myosin heavy chain (MHC) and skeletal actin<sup>122</sup>. Another hallmark of terminal differentiation in myocytes is that the majority do not reenter the cell cycle in response to mitogens or physiological stress. This observation is reinforced by clinical observations - primary myocardial tumours are rarely observed in adults and myocardial regeneration is not observed in disease or injury that result in myocyte loss. There is however evidence that cardiomyocytes may reenter the cell cycle in human hearts in response to injury<sup>123</sup>. Despite this and other manifestations of cell cycle re-entry<sup>124 - 126</sup>, there is still significant controversy concerning the level at which DNA synthesis occurs in healthy or injured hearts<sup>127, 128</sup>. There have even been suggestions that in the absence of ongoing myocyte proliferation in adult rodent life, the entire population of ventricular myocytes would dissipate within five months, such is the inherent rate of apoptosis in the myocardium<sup>129</sup>. Labeling assays utilizing tritiated thymidine have revealed only minute levels of DNA synthesis in normal (0.0005%) and injured (0.008%) adult mouse ventricular cardiomyocytes<sup>130</sup>. Restricted cell cycle re-entry may occur in human versus mouse hearts, with 1-4% of cardiomyocytes observed as being mitotically active<sup>126</sup> in response to injury. The fate and of these proliferating cells remains unresolved and the issue of species-specific idiosyncrasies pertaining to myocyte proliferative capacity remain unresolved. The discovery of mitotic cardiomyocyte nuclei in a minority of cardiomyocytes could very well be an observation of endoreduplication, a plausible explanation for DNA synthesis. Indeed, many of the variations in cell cycle activity can be traced to flaws in the identification of cardiomyocyte nuclei in histological sections, and the sensitivity of the assay used<sup>131</sup>. Currently the most sensitive method for determining the age of cells is <sup>14</sup>C dating with a resolution of 1-2 years<sup>132</sup>, making it unsuitable for studies in rodents. We and others have established with <sup>14</sup>C dating that human cardiomyocytes are generated into adulthood<sup>133</sup>, albeit at exceptionally meager levels, and certainly proliferation of this degree has little impact under circumstances of injury to the functionality of the myocardium.

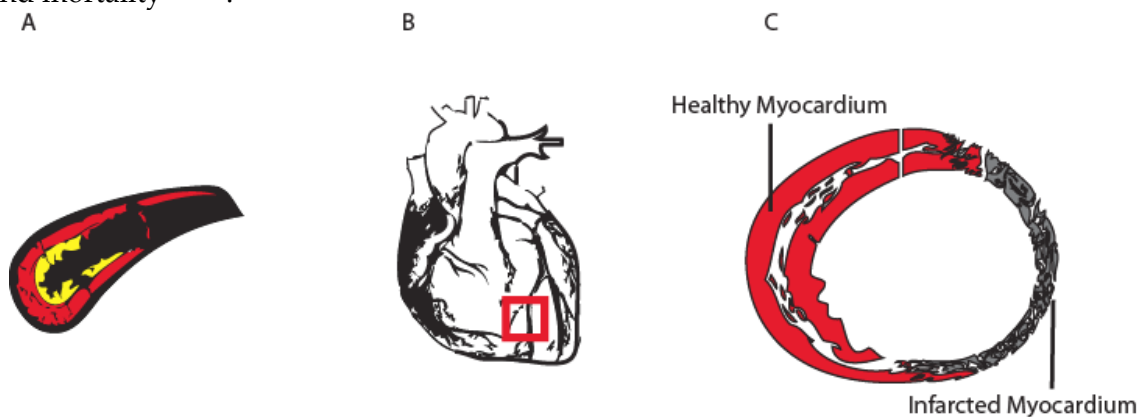
The relinquished ability to proliferate in the late neonatal period is accompanied by changes in cell cycle regulatory molecules. The protein expression of cell cycle mediators cyclins D1, D2, D3, B1 and E and their affiliated kinases is downregulated in adult cardiomyocytes<sup>108, 110</sup>. This down-regulation has also been shown to be reciprocated by the up-regulation of cell cycle inhibitors<sup>134</sup>. *p107* pocket protein expression parallels that of *Rb*, highest in embryonic and completely down-regulated in adult myocytes, with a role in inhibiting cell cycle progression through regulation of *E2F* responsive genes<sup>135</sup>.

## Cardiac Disease and Therapy

### Myocardial Infarction and loss of function

Cardiovascular disease is the leading cause of death and illness in the developed world<sup>136</sup>. Atherosclerosis is a progressive disease associated with the accumulation of lipids and fibrous elements in the coronary arterial system supplying the myocardium. The accumulation of lipids with an atheroma and subsequent inflammatory response can result in the thrombosis of a ruptured fibrous plaque cap. When this plaque ruptures, blood coming into contact with the tissue factor coagulates and generates thrombus formation. If this thrombus occludes a vessel persistently, the result is an acute myocardial infarction. Acute myocardial infarction due to thrombosis of an atherosclerotic coronary artery has shown to result in irreversible and irreplaceable loss of myocardium<sup>137</sup>.

Subsequent to coronary artery occlusion, comprehensive myocyte necrosis and ventricular wall remodeling transpires. There is migration of macrophages and endothelial cells to the border and infarct zones and the necrotic tissue is initially replaced with granulation tissue<sup>138, 139</sup>. This initial deposition of proteoglycans, osteopontin and fibronectin is succeeded by myofibroblastic deposition of collagen and the initial matrix becomes resorbed. The resulting apoptosis of this granulation tissue results in the formation of scar tissue, composed mainly of collagen matrix<sup>140</sup>. As this process develops there is further thinning of the ventricular wall and alteration in chamber dynamics through ventricular remodeling. The associated impairment and reduction of myocardial function frequently results in heart failure, aneurysm formation and mortality<sup>141, 142</sup>.



**Figure 8. Myocardial infarction** The occlusion of coronary arteries by atherosclerosis (A) and thrombus formation results in acute myocardial infarction (B). Extensive cardiomyocyte necrosis and remodeling of the ventricular wall occurs. The necrotic tissue is initially replaced with granulation tissue and eventually this is replaced by collagen deposition resulting in scar tissue formation. Healthy left ventricular myocardium and injured myocardium with scar tissue formation and necrotic tissue (C) Progressive ventricular remodeling and wall thinning are associated with loss of cardiac function and congestive heart failure.

## **Cardiac Regeneration**

It is accepted that the heart's inherent ability to repair itself is insufficient to regenerate tissue damaged by trauma such as ischemic conditions leading to cardiac infarction. In humans, the kinetics of cardiomyocyte renewal as established by  $^{14}\text{C}$  dating is estimated at an annual turnover of 1% in the left ventricle at the age of 20, decreasing to 0.3% at the age of 75<sup>133</sup>. The magnitude of myocyte turnover at the mean ages when myocardial infarctions generally occur as a result of coronary artery disease is therefore diminutive. The withdrawal from the cell cycle of adult cardiomyocytes contributes much to this dilemma, even though some mitosis has been observed in human myocardium following injury<sup>126</sup>, this proliferation is of too little magnitude to enhance the biological function of the damaged heart. Somatic stem cells which migrate to heart tissue and differentiate into cardiomyocytes have been reported<sup>143, 144</sup>, yet these events are still insufficient to reverse pathological conditions. Even pools of resident stem cells in the heart have been reported<sup>145, 146</sup>, colloquially named 'cardiac stem cells' or CSCs. It is claimed that these 'stem cells' reside in interstitial niches within the myocardial tissue and that the heart is actually regulated by a stem cell compartment. Despite the potential of these cells to contribute to the formation of new myocardium, the proliferative and integrative requirements are colossal. In order to cause heart failure, an infarct must manifest itself as an area of necrosis and scar tissue in 25% of the ventricular tissue<sup>147</sup>. The myocyte deficit of such an infarction would therefore be in the order of one billion cardiomyocytes. Not only do future therapies need to address the restoration of lost myocytes, but also their integration and synchrony with the electrophysiological and electromechanical elements of the myocardium. Several cell sources and types have been investigated for their potential to reverse pathological damage. Diverse cell types have been transplanted into infarcted hearts, and there is evidence that many are equipotent. Nevertheless, most of the benefit observed is uncoupled from the graft cells beating in synchrony with the host myocardium, but a so-called improvement in the passive mechanics of the infarct zone. This usually manifests itself as donor cell engraftment in the border zone of the infarct region and subsequent strengthening or contributions to the infarcted ventricular wall, which results in improved mechanical properties<sup>148</sup> of the insulted myocardium. Other side-benefits have also included paracrine effects whereby donor cell production of signaling molecules may initiate or promote survival of native cardiomyocytes<sup>149</sup>.

## **Cell Based Repair**

### **Bone Marrow transplantation**

Both hematopoietic stem cells and other marrow components have been investigated as therapeutic agents for myocardial infarction<sup>150, 151</sup>. Several studies have investigated the potential of these hematopoietic cells to transdifferentiate into cardiomyocytes post transplantation in infarcted myocardium. A study by Orlic *et al.* documented extensive myocardial regeneration in infarcted hearts following transplantation with c-kit<sup>+</sup> enriched hematopoietic stem cells<sup>150</sup>. However, further investigations failed to detect any transdifferentiation events despite the use of various transgenic approaches<sup>151-154</sup>. Such

evidence suggests that there is little contribution of hematopoietic cells to ventricular remodeling and that no significant transdifferentiation to the cardiac lineage, occurs following transplantation. Fusion derived cardiomyocytes have been observed following transplantation, but at a low frequency<sup>153</sup>. Despite this several clinical trials have been conducted with BMT as a therapy for myocardial infarction<sup>155-157</sup>, but currently only short term benefits are observed, in studies with 6 month follow-ups, no long-term benefit in cardiac performance was perceived despite the use of several assessment methods including electrocardiogram-gated single-photon-emission computed tomography (SPECT), echocardiography, and MRI<sup>158</sup>.

### **Embryonic Stem Cells**

Many groups have shown that cardiomyocytes can be obtained consistently from embryonic stem cells (ESCs)<sup>159</sup> or induced pluripotent stem cells (iPS). Several studies have achieved directed differentiation of mouse and human ESCs into cardiomyocytes<sup>160, 161</sup>. Myocytes may be derived in sufficient quantities for research, but not therapeutic strategies, usually representing less than 1% of the cells in a differentiating culture<sup>162</sup>. The versatility of ES cells in their capacity to generate and differentiate into many lineages is a powerful resource but also their ruination. Teratomas are probably the most considerable risk associated ESC derived therapies, and have been reported following transplantation<sup>163</sup>. Many groups have adopted a strategy of pre-differentiation and subsequent enrichment involving cardiac specific promoters<sup>164</sup> and non-genetic methods including surface marker proteins<sup>165</sup> and even mitochondrial fluorescent dyes<sup>166</sup>. Although potentially providing an unlimited source of cardiomyocytes, the adequate purification methods for these cells prior to cellular therapy is still in relative infancy.

### **Skeletal Myoblasts**

One of the first cell types proposed for cellular therapy following myocardial infarction were skeletal muscle-derived progenitor cells, also known as myoblasts. It has been shown that autologous skeletal myoblasts can differentiate into striated muscle cells within damaged myocardium<sup>167</sup>. Despite hopes of transdifferentiation, there is evidence that these cells retain commitment to the skeletal muscle lineage<sup>168</sup>. Several negative aspects of transplantation with this cell type include observations of electromechanical incompatibility with host myocardium<sup>169</sup> and the presence of mature skeletal myofibers in infarct zones months post transplantation. However, improvement of left ventricular function is observed following grafting<sup>170</sup> in several clinical trials although several patients have been documented to develop arrhythmias, and it is unclear if these were associated with the cell therapy.

### **Mesenchymal Stem Cells**

Bone marrow mononuclear cells contain a rare population of adult stem cells, which *in vitro* can adhere to tissue culture plastic, and give rise to fibroblastic, spindle-shaped colonies. These multipotent, non-hematopoietic cells are referred to as bone marrow



mesenchymal stem cells (MSC). Bone marrow derived MSC can differentiate to osteoblast, chondrocyte and adipocyte lineages<sup>171</sup>. In addition, it was reported that these mesenchymal cells also had the ability to differentiate into cardiomyocytes *in vitro*<sup>172</sup>. This ability and their reported allotolerance and subsequent local immunosuppressive functions<sup>173</sup> and homing ability<sup>174</sup> in comparison with other cell types considered for cardiomyoplasty, makes them promising candidates for cell therapy. It should be noted that a report found *in vitro* expanded MSC differentiating into bone-forming osteoblasts – rather than cardiomyocytes - in transplanted mouse hearts<sup>175</sup>. Preventing the differentiation of multipotent cells into undesirable cell types and lineages is a major consideration.

### **Paracrine Effects in Cell Based Repair**

The paracrine mechanisms associated with progenitor cells and identification of cell-derived paracrine factors which mediate improvements in cardiac function are largely unknown and under intense investigation by many groups. The infusion of cytokines rather than cell transplantation could provide the necessary signals to induce proliferation and regeneration of resident progenitor and stem cells and even mature fully differentiated myocytes. This cytokine mediated mobilization is routinely used in the hematopoietic field. Several studies have focused on the role of G-CSF to mobilize progenitor cells to the heart following infarction<sup>176, 177</sup>, showing significant regeneration in murine models. However, subsequent studies provide evidence that no regeneration occurs following G-CSF treatment<sup>153</sup> and that these cells contribute little to damaged myocardium. Nevertheless a co-transplanting strategy, in which fibroblasts together with ES cell- derived cardiomyocytes were introduced into the infarcted hearts of mice resulted in 6-10 fold cardiomyocyte yield, indicating that paracrine factors may be necessary for cardiomyocyte engraftment<sup>154</sup>. The protein periostin has been shown to induce the proliferation of cardiomyocytes *in vivo* following myocardial infarction<sup>178</sup>. Another cytokine shown to regulate proliferation of cardiomyocytes is the TNF-related weak inducer of apoptosis (*TWEAK*). Stimulation of rat neonatal and adult cardiomyocytes with *TWEAK* resulted in DNA synthesis, proliferation and increased cardiomyocyte numbers<sup>179</sup>.

### **Resident Myocardial Progenitors**

Several groups have suggested the existence of a small resident progenitor population in the heart, with cardiomyogenic potential, which also exhibit the stem cell properties of self-renewal and multipotency. A definitive marker for these so-called cardiac stem cells (CSCs) has not yet been identified, but many potential candidates have been reported. Two surface markers associated with hematopoietic stem cells have been described in cell populations occurring in the heart, stem cell antigen-1 (Sca-1) and c-kit. Sca-1 expressing cells have been isolated from hearts of mice and injected intravenously into mice following myocardial infarction<sup>180</sup>, yielding donor derived cardiomyocytes expressing cardiac markers by mechanism of fusion and transdifferentiation. A population of c-kit expressing cells with cardiomyogenic potential has also been isolated

from the rat heart, and after expansion, transplanted into ischemic myocardium<sup>181</sup>. Consequently these cells were reported to differentiate into cardiomyocytes, and endothelial and smooth muscle lineages. The engrafted cells exhibited cardiac myosin and improved ventricular function. Side-population cells, identified by their ability to exclude the Hoechst dye were first described in the bone marrow and thereafter in the adult mouse heart<sup>182</sup>, and when co-cultured with heterogeneous cardiac cell populations, expression of  $\alpha$ -actinin sarcomeric protein was induced. Some side population cells express c-kit and /or Sca-1 and like their c-kit<sup>+</sup> and Sca-1<sup>+</sup> counterparts are able to generate cardiomyocytes *in vitro* and *in vivo* <sup>183</sup>.

Another population of cardiac stem cells expressing islet-1 were detected in mouse, rat and human neonatal and adult hearts, albeit in small numbers and in adult limited to the right atrium<sup>184</sup>. These cells have the ability to self renew *in vitro* on cardiac mesenchymal feeder cells and can be stimulated to differentiate into cardiomyocytes. Lineage tracing experiments have previously shown that *Isl1* expressing cells can differentiate into endothelial, smooth muscle, right ventricular and atrial lineages during normal cardiogenesis<sup>185</sup>. The role that *Isl1* progenitors exert in formation of heart lineages is understood, however their contribution to regeneration in the postnatal period is unknown.

All of these reported cardiac stem cells are distinct from one another in their expression of surface markers. Sca-1 and c-kit double positive cells are not observed at any stage in the myocardium as they are in early hematopoiesis. Additionally, the *Isl1* population of progenitors expresses neither the c-kit nor Sca-1 surface markers, so effectively all these groups represent particular or temporally distinct populations with somewhat overlapping commitment and differentiation potential to the cardiogenic lineages. The exact lineage relationship between these adult cardiac progenitors and their embryonic cardiac precursor counter-parts is largely unknown. Nevertheless, these populations are rare and it is unlikely that they contribute major benefit as a result of regeneration and proliferation in ischemic myocardium . The epigenetic modifications that can result from the isolation and expansion of these cells *in vitro* prior to transplantation are also of concern.

## **Models and Methods**

---

### **Flowcytometry & Cardiomyocyte Isolation**

In all four papers, evaluation and purification of cardiomyocytes is investigated by FACS analysis, and thus this platform was instrumental to all the studies. Flowcytometry is a powerful tool for cellular analysis allowing us to recognize populations and subpopulations of cells within a tissue based on the detection of fluorescently conjugated antibodies to surface or intracellular markers. The cellular structure, rigidity and composition of the heart make it a troublesome target for cytometric analyses. The presence of multiple classes of gap junctions and cell adhesion molecules do not facilitate the dissociation of the heart to a single cell suspension. We have invested considerable energy in optimizing the FACS of cardiomyocytes and their subsequent purification. Single cell suspension of cardiac tissue was achieved by several rounds of enzymatic dissociation with Liberase Blendzyme 3 (Roche) or with collagenase IV. In paper II we have purified human cardiomyocytes from cardiac biopsies and their nuclei, and in papers I, III and IV we have isolated myocytes from both wild type and transgenic mouse models.

The potential for cardiac cells to form aggregates or doublets which have not dissociated in entirety or which form conglomerates in suspension prior to FACS is a reality of cardiac cell population FACS. These 'hitch-hiking' cells could potentially scew analyses, particularly for the sensitive microarray analysis in papers I and IV. Therefore we operated a stringent doublet discrimination strategy as described previously<sup>186</sup>. Many cardiomyocytes in the late neonatal and adult periods are binucleated and it is difficult to distinguish a binucleated cell from two aggregating mononucleated cells (of which one could be a non-cardiomyocyte) in the flowcytometer. Singlet cardiomyocytes were defined as a function of forward scatter width (FSC-W) and forward scatter height (FSC-H). All sorts were performed on a FACS Aria with a 100µm Nozzle. The Purity of flowcytometrically sorted cardiomyocytes was confirmed by reanalyzing the sorted populations. For viable myocyte isolation cells were also stained with 7-amino actinomycin (7-AAD) to exclude dead cells. We also include several lineage specific antibodies allowing non-myocyte depletion including PECAM-1 (pan-endothelial), CD45 (pan-haematopoietic) and PDGFR $\beta$  (fibroblast and smooth muscle specific), in this way we can further enrich for the cardiomyocyte lineage.

### **Validation**

We have used the FACS platform extensively to purify cardiomyocytes and their nuclei from mouse (papers I, III and IV) and human (paper I). The purity and specificity of all these isolations have been substantiated by other, complimentary methods. In paper II, the isolation of human cardiomyocyte nuclei by flowcytometry was verified by western blot for cardiomyocyte-specific transcription factors *Nkx2.5* and *GATA4* and cardiac specific structural proteins. It was demonstrated that these nuclei could be isolated with great sensitivity even when mixed with nuclei preparations from other tissues. In papers I and III we isolated both fixed (paper III) and viable cardiomyocytes (papers I

and III) from mouse hearts. Re-analysis was performed by FACS and immunohistochemistry for cardiac specific markers. In papers I, III and IV we have also validated the FACS isolations by molecular analysis with QPCR.

### **Human heart tissue**

To establish the kinetics of cardiomyocyte renewal, extensive human myocardial tissue was procured from cases admitted during the period 2005-7 to the Department of Forensic Medicine, Karolinska Institutet, after receiving consent from relatives and ethical permission from the Karolinska Institutet Ethical Committee.

### **Accelerator mass spectrometry**

Cardiomyocyte nuclei were purified by FACS based on the intra-nuclear expression of cardiac Troponin-T (cTropT) and c-Troponin-I (cTropI). Accelerator mass spectrometry (AMS) analysis was performed at the Center for Accelerator Mass Spectrometry at Lawrence-Livermore National Laboratory, California, USA. Extracted DNA from cardiomyocyte nuclei in water was transferred to quartz AMS combustion tubes, evaporated in a lyophilizer, excess copper oxide (CuO) was introduced to each sample, the air was evacuated completely, and then sealed off with a H<sub>2</sub>/O<sub>2</sub> torch. In order to completely combust all carbon to CO<sub>2</sub>, samples were then put into a 900°C furnace for 3.5 hours. The CO<sub>2</sub> evolved was purified, trapped, and subsequently reduced to graphite in the presence of an iron catalyst. CO<sub>2</sub> samples greater than 500 µg were split and the δ<sup>13</sup>C measurement was attained by stable isotope ratio mass spectrometry. All of the <sup>14</sup>C data are reported as decay corrected Δ<sup>14</sup>C<sup>187</sup>.

### **α-MHC-eGFP mouse model**

There are no surface markers which are specific to cardiomyocytes that can be exploited for their enrichment. The difficulty in isolating purified populations of viable cardiomyocytes has been remedied by the availability of transgenic mouse strains expressing cardiac specific markers under various reporter genes. In this study we used enhanced GFP-transgenic DBA mice with GFP expression driven constitutively by the α-MHC promoter to isolate viable cardiomyocytes. This strain has allowed us to isolate cardiomyocytes from different developmental time-points which were used for global gene expression analysis (papers I and IV).

### **Cell cycle analysis**

Given the issues and caveats associated with myocyte nuclear identification, we opted for a FACS based purification method and subsequent nuclei isolation, along with traditional immunohistochemical techniques. Purification of cardiomyocytes lessened the subjectivity associated when attempting to score adult cardiomyocyte DNA synthesis. We developed a reliable assay of cardiomyocyte FACS based analysis, whereby we could successfully eliminate the subjective aspects of cardiomyocyte nuclear identification. To monitor cardiomyocyte cell division mice were injected with the thymidine analog bromodeoxyuridine (BrdU) (paper I). BrdU is incorporated during

DNA synthesis in dividing cells. Immunohistochemistry allows detection of cells that have undergone DNA synthesis during the period in which BrdU is administered and present in the system of the animal. FACS was also used as a method for BrdU detection in cardiomyocyte nuclei. Mice were injected with 50mg/kg i.p. twice daily for two weeks prior to sacrifice in the case of adult time-points and 4 hours prior to sacrifice for other time-points (Paper I). Ki-67, another marker of proliferation, was also assayed by FACS and immunohistochemistry.

## **Aims**

---

Heart disease results from the loss of cardiomyocytes following myocardial damage and is a leading cause of death worldwide. Stimulating the endogenous regeneration of cardiomyocytes is an attractive therapeutic strategy. There has been conflicting observations in the field pertaining to the mitotic capacity and turnover kinetics of cardiomyocytes in both mouse and human. The studies in this thesis sought to accurately establish the turnover of cardiac myocytes and to identify gene expression patterns associated with the three developmentally distinct developmental periods: fetal mitotic, neonatal hypertrophic and adult terminally differentiated cardiomyocytes. We aspired to identify key cell cycle genes with therapeutic potential and also surface markers that would facilitate non-genetically mediated isolation of cardiomyocytes for manipulation and cell therapy.

More specifically the aims were:

- Article I**      To investigate cardiomyocyte turnover in mouse hearts throughout development and the genes associated with the switch from hyperplasia to hypertrophy and binucleation.
  
- Article II**      To investigate cardiomyocyte turnover in human hearts
  
- Article III**     To investigate a non-genetic method to isolate fetal cardiomyocytes based on surface marker expression
  
- Article IV**     To investigate potential surface markers for the isolation of developmentally distinct populations of cardiomyocytes

## Summary and discussion of articles

---

### Article I

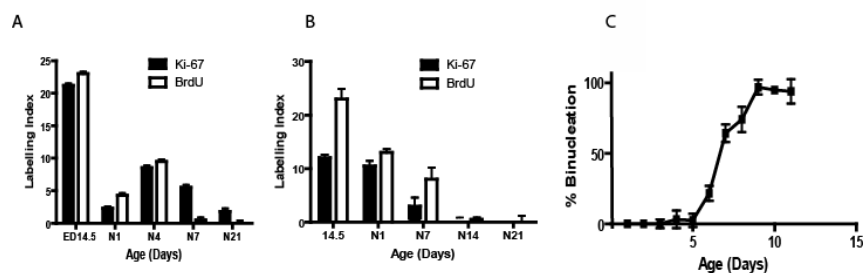
#### Cardiomyocyte cell cycle control and growth estimation *in vivo* – an analysis based on cardiomyocyte nuclei

##### Rationale

Adult mammalian cardiomyocytes are traditionally viewed as being permanently withdrawn from the cell cycle. While some groups have reported none, others have reported extensive mitosis in adult myocardium under steady state conditions. Recently a highly specific assay of  $^{14}\text{C}$  dating in humans has suggested a continuous generation of cardiomyocytes in the adult, albeit at a very low rate. Mice represent the most commonly used animal model for these studies but its short life-span make it unsuitable for  $^{14}\text{C}$  studies. Herein we investigate the cellular growth pattern for murine cardiomyocyte growth under steady-state conditions, addressed with new analytical and technical strategies and furthermore relate this to gene expression patterns.

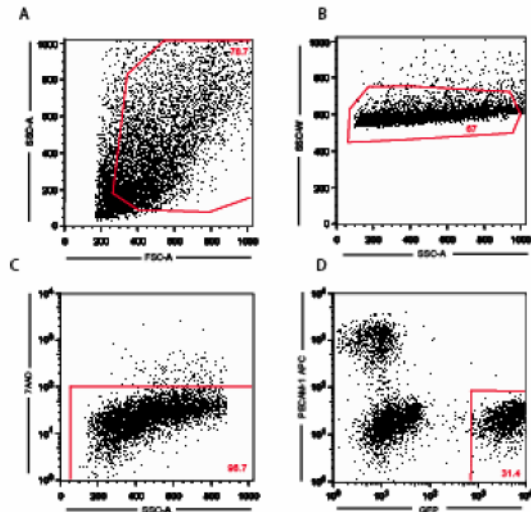
##### Results

To address the proliferative capacity of cardiomyocytes in the heart, we performed nuclei isolation on purified populations of myocytes and subsequently FACS analysis with BrdU and 7-amino actinomycin (7-AAD) staining. No detectable BrdU-positive nuclei were observed in adult myocardium suggesting that cardiomyocyte DNA synthesis completely ceases around the 3 week time point in mouse left ventricular tissue. Myocyte turnover was also assessed by measuring the fraction of Ki-67<sup>+</sup> nuclei, by three weeks of age no proliferative activity was observed. The frequency of cardiomyocyte nuclei determined to be in the cell cycle was congruous regardless of the proliferation marker assessed by FACS (Fig. 4A). Proliferation was undetectable after 21 days indicating terminal differentiation and cell cycle inhibition. These frequencies were also compared to traditional immunohistochemical techniques.



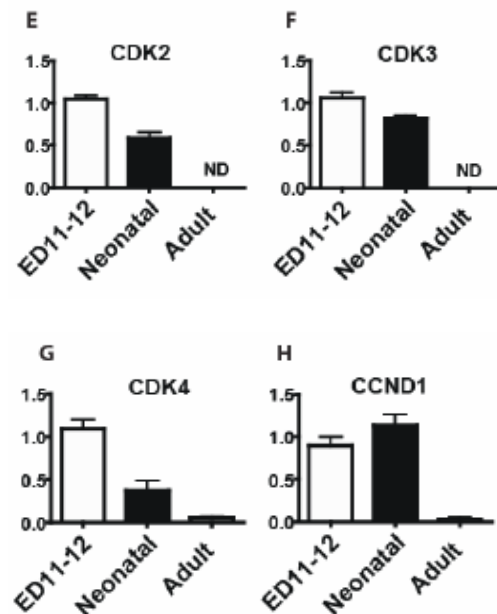
**Figure 4. Cell cycle kinetics** Comparison of Bromodeoxyuridine (BrdU) labeling and Ki-67 staining of isolated myocyte nuclei by FACS (A). ED14.5 and IHC (B) and binucleation index of cardiac myocytes (C). Data represented as mean  $\pm$  SD.

We isolated viable myocytes from eGFP-transgenic mice with GFP expression driven by the cardiomyocyte  $\alpha$ -MHC promoter, allowing us to examine the gene expression patterns between cardiomyocytes of embryonic, neonatal and adult origin (**Fig. 5A-D**).



**Figure 5. Isolation of viable cardiomyocytes.** Cardiomyocytes were labeled in the hearts of  $\alpha$ -MHC-EGFP transgenic mice, which were isolated by flow cytometry. Flowcytometry profiles of neonatal transgenic myocardium single cell preparation. Size gating (**A**); doublet discrimination (**B**) viability staining with 7AAD (**C**). EGFP<sup>+</sup> CD31<sup>neg</sup> population was sorted (**D**).

Based on the raw microarray data, a gene list was generated, whereby embryonic, neonatal and mature cardiomyocyte stage specific genes were identified. Our microarray confirmed that several cell cycle regulators are differentially expressed - adult cardiomyocytes differ from their neonatal and fetal counterparts in that *CDK2* (**Fig. 6E**), *CDK3* (**Fig. 6F**) and the cyclin *D1/CDK4* complex(**Fig. 6G-F**), are solely down-regulated in adult cardiomyocytes.



**Fig 6. Cell cycle control in neonatal cardiomyocytes** Quantitative RT-PCR data of indicated genes in FACS-sorted cardiomyocytes from embryonic (ED11-12), neonatal (N3-4) and adult (10 weeks) time-points. All data were normalized to the expression of GAPDH and  $\beta$ -actin housekeeping genes. Expression levels in embryonic cardiomyocytes was set to 1 as reference. Results represent mean (SEM) values from two independent experiments, with PCR analysis in each experiment performed in triplicates. ND = no detectable expression after 45 cycles of PCR.

Several G1/S transition regulators were expressed during neonatal development, coupled with the down-regulation of key kinetochore structural proteins necessary for completion of mitosis, specifically the down-regulation of anillin. These expression patterns were synchronous with G2/M modulators *E2F1* (Fig. 6J) and *WEE1* (Fig. 6K), evidence of a complex multi-gene checkpoint control of cytokinesis during the switch from hyperplasia to hypertrophic growth during neonatal cardiomyocyte development.

## Discussion

Cardiomyocyte turnover during development has been a major issue of dispute. In this study we attempted to reconcile the diametrically opposed findings of myocyte kinetics in the mouse. While some groups have reported none, others have reported extensive myocyte turnover in the adult rodent heart<sup>125</sup>. One of the major methodological caveats in the assessment of myocyte turnover has been the correct identification of cardiomyocytes, or more specifically the nuclei of cardiomyocytes. This is evident by the many opposed findings obtained by the same method in the same species. Many assays to establish myocyte mitotic activity have relied heavily on traditional immunohistochemical techniques utilizing both BrdU and Ki-67. Although BrdU immunohistochemistry has advantages, it also has many defects which potentially result in erroneous conclusions<sup>188</sup>. As BrdU is not an indicator of cell division *per se*, but of DNA synthesis, mitotic evaluation by independent means must be demonstrated. Although Ki-67 is a reliable marker of mitosis because it is expressed, albeit at different levels, throughout all stages of the cell cycle, there remains the identity crisis of the cardiomyocyte.

Microscopic artefacts are potentially misleading when attempting to evaluate cardiomyocyte nuclei in histologic sections and utilizing markers for DNA synthesis/mitosis is somewhat problematic when analyzing cell populations that exhibit exceptionally low proliferative activity. Herein we re-evaluated the findings of earlier studies, with the intention of improving the specificity of the estimates of cardiomyocyte kinetics. The most specific marker of cardiomyocytes is the cardiac isoform of Troponin-T, which was exploited for the FACS based purification of cardiomyocyte populations and subsequent nuclei analysis with proliferation markers. This approach allowed us to eliminate many of the subjective aspects of cardiomyocyte nuclei identification. We observed no DNA synthesis or mitotic activity in the cardiomyocytes of mice after the third postnatal week. Our results support the hypothesis that there is no DNA synthesis in adult murine cardiomyocytes under normal physiological conditions.

Cardiomyocyte DNA synthesis in the early postnatal period was predominantly associated with binucleation and acytokinetic mitosis during the period of hypertrophic growth. This rapid switch from hyperplasia to myocyte hypertrophy provided the natural model in which to examine the molecular regulation and mechanisms that govern cell proliferation and hypertrophy. We generated a transcriptional profile for hyperplastic, hypertrophic and adult myocytes that encompasses stage-specific and stage-independent markers for these developmentally distinct populations. Gene



analyses identified 32 genes whose expression was predicted to be unique to day 3-4 neonatal myocytes, compared to embryonic or adult cells. Several key genes central to the processes of binucleation and polyploidy were identified including the kinetochore protein anillin and microtubule interacting protein *TACC2* which were differentially expressed at the neonatal period. These genes could be potential candidates for manipulation and induction of proliferation in a therapeutic setting.

## *Article II*

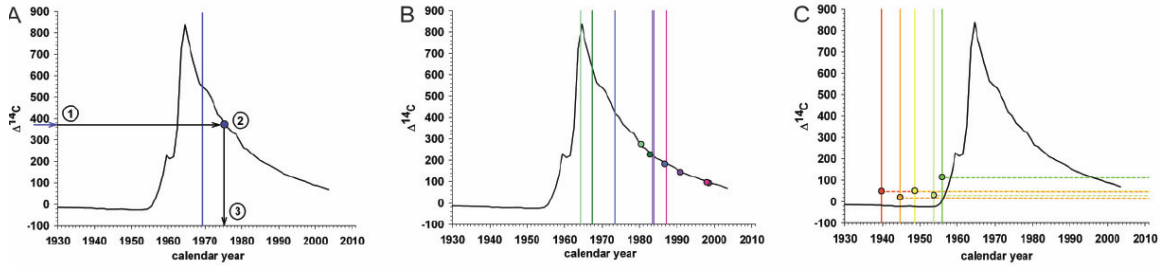
### **Cardiomyocyte renewal in humans**

#### **Rationale**

It has been difficult to establish whether there is any significant cardiomyocyte turnover after birth in humans or if cardiomyocytes are generated also later in life. We have taken advantage of the integration of  $^{14}\text{C}$ , generated by nuclear bomb tests during the Cold War into DNA to establish the age of cardiomyocytes in humans.

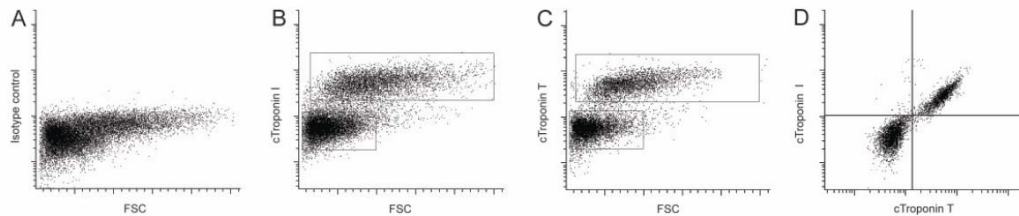
#### **Results**

We first carbon dated heterogeneous left ventricle myocardial cells, including cardiomyocytes and other cell types, to determine the extent of postnatal DNA synthesis in the healthy human heart. DNA was extracted and  $^{14}\text{C}$  levels measured by accelerator mass spectrometry. The cellular birth dates can be inferred from determining at what time the sample's  $^{14}\text{C}$  level corresponded to the atmospheric levels (**Fig. 1A**).  $^{14}\text{C}$  levels from all individuals born around or after the nuclear bomb tests corresponded to atmospheric levels several years after the subjects' birth (**Fig. 1B**), indicating substantial postnatal DNA synthesis. Analysis of individuals born before the period of nuclear bomb tests allows for sensitive detection of any turnover after 1955, due to the dramatic increase in  $^{14}\text{C}$  levels. In all studied cases (born up to 22 years before the onset of the nuclear bomb tests),  $^{14}\text{C}$  concentrations were elevated compared to the pre-nuclear bomb test levels (**Fig. 1C**). Thus, DNA is synthesized many years after birth, indicating that cells in the human heart do renew into adulthood.



**Figure 1. Cell turnover in the heart** (A) Schematic figure demonstrating the strategy to establish cell age by  $^{14}\text{C}$  dating. The black curve in all graphs shows the atmospheric levels of  $^{14}\text{C}$  over the last decades (data from  $^{189}$ ). The vertical bar indicates the date of birth of the individual. The measured  $^{14}\text{C}$  concentration (1) is related to the atmospheric  $^{14}\text{C}$  level by using the established atmospheric  $^{14}\text{C}$  bomb curve (2). The average birth-date of the population can be inferred by determining where the data point intersects the x-axis (3).  $^{14}\text{C}$  levels in DNA of cells from the left ventricle myocardium in individuals born after (B) or before (C) the nuclear bomb tests correspond to times points substantially after the time of birth, indicating postnatal cell turnover. The vertical bar indicates the date of birth of each individual and the similarly colored dots represents the  $^{14}\text{C}$  data for the same individual. For individuals born before the increase in  $^{14}\text{C}$  levels, it is not possible to directly infer a time point as the measured level can be a result of incorporation during the rising and/or falling part of the atmospheric curve, why the level is indicated by a dotted horizontal line.

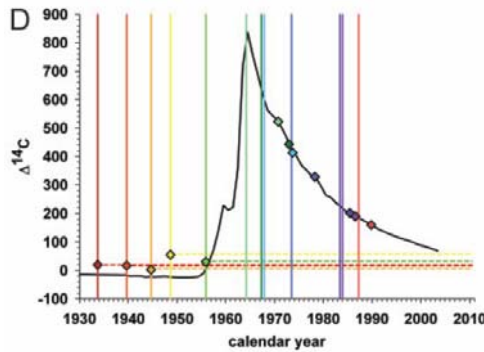
We developed a strategy to isolate cardiomyocyte nuclei by flow cytometry. We found that the well characterized cardiomyocyte specific proteins cardiac troponin I and cardiac troponin T have evolutionarily conserved nuclear localization signals and are partly localized in the nuclei of cardiomyocytes (**Fig. 2**)



**Figure 2. Isolation of cardiomyocyte nuclei** (A-C) Flow cytometric analysis of cardiomyocyte nuclei from the left ventricle of the human heart with an isotype control antibody or antibodies to the cardiomyocyte specific antigens cTroponin I or T. (D) cTroponin I and T are present in the same subpopulation of heart cell nuclei.

We extracted DNA from cardiomyocyte nuclei and measured the  $^{14}\text{C}$  concentration in genomic DNA. In all individuals born before the onset of the nuclear bomb tests the  $^{14}\text{C}$  level in cardiomyocyte genomic DNA was higher than the pre-bomb atmospheric levels, demonstrating DNA synthesis after 1955. All individuals born near or after the time of the nuclear bomb tests had  $^{14}\text{C}$  concentrations in cardiomyocyte DNA corresponding to several years after their birth, indicating postnatal cardiomyocyte DNA synthesis. We

observed in individuals born after the nuclear bomb tests that the difference between the birth date of the individual and the date corresponding to the  $^{14}\text{C}$  level in cardiomyocyte DNA increased with the age of the individual demonstrating that cardiomyocyte DNA synthesis is not restricted to a limited period in childhood but continues in adulthood (Fig. 3).



**Figure 3. Cardiomyocyte turnover in adulthood**

$^{14}\text{C}$  values corrected for the physiologically occurring polyploidisation of cardiomyocytes during childhood for individuals born before and after the bomb spike, calculated based on the individual average DNA content per cardiomyocyte nuclei. The  $^{14}\text{C}$  content is not affected in individuals where the polyploidization occurred before the increase in atmospheric levels. The vertical bar indicates year of birth, with the correspondingly colored data point indicating the delta  $^{14}\text{C}$  value.

Polyploidization of cardiomyocyte DNA occurs in a well defined spatial manner during childhood<sup>190 191</sup>. By subtracting the polyploidization-associated  $^{14}\text{C}$  incorporation from the measured value in each case, we could estimate polyploidization-independent  $^{14}\text{C}$  values. Mathematical modeling of  $^{14}\text{C}$  data was performed and the best fit was found with an inverse-linear declining turnover rate (Fig. 4B), where younger cardiomyocytes were more likely than old to be replaced. This model predicts that cardiomyocytes are renewed at a rate of approximately 1% per year at the age of 20 and 0.3% at the age of 75 (Fig. 4B).

## Discussion

A highly specific isolation strategy was employed in this study which eliminated any subjective aspects of cardiomyocyte identification. Throughout human fetal life there is extensive proliferation of myocytes which slows dramatically at birth and the 30- to 50-fold increase in heart mass in adulthood<sup>192</sup> is attributable to myocyte hypertrophy and non-myocyte population proliferation. Throughout the first decade of life, DNA synthesis occurs in the absence of cell division resulting in ~25% of cardiomyocytes in the human heart becoming binucleated. Cardiomyocyte ploidy also increases throughout the first decade of life with the majority of myocyte nuclei being polyploidy. DNA from cardiomyocytes was found to be younger than the patients' chronological age through carbon-14 dating in all instances establishing that there is DNA synthesis after birth in humans.

DNA synthesis as a result of binucleation was eliminated as a source of error, as binucleation in humans is typically complete by the age of 10<sup>120</sup> and individuals who were adults at the time of nuclear testing nevertheless exhibited a turnover of myocytes. Additionally, misconceptions owing to polyploidization were addressed by sorting

cardiomyocyte nuclei based on DNA content. The  $^{14}\text{C}$  content of diploid nuclei remained younger than the patients' chronological age. Taken together we can suggest that multinucleation and polyploidization are not sufficient to explain the postnatal DNA synthesis. Through mathematical modeling we have established that the kinetics of this gradual turnover is estimated at an annual turnover of 1% in the left ventricle at the age of 20 which decreases to 0.3% at the age of 75. This study dismissed the myth that human cardiomyocyte turnover is widespread, however the fact that it occurs at all could possibly be exploited for therapeutic means and may offer targets for pharmaceutical strategies to stimulate myocyte replacement following infarction or as a complement to future cell therapies.

It is unknown if stem or progenitor cells are responsible for the new generation of cardiomyocytes after birth or if they derive from preexisting cells that re-enter the cell cycle. The origin of these cycling myocytes is difficult to establish in humans. Nuclei were purified based on the presence of mature myocyte specific proteins *cTropT* and *cTropI* and therefore immature or progenitor populations were not assessed. It is also possible that these progenitor populations are perhaps localized in a particular zone or niche within the myocardium. Nevertheless, the inherent ability of the heart to regenerate itself is insufficient for functional improvement following myocardial infarction.

The evidence presented herein also suggests that human and mouse cardiomyocytes of a similar developmental stage share common features such as neonatal polyploidisation, binucleation and growth arrest in adult. However the period of each developmental phase differs immensely between these species e.g. while the neonatal phase of binucleation and polyploidisation in humans lasts for the first decade of life this phase seems to be completed in mice within three weeks. Our studies of DNA synthesis in adult mouse cardiomyocytes could not detect proliferation above background levels suggesting that mouse data may not reflect human cell turnover. This is unsurprising given the enormous physical differences and variations in physiological requirements between the two species.

### ***Article III***

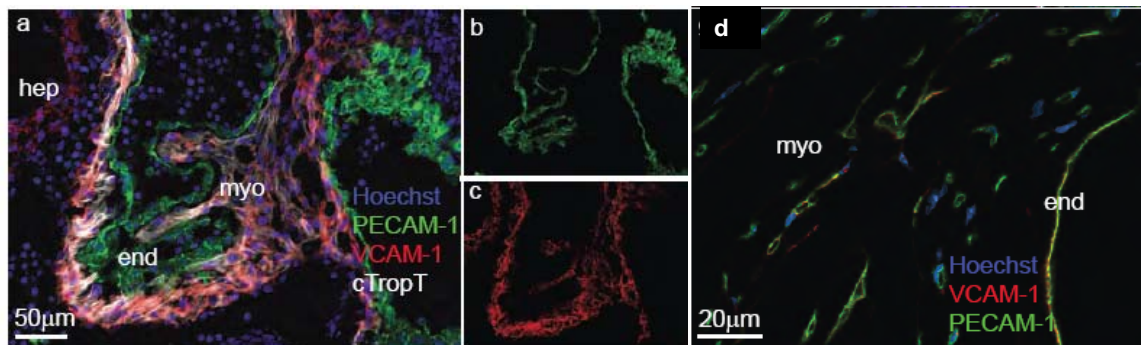
#### **Fetal cardiomyocytes are VCAM-1+ CD31- and thus can be isolated by FACS with high purity and cultured *in vitro***

##### **Rationale**

Any potential cellular therapy for heart disease involving cardiomyocytes would require the elimination of contaminating non-myocyte cells. A strategy that facilitates a non-genetic method of isolating embryonic cardiomyocytes would also be a powerful tool for the study of such cells. Cardiomyocyte purification is limited by the absence of specific surface markers or cell labeling techniques.

## Results

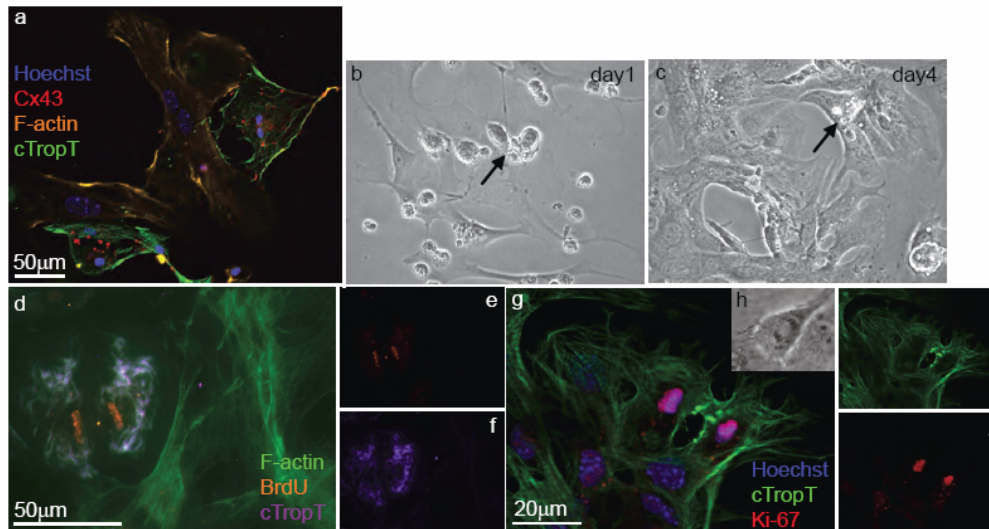
The surface marker protein VCAM-1 was identified as a potential candidate for the purification of mouse embryonic cardiomyocytes based on its expression in the developing myocardium. VCAM-1 expression was specific to the myocardium from E10.5 until E13, and was co-localized with the expression of the myocyte specific structural protein cTrop-T. VCAM-1 expression was not observed in skeletal muscle, epithelial and endothelial tissues of the developing heart (**Fig. 1**). Thereafter, beginning E14, VCAM-1 is downregulated and became undetectable in adult myocardium.



**Figure 1. VCAM-1 expression in mouse embryonic myocardium** VCAM-1 is expressed and co-localized with Troponin-T in the developing myocardium at E10.5, but not with endothelial tissue (a-c). Conversely in the adult heart, VCAM-1 expression was observed with endocardium and vascular endothelium (d)

After enzymatic cardiac dissociation, VCAM-1 was used to purify viable embryonic cardiomyocytes by FACS, and by this method >97% of VCAM-1<sup>+</sup> PECAM-1<sup>-</sup> sorted cells from E10.5-E11.5 embryos were also cTropT positive upon reanalysis. We sorted cells from embryonic hearts at E10-11 due to the limitation of cell number at E9 (where VCAM-1 expression is highest) and lower specificity due to downregulation at E12. Sorted cells were cultured and expression of cardiac specific structural markers and transcription factors was confirmed including  $\alpha$ -MHC, BNP, MLC2a and ML2v and NKX2-5 and MEF2c. Cultured cells also began beating. These biological observations were also confirmed by patch clamping to demonstrate the physiological functionality and integrity of these sorted embryonic cardiomyocytes.

Additionally we sought to develop a culture method for these sorted cells that would allow their expansion *in vitro*. We subsequently improved the traditional culture techniques of mouse cardiomyocytes by seeding sorted cells on pre-plated irradiated embryonic cardiac fibroblasts or gelatin. Fibroblasts have been shown to be essential for cardiomyocyte proliferation<sup>193</sup>. Cultured VCAM-1<sup>+</sup> cardiomyocytes could be expanded *in vitro* and were mitotically active as identified by BrdU and Ki-67 cell proliferation assays (**Fig. 6**). Beating myocytes co-cultured with irradiated fibroblasts could be kept in culture for 15 days which has not previously been reported for mouse cardiomyocytes.



**Figure 6. Sorted embryonic cardiomyocytes proliferate in co-culture with irradiated embryonic fibroblasts** Sorted cells after 4 days in culture expressing myocyte specific markers Connexin 43 and cardiac Troponin-T (a-c). Sorted cells were mitotically active as assessed by BrdU incorporation and Ki-67 expression *in vitro* (d-j).

## Discussion

In this study a novel non-genetic surface marker based purification method was established for embryonic cardiomyocytes. By FACS sorting based on the expression VCAM-1 we achieved an enriched fraction of cardiomyocytes with greater than 97% purity. These sorted cardiomyocytes were viable, mitotically active and functionally adept, expressing myocyte specific markers. This purification method is not dependent of a reporter system and allows the enrichment of wild-type fetal cardiomyocytes by surface marker expression. VCAM-1 expression is co-localized with cTropT at the embryonic time-point and not in the endothelium. However, in the neonatal period there is a change in expression and VCAM-1 becomes widely expressed in the endothelium in the late neonatal period into adulthood where once it was absent. It is unknown when this switch in endothelial VCAM-1 expression occurs.

Sorted VCAM-1<sup>+</sup> PECAM-1<sup>-</sup> cells from fetal hearts formed beating colonies when seeded on gelatin and embryonic cardiac fibroblast feeders. This technique will be a valuable tool for utilizing populations of fetal cardiomyocytes for cell culture, genetic manipulation, RNA or protein expression assays. These cells were also rapidly expanded *in vitro* co-culture with embryonic irradiated fibroblasts as feeder cells for up to two weeks. This is a reliable, reproducible method for the isolation of embryonic cardiomyocytes. VCAM-1 expression was highest from E9-E12 but lower as development proceeds beyond E13.

VCAM-1 was also utilized to isolate cardiomyocytes from ESC colonies, although some PECAM-1 positive cells also expressed VCAM-1, perhaps representing immature

mesenchymal cells or other undifferentiated cell types. ES cells represent an ideal stem cell source for *ex vivo* generation and expansion of cardiomyocytes, however, studies are still required to assess the long-term teratoma potential and tumour-free engraftment. The major challenge for the clinical development of ES cell-derived cardiomyocytes has been the development of safe and efficient methods for cellular enrichment *in vitro*. This simple isolation technique should prove useful as a non-genetic method for enrichment and facilitate further investigation. Cellular replacement approaches with these FACS isolated cardiomyocytes will have to be assessed, and if possible co-transplantation with cardiac fetal fibroblast is a prospective therapy for myocardial infraction.

## *Article IV*

### **Identification of cardiomyocyte and progenitor populations with cell surface markers: a comparison of fetal, neonatal and adult cardiomyocytes**

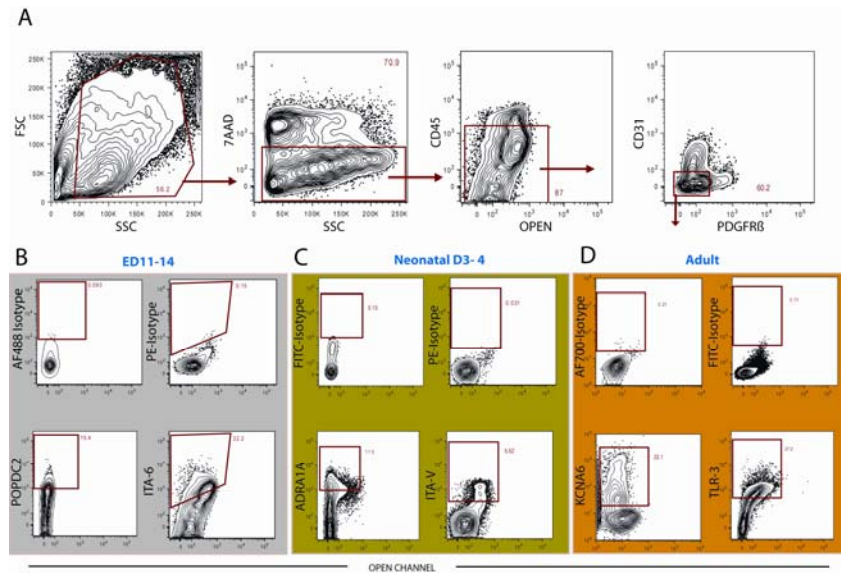
#### **Rationale**

This study sought to fish and investigate surface markers for the isolation of cardiomyocyte populations and discern any variations in cardiomyocyte lineages during the process of maturation and differentiation. We combined transcriptional profiling of cardiomyocytes from distinct developmental stages, fetal, neonatal and adult with immunocytological assays to identify membrane markers for the enrichment and potential characterization of myocyte populations.

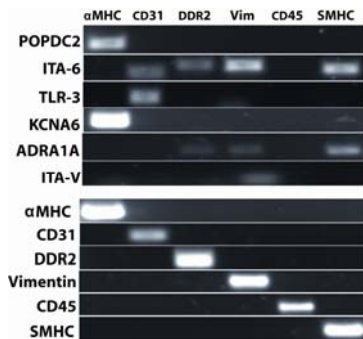
#### **Results**

Previously we isolated viable myocytes from eGFP-transgenic mice with GFP expression driven by the cardiomyocyte  $\alpha$ -MHC promoter, allowing us to examine the gene expression patterns between cardiomyocytes of embryonic, neonatal and adult origin<sup>119</sup>. Embryonic, neonatal and mature cardiomyocyte stage specific genes were identified. Genes were clustered by cellular location as biological description in Gene Ontology (GO). 118 embryonic 152 neonatal and 239 adult membrane associated markers highly enriched for the presence of membrane targeting motifs including signal peptide and /or transmembrane domain were identified.

We identified commercially available antibodies and performed immunofluorescence staining on frozen cardiac tissue to verify these candidate surface markers were co-localized with cardiac specific proteins cTropT. We observed clear evidence of surface expression of novel markers by immunohistochemistry. We subsequently investigated if we could isolate cardiomyocyte populations based on the expression of these surface markers by FACS (**Fig. 5**). Candidate markers from each developmental time-point were combined with lineage markers for the endothelial, hematopoietic, fibroblast and smooth muscle lineages and populations sorted for re-analysis and validation by molecular means.



**Figure 5. Fluorescence-activated cell sorting (FACS) analysis of a subset of potential cardiomyocyte surface markers identified in this study.** Single cell cardiac preparations from fetal (ED11-14.5), neonatal day 3-4 and adult (10 weeks) were stained with antibodies against CD45, CD31 and PDGFR $\beta$  constituting the major mature cardiac lineage markers. Cell preparations were also stained with 7-AAD and only live cells sorted. Based on this phenotypic analysis viable cells which were lineage negative enriched (CD45<sup>neg</sup> PDGFR $\beta$ <sup>neg</sup> CD31<sup>neg</sup>) were defined (A) and cellular subsets were sorted based on the expression of candidate surface markers for each time-point. Surface marker sorting based on isotype controls (top panels B-D) and sorting profiles (bottom panels B-D). Flow cytometric profiles are representative of more than 3 individually stained cardiac preparations.



**Figure 6. Gene expression analysis of sorted cell fractions with candidate surface markers.**

Indicated cell types were bulk sorted based on surface marker expression directly into lysis buffer. RNA was extracted from sorted cardiac populations POPDC2, ITA-6, TLR3, KCNA6, ADRA1A and ITA-V and subjected to quantitative RT-PCR for myocyte specific structural protein  $\alpha$ MHC, endothelial marker CD31, fibroblast marker DDR2, fibroblast and smooth muscle specific protein Vimentin *Vim*, pan-hematopoietic marker CD45 and smooth muscle specific SSMHC. Agarose gel electrophoresis of RT-PCR products (**Top Panel**). RNA from embryonic heart tissue was used as control (**bottom panel**).



The popeye domain containing 2 (*POPDC2*) and the potassium voltage-gated channel subfamily A member 6 (*KCNA6*) antibodies appeared to effectively isolate myocyte populations when combined with other lineage excluding antibodies (**Figure 6 top panel**). Both of these isolated fractions were negative for CD31, DDR2, vimentin, CD45 and SMHC contamination according to our RT-PCR analysis.

Other candidate markers proved inadequate for the purification of cardiomyocytes, despite the lineage exclusion strategy implemented when FACS sorting. *ITA-6*, *TLR-3*, *ADRA1A* and *ITA-V* sorted populations were found to be deficient in myocyte specific  $\alpha$ MHC but other lineage markers were abundant. (**Fig. 6**). *ITA-6* and *TLR-3* were both positive for endothelial marker *CD31* and both *ITA-6* and *ADRA1A* were positive for several lineage markers including fibroblast, and smooth muscle lineages. This perhaps demonstrates the variability of surface marker retention following enzymatic dissociation of tissue and the sensitivity of the antibodies used in this study.

## Discussion

We have identified a core set of genes that mark cardiomyocytes and determined the cell surface marker subset by gene annotation and in doing so isolated several novel myocyte markers that could potentially be utilized in the purification or isolation for therapeutic treatments. This study we hope, will expand the potential antigens that can be utilized to differentiate myocytes from non-myocytes and cardiac progenitors from mature differentiated myocytes. Surface marker expression forms the basis for characterization and isolation of many mature and progenitor and or stem types. Herein we combine immunotranscriptional profiling of purified populations of embryonic, neonatal and adult cardiomyocytes to fish genes encoding potential surface marker proteins.

We have profiled several potential surface markers for developmentally distinct subsets of myocytes and tested commercially available antibodies by immunohistochemical screening. Several antibodies that appeared to be co-localized with cardiac specific markers such as cTropT in frozen sections were often less suitable for FACS analysis and/or sorting. Frequently there was absence of correlation between transcriptional profiles and protein levels as detected by IHC and FACS. Following the FACS sorting of candidate populations after major myocardial lineage exclusion of endothelial, hematopoietic and fibroblastic cell types, bulk sorting purity and identity of populations was by verified by RT-PCR. Of all the surface markers assayed to date, only two proved capable of myocyte isolation from a heterogenous myocardial cell population. The embryonic marker *POPDC2* fraction and the adult marker *KCNA6* fraction were free of contamination of other lineages when assessed by RT-PCR. Nevertheless, further morphological and physiological parameters of these populations will have to be investigated to confirm our findings. It would be of interest to investigate the culture potential of these fractions and if they can be expanded *in vitro*. A number of these

markers may prove useful in isolating embryonic myocytes and removing these from ESC culture.

Current work is focused on screening additional antibodies to other putative cardiomyocyte surface markers identified in this study, and should hopefully deliver a resource that may be used in a variety of applications.

## Sammanfattning på Svenska

---

Hjärtsjukdom som orsakas av skador på hjärtmuskelceller är en av de vanligaste dödsorsakerna världen över. En framtida önskvärd behandling vore att kunna stimulera kroppens egna förmåga att återskapa hjärtmuskelceller, eller att isolera hjärtmuskelceller framställda i cellkultur.

Arbete I är fokuserat på studier rörande tillväxtmönstret hos hjärtmuskelceller under normala förhållanden hos möss. Graden av nybildning och omsättning av hjärtmuskelceller fastlogs exakt och genuttryck specifika för olika tidpunkter i hjärtats utveckling identifierades. Resultatet visade att det inte fanns någon signifikant nybildning av hjärtmuskelceller i hjärtat på vuxna djur.

I arbete II fokuseras studierna på omsättningen av hjärtmuskelceller hos människa. Här har vi kunnat dra fördel av den inkorporering av radioaktivt kol ( $^{14}\text{C}$ ) i kromosomalt DNA som inträffade under kalla krigets provsprängningar med atomvapen. Denna radioaktiva inmärkning gjorde det möjligt att exakt mäta åldern på hjärtmuskelceller hos människor. Matematiskt kunde vi bestämma att hjärtmuskelceller förnyades med en frekvens på ungefär 1% per år vid 20 års ålder och 0.3% vid 75 års ålder.

I arbete III och IV ligger fokus på att utveckla strategier för att isolera embryonala (III och IV) eller mer utmognade (IV) hjärtmuskelceller. Vi har upprättat en genetiskt oberoende FACS-baserad teknik där ytmarkören VCAM-1 används för att rena fram tidiga embryonala hjärtmuskelceller (III). Ytterligare ytmarkörer undersöks för deras potential att kunna definiera och isolera hjärtmuskelceller även från andra tidpunkter (IV).

Den här avhandlingen tillför ny kunskap inom forskning som rör kinetik och celledelning hos hjärtmuskelceller. Dessutom har vi identifierat nyckelgener som är involverade i cellcykel-kontroll av hjärtmuskelceller och som utgör potentiella kandidater för en terapeutisk behandling och manipulation. Utöver detta har vi utvecklat en genetiskt oberoende FACS-baserad isoleringsmetod för embryonala hjärtmuskelceller. För alla tänkbara cell-baserade transplantationer till ett skadat hjärta kommer det krävas att celler som inte är hjärtmuskelceller kan elimineras. En strategi där en genetiskt oberoende metod används för att rena fram hjärtmuskelceller skulle även kunna utgöra ett viktigt redskap för att studera dessa celler.

## Achoimre Gaeilge

---

Tá galar chroí mar an bpríomh chúis bhás sa domhan, agus tarlaíonn sé nuair atá damáiste miócairdeach déanta agus cailiú cill na chroí, na ‘cardiomyocytes’. Is feidir linn an damáiste a cheartú tríd na cardiomyocytes a spreagadh le atghinúint a dhéanamh, nó foinse *in vitro* a úsáid chun iad a ionadú. Tá na dhá straitéis seo an suimiúil le teiripí nua a aimsiú. Chun na teiripí seo a chuir chun cinn, rinne muid iniúchadh in san athnuachan i cardiomyocytes a dtarlaíonn i gcroí luch sutha, nuabherithe agus fásta. Fuair muid amach nach dtarlaíonn athnuachan cardiomyocytes i gcroí luch in aon chur. I gcroí daoine, d’aimsigh muid go dtarlíonn a lán athnuacha i gcroí suthach, ach go laghdaíonn sé seo de réir a chéile i rith an tsaoil. Léirigh muid go ndéanann cardiomyocytes i gcroíthe daoine fásta athnuacha.

Rinne muid iarracht na comhartaí atá tabachtach san athnuachan i cardiomyocytes a aimsiú. Bhain muid úsáid as luch géiniteach atá na cardiomyocytes ag leiriú GFP. Bhí muid in ann na cardiomyocytes a aonrú agus rinne muid ‘micro-array’ orthu, chun comhartaí géiniteach a aimsiú atá riachtanach le athnuachan a dhéanamh chun an bpróiseis ina gcáilíonn cill suthach an cumas athnuachan agus iad ag fás a tuiscint. D’aimsigh muid cúpla géin atá tabhachtach dun phróiseis seo agus is feidir a shaothrú chun teiripí nua a aimsiú.

Cuardaigh muid suaitheantais seachtracha ar cardiomyocytes gur feidir a úsáid chun iad a aonrú as daonra measctha, gan úsáid a bhaint as suaitheantas géiniteach, mar is gnáth. D’aimsigh muid gur suaitheantas seachtrach iontach é VCAM-1 le cardiomyocytes a aonrú. Tabharann an tráchtas seo eolas nua don réimse miócairdiach. Aon teiripí nua do galar croí atá chun an chroí a dheisiú, beidh modh le cardiomyocytes a aonrú riachtanach. Cuireann an eolas seo ar fail modh nua le taighde a dhéanamh ar cardiomyocytes, gan úsáid a bhaint as modhanna géiniteach.

## **Articles Not Included in this Thesis**

---

**Walsh S**, Nygren J, Pontén A, Fleischmann B.K, Jovinge S. Bone marrow contribution to non-haematopoietic lineages in a  $W^{41}/Dmd^{mdx}$  deficient mouse model. 2009.  
Manuscript

Ariane Tormin, Jan Claas Brune, **Stuart Walsh**, Johan Richter, Xiaolong Fan, Stefan Scheduling  
CD146 Expression in Primary Bone Marrow MSC Progenitor/Stem Cells is Dependent on their In Situ Location  
Submitted

## Acknowledgments

---

Many people have contributed to the contents of this thesis. Many others have contributed more to my life outside the lab and my time in Lund. I will forget to mention many, just give me the stink-eye in the corridor or send me a horse's head. Stefan – Thank you for your support, mentorship and for keeping me on track down through the years. Also your enthusiasm for the projects, humour and scientific knowledge. Your door was always open (except when the orange sign was hanging outside) and despite being an *extremely* busy person, always finding time to discuss opportunities or problems (even at ridiculous hours of the morning or covertly on family vacations). I have enjoyed my time in the Jovinge group. Also thanks to my co-supervisor Sten-Eirik for your enthusiasm, feedback and opportunities to develop my FACS knowledge early in my PhD-training. Thanks to the Frisén group for exciting collaboration and also to Bernd Fleischmann for collaborative efforts and feedback. Jens, for introducing the cryotome into my life and showing me the ropes when I first arrived. Annica, my long term office mate, mentor and friend. I have learned many things from you, ranging from the complications associated with childbirth, QPCR, motorcycle maintenance and the dangers of badminton. Thanks also for all the comments and suggestions, despite being ridiculously busy yourself. I'll buy you an Irish coffee. Eugenia, for orchestrating all the murine sexual relationships; panic inducing sms in the mornings informing me 'you do know we have a lab meeting?'; I know you were often tempted to do this even when we had no meetings. Also taking care of the ordering and generally thinking of things before I do. Jessica, for all the help, endless patience and hours and hours spent compensating and chatting at the LSR or overdosing on flowjoe. I doubt you will ever accept a lift on the back of my bike again. You will be doing all this yourself soon! Susanne for brief but informative adventures into ESC culture, and Kumar with your magic fibroblasts, Tunak tunak and mad parties. Lillian for all your mouse help. Anna fossom, Zhi and Steina for sorting help. The unfortunate individuals who had the misfortune of sharing an office with me, Fredrick, Jenny and Karin back in the day. Also some people past and present on B10 for making lab life a little less mundane, including Kees-jan, Jen, Anna, Lina, Radler Jan, Beqs, Elvirus, Magda, Hong, Jacek, Karina, Carole, Henrik, Katja, Nina. The Brewer's Guild of Lund comprising Carlo, Don Marco and James for initiating the Mangled Badger, all the crisis meetings, crisis-drill meetings, safety meetings, preparatory crisis meetings and educational sessions. It's a shame that the guild will now scatter. Jan 'Speisnegel' for general madness and arctic fishing. Other people I hate include Shane, Heléne, Martin, Pekka, Kristian, Kalle, thanks Rob and your family in your attempts to immerse me in Swedish culture. Kicki and Märta for all advice and administrative matters. The Brazilian squash mafia for burning sausages and...squash. Finally thanks to sambo Ari for all your support, love you, you are a lucky girl. I look forward to future brews, phase II and schistosomiasis!

Skål !

## References

---

1. Rawles ME. The heart-forming areas of the early chick blastoderm. *Physiol. Zool.* 1943;16:22-42.
2. Dehaan RL. Regional organization of pre-pacemaker cells in the cardiac primordia of the early chick embryo. *J Embryol Exp Morphol.* 1963;11:65-76.
3. Stalsberg H, DeHaan RL. The precardiac areas and formation of the tubular heart in the chick embryo. *Dev Biol.* 1969;19(2):128-159.
4. Rosenquist GC. Migration of precardiac cells from their origin in epiblast until they form the definitive heart in the chick embryo. *Cardiac Morphogenesis. Proceedings of the Meeting "Selected Topics in Cardiac morphogenesis" held 1984 in Alexandria Virginia, USA, Elsevier, NY, Amsterdam, Oxford (1985).* 1985;pp. 44-54.
5. Meilhac SM, Esner M, Kelly RG, Nicolas JF, Buckingham ME. The clonal origin of myocardial cells in different regions of the embryonic mouse heart. *Dev Cell.* 2004;6(5):685-698.
6. Kelly RG, Brown NA, Buckingham ME. The arterial pole of the mouse heart forms from Fgf10-expressing cells in pharyngeal mesoderm. *Dev Cell.* 2001;1(3):435-440.
7. Sauer B, Henderson N. Site-specific DNA recombination in mammalian cells by the Cre recombinase of bacteriophage P1. *Proc Natl Acad Sci U S A.* 1988;85(14):5166-5170.
8. Soriano P. Generalized lacZ expression with the ROSA26 Cre reporter strain. *Nat Genet.* 1999;21(1):70-71.
9. Cai CL, Liang X, Shi Y, Chu PH, Pfaff SL, Chen J, Evans S. Isl1 identifies a cardiac progenitor population that proliferates prior to differentiation and contributes a majority of cells to the heart. *Dev Cell.* 2003;5(6):877-889.
10. Lawson KA, Meneses JJ, Pedersen RA. Clonal analysis of epiblast fate during germ layer formation in the mouse embryo. *Development.* 1991;113(3):891-911.
11. DeRuiter MC, Poelmann RE, VanderPlas-de Vries I, Mentink MM, Gittenberger-de Groot AC. The development of the myocardium and endocardium in mouse embryos. Fusion of two heart tubes? *Anat Embryol (Berl).* 1992;185(5):461-473.
12. Schoenwolf GC, Garcia-Martinez V. Primitive-streak origin and state of commitment of cells of the cardiovascular system in avian and mammalian embryos. *Cell Mol Biol Res.* 1995;41(4):233-240.
13. Garcia-Martinez V, Schoenwolf GC. Primitive-streak origin of the cardiovascular system in avian embryos. *Dev Biol.* 1993;159(2):706-719.
14. Tam PP, Parameswaran M, Kinder SJ, Weinberger RP. The allocation of epiblast cells to the embryonic heart and other mesodermal lineages: the role of ingression and tissue movement during gastrulation. *Development.* 1997;124(9):1631-1642.
15. Eisenberg LM. Belief vs. scientific observation: the curious story of the precardiac mesoderm. *Anat Rec.* 2002;266(4):194-197.
16. Kelly RG, Buckingham ME. The anterior heart-forming field: voyage to the arterial pole of the heart. *Trends Genet.* 2002;18(4):210-216.

17. Mjaatvedt CH, Nakaoka T, Moreno-Rodriguez R, Norris RA, Kern MJ, Eisenberg CA, Turner D, Markwald RR. The outflow tract of the heart is recruited from a novel heart-forming field. *Dev Biol.* 2001;238(1):97-109.
18. Abu-Issa R, Waldo K, Kirby ML. Heart fields: one, two or more? *Dev Biol.* 2004;272(2):281-285.
19. Jacobson AG, Sater AK. Features of embryonic induction. *Development.* 1988;104(3):341-359.
20. Herrmann BG, Labeit S, Poustka A, King TR, Lehrach H. Cloning of the T gene required in mesoderm formation in the mouse. *Nature.* 1990;343(6259):617-622.
21. Solloway MJ, Harvey RP. Molecular pathways in myocardial development: a stem cell perspective. *Cardiovasc Res.* 2003;58(2):264-277.
22. Saga Y, Miyagawa-Tomita S, Takagi A, Kitajima S, Miyazaki J, Inoue T. MesP1 is expressed in the heart precursor cells and required for the formation of a single heart tube. *Development.* 1999;126(15):3437-3447.
23. Kitajima S, Takagi A, Inoue T, Saga Y. MesP1 and MesP2 are essential for the development of cardiac mesoderm. *Development.* 2000;127(15):3215-3226.
24. Millauer B, Wizigmann-Voos S, Schnurch H, Martinez R, Moller NP, Risau W, Ullrich A. High affinity VEGF binding and developmental expression suggest Flk-1 as a major regulator of vasculogenesis and angiogenesis. *Cell.* 1993;72(6):835-846.
25. Shalaby F, Rossant J, Yamaguchi TP, Gertsenstein M, Wu XF, Breitman ML, Schuh AC. Failure of blood-island formation and vasculogenesis in Flk-1-deficient mice. *Nature.* 1995;376(6535):62-66.
26. Motoike T, Markham DW, Rossant J, Sato TN. Evidence for novel fate of Flk1+ progenitor: contribution to muscle lineage. *Genesis.* 2003;35(3):153-159.
27. Ema M, Takahashi S, Rossant J. Deletion of the selection cassette, but not cis-acting elements, in targeted Flk1-lacZ allele reveals Flk1 expression in multipotent mesodermal progenitors. *Blood.* 2006;107(1):111-117.
28. Schultheiss TM, Burch JB, Lassar AB. A role for bone morphogenetic proteins in the induction of cardiac myogenesis. *Genes Dev.* 1997;11(4):451-462.
29. Yamagishi T, Nakajima Y, Nishimatsu S, Nohno T, Ando K, Nakamura H. Expression of bone morphogenetic protein-5 gene during chick heart development: possible roles in valvuloseptal endocardial cushion formation. *Anat Rec.* 2001;264(4):313-316.
30. Ladd AN, Yatskievych TA, Antin PB. Regulation of avian cardiac myogenesis by activin/TGFbeta and bone morphogenetic proteins. *Dev Biol.* 1998;204(2):407-419.
31. Schneider VA, Mercola M. Wnt antagonism initiates cardiogenesis in *Xenopus laevis*. *Genes Dev.* 2001;15(3):304-315.
32. Qyang Y, Martin-Puig S, Chiravuri M, Chen S, Xu H, Bu L, Jiang X, Lin L, Granger A, Moretti A, Caron L, Wu X, Clarke J, Taketo MM, Laugwitz KL, Moon RT, Gruber P, Evans SM, Ding S, Chien KR. The renewal and differentiation of Isl1+ cardiovascular progenitors are controlled by a Wnt/beta-catenin pathway. *Cell Stem Cell.* 2007;1(2):165-179.



33. Andree B, Duprez D, Vorbusch B, Arnold HH, Brand T. BMP-2 induces ectopic expression of cardiac lineage markers and interferes with somite formation in chicken embryos. *Mech Dev.* 1998;70(1-2):119-131.
34. Yamada M, Revelli JP, Eichele G, Barron M, Schwartz RJ. Expression of chick Tbx-2, Tbx-3, and Tbx-5 genes during early heart development: evidence for BMP2 induction of Tbx2. *Dev Biol.* 2000;228(1):95-105.
35. Ueno S, Weidinger G, Osugi T, Kohn AD, Golob JL, Pabon L, Reinecke H, Moon RT, Murry CE. Biphasic role for Wnt/beta-catenin signaling in cardiac specification in zebrafish and embryonic stem cells. *Proc Natl Acad Sci U S A.* 2007;104(23):9685-9690.
36. Naito AT, Shiojima I, Akazawa H, Hidaka K, Morisaki T, Kikuchi A, Komuro I. Developmental stage-specific biphasic roles of Wnt/beta-catenin signaling in cardiomyogenesis and hematopoiesis. *Proc Natl Acad Sci U S A.* 2006;103(52):19812-19817.
37. Harvey RP. NK-2 homeobox genes and heart development. *Dev Biol.* 1996;178(2):203-216.
38. Cripps RM, Olson EN. Control of cardiac development by an evolutionarily conserved transcriptional network. *Dev Biol.* 2002;246(1):14-28.
39. Gajewski K, Kim Y, Lee YM, Olson EN, Schulz RA. D-mef2 is a target for Tinman activation during Drosophila heart development. *EMBO J.* 1997;16(3):515-522.
40. Lyons I, Parsons LM, Hartley L, Li R, Andrews JE, Robb L, Harvey RP. Myogenic and morphogenetic defects in the heart tubes of murine embryos lacking the homeo box gene Nkx2-5. *Genes Dev.* 1995;9(13):1654-1666.
41. Bruneau BG, Bao ZZ, Tanaka M, Schott JJ, Izumo S, Cepko CL, Seidman JG, Seidman CE. Cardiac expression of the ventricle-specific homeobox gene Irx4 is modulated by Nkx2-5 and dHand. *Dev Biol.* 2000;217(2):266-277.
42. Lien CL, McAnally J, Richardson JA, Olson EN. Cardiac-specific activity of an Nkx2-5 enhancer requires an evolutionarily conserved Smad binding site. *Dev Biol.* 2002;244(2):257-266.
43. Zaffran S, Kelly RG, Meilhac SM, Buckingham ME, Brown NA. Right ventricular myocardium derives from the anterior heart field. *Circ Res.* 2004;95(3):261-268.
44. Yuan S, Schoenwolf GC. Islet-1 marks the early heart rudiments and is asymmetrically expressed during early rotation of the foregut in the chick embryo. *Anat Rec.* 2000;260(2):204-207.
45. Ma Q, Zhou B, Pu WT. Reassessment of Isl1 and Nkx2-5 cardiac fate maps using a Gata4-based reporter of Cre activity. *Dev Biol.* 2008;323(1):98-104.
46. Wu SM, Chien KR, Mummery C. Origins and fates of cardiovascular progenitor cells. *Cell.* 2008;132(4):537-543.
47. Moses KA, DeMayo F, Braun RM, Reecy JL, Schwartz RJ. Embryonic expression of an Nkx2-5/Cre gene using ROSA26 reporter mice. *Genesis.* 2001;31(4):176-180.
48. Ema M. [Role of SCL/Tall on endothelial and hematopoietic development]. *Seikagaku.* 2003;75(11):1461-1464.

49. Masino AM, Gallardo TD, Wilcox CA, Olson EN, Williams RS, Garry DJ. Transcriptional regulation of cardiac progenitor cell populations. *Circ Res*. 2004;95(4):389-397.
50. Wu SM, Fujiwara Y, Cibulsky SM, Clapham DE, Lien CL, Schultheiss TM, Orkin SH. Developmental origin of a bipotential myocardial and smooth muscle cell precursor in the mammalian heart. *Cell*. 2006;127(6):1137-1150.
51. Zhou B, Ma Q, Rajagopal S, Wu SM, Domian I, Rivera-Feliciano J, Jiang D, von Gise A, Ikeda S, Chien KR, Pu WT. Epicardial progenitors contribute to the cardiomyocyte lineage in the developing heart. *Nature*. 2008;454(7200):109-113.
52. Goetz SC, Conlon FL. Cardiac progenitors and the embryonic cell cycle. *Cell Cycle*. 2007;6(16):1974-1981.
53. Dehaan RL. Migration patterns of the precardiac mesoderm in the early chick embryo. *Exp Cell Res*. 1963;29:544-560.
54. Abu-Issa R, Kirby ML. Heart field: from mesoderm to heart tube. *Annu Rev Cell Dev Biol*. 2007;23:45-68.
55. Reiter JF, Alexander J, Rodaway A, Yelon D, Patient R, Holder N, Stainier DY. Gata5 is required for the development of the heart and endoderm in zebrafish. *Genes Dev*. 1999;13(22):2983-2995.
56. Alexander J, Rothenberg M, Henry GL, Stainier DY. casanova plays an early and essential role in endoderm formation in zebrafish. *Dev Biol*. 1999;215(2):343-357.
57. Trinh LA, Stainier DY. Fibronectin regulates epithelial organization during myocardial migration in zebrafish. *Dev Cell*. 2004;6(3):371-382.
58. Christoffels VM, Habets PE, Franco D, Campione M, de Jong F, Lamers WH, Bao ZZ, Palmer S, Biben C, Harvey RP, Moorman AF. Chamber formation and morphogenesis in the developing mammalian heart. *Dev Biol*. 2000;223(2):266-278.
59. Manner J. On rotation, torsion, lateralization, and handedness of the embryonic heart loop: new insights from a simulation model for the heart loop of chick embryos. *Anat Rec A Discov Mol Cell Evol Biol*. 2004;278(1):481-492.
60. Shiratori H, Sakuma R, Watanabe M, Hashiguchi H, Mochida K, Sakai Y, Nishino J, Saijoh Y, Whitman M, Hamada H. Two-step regulation of left-right asymmetric expression of Pitx2: initiation by nodal signaling and maintenance by Nkx2. *Mol Cell*. 2001;7(1):137-149.
61. Campione M, Ros MA, Icardo JM, Piedra E, Christoffels VM, Schweickert A, Blum M, Franco D, Moorman AF. Pitx2 expression defines a left cardiac lineage of cells: evidence for atrial and ventricular molecular isomerism in the iv/iv mice. *Dev Biol*. 2001;231(1):252-264.
62. Lu MF, Pressman C, Dyer R, Johnson RL, Martin JF. Function of Rieger syndrome gene in left-right asymmetry and craniofacial development. *Nature*. 1999;401(6750):276-278.
63. Togi K, Kawamoto T, Yamauchi R, Yoshida Y, Kita T, Tanaka M. Role of Hand1/eHAND in the dorso-ventral patterning and interventricular septum formation in the embryonic heart. *Mol Cell Biol*. 2004;24(11):4627-4635.
64. Palmer S, Groves N, Schindeler A, Yeoh T, Biben C, Wang CC, Sparrow DB, Barnett L, Jenkins NA, Copeland NG, Koentgen F, Mohun T, Harvey RP. The small muscle-specific protein Csl modifies cell shape and promotes myocyte

- fusion in an insulin-like growth factor 1-dependent manner. *J Cell Biol.* 2001;153(5):985-998.
65. Dunwoodie SL, Rodriguez TA, Beddington RS. Msg1 and Mrg1, founding members of a gene family, show distinct patterns of gene expression during mouse embryogenesis. *Mech Dev.* 1998;72(1-2):27-40.
  66. Andree B, Hillemann T, Kessler-Icekson G, Schmitt-John T, Jockusch H, Arnold HH, Brand T. Isolation and characterization of the novel popeye gene family expressed in skeletal muscle and heart. *Dev Biol.* 2000;223(2):371-382.
  67. Leimeister C, Externbrink A, Klamt B, Gessler M. Hey genes: a novel subfamily of hairy- and Enhancer of split related genes specifically expressed during mouse embryogenesis. *Mech Dev.* 1999;85(1-2):173-177.
  68. Nakagawa O, Nakagawa M, Richardson JA, Olson EN, Srivastava D. HRT1, HRT2, and HRT3: a new subclass of bHLH transcription factors marking specific cardiac, somitic, and pharyngeal arch segments. *Dev Biol.* 1999;216(1):72-84.
  69. Pereira FA, Qiu Y, Zhou G, Tsai MJ, Tsai SY. The orphan nuclear receptor COUP-TFII is required for angiogenesis and heart development. *Genes Dev.* 1999;13(8):1037-1049.
  70. Kirby ML, Waldo KL. Neural crest and cardiovascular patterning. *Circ Res.* 1995;77(2):211-215.
  71. Manner J, Perez-Pomares JM, Macias D, Munoz-Chapuli R. The origin, formation and developmental significance of the epicardium: a review. *Cells Tissues Organs.* 2001;169(2):89-103.
  72. Chen TH, Chang TC, Kang JO, Choudhary B, Makita T, Tran CM, Burch JB, Eid H, Sucov HM. Epicardial induction of fetal cardiomyocyte proliferation via a retinoic acid-inducible trophic factor. *Dev Biol.* 2002;250(1):198-207.
  73. Pennisi DJ, Rentschler S, Gourdie RG, Fishman GI, Mikawa T. Induction and patterning of the cardiac conduction system. *Int J Dev Biol.* 2002;46(6):765-775.
  74. Lee KF, Simon H, Chen H, Bates B, Hung MC, Hauser C. Requirement for neuregulin receptor erbB2 in neural and cardiac development. *Nature.* 1995;378(6555):394-398.
  75. Brown CB, Boyer AS, Runyan RB, Barnett JV. Requirement of type III TGF-beta receptor for endocardial cell transformation in the heart. *Science.* 1999;283(5410):2080-2082.
  76. Ranger AM, Grusby MJ, Hodge MR, Gravallesse EM, de la Brousse FC, Hoey T, Mickanin C, Baldwin HS, Glimcher LH. The transcription factor NF-ATc is essential for cardiac valve formation. *Nature.* 1998;392(6672):186-190.
  77. Manasek FJ. Mitosis in developing cardiac muscle. *J Cell Biol.* 1968;37(1):191-196.
  78. Li F, Wang X, Capasso JM, Gerdes AM. Rapid transition of cardiac myocytes from hyperplasia to hypertrophy during postnatal development. *J Mol Cell Cardiol.* 1996;28(8):1737-1746.
  79. Ahuja P, Perriard E, Perriard JC, Ehler E. Sequential myofibrillar breakdown accompanies mitotic division of mammalian cardiomyocytes. *J Cell Sci.* 2004;117(Pt 15):3295-3306.
  80. Clubb FJ, Jr., Bishop SP. Formation of binucleated myocardial cells in the neonatal rat. An index for growth hypertrophy. *Lab Invest.* 1984;50(5):571-577.

81. Oparil S, Bishop SP, Clubb FJ, Jr. Myocardial cell hypertrophy or hyperplasia. *Hypertension*. 1984;6(6 Pt 2):III38-43.
82. Bettencourt-Dias M, Mittnacht S, Brockes JP. Heterogeneous proliferative potential in regenerative adult newt cardiomyocytes. *J Cell Sci*. 2003;116(Pt 19):4001-4009.
83. Poss KD, Wilson LG, Keating MT. Heart regeneration in zebrafish. *Science*. 2002;298(5601):2188-2190.
84. Schumacher JM, Golden A, Donovan PJ. AIR-2: An Aurora/Ipl1-related protein kinase associated with chromosomes and midbody microtubules is required for polar body extrusion and cytokinesis in *Caenorhabditis elegans* embryos. *J Cell Biol*. 1998;143(6):1635-1646.
85. Raemaekers T, Ribbeck K, Beaudouin J, Annaert W, Van Camp M, Stockmans I, Smets N, Bouillon R, Ellenberg J, Carmeliet G. NuSAP, a novel microtubule-associated protein involved in mitotic spindle organization. *J Cell Biol*. 2003;162(6):1017-1029.
86. Daniels MJ, Wang Y, Lee M, Venkitaraman AR. Abnormal cytokinesis in cells deficient in the breast cancer susceptibility protein BRCA2. *Science*. 2004;306(5697):876-879.
87. Field CM, Alberts BM. Anillin, a contractile ring protein that cycles from the nucleus to the cell cortex. *J Cell Biol*. 1995;131(1):165-178.
88. Petrini JH, Stracker TH. The cellular response to DNA double-strand breaks: defining the sensors and mediators. *Trends Cell Biol*. 2003;13(9):458-462.
89. Bartek J, Lukas J. Chk1 and Chk2 kinases in checkpoint control and cancer. *Cancer Cell*. 2003;3(5):421-429.
90. Agarwal ML, Taylor WR, Chernov MV, Chernova OB, Stark GR. The p53 network. *J Biol Chem*. 1998;273(1):1-4.
91. Akiyama T, Ohuchi T, Sumida S, Matsumoto K, Toyoshima K. Phosphorylation of the retinoblastoma protein by cdk2. *Proc Natl Acad Sci U S A*. 1992;89(17):7900-7904.
92. Hinchcliffe EH, Sluder G. Centrosome duplication: three kinases come up a winner! *Curr Biol*. 2001;11(17):R698-701.
93. Zhao J, Kennedy BK, Lawrence BD, Barbie DA, Matera AG, Fletcher JA, Harlow E. NPAT links cyclin E-Cdk2 to the regulation of replication-dependent histone gene transcription. *Genes Dev*. 2000;14(18):2283-2297.
94. Oren M. Regulation of the p53 tumor suppressor protein. *J Biol Chem*. 1999;274(51):36031-36034.
95. Zhang Y, Xiong Y, Yarbrough WG. ARF promotes MDM2 degradation and stabilizes p53: ARF-INK4a locus deletion impairs both the Rb and p53 tumor suppression pathways. *Cell*. 1998;92(6):725-734.
96. Owen-Schaub LB, Angelo LS, Radinsky R, Ware CF, Gesner TG, Bartos DP. Soluble Fas/APO-1 in tumor cells: a potential regulator of apoptosis? *Cancer Lett*. 1995;94(1):1-8.
97. Polyak K, Xia Y, Zweier JL, Kinzler KW, Vogelstein B. A model for p53-induced apoptosis. *Nature*. 1997;389(6648):300-305.

98. Paulovich AG, Hartwell LH. A checkpoint regulates the rate of progression through S phase in *S. cerevisiae* in response to DNA damage. *Cell*. 1995;82(5):841-847.
99. Falck J, Petrini JH, Williams BR, Lukas J, Bartek J. The DNA damage-dependent intra-S phase checkpoint is regulated by parallel pathways. *Nat Genet*. 2002;30(3):290-294.
100. Lim DS, Kim ST, Xu B, Maser RS, Lin J, Petrini JH, Kastan MB. ATM phosphorylates p95/nbs1 in an S-phase checkpoint pathway. *Nature*. 2000;404(6778):613-617.
101. Zhu Y, Alvarez C, Doll R, Kurata H, Schebye XM, Parry D, Lees E. Intra-S-phase checkpoint activation by direct CDK2 inhibition. *Mol Cell Biol*. 2004;24(14):6268-6277.
102. Downes CS, Clarke DJ, Mullinger AM, Gimenez-Abian JF, Creighton AM, Johnson RT. A topoisomerase II-dependent G2 cycle checkpoint in mammalian cells. *Nature*. 1994;372(6505):467-470.
103. Rieder CL, Schultz A, Cole R, Sluder G. Anaphase onset in vertebrate somatic cells is controlled by a checkpoint that monitors sister kinetochore attachment to the spindle. *J Cell Biol*. 1994;127(5):1301-1310.
104. Wang Y, Hu F, Elledge SJ. The Bfa1/Bub2 GAP complex comprises a universal checkpoint required to prevent mitotic exit. *Curr Biol*. 2000;10(21):1379-1382.
105. Nag AC, Healy CJ, Cheng M. DNA synthesis and mitosis in adult amphibian cardiac muscle cells in vitro. *Science*. 1979;205(4412):1281-1282.
106. Capasso JM, Bruno S, Cheng W, Li P, Rodgers R, Darzynkiewicz Z, Anversa P. Ventricular loading is coupled with DNA synthesis in adult cardiac myocytes after acute and chronic myocardial infarction in rats. *Circ Res*. 1992;71(6):1379-1389.
107. Brooks G, Poolman RA, Li JM. Arresting developments in the cardiac myocyte cell cycle: role of cyclin-dependent kinase inhibitors. *Cardiovasc Res*. 1998;39(2):301-311.
108. Brooks G, Poolman RA, McGill CJ, Li JM. Expression and activities of cyclins and cyclin-dependent kinases in developing rat ventricular myocytes. *J Mol Cell Cardiol*. 1997;29(8):2261-2271.
109. Flink IL, Oana S, Maitra N, Bahl JJ, Morkin E. Changes in E2F complexes containing retinoblastoma protein family members and increased cyclin-dependent kinase inhibitor activities during terminal differentiation of cardiomyocytes. *J Mol Cell Cardiol*. 1998;30(3):563-578.
110. Kang MJ, Koh GY. Differential and dramatic changes of cyclin-dependent kinase activities in cardiomyocytes during the neonatal period. *J Mol Cell Cardiol*. 1997;29(7):1767-1777.
111. Nevins JR. E2F: a link between the Rb tumor suppressor protein and viral oncoproteins. *Science*. 1992;258(5081):424-429.
112. Sherr CJ. G1 phase progression: cycling on cue. *Cell*. 1994;79(4):551-555.
113. Hyams JS. Cytokinesis: the great divide. *Trends Cell Biol*. 2005;15(1):1.
114. Lebart MC, Benyamin Y. Calpain involvement in the remodeling of cytoskeletal anchorage complexes. *FEBS J*. 2006;273(15):3415-3426.

115. Rumyantsev PP. Interrelations of the proliferation and differentiation processes during cardiac myogenesis and regeneration. *Int Rev Cytol.* 1977;51:186-273.
116. Fishkind DJ, Wang YL. New horizons for cytokinesis. *Curr Opin Cell Biol.* 1995;7(1):23-31.
117. Li F, Wang X, Bunger PC, Gerdes AM. Formation of binucleated cardiac myocytes in rat heart: I. Role of actin-myosin contractile ring. *J Mol Cell Cardiol.* 1997;29(6):1541-1551.
118. Engel FB, Schebesta M, Keating MT. Anillin localization defect in cardiomyocyte binucleation. *J Mol Cell Cardiol.* 2006;41(4):601-612.
119. Walsh S, Ponten A, Fleischmann BK, Jovinge S. Cardiomyocyte cell cycle control and growth estimation in vivo- an analysis based on cardiomyocyte nuclei. *Cardiovasc Res.*
120. Olivetti G, Cigola E, Maestri R, Corradi D, Lagrasta C, Gambert SR, Anversa P. Aging, cardiac hypertrophy and ischemic cardiomyopathy do not affect the proportion of mononucleated and multinucleated myocytes in the human heart. *J Mol Cell Cardiol.* 1996;28(7):1463-1477.
121. Krishnamurthy J, Torrice C, Ramsey MR, Kovalev GI, Al-Regaiey K, Su L, Sharpless NE. Ink4a/Arf expression is a biomarker of aging. *J Clin Invest.* 2004;114(9):1299-1307.
122. Subramaniam A, Jones WK, Gulick J, Wert S, Neumann J, Robbins J. Tissue-specific regulation of the alpha-myosin heavy chain gene promoter in transgenic mice. *J Biol Chem.* 1991;266(36):24613-24620.
123. Beltrami CA, Di Loreto C, Finato N, Rocco M, Artico D, Cigola E, Gambert SR, Olivetti G, Kajstura J, Anversa P. Proliferating cell nuclear antigen (PCNA), DNA synthesis and mitosis in myocytes following cardiac transplantation in man. *J Mol Cell Cardiol.* 1997;29(10):2789-2802.
124. Anversa P, Nadal-Ginard B. Myocyte renewal and ventricular remodelling. *Nature.* 2002;415(6868):240-243.
125. Anversa P, Kajstura J. Ventricular myocytes are not terminally differentiated in the adult mammalian heart. *Circ Res.* 1998;83(1):1-14.
126. Beltrami AP, Urbanek K, Kajstura J, Yan SM, Finato N, Bussani R, Nadal-Ginard B, Silvestri F, Leri A, Beltrami CA, Anversa P. Evidence that human cardiac myocytes divide after myocardial infarction. *N Engl J Med.* 2001;344(23):1750-1757.
127. Soonpaa MH, Field LJ. Survey of studies examining mammalian cardiomyocyte DNA synthesis. *Circ Res.* 1998;83(1):15-26.
128. Soonpaa MH, Kim KK, Pajak L, Franklin M, Field LJ. Cardiomyocyte DNA synthesis and binucleation during murine development. *Am J Physiol.* 1996;271(5 Pt 2):H2183-2189.
129. Kajstura J, Cheng W, Sarangarajan R, Li P, Li B, Nitahara JA, Chapnick S, Reiss K, Olivetti G, Anversa P. Necrotic and apoptotic myocyte cell death in the aging heart of Fischer 344 rats. *Am J Physiol.* 1996;271(3 Pt 2):H1215-1228.
130. Soonpaa MH, Field LJ. Assessment of cardiomyocyte DNA synthesis in normal and injured adult mouse hearts. *Am J Physiol.* 1997;272(1 Pt 2):H220-226.
131. Rakic P. Neurogenesis in adult primate neocortex: an evaluation of the evidence. *Nat Rev Neurosci.* 2002;3(1):65-71.

132. Spalding KL, Bhardwaj RD, Buchholz BA, Druid H, Frisen J. Retrospective birth dating of cells in humans. *Cell*. 2005;122(1):133-143.
133. Bergmann O, Bhardwaj RD, Bernard S, Zdunek S, Barnabe-Heider F, Walsh S, Zupicich J, Alkass K, Buchholz BA, Druid H, Jovinge S, Frisen J. Evidence for cardiomyocyte renewal in humans. *Science*. 2009;324(5923):98-102.
134. Sherr CJ, Roberts JM. Inhibitors of mammalian G1 cyclin-dependent kinases. *Genes Dev*. 1995;9(10):1149-1163.
135. Cobrinik D. Pocket proteins and cell cycle control. *Oncogene*. 2005;24(17):2796-2809.
136. Murray CJ, Lopez AD. Global mortality, disability, and the contribution of risk factors: Global Burden of Disease Study. *Lancet*. 1997;349(9063):1436-1442.
137. Buja LM, Willerson JT. Clinicopathologic correlates of acute ischemic heart disease syndromes. *Am J Cardiol*. 1981;47(2):343-356.
138. Bing RJ. Myocardial ischemia and infarction: growth of ideas. *Cardiovasc Res*. 2001;51(1):13-20.
139. Frangogiannis NG, Smith CW, Entman ML. The inflammatory response in myocardial infarction. *Cardiovasc Res*. 2002;53(1):31-47.
140. Desmouliere A, Redard M, Darby I, Gabbiani G. Apoptosis mediates the decrease in cellularity during the transition between granulation tissue and scar. *Am J Pathol*. 1995;146(1):56-66.
141. Braunwald E, Pfeffer MA. Ventricular enlargement and remodeling following acute myocardial infarction: mechanisms and management. *Am J Cardiol*. 1991;68(14):1D-6D.
142. Pfeffer MA, Braunwald E. Ventricular remodeling after myocardial infarction. Experimental observations and clinical implications. *Circulation*. 1990;81(4):1161-1172.
143. Quaini F, Urbanek K, Beltrami AP, Finato N, Beltrami CA, Nadal-Ginard B, Kajstura J, Leri A, Anversa P. Chimerism of the transplanted heart. *N Engl J Med*. 2002;346(1):5-15.
144. Jackson KA, Majka SM, Wang H, Pocius J, Hartley CJ, Majesky MW, Entman ML, Michael LH, Hirschi KK, Goodell MA. Regeneration of ischemic cardiac muscle and vascular endothelium by adult stem cells. *J Clin Invest*. 2001;107(11):1395-1402.
145. Urbanek K, Cesselli D, Rota M, Nascimbene A, De Angelis A, Hosoda T, Bearzi C, Boni A, Bolli R, Kajstura J, Anversa P, Leri A. Stem cell niches in the adult mouse heart. *Proc Natl Acad Sci U S A*. 2006;103(24):9226-9231.
146. Kajstura J, Urbanek K, Rota M, Bearzi C, Hosoda T, Bolli R, Anversa P, Leri A. Cardiac stem cells and myocardial disease. *J Mol Cell Cardiol*. 2008;45(4):505-513.
147. Caulfield JB, Leinbach R, Gold H. The relationship of myocardial infarct size and prognosis. *Circulation*. 1976;53(3 Suppl):I141-144.
148. Jain M, DerSimonian H, Brenner DA, Ngoy S, Teller P, Edge AS, Zawadzka A, Wetzel K, Sawyer DB, Colucci WS, Apstein CS, Liao R. Cell therapy attenuates deleterious ventricular remodeling and improves cardiac performance after myocardial infarction. *Circulation*. 2001;103(14):1920-1927.

149. Kocher AA, Schuster MD, Szabolcs MJ, Takuma S, Burkhoff D, Wang J, Homma S, Edwards NM, Itescu S. Neovascularization of ischemic myocardium by human bone-marrow-derived angioblasts prevents cardiomyocyte apoptosis, reduces remodeling and improves cardiac function. *Nat Med.* 2001;7(4):430-436.
150. Orlic D, Kajstura J, Chimenti S, Jakoniuk I, Anderson SM, Li B, Pickel J, McKay R, Nadal-Ginard B, Bodine DM, Leri A, Anversa P. Bone marrow cells regenerate infarcted myocardium. *Nature.* 2001;410(6829):701-705.
151. Balsam LB, Wagers AJ, Christensen JL, Kofidis T, Weissman IL, Robbins RC. Haematopoietic stem cells adopt mature haematopoietic fates in ischaemic myocardium. *Nature.* 2004;428(6983):668-673.
152. Murry CE, Soonpaa MH, Reinecke H, Nakajima H, Nakajima HO, Rubart M, Pasumarthi KB, Virag JI, Bartelmez SH, Poppa V, Bradford G, Dowell JD, Williams DA, Field LJ. Haematopoietic stem cells do not transdifferentiate into cardiac myocytes in myocardial infarcts. *Nature.* 2004;428(6983):664-668.
153. Nygren JM, Jovinge S, Breitbach M, Sawen P, Roll W, Hescheler J, Taneera J, Fleischmann BK, Jacobsen SE. Bone marrow-derived hematopoietic cells generate cardiomyocytes at a low frequency through cell fusion, but not transdifferentiation. *Nat Med.* 2004;10(5):494-501.
154. Kolossov E, Bostani T, Roell W, Breitbach M, Pillekamp F, Nygren JM, Sasse P, Rubenchik O, Fries JW, Wenzel D, Geisen C, Xia Y, Lu Z, Duan Y, Kettenhofen R, Jovinge S, Bloch W, Bohlen H, Welz A, Hescheler J, Jacobsen SE, Fleischmann BK. Engraftment of engineered ES cell-derived cardiomyocytes but not BM cells restores contractile function to the infarcted myocardium. *J Exp Med.* 2006;203(10):2315-2327.
155. Assmus B, Schachinger V, Teupe C, Britten M, Lehmann R, Dobert N, Grunwald F, Aicher A, Urbich C, Martin H, Hoelzer D, Dimmeler S, Zeiher AM. Transplantation of Progenitor Cells and Regeneration Enhancement in Acute Myocardial Infarction (TOPCARE-AMI). *Circulation.* 2002;106(24):3009-3017.
156. Strauer BE, Brehm M, Zeus T, Kostering M, Hernandez A, Sorg RV, Kogler G, Wernet P. Repair of infarcted myocardium by autologous intracoronary mononuclear bone marrow cell transplantation in humans. *Circulation.* 2002;106(15):1913-1918.
157. Wollert KC, Meyer GP, Lotz J, Ringes-Lichtenberg S, Lippolt P, Breidenbach C, Fichtner S, Korte T, Hornig B, Messinger D, Arseniev L, Hertenstein B, Ganser A, Drexler H. Intracoronary autologous bone-marrow cell transfer after myocardial infarction: the BOOST randomised controlled clinical trial. *Lancet.* 2004;364(9429):141-148.
158. Lunde K, Solheim S, Aakhus S, Arnesen H, Abdelnoor M, Egeland T, Endresen K, Ilebakk A, Mangschau A, Fjeld JG, Smith HJ, Taraldsrud E, Groggaard HK, Bjornerheim R, Brekke M, Muller C, Hopp E, Ragnarsson A, Brinchmann JE, Forfang K. Intracoronary injection of mononuclear bone marrow cells in acute myocardial infarction. *N Engl J Med.* 2006;355(12):1199-1209.
159. Wobus AM, Boheler KR. Embryonic stem cells: prospects for developmental biology and cell therapy. *Physiol Rev.* 2005;85(2):635-678.
160. Yuasa S, Itabashi Y, Koshimizu U, Tanaka T, Sugimura K, Kinoshita M, Hattori F, Fukami S, Shimazaki T, Ogawa S, Okano H, Fukuda K. Transient inhibition of



- BMP signaling by Noggin induces cardiomyocyte differentiation of mouse embryonic stem cells. *Nat Biotechnol.* 2005;23(5):607-611.
161. Mummery C, Ward-van Oostwaard D, Doevendans P, Spijker R, van den Brink S, Hassink R, van der Heyden M, Opthof T, Pera M, de la Riviere AB, Passier R, Tertoolen L. Differentiation of human embryonic stem cells to cardiomyocytes: role of coculture with visceral endoderm-like cells. *Circulation.* 2003;107(21):2733-2740.
  162. Lev S, Kehat I, Gepstein L. Differentiation pathways in human embryonic stem cell-derived cardiomyocytes. *Ann N Y Acad Sci.* 2005;1047:50-65.
  163. Wakitani S, Takaoka K, Hattori T, Miyazawa N, Iwanaga T, Takeda S, Watanabe TK, Tanigami A. Embryonic stem cells injected into the mouse knee joint form teratomas and subsequently destroy the joint. *Rheumatology (Oxford).* 2003;42(1):162-165.
  164. Klug MG, Soonpaa MH, Koh GY, Field LJ. Genetically selected cardiomyocytes from differentiating embryonic stem cells form stable intracardiac grafts. *J Clin Invest.* 1996;98(1):216-224.
  165. Hidaka K, Shirai M, Lee JK, Wakayama T, Kodama I, Schneider MD, Morisaki T. The cellular prion protein identifies bipotential cardiomyogenic progenitors. *Circ Res.* 106(1):111-119.
  166. Hattori F, Chen H, Yamashita H, Tohyama S, Satoh YS, Yuasa S, Li W, Yamakawa H, Tanaka T, Onitsuka T, Shimoji K, Ohno Y, Egashira T, Kaneda R, Murata M, Hidaka K, Morisaki T, Sasaki E, Suzuki T, Sano M, Makino S, Oikawa S, Fukuda K. Nongenetic method for purifying stem cell-derived cardiomyocytes. *Nat Methods.* 7(1):61-66.
  167. Taylor DA, Atkins BZ, Hungspreugs P, Jones TR, Reedy MC, Hutcheson KA, Glower DD, Kraus WE. Regenerating functional myocardium: improved performance after skeletal myoblast transplantation. *Nat Med.* 1998;4(8):929-933.
  168. Reinecke H, Poppa V, Murry CE. Skeletal muscle stem cells do not transdifferentiate into cardiomyocytes after cardiac grafting. *J Mol Cell Cardiol.* 2002;34(2):241-249.
  169. Reinecke H, MacDonald GH, Hauschka SD, Murry CE. Electromechanical coupling between skeletal and cardiac muscle. Implications for infarct repair. *J Cell Biol.* 2000;149(3):731-740.
  170. Menasche P. Skeletal myoblast transplantation for cardiac repair. *Expert Rev Cardiovasc Ther.* 2004;2(1):21-28.
  171. Caplan AI, Dennis JE. Mesenchymal stem cells as trophic mediators. *J Cell Biochem.* 2006;98(5):1076-1084.
  172. Makino S, Fukuda K, Miyoshi S, Konishi F, Kodama H, Pan J, Sano M, Takahashi T, Hori S, Abe H, Hata J, Umezawa A, Ogawa S. Cardiomyocytes can be generated from marrow stromal cells in vitro. *J Clin Invest.* 1999;103(5):697-705.
  173. El-Badri NS, Maheshwari A, Sanberg PR. Mesenchymal stem cells in autoimmune disease. *Stem Cells Dev.* 2004;13(5):463-472.
  174. Bittira B, Shum-Tim D, Al-Khaldi A, Chiu RC. Mobilization and homing of bone marrow stromal cells in myocardial infarction. *Eur J Cardiothorac Surg.* 2003;24(3):393-398.

175. Breitbach M, Bostani T, Roell W, Xia Y, Dewald O, Nygren JM, Fries JW, Tiemann K, Bohlen H, Hescheler J, Welz A, Bloch W, Jacobsen SE, Fleischmann BK. Potential risks of bone marrow cell transplantation into infarcted hearts. *Blood*. 2007;110(4):1362-1369.
176. Orlic D, Kajstura J, Chimenti S, Limana F, Jakoniuk I, Quaini F, Nadal-Ginard B, Bodine DM, Leri A, Anversa P. Mobilized bone marrow cells repair the infarcted heart, improving function and survival. *Proc Natl Acad Sci U S A*. 2001;98(18):10344-10349.
177. Sugano Y, Anzai T, Yoshikawa T, Maekawa Y, Kohno T, Mahara K, Naito K, Ogawa S. Granulocyte colony-stimulating factor attenuates early ventricular expansion after experimental myocardial infarction. *Cardiovasc Res*. 2005;65(2):446-456.
178. Kuhn B, del Monte F, Hajjar RJ, Chang YS, Lebeche D, Arab S, Keating MT. Periostin induces proliferation of differentiated cardiomyocytes and promotes cardiac repair. *Nat Med*. 2007;13(8):962-969.
179. Novoyatleva T, Diehl F, van Amerongen MJ, Patra C, Ferrazzi F, Bellazzi R, Engel FB. TWEAK is a positive regulator of cardiomyocyte proliferation. *Cardiovasc Res*. 85(4):681-690.
180. Oh H, Bradfute SB, Gallardo TD, Nakamura T, Gaussin V, Mishina Y, Pocius J, Michael LH, Behringer RR, Garry DJ, Entman ML, Schneider MD. Cardiac progenitor cells from adult myocardium: homing, differentiation, and fusion after infarction. *Proc Natl Acad Sci U S A*. 2003;100(21):12313-12318.
181. Beltrami AP, Barlucchi L, Torella D, Baker M, Limana F, Chimenti S, Kasahara H, Rota M, Musso E, Urbanek K, Leri A, Kajstura J, Nadal-Ginard B, Anversa P. Adult cardiac stem cells are multipotent and support myocardial regeneration. *Cell*. 2003;114(6):763-776.
182. Martin CM, Meeson AP, Robertson SM, Hawke TJ, Richardson JA, Bates S, Goetsch SC, Gallardo TD, Garry DJ. Persistent expression of the ATP-binding cassette transporter, *Abcg2*, identifies cardiac SP cells in the developing and adult heart. *Dev Biol*. 2004;265(1):262-275.
183. Mouquet F, Pfister O, Jain M, Oikonomopoulos A, Ngoy S, Summer R, Fine A, Liao R. Restoration of cardiac progenitor cells after myocardial infarction by self-proliferation and selective homing of bone marrow-derived stem cells. *Circ Res*. 2005;97(11):1090-1092.
184. Laugwitz KL, Moretti A, Lam J, Gruber P, Chen Y, Woodard S, Lin LZ, Cai CL, Lu MM, Reth M, Platoshyn O, Yuan JX, Evans S, Chien KR. Postnatal isl1+ cardioblasts enter fully differentiated cardiomyocyte lineages. *Nature*. 2005;433(7026):647-653.
185. Moretti A, Caron L, Nakano A, Lam JT, Bernshausen A, Chen Y, Qyang Y, Bu L, Sasaki M, Martin-Puig S, Sun Y, Evans SM, Laugwitz KL, Chien KR. Multipotent embryonic isl1+ progenitor cells lead to cardiac, smooth muscle, and endothelial cell diversification. *Cell*. 2006;127(6):1151-1165.
186. Wersto RP, Chrest FJ, Leary JF, Morris C, Stetler-Stevenson MA, Gabrielson E. Doublet discrimination in DNA cell-cycle analysis. *Cytometry*. 2001;46(5):296-306.

- 187.** Reimer PJ, Baillie, M. G. L., Bard, E., Bayliss, A., Beck, J. W., Bertrand, C. J. H., Blackwell, P. G., Buck, C. E., Burr, G. S., Cutler, K. B., Damon, P. E., Edwards, R. L., Fairbanks, R. G., Friedrich, M., Guilderson, T. P., Hogg, A. G., Hughen, K. A., Kromer, B., McCormac, G., Manning, S., Bronk Ramsey, C., Reimer, R. W., Remmele, S., Southon, J. R., Stuiver, M., Talamo, S., Taylor, F. W., van der Plicht, J. and Weyhenmeyer, C. E. IntCal04 terrestrial radiocarbon age calibration, 0-26 cal kyr BP . *Radiocarbon*. 2004;26:1029-1058
- 188.** Rakic P. Adult neurogenesis in mammals: an identity crisis. *J Neurosci*. 2002;22(3):614-618.
- 189.** Levin I, Kromer B. The tropospheric  $^{14}\text{CO}_2$  level in mid latitudes of the northern hemisphere (1959-2003). *Radiocarbon*. 2004;46:1261-1272.
- 190.** Adler CP. [DNA in growing hearts of children. Biochemical and cytophotometric investigations (author's transl)]. *Beitr Pathol*. 1976;158(2):173-202.
- 191.** Brodsky V, Sarkisov DS, Arefyeva AM, Panova NW, Gvasava IG. Polyploidy in cardiac myocytes of normal and hypertrophic human hearts; range of values. *Virchows Arch*. 1994;424(4):429-435.
- 192.** Gruenwald P, Hoang Ngoc M. Evaluation of body and organ weights in perinatal pathology. I. Normal standards derived from autopsies. *Am J Clin Pathol*. 1960;34:247-253.
- 193.** Ieda M, Tsuchihashi T, Ivey KN, Ross RS, Hong TT, Shaw RM, Srivastava D. Cardiac fibroblasts regulate myocardial proliferation through beta1 integrin signaling. *Dev Cell*. 2009;16(2):233-244.