



# LUND UNIVERSITY

## Serum antibodies to *Helicobacter hepaticus* and *Helicobacter pylori* in patients with chronic liver disease

Nilsson, Ingrid; Lindgren, S; Eriksson, S; Wadström, Torkel

*Published in:*  
Gut

2000

[Link to publication](#)

*Citation for published version (APA):*

Nilsson, I., Lindgren, S., Eriksson, S., & Wadström, T. (2000). Serum antibodies to *Helicobacter hepaticus* and *Helicobacter pylori* in patients with chronic liver disease. *Gut*, 46(3), 410-414.  
<http://gut.bmjournals.com/cgi/content/abstract/46/3/410>

*Total number of authors:*  
4

### General rights

Unless other specific re-use rights are stated the following general rights apply:  
Copyright and moral rights for the publications made accessible in the public portal are retained by the authors and/or other copyright owners and it is a condition of accessing publications that users recognise and abide by the legal requirements associated with these rights.

- Users may download and print one copy of any publication from the public portal for the purpose of private study or research.
- You may not further distribute the material or use it for any profit-making activity or commercial gain
- You may freely distribute the URL identifying the publication in the public portal

Read more about Creative commons licenses: <https://creativecommons.org/licenses/>

### Take down policy

If you believe that this document breaches copyright please contact us providing details, and we will remove access to the work immediately and investigate your claim.

LUND UNIVERSITY

PO Box 117  
221 00 Lund  
+46 46-222 00 00

# Serum antibodies to *Helicobacter hepaticus* and *Helicobacter pylori* in patients with chronic liver disease

I Nilsson, S Lindgren, S Eriksson, T Wadström

## Abstract

**Background**—Bile tolerant helicobacter species such as *H hepaticus* and *H bilis* have frequently been reported to cause hepatitis in mice and other rodents.

**Aims**—To investigate the possible pathogenic role of these and other helicobacter species in chronic liver disease in humans.

**Methods**—Serum samples from 144 patients with various chronic liver diseases, 30 patients with primary sclerosing cholangitis (PSC), and 48 healthy blood donors were analysed for antibodies against *H hepaticus* murine strain CCUG 33637 and *H pylori* strain CCUG 17874. Cell surface proteins of *H hepaticus* were extracted by acid glycine buffer and used in an enzyme immunoassay (EIA) and immunoblot (IB).

**Results**—56 of 144 (39%) patients with chronic liver diseases and six of 30 (20%) with PSC showed increased antibody concentrations in the *H hepaticus* EIA; in the *H pylori* EIA the numbers were 58% and 13% respectively. Compared with the healthy blood donors the antibody reactivity against the two helicobacter species was not increased (46% and 48% respectively). Patient serum samples retested by the *H hepaticus* EIA after absorption with sonicated *H pylori* cells remained positive in 12 of 37 (33%) serum samples. Distinct antibody reactivity to 55–65 kDa proteins was observed by *H hepaticus* IB, after the absorption step, and was considered specific for *H hepaticus*. These 12 serum samples were from patients with chronic alcoholic liver disease.

**Conclusions**—Antibodies to *H hepaticus*, often cross reacting with *H pylori*, occur frequently in patients with chronic liver diseases, with no clear cut relation to specific diagnostic groups. The pathogenic significance of these findings is not known. (Gut 2000;46:410–414)

**Keywords:** *Helicobacter hepaticus*; *Helicobacter pylori*; chronic liver diseases; primary sclerosing cholangitis; enzyme immunoassay; immunoblot

*Helicobacter hepaticus* was discovered in 1992 at the National Cancer Institute-Fredrick Cancer Research and Development Centre (NCI-FCRDC) and first isolated from a colony of A/JCr mice, a low liver tumour incidence mouse strain with a high incidence of severe hepatocellular tumours in aged animals.<sup>1 2</sup>

Neither chemicals nor virus induced the tumours but *H hepaticus* was isolated and cultured from liver suspensions. Healthy mice were injected intraperitoneally with *H hepaticus* and the organisms were recovered from the extracellular space of hepatic bile canaliculi. The intrahepatic biliary system was also infected with *H hepaticus*, thus likely to be the aetiological agent of chronic hepatitis and associated with hepatocellular tumours in this colony of aged mice.

Adenocarcinoma of the stomach is the second most prevalent of all human malignancies worldwide and associated with infection, at an early age, with *H pylori*<sup>3</sup>; chronic atrophic gastritis is known to be a precursor of gastric cancer.<sup>4</sup> Little is known about the possible role of helicobacter species in human liver disease but *H pylori* DNA has been detected in bile samples by polymerase chain reaction.<sup>5</sup> Fox and colleagues<sup>6</sup> recently published a study on the possible role of *H hepaticus*, *H bilis*, and other bile tolerant helicobacters in chronic cholecystitis and liver disease. Studies of the *H hepaticus* syndrome of chronic hepatitis and liver tumours in mice may give new insights into the possible role of helicobacter species other than *H pylori* in human stomach cancer, gastric lymphoma, and chronic liver diseases.<sup>7</sup>

The aims of the present study were to analyse the antibody response against cell surface proteins of *H hepaticus* (murine strain CCUG 33637) in two different patient groups: chronic liver diseases of various aetiologies; and primary sclerosing cholangitis, a chronic inflammatory liver disorder primarily affecting the bile ducts. *H hepaticus* antibody prevalence was compared with the prevalence of *H pylori* antibodies in the same patient groups and in healthy blood donors. In addition, cross reactivity between antigens of the two helicobacter species was analysed.

## Materials and methods

### PATIENT SAMPLES

Serum samples from patients with various chronic liver diseases (n=144, age 31–88 years) were analysed. They represented a two year prospective series of patients investigated at the Department of Medicine, University Hospital of Malmö for suspected chronic liver disease

**Abbreviations used in this paper:** CLD, chronic liver disease; EIA, enzyme immunoassay; ERC, endoscopic retrograde cholecystography; IB, immunoblot; PCR, polymerase chain reaction; PSC, primary sclerosing cholangitis; RAA, relative antibody activity.

Department of Infectious Diseases and Medical Microbiology, University of Lund, Sweden

I Nilsson  
T Wadström

Gastroenterology-Hepatology Division, Department of Medicine, University Hospital of Malmö, Sweden

S Lindgren  
S Eriksson

Correspondence to:  
Dr I Nilsson, Medical Microbiology, University of Lund, Sölvegatan 23, S-223 62 Lund, Sweden

Accepted for publication  
5 October 1999

(CLD) owing to increased concentrations of liver enzymes and/or clinical symptoms of more than six months duration.<sup>8</sup> Thirty patients with primary sclerosing cholangitis (PSC)<sup>9</sup> were also included. The diagnosis was verified in all cases by endoscopic retrograde cholecystography (ERC). Thirty per cent of the patients had alcoholic liver disease, 20% autoimmune liver disease (primary biliary cirrhosis, autoimmune hepatitis, and primary sclerosing cholangitis) and 10% cryptogenic liver disease. Other diagnostic groups were chronic viral hepatitis, metabolic liver disease, systemic disease, drug reactions, malignant disease, and heart failure.

Blood donor serum samples (n=48) randomly collected at the Blood Transfusion Unit at the University Hospital of Malmö, served as controls. All serum samples were kept frozen at -20°C until analysed.

#### BACTERIAL STRAINS AND CULTURE CONDITIONS

*H hepaticus*, a murine liver isolate (strain CCUG 33637) was cultured on Fastidious agar (Amersham Pharmacia Biotech, Rainham, UK), and grown for 7–10 days in a microaerophilic atmosphere (3% H<sub>2</sub>, 10% CO<sub>2</sub>, 5% O<sub>2</sub>, 82% N<sub>2</sub>) at 37°C. Agar plates were examined for colonies with a green metallic transparent surface, and tested positive for urease, catalase, and oxidase enzyme activities.

#### PREPARATION OF CELL SURFACE ANTIGENS FOR ENZYME IMMUNOASSAY AND IMMUNOBLOT

Ten agar plates (Φ5 cm) with confluent bacterial growth were harvested and washed once in 10 mM phosphate buffered saline (PBS) pH 7.2, with a total cell yield of 0.6 g wet weight. Cell surface antigens were extracted using a standard method with 0.2 M acid glycine buffer pH 2.2 as described previously.<sup>10</sup> The protein concentration was 290 µg per ml as determined by the BioRad protein assay (BioRad, Richmond, UK). The protein profile of *H hepaticus* was compared with acid glycine extracted cell surface proteins of *H pylori* (CCUG 17874) by sodium dodecyl sulphate polyacrylamide gel electrophoresis (SDS-PAGE)<sup>11</sup> followed by silver staining.

#### *H HEPATICUS* ENZYME IMMUNOASSAY (IgG-EIA)

The *H hepaticus* enzyme immunoassay (EIA) was performed as described for *H pylori* EIA.<sup>10, 12</sup> In brief, Maxisorp immunoplates (NUNC, Roskilde, Denmark) were coated with 100 µl per well with a protein concentration of 5 µg per ml; serum diluted 1/800 was added and the plates were incubated for 90 minutes at 37°C. An alkaline phosphatase goat antihuman antibody (Sigma, St Louis, Missouri, USA) was used as the second antibody. After repeated washings, 100 µl per well of a substrate solution containing *p*-nitrophenyl phosphate (Sigma), diethanolamine, and MgCl was added. The EIA test results are expressed as corrected mean absorbance values (A 405 nm) in per cent of a reference standard (human gammaglobulin, Pharmacia & Upjohn, Stockholm, Sweden). A relative antibody activity (RAA value) greater than 35 and less than 25

units was defined as positive and negative, respectively; values in between were regarded as low positive values (borderlines). The cut off values are based on EIA and immunoblot analyses of serum samples from patients with positive and negative gastric culture for *H pylori*, healthy blood donors, and children.<sup>10, 12</sup> Similar IgG EIA analyses were performed with acid glycine extracted cell surface proteins of *H pylori*.

#### IMMUNOBLOT (IgG)

In the immunoblot assay, acid glycine extracted cell surface proteins of *H hepaticus* were separated by SDS-PAGE with an 8–18% gradient (ExelGel, Pharmacia Biotech AB, Uppsala, Sweden) according to the Pharmacia manual. Proteins were electroblotted onto a PVDF membrane (Millipore, Intertech, Bedford, Massachusetts, USA), and subsequent blocking and probing with patient and control serum samples were performed as described previously.<sup>13</sup> Similar immunoblot analyses were performed with acid glycine extracted cell surface proteins of *H pylori*.

#### IgA IMMUNOBLOT

As control for non-specific bacterial binding between proteins of *H hepaticus/H pylori* and IgA, an immunoblot was performed. Strips, containing separated cell surface proteins of the two helicobacter species were overlaid with human IgA antibodies (myeloma produced) and then incubated with an enzyme conjugated anti-IgA antibody followed by substrate staining. Another two strips were probed with serum samples from *H hepaticus/H pylori* EIA positive patients. Enzyme conjugated antihuman IgA antibodies (P216, Dako A/S, Glostrup, Denmark) were added and after incubation the strips were developed.<sup>13</sup>

#### IMMUNOSTAINING OF HEAT SHOCK PROTEINS

##### (Hsp60)

Immunoblot strips containing separated *H hepaticus* and *H pylori* cell surface proteins respectively were probed with a polyclonal antiserum to the *H pylori* Hsp60 protein. The Hsp60 protein was purified from *H pylori* strain CCUG 17874 by gel filtration (Superose 12, Pharmacia Biotech, Uppsala, Sweden) and ion exchange chromatography (MonoQ, Pharmacia Biotech), and then used for immunisation.<sup>14</sup> Corresponding strips were incubated with an antihuman Hsp60 serum (Santa Cruz, Biotechnology Inc., USA). Immunoblot analyses were performed as described above.

#### ABSORPTION EXPERIMENTS

For absorption of potential cross reacting antibodies, sonicated whole cells of *H pylori* (CCUG 17874) were used. To 1 ml of sonicated cells (A 540 of OD 1.0) 10 µl serum was added and incubated for one hour at 22°C and for 16 hours at 6°C during constant shaking. Cells were removed by centrifugation and supernatants collected for *Helicobacter* serology.

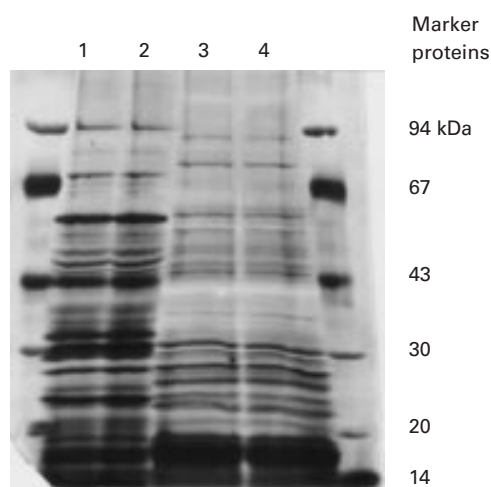


Figure 1 Protein profiles of the acid glycine extracted cell surface proteins of *Helicobacter pylori* (lanes 1 and 2) and *Helicobacter hepaticus* (lanes 3 and 4) separated by SDS-PAGE (8–18%) and stained with silver.

Table 1 Outcome of the *H hepaticus* EIA and *H pylori* EIA in serum samples from patients with chronic liver disease (CLD) and primary sclerosing cholangitis (PSC)

	<i>H hepaticus</i> EIA positive* (%)	<i>H pylori</i> EIA positive* (%)
CLD (n=144)	56 (39)	79 (55)
PSC (n=30)	6 (20)	4 (13)
Controls† (n=48)	22 (46)	24 (48)

\*Borderline values are included.  
†Healthy blood donors.  
n, number of serum samples.

## Results

Protein profiles of acid glycine extracted cell surface proteins from *H hepaticus* were compared with a corresponding antigen preparation of *H pylori* after silver staining of the SDS-PAGE gel. Differences of the band pattern were observed with proteins migrating in the region of 43–94 kDa in molecular mass ( $M_r$ ), whereas proteins with lower  $M_r$  showed a similar pattern (fig 1).

### IgG-EIA

Antibody reactivity to extracted *H hepaticus* cell surface proteins in serum samples from patients with chronic liver disease was initially analysed by EIA. Of 144 serum samples, 37 (26%) showed increased antibody concentrations (RAA greater than 35 units), 19 (13%) showed moderate values (RAA 25–35 units), and 88 (61%) were negative (table 1). The distribution of antibody reactivity in the diagnostic subgroups among *H hepaticus* EIA positive patients, including primary biliary cirrhosis and other autoimmune liver diseases and cryptogenic liver disease, did not differ from the whole patient population. In the *H pylori* EIA, 64 of 144 (44%) serum samples were positive and 15 serum samples gave borderline values (table 1). Of the 30 serum samples from PSC patients, six (20%) showed increased antibody concentrations, and 24 (77%) were negative in the *H hepaticus* EIA. In the *H pylori* EIA four serum samples were positive (table 1).

Serum samples from 48 healthy blood donors were assayed in the two EIAs and the

Table 2 Cross reactivity to cell surface antigens between the two helicobacter species

	Positive in <i>H hepaticus</i> EIA before absorption	Positive in <i>H hepaticus</i> EIA after absorption
Patients	37	12
Controls*	24	0 (3†)

Cross reactivity to cell surface antigens between the two helicobacter species was analysed in 37 serum samples from the patients with chronic liver disease and in 24 from the controls. The serum was absorbed with sonicated whole cell material from *H pylori* and then retested.

\*Healthy blood donors.

†Values just above the lower cut off.

seroprevalence was found to be 46% for *H hepaticus* and 48% for *H pylori* (table 1).

### ABSORPTION EXPERIMENTS

Cross reactivity between cell surface proteins of the two helicobacter species was analysed with 37 serum samples from patients with chronic liver diseases showing high antibody concentrations in the *H hepaticus* EIA (14 of these were *H pylori* EIA negative) and with 24 blood donor serum samples found positive by *H hepaticus* EIA (three of these were *H pylori* EIA negative). In 25 patients the *H hepaticus* EIA became negative but 12 serum samples remained positive. These serum samples were from patients who suffered from alcoholic related liver disease. All blood donor serum samples became negative after the absorption step except three that showed low values close to the lower cut off level (table 2).

### IMMUNOBLOT (IgG)

Patient serum samples absorbed with *H pylori* whole cells and with a remaining positive value in the *H hepaticus* EIA were further analysed by immunoblot, and the antibody reactivity was compared with results with the same serum samples that were not absorbed. In the *H hepaticus* immunoblot the unabsorbed serum samples intensively stained proteins of 55–65 kDa in  $M_r$  (fig 2A). This was not observed in the immunoblot based on *H pylori* antigens (fig 2B). When these serum samples, absorbed with sonicated *H pylori* cells, were analysed in the *H hepaticus* immunoblot, reactivity to the 55–65 kDa proteins remained (fig 2C). However, when the serum samples were probed on strips containing separated *H pylori* proteins no reactivity was observed (figure 2D).

### IMMUNOBLOT (IgA)

Patients with chronic alcoholic liver disease often show high serum IgA levels compared with healthy individuals.<sup>15</sup> The immunoblots performed for control of a non-specific binding of bacterial cell material from *H hepaticus* and *H pylori* showed no visible IgA reactivity (data not shown).

### IMMUNOSTAINING OF Hsp60

By immunoblot the polyclonal anti-*H pylori* Hsp60 serum stained two major bands with an approximate  $M_r$  of 62–65 kDa with the two helicobacter species. The antihuman Hsp60 serum weakly stained a 65 kDa protein of *H pylori*, and with *H hepaticus* no bands were observed (data not shown).

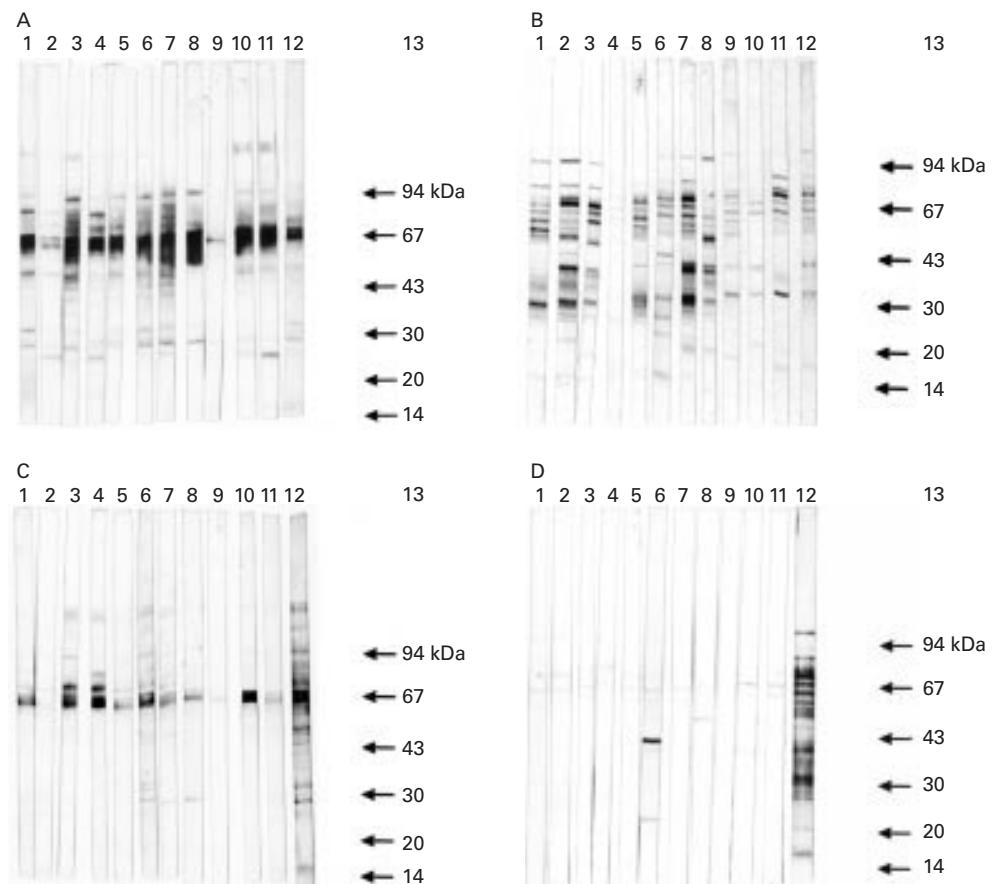


Figure 2 Antibody response to cell surface proteins of *Helicobacter hepaticus* (A and C) and *Helicobacter pylori* (B and D) was analysed by immunoblotting with serum samples from patients with chronic liver disease (lanes 1 to 11). Lane 12 represents the reference standard. In (C) and (D) serum samples were absorbed with sonicated helicobacter cells.

### Discussion

Antibodies against *H hepaticus* and *H pylori* were detected in serum samples from patients with various liver diseases. The frequency of antibody reactivity was, however, not increased in any specific diagnostic groups and serum positivity was not increased in patients with chronic liver diseases compared with the healthy individuals. Some of these antibodies may represent cross reactivity between the two species, while a specific antibody response to cell surface proteins of *H hepaticus* was detected in serum samples from patients with alcoholic related liver disease.

Several new species of the genus helicobacter have recently been identified in various mammals, with some species inducing gastrointestinal infection while others seem to colonise the gastrointestinal tract without causing infection and tissue inflammation.<sup>16-18</sup> Recent reports on multifocal hepatitis in dogs<sup>19</sup> induced by bile tolerant helicobacter, suggested that helicobacter organisms with liver tropism may also cause hepatitis in humans and other primates. However, up to now no human liver bile duct isolates of helicobacter have been reported although bile samples were shown to contain *H pylori* DNA.<sup>5</sup> In susceptible strains of mice, *H hepaticus* causes an acute focal hepatitis, which progresses to chronic hepatitis with the presence of relatively few infectious organisms.<sup>20</sup> Franklin and colleagues<sup>21</sup> reported on a novel helicobacter

species, *H cholecystus*, isolated from the bile tract of Syrian hamsters with chronic gall bladder inflammation and pancreatitis. Interestingly, Siringo and colleagues<sup>22</sup> reported a high prevalence of *H pylori* infection in cirrhotic patients, which was not confirmed by Tsai.<sup>23</sup> Thus, it is possible that not yet isolated urease positive as well as urease negative helicobacter species may be able to colonise the human intestinal tract, as recently described in dogs and cats.<sup>24</sup> Fox and colleagues<sup>6</sup> concluded that helicobacter might induce a chronic gall bladder inflammation in humans with late sequelae such as bile tract and gall bladder malignancies, and a potential role of *H hepaticus*, *H bilis*, and other bile tolerant helicobacter species in chronic cholecystitis and liver disease. The importance of further studies on the possible role of these new helicobacter species in human liver disease was emphasised as was the need to develop non-invasive serological assays to determine the seroprevalence of hepatic helicobacter infections.

It is assumed that bile tolerant helicobacter species are antigenically and genetically similar. Our findings in this study, showing 12 patient serum samples with high antibody reactivity to cell surface proteins of *H hepaticus* even after absorption with *H pylori*, indicate that some helicobacter-like organism may be involved in human liver diseases. By immunoblotting, antibodies mainly reacted to the 55-65 kDa proteins and at least two of these

proteins were recognised by an anti-*H pylori* Hsp60 antibody, suggesting that patient serum samples intensively staining the 60–65 kDa proteins of *H hepaticus* contained increased concentrations of antibodies to helicobacter Hsp60 proteins (fig 2A). Hsps are highly conserved, immunogenic molecules induced by heat, inflammatory mediators, and other forms of physiological stress<sup>25</sup>; ethanol might be such a factor. The pathogenic mechanism of this finding is unknown, but it is a fact that ethanol abuse induces a local immune defect and activation of a latent helicobacter infection. Ward and colleagues<sup>26</sup> found that antibodies to helicobacter (Hsp70) immunoreacted with hepatocytes from infected mice livers and thus could be responsible for autoimmune mediated hepatic lesions of bile duct epithelium infected with *H hepaticus*.

In conclusion, antibodies to *H hepaticus*, often cross reacting with *H pylori*, were detected in serum samples from patients with alcoholic related liver disease. The antibody response to *H hepaticus* proteins with  $M_r$  of 60–65 kDa remained even after absorption experiments. Attempts to culture strains from human liver biopsy specimens and bile samples will be an attractive approach, together with improved serological assays, to explore further the possible role of bile tolerant helicobacters in various biliary tract and liver diseases.

This project was supported by grants from the Swedish Medical Research Council (16x04723), the University Hospital of Lund, and the Forssman Foundation. Part of this study was reported at EASL, Lisbon, April 1998 (*J Hepatol* 1998;(suppl 1):28, abstract no. C11/013) and at the XIth International Workshop on Gastrointestinal Pathology and Helicobacter pylori, Budapest, 2–5 September 1998 (*Gut* 1998;(suppl 2):43, abstract no. 14/402).

- 1 Ward JM, Fox JG, Anver MR, et al. Chronic active hepatitis and associated liver tumors in mice caused by a persistent bacterial infection with a novel Helicobacter species. *J Natl Cancer Inst* 1994;86:1222–7.
- 2 Fox JG, Li X, Yan L, et al. Chronic proliferative hepatitis in A/JCr mice associated with persistent Helicobacter hepaticus infection: a model of Helicobacter-induced carcinogenesis. *Infect Immun* 1996;64:1548–58.
- 3 Blaser MJ, Perez-Perez GI, Kleanthous H, et al. Infection with Helicobacter pylori strains possessing cagA is associated with an increased risk of developing adenocarcinoma of the stomach. *Cancer Res* 1995;55:2111–15.
- 4 Kuipers EJ, Perez-Perez GI, Meuwissen SG, et al. Helicobacter pylori and atrophic gastritis: importance of the cagA status. *J Natl Cancer Inst* 1995;87:1777–80.
- 5 Lin T-T, Yeh C-T, Wu C-S, et al. Detection and partial sequence analysis of Helicobacter pylori DNA in the bile samples. *Dig Dis Sci* 1995;40:2214–19.
- 6 Fox JG, Dewhirst FE, Shen Z, et al. Hepatic Helicobacter species identified in bile gallbladder tissue from Chileans with chronic cholecystitis. *Gastroenterology* 1998;114:755–63.
- 7 Blaser M. Helicobacter and biliary tract disease. *Gastroenterology* 1998;114:840–2.
- 8 Verbaan H, Hoffmann G, Lindgren S, et al. Long-term outcome of chronic hepatitis C infection in a low-prevalence area. *Scand J Gastroenterol* 1998;33:650–5.
- 9 Broomé U, Olsson R, Loof L, et al. Natural history and prognostic factors in 305 Swedish patients with primary sclerosing cholangitis. *Gut* 1996;38:610–15.
- 10 Lelwala-Guruge J, Schalén C, Ljungh Å, et al. Detection of antibodies to Helicobacter pylori cell surface antigens. *Scand J Infect Dis* 1990;22:457–65.
- 11 Laemmli UK. Cleavage of structural proteins during the assembly of the head of bacteriophage T4. *Nature* 1970;227:680–5.
- 12 Lelwala-Guruge J, Nilsson I, Ljungh Å, et al. Cell surface proteins of Helicobacter pylori as antigens in an ELISA and a comparison with three commercial ELISA. *Scand J Infect Dis* 1992;24:457–65.
- 13 Nilsson I, Ljungh Å, Aleljung P, et al. Immunoblot for serodiagnosis of Helicobacter pylori infections. *J Clin Microbiol* 1997;35:427–32.
- 14 Nilsson I. Thesis, ISBN 91-628-3218-2, Lund University, Sweden, 1998.
- 15 Meillet D, Labrousse F, Benoit MO, et al. Increased serum concentration of IgA<sub>2</sub> subclass and IgA<sub>2</sub>/IgA<sub>1</sub> ratio: specific markers of chronic alcoholic abuse? *Eur J Clin Chem Clin Biochem* 1997;35:275–9.
- 16 Jalava K, Kaartinen M, Utrainen M, et al. Helicobacter salomonis sp. nov., a canine gastric Helicobacter sp. related to Helicobacter felis and Helicobacter bizzozeroni. *Int J Syst Bacteriol* 1997;47:975–82.
- 17 Taylor NS, Fox JG, Yan L. In-vitro hepatotoxic factor in Helicobacter hepaticus, H pylori and other Helicobacter species. *J Med Microbiol* 1995;42:48–52.
- 18 Baker DG. Natural pathogens of laboratory mice, rats, and rabbits and their effects on research. *Clin Microbiol Rev* 1998;11:231–66.
- 19 Fox JG, Drolet R, Higgins R, et al. Helicobacter canis isolated from a dog liver with multifocal necrotizing hepatitis. *J Clin Microbiol* 1996;34:2479–82.
- 20 Rice JM. Helicobacter hepaticus, a recently recognized bacterial pathogen, associated with chronic hepatitis and hepatocellular neoplasia in laboratory mice. *Emerging Infect Dis* 1995;1:129–31.
- 21 Franklin CL, Beckwith CS, Livingstone RS, et al. Isolation of a novel Helicobacter species, Helicobacter cholecystus sp. nov., from the gallbladders of Syrian hamsters with cholangiofibrosis and centrilobular pancreatitis. *J Clin Microbiol* 1996;34:2952–8.
- 22 Siringo S, Vaira D, Menegatti R, et al. High prevalence of Helicobacter pylori in liver cirrhosis. Relationship with clinical and endoscopic features and the risk of peptic ulcer. *Dig Dis Sci* 1997;42:2024–30.
- 23 Tsai C-J. Helicobacter pylori infection and peptic ulcer disease in cirrhosis. *Dig Dis Sci* 1998;43:1219–25.
- 24 Lecoindre P, Chevallier M, Peyrol S, et al. Pathogenic role of gastric Helicobacter sp in domestic carnivores. *Vet Res* 1997;28:207–15.
- 25 Barton SGRG, Winrow VR, Rampton DS, et al. Circulating antibodies to the 60-kD heat shock protein (hsp) family in patients with Helicobacter pylori infection. *Clin Exp Immunol* 1998;112:490–4.
- 26 Ward JM, Benveniste RE, Fox CH, et al. Autoimmunity in chronic active Helicobacter hepaticus of mice. Serum antibodies and expression of heat shock protein 70 in liver. *Am J Pathol* 1996;148:509–17.