



LUND UNIVERSITY

Frequency analysis of atrial fibrillation from surface electrocardiograms

Husser, Daniela; Stridh, Martin; Sörnmo, Leif; Olsson, Bertil; Bollmann, Andreas

Published in:
Indian Pacing and Electrophysiology Journal

2004

[Link to publication](#)

Citation for published version (APA):

Husser, D., Stridh, M., Sörnmo, L., Olsson, B., & Bollmann, A. (2004). Frequency analysis of atrial fibrillation from surface electrocardiograms. *Indian Pacing and Electrophysiology Journal*, 4(3), 122-136.

Total number of authors:
5

General rights

Unless other specific re-use rights are stated the following general rights apply:

Copyright and moral rights for the publications made accessible in the public portal are retained by the authors and/or other copyright owners and it is a condition of accessing publications that users recognise and abide by the legal requirements associated with these rights.

- Users may download and print one copy of any publication from the public portal for the purpose of private study or research.
- You may not further distribute the material or use it for any profit-making activity or commercial gain
- You may freely distribute the URL identifying the publication in the public portal

Read more about Creative commons licenses: <https://creativecommons.org/licenses/>

Take down policy

If you believe that this document breaches copyright please contact us providing details, and we will remove access to the work immediately and investigate your claim.

LUND UNIVERSITY

PO Box 117
221 00 Lund
+46 46-222 00 00

Review Article

Frequency Analysis of Atrial Fibrillation From the Surface Electrocardiogram

Daniela Husser, MD^{*,†}, Martin Stridh, PhD[‡], Leif Sornmo, PhD[‡], S. Bertil Olsson, MD, PhD[§],
Andreas Bollmann, MD^{*,†,§}

Department of Cardiology, Good Samaritan Hospital* and Harbor-UCLA Medical Center[†], Los Angeles, USA

Departments of Electrosience[‡] and Cardiology[§], Lund University, Lund, Sweden

Address for correspondence: Andreas Bollmann, MD, Department of Cardiology, Good Samaritan Hospital, 1225 Wilshire Blvd., Los Angeles, CA 90017, USA. Email: andreas.bollmann@kard.lu.se

Abstract:

Atrial fibrillation (AF) is the most common arrhythmia encountered in clinical practice. Neither the natural history of AF nor its response to therapy are sufficiently predictable by clinical and echocardiographic parameters.

Atrial fibrillatory frequency (or rate) can reliably be assessed from the surface electrocardiogram (ECG) using digital signal processing (filtering, subtraction of averaged QRST complexes, and power spectral analysis) and shows large inter-individual variability. This measurement correlates well with intraatrial cycle length, a parameter which appears to have primary importance in AF domestication and response to therapy. AF with a low fibrillatory rate is more likely to terminate spontaneously, and responds better to antiarrhythmic drugs or cardioversion while high rate AF is more often persistent and refractory to therapy.

In conclusion, frequency analysis of AF seems to be useful for non-invasive assessment of electrical remodeling in AF and may subsequently be helpful for guiding AF therapy.

Key words: atrial fibrillation – ECG signal processing – electrical remodeling – antiarrhythmic drug monitoring – cardioversion.

In recent years, mechanisms leading to atrial fibrillation (AF) induction and maintenance have begun to be explored and rapidly evolving therapies including new antiarrhythmic drugs, antitachycardia pacing algorithms and catheter ablation techniques have been introduced in clinical practice. Nevertheless, outcome of AF patients is still unsatisfactory which - to the greatest extent - can be attributed to the progressing nature of this arrhythmia and high AF recurrence rates following restoration of sinus rhythm. Moreover, AF treatment (e.g. rate vs. rhythm control, choice of antiarrhythmic drugs or device therapy, curative ablation) may be viewed as being based on trial and error, since no test is able to predict the natural history of this arrhythmia or its response to treatment. Subsequently, current AF management guidelines¹ provide no treatment recommendations that “take the various mechanisms and patterns of AF into account”. Thus, it seems desirable to develop tests that quantify AF disease state and guide AF management².

Virtually in every patient with AF, a standard surface electrocardiogram (ECG) is acquired, the main purposes being confirmation of arrhythmia presence and determination of ventricular rate. Fibrillation waves have, moreover, various appearances ranging from fine to coarse and from disorganized to organized, flutter-like. Interestingly, the mechanisms behind the various appearances of the fibrillatory process on the ECG and the possible prognostic information contained within fibrillation waves have just very recently begun to be explored.

The aim of this article is twofold; (1) to describe novel frequency analysis techniques of the surface ECG for characterization of the fibrillatory process, and (2) to present possible applications of these methods, namely for (a) exploring autonomic modulation of AF, (b) monitoring and predicting antiarrhythmic drug effects, and (c) predicting AF recurrence following restoration of sinus rhythm. For this purpose, Medline-listed, peer-reviewed studies are included in this review.

Rationale for Using Atrial Fibrillatory Rate to Characterize Human AF

Shortening of atrial refractoriness and maladaptation to rate are hallmarks of atrial electrical remodeling in AF³. During AF, re-excitation occurs during the repolarization phase of the preceding electrical wave, implying that local excitation almost always occurs without any obvious latency beyond the refractory period. Subsequently, the average atrial fibrillatory rate is likely to reflect averaged refractoriness at any part of the tissue involved. This assumption has been independently verified in both animal⁴ and human AF^{5,6}. Hence, the length of the averaged atrial fibrillatory cycle (which is inversely related to fibrillatory frequency or rate) can be used as an index of the averaged atrial myocardial refractoriness and subsequently AF organization⁷. The importance of shortened refractoriness and subsequently its transformation into short atrial cycles or high rates as assessed by direct intraatrial measurements for AF progression and response to therapy has been well established. Results will be reported as cycle length in milliseconds (ms) if they were obtained from intraatrial recordings. If they were obtained from surface recordings, they will be reported as fibrillatory rate in fibrillations per minute (fpm, the rationale to use this expression is discussed in depth below).

Firstly, spontaneous arrhythmia behavior is related to baseline fibrillatory cycle length. Asano et al induced AF with rapid pacing in 30 patients undergoing electrophysiologic study⁸. Patients in whom AF terminated spontaneously (n=20) had an average fibrillatory cycle length of 176 ms (341 fpm), significantly lower than the 157 ms (382 fpm) recorded in the group of patients where the arrhythmia persisted (n=10). Similar observations were made by Boahene et al who also measured the fibrillatory cycle length from the right atrium in 55 patients with Wolff-Parkinson-White syndrome⁹. These investigators also found that patients with sustained AF (n=45) had shorter mean cycle lengths compared to patients with non-sustained AF (n=10).

Secondly, response to antiarrhythmic drug therapy has been shown to be associated with baseline cycle length and drug-induced cycle length changes. Stambler and colleagues identified a mean right atrial cycle length of 160 ms (375 fpm) as a valuable cutoff-point for conversion to sinus rhythm with ibutilide¹⁰. No patient with shorter cycle length (higher rate) was converted by ibutilide, whereas conversion occurred in 64 % of those patients with longer cycle length (lower rate). Similarly, Fujiki et al¹¹ by using spectral analysis of right atrial electrograms reported 100 % AF conversions with cibenzoline or procainamide if the baseline atrial cycle length was > 168 ms (< 357 fpm) as opposed to only 17 % in patients with shorter cycle lengths (higher rates). Moreover, AF conversion was associated with cycle length prolongation. AF terminated after class I drug administration in 88 %, if the atrial cycle length had been prolonged to > 210 ms (< 285 fpm), in contrast to only 10 % if the post-drug cycle length was shorter.

Finally, there exists a close relation between the degree of electrical remodeling expressed as refractoriness changes and AF recurrence following cardioversion. Manios et al found that patients who failed to shorten the monophasic action potential duration to less than

195 ms at a pacing cycle length of 350 ms were more likely to have AF recurrence¹². This finding was explained by a more abnormal rate adaptation curve, which is in agreement to an early study performed by Attuel and colleagues showing that poor or absent rate adaptation of atrial refractory periods (that is, the normally close correlation between stimulation cycle length and refractory period was lost) is related with vulnerability to AF¹³. These findings have more recently been replicated in patients undergoing internal cardioversion¹⁴. In their study, Biffi et al identified both a shorter atrial effective refractoriness and abnormal rate adaptation as independent predictors for AF relapses, the latter being the strongest predictor.

Prompted by the likely usefulness of non-invasive test that assesses the average fibrillatory rate from the surface ECG for exploration of AF pathophysiology and AF management, frequency analysis techniques were independently introduced by our groups^{15,16}, while two earlier studies proposed to use this technique to subdivide AF and atrial flutter¹⁷ or automatically identify AF among different rhythms¹⁸.

Frequency Analysis Techniques

Methodological Considerations

Using digital recording techniques, traditional ECG signals are recorded. In most studies atrial fibrillatory rate has been obtained by spectral analysis techniques of resting ECG recordings such as standard 12-lead^{15,16} or (modified) orthogonal recordings^{19,20,21}. The method has, however, also been applied to ambulatory ECG recordings using conventional ambulatory leads^{22,23,24}.

The accuracy of frequency analysis techniques strongly relies on the fact that the largest possible fibrillatory waves should be present for further signal processing. Therefore, it was suggested to analyze lead V1 when using a standard ECG or, as proposed previously by Waktare et al²⁵, a “bipolar modification of V1” covering the atria (low C1) when applying different ECG recording systems (e.g. Holter ECG)²⁰.

Since the atrial and ventricular activities overlap spectrally, linear filtering techniques are not suitable for extraction of the fibrillatory signal from the surface ECG. Instead, subtraction of averaged QRST complexes needs to be performed producing a remaining atrial fibrillatory signal for further analysis (**Figure 1**). Originally, a fixed averaged QRST-complex was used for cancellation in individual leads. Further development of the method allowed an improved cancellation of the QRST-complex by taking changes in QRS morphology due to alterations in the electrical axis of the heart into account (spatiotemporal QRST cancellation)²⁶.

Following QRST cancellation, a power spectrum is obtained by using a windowing technique and Fourier analysis to process the remainder ECG. This as well as the associated windowing technique (window type, length and overlap) determine the appearance of the frequency power spectrum¹⁵. Variants of Fourier transform based methods including conventional Fourier analysis and spectral averaging techniques based on short overlapping segments have been applied to ECG segments ranging from 10 seconds to 5 minutes^{15,16,27,28,29}. Typically a distinct spectral peak is obtained which corresponds to the most dominant fibrillatory rate of nearby endocardial sites^{15,16}, but bi- or multimodal peaks are also sometimes observed^{15,30}.

More recently, a time-frequency analysis approach has been developed by which the time-frequency distribution is decomposed into a number of descriptive functions reflecting second-to-second variations in fundamental frequency and waveform morphology^{31,32}. The main advantage of using this approach is that the local signal quality and structure is also assessed. The spectral profile differs from the conventional spectrum in that the different local spectra

have been frequency aligned before averaging. This results in more distinct peaks and a more clearly discernable harmonic structure. With its second-to-second resolution, the method can rapidly detect changes in frequency, regularity, amplitude, waveform and signal structure and quality (Figure 1).

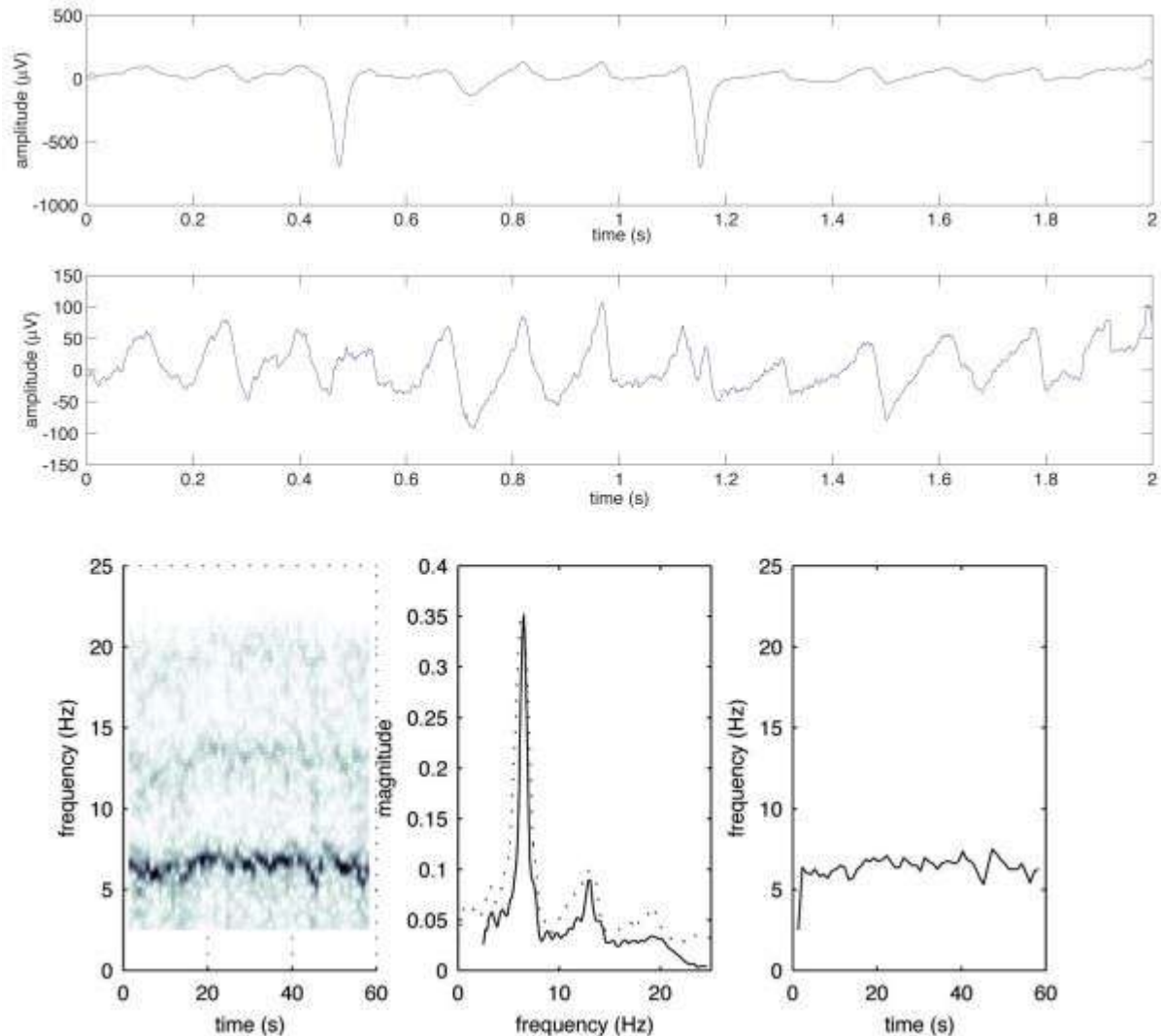


Figure 1: Frequency analysis of AF. Two seconds (out of a 60 second recording) of an ECG signal from a patient with AF (upper panel), and the same interval after QRS cancellation (middle panel, amplitude scale is magnified five times). This fibrillatory signal is then subjected to Fourier analysis. Time-frequency distribution (left box), power frequency spectrum in which the dominant fibrillatory rate is determined (middle box), frequency trend (right box).

To date, the dominant spectral peak has been presented as either dominating atrial cycle length (in ms), fibrillatory rate (in fpm) or fibrillatory frequency (in Hz). Since it has become evident that the results of this method might be of practical clinical importance, we believe that the results should be expressed in a way which is closest to the nomenclature of other surface ECG rate-variables (e.g. sinus rate, atrial tachycardia or flutter rate)³³. The expression “fibrillatory rate”, with its unit “fibrillations per minute - fpm” may therefore be most appropriate²⁰. Moreover, the calculation of cycle length from the frequency power spectrum with its standard unit Hz (cycle length in ms = 1000/frequency in Hz) seems somewhat troublesome³⁴. While this calculation is appropriate for single measurements, its application to multiple Daniela

simultaneous or repeated measurements such as pre- and post-drug states may introduce significant statistical and subsequently scientific errors, especially if the baseline frequency exhibits large inter-individual variability. The reason is, that the same frequency difference results in larger cycle length differences for low frequencies compared to high frequencies.

Method Validation and Reproducibility

A direct comparison between endocardially recorded electrograms and body surface recordings clearly evidences the validity of fibrillatory rate obtained from surface ECG as an index of the average atrial fibrillatory cycle and subsequently atrial refractoriness. Fibrillatory rates calculated from lead V1 substitute the right atrial free wall^{15,16} whilst rates from an oesophageal lead reflect atrial septal and left atrial activity¹⁵. **Figure 2** illustrates the close agreement of right atrial and coronary sinus fibrillatory rates with rates obtained from simultaneously recorded surface ECG lead V1 in persistent AF. Interestingly, rate differences and variability between ECG and electrograms increase with growing anatomical distance (right atrium – coronary sinus – pulmonary veins) to V1. Approximately 50 % of V1 and superior pulmonary vein rates are also within close range. In the other cases, the latter has been found to be substantially faster but also slower than V1 (right atrium), indicating that superior pulmonary veins might not necessarily be the driving source of the fibrillatory process.

Although the gross atrial fibrillatory pattern, studied by multiple simultaneous epicardial recordings, is reproducible already in repeated measurements of only 8 seconds duration³⁵, calculation of fibrillatory rates during steady state conditions from even longer time intervals discloses a true variability. Thus, increasingly longer recording times of up to 30 minutes result in a successive decrease of this variability. The reproducibility of the method is thus enhanced by prolonging the recording time during steady state conditions, allowing integration of atrial fibrillatory activity over longer periods. For practical reasons, steady state recordings may be restricted to one to five minutes, yielding rate variation coefficients of 2.1 %¹⁵.

In persistent AF, there is minor short-term rate variability^{15,16,27} and considerable diurnal variability (for details see below)^{23,24}, whilst repeated daily frequency measurements at identical medication at the same time under similar conditions discloses an insignificant fibrillatory rate variability³⁶. In contrast, rate variability in paroxysmal AF seems to be related to its natural course with a rate increase within the first five minutes of an AF episode²² and a rate decrease prior to termination^{22,28}.

Exploring Autonomic Modulation of AF

Vagal as well as sympathetic stimulation have been shown to reduce atrial refractory periods and increase their heterogeneity^{37,38,39}. In the human atrium beta stimulation has been found to predominate over vagal stimulation³⁸. Moreover, invasive studies performed in subjects with sinus rhythm have suggested a circadian pattern in atrial refractoriness with longer refractory periods during night time and refractory period shortening during daytime^{40,41} which supports the role of the autonomic nervous system in modulating atrial electrophysiologic properties. Subsequently, atrial fibrillatory rate seems to be ideal for monitoring the effect of autonomic tone changes – either spontaneous (circadian) or by autonomic maneuvers provoked – on atrial electrophysiology. Indeed, the circadian variability of atrial fibrillatory rate has been explored in independent studies^{23,24}. Fibrillatory rate obtained from Holter ECG's with persistent AF showed a significant decrease at night and an increase in the morning hours^{23,24}. In 6 out of 30 individuals studied by our group²³, dominant nocturnal fibrillatory rate increased, however, concomitantly with a decrease in ventricular rate, while the opposite change occurred in the morning hours.

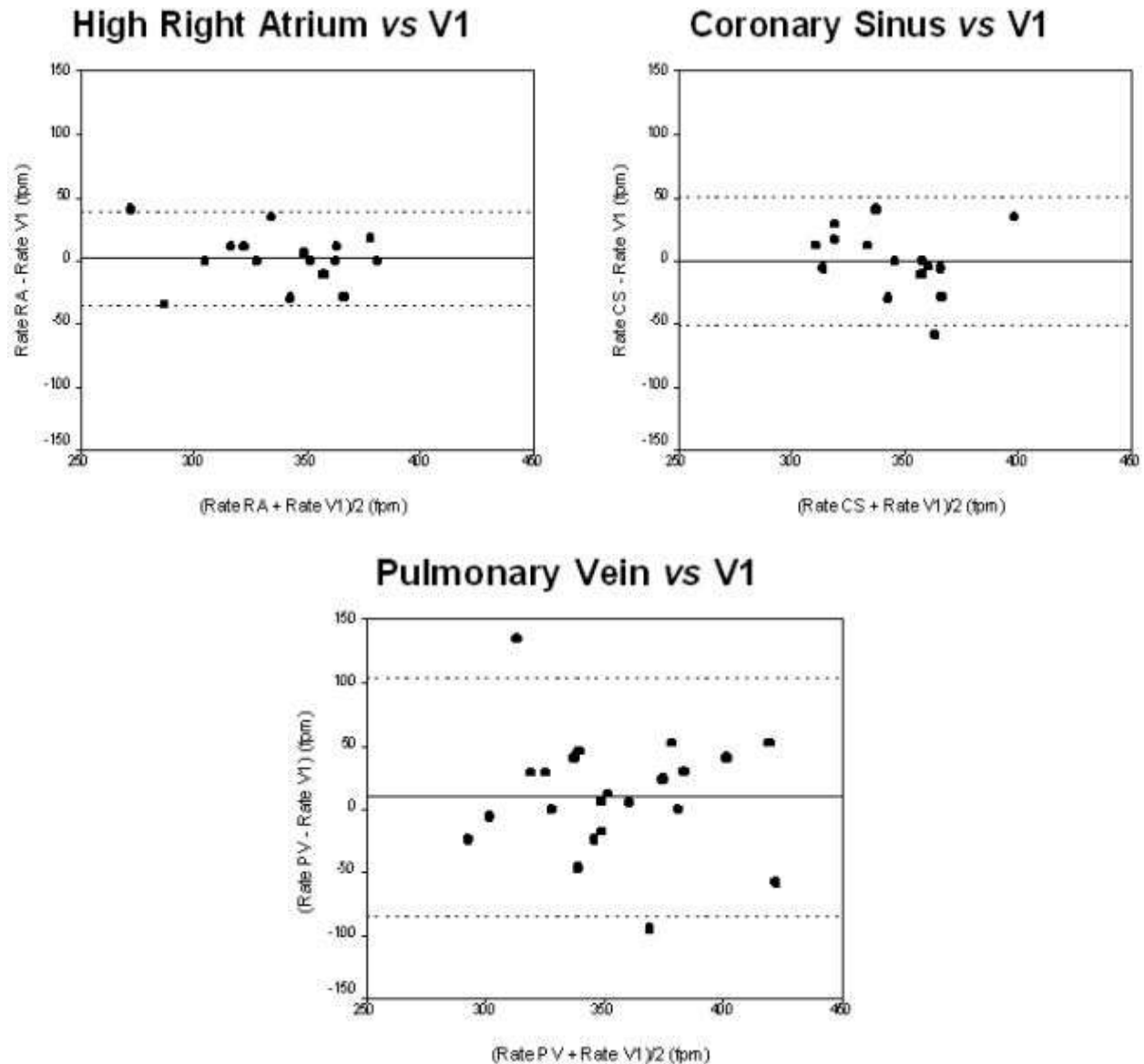


Figure 2: Agreement of fibrillatory rates from the right atrium (upper left), coronary sinus (upper right), superior pulmonary veins (lower) with simultaneously recorded fibrillatory rates from surface ECG lead V1 (Bland-Altman method).

The second area of investigation concerns effects on atrial fibrillatory rate following vagal or sympathetic stimulation during experimental conditions. Carotid sinus massage, supposed to mainly induce vagal stimulation, resulted in a variable effect on fibrillatory rate in 19 patients⁴². A reproducible decrease was noted in 9 individuals, whilst a rate increase occurred in 8 and no change was observed in two patients. Interestingly, calcium-channel blocker treatment was the only variable effecting the rate response to carotid sinus massage. Calcium-channel blockers were more frequently used in patients with a decrease in fibrillatory rate compared to patients with a rate increase. The effect of adrenergic stimulation via head-up tilting on fibrillatory rate was studied in 14 patients with long-lasting AF⁴³. In 12 patients head-up tilting increased fibrillory rate significantly, while there was no rate change in the remaining two.

With the availability of instantaneous fibrillatory rates obtained from time-frequency

analysis, their second-to-second variation can be explored by spectral analysis techniques, similar to those used for analyzing heart rate variability. By applying this approach, Stridh et al⁴⁴ noted a spectral peak in 2 out of 8 patients with permanent AF at the breathing frequency of 0.125 Hz during controlled respiration that disappeared after atropine injection.

All these findings together clearly highlight the complexity of autonomous nervous system effects on atrial electrophysiology and justify further exploration.

Monitoring and Predicting Antiarrhythmic Drug Effects

Class I and III antiarrhythmic drugs have been shown to increase atrial cycle length (decrease fibrillatory rate) which coincides with increased refractoriness and decreased conduction velocity⁴⁵. These mixed effects might explain why atrial cycle length is closely related with baseline refractoriness⁶ but not with refractoriness after antiarrhythmic drug administration⁴⁶. Even though the individual contribution of refractoriness prolongation or conduction slowing might currently not be differentiated, monitoring drug action on atrial fibrillatory rate seems well fit to be explored by analysing the surface ECG. Indeed, a substantial reduction in atrial fibrillatory rates following several different intravenously or orally administered class I and III antiarrhythmic drugs as well as following verapamil or magnesium has been observed (Table 1).

Table 1. Summary of available literature on frequency analysis techniques (for details see text).

Primary Investigator	Bollmann	Olsson	Stridh & Sornmo	Others
Investigation				
Validation	Comparison with intracardiac EGM (N=54) ¹⁶	Comparison with intracardiac and esophageal EGM (N=8) ¹⁵		Comparison with asystolic ECG segment (N=12) ²⁷
Method improvement			Spatiotemporal QRST cancellation ²⁶ Time-frequency analysis ^{31,32}	
Reproducibility	Short-term (N=6) ¹⁶	Short-term (N=10) ¹⁵ Long-term (N=10) ³⁶		Short-term (N=5) ²⁷
Circadian rate variation	Every 6 hours (N=30) ²³	Every hour (N=20) ²⁴		
Spontaneous AF termination	Onset vs. mid-episode vs. termination (N=11) ²²			10 min before termination vs. termination (N=19) ²⁸
Monitoring and predicting atrial drug effects	i.v. ibutilide (N=15) ¹⁶ p.o. amiodarone (N=5) ²² p.o. sotalol (N=3) ²² p.o. flecainide (N=18) ¹⁹ p.o. verapamil (N=27) ⁶²	i.v. sotalol (N=5) ¹⁵ p.o. verapamil (N=10) ³⁶ i.v. MgSO4 (+GIK) (N=13) ⁶³		i.v. cibenzoline (N=5) ²⁸ i.v. procainamide (N=3) ²⁸ p.o. bepidril (N=22) ²⁹ i.v. ibutilide (N=19) ⁶⁴
Monitoring autonomic maneuvers	Carotid sinus massage (N=19) ⁴²	Head-up tilt test (N=14) ⁴³	Controlled breathing + i.v. atropine (N=8) ⁴⁴	
Predicting ADFT	Internal CV (N=19) ⁵⁷			External CV (N=29) ⁵⁸
Predicting AF recurrence	Internal CV (N=19) ⁵⁷ External, internal or drug-induced CV (N=44) ²¹			
Heart rhythm differentiation				Sinus rhythm vs. atrial fibrillation ¹⁸

CV = cardioversion, EGM = electrogram, GIK = glucose, insulin, potassium, ADFT = atrial defibrillation threshold

Two examples of drug monitoring are presented in **Figure 3** showing the transition from a high rate (less organized) to a low rate (more organized) fibrillation following acute intravenous sotalol infusion or 3-day oral flecainide administration.

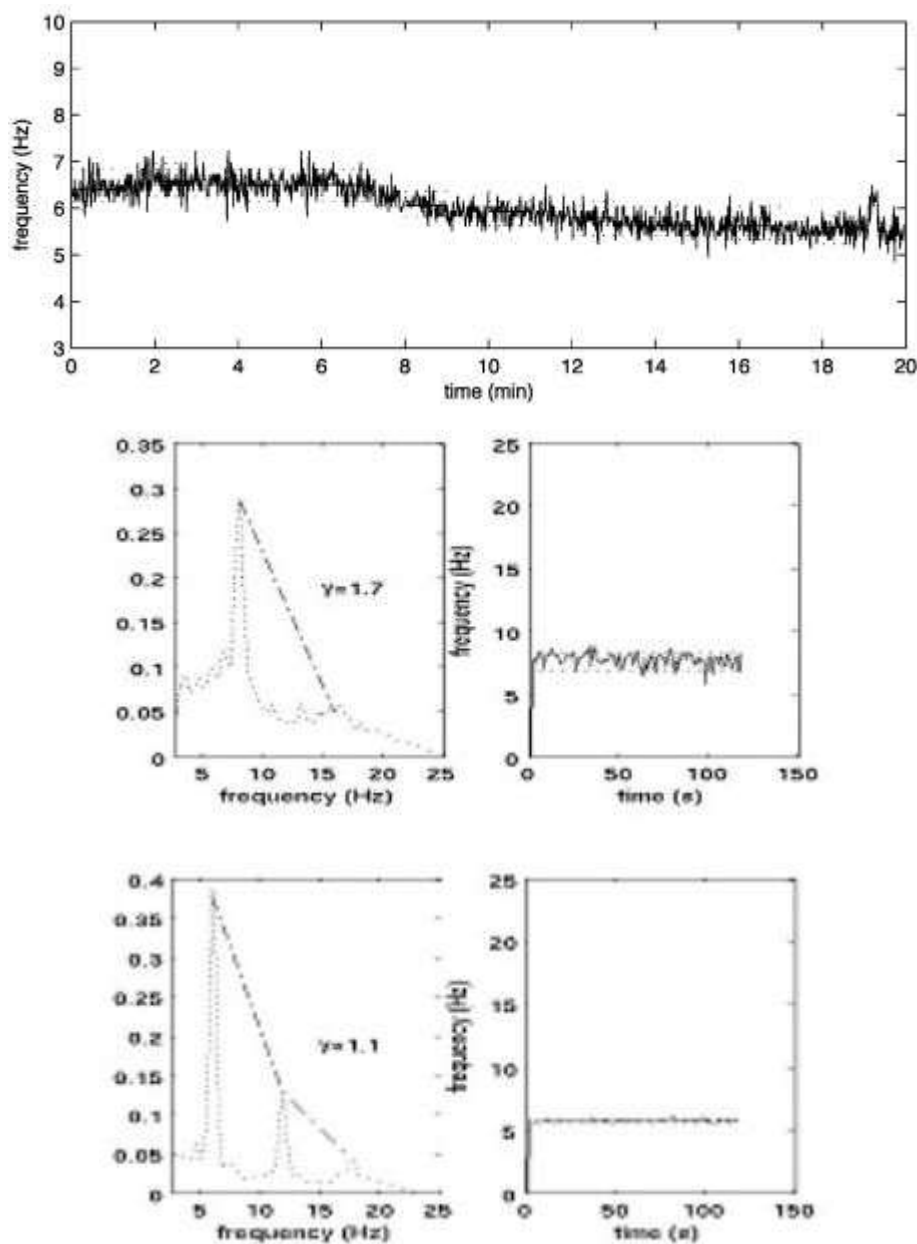


Figure 3: Examples of antiarrhythmic drug monitoring. Atrial fibrillatory rate obtained from time-frequency-analysis during **intravenous infusion of dl-sotalol**. The solid black colour indicates the actual fibrillatory rate. Initially, the atrial rate is at the level of 390 fpm (6.5 Hz), but decreases successively to the level of 330 fpm (5.5 Hz) during 20 minutes (upper panel). Time-Frequency-analysis at baseline (middle) and after 3-days **oral flecainide** intake (bottom). Frequency power spectrum (left) and frequency trend (right). Please note the more pronounced dominant and harmonic peaks after drug administration as well as atrial rate reduction and rate stabilization.

Besides direct monitoring of antiarrhythmic drug effects, it seems also possible to identify suitable patients for pharmacological cardioversion. A baseline fibrillatory rate of 360 fpm was highly sensitive and specific for prediction of AF termination following intravenous

ibutilide¹⁶ or oral flecainide¹⁹ (Figure 4). In contrast, Fujiki et al noted no baseline fibrillatory rate difference between patients who converted to sinus rhythm and those who did not following oral bepridil administration. Instead, larger rate increases were associated with AF termination. While this concept is interesting and well established in experimental AF⁴⁵, it needs to be emphasized that these authors calculated atrial cycle length from the frequency spectrum, which may have introduced the aforementioned statistical errors³⁴.

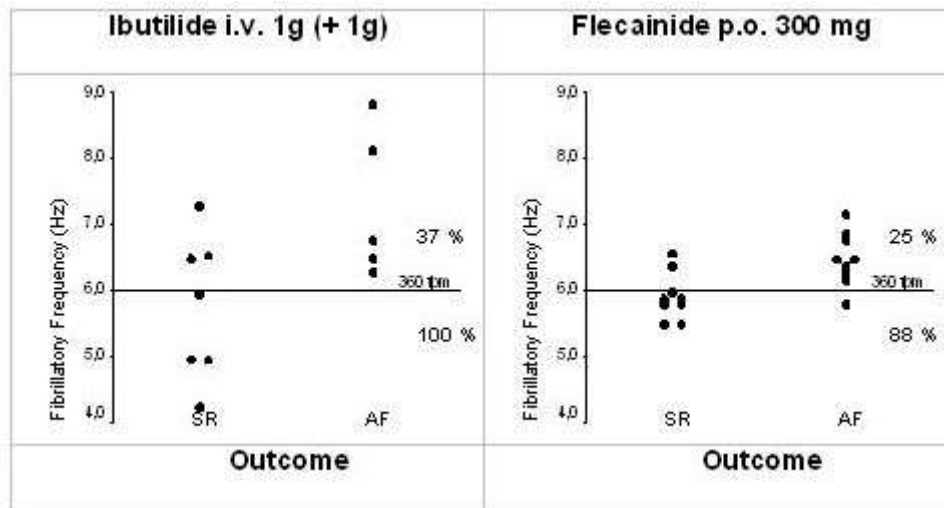


Figure 4: Relation between baseline fibrillatory rate and response to intravenous ibutilide (left)¹⁶ and oral flecainide (right)¹⁹. AF with slower rates is more likely to respond to antiarrhythmic drug therapy, while faster rates are more often found in drug-refractory AF.

Patients with a low fibrillatory rate may have a small number of wavelets (long wavelength), whereas those with higher rates have multiple wavelets (short wavelength)⁷. In the former group class I or III antiarrhythmic drugs by decreasing fibrillatory rate may have increased wavelength (or the excitable gap) and therefore reduced the number of wavelets that could coexist. This would have increased the statistical chance that all wavelets might extinguish simultaneously and terminate the fibrillatory process⁴⁷.

One previous study suggested that a stepped conversion regimen of first-line ibutilide followed by electrical cardioversion for patients who fail to convert is less expensive and has a higher conversion rate than first-line electrical cardioversion⁴⁸. Given the expense of antiarrhythmic therapy and the risk of side effects including ventricular proarrhythmia, a test that differentiates responders from non-responders is likely to be even more cost-effective. In addition, drug monitoring using frequency analysis techniques may be useful for finding optimal drug dosages and timing of interventions in the individual patient.

Predicting AF Recurrence

Previous investigations^{49,50} have shown that most AF relapses occur within the first weeks after cardioversion with decreased but constant recurrence rates thereafter. Early vulnerability to AF re-initiation within this time period is related to electrophysiological abnormalities, while structural abnormalities seem to be primarily responsible for later AF recurrences⁵¹. This time course might be explained by the fact that reversal of the electrical remodeling process occurs rapidly once sinus rhythm is restored^{12,52,53}, while structural changes persist for longer periods⁵¹. Subsequently, characterization of atrial electrophysiology has been suggested for identification of patients at risk for early AF recurrence².

Atrial premature beats with short coupling intervals have been shown to promote early AF reinitiation following cardioversion^{54,55}. AF reinduction by an atrial premature beat relies on the fact that a relatively short atrial wavelength (conduction velocity x refractory period) must be present⁵⁶. As highlighted before, atrial fibrillatory rate reflects atrial refractoriness^{5,6}, and might subsequently represent a marker for early AF susceptibility following restoration of sinus rhythm. Indeed, previous studies reported higher rates in relapsed patients immediately prior internal⁵⁷ or external cardioversion²¹ when compared with non-relapsed patients and also close relationships between fibrillatory rate and defibrillation thresholds^{57,58}.

Two previous studies^{21,59} have investigated the combined predictive value of fibrillatory rate and echocardiographic left atrial parameters. In one study⁵⁹, the authors calculated an index combining shortest cycle length from oesophageal or V1 lead and standard left atrial diameter and were able to show that patients with recurring AF had significantly lower values than patients who remained in sinus rhythm. Another study²¹ demonstrated that the combination of fibrillatory rate and systolic left atrial area predicted early AF recurrence after successful cardioversion with a high accuracy and was able to provide individual risk estimates (**Figure 5**).

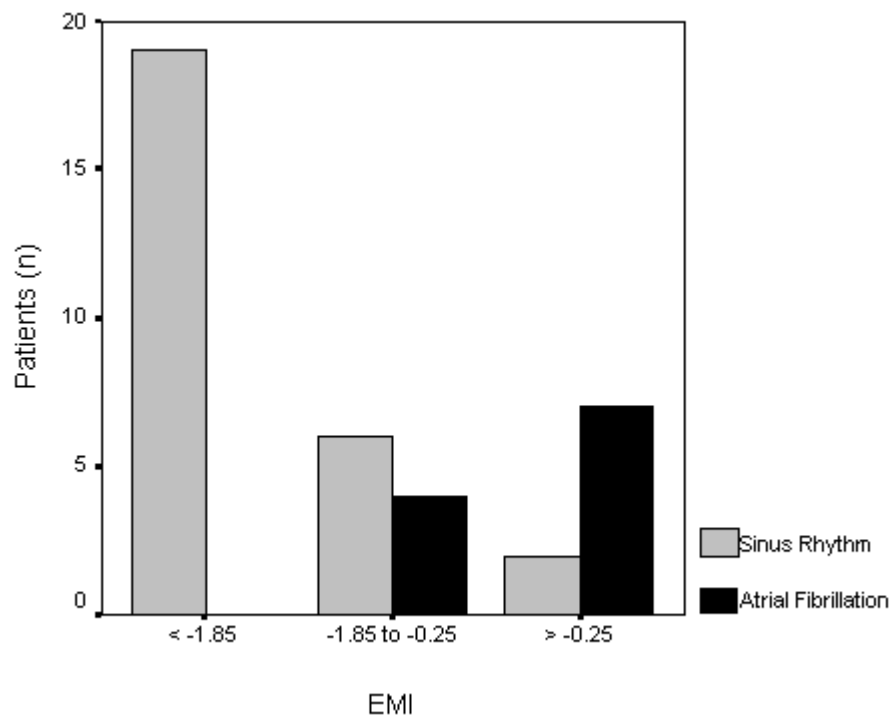


Figure 5: Outcome following cardioversion stratified by an “electromechanical index” (EMI) according to the regression equation ($EMI = 0.176 \text{ systolic left atrial area} + 0.029 \text{ fibrillatory rate} - 17.674$)²¹.

These parameters seem therefore well suited to describe the individual atrial remodeling. The concept of ECG-guided cardioversion may gain even greater importance in the light of previous findings from two studies comparing rate- with rhythm-control strategies^{60,61}. In these studies, rhythm-control seemed not to be superior than rate-control in asymptomatic, mostly elderly patients with recurring AF and structural heart disease. This highlights the need to select candidates for cardioversion not only based on clinical judgement but also on measures that are able to determine the likelihood of maintaining sinus rhythm such as rate parameters obtained from the surface ECG.

Conclusions

Atrial fibrillatory rate and its variability can be reliably obtained from the surface ECG in AF patients using spectral analysis techniques. These parameters exhibit a significant interindividual variability allowing individual quantification of the atrial electrical remodeling process. Frequency analysis of AF might prove useful in identification of underlying AF pathomechanisms, and prediction of therapy efficacy (drug-induced conversion, maintenance of sinus rhythm, selecting antiarrhythmic drugs, identifying candidates for non-pharmacological AF therapy). Further larger studies are necessary to determine the role of these techniques in different AF management strategies in order to select and time the appropriate therapy for the individual patient.

References

1. Fuster V, Ryden LE, Asinger RW, et al. ACC/AHA/ESC Guidelines for the Management of Patients With Atrial Fibrillation: Executive Summary A Report of the American College of Cardiology/American Heart Association Task Force on Practice Guidelines and the European Society of Cardiology Committee for Practice Guidelines and Policy Conferences (Committee to Develop Guidelines for the Management of Patients With Atrial Fibrillation) Developed in Collaboration With the North American Society of Pacing and Electrophysiology. *Circulation*. 2001;104:2118-50.
2. Bollmann A. Quantification of electrical remodeling in human atrial fibrillation. *Cardiovasc Res*. 2000;47:207-209.
3. Wijffels MC, Kirchhof CJ, Dorland R, et al. Atrial fibrillation begets atrial fibrillation. A study in awake chronically instrumented goats. *Circulation*. 1995;92:1954-68.
4. Kim KB, Rodefeld MD, Schuessler RB, et al. Relationship between local atrial fibrillation interval and refractory period in the isolated canine atrium. *Circulation*. 1996;94:2961-7.
5. Ramdat Misier AR, Opthof T, van Hemel NM, et al. Increased dispersion of "refractoriness" in patients with idiopathic paroxysmal atrial fibrillation. *J Am Coll Cardiol*. 1992;19:1531-5.
6. Capucci A, Biffi M, Boriani G, et al. Dynamic electrophysiological behavior of human atria during paroxysmal atrial fibrillation. *Circulation*. 1995;92:1193-202.
7. Konings KT, Kirchhof CJ, Smeets JR, et al. High-density mapping of electrically induced atrial fibrillation in humans. *Circulation*. 1994;89:1665-80.
8. Asano Y, Saito J, Matsumoto K, et al. On the mechanism of termination and perpetuation of atrial fibrillation. *Am J Cardiol*. 1992;69:1033-8.
9. Boahene KA, Klein GJ, Yee R, et al. Termination of acute atrial fibrillation in the Wolff-Parkinson-White syndrome by procainamide and propafenone: importance of atrial fibrillatory cycle length. *J Am Coll Cardiol*. 1990;16:1408-14.
10. Stambler BS, Wood MA, Ellenbogen KA. Antiarrhythmic actions of intravenous ibutilide compared with procainamide during human atrial flutter and fibrillation: electrophysiological determinants of enhanced conversion efficacy. *Circulation*. 1997;96:4298-306.

11. Fujiki A, Nagasawa H, Sakabe M, et al. Spectral characteristics of human atrial fibrillation waves of the right atrial free wall with respect to the duration of atrial fibrillation and effect of class I antiarrhythmic drugs. *Jpn Circ J.* 2001;65:1047-51.
12. Manios EG, Kanoupakis EM, Chlouverakis GI, et al. Changes in atrial electrical properties following cardioversion of chronic atrial fibrillation: relation with recurrence. *Cardiovasc Res.* 2000;47:244 - 53.
13. Attuel P, Childers R, Cauchemez B, et al. Failure in the rate adaptation of the atrial refractory period: its relationship to vulnerability. *Int J Cardiol.* 1982;2:179-97.
14. Biffi M, Boriani G, Bartolotti M, et al. Atrial fibrillation recurrence after internal cardioversion: prognostic importance of electrophysiological parameters. *Heart.* 2002;87:443-448.
15. Holm M, Pehrson S, Ingemansson M, et al. Non-invasive assessment of the atrial cycle length during atrial fibrillation in man: introducing, validating and illustrating a new ECG method. *Cardiovasc Res.* 1998;38:69-81.
16. Bollmann A, Kanuru NK, McTeague KK, et al. Frequency analysis of human atrial fibrillation using the surface electrocardiogram and its response to ibutilide. *Am J Cardiol.* 1998;81:1439-45.
17. Rosenbaum DS, Cohen RJ. Frequency based measures of atrial fibrillation in man. *IEEE-EMBS.* 1990;12:582-3.
18. Slocum J, Sahakian A, Swiryn S. Diagnosis of atrial fibrillation from surface electrocardiograms based on computer-detected atrial activity. *J Electrocardiol.* 1992;25:1-8.
19. Bollmann A, Binias KH, Toepffer I, et al. Importance of left atrial diameter and atrial fibrillatory frequency for conversion of persistent atrial fibrillation with oral flecainide. *Am J Cardiol.* 2002;90:1011-14.
20. Bollmann A, Husser D, Stridh M, et al. Frequency measures obtained from the surface electrocardiogram in atrial fibrillation research and clinical decision-making. *J Cardiovasc Electrophysiol.* 2003;14:S154-S161.
21. Bollmann A, Husser D, Steinert R, et al. Echo- and electrocardiographic predictors for atrial fibrillation recurrence following cardioversion. *J Cardiovasc Electrophysiol.* 2003;14:S162-S165.
22. Bollmann A, Sonne K, Esperer HD, et al. Non-invasive assessment of fibrillatory activity in patients with paroxysmal and persistent atrial fibrillation using the Holter ECG. *Cardiovasc Res.* 1999;44:60-6.
23. Bollmann A, Sonne K, Esperer HD, et al. Circadian variations in atrial fibrillatory frequency in persistent human atrial fibrillation. *Pacing Clin Electrophysiol.* 2000;23:1867-71.
24. Meurling CJ, Waktare JE, Holmqvist F, et al. Diurnal variations of the dominant cycle length of chronic atrial fibrillation. *Am J Physiol Heart Circ Physiol.* 2001;280:H401-6.

25. Waktare JE, Gallagher MM, Murtagh AM, et al. Optimum lead positioning for recording bipolar atrial electrocardiograms during sinus rhythm and atrial fibrillation. *Clin Cardiol.* 1998;21:825-30.
26. Stridh M, Sornmo L. Spatiotemporal QRST cancellation techniques for analysis of atrial fibrillation. *IEEE Trans Biomed Eng.* 2001;48:105-11.
27. Xi Q, Sahakian AV, Swiryn S. The effect of QRS cancellation on atrial fibrillatory wave signal characteristics in the surface electrocardiogram. *J Electrocardiol.* 2003;36:243-49.
28. Fujiki A, Sakabe M, Nishida K, et al. Role of fibrillation cycle length in spontaneous and drug-induced termination of human atrial fibrillation - spectral analysis of fibrillation waves from surface electrocardiogram. *Circ J.* 2003;67:391-395.
29. Fujiki A, Tsuneda T, Sugao M, et al. Usefulness and safety of bepridil in converting persistent atrial fibrillation to sinus rhythm. *Am J Cardiol.* 2003;92:472-475.
30. Pehrson S, Holm M, Meurling C, et al. Non-invasive assessment of magnitude and dispersion of atrial cycle length during chronic atrial fibrillation in man. *Eur Heart J.* 1998;19:1836-44.
31. Stridh M, Sornmo L, Meurling CJ, et al. Characterization of atrial fibrillation using the surface ECG: time-dependent spectral properties. *IEEE Trans Biomed Eng.* 2001;48:19-27.
32. Stridh M, Sornmo L, Meurling CJ, et al. Sequential characterization of atrial tachyarrhythmias based on ECG time-frequency analysis. *IEEE Trans Biomed Eng.* 2004;51:100-14.
33. Saoudi N, Cosio F, Waldo A, et al. A classification of atrial flutter and regular atrial tachycardia according to electrophysiological mechanisms and anatomical bases. *Eur Heart J.* 2001;22:1162 - 82.
34. Bollmann A, Husser D, Olsson SB. Atrial fibrillatory frequency, atrial fibrillatory rate or atrial cycle length - does it matter? *Am J Cardiol.* 2004;in press.
35. Holm M, Johansson R, Brandt J, et al. Epicardial right atrial free wall mapping in chronic atrial fibrillation. Documentation of repetitive activation with a focal spread--a hitherto unrecognised phenomenon in man. *Eur Heart J.* 1997;18:290-310.
36. Meurling CJ, Ingemansson MP, Roijer A, et al. Attenuation of electrical remodelling in chronic atrial fibrillation following oral treatment with verapamil. *Europace.* 1999;1:234-41.
37. Prystowsky EN, Naccarelli GV, Jackman WM, et al. Enhanced parasympathetic tone shortens atrial refractoriness in man. *Am J Cardiol.* 1983;51:96-100.
38. Shimizu W, Tsuchioka Y, Karakawa S, et al. Differential effect of pharmacological autonomic blockade on some electrophysiological properties of the human ventricle and atrium. *Br Heart J.* 1994;71:34-7.
39. Leitch JW, Basta M, Fletcher PJ. Effect of phenylephrine infusion on atrial electrophysiological properties. *Heart.* 1997;78:166-70.

40. Cinca J, Moya A, Figueras J, et al. Circadian variations in the electrical properties of the human heart assessed by sequential bedside electrophysiologic testing. *Am Heart J*. 1986;112:315-21.
41. Huikuri HV, Yli-Mayry S, Linnaluoto MK, et al. Diurnal fluctuations in human ventricular and atrial refractoriness. *Pacing Clin Electrophysiol*. 1995;18:1362-8.
42. Bollmann A, Wodarz K, Esperer HD, et al. Response of atrial fibrillatory activity to carotid sinus massage in patients with atrial fibrillation. *Pacing Clin Electrophysiol*. 2001;24:1363-8.
43. Ingemansson MP, Holm M, Olsson SB. Autonomic modulation of the atrial cycle length by the head up tilt test: non-invasive evaluation in patients with chronic atrial fibrillation. *Heart*. 1998;80:71-6.
44. Stridh M, Meurling C, Olsson SB, et al. Detection of autonomic modulation in permanent atrial fibrillation. *Med Biol Eng Comput*. 2003;41:625-9.
45. Wijffels MC, Dorland R, Mast F, et al. Widening of the excitable gap during pharmacological cardioversion of atrial fibrillation in the goat: effects of cibenzoline, hydroquinidine, flecainide, and d-sotalol. *Circulation*. 2000;102:260-7.
46. Fynn SP, Todd DM, Hobbs WJC, et al. Effect of amiodarone on dispersion of atrial refractoriness and cycle length in patients with atrial fibrillation. *J Cardiovasc Electrophysiol*. 2003;14:485-91.
47. Wang J, Bourne GW, Wang Z, et al. Comparative mechanisms of antiarrhythmic drug action in experimental atrial fibrillation. Importance of use-dependent effects on refractoriness. *Circulation*. 1993;88:1030-44.
48. Zarkin GA, Bala MV, Calingaert B, et al. The cost-effectiveness of ibutilide versus electrical cardioversion in the conversion of atrial fibrillation and flutter to normal rhythm. *Am J Manag Care*. 1997;3:1387-94.
49. Tieleman RG, Van Gelder IC, Crijns HJ, et al. Early recurrences of atrial fibrillation after electrical cardioversion: a result of fibrillation-induced electrical remodeling of the atria? *J Am Coll Cardiol*. 1998;31:167-73.
50. Lombardi F, Colombo A, Basilico B, et al. Heart rate variability and early recurrence of atrial fibrillation after electrical cardioversion. *J Am Coll Cardiol*. 2001;37:157-62.
51. Everett 4th TH, Li H, Mangrum JM, et al. Electrical, morphological, and ultrastructural remodeling and reverse remodeling in a canine model of chronic atrial fibrillation. *Circulation*. 2000;102:1454-1460.
52. Yu WC, Lee SH, Tai CT, et al. Reversal of atrial electrical remodeling following cardioversion of long-standing atrial fibrillation in man. *Cardiovasc Res*. 1999;42:470-6.
53. Sato T, Mitamura H, Kurita Y, et al. Recovery of electrophysiological parameters after conversion of atrial fibrillation. *Int J Cardiol*. 2001;79:183-189.
54. Sra J, Biehl M, Blanck Z, et al. Spontaneous reinitiation of atrial fibrillation following

transvenous atrial defibrillation. *Pacing Clin Electrophysiol.* 1998;21:1105-10.

55. Timmermans C, Rodriguez LM, Smeets JL, et al. Immediate reinitiation of atrial fibrillation following internal atrial defibrillation. *J Cardiovasc Electrophysiol.* 1998;9:122-8.

56. Smeets JL, Allessie MA, Lammers WJ, et al. The wavelength of the cardiac impulse and reentrant arrhythmias in isolated rabbit atrium. The role of heart rate, autonomic transmitters, temperature, and potassium. *Circ Res.* 1986;58:96-108.

57. Bollmann A, Mende M, Neugebauer A, et al. Atrial fibrillatory frequency predicts atrial defibrillation threshold and early arrhythmia recurrence in patients undergoing internal cardioversion of persistent atrial fibrillation. *Pacing Clin Electrophysiol.* 2002;25:1179-84.

58. Tai CT, Chen SA, Liu AS, et al. Spectral analysis of chronic atrial fibrillation and its relation to minimal defibrillation energy. *Pacing Clin Electrophysiol.* 2002;25:1747-51.

59. Meurling CJ. Atrial fibrillation. Modulation of the atrial fibrillatory frequency. A non-invasive approach. Thesis. Rahms i Lund Tryckeri AB. 2000.

60. Wyse DG, Waldo AL, DiMarco JP, et al. A comparison of rate control and rhythm control in patients with atrial fibrillation. *N Engl J Med.* 2002;347:1825-33.

61. Van Gelder IC, Hagens VE, Bosker HA, et al. A comparison of rate control and rhythm control in patients with recurrent persistent atrial fibrillation. *N Engl J Med.* 2002;347:1834-40.

62. Bollmann A, Sonne K, Esperer HD, et al. Patients with persistent atrial fibrillation taking oral verapamil exhibit a lower atrial frequency on the ECG. *Ann Noninvasive Electrocardiol.* 2002;7:92-7.

63. Ingemansson MP, Smideberg B, Olsson SB. Intravenous MgSO₄ alone and in combination with glucose, insulin and potassium (GIK) prolongs the atrial cycle length in chronic atrial fibrillation. *Europace.* 2000;2:106-14.

64. Schwartz RA, Langberg JJ. Atrial electrophysiological effects of ibutilide infusion in humans. *Pacing Clin Electrophysiol.* 2000;23:832-6.