



LUND UNIVERSITY

Regulation of cysteinyl leukotriene receptor 2 expression-a potential anti-tumor mechanism.

Magnusson, Cecilia; Bengtsson, Astrid; Liu, Minghui; Liu, Jian; Ceder, Yvonne; Ehrnström, Roy; Sjölander, Anita

Published in:
PLoS ONE

DOI:
[10.1371/journal.pone.0029060](https://doi.org/10.1371/journal.pone.0029060)

2011

[Link to publication](#)

Citation for published version (APA):

Magnusson, C., Bengtsson, A., Liu, M., Liu, J., Ceder, Y., Ehrnström, R., & Sjölander, A. (2011). Regulation of cysteinyl leukotriene receptor 2 expression-a potential anti-tumor mechanism. *PLoS ONE*, 6(12), Article e29060. <https://doi.org/10.1371/journal.pone.0029060>

Total number of authors:
7

General rights

Unless other specific re-use rights are stated the following general rights apply:
Copyright and moral rights for the publications made accessible in the public portal are retained by the authors and/or other copyright owners and it is a condition of accessing publications that users recognise and abide by the legal requirements associated with these rights.

- Users may download and print one copy of any publication from the public portal for the purpose of private study or research.
- You may not further distribute the material or use it for any profit-making activity or commercial gain
- You may freely distribute the URL identifying the publication in the public portal

Read more about Creative commons licenses: <https://creativecommons.org/licenses/>

Take down policy

If you believe that this document breaches copyright please contact us providing details, and we will remove access to the work immediately and investigate your claim.

LUND UNIVERSITY

PO Box 117
221 00 Lund
+46 46-222 00 00

Regulation of Cysteinyl Leukotriene Receptor 2 Expression—A Potential Anti-Tumor Mechanism

Cecilia Magnusson¹, Astrid M. Bengtsson¹, Minghui Liu¹, Jian Liu¹, Yvonne Ceder³, Roy Ehrnström², Anita Sjölander^{1*}

1 Cell and Experimental Pathology, Department of Laboratory Medicine, Lund University, Skånes University Hospital, Malmö, Sweden, **2** Pathology, Department of Laboratory Medicine, Lund University, Skånes University Hospital, Malmö, Sweden, **3** Clinical Chemistry, Department of Laboratory Medicine, Lund University, Skånes University Hospital, Malmö, Sweden

Abstract

Background: The cysteinyl leukotrienes receptors (CysLTRs) are implicated in many different pathological conditions, such as inflammation and cancer. We have previously shown that colon cancer patients with high CysLT₁R and low CysLT₂R expression demonstrate poor prognosis. Therefore, we wanted to investigate ways for the transcriptional regulation of CysLT₂R, which still remains to be poorly understood.

Methodology/Principal Findings: We investigated the potential role of the anti-tumorigenic interferon α (IFN- α) and the mitogenic epidermal growth factor (EGF) on CysLT₂R regulation using non-transformed intestinal epithelial cell lines and colon cancer cells to elucidate the effects on the CysLT₂R expression and regulation. This was done using Western blot, qPCR, luciferase reporter assay and a colon cancer patient array. We found a binding site for the transcription factor IRF-7 in the putative promoter region of CysLT₂R. This site was involved in the IFN- α induced activity of the CysLT₂R luciferase reporter assay. In addition, IFN- α induced the activity of the differentiation marker alkaline phosphatase along with the expression of mucin-2, which protects the epithelial layer from damage. Interestingly, EGF suppressed both the expression and promoter activity of the CysLT₂R. E-boxes present in the CysLT₂R putative promoter region were involved in the suppressing effect. CysLT₂R signaling was able to suppress cell migration that was induced by EGF signaling.

Conclusions/Significance: The patient array showed that aggressive tumors generally expressed less IFN- α receptor and more EGFR. Interestingly, there was a negative correlation between CysLT₂R and EGFR expression. Our data strengthens the idea that there is a protective role against tumor progression for CysLT₂R and that it highlights new possibilities to regulate the CysLT₂R.

Citation: Magnusson C, Bengtsson AM, Liu M, Liu J, Ceder Y, et al. (2011) Regulation of Cysteinyl Leukotriene Receptor 2 Expression—A Potential Anti-Tumor Mechanism. PLoS ONE 6(12): e29060. doi:10.1371/journal.pone.0029060

Editor: Patricia T. Bozza, Fundação Oswaldo Cruz, Brazil

Received: June 14, 2011; **Accepted:** November 20, 2011; **Published:** December 15, 2011

Copyright: © 2011 Magnusson et al. This is an open-access article distributed under the terms of the Creative Commons Attribution License, which permits unrestricted use, distribution, and reproduction in any medium, provided the original author and source are credited.

Funding: This work was supported by grants for AS from the Swedish Cancer Foundation (www.cancerfonden.se), the Swedish Medical Research Council (www.vr.se), the Foundations at Skanes University Hospital, Gunnar Nilsson Foundation (www.cancerstiftelsen.com), the Österlund Foundation (www.medmicro.se/stiftelse.htm), and for CM and AMB from the Royal Physiographic Society in Lund (www.fysiografen.se). The funders had no role in study design, data collection and analysis, decision to publish, or preparation of the manuscript.

Competing Interests: The authors have declared that no competing interests exist.

* E-mail: anita.sjolander@med.lu.se

Introduction

Prolonged inflammation is known to increase the risk of developing cancer [1,2]. It has been estimated that 15% of all cancers can be accredited to infectious agents [3]. Tumor microenvironment has often been associated with infiltrating leukocytes in the tumor tissue and the surrounding stroma [4]. Moreover, patients with ulcerative colitis display a 30 to 50% increased risk of developing colon cancer [5]. Elevated levels of inflammatory mediators, such as the cysteinyl leukotrienes (cysLTs), have been found in these patients [6]. CysLTs is the collective name for LTC₄, LTD₄ and LTE₄. They are lipid mediators derived from arachidonic acid through the 5-lipoxygenase (5-LO) pathway [7]. In addition to inflammatory bowel disease (IBD) [7], they have been implicated in the pathogenesis of several chronic inflammatory diseases, such as asthma, pulmonary fibrosis, and atherosclerosis [8,9]. The known biological effects of

cysLTs are mediated through two different G-protein coupled receptors (GPCRs): CysLT₁R [10], which is the high affinity receptor for LTD₄ and CysLT₂R [11], which is the high affinity receptor for LTC₄. Recently, an orphan GPCR denoted as GPR17 was found to be an additional receptor for cysLTs. GPR17 can also be activated by uracil nucleotides [12]. There is a 38% sequence similarity between CysLT₁R and CysLT₂R and they are both able to induce calcium release upon activation [13,14]. However, they do not appear to be functionally interchangeable and they might even antagonize each other's actions. For example, CysLT₂R has been found to inhibit CysLT₁R-induced proliferation in mast cells [15]. Colon tumors generally have an increased expression of CysLT₁R [16] and a decreased expression of CysLT₂R [17]. It has also been observed that colon cancer patients with high expression levels of CysLT₁R have poor prognosis. Similar results are also seen in patients with breast cancer [18]. CysLT₂R has, on the other hand, been implicated in

the differentiation of Caco-2 cells [17] and is involved in vascular permeability [19]. This indicates that CysLT₂R has a more protective role in cancer development while CysLT₁R favors tumor progression.

Interferons (IFNs) are part of our defense system against viruses, bacteria, parasites, and malignant cells [20]. Both type I (for example IFN- α and IFN- β), and type II (IFN- γ) IFNs are produced during the early innate immune response. However, while IFN- γ is secreted mainly by natural killer cells and T-cells, the type I IFNs are produced by most cell types following virus infection or toll-like receptor activation [21]. IFN activation results in the increased activity of the transcription factor interferon regulatory factor 7 (IRF-7), which is involved in a positive feedback loop to augment a larger induction of IFN- α and IFN- β genes [22]. Even though both types of IFNs have been implicated to have anti-carcinogenic effects, the type I IFNs exhibit stronger anti-proliferative and anti-angiogenic effects and have been proposed to have apoptotic effects on cancer cells [23,24]. In a mouse model, the type I IFNs have also been implicated to have anti-inflammatory functions in colitis [25]. In addition, they have demonstrated some effectiveness in the treatment of IBD patients [26]. We located a predicted IRF-7 binding site in the putative promoter region of the *CysLT₂R*, which suggests that the *CysLT₂R* promoter might be regulated by the IFN- α . This is interesting given that the anti-proliferative and anti-tumorigenic effects attributed to the IFN- α are consistent with the observed characteristics of the CysLT₂R function [17]. IFN- γ has previously been reported to increase the expression of CysLT₂R mRNA and protein in eosinophils [27]. In addition it enhances the cysLT-induced inflammatory response of primary endothelial cells [28].

Epidermal growth factor (EGF) signaling via the EGFR is a known inducer of cell proliferation and tumor cell invasion [29,30]. Examining the putative promoter region for the CysLT₂R, we located four conserved E-box elements (consensus sequence CANNTG). EGF signaling has been seen to induce transcriptional repression through E-boxes [31].

In this study, we found novel regulation factors for the *CysLT₂R*. The anti-tumorigenic cytokine IFN- α is able to increase the transcription of the *CysLT₂R* while EGF, a known inducer of cell proliferation and migration, suppresses the *CysLT₂R* expression. This is consistent with the proposed anti-tumorigenic role for CysLT₂R in colon cancer.

Materials and Methods

Chemicals

The rabbit polyclonal anti-human CysLT₂R antibody (diluted 1:1000) was purchased from Innovagen (Lund, Sweden). The ligand LTC₄ and Montelukast were from Cayman Chemicals Co. (Ann Arbor, MI). The mouse anti-actin (diluted 1:2000) and goat anti-IFN α / β R1 antibodies (diluted 1:100, immunohistochemistry) were purchased from Sigma Chemicals Co. (St. Louis). The IFN α R1 antibody (diluted 1:1000) was from Novus Biologicals (Littleton, CO). The EGFR (diluted 1:10, immunohistochemistry) was purchased from Zymed Laboratories Inc. (San Francisco, CA). EGFR (diluted 1:300, Western blot) while the pEGFR (diluted 1:1000) antibodies were from BD Transduction Laboratories (Erembodegem, Belgium). The total Snai 1 antibody (diluted 1:500) was from Proteintech Group Inc. (Chicago, IL) and the pSnai antibody (diluted 1:500) was from AbCam (Cambridge, UK). The secondary peroxidase linked goat anti-rabbit and anti-mouse antibodies (diluted 1:5000) were from Dako (Glostrup, Denmark). Methyl-³H-thymidine, the enhanced chemiluminescence (ECL) reagents and the Western blot detection reagents as

well as the hyperfilm were from Amersham International (Buckinghamshire, UK). TaqMan primers and master mix for real-time PCR were purchased from Applied Biosystems (Cambridge, UK). The RNeasy Plus Mini kit was from Qiagen GmbH (Hilden, Germany). Unless otherwise stated, all other reagents were of analytical grade and purchased from Sigma Chemicals Co. (St. Louis, MO) or from ICN (Temecula, CA).

Cell Culture

The non-transformed human intestinal epithelial cell line (Int 407) [32], which exhibits typical epithelial morphology and growth, was cultured as a monolayer for approximately five days in Eagle's basal medium supplemented with 15% newborn calf serum. The two colon cancer cell lines, Caco-2 (DSMZ No: ACC 169) and SW 480 (DSMZ No: ACC 313), were respectively grown in Dulbecco's modified Eagle medium and RPMI 1640 supplemented with 10% and 20% fetal bovine serum respectively. All media was supplemented with 2 mM L-glutamine, 55 IU/mL penicillin and 55 μ g/mL streptomycin. The cell lines were cultured at 37°C in a humidified atmosphere with 5% CO₂. The cells were regularly tested to ensure the absence of mycoplasma contamination.

Cell Lysates

Cells were washed, scraped with ice-cold 1 \times PBS, and centrifuged for 5 min at 1000 g. The cell pellets were lysed with lysis buffer [33] for 30 min on ice, homogenized 10 times with a 20G needle, and centrifuged for 5 min at 500 g.

Gel Electrophoresis and Immunoblotting

To ensure equal loading, all samples were evaluated and compensated for protein concentration using the Coomassie blue protein assay. Proteins were denatured by boiling in sample buffer for 5 min [34]. The samples were subjected to electrophoresis on 8% or 10% polyacrylamide gels in the presence of 10% SDS. The immunoblotting and developing were performed as described in Nielsen *et al.* [34].

Real-Time PCR Analysis

Cells were washed in PBS and immediately frozen at -80°C. Thereafter, they were scraped in lysis buffer provided in the kit and homogenized 10 times with a 20G needle. RNA was purified on RNeasy MinElute Spin Columns and dissolved in RNase free H₂O. cDNA synthesis was performed using RevertAid H Minus M-MuLV reverse transcriptase (Fermentas Life Sciences). The mRNA expression levels of CysLT₂R, CysLT₁R, mucin-2 and the endogenous housekeeping gene, hypoxanthine phosphoribosyltransferase 1 (HPRT-1), were quantified using real-time PCR analysis (TaqMan Chemistry). cDNA was mixed with 0.9 μ M TaqMan primers and master mix and amplified at 60°C in an Mx3005P thermocycler (Stratagene). The following primers were used: CysLT₂R (Hs00252658_s1), CysLT₁R (Hs00929113_m1), mucin-2 (Hs00159374_m1), and HPRT-1 (Hs99999909_m1). The samples were analyzed and normalized against HPRT-1 using the MxPro software (Stratagene).

Plasmid Constructs

Human *CysLT₂R* promoter fragments were subcloned into a pGL3-enhancer vector (Promega) containing a luciferase reporter gene. To produce construct I, one thousand base pairs upstream of the transcription start site of the *CysLT₂R* gene were amplified from genomic DNA extracted from the human Int 407 cell line by nested PCR. The following primers were used in the process:

forward 5'-ACATCAGGCAGCATTAAATGT-3' and reverse 5'-GGACATAAATTTTCTCTCCAT-3', followed. This was followed by a PCR that used the following primers; forward 5'-TTATGAGCTCGTTTCAAACATTAATG TAAC-3' and reverse 5'-TTCTAAGCTTGCTGGGTTAAAAAGAAAC-3'. All PCR products were gel purified using the QIAquick gel extraction kit (Qiagen). They were digested with restriction enzymes and ligated into the pGL3-enhancer reporter vector using the Quick ligation kit (New England BioLabs). The plasmids were transformed into SoloPack Gold super competent cells (Stratagene). To produce the clone with the deleted IRF-7 binding site (construct II), the site directed mutagenesis with the following primers were used: forward 5'-ATGGCTATTCTACATTCAAAAATTATGAAATGTAATGCAGCATGT-3' and reverse 5'-ACATGCTGCATTACATTTTCATAATTTTTGAATGTA-GAATAGCCAT-3'. The Quickchange XL kit (Stratagene) was used according to standard protocol. Three deletion constructs were produced by digesting construct I with restriction enzymes. Construct III was digested with *SacI* and *SpeI* to produce a construct from -1 to -412. Construct IV was digested with *HindIII* and *SpeI* to remove the downstream part of the promoter, thereby creating a construct between sites -1012 and -413 of the CysLT₂R promoter. Blunt end digestion was performed using T4 DNA polymerase (Promega) and the vector was ligated back together. The promoter construct V was digested with *SacI* and *SmiI* to give a construct from -1 to -187. All plasmids were extracted using Endofree plasmid maxi kit (Qiagen) and were sequenced accordingly.

Transient Transfections and Measurement of Luciferase Activity

Transient transfections of Int 407 cells were carried out using Lipofectamine LTX and Plus Reagent (Invitrogen) in serum free medium according to the manufacturer's instructions. The final DNA concentration used for transfections was 1 µg/ml for all plasmids except for the luciferase transfection control vector *Renilla* (0.2 µg/ml). The transfections were carried out for 4–6 h in 37°C, after which the medium was changed to 15% serum containing the medium. Forty-eight hours after transfection, the cells were stimulated with IFN-α (500–2000 U/ml) or EGF (100 ng/ml) in serum free medium for 24 h. The cells were lysed with passive lysis buffer (Promega) and stored in -80°C. Thawed lysates were centrifuged for 5 min at 1000 g and analyzed using the Dual Luciferase Reporter Assay System from Promega, following the manufacturer's instructions.

Electromobility Shift Assay (EMSA)

Nuclear extracts were prepared from Int 407 cell treated with IFN-α 1000 U/ml or EGF 100 ng/ml for 24 h using the Nuclear Extraction Kit (Chemicon International). The process was performed according to the manufacturers' instructions. In addition, 10 mM 1-Naphthyl phosphate monosodium salt monohydrate, a broad phosphatase inhibitor, (Sigma Aldrich) was added into both cytoplasmic and nuclear lysis buffer before use. Biotin 3' end-labeled single-stranded oligonucleotide corresponding to the IRF-7 binding region of *CysLT₂R* putative promoter (sense: 5'-AAT CAG GAA ATT TAA ATT TAT TAT-3' and antisense: 5'-ATA ATA AAT TTA AAT TTC CTG ATT-3') or E-box binding site (sense: 5'-TTC TTT CAG CAT TTG AGA AAT GTG-3' and antisense 5'-CAC ATT TCT CAA ATG CTG AAA GAA-3') were purchased from TAG Copenhagen A/S. DNA probes were then annealed in buffer containing 10 mM Tris, 1 mM EDTA, and 50 mM NaCl (pH 8.0) by incubating the oligonucleotides at 95°C for 5 min then gradually reducing the heat until the DNA reached

room temperature. Binding reactions for EMSA were prepared using the LightShift Chemiluminescent EMSA kit (Pierce Thermo Scientific). The binding buffer for IRF-7 contained 10 mM Tris-HCl (pH 7.5), 1 mM EDTA, 50 mM NaCl, 2 mM dithiothreitol, 5% glycerol, 0.5% NP-40, and 10 µg/ml BSA. To reduce nonspecific binding, 62.5 µg of poly(dI:dC) was added per ml. Each reaction contains 20 µg nuclear extract. After 20 min of incubation with the probe at room temperature, extracts were loaded on a 5% polyacrylamide gel. After 1 h at 100 V, the gel was transferred onto a positive charged Nylon Membrane, (Thermo scientific) and detected according to kit instruction. The binding buffer for E-box contained 20 mM HEPES, pH 7.6, 150 mM KCl, 3 mM MgCl₂, 10% glycerol, 0.2 mM ZnSO₄, 0.3 mg/ml BSA and 1 µg/20 µL of poly(dI:dC). The binding reaction was performed on ice for 30 min before being loaded onto the gel. To demonstrate the specificity of protein-DNA complex formation, a 1,000-fold molar excess of unlabeled oligonucleotides or IRF-7 (G-8) antibody (Santa Cruz) or SNAI 1 (E-18) antibody (Santa Cruz) was added to the binding reaction mixtures before the probe.

Alkaline Phosphatase Activity

The assay was performed as previously described [35]. Briefly, alkaline phosphatase activity was measured using disodium p-nitrophenyl phosphate as substrate. Caco-2 cells were seeded in Petri dishes and incubated for 24 h at 37°C. Five hundred to 2000 U/ml of IFN-α and/or 40 nM of LTC₄ was added to the cells and subsequently incubated for 72 h at 37°C. New LTC₄ was added every 24 h. Sodium butyrate (2 mM) was used as a positive control (data not shown). The alkaline phosphatase activity was estimated by measuring the level of p-nitrophenol at 405 nm.

Thymidine Incorporation Assay

Caco-2 cells were grown in flat-bottomed 96 well plates for five days. The medium was changed to serum-free 2 h prior to stimulation. Cells were stimulated with LTC₄ (40 nM), IFN-α (1000 U/ml) or EGF (100 ng/ml) for 48 h. DNA synthesis was assessed by adding 0.5 µCi of [³H] thymidine during the final 18 h of stimulation. The wells were washed once with PBS and incubated with 0.05% trypsin-EDTA solution/well for 5 min at 37°C. Cells were harvested and collected on a filter paper in a Perkin Elmer harvester. The filter paper was dried and [³H] thymidine incorporation was measured in a 1450 Microbeta Trilux liquid scintillation counter (Wallac).

Cell Migration Assay

Cell migration was analyzed in a modified Boyden chamber, which consisted of two chambers separated by a polycarbonate PVDF membrane (pore size of 8 µm) that was covered with a collagen I gel (3 mg/ml). Int 407 cells were grown for 18 h in the presence or absence of LTC₄ (40 nM) and/or EGF (100 ng/ml) in medium containing 1.5% serum. Fifteen percent serum was used as a positive control. Cells were added to the upper well and allowed to migrate into the chamber for 18 h at 37°C. The migrated cells were fixed in 4% paraformaldehyde and the membranes were stained with a 1% crystal violet/10% in a methanol solution. The membranes were washed in PBS and the remaining dye was removed with 10% SDS. The absorbance was measured at 590 nm.

Patient Samples

Archival formalin fixed and paraffin embedded colon cancer and control colon specimens of colorectal cancer patients

collected in 1990 were obtained from the biobanks of Malmö University Hospital. Tissues from 78 patients with varying grades and stages of the disease were included. Grading of the tumors was performed using Dukes' classification [36]. The matched control samples of normal colon tissue in this investigation were taken from the borders of the surgical specimens.

Ethics Statement

This study was performed after ethical permission from the Regional Ethical Review Board, Lund University # 367/2005. Archival tissue specimens from 78 colon cancer patients that were operated between 1990 and 1991 were used in the present study. Since the samples were old and taken from different parts of the region, it was not possible to obtain written consent from each patient. Detailed information describing the study and tissue microarray (TMA) construction was published in 2006 in a daily newspaper and patients were offered to contact us by mail or by phone if they had any objections. None of the 78 patients objected. This procedure was performed following strict guidelines from the Regional Ethical Review Board in Lund who approved the procedure.

Tissue Arrays and Immunohistochemistry

For histological assessment, the archival paraffin-embedded colorectal cancer and normal mucosa specimens were used and prepared as previously described [16]. The array was stained with anti-IFN α / β R1, EGFR and CysLT₂R antibodies. Secondary peroxidase antibodies used were from Dako. After immunostaining, all slides were counterstained with Mayer's hematoxylin.

Statistical Analyses

Statistical significance was determined as $P < 0.05$ by two-tailed Student's *t* test or one-way ANOVA. Pearson's correlation test was used when comparing different sets of immunohistochemistry staining. SPSS software 16.0 (SPSS, Inc.) was used for the patient material analysis.

Results

An IRF-7 Binding Site and Four E-boxes Have Been Found to be Present in the CysLT₂R Promoter Region

To increase the understanding of the role of cysteinyl leukotrienes in inflammation-induced colorectal carcinogenesis, we examined possible ways by which the expression of CysLT₂R can be regulated, with one of the receptors generating the effects of leukotrienes. The promoter region of CysLT₂R contains several interesting binding sites for known transcription factors and transcriptional repressors. Previous reports from our laboratory have shown that CysLT₂R is down regulated in colon cancer [17,37] and that it is involved in colon cancer cell differentiation [17] as well as in decreased cell migration in breast cancer cells [18]. Therefore, it was of particular interest that a putative binding element for IRF-7 and four E-box elements were present in the promoter region of the CysLT₂R. Five constructs of the CysLT₂R promoter region were created and ligated into a pGL3-enhancer reporter vector to evaluate the importance of IRF-7 and the E-boxes for activation/transcription of CysLT₂R (Fig. 1A). IFN- α can be used to activate the transcription factor IRF-7. However, the presence of the IFN- α receptor IFN- α R1 is needed to do this. The presence of the IFN- α R1 is confirmed in the intestinal cell lines intended for this study (Fig. 1B). Likewise, the expression of the EGFR (Fig. 1C) and the CysLT₂R (Fig. 1D) was verified.

CysLT₂R Promoter Activity is Activated by the IFN- α via an IRF-7 Binding Site and It is Repressed by the EGF Through the E-boxes Present in the Putative Promoter Region

We have seen that CysLT₂R expressions were altered in patient's tumor material, which might be due to a changed "microenvironment around the tumor". Therefore, we decided to search for a Th1 regulatory cytokine motif in the promoter region of the CysLT₂R. The presence of a putative IRF-7 binding site in the CysLT₂R promoter region indicated that the Th1 pro-inflammatory cytokine IFN- α ought to induce CysLT₂R promoter activity and transcription of the CysLT₂R encoding gene. A dilution series with IFN- α showed that 1000 U/ml IFN- α generated an optimal activation of CysLT₂R (Fig. 2A). To elucidate whether IFN- α induces the CysLT₂R through IRF-7 binding to its putative binding site in the promoter region, the promoter activity for deletion mutant constructs I-V were tested (Fig. 2B). IFN- α induced a significant two-fold activation of the CysLT₂R in the non-transformed cell line Int 407 (construct I). This activation was partly reduced in the Δ IRF-7 mutant (construct II). IFN- α was unable to induce the CysLT₂R promoter activity in constructs IV and V, which both lacked full-length IRF-7 response elements. However, a significant reduction in activation compared to wild-type construct I was also observed for construct III, which contains an intact IRF-7 response element but lacks the part upstream of bp -412. Taken together, this indicates that the IFN- α -induced activation of the CysLT₂R requires the IRF-7 binding site for complete activation, but also needs additional unidentified binding elements located up-stream of the IRF-7 site for full activation.

Further examination of the CysLT₂R promoter sequence revealed the presence of four conserved E-box elements. EGF signaling can induce repressor elements that bind to mentioned sequences. Four of the CysLT₂R luciferase reporter constructs were used to investigate the effects of EGF on the CysLT₂R. We found that EGF suppressed CysLT₂R luciferase reporter activity (Fig. 2C). The importance of the E-boxes was investigated by testing the ability of the EGF to suppress CysLT₂R promoter activity in three deletion constructs, (construct III, with only E-box 4 present, construct IV containing three E-boxes, and construct V without any E-boxes). The EGF-induced reduction of CysLT₂R promoter activity significantly declined with a decreasing number of E-boxes present in the putative promoter region. There was a statistically significant difference between the EGF-induced reductions of construct IV and construct V. However, the reduction is probably mediated both through an E-box-dependent as well as an E-box-independent pathway in the intestinal cells.

Analysis of IRF-7 and E-box DNA binding activities on the CysLT₂R putative promoter region in Int 407 cells were performed to compliment the luciferase experiments (Fig. 2D). The EMSA results showed that IRF-7 containing complexes were detected in both untreated and IFN- α treated cells. We found an increased association upon the stimulation of the complexes. The addition of cold probe and anti-IRF-7 antibody competed with IRF-7 in binding the IRF-7 binding site on the promoter region. The addition of cold probe could completely inhibit probe-protein complex formation. Likewise, Snail-containing complexes were detected in both untreated and EGF treated cells. We found increased association upon stimulation of the complex. The addition of cold probe could completely inhibit the formation of probe-protein complex. Moreover, additional anti-Snail antibody reduced the probe-protein complex formation.

Next, we wanted to see that the regulatory effects for IFN- α and EGF observed in connection with CysLT₂R luciferase reporter

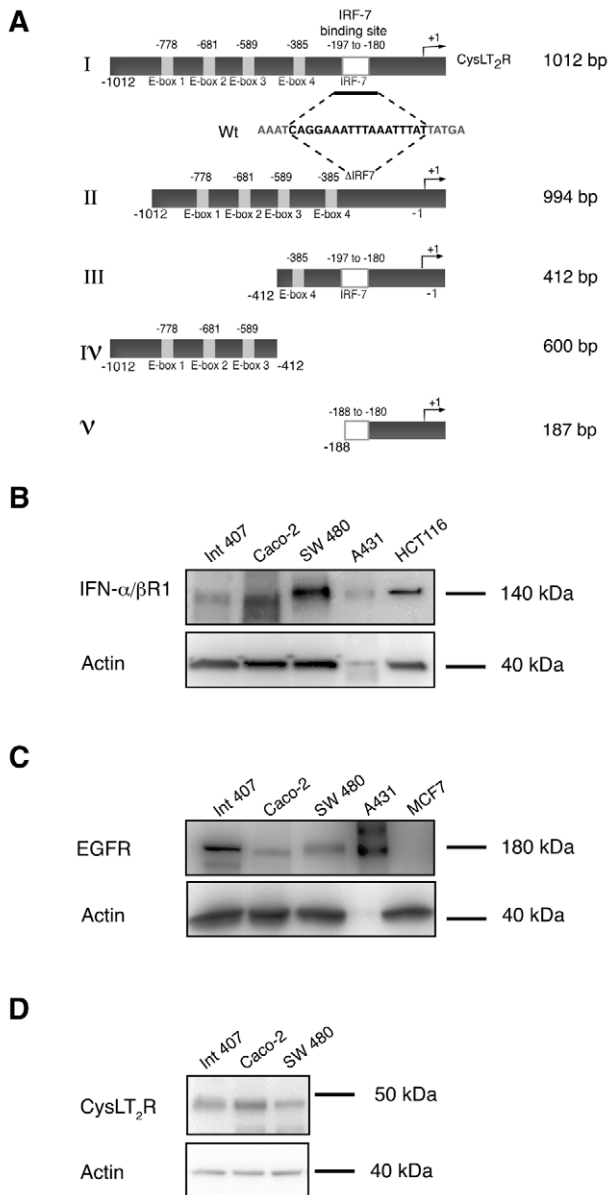


Figure 1. There is an IRF-7 binding site and four E-boxes present in the *CysLT₂R* putative promoter region. (A) Schematic visualization of the *CysLT₂R* promoter. Construct I contains the wildtype promoter region (1012 bp) and constructs II–V are various deletion constructs. Representative Western blots from three different experiments with the intestinal epithelial cell line Int 407 and the colon cancer cell lines Caco-2 and SW 480 were analyzed as follows. (B) The blot shows the levels of IFN α / β R1, and A431 cells were used as a negative control while HCT116 cells were used as a positive control. (C) The blot shows the levels of EGFR protein expression, A431 cells were used as a positive control and MCF7 cells were used as a negative control, and (D) the blot shows the levels of CysLT₂R protein expression. doi:10.1371/journal.pone.0029060.g001

activity also affected CysLT₂R mRNA and protein expression. Consistent with the results from the gene activation assay, the IFN- α significantly up-regulated both the CysLT₂R mRNA (peaking at 12 h) and the protein (maximum increase at 24 h) (Fig. 2E). The EGF induced a significant suppression of both the CysLT₂R mRNA and the protein expression (Fig. 2F).

EGFR and Snail Activation is Involved in EGF Repressing *CysLT₂R*

Stimulation with EGF leads to the activation of the EGFR (Fig. 3A) and to the activation of Snail (Fig. 3B), a transcriptional repressor known to bind to E-box elements. It is likely that the EGF-induced suppression of the CysLT₂R is generated by Snail that binds to the E-box elements present in the promoter region of the *CysLT₂R*. Interestingly, an induction of CysLT₁R mRNA is observed after EGF treatment of intestinal cells at the same time as CysLT₂R mRNA is suppressed (Fig. 3C), indicating, as earlier suggested, opposing effects of the CysLTRs [37].

IFN- α Can Induce Differentiation of Caco-2 Cells

Sodium butyrate is a known inducer of differentiation in Caco-2 cells [38], which is frequently used as a model system for differentiation in cell culture [39]. The activation of different luminal brush border proteins, such as alkaline phosphatase, can be used as a measurement for epithelial cell differentiation. Previously, we have shown that the CysLT₂R ligand LTC₄ is able to induce differentiation in Caco-2 cells [17]. IFN- α induced a small but significant increase in the activation of alkaline phosphatase, indicating increased differentiation of Caco-2 cells. IFN- α had, however, no additive effect to the alkaline phosphatase activity induced by LTC₄ (Fig. 4A). To confirm the effect of alkaline phosphatase activity, an additional differentiation assay was used. Mucin-2 is a marker for intestinal cell differentiation [40]. Both LTC₄ and IFN- α could significantly induce mucin-2 mRNA in Caco-2 cells (Fig. 4B). The CysLT₂R antagonist AP-100984 could significantly block both LTC₄ induction of mucin-2, which was not seen with the specific CysLT₁R antagonist Montelukast. This strengthens the hypothesis that CysLT₂R might have a protective role in colon cancer and in normal intestinal mucosa. We have previously shown that LTC₄ does not induce proliferation in Caco-2 cells [17]. Here, we show that IFN- α does not induce a proliferative response either. EGF, on the other hand, is a known mitogen inducer [41] and was used here as a positive control (Fig. 4C). This corresponds well to the previous reported roles of the CysLTRs.

We next investigated the effect of CysLT₂R signaling on Int 407 cell migration. We found that LTC₄-induced activation of CysLT₂R reduced Int 407 cell migration (Fig. 4D). Furthermore, we also found that EGF-induced Int 407 cell migration could be suppressed by CysLT₂R activation (Fig. 4D).

EGFR Inversely Correlates with CysLT₂R in Colorectal Cancer

Next, we wanted to clarify if the levels of IFN α / β R1 and EGFR correlated with the CysLT₂R pattern in a colon cancer patient array. The TMA contains material from 78 colon cancer patients and has previously been thoroughly described [16]. Representative stainings from the array for IFN α / β R1 and EGFR are shown in Fig. 5A. We have previously shown that CysLT₂R is down-regulated in colon tumor tissue in patients from this array and that more aggressive tumors expressed less of the CysLT₂R [17]. We observed that patients with more aggressive tumors generally had less expression of IFN α / β R1 while patients with less aggressive tumors generally exhibited a higher expression of IFN α / β R1. A more distinct trend was visualized when the patients were divided into subgroups with high (++, +++) or low (+/-, +) IFN α / β R1 staining. Duke's A patients had a higher percentage of increased IFN α / β R1 staining than Duke's B and Duke's C patients (Fig. 5B). The expression of the EGFR was generally up-regulated in colon cancer patients in this study, which is coherent with earlier published studies [42] (Fig. 5C). Representative pictures from a

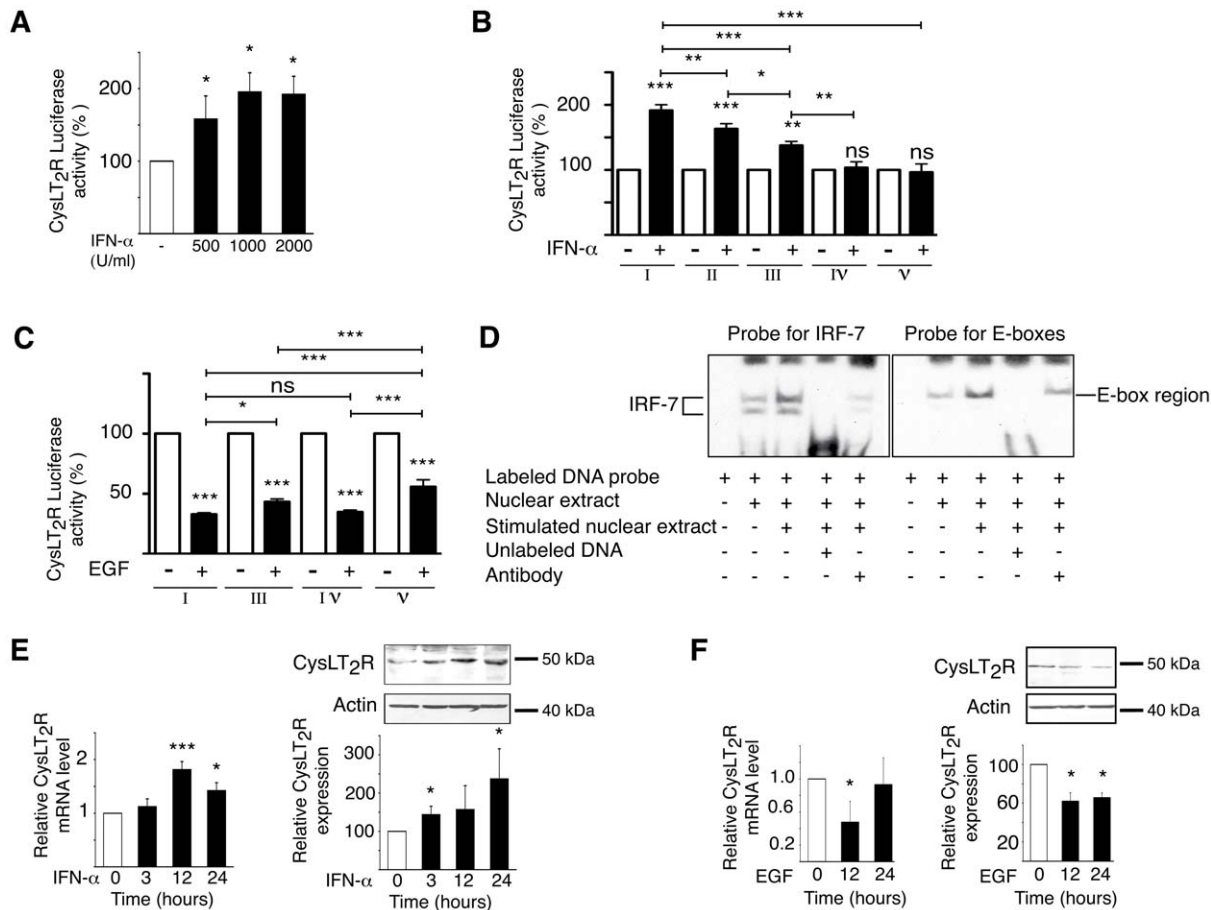


Figure 2. IFN- α induces *CysLT₂R* luciferase reporter activity whereas EGF suppresses it. (A) *CysLT₂R* luciferase activity following transient transfection with pGL-3-*CysLT₂R* construct in Int 407 cells, with or without treatment with 500–2000 U/ml IFN- α for 24 h. **(B)** Int 407 cells transfected with wildtype *CysLT₂R* promoter or *CysLT₂R* promoter deletion constructs. Cells were grown in the presence of IFN- α (1000 U/ml) or in the presence of EGF (100 ng/ml) for 24 h **(C)**. In brief, followed by stimulation with IFN- α or EGF for 24 h and measurement of luciferase activity (relative luciferase units). Results shown are the mean \pm SD of at least three independent experiments performed in triplicate. **(D)** Analysis of IRF-7 and E-box DNA binding activities by EMSA on *CysLT₂R* promoter region in Int 407 cells. Modulation of IRF-7 DNA binding in cells stimulated with IFN- α (1000 U/ml). For competition assays, a 1000-fold molar excess of unlabeled oligonucleotides (Lane 4) or 10 μ g anti-IRF-7 antibody (Lane 5) was added before addition of probe to the binding reactions, (**left panel**). Effect on E-box DNA binding in cells stimulated with 100 ng/ml EGF for 24 h. A 1000-fold molar excess of unlabeled oligonucleotides (Lane 4), or 10 μ g anti-Snail antibody was added before addition of probe to the binding reactions (**right panel, lane 5**). **(E)** Real-time PCR quantification of mRNA expression of *CysLT₂R* and immunoblot analysis of *CysLT₂R* protein following treatment with or without 1000 U/ml IFN- α . **(F)** Real-time PCR quantification of mRNA expression of *CysLT₂R* and immunoblot analysis of *CysLT₂R* protein with or without treatment with EGF (100 ng/ml). The results are shown as means \pm SD of at between three to ten separate experiments; *, $P < 0.05$; **, $P < 0.01$; ***, $P < 0.001$ for one-way ANOVA or two tailed Student's t-test. doi:10.1371/journal.pone.0029060.g002

Duke's C colon cancer patient are shown in Fig. 5D. They exhibit high expression of *CysLT₂R* and IFN α / β R1 in control tissue and decreased expression in the tumor. Conversely, EGFR expression was enhanced in the tumor material. A statistical significant negative correlation could be observed in the expression levels between *CysLT₂R* and EGFR in this tissue array. Although IFN α / β R1 and *CysLT₂R* had similar expression patterns in relation to cancer staging, no significant correlation between the expression levels of these two receptors could be found (Table 1).

Discussion

Several different ways of regulating *CysLT₂R* have previously been reported. For example, LTD₄ can up-regulate the mRNA expression of *CysLT₂R* in monocytes [43] and epithelial cells [44] and the cytokines IL-4, IL-8 and IFN- γ [28,45,46] can up-regulate the mRNA expression of *CysLT₂R* in several different cell types.

Since a binding site for IRF-7 was present in the putative promoter region of the *CysLT₂R*, we hypothesized that the IFN- α would be able to induce *CysLT₂R* expression via transcription factor IRF-7. The ability of the IFN- α to induce anti-proliferative and anti-tumor progression responses [24,47] made it an interesting candidate to study in relation to *CysLT₂R*. IFNs have been reported to mediate their anti-tumor effects by altering immune responses, such as the suppression of cytokine IL-1 [48] and inducing TRAIL [49], and by inducing anti-angiogenic responses by inhibiting VEGF [50]. We show that the IFN- α induced a two-fold activation of the wild-type *CysLT₂R* promoter and increased expression in the *CysLT₂R* mRNA and protein. How the IFN- α mediates its effects, however, is not completely elucidated. The IRF-7 binding site is important and required for the optimal induction of the *CysLT₂R* promoter by the IFN- α , but it is not the only crucial activation site. Additional transcription factors are probably engaged as well. We discovered that the promoter region of the *CysLT₂R* contains four conserved E-

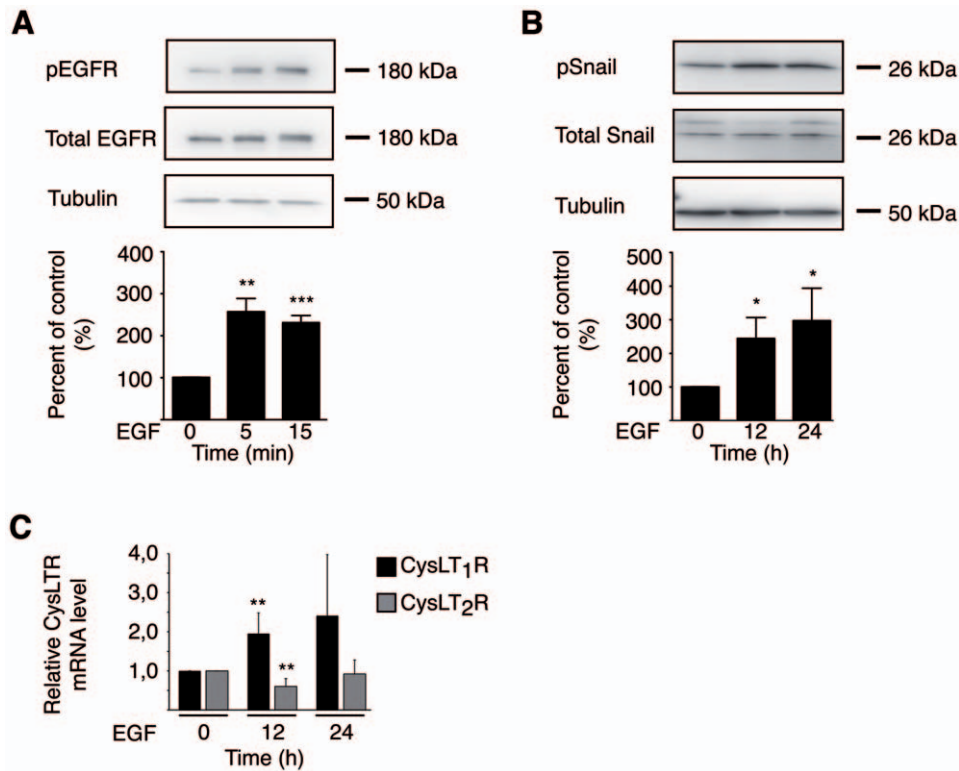


Figure 3. EGF induced activation of EGFR and snail in Int 407 cells. (A) Western blot of Int 407 cells showing phosphorylation of EGFR after EGF (100 ng/ml) treatment for 5 or 15 min. (B) Western blot of Int 407 cells showing phosphorylation of snail after EGF treatment (100 ng/ml) for 12–24 h. (C) Real-time PCR quantification of mRNA expression of CysLT₁R and CysLT₂R with and without EGF (100 ng/ml) treatment. The results are shown as means \pm SD of at least three separate experiments; *, $P < 0.05$; **, $P < 0.01$ and ***, $P < 0.001$. doi:10.1371/journal.pone.0029060.g003

box elements. Interestingly, the mitogenic EGF suppressed both CysLT₂R mRNA and protein expression as well as the promoter activity, strengthening the hypothesis that the CysLT₂R is a potential tumor suppressor. To validate the importance of the E-boxes, *CysLT₂R* promoter deletion constructs were used. EGF stimulation significantly decreased the *CysLT₂R* promoter activity in all promoter constructs, but to a significantly reduced capacity in the deletion constructs. These results indicate that the E-box elements are important but are not the only mechanisms that allow the EGF to suppress the transcription of the *CysLT₂R*. We cannot rule out that other transcription factors can also be activated by the EGF to reduce the *CysLT₂R* luciferase reporter activity of construct V that lack the E-boxes. Mann *et al.* report that EGF, through the EGFR, can repress the proposed tumor suppressor prostaglandin dehydrogenase (PGDH), allowing PGE₂ to accumulate and activate the pathway repeatedly in a positive feedback loop. They show that EGFR signaling induces Snail, which binds to the conserved E-box elements in the *PGDH* promoter and represses transcription [31]. It is likely that the repression of the *CysLT₂R* in the presence of EGF is a result of EGF signaling via the EGFR, thereby activating the Snail, which then functions as a transcriptional repressor when bound to the E-boxes present in the *CysLT₂R* promoter region. Earlier, we have shown that LTC₄ is able to induce the differentiation of Caco-2 cells [17]. In this study, we show that IFN- α is also able to induce differentiation in colon cancer cells. This was demonstrated by the induction of mucin-2 after IFN- α stimulation. Mucins are highly glycosylated proteins that build up the mucus layer protecting the underlying epithelial cells in the intestine. The colon epithelium mainly secretes mucin-2 [51], which is known to play a protective role against colorectal diseases, such as

colon cancer [52] and colitis [53]. Mucin-2-deficient mice frequently develop adenomas, which progress into invasive adenocarcinomas, demonstrating that mucin-2 is involved in colon cancer suppression [52]. Interestingly, we demonstrate that both LTC₄ and IFN- α significantly induced the mRNA expression of mucin-2. Taken together, this implicates that both LTC₄ and IFN- α are involved in the stimulation of mucus synthesis and are important in protecting against mucosal damage in the colon. We have previously shown that endogenous signaling by overexpressed CysLT₂R is enough to suppress cell migration in breast cancer cells [18]. Here, we show that LTC₄ signaling mediates a suppression of cell migration and reduces the cell migration induced by EGF signaling. The ability of CysLT₂R signaling to suppress cell migration is probably one of the reasons why high CysLT₂R expression is connected to a better prognosis for colorectal cancer patients. It is possible that the balance between positive and negative gene regulators, such as repressors and transcription factors and their co-factors, are disrupted in the tumor microenvironment. This could explain the manner by which the down-regulation of CysLT₂R plays a role in colon cancer progression.

We observed a decrease of IFN α / β 1 in tumors in colon cancer patients. Considering the protective role that IFNs play in the innate immune system (i.e. participating in the cell defense against infections and tumor cells), we speculate that tumor cells have an impaired innate immune response. There are epidemiological associations between pathogen invasion leading to chronic inflammation and malignant transformations [2]. For example, virus infections have been connected to increased incidences of cancer. Infection with hepatitis B or C viruses can result in chronic hepatitis and liver cirrhosis, which are believed to be a major cause

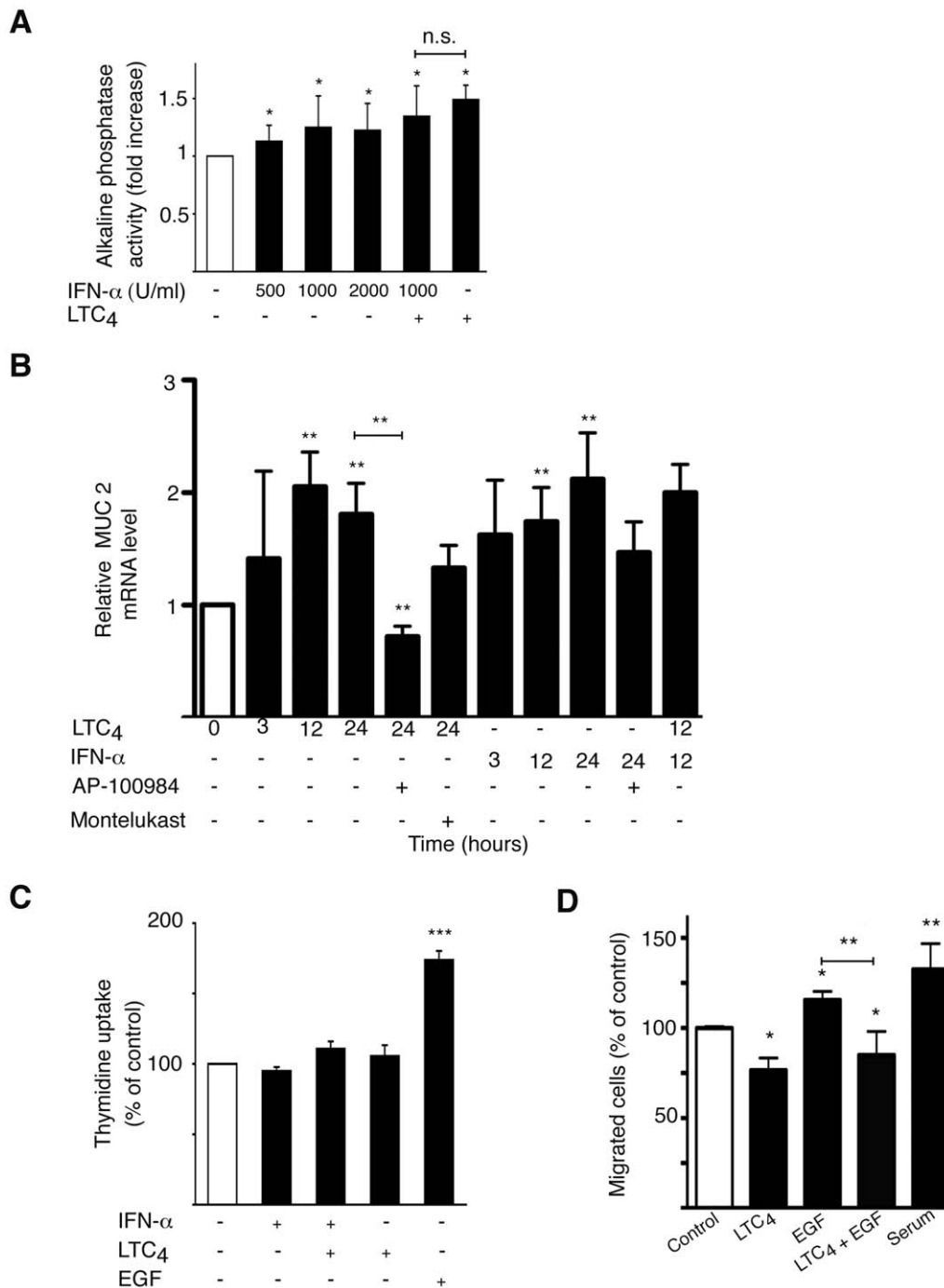


Figure 4. CysLT₂R signaling mediates anti-tumorigenic effects. (A) An alkaline phosphatase activity assay was used to determine the differentiation of Caco-2 cells. Cells were treated with IFN- α (500–2000 U/ml) and/or LTC₄ (40 nM) for 72 h. The alkaline phosphatase activity was determined by measuring the absorbance at 405 nm due to formation of *p*-nitrophenol. (B) QPCR quantification of mRNA expression of MUC2 with or without treatment with LTC₄ (40 nM), IFN- α (1000 U/ml), pretreatment for 30 min with CysLT₂R inhibitor AP-100984 (1 μ M) or CysLT₁R inhibitor Montelukast (1 μ M), in Caco-2 cells. (C) Caco-2 cells were incubated with LTC₄ (40 nM) and/or IFN- α (1000 U/ml) for 48 h in medium containing 1.5% serum. To determine proliferation by thymidine uptake, [methyl-³H] thymidine (0.5 μ Ci/well) was added to the wells during stimulation. (D) Cell migration was analyzed with Int 407 cells grown in the presence or absence of EGF (100 ng/ml) and/or LTC₄ (40 nM). The cells were allowed to invade a collagen gel on top of a Boyden chamber for 18 hrs. The results are shown as means \pm SD of at least three different experiments; *, $P < 0.05$; **, $P < 0.01$; ***, $P < 0.001$.
doi:10.1371/journal.pone.0029060.g004

of hepatocellular carcinoma [2]. In addition, the IFN- α can achieve anti-tumorigenic effects by affecting tumor cell differentiation [47]. The observation that IFN α / β R1 had lower expression in more aggressive tumors agrees with an anti-

tumorigenic role for IFN- α . Furthermore, the expression of IFN α / β R1 was reduced in tumor tissue compared to normal tissue from the surgical borders of the tumor in the patients, contributing to the notion of altered IFN signaling in tumor cells.

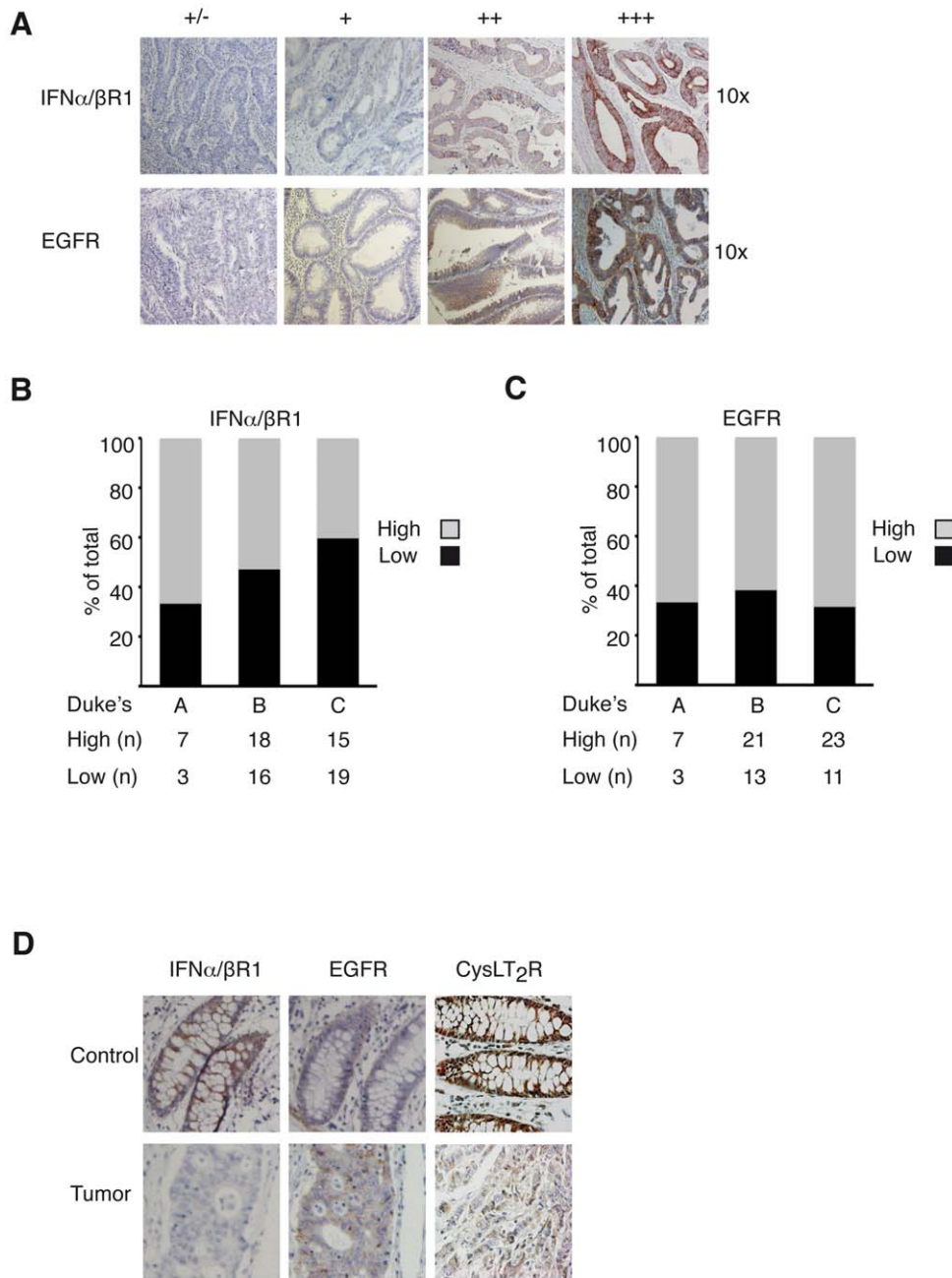


Figure 5. Representative IFN α / β R1 and EGFR staining in normal human colon tissue and colorectal adenocarcinomas. (A) Top row, shows the degree of IFN α / β R1 staining of carcinomas (+/- to +++, 10 \times objective). **(B)** Distribution of high (++, +++) and low (+/-, +) IFN α / β R1 staining intensities of tumors in Duke's A, B and C, and **(C)** of EGFR. Samples are assessed according to total IFN α / β R1 and EGFR staining. Statistics are based on tumors from 78 patients that were included in the array. **(D)** Representative pairs of control and tumor immunostaining from a Duke's C patient stained with IFN α / β R1, EGFR and CysLT₂R. doi:10.1371/journal.pone.0029060.g005

The same clinical material displayed overexpression of EGFR in tumor tissue. The expression pattern for CysLT₂R [17] is similar to the expression of anti-tumorigenic IFN α / β R1 while the expression of CysLT₁R is increased in colon cancer [16] similar to the expression of EGFR. Both CysLT₁R and EGFR exhibit pro-tumorigenic effects by driving the processes of cell migration and proliferation [29,30,33,54]. The nuclear localization of EGFR has been linked to more aggressive tumor types [29] and increased nuclear localization of CysLT₁R has also been observed in colon cancer cells [34]. We show that EGF signaling induces CysLT₁R

mRNA while suppressing CysLT₂R. Interestingly, EGFR and CysLT₂R display a significant inverse correlation in their expression pattern among the colon cancer patients in the array. In conclusion, we have located one response element for IRF-7 and four E-boxes in the promoter region of *CysLT₂R*. We demonstrate that the anti-tumorigenic IFN- α is able to induce *CysLT₂R* promoter activity and expression while EGF, a known inducer of mitogenic effects, is able to suppress it. These data support the hypothesis that CysLT₂R might have a protective role in colon cancer.

Table 1. CysLT₂R immunoreactivity vs. IFN α / β R1 and EGFR.

Relative Staining	Frequency (% of total)	CysLT ₂ R				n	Spearman's rank	p
		+/-	+	++	+++		Correlation	
Frequency		11	28	31	7	77		
IFNα/βR1								
+/-	2.8	0	1	1	0	2	0.062	0.608
+	40.8	7	7	13	2	29		
++	35.2	2	11	10	2	25		
+++	21.1	1	8	5	1	15		
EGFR								
+/-	1.4	0	1	0	0	1	-0.392	0.001
+	36.6	0	9	14	3	26		
++	36.6	3	12	9	2	26		
+++	25.4	7	5	6	0	18		

doi:10.1371/journal.pone.0029060.t001

Author Contributions

Conceived and designed the experiments: CM RE ML YC AS. Performed the experiments: CM AMB ML JL RE. Analyzed the data: CM AMB ML

JL RE AS. Contributed reagents/materials/analysis tools: AS CM AMB. Wrote the paper: CM ML YC AS.

References

- Coussens LM, Werb Z (2002) Inflammation and cancer. *Nature* 420: 860–867.
- Karin M, Lawrence T, Nizet V (2006) Innate immunity gone awry: linking microbial infections to chronic inflammation and cancer. *Cell* 124: 823–835.
- Balkwill F, Mantovani A (2001) Inflammation and cancer: back to Virchow? *Lancet* 357: 539–545.
- Negus RP, Stamp GW, Hadley J, Balkwill FR (1997) Quantitative assessment of the leukocyte infiltrate in ovarian cancer and its relationship to the expression of C-C chemokines. *Am J Pathol* 150: 1723–1734.
- Ekbom A, Helmick C, Zack M, Adami HO (1990) Ulcerative colitis and colorectal cancer. A population-based study. *N Engl J Med* 323: 1228–1233.
- Stenson WF (1990) Role of eicosanoids as mediators of inflammation in inflammatory bowel disease. *Scand J Gastroenterol Suppl* 172: 13–18.
- Samuelsson B (1983) Leukotrienes: mediators of immediate hypersensitivity reactions and inflammation. *Science* 220: 568–575.
- Kanaoka Y, Boyce JA (2004) Cysteinyl leukotrienes and their receptors: cellular distribution and function in immune and inflammatory responses. *J Immunol* 173: 1503–1510.
- Back M, Hansson GK (2006) Leukotriene receptors in atherosclerosis. *Ann Med* 38: 493–502.
- Lynch KR, O'Neill GP, Liu Q, Im DS, Sawyer N, et al. (1999) Characterization of the human cysteinyl leukotriene CysLT₁ receptor. *Nature* 399: 789–793.
- Heise CE, O'Dowd BF, Figueroa DJ, Sawyer N, Nguyen T, et al. (2000) Characterization of the human cysteinyl leukotriene 2 receptor. *J Biol Chem* 275: 30531–30536.
- Ciana P, Fumagalli M, Trincavelli ML, Verderio C, Rosa P, et al. (2006) The orphan receptor GPR17 identified as a new dual uracil nucleotides/cysteinyl-leukotrienes receptor. *Embo J* 25: 4615–4627.
- Sjöström M, Johansson AS, Schroder O, Qiu H, Palmblad J, et al. (2003) Dominant expression of the CysLT₂ receptor accounts for calcium signaling by cysteinyl leukotrienes in human umbilical vein endothelial cells. *Arterioscler Thromb Vasc Biol* 23: e37–41.
- Lotzer K, Spanbroek R, Hildner M, Urbach A, Heller R, et al. (2003) Differential leukotriene receptor expression and calcium responses in endothelial cells and macrophages indicate 5-lipoxygenase-dependent circuits of inflammation and atherogenesis. *Arterioscler Thromb Vasc Biol* 23: e32–36.
- Jiang Y, Borrelli LA, Kanaoka Y, Bacskai BJ, Boyce JA (2007) CysLT₂ receptors interact with CysLT₁ receptors and down-modulate cysteinyl leukotriene dependent mitogenic responses of mast cells. *Blood* 110: 3263–3270.
- Öhd JF, Nielsen CK, Campbell J, Landberg G, Löfberg H, et al. (2003) Expression of the leukotriene D₄ receptor CysLT₁, COX-2, and other cell survival factors in colorectal adenocarcinomas. *Gastroenterology* 124: 57–70.
- Magnusson C, Ehrnstrom R, Olsen J, Sjölander A (2007) An increased expression of cysteinyl leukotriene 2 receptor in colorectal adenocarcinomas correlates with high differentiation. *Cancer Res* 67: 9190–9198.
- Magnusson C, Liu J, Ehrnström R, Manjer J, Jirstrom K, et al. Cysteinyl leukotriene receptor expression pattern affects migration of breast cancer cells and survival of breast cancer patients. *Int J Cancer*.
- Hui Y, Cheng Y, Smalera I, Jian W, Goldhahn L, et al. (2004) Directed vascular expression of human cysteinyl leukotriene 2 receptor modulates endothelial permeability and systemic blood pressure. *Circulation* 110: 3360–3366.
- Pestka S, Krause CD, Walter MR (2004) Interferons, interferon-like cytokines, and their receptors. *Immunol Rev* 202: 8–32.
- Kawai T, Akira S (2006) Innate immune recognition of viral infection. *Nat Immunol* 7: 131–137.
- Takaoka A, Yanai H (2006) Interferon signalling network in innate defence. *Cell Microbiol* 8: 907–922.
- Solis M, Goubau D, Romieu-Mourez R, Genin P, Civas A, et al. (2006) Distinct functions of IRF-3 and IRF-7 in IFN- α gene regulation and control of anti-tumor activity in primary macrophages. *Biochem Pharmacol* 72: 1469–1476.
- Belardelli F, Ferrantini M, Proietti E, Kirkwood JM (2002) Interferon- α in tumor immunity and immunotherapy. *Cytokine Growth Factor Rev* 13: 119–134.
- Katakura K, Lee J, Rachmilewitz D, Li G, Eckmann L, et al. (2005) Toll-like receptor 9-induced type I IFN protects mice from experimental colitis. *J Clin Invest* 115: 695–702.
- Sandborn WJ, Targan SR (2002) Biologic therapy of inflammatory bowel disease. *Gastroenterology* 122: 1592–1608.
- Fujii M, Tanaka H, Abe S (2005) Interferon- γ up-regulates expression of cysteinyl leukotriene type 2 receptors on eosinophils in asthmatic patients. *Chest* 128: 3148–3155.
- Wozczek G, Chen LY, Nagineni S, Alsaaty S, Harry A, et al. (2007) IFN- γ induces cysteinyl leukotriene receptor 2 expression and enhances the responsiveness of human endothelial cells to cysteinyl leukotrienes. *J Immunol* 178: 5262–5270.
- Lo HW, Hung MC (2006) Nuclear EGFR signalling network in cancers: linking EGFR pathway to cell cycle progression, nitric oxide pathway and patient survival. *Br J Cancer* 94: 184–188.
- Lu Z, Ghosh S, Wang Z, Hunter T (2003) Downregulation of caveolin-1 function by EGF leads to the loss of E-cadherin, increased transcriptional activity of beta-catenin, and enhanced tumor cell invasion. *Cancer Cell* 4: 499–515.
- Mann JR, Backlund MG, Buchanan FG, Daikoku T, Holla VR, et al. (2006) Repression of prostaglandin dehydrogenase by epidermal growth factor and snail increases prostaglandin E₂ and promotes cancer progression. *Cancer Res* 66: 6649–6656.
- Henle G, Deinhardt F (1957) The establishment of strains of human cells in tissue culture. *Journal of Immunology* 79: 54–59.
- Paruchuri S, Sjölander A (2003) Leukotriene D₄ mediates survival and proliferation via separate but parallel pathways in the human intestinal Epithelial cell line Int 407. *J Biol Chem* 278: 45577–45585.

34. Nielsen CK, Campbell JI, Öhd JF, Morgelin M, Riesbeck K, et al. (2005) A novel localization of the G-protein-coupled CysLT1 receptor in the nucleus of colorectal adenocarcinoma cells. *Cancer Res* 65: 732–742.
35. Hossain Z, Konishi M, Hosokawa M, Takahashi K (2006) Effect of polyunsaturated fatty acid-enriched phosphatidylcholine and phosphatidylserine on butyrate-induced growth inhibition, differentiation and apoptosis in Caco-2 cells. *Cell Biochem Funct* 24: 159–165.
36. Dukes CE (1932) The classification of cancer of the rectum. *J Pathol Bacteriol* 35: 323–332.
37. Magnusson C, Mezhybovska M, Lorinc E, Fernebro E, Nilbert M, et al. Low expression of CysLT1R and high expression of CysLT2R mediate good prognosis in colorectal cancer. *Eur J Cancer* 46: 826–835.
38. Wang Q, Wang X, Hernandez A, Kim S, Evers BM (2001) Inhibition of the phosphatidylinositol 3-kinase pathway contributes to HT29 and Caco-2 intestinal cell differentiation. *Gastroenterology* 120: 1381–1392.
39. Peterson MD, Mooseker MS (1992) Characterization of the enterocyte-like brush border cytoskeleton of the C2BBE clones of the human intestinal cell line, Caco-2. *J Cell Sci* 102(Pt 3): 581–600.
40. Augenlicht L, Shi L, Mariadason J, Laboisse C, Velcich A (2003) Repression of MUC2 gene expression by butyrate, a physiological regulator of intestinal cell maturation. *Oncogene* 22: 4983–4992.
41. Jorissen RN, Walker F, Pouliot N, Garrett TP, Ward CW, et al. (2003) Epidermal growth factor receptor: mechanisms of activation and signalling. *Exp Cell Res* 284: 31–53.
42. Rego RL, Foster NR, Smyrk TC, Le M, O'Connell MJ, et al. Prognostic effect of activated EGFR expression in human colon carcinomas: comparison with EGFR status. *Br J Cancer* 102: 165–172.
43. Shirasaki H, Seki N, Fujita M, Kikuchi M, Kanaizumi E, et al. (2007) Agonist- and T(H)2 cytokine-induced up-regulation of cysteinyl leukotriene receptor messenger RNA in human monocytes. *Ann Allergy Asthma Immunol* 99: 340–347.
44. Yudina Y, Parhamifar L, Bengtsson AM, Juhas M, Sjölander A (2008) Regulation of the eicosanoid pathway by tumour necrosis factor alpha and leukotriene D(4) in intestinal epithelial cells. *Prostaglandins Leukot Essent Fatty Acids* 79: 223–231.
45. Thompson C, Cloutier A, Bosse Y, Poisson C, Larivee P, et al. (2008) Signaling by the cysteinyl-leukotriene receptor 2. Involvement in chemokine gene transcription. *J Biol Chem* 283: 1974–1984.
46. Early SB, Barekzi E, Negri J, Hise K, Borish L, et al. (2007) Concordant modulation of cysteinyl leukotriene receptor expression by IL-4 and IFN-gamma on peripheral immune cells. *Am J Respir Cell Mol Biol* 36: 715–720.
47. Pfeffer LM, Dinarello CA, Herberman RB, Williams BR, Borden EC, et al. (1998) Biological properties of recombinant alpha-interferons: 40th anniversary of the discovery of interferons. *Cancer Res* 58: 2489–2499.
48. Tilg H (1997) New insights into the mechanisms of interferon alfa: an immunoregulatory and anti-inflammatory cytokine. *Gastroenterology* 112: 1017–1021.
49. Luo JL, Maeda S, Hsu LC, Yagita H, Karin M (2004) Inhibition of NF-kappaB in cancer cells converts inflammation-induced tumor growth mediated by TNFalpha to TRAIL-mediated tumor regression. *Cancer Cell* 6: 297–305.
50. Borden EC, Sen GC, Uze G, Silverman RH, Ransohoff RM, et al. (2007) Interferons at age 50: past, current and future impact on biomedicine. *Nat Rev Drug Discov* 6: 975–990.
51. Ho SB, Niehans GA, Lyftogt C, Yan PS, Cherwitz DL, et al. (1993) Heterogeneity of mucin gene expression in normal and neoplastic tissues. *Cancer Res* 53: 641–651.
52. Velcich A, Yang W, Heyer J, Fragale A, Nicholas C, et al. (2002) Colorectal cancer in mice genetically deficient in the mucin Muc2. *Science* 295: 1726–1729.
53. Van der Sluis M, De Koning BA, De Bruijn AC, Velcich A, Meijerink JP, et al. (2006) Muc2-deficient mice spontaneously develop colitis, indicating that MUC2 is critical for colonic protection. *Gastroenterology* 131: 117–129.
54. Massoumi R, Nielsen CK, Azemovic D, Sjölander A (2003) Leukotriene D4-induced adhesion of Caco-2 cells is mediated by prostaglandin E2 and upregulation of alpha2beta1-integrin. *Exp Cell Res* 289: 342–351.