



# LUND UNIVERSITY

## Three-year outcome of rivastigmine treatment in Alzheimer's disease in a routine clinical setting.

Wattmo, Carina; Minthon, Lennart; Wallin, Åsa

2013

*Document Version:*

Publisher's PDF, also known as Version of record

[Link to publication](#)

*Citation for published version (APA):*

Wattmo, C., Minthon, L., & Wallin, Å. (2013). *Three-year outcome of rivastigmine treatment in Alzheimer's disease in a routine clinical setting.*. Poster session presented at 11th International Conference on Alzheimer's & Parkinson's Diseases (AD/PD 2013), Florence, Italy.

*Total number of authors:*

3

### General rights

Unless other specific re-use rights are stated the following general rights apply:

Copyright and moral rights for the publications made accessible in the public portal are retained by the authors and/or other copyright owners and it is a condition of accessing publications that users recognise and abide by the legal requirements associated with these rights.

- Users may download and print one copy of any publication from the public portal for the purpose of private study or research.
- You may not further distribute the material or use it for any profit-making activity or commercial gain
- You may freely distribute the URL identifying the publication in the public portal

Read more about Creative commons licenses: <https://creativecommons.org/licenses/>

### Take down policy

If you believe that this document breaches copyright please contact us providing details, and we will remove access to the work immediately and investigate your claim.

LUND UNIVERSITY

PO Box 117  
221 00 Lund  
+46 46-222 00 00

# Three-Year Outcome of Rivastigmine Treatment in Alzheimer's Disease in a Routine Clinical Setting



Carina Wattmo, Lennart Minthon, Åsa K Wallin

Clinical Memory Research Unit, Department of Clinical Sciences, Malmö, Lund University, Sweden



## Conclusions

Long-term rivastigmine treatment in AD yielded positive cognitive, global and functional outcomes in a routine clinical setting. Completers of the 3-year study tolerated higher doses of rivastigmine better than did the patients who dropped out from the study.

## Background and objectives

Alzheimer's disease (AD) is the most common diagnosis among the dementia disorders. AD is characterized by a progressive decline in cognitive and practical abilities and leads to major difficulties in the management of daily life after only a few years of illness. Currently, the main therapy used for mild-to-moderate AD is cholinesterase inhibitor (ChEI) treatment, which may delay disease progression. Long-term, placebo-controlled studies of ChEIs in AD are not permitted for ethical reasons. Therefore, the advancement of knowledge on longitudinal outcomes in different domains warrants well-designed naturalistic studies. The aim of this study was to explore the 3-year effectiveness of rivastigmine treatment.

## Methods

The Swedish Alzheimer Treatment Study (SATS) is a prospective, open, non-randomized and multicentre study for evaluating ChEI therapy in clinical practice. In total, 269 outpatients with a clinical diagnosis of AD received rivastigmine. Patients were assessed using cognitive tests (MMSE and ADAS-cog), global performance (CIBIC) and instrumental ADL (IADL) at baseline, after 2 months (MMSE and CIBIC only) and every 6 months, for a total period of 3 years. The 2-year outcomes of this study have been published previously [1]. The outcomes were compared with mathematical models of change in ADAS-cog [2] and IADL scores [3, 4] in untreated patients with AD. These models take into consideration the rivastigmine-treated SATS patient scores at baseline. The rates of change were calculated for each individual and illustrated in the figures. The expected decline in MMSE score based on earlier reported untreated historical patients with AD was estimated at 2–4 points/year [5, 6]. Three groups of response were defined at each CIBIC interval: 1–3 indicated improvement, 4 indicated no change and 5–7 indicated worsening.

**Table 1.** Baseline characteristics

Number of patients (n)	269
Sex (males/females)	48%/52%
Estimated age at onset, years <sup>a</sup>	71.1 ± 8.0
Age at the start of rivastigmine treatment, years <sup>a</sup>	74.0 ± 7.7
Duration of AD, years <sup>a</sup>	2.9 ± 2.2
Education, years <sup>a</sup>	9.4 ± 2.5
MMSE score, range 30–0 <sup>a</sup>	23.0 ± 4.3
ADAS-cog score, range 0–70 <sup>a</sup>	18.1 ± 8.8
IADL score, range 8–31 <sup>a</sup>	14.6 ± 5.2

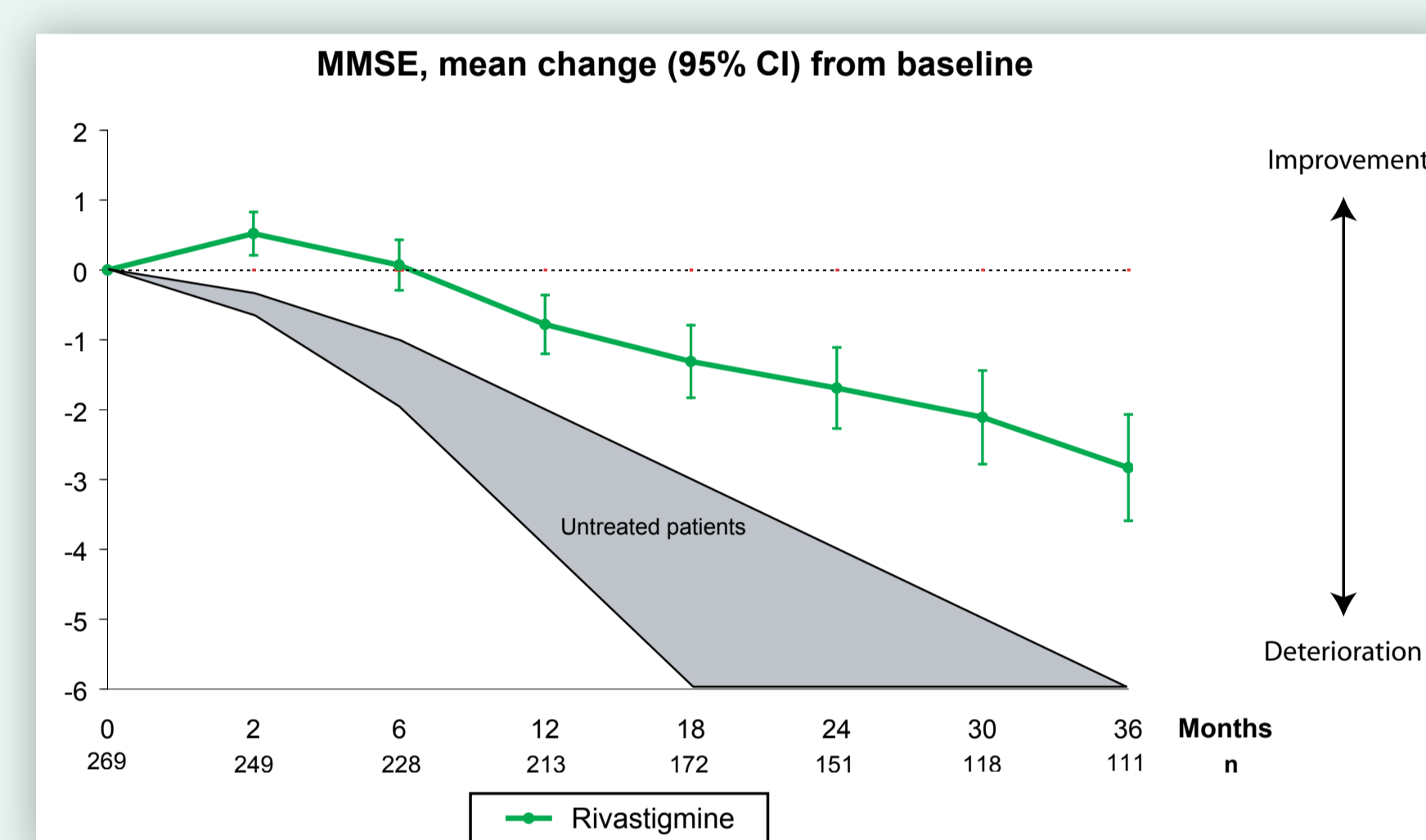
<sup>a</sup>mean ± standard deviation (SD)

ADAS-cog, Alzheimer's Disease Assessment Scale-cognitive subscale; IADL, Instrumental Activities of Daily Living; MMSE, Mini-Mental State Examination

## Results

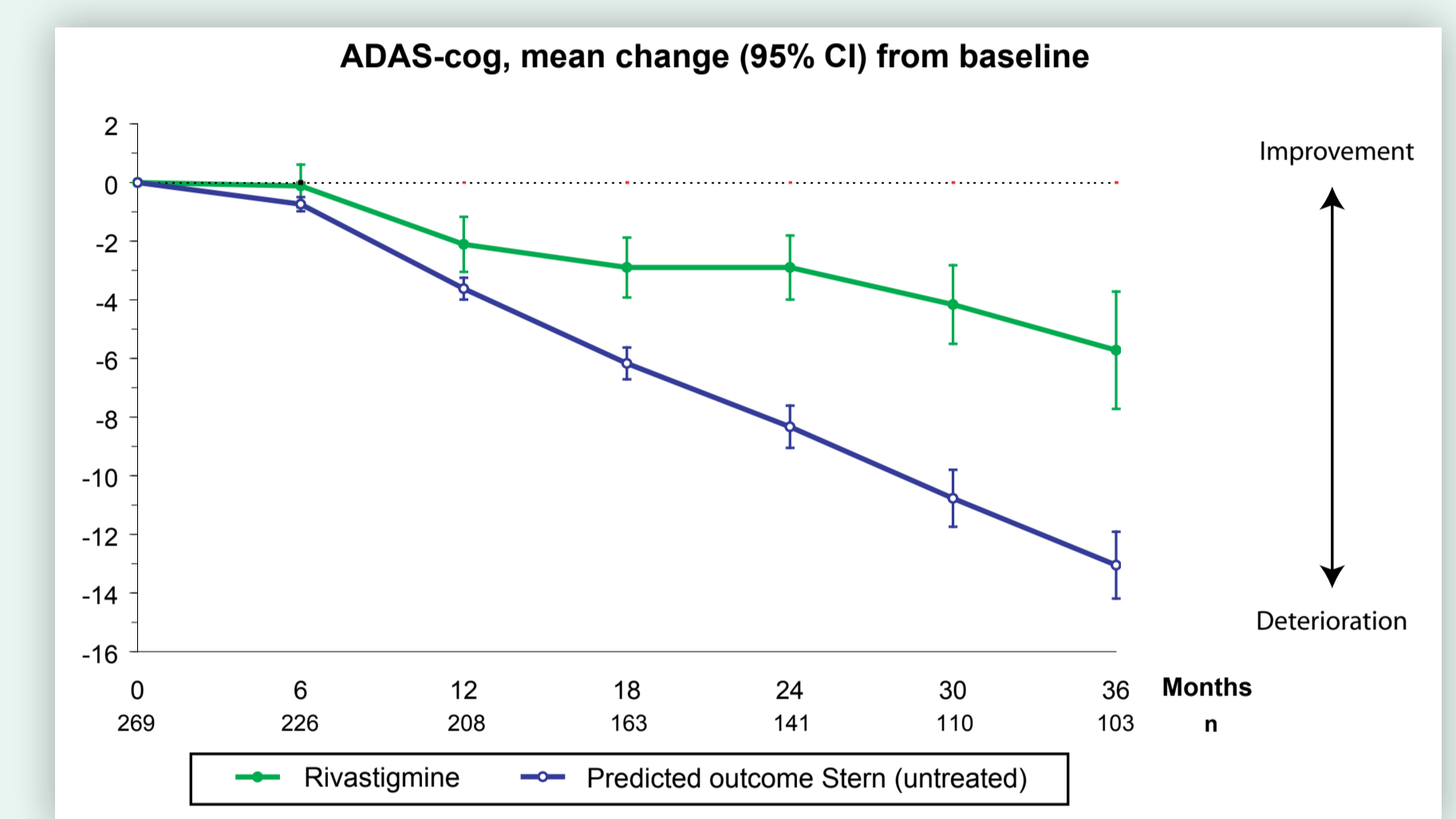
The mean ± SD dose of rivastigmine was 6.2 ± 2.1 mg per day during the study. Three-year completers (n = 117, 44%) received higher mean doses than did drop-outs (7.2 ± 1.9 vs 5.5 ± 2.0 mg/day, p < 0.001).

**Figure 1.**



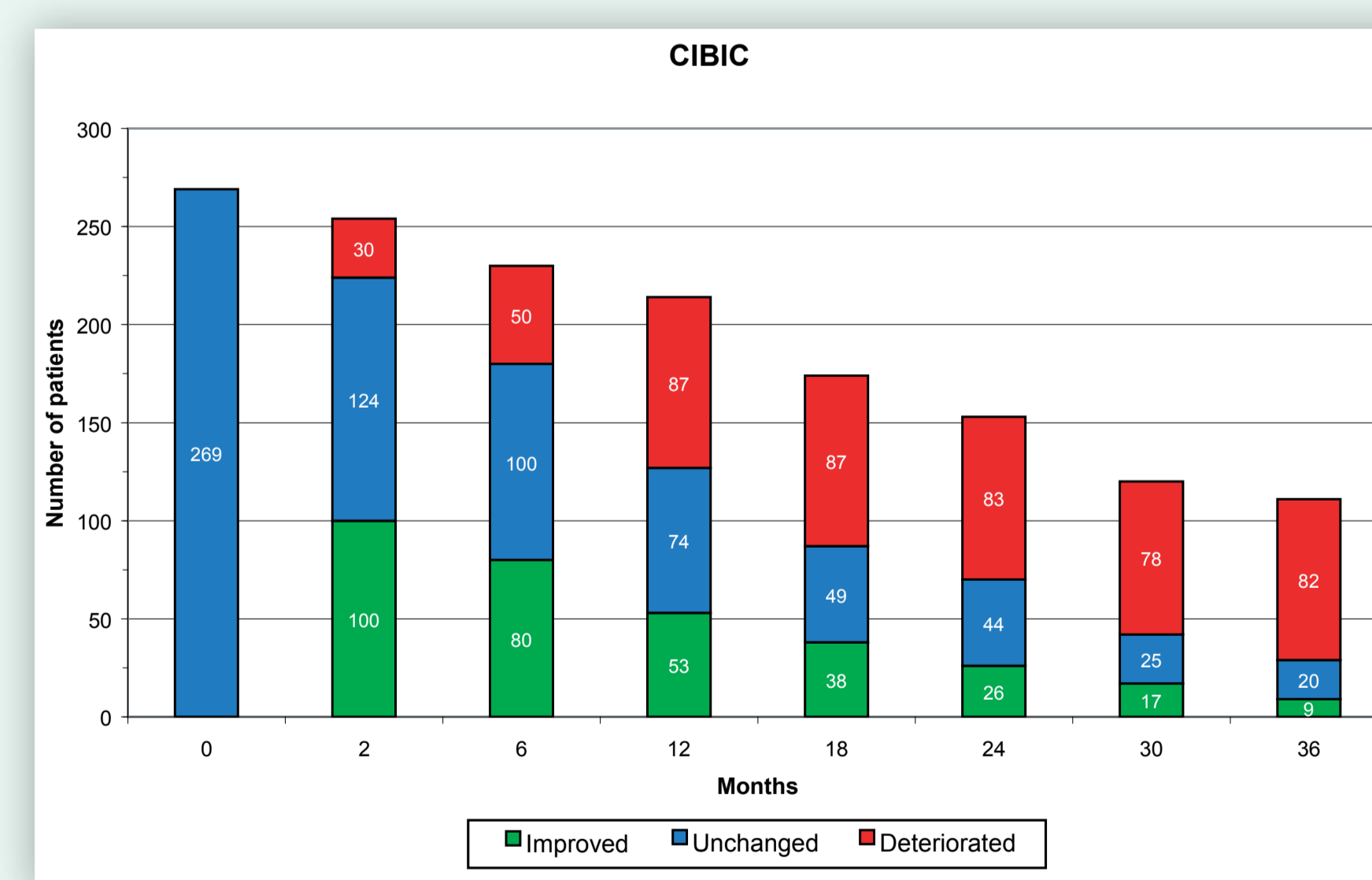
The mean change in MMSE score from the baseline remained above the baseline level for 6 months. After 3 years of rivastigmine treatment, the mean decline of MMSE score from the baseline was 2.8 points (95% CI, 2.1–3.6) (shaded area, 2–4 points/year: expected decline in untreated AD patients).

**Figure 2.**



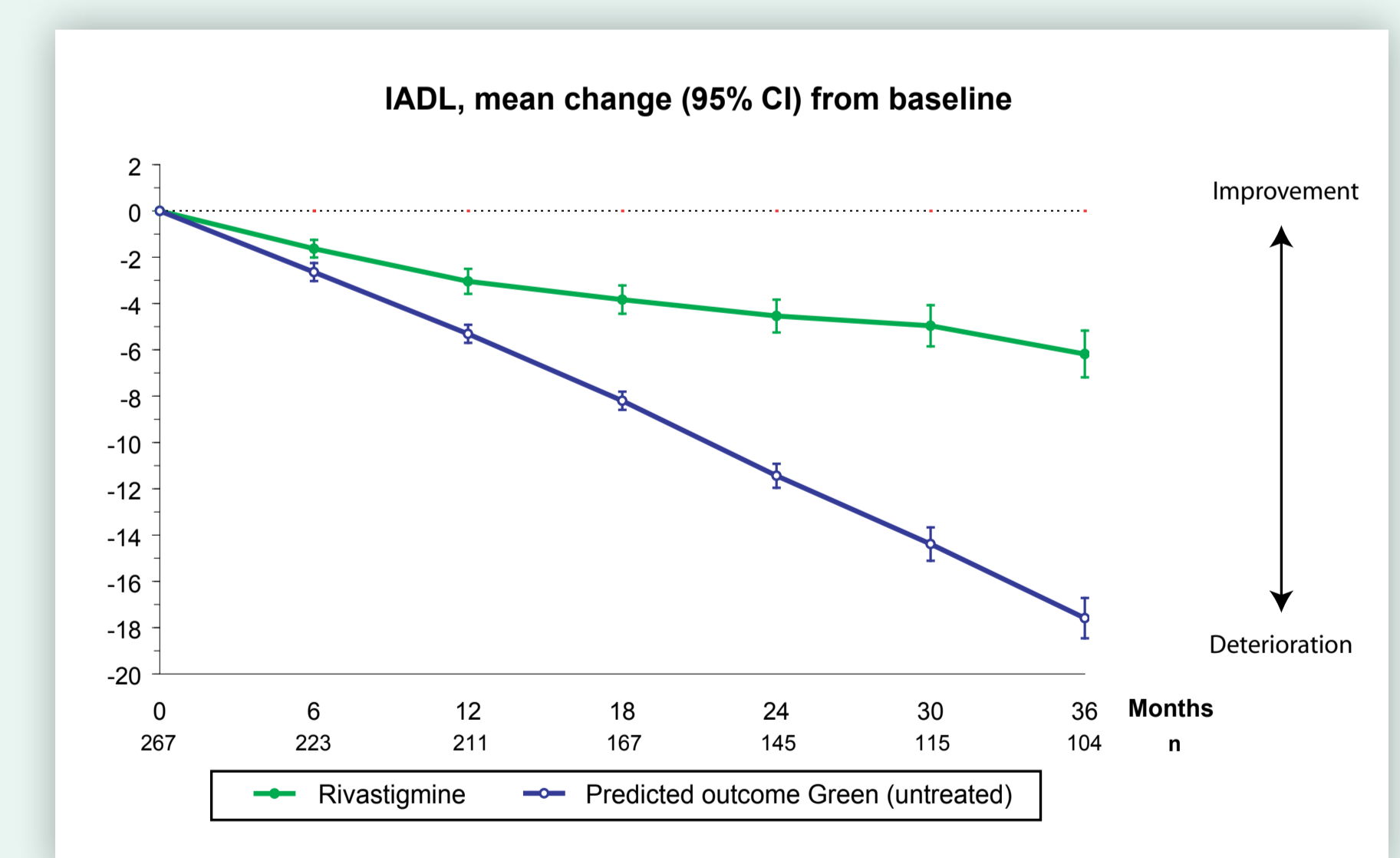
The mean change in ADAS-cog score after 3 years of rivastigmine treatment was 5.7 points (95% CI, 3.7–7.7), which was significantly better than the score predicted by the Stern equation had these SATS patients remained untreated (13.1 points; 95% CI, 11.9–14.2, p < 0.001).

**Figure 3.**



Among the completers, 26% of patients exhibited global improvement or no changes after 3 years of rivastigmine treatment.

**Figure 4.**



The mean change in IADL score after 3 years of rivastigmine treatment was 6.2 points (95% CI, 5.2–7.2), which was significantly better than the score predicted by the Green equation had these SATS patients remained untreated (17.6 points; 95% CI, 16.7–18.5; p < 0.001).

## References

1. Minthon, L., Wallin, A.K., Eriksson, S., Wattmo, C., and Andreasen, N., Long-term rivastigmine treatment in a routine clinical setting. *Acta Neurologica Scandinavica*, 2009. 119(3): p. 180-5.
2. Stern, R.G., Mohs, R.C., Davidson, M., Schmeidler, J., Silverman, J., Kramer-Ginsberg, E., Searcey, T., Bierer, L., and Davis, K.L., A longitudinal study of Alzheimer's disease: measurement, rate, and predictors of cognitive deterioration. *Am J Psychiatry*, 1994. 151(3): p. 390-6.
3. Green, C.R., Mohs, R.C., Schmeidler, J., Aryan, M., and Davis, K.L., Functional decline in Alzheimer's disease: a longitudinal study. *J Am Geriatr Soc*, 1993. 41(6): p. 654-61.
4. Imbimbo, B.P., Verdelli, G., Martelli, P., and Marchesini, D., Two-year treatment of Alzheimer's disease with eptastigmine. The Eptastigmine Study Group. *Dement Geriatr Cogn Disord*, 1999. 10(2): p. 139-47.
5. Morris, J.C., Edland, S., Clark, C., Galasko, D., Koss, E., Mohs, R., van Belle, G., Fillenbaum, G., and Heyman, A., The consortium to establish a registry for Alzheimer's disease (CERAD). Part IV. Rates of cognitive change in the longitudinal assessment of probable Alzheimer's disease. *Neurology*, 1993. 43(12): p. 2457-65.
6. Han, L., Cole, M., Bellavance, F., McCusker, J., and Primeau, F., Tracking cognitive decline in Alzheimer's disease using the mini-mental state examination: a meta-analysis. *Int Psychogeriatr*, 2000. 12(2): p. 231-47.

## Contact address:

Carina Wattmo, Biostatistician, RN, PhD, Clinical Memory Research Unit, Department of Clinical Sciences, Malmö, Lund University, SE-205 02 Malmö, Sweden.  
Tel +46 40 33 56 01, Fax +46 40 33 56 57, E-mail: carina.wattmo@skane.se  
Poster presented at the 11th International Conference on Alzheimer's & Parkinson's Diseases (AD/PD 2013). Florence, March 6–10, 2013.