



LUND UNIVERSITY

The red-listed *Cetrelia cetrarioides* (Parmeliaceae) is confirmed by molecular data in Belarus

Tsurykau, Andrei; Golubkov, Vladimir; Persson, Per-Erik; Thell, Arne

Published in:
Proceedings of Francisk Skorina Gomel State University

2021

Document Version:
Publisher's PDF, also known as Version of record

[Link to publication](#)

Citation for published version (APA):
Tsurykau, A., Golubkov, V., Persson, P.-E., & Thell, A. (2021). The red-listed *Cetrelia cetrarioides* (Parmeliaceae) is confirmed by molecular data in Belarus. *Proceedings of Francisk Skorina Gomel State University*, 126(3), 152-153.

Total number of authors:
4

Creative Commons License:
Unspecified

General rights

Unless other specific re-use rights are stated the following general rights apply:
Copyright and moral rights for the publications made accessible in the public portal are retained by the authors and/or other copyright owners and it is a condition of accessing publications that users recognise and abide by the legal requirements associated with these rights.

- Users may download and print one copy of any publication from the public portal for the purpose of private study or research.
- You may not further distribute the material or use it for any profit-making activity or commercial gain
- You may freely distribute the URL identifying the publication in the public portal

Read more about Creative commons licenses: <https://creativecommons.org/licenses/>

Take down policy

If you believe that this document breaches copyright please contact us providing details, and we will remove access to the work immediately and investigate your claim.

LUND UNIVERSITY

PO Box 117
221 00 Lund
+46 46-222 00 00

УДК: 582.29 (476.2)

The red-listed *Cetrelia cetrarioides* (Parmeliaceae) is confirmed by molecular data in Belarus

A.G. TSURYKAU¹, V.V. GOLUBKOV, P.-E. PERSSON², A. THELL²

The new locality of the Red-listed lichen *Cetrelia cetrarioides* was discovered in Belovezhskaya Puscha National Park. The occurrence of this species was confirmed by the sequence of the ITS region.

Keywords: biodiversity, distribution, Red Data Book, lichens, ITS.

Новое место произрастания краснокнижного лишайника *Cetrelia cetrarioides* выявлено в национальном парке «Беловежская пушча». Определение вида подтверждено секвенированием фрагмента ITS оперона 5.8S гена ядерной рДНК.

Ключевые слова: биоразнообразие, распространение, Красная книга, лишайники, ITS.

The genus *Cetrelia* W.L. Culb. & C.F. Culb. is currently represented by 18 species worldwide [1], of which only four species occur in Europe [2], [3]. In Belarus, three species were confirmed by means of thin-layer chromatography (TLC) during the recent revision of 203 collections from the herbaria of GRSU, GSU, MSK, MSKH and MSKU, namely *Cetrelia cetrarioides* (Duby) W.L. Culb. & C.F. Culb., *C. monachorum* (Zahlbr.) W.L. Culb. & C.F. Culb. and *C. olivetorum* (Nyl.) W.L. Culb. & C.F. Culb. [4]. Of these, *C. cetrarioides* appeared to be the least frequent one being known from 13 records only.

A fieldtrip to Belovezhskaya Puscha National Park was made by the first and the second authors in August 2018. The purposes of the trip were taxonomical investigations of the isidiate *Parmelia* species [5] and populational studies to re-assess the species boundaries between *Usnea subfloridana* and *Usnea florida* [6]. The detection of new localities of rare and Red-listed species was also among the main goals of the excursions.

During the fieldtrip, seven new localities of well-developed populations of the *Cetrelia* species were found. Of these, two appeared to be *Cetrelia monachorum* and five were identified as belonging to *Cetrelia olivetorum* by TLC. No new localities of the rarest *Cetrelia cetrarioides* were believed to have been found [7]. However, the investigation of one isidiate *Parmelia* collection revealed few young small *Cetrelia* thalli. Molecular studies suggested these as belonging to *Cetrelia cetrarioides*.

ITS-sequences were amplified with the primers ITS5 and ITS4 [8], and extraction of total DNA and amplification of the ITS1-5.8S-ITS2 ribosomal RNA region followed the standard methods [9]. BLAST searches were performed for the sequences [10] which were aligned by MUSCLE algorithm in MEGA software package and compared with sequences from GenBank (<http://www.ncbi.nlm.nih.gov>).

The evolutionary history was inferred using the Maximum Parsimony method for five sequences, of which four were downloaded from GenBank (Table 1). The phylogenetic tree shows a well delimited *Cetrelia cetrarioides* clade which includes the Belarusian specimen (Figure 1).

There are two specimens of *Cetrelia cetrarioides* known from the two last decades, both from the Northern Belarus [4]. The studied specimen confirms the presence of this species in Belovezhskaya Puscha National Park nowadays.

Table 1 – Location, collector and GenBank accession numbers of sequences used in the analyses

Species	Location, collector, voucher	GenBank Accession Number
<i>Cetrelia cetrarioides</i>	Norway, Rui and Timdal O-L-200022	MK812062
<i>Cetrelia cetrarioides</i>	Spain, Ruibal MAF:Lich 15552	JN943844
<i>Cetrelia cetrarioides</i>	Belarus, Tsurykau s.n.	MZ028437
<i>Cetrelia olivetorum</i>	Estonia, Randlane and Saag CKM59	KX685871
<i>Cetrelia monachorum</i>	Russia, Notov CKM52	KX685865

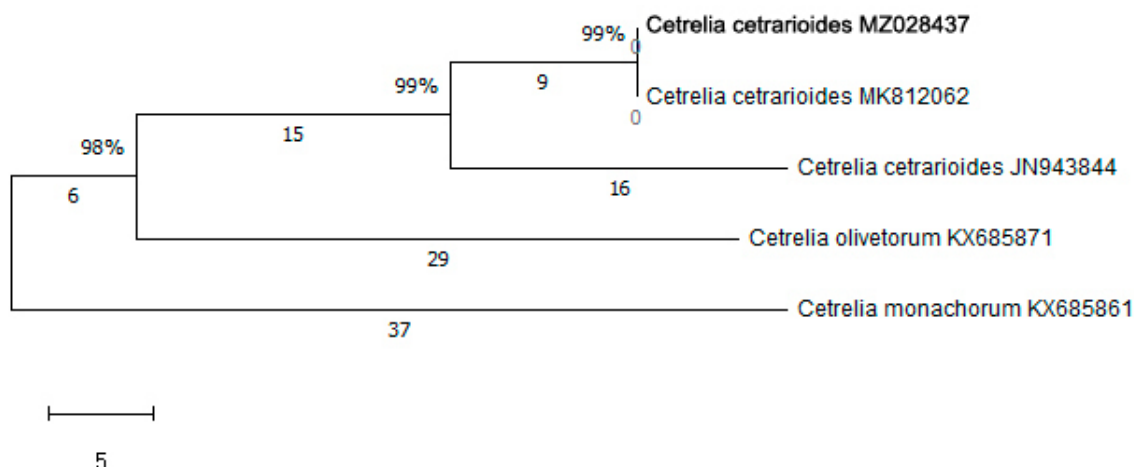


Figure 1 – A Bootstrap consensus tree based on an analysis of 5 ITS *Cetrelia* sequences using Maximum Parsimony method. Belarusian specimen is marked in bold

Specimen examined. Belarus, Brest region, Kamenets district, Belovezhskaja Puscha National Park, Khvoynik forest, 349 q., 5 km N of Khvoynik village, 52°44'N, 23°58'E, oak forest, on fallen moss-covered branch of *Quercus robur*, leg. A. Tsurykau, 09.08.2018.

Literature

1. Outline of fungi and fungus-like taxa / N. N. Wijayawardene [et al.] // *Mycosphere*. – 2020. – Vol. 11, № 1. – P. 1060–1456.
2. A first checklist of parmelioid and similar lichens in Europe and some adjacent territories, adopting revised generic circumscriptions and with indications of species distributions / D. L. Hawksworth [et al.] // *The Lichenologist*. – 2008. – Vol. 40. – P. 1–21.
3. The checklist of parmelioid and similar lichens in Europe and some adjacent territories: additions and corrections / D. L. Hawksworth [et al.] // *The Lichenologist*. – 2011. – Vol. 43. – P. 639–645.
4. The lichen genus *Cetrelia* in Belarus: distribution, ecology and conservation / P. Bely [et al.] // *Botanica Lithuanica*. – 2014. – Vol. 20, № 2. – P. 69–76.
5. The lichen genus *Parmelia* (Parmeliaceae, Ascomycota) in Belarus / A. Tsurykau [et al.] // *Herzogia*. – 2019. – Vol. 32. – P. 375–384.
6. Low genetic differentiation between apotheciate *Usnea florida* and sorediate *Usnea subfloridana* (Parmeliaceae, Ascomycota) based on microsatellite data / P. Degtjarenko [et al.] // *Fungal Biology*. – 2020. – Vol. 124. – P. 892–902.
7. Golubkov, V. V. Monitoring of rare lichens included in the Red Data Book on the territory of the Belovezhskaya Pushcha National Park (Belarus) / V. Golubkov, A. Tsurykau // *Belovezhskaya Pushcha. Research*. – 2020. – Vol. 17. – In press.
8. Amplification and direct sequencing of fungal ribosomal RNA genes for phylogenetics / T. J. White [et al.] // *PCR protocols: a guide to methods and application* / Eds.: M. A. Innis [et al.]. – San Diego : Academic Press, 1990. – P. 315–322.
9. Notes on the systematics, chemistry and distribution of European *Parmelia* and *Punctelia* species (lichenized ascomycetes) / A. Thell [et al.] // *Sauteria*. – 2008. – Vol. 15. – P. 545–559.
10. Basic local alignment search tool / S. F. Altschul [et al.] // *Journal of Molecular Biology*. – 1990. – Vol. 215. – P. 403–410.

¹Гомельский государственный университет им. Ф. Скорины

²Lund University