



# LUND UNIVERSITY

## Exploring Housing Policies in Five Swedish Municipalities: Alternatives and Priorities

Heller, Christina; Ekstam, Lisa; Haak, Maria; Schmidt, Steven; Slaug, Björn

2021

[Link to publication](#)

### *Citation for published version (APA):*

Heller, C., Ekstam, L., Haak, M., Schmidt, S., & Slaug, B. (2021). *Exploring Housing Policies in Five Swedish Municipalities: Alternatives and Priorities*. Poster session presented at 25th Nordic Gerontology Congress in June 2 - 4 2021 , Reykjavik, Iceland.

*Total number of authors:*

5

### **General rights**

Unless other specific re-use rights are stated the following general rights apply:

Copyright and moral rights for the publications made accessible in the public portal are retained by the authors and/or other copyright owners and it is a condition of accessing publications that users recognise and abide by the legal requirements associated with these rights.

- Users may download and print one copy of any publication from the public portal for the purpose of private study or research.
- You may not further distribute the material or use it for any profit-making activity or commercial gain
- You may freely distribute the URL identifying the publication in the public portal

Read more about Creative commons licenses: <https://creativecommons.org/licenses/>

### **Take down policy**

If you believe that this document breaches copyright please contact us providing details, and we will remove access to the work immediately and investigate your claim.

LUND UNIVERSITY

PO Box 117  
221 00 Lund  
+46 46-222 00 00

# Exploring Housing Policies in Five Swedish Municipalities: Alternatives and Priorities

CHRISTINA HELLER<sup>1</sup>, LISA EKSTAM<sup>1</sup>, MARIA HAAK<sup>1,2</sup>, STEVEN M. SCHMIDT<sup>1</sup>, BJÖRN SLAUG<sup>1</sup>

<sup>1</sup>DEPARTMENT OF HEALTH SCIENCES, FACULTY OF MEDICINE, LUND UNIVERSITY, SWEDEN

<sup>2</sup>DEPARTMENT OF NURSING EDUCATION AND INTEGRATED HEALTH SCIENCES, FACULTY OF HEALTH SCIENCE, KRISTIANSTAD UNIVERSITY, SWEDEN

## Background & Aim

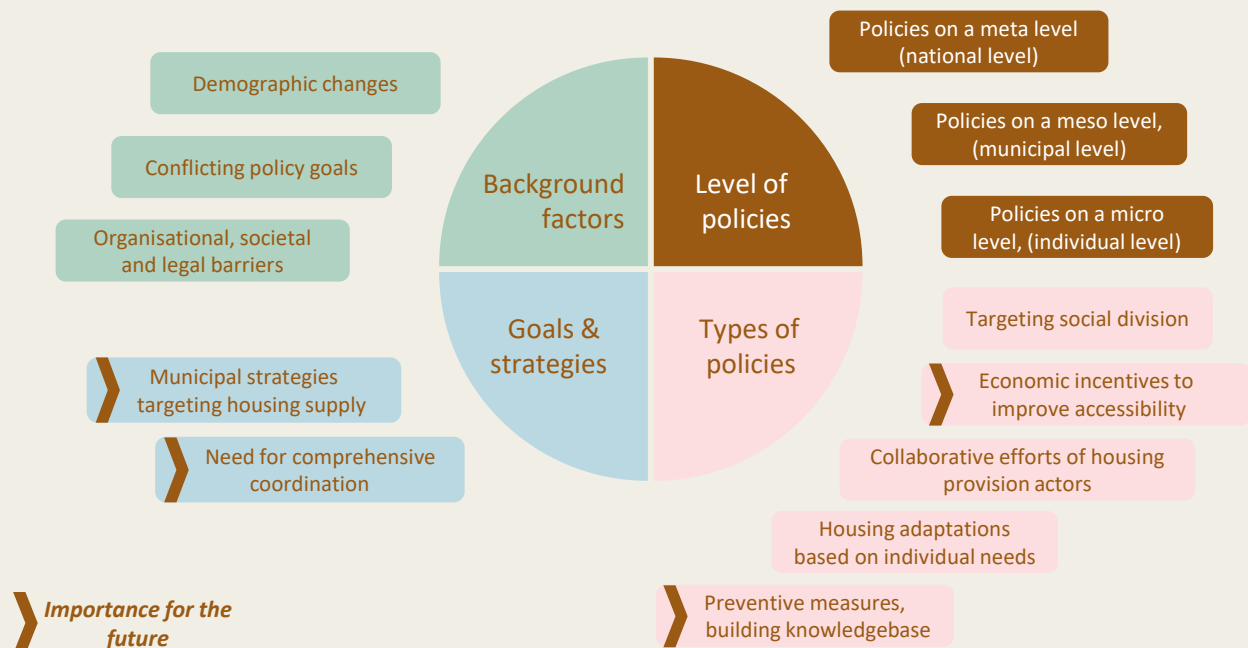
- Housing shortage within metropolitan areas, combined with an ageing population has put pressure on current housing provision policies in Sweden.
- Urgent need to develop sustainable housing policies to accommodate the growing number of seniors in accessible home environments.
- The aim was to gain an in-depth understanding of how municipalities currently address housing accessibility issues and to explore what types of policy solutions they consider for the future.

## Participants & Method

- Qualitative approach, semi-structured interviews.
- Five Swedish municipalities were included to represent a diversity of population, housing situations and geographical areas.
- **Participants (N=10):** two key actors (public officials, housing adaptation grant managers, city architects etc.) from each municipality participated in the interviews.
- Data were analyzed using content analysis according to Mayring (2014).

## Results

- Four themes emerged on how housing accessibility was addressed.
- Categories describing the current situation and what is considered to be of importance for the future.



## Conclusion

- Municipalities struggle with the lack of accessible and affordable housing for the ageing population.
- There is a need to consider how to prevent organizational issues from hampering policy initiatives and implementation.
- Strategies to improve collaboration between municipal and private actors involved in housing provision are also needed.

## Contact & Acknowledgements

Christina Heller

PhD student, Faculty of Medicine, Department of Health Sciences; Lund University Box 157, Baravägen 3 221 00 LUND, Sweden  
Telephone: +46 46-222 18 68, [christina.heller@med.lu.se](mailto:christina.heller@med.lu.se)

This study was accomplished within the context of the Centre for Ageing and Supportive Environments (CASE) at Lund University, by funding from the Swedish Research Council for Health, Working Life and Welfare (FORTE). The PhD student's learning process was supported by the Swedish National Graduate School for Competitive Science on Ageing and Health (SWEAH) funded by the Swedish Research Council.