



LUND UNIVERSITY

The basic helix-loop-helix (bHLH) proteins in breast cancer progression

Kabir, Nuzhat N.; Rönstrand, Lars; Kazi, Julhash U.

Published in:
Medical Oncology

DOI:
[10.1007/s12032-013-0666-9](https://doi.org/10.1007/s12032-013-0666-9)

2013

[Link to publication](#)

Citation for published version (APA):

Kabir, N. N., Rönstrand, L., & Kazi, J. U. (2013). The basic helix-loop-helix (bHLH) proteins in breast cancer progression. *Medical Oncology*, 30(3). <https://doi.org/10.1007/s12032-013-0666-9>

Total number of authors:
3

General rights

Unless other specific re-use rights are stated the following general rights apply:

Copyright and moral rights for the publications made accessible in the public portal are retained by the authors and/or other copyright owners and it is a condition of accessing publications that users recognise and abide by the legal requirements associated with these rights.

- Users may download and print one copy of any publication from the public portal for the purpose of private study or research.
- You may not further distribute the material or use it for any profit-making activity or commercial gain
- You may freely distribute the URL identifying the publication in the public portal

Read more about Creative commons licenses: <https://creativecommons.org/licenses/>

Take down policy

If you believe that this document breaches copyright please contact us providing details, and we will remove access to the work immediately and investigate your claim.

LUND UNIVERSITY

PO Box 117
221 00 Lund
+46 46-222 00 00

"Letter to the editor"

The basic helix-loop-helix (bHLH) proteins in breast cancer progression

Nuzhat N. Kabir¹, Lars Rönnstrand² and Julhash U. Kazi^{1,2*},

¹Laboratory of Computational Biochemistry, KN Biomedical Research Institute, Bagura Road, Barisal,
Bangladesh,

²Experimental Clinical Chemistry, Department of Laboratory Medicine, Lund University, Wallenberg
Laboratory, Skåne University Hospital, 20502 Malmö, Sweden.

*Corresponding author:

Julhash U. Kazi

Experimental Clinical Chemistry

Wallenberg Laboratory, Department of Laboratory Medicine

Lund University, Skåne University Hospital

20502 Malmö, Sweden

E-mail: kazi.uddin@med.lu.se

Tel.: +46 40 33 25 96

Fax: +46 40 33 11 04

Keywords: Basic helix-loop-helix, bHLH, BHLHE40, CDK5RAP3, HES2, HIF1A, ID2, MAX, MLXIP
and USF2.

The basic helix-loop-helix (bHLH) proteins are the major transcription factors acting as transcriptional enhancers or inhibitors of various genes through binding to the canonical E-box sequence. The bHLH proteins are highly conserved in both vertebrates and invertebrates. The bHLH domain is approximately 60 amino acids in length consisting of DNA-binding basic region followed by two alpha-helices separated by a variable loop. The DNA-binding basic region associates with the hexanucleotide E-box sequence. The human genome contains 121 bHLH genes which regulate various cellular processes including embryonic development (1,2). Many of them are involved in cell proliferation, differentiation, oncogenesis, as well as apoptosis. For example, MyoD and NeuroD family bHLH proteins contribute to myogenesis, neurogenic differentiation and pancreatic development, while Myc family bHLH proteins are directly involved in cell differentiation, proliferation and oncogenesis (3).

The bHLH proteins are mainly subdivided in six major groups (A-F). This classification is based on the target E-box sequence. While A-C group members target 6 different hexanucleotide sequences, group D members, ID (inhibitor of differentiation/DNA binding) family proteins lack the basic domain and are thus incapable of interacting DNA. The ID family proteins form protein-protein dimers and function as dominant negative regulator of other bHLH proteins. Expression of ID proteins and their target bHLH proteins differs with the cell type and stage of differentiation, growth or development, and balance of bHLH and ID activity is critical to maintain normal cellular process (3). Thus imbalance in these bHLH proteins contributes to abnormal gene regulation, which is very often observed in cancer (3). In this report we studied expression of bHLH proteins in breast cancer.

Micro-array data available for breast cancer patients were downloaded for NCBI gene expression omnibus (GEO). Data were thoroughly checked for platforms and only Affymetrix Human Genome U133A Array (GPL96) was selected for this study. The methods used for data processing were described previously (4-9). Recent studies suggest that several bHLH proteins are involved in breast cancer control by inducing apoptosis or controlling anti-apoptotic genes (10-12). To understand which genes are

deregulated in breast cancer, we analyzed mRNA expression data from more than 2500 patient samples. The complete set of 121 bHLH genes were used for this analysis (1). We used classical multidimensional scaling (MDS) and principal component analysis (PCA) to identify deregulated bHLH genes. The distance matrix was created using "dist" command in R package. Then "cmdscale" command was used to reduce dimensions. This analysis resulted in a list of 14 deregulated genes (Fig. 1A). Then we applied PCA analysis using "prcomp" command on the same dataset. PCA analysis also resulted in a list of 13 deregulated genes (Fig. 1A). We furthermore analyzed dataset with SAM which generated a list of 30 genes (Fig. 1A). Eight genes BHLHE40, CDK5RAP3, HES2, HIF1A, ID2, MAX, MLXIP and USF2 were common in all three experiments which also supported by the heat map of all bHLH genes (Supplementary figure). Thus we conclude that these eight genes are mostly deregulated bHLH genes in breast cancer.

Then we analyzed whether expression of BHLHE40, CDK5RAP3, HES2, HIF1A, ID2, MAX, MLXIP and USF2 genes has a correlation with patient age. We analyzed samples from patients aged 24 years to 93 years. Most of analyzed genes displayed a poor correlation with patient age (Fig. 1B). Furthermore, expression of BHLHE40, CDK5RAP3, HIF1A, ID2, MAX, MLXIP and USF2 was significantly decreased with increased disease grades (Fig. 1C). While expression of BHLHE40, CDK5RAP3, HIF1A, ID2 and MAX was significantly decreased in Black and Hispanic patient groups in compare to Asian patient group, expression of HES2 and USF2 was significantly increased in Hispanic patient group (Fig. 1D). In addition, we also observed a significant increase of BHLHE40, CDK5RAP3, ID2, MAX and USF2 genes expression in estrogen (ER) and progesterone positive patient groups (Fig 1E). Thus we suggest that expression of bHLH genes is deregulated in breast cancer and can be used to classify patients.

Conflict of Interest: The authors declare no conflict of interest.

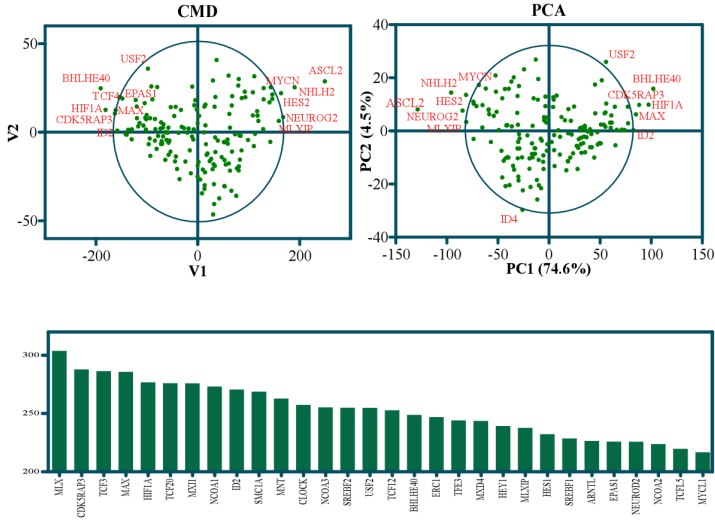
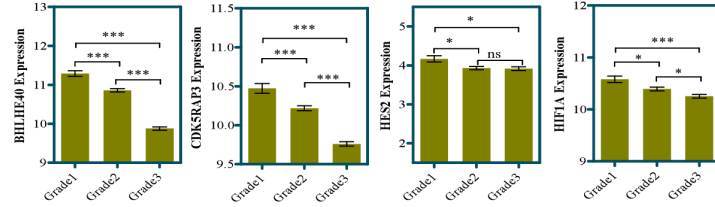
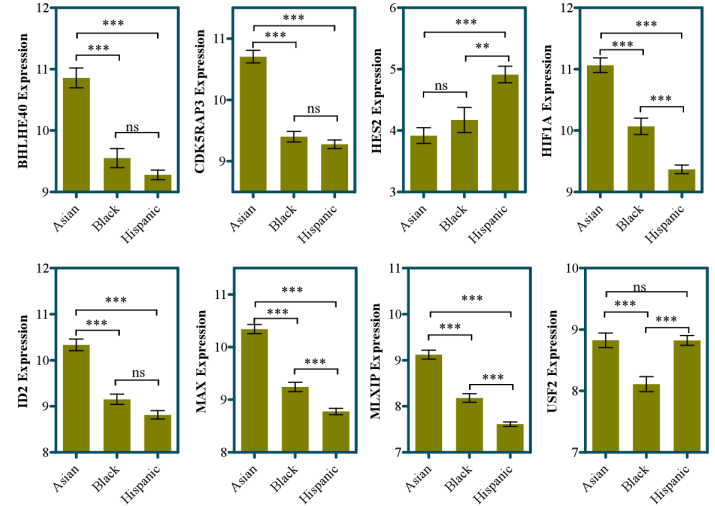
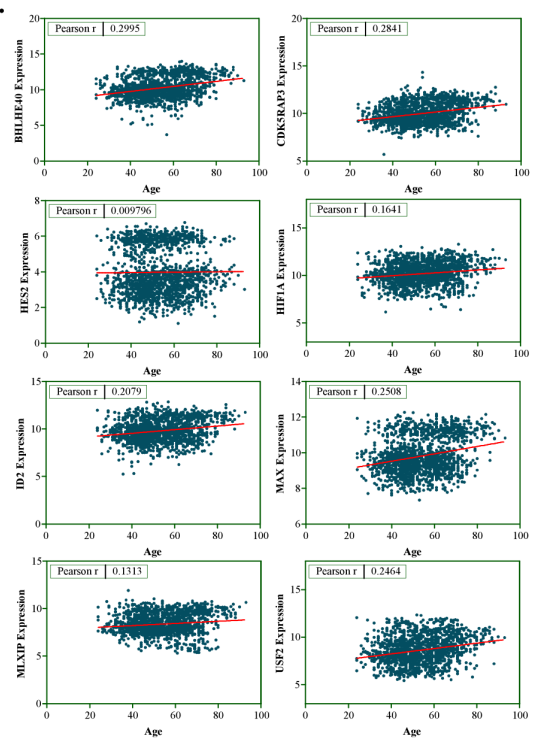
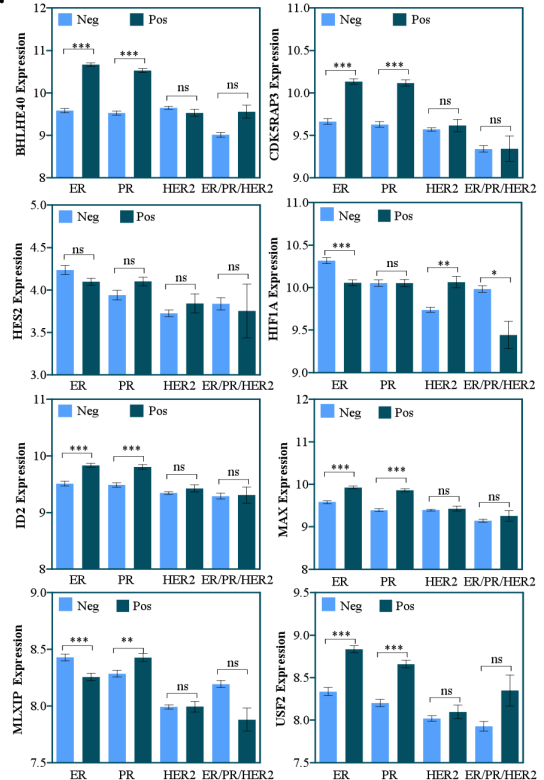
References:

1. Kabir, N. N., Hossain, M. I., and Kazi, J. U. Comparative Studies on Human and Rat Basic Helix-loop-helix Proteins. *Asian Journal of Biological Sciences*. 2011; 4(8):601-608. doi: DOI 10.3923/ajbs.2011.601.608.
2. Jones, S. An overview of the basic helix-loop-helix proteins. *Genome biology*. 2004; 5(6):226. doi: 10.1186/gb-2004-5-6-226.
3. Desprez, P. Y., Sumida, T., and Coppe, J. P. Helix-loop-helix proteins in mammary gland development and breast cancer. *Journal of mammary gland biology and neoplasia*. 2003; 8(2):225-239. doi:
4. Kazi, J. U., and Ronnstrand, L. Suppressor of Cytokine Signaling 2 (SOCS2) associates with FLT3 and negatively regulates downstream signaling. *Molecular oncology*. 2013; 7(3):693-703. doi: 10.1016/j.molonc.2013.02.020.
5. Kabir, N. N., Ronnstrand, L., and Kazi, J. U. Protein kinase C expression is deregulated in chronic lymphocytic leukemia. *Leukemia & lymphoma*. 2013; doi: 10.3109/10428194.2013.769220.
6. Kabir, N. N., Ronnstrand, L., and Kazi, J. U. Deregulation of protein phosphatase expression in acute myeloid leukemia. *Medical oncology*. 2013; 30(2):517. doi: 10.1007/s12032-013-0517-8.
7. Kazi, J. U., Sun, J., Phung, B., Zadjali, F., Flores-Morales, A., and Ronnstrand, L. Suppressor of cytokine signaling 6 (SOCS6) negatively regulates Flt3 signal transduction through direct binding to phosphorylated tyrosines 591 and 919 of Flt3. *The Journal of biological chemistry*. 2012; 287(43):36509-36517. doi: 10.1074/jbc.M112.376111.
8. Kazi, J. U., and Ronnstrand, L. FLT3 signals via the adapter protein Grb10 and overexpression of Grb10 leads to aberrant cell proliferation in acute myeloid leukemia. *Molecular oncology*. 2013; 7(3):402-418. doi: 10.1016/j.molonc.2012.11.003.

9. Kazi, J. U., and Ronnstrand, L. Src-Like adaptor protein (SLAP) binds to the receptor tyrosine kinase Flt3 and modulates receptor stability and downstream signaling. *PloS one*. 2012; 7(12):e53509. doi: 10.1371/journal.pone.0053509.
10. Wu, Y., Sato, F., Bhawal, U. K., Kawamoto, T., Fujimoto, K., Noshiro, M., Morohashi, S., Kato, Y., and Kijima, H. Basic helix-loop-helix transcription factors DEC1 and DEC2 regulate the paclitaxel-induced apoptotic pathway of MCF-7 human breast cancer cells. *Int J Mol Med*. 2011; 27(4):491-495. doi: 10.3892/ijmm.2011.617.
11. Liu, Y., Sato, F., Kawamoto, T., Fujimoto, K., Morohashi, S., Akasaka, H., Kondo, J., Wu, Y., Noshiro, M., Kato, Y., and Kijima, H. Anti-apoptotic effect of the basic helix-loop-helix (bHLH) transcription factor DEC2 in human breast cancer cells. *Genes to cells : devoted to molecular & cellular mechanisms*. 2010; 15(4):315-325. doi: 10.1111/j.1365-2443.2010.01381.x.
12. Swarbrick, A., Akerfeldt, M. C., Lee, C. S., Sergio, C. M., Caldon, C. E., Hunter, L. J., Sutherland, R. L., and Musgrove, E. A. Regulation of cyclin expression and cell cycle progression in breast epithelial cells by the helix-loop-helix protein Id1. *Oncogene*. 2005; 24(3):381-389. doi: 10.1038/sj.onc.1208188.

Figure legend:

Fig. 1: (A) Deregulated bHLH genes in breast cancer. (B) Correlation bHLH genes and breast cancer patient age. (C) Expression of bHLH genes in respect to breast cancer grades. (D) Expression of bHLH genes in Asian, Black and Hispanic races. (E) Expression of bHLH genes in patients with different mutations.

A.**C.****D.****B.****E.**

Supplementary figure: Heat map of bHLH genes in breast cancer patients.

