



# LUND UNIVERSITY

## Can increased weathering rates due to future warming compensate for base cation losses following whole-tree harvesting in spruce forests?

Akselsson, Cecilia; Olsson, Jonas; Belyazid, Salim; Capell, René

*Published in:*  
Biogeochemistry

*DOI:*  
[10.1007/s10533-016-0196-6](https://doi.org/10.1007/s10533-016-0196-6)

2016

[Link to publication](#)

*Citation for published version (APA):*  
Akselsson, C., Olsson, J., Belyazid, S., & Capell, R. (2016). Can increased weathering rates due to future warming compensate for base cation losses following whole-tree harvesting in spruce forests? *Biogeochemistry*, 128(1-2), 89-105. <https://doi.org/10.1007/s10533-016-0196-6>

*Total number of authors:*  
4

### General rights

Unless other specific re-use rights are stated the following general rights apply:  
Copyright and moral rights for the publications made accessible in the public portal are retained by the authors and/or other copyright owners and it is a condition of accessing publications that users recognise and abide by the legal requirements associated with these rights.

- Users may download and print one copy of any publication from the public portal for the purpose of private study or research.
- You may not further distribute the material or use it for any profit-making activity or commercial gain
- You may freely distribute the URL identifying the publication in the public portal

Read more about Creative commons licenses: <https://creativecommons.org/licenses/>

### Take down policy

If you believe that this document breaches copyright please contact us providing details, and we will remove access to the work immediately and investigate your claim.

LUND UNIVERSITY

PO Box 117  
221 00 Lund  
+46 46-222 00 00

1 Title:

2 Can increased weathering rates due to future warming compensate for base cation losses following whole-  
3 tree harvesting in spruce forests?

4

5 Authors:

6 Akselsson, Cecilia (corresponding author)<sup>a</sup>

7 Olsson, Jonas<sup>b</sup>

8 Belyazid, Salim<sup>c</sup>

9 Capell, René<sup>b</sup>

10

11 <sup>a</sup>Department of Physical Geography and Ecosystem Science, Lund University, Sölvegatan 12, SE-223 62

12 Lund, Sweden

13 Phone: +46 46 222 86 89

14 Fax: +46 46 222 03 21

15 E-mail: cecilia.akselsson@nateko.lu.se

16

17 <sup>b</sup>Swedish Meteorological and Hydrological Institute (SMHI), SE-601 76 Norrköping, Sweden

18

19 <sup>c</sup>Department of Physical Geography , Stockholm University, Svante Arrhenius väg 8, SE-106 91

20 Stockholm, Sweden

21

22 Acknowledgements

23 We acknowledge funding from The Swedish Environmental Protection Agency, through the project CLEO  
24 (Climate Change and Environmental Objectives), and the Swedish Research Council, Formas, through the  
25 projects Hydroimpacts 2.0 and QWARTS (Quantifying Weathering Rates for Sustainable Forestry). Forest  
26 and soil input data were obtained from the Swedish National Forest Inventory database, managed by the

27 Department of Forest Resource Management at the Swedish University of Agricultural Sciences (SLU),  
28 and from the Soil Geochemistry database, managed by the Geological Survey of Sweden (SGU).  
29

30 Abstract

31 Whole-tree harvesting, i.e. harvesting of stems, branches and tops, has become increasingly common  
32 during recent decades due to the increased demand for renewable energy. Whole-tree harvesting leads to an  
33 increase in base cation losses from the ecosystem, which can counteract recovery from acidification. An  
34 increase in weathering rates due to higher temperatures is sometimes suggested as a process that may  
35 counteract the acidifying effect of whole-tree harvesting. In this study the potential effect of increasing  
36 temperature on weathering rates was compared with the increase in base cation losses following whole-tree  
37 harvesting in spruce forests, along a temperature gradient in Sweden. The mechanistic model PROFILE  
38 was used to estimate weathering rates at National Forest Inventory sites at today's temperature and the  
39 temperature in 2050, as estimated by two different climate projections. The same dataset was used to  
40 calculate base cation losses following stem-only and whole-tree harvesting. The calculations showed that  
41 the increase in temperature until 2050 would result in an increase in the base cation weathering rate of 20–  
42 33%, and that whole-tree harvesting would lead to an increase in base cation losses of 66% on average,  
43 compared to stem-only harvesting. A sensitivity analysis showed that moisture changes are important for  
44 future weathering rates, but the effect of the temperature change was dominating even when the most  
45 extreme moisture changes were applied. It was concluded that an increase in weathering rates resulting  
46 from higher temperatures would not compensate for the increase in base cation losses following whole-tree  
47 harvesting, except in the northernmost part of Sweden.

48

49 Keywords: weathering, climate change, whole-tree harvesting, forest fuels, acidification

50

51 1. Introduction

52 Emissions of acidifying substances have decreased substantially in Europe in recent decades (Nyiri et al.  
53 2009), which has led to the initiation of the recovery of surface waters in many areas (Evans et al. 2001;  
54 Skjelkvåle et al. 2001; Fölster and Wilander 2002). However, both measurements (Graf Pannatier et al.  
55 2011; Pihl Karlsson et al. 2011; Akselsson et al. 2013) and modelling (Sverdrup et al. 2005) indicate that  
56 the recovery of soils is slow, which can be explained by the slow replacement, through weathering and  
57 deposition, of the base cations that were lost during acidification. Lakes can not be expected to fully  
58 recover until soils are recovered. Moreover, the acidifying impact of forestry in Sweden has increased in  
59 recent decades, which may further delay recovery (Hultberg and Ferm 2004; Akselsson et al. 2007). In  
60 relation to the EU directive 2009/28/EG, Sweden has committed to achieving a share of energy from  
61 renewable sources in total energy consumption of 49% by 2020. The increasing demand for renewable  
62 energy has made whole-tree harvesting, i.e. harvesting of not only stems but also branches and tops, more  
63 common. In 2013, harvesting of branches and tops was reported for almost half of the planned final  
64 fellings. Stump harvesting was still not common (Swedish Forest Agency 2014). The high concentrations  
65 of base cations in branches and tops lead to a substantial increase in the loss of base cations following  
66 whole-tree harvesting compared to conventional stem harvesting (Akselsson et al. 2007). Iwald et al.  
67 (2013) estimated that the acidifying effect of harvesting of spruce (including branches, tops and stumps)  
68 was 114–263% of that of acidic deposition, while the corresponding range for pine was 57–108%. Using  
69 dynamic modelling, Aherne et al. (2012) showed that whole-tree harvesting may have a serious effect on  
70 soil nutrient status. Brandtberg and Olsson (2012) studied the long-term effects of whole-tree harvesting,  
71 and found significantly lower concentrations of exchangeable base cations in mineral soil after 15 years.  
72 After 25 years, the exchangeable base cation concentration still tended to be lower after whole-tree  
73 harvesting than after stem-only harvesting, but the effect was not significant. Zetterberg et al. (2013)  
74 studied Ca concentrations in soil and soil water 27-30 years after treatment in the same experiments. They  
75 found that the Ca concentrations in soil water as well as exchangeable Ca in soil were lower after whole-  
76 tree harvesting than after stem-only harvesting. A few years later, 32-35 years after treatment, the effect of  
77 whole-tree harvesting on Ca concentrations in soil water only remained on one of the sites.

78

79 Climate change affects ecosystem processes such as tree growth, decomposition and mineral weathering.  
80 The net effect on acidification may be reinforcement or counteraction, depending on the effects of climate  
81 change and the conditions prevailing at each site. Climate change may lead to increased tree growth and  
82 thus increased base cation uptake, through increased air concentrations of CO<sub>2</sub> in combination with  
83 increased temperatures and prolonged growing seasons (Bergh et al. 2010). However, in areas where  
84 climate change leads to drier conditions and possibly drought, the effect may be the opposite (Kellomäki et  
85 al. 2007). Changes in temperature and moisture affect the rates of both weathering (Brady and Weil 1999)  
86 and decomposition (Berg and McClaugherty 2003). An increase in the release of base cations through  
87 weathering and decomposition has the potential to accelerate recovery from acidification. However, in  
88 nitrogen-rich areas, increased decomposition can lead to nitrate leaching (van Breemen et al. 1998; Wright  
89 and Jenkins 2001), which is an acidifying process. Other effects related to climate change that may affect  
90 recovery are changes in the frequency of sea-salt episodes (Akselsson et al. 2013; Skjelvåle et al. 2007;  
91 Laudon 2008; Hindar et al. 1995), the frequency of drought (Laudon 2008), and changes in conditions  
92 affecting pests (Netherer and Schopf 2010). To conclude, temperature, soil moisture and other effects  
93 related to climate change are key factors in controlling soil and vegetation processes that may affect  
94 recovery from acidification.

95

96 Both the temperature and precipitation are expected to increase substantially throughout Sweden in the  
97 coming decades (see e.g. Lind and Kjellström 2008; Kjellström et al. 2011). Increased temperature and  
98 precipitation may affect soil moisture in different ways, and the net effect is highly uncertain due to the  
99 limited accuracy with which precipitation and evapotranspiration can be simulated by climate models (e.g.  
100 Ehret et al. 2012). The natural long-term process resulting from climate change that can be expected to  
101 counteract acidification most is a potential increase in the weathering rate due to higher temperatures. The  
102 effect can be strengthened or weakened by changed soil moisture, depending on the net effect from  
103 increased temperature and precipitation on the soil moisture. The rate of soil organic matter decomposition  
104 and the subsequent release of nutrients through mineralization may also increase due to increasing  
105 temperatures, but this process is short-lived in the time frame of the current study, and its effect on

106 acidification remains uncertain. In this study we focused on the impact on weathering of the future change  
107 in temperature, which is generally believed to be more robust than the change in precipitation. The main  
108 aim of this study was to determine whether the temperature-induced increase in weathering rate could  
109 counteract the increase in base cation loss due to whole-tree harvesting, including branches and tops, in  
110 different parts of Sweden. The study also comprises a sensitivity analysis for the effect of moisture on  
111 weathering rates. The study was limited to spruce forests, which cover 42% of the forested areas in  
112 Sweden, where most of the whole-tree harvesting is performed, and where the nutrient losses resulting from  
113 harvesting are greatest (Akselsson et al. 1997). Effects of climate change on other processes than  
114 weathering, such as tree growth, are not accounted for in this study.

115

## 116 2. Methods

117 A database from the Swedish Environmental Emissions Data (SMED) consortium, with 2079 areas  
118 covering Sweden and where each area consists of a number of subcatchments merged together, was chosen  
119 as a common platform for the calculations (Brandt et al. 2008). All the data required for the calculations  
120 were transferred to these merged catchments. The weathering rates of the base cations Ca, Mg, K and Na in  
121 the root zone were modelled with the PROFILE model (Sverdrup and Warfvinge 1993) for two time  
122 periods representing present conditions and the conditions in 2050. The changes in temperature projected  
123 by two different climate models were used to obtain an indication of the sensitivity of weathering to the  
124 uncertainties in climate modelling. The effect of moisture on weathering rates was studied in a sensitivity  
125 analysis by performing two extra weathering model runs for each climate scenario, with maximum and  
126 minimum moisture changes based on model-predicted changes in soil moisture over Sweden. Base cation  
127 losses as a result of harvesting were calculated for two forest management scenarios: stem-only and whole-  
128 tree harvesting, as these are common practices in Sweden. Finally, base cation loss through harvesting was  
129 subtracted from the amount provided by weathering, for different combinations of weathering rates  
130 (resulting from temperature projections by the two climate models over the two periods studied) and  
131 management scenarios (stem-only and whole-tree harvesting). The different steps are described in detail  
132 below.

133

134 2.1 Temperature projections

135 In PROFILE yearly averages of soil temperatures in the root zone (the upper 50 cm of the soil) are  
136 required, but these are often not available. However, the average annual soil temperature may be assumed  
137 to be similar to the air temperature (e.g. Zheng et al. 1993), and thus mean yearly air temperatures were  
138 used in this study. The average temperature for the period 1981–2010, meant to represent present  
139 conditions, and the average temperature for the period 2036–2065, meant to represent the temperature  
140 2050, were estimated for the merged catchments, based on the results from two climate model projections,  
141 in the following denoted ECHAM and HADLEY (Table 1). In these projections, global climate simulations  
142 for the period 1961–2100 by models ECHAM5 (Roeckner et al. 2003) and HadCM3 (Johns et al. 2003), in  
143 both cases forced by IPCC emission scenario A1B (Nakićenović et al. 2000), have been regionally  
144 downscaled over Europe by the RCA3 model (Samuelsson et al. 2011; Kjellström et al. 2011). The two  
145 projections were chosen to represent different levels of expected future temperature change. Of the 16  
146 climate model projections reviewed by Kjellström et al. (2011), HADLEY is one of those projecting the  
147 greatest temperature increase in Scandinavia, whereas ECHAM projects a temperature increase in the lower  
148 range. Daily surface temperatures (°C) were bias-corrected using distribution-based scaling (Yang et al.  
149 2010).

150

151 Table 1. Temperature and harvesting scenarios.

152

153 2.2 Harvesting scenarios

154 In the whole-tree harvesting scenario, it was assumed that 100% of the stems was removed together with  
155 60% of the branches and tops, in accordance with a scenario meant to imitate common practise, used by the  
156 Swedish Forest Agency (2008) (Table 1). Furthermore, it was assumed that 75% of the needles  
157 accompanied the branches and tops.

158

159 2.3 Base cation weathering rates at different temperatures

160 Weathering rates were modelled with the PROFILE model, a soil chemistry model originally developed to  
161 calculate the effect of acid rain on soil chemistry (Sverdrup and Warfvinge 1993). It includes process-



162 oriented descriptions of chemical weathering of minerals, leaching and accumulation of dissolved chemical  
163 components and solution equilibrium reactions. PROFILE is a steady-state model, which means that yearly  
164 data or long-term averages are used as input, and not time series as in dynamic models. PROFILE then  
165 calculates the soil solution chemistry at steady state. The soil is divided into soil layers with different  
166 properties, preferably based on the naturally occurring soil stratification. Weathering is calculated using  
167 transition state theory and the geochemical properties of the soil system, such as soil wetness, mineral  
168 surface area, the concentrations of hydrogen, cations and organic acids, temperature and mineral  
169 composition. Four weathering reactions are included in PROFILE, the reaction with H<sup>+</sup>, H<sub>2</sub>O, CO<sub>2</sub> and  
170 organic ligands (R<sup>-</sup>) (Sverdrup and Warfvinge 1993; Warfvinge and Sverdrup 1995). The dependence of  
171 temperature in PROFILE is calculated with rate coefficients for different minerals and different reactions,  
172 taken from laboratory studies and standardized to 8°C using an Arrhenius relation (Sverdrup and  
173 Warfvinge, 1993; Brantley 2008). The expression to adjust the coefficient to ambient temperatures is given  
174 in Equation 1.

175

$$176 \ln(k_T/k_{8^\circ\text{C}}) = (E_A/R) \cdot ((1/281) - (1/T)) \quad (\text{Equation 1})$$

177

178 where E<sub>A</sub> = activation energy (kJ/kmol), R = universal gas constant (kJ/kmol/K) and T = absolute  
179 temperature (K).

180

181 The temperature dependence factors (E<sub>A</sub>/R), used in PROFILE for the minerals in this study, are listed in  
182 Table 2.

183

184 Table 2. Temperature dependence factors (E<sub>A</sub>/R) used in PROFILE for all included minerals, and for the  
185 reactions with H<sup>+</sup>, H<sub>2</sub>O, CO<sub>2</sub> and organic ligands (R<sup>-</sup>).

186

187 Weathering rates for the root zone, here defined as the upper 50 cm of the soil, were modelled based on  
188 data from 17333 Swedish National Forest Inventory (NFI) sites (Hägglund 1985), using the same  
189 methodology and database as described by Akselsson et al. (2008). The root zone was chosen since the

190 soils on the sites can be regarded as well-drained, and the contribution of weathering products from lower  
191 layers via ground water transport can be assumed to be of minor importance. The profiles were divided in  
192 four layers, where the upper layer was organic.

193 PROFILE requires soil input data, e.g. mineralogy, specific surface area, density and soil moisture, as well  
194 as temperature data and data on deposition and net uptake of base cations and nitrogen in trees. Mineralogy  
195 from earlier national studies (e.g. Akselsson et al. 2007), where total chemistry from a national soil  
196 geochemistry database has been recalculated to mineralogy using a normative model (Akselsson et al.  
197 2004), was used. Each NFI site was assigned with the mineralogy composition from the nearest site in the  
198 national soil geochemistry database. Soil texture and moisture has been classified on all NFI sites, and the  
199 classes were translated to specific surface area and volumetric water content using translation tables from  
200 Warfvinge and Sverdrup (1995). Constant, layer-specific values for densities were used for all sites, in  
201 accordance with the national PROFILE modelling in Warfvinge and Sverdrup (1995). Deposition data were  
202 derived from the MATCH model (Langner et al. 1996), and the average deposition from 2006–2008 was  
203 used. Net uptake of base cations and nitrogen, here defined as the base cations and nitrogen lost at  
204 harvesting, was calculated for the stem harvesting scenario and the whole-tree harvesting scenario for all  
205 NFI sites, based on tree growth data on the NFI sites. The methodology is described more thoroughly in  
206 section 2.5. Important input data parameters, their ranges throughout Sweden and their data sources are  
207 summarized in Table 3. The mineralogy distribution for one of the minerals, hornblende, that contributes  
208 substantially to the weathering rates, is shown in Figure 1, as an example of the variation in mineralogy  
209 over Sweden. PROFILE was applied with temperatures for the two time periods and the two climate model  
210 projections, according to the description above. Median weathering rates were finally calculated for each  
211 merged catchment.

212

213 Table 3. The most important input parameters in PROFILE, their ranges throughout Sweden and their data  
214 sources. The data sources are described in more detail in the text.

215

216 **Fig. 1** The fraction of hornblende in soils across Sweden, modelled with a normative model, based on a  
217 national soil geochemistry database (Akselsson et al. 2004).

218

219 2.4 Sensitivity analysis of effects of moisture changes on weathering rates

220 The potential effect of a change in moisture due to climate change was studied through a sensitivity  
221 analysis using model-predicted changes in soil moisture ranges over Sweden for the mid-century projection  
222 period. Projected changes from the S-HYPE model were used. S-HYPE is a Sweden-wide model set-up of  
223 the HYPE model (Hydrological Predictions for the Environment), a conceptual rainfall-runoff and nutrient-  
224 transfer model (Strömqvist et al. 2012). In S-HYPE, Sweden is divided into 37000 sub-basins, and rainfall-  
225 runoff dynamics are computed for each of those. Soil storages are modelled as linear reservoirs. Projected  
226 maximum and minimum moisture changes in Sweden were calculated using both ECHAM and HADLEY  
227 forcing data sets. Root zone moisture changes were then computed as differences between long-term  
228 averages of baseline (1981-2010) and mid-century (2036-2065) periods for each of the sub-basins. These  
229 sub-basin change projections were then used to derive bracketing minimum and maximum moisture  
230 changes for the sensitivity analysis on weathering rates. Four new PROFILE runs were performed, with the  
231 maximum and minimum moisture change for ECHAM and HADLEY separately. The resulting ranges of  
232 weathering rates provide a sensitivity measure using the widest range of computed soil moisture changes in  
233 Sweden, implicitly accounting for the accumulated uncertainty of the impact model chain.

234

235 2.5 Base cation losses due to stem-only and whole-tree harvesting

236 Harvest losses due to stem-only harvesting and whole-tree harvesting were based on data on site fertility  
237 for 5412 spruce forest sites (sites with at least 70% spruce) in the Swedish National Forest Inventory  
238 (Hägglund 1985). The site fertility is a measure of the optimal growth in a stand ( $\text{m}^3$  stem wood per hectare  
239 per year), and the actual growth is generally lower than the optimal growth. The site fertility was therefore  
240 reduced by 20% in an effort to imitate real growth conditions, in accordance with earlier studies (Akselsson  
241 et al. 2008). The growth data were then interpolated using kriging in a 1 x 1 km grid using Gaussian  
242 Markov random fields (Lindgren et al. 2011, Rue et al. 2009), and the mean values were calculated for each

243 merged catchment, based on the kriging results. Volume growth was recalculated to give mass growth  
244 using a spruce stem density of 430 kg m<sup>-3</sup>.

245

246 Losses of base cations arising from stem-only harvesting were estimated by multiplying the volume growth  
247 by the base cation concentration in stems (Table 4), assuming that 100% of the stems was harvested. Losses  
248 of base cations arising from whole tree harvesting were estimated as the sum of base cation losses through  
249 the removal of stems and the losses through removal of branches and tops, and the needles accompanying  
250 the branches and tops. The amount of biomass removed through harvesting of branches and tops was  
251 estimated by combining data on stem biomass for the sites and generalised empirical data on fractions  
252 between the biomass of stems, branches, tops and needles, by the use of standard methods (Marklund  
253 1988). The estimated amount of branches, tops and needles removed was then multiplied by the base cation  
254 concentrations in branches, tops and needles (Table 4). The estimated total mass of branches, tops and  
255 needles was reduced according to the harvest percentages given above, to give the base cation losses  
256 resulting from the removal of branches, tops and needles.

257

258 Table 4. Concentrations of base cations in stems, branches, tops and needles used in the calculations.

259

### 260 3. Results

261 The two climate models, HADLEY and ECHAM, gave very similar results for temperature for the present  
262 climate, after bias correction, as expected, i.e. an average annual temperature over the whole of Sweden of  
263 4.3°C, with a span from about -5°C in the north to 9°C in the south. However, the temperatures projected  
264 by the two models for 2050 differed substantially, as can be seen in Figure 2 and Table 5. ECHAM  
265 projected an average annual soil temperature of 6.5°C, i.e. an increase of 2.2°C compared with today, while  
266 HADLEY projected an average temperature of 7.6°C, which is an increase of 3.3°C.

267

268 **Fig. 2** Temperatures predicted for the present time, (a) and (b), and for 2050 (c) and (d), by the ECHAM  
269 and the HADLEY model respectively

270

271 Table 5. Modelled annual average, maximum and minimum temperatures for the merged catchments for  
272 the present (1981-2010) and for 2050 (2036-2065), using ECHAM and HADLEY.

273

274 When using the temperature projected for 2050 by ECHAM, the base cation weathering rate increased by  
275 an average of 20%, and the increase when using the temperature projected by HADLEY was 33%. These  
276 results are presented in Figure 3 and Table 6. The change in weathering rate varied between the north and  
277 south of the country, and was similar to the regional variation in temperature change, i.e. the highest  
278 relative difference was seen in the northernmost part of the country (Figure 4).

279

280 **Fig. 3** Modelled total weathering rates of base cations based on present temperatures (a) and the predicted  
281 temperatures in 2050, according to ECHAM (b) and the HADLEY model (c). (The map for the present  
282 temperatures is based on the ECHAM results, but the HADLEY results were almost identical)

283

284 Table 6. Average weathering rates of Ca, Mg, K, Na and total base cations (Tot. BC) over all merged  
285 catchments for the present temperature and the temperatures predicted for 2050 by ECHAM and the  
286 HADLEY model. (ECHAM and HADLEY give the same average present temperatures when rounded to  
287 one decimal.)

288

289 **Fig. 4** Difference between the present temperature and the temperature in 2050 predicted by the HADLEY  
290 model (a), and the relative difference in base cation weathering rates between the two periods using the  
291 temperatures predicted by the HADLEY model (b)

292

293 The sensitivity analysis of effects of moisture changes showed that the median weathering rate in Sweden  
294 varied between 24 and 28 mEq m<sup>-2</sup> y<sup>-1</sup> if the lowest respective highest value in the moisture change interval  
295 was used in the ECHAM scenario, which means a percentage change of -11% to +4% compared to if no  
296 moisture change is assumed, as in the original runs (Table 7). The corresponding interval for HADLEY

297 was 24 and 33 mEq m<sup>-2</sup> y<sup>-1</sup> (-20% to +10 %). These results emphasize the importance of future moisture  
298 development for weathering rates and highlight the uncertainty in the projected changes. However, not  
299 even a maximum moisture reduction would fully counteract the increase of weathering rates due to  
300 increased temperature, which underlines the significance of the projected changes caused by increased  
301 temperatures.

302

303 Table 7. Median base cation weathering rates for Sweden with the temperature for today and for the  
304 temperature of 2050 with unchanged moisture, and with a maximum and minimum change of moisture  
305 according to the sensitivity analysis interval (ECHAM and HADLEY).

306

307 A clear north-south gradient was also seen in base cation losses due to harvesting, with substantially higher  
308 losses in the south than in the north (Figure 5), due to the higher site productivity and thus more biomass  
309 removal at harvesting in the south, where the climate is more favorable and the nitrogen availability is  
310 higher (Akselsson et al. 2005). Whole-tree harvesting was predicted to lead to on average 66% higher base  
311 cation losses than stem-only harvesting.

312

313 **Fig. 5** Base cation losses resulting from stem-only harvesting (a) and whole-tree harvesting (b) of spruce  
314 forest

315

316 Base cation weathering rates at present temperatures were higher than base cation losses resulting from  
317 stem-only harvesting in the northern half of Sweden, and in some parts of the southern half (Figure 6a).  
318 The areas with a positive base cation balance were substantially smaller following whole-tree harvesting,  
319 and were mainly restricted to an area in the north of the country (Figure 6b). Increased weathering due to  
320 an increase in temperature in combination with whole-tree harvesting increased the areas with positive base  
321 cation balances, and led to a less negative balance in the other areas, compared with the scenario at the  
322 present temperature and whole-tree harvesting (Figure 6c and d). The effect was most evident when the  
323 temperature projected by HADLEY was used (Figure 6d). Comparing the change in weathering rate from  
324 present conditions to 2050 with the change in base cation losses when whole-tree harvesting is applied

325 instead of stem harvesting, showed that the effect of whole-tree harvesting exceeded the effect of increased  
326 weathering due to the temperature increase in Sweden, except in the northernmost part of the country,  
327 where the effect was the opposite (Figure 7). The area in the north was more extensive when using the  
328 HADLEY projection (greater temperature increase) than when using ECHAM.

329

330 **Fig. 6** Difference between base cation weathering rate and loss of base cations in spruce forests  
331 resulting from stem-only harvesting using weathering rates based on present temperatures (a), whole-tree  
332 harvesting and weathering rates based on the present temperatures (b), whole-tree harvesting and  
333 weathering rates based on the average temperature in 2050 predicted by ECHAM (c), and whole-tree  
334 harvesting and weathering rates based on the average temperature in 2050 predicted by the HADLEY  
335 model (d). (Maps (a) and (b) are based on ECHAM results, but the HADLEY results were almost identical)

336

337 **Fig. 7** The increase of base cation weathering at a temperature increase minus the increase in base cation  
338 losses at whole-tree harvesting in spruce forests, using temperatures from ECHAM (a) and HADLEY (b).  
339 In the red and orange areas the effect of whole-tree harvesting exceeds the effect of increased weathering  
340 due to the temperature increase. In the green areas the effect of temperature on weathering exceeds the  
341 effect of whole-tree harvesting

342

#### 343 4. Discussion

344 The results of this study suggest that, although the projected increase in temperature will have a substantial  
345 effect on weathering rates, it will not be sufficient to counteract the increased loss of base cations resulting  
346 from whole-tree harvesting, compared with conventional stem-only harvesting, except in a small area in the  
347 northernmost part of the country. A steep gradient was seen from north to south, showing increasing  
348 dominance of the effect of whole-tree harvesting in the south, compared to the effect of the temperature  
349 increase on weathering rates. The main explanation is the substantially higher loss of base cations due to  
350 whole-tree harvesting towards the south, in accordance with the increasing site productivity in the more  
351 favourable climate and nitrogen conditions in the south. The change in weathering rates due to increased  
352 temperatures also affects the geographical pattern. The change in weathering rates depends on the projected

353 temperature change, the variation in present weathering rates (Figure 3a), which is closely linked to the  
354 mineralogy (Figure 1), and the temperature dependence for different minerals. The difference between  
355 temperature dependence for different minerals is relatively small (Table 2; Hodson et al. 1996). Thus the  
356 present weathering rates and the projected temperature change are the most important factors. The  
357 temperature change is predicted to be the highest in the northernmost parts (Figure 4a), and in this area the  
358 present weathering rates are relatively high according to the model results (Figure 3). Thus, a relatively  
359 large weathering increase in the north can be a contributing factor to the results showing that increased  
360 weathering can counteract for base cation losses at whole-tree harvesting in the north. Also the  
361 southwestern part of Sweden and the eastern part of central Sweden show relatively high weathering rates  
362 (Figure 3), which can be seen at the differences between base cation weathering and harvest losses, that are  
363 positive or only slightly negative in these areas, whereas the differences in the surrounding areas are more  
364 negative (Figure 6). The overall gradient is, however, determined by the geographical variation of the  
365 harvest loss parameter rather than the variation in the weathering parameter. The sensitivity analysis for  
366 moisture indicated that the climate change on soil moisture could either hamper or slightly reinforce the  
367 effect of temperature on weathering rates, but it would not substantially change the conclusions about  
368 temperature effects on weathering rates in relation to base cation losses from whole-tree harvesting.

369

370 The southern half of Sweden, where whole-tree harvesting dominates, is also the most acidified area of  
371 Sweden. This area has had the highest historical and present acidic deposition and a low ANC (acid  
372 neutralizing capacity), negative or close to 0, in soil water below the root zone (Pihl Karlsson et al. 2011).  
373 The loss of base cations in this region has previously been highly elevated due to ion exchange caused by  
374 acidic deposition (Akselsson et al. 2013). The results of the present study reinforce earlier conclusions that  
375 whole-tree harvesting in this part of the country may counteract recovery from acidification if the nutrient  
376 losses are not compensated for (Akselsson et al. 2007; Iwald et al. 2013). In the northern part, the increase  
377 in weathering rate due to the temperature increase counteracted base cation losses due to whole-tree  
378 harvesting. This region is not as greatly affected by acidic deposition, and the ANC in soil water is above 0  
379 in most soils. The risk of negative effects of whole-tree harvesting on acidification is thus much lower than  
380 in the south. However, taking the potential increase in growth rate due to climate change into account may



381 lead to other conclusions. Increased growth rates will increase base cation uptake and possibly lead to  
382 shorter rotations periods and thus more frequent harvesting events, removing more base cations from the  
383 system.

384

385 The results are in line with results presented by Aherne et al. (2012), who used the MAGIC model (Cosby  
386 et al. 1985; Cosby et al. 2001) in combination with Arrhenius factors (Sverdrup and Warfvinge 1993) and  
387 relationships between temperature and respiration to model the effects of biomass removal on soil nutrient  
388 status as a result of climate change in catchments in Finland. They concluded that climate change would  
389 have a positive net effect on base cation supply, taking increased weathering rates due to increasing  
390 temperatures and increased uptake due to increased tree growth into account, but that the negative effect of  
391 whole-tree harvesting (including foliage) would be greater than the beneficial effects of climate change.

392 Reinds et al. (2009) used a dynamic model, VSD (Posch and Reinds 2009), to predict the recovery from  
393 soil acidification in forests in Europe as a result of climate change. Their results also showed positive,  
394 although small, effects on recovery, due to increased weathering rates. Campbell et al. (2009) used the  
395 PnET-BGC model (Gbondo-Tugbawa et al. 2001) to study the effects of climate change on the  
396 biogeochemistry of forest ecosystems in north-eastern North America, and found somewhat contradictory  
397 results. According to their study, tree growth and nitrate leaching would be increased, but weathering rates  
398 slightly decreased, due to a decrease in soil moisture. These results underline the importance of soil  
399 moisture in determining weathering rates. Depending on the size of the temperature change in relation to  
400 the size of the moisture change, the weathering rate could increase, as in the present study for Sweden, in  
401 Aherne et al. (2012) and in Reinds et al. (2009), or decrease, as suggested in Campbell et al. (2009) for  
402 North America.

403

404 In this study, two of the most important direct and indirect factors related to climate change that can affect  
405 recovery from acidification were compared, namely temperature effects on weathering rates and increased  
406 biomass harvesting to meet the demand of renewable fuel, but there are several other ways in which climate  
407 change could affect base cation balances and acidification. Thus, the results should only be used as an  
408 indication of the potential of a temperature-induced increase in weathering rates in counteracting base

409 cation losses due to whole-tree harvesting. According to Bergh et al. (2010), increased tree growth would  
410 increase the loss of base cations resulting from harvesting, leading to more negative balances. In areas with  
411 reduced growth due to drought, the effect would be the opposite. Weathering rates are not only affected by  
412 temperature, but also by moisture (Brady and Weil 1999) and tree growth. Tree growth influences  
413 weathering rates through its effect on the concentration of base cations in soil solution, which controls the  
414 product inhibition, i.e the reduction of weathering rates with increased concentration of weathering  
415 products (Sverdrup 1990). Increased moisture and increased tree growth will increase weathering rates and  
416 vice versa. A sensitivity analysis of the PROFILE model in an earlier study identified temperature and  
417 moisture as two of the most important parameters determining weathering rates, whereas base cation load  
418 was of less importance (Hodson et al. 1996). Thus, changed uptake of base cations due to changed tree  
419 growth is of less importance according to the PROFILE model description. The sensitivity analysis in the  
420 present study indicated that the effect of temperature is greater than the effect of moisture, with the  
421 predicted changes of temperature and precipitation in Sweden. Decomposition is also highly temperature-  
422 dependent (Berg and McClaugherty 2003), and can be expected to increase in the future. Decomposition  
423 could, however, decrease in areas of drought. Enhanced decomposition may increase the short-term supply  
424 of base cations, hampering weathering rates. At the same time, nitrification leading to increased hydrogen  
425 ion concentrations, and the release of DOC, accelerates weathering rates. To give a more holistic picture of  
426 the effect of climate change on weathering rates, dynamic modelling approaches are required, e.g. with the  
427 ForSAFE model (Wallman et al. 2005; Belyazid et al.2006), where weathering, tree growth and  
428 decomposition is modelled dynamically, with feed-backs in between.

429

430 Base cation deposition is of the same order of magnitude as base cation weathering (Akselsson et al. 2007),  
431 and changes in deposition are thus as important as changes in weathering rates with regard to the recovery  
432 progress. Measurements have shown a decrease in base cation deposition together with the decrease in  
433 sulphur deposition (Hedin et al. 1994). Base cation deposition in the future may be affected by various  
434 factors related to climate change, such as increased biomass burning for energy production and changes in  
435 deposition patterns. The net effect is, however, difficult to predict.

436

437 The modelled temperatures and weathering rates, and the harvesting estimates are associated with  
438 uncertainties. The use of average air temperatures instead of soil temperatures may affect the absolute  
439 weathering rates. According to Zheng et al. (1993) there is a very strong correlation between yearly average  
440 soil temperature at 10 cm depth and air temperature, but the soil temperature is on average 2 degrees higher  
441 than the air temperature. Thus, using air temperature would lead to an underestimation of weathering rates,  
442 but the effect on the difference between the two periods studied here can be expected to be minor.

443 Concerning the two temperature projections used, they represent the upper and lower range of the spectrum  
444 of future temperature changes in a large ensemble of projections (e.g. Kjellström et al. 2011). Thus the  
445 most probable change is somewhere between these two projections, although changes outside the range  
446 cannot be excluded. The uncertainties in temperature affect the numerical results, as can be seen by  
447 comparing the results from the HADLEY and the ECHAM projection, but they do not change the overall  
448 conclusions.

449

450 PROFILE is one of the most commonly used methods for estimating weathering rates, and thus  
451 uncertainties in the model have been investigated in numerous studies. Weathering rates estimated with  
452 PROFILE have been compared with those given by different approaches at the same sites. Sverdrup and  
453 Warfvinge (1993) compared results from different approaches at 15 sites in Europe and North America,  
454 and concluded that the estimates of weathering rates provided by PROFILE are within about  $\pm 20\%$  of the  
455 rates determined by the other, independent, methods. Sverdrup et al. (1998) compared weathering rates  
456 from six different approaches, including PROFILE, in Gårdsjön in south-western Sweden, and found the  
457 results to be consistent with each other, with only relatively small variations. Koseva et al. (2010)  
458 compared the results from catchment mass balance calculations at 19 sites in Canada with PROFILE  
459 results. The results from the mass balance calculations were, in most cases, somewhat higher than the  
460 PROFILE results, as expected, since the catchment approach includes a thicker soil horizon. They  
461 concluded that PROFILE provides reasonable estimates of weathering rates. Klaminder et al. (2011)  
462 compiled weathering rates for Ca and K obtained using different approaches at Svartberget in northern  
463 Sweden, and found somewhat contradictory results, with very wide weathering rate intervals. However,

464 they compared weathering estimates valid for different soil compartments (from 0.2 m depth to the whole  
465 soil compartment within a catchment), and site-level assessments were used together with regional  
466 estimates. Harmonization of the assumptions and delimitations in the different approaches, e.g. the use of  
467 the same soil depth, would narrow the span, which is discussed further in Futter et al. (2012). Jönsson et al.  
468 (1995) performed a sensitivity analysis in which they estimated the range in the uncertainty of input  
469 parameters to be 10-100%, and concluded that these uncertainties would lead to a variation in the results of  
470  $\pm 40\%$ . Furthermore, they identified the physical parameters of soil, such as moisture content, bulk density  
471 and exposed mineral surface, to be the input parameters with the greatest influence on the output, which is  
472 in line with the results from uncertainty analyses performed by Hodson et al. (1996) and Zak et al. (1997).  
473 In the regional calculations in the present study, a certain degree of generalization of the input data for the  
474 sites was required (Akselsson et al. 2004), and the uncertainties can thus be expected to be towards the  
475 higher values, or even higher than the intervals intended for single well-investigated sites. However, the use  
476 of median values for merged catchments reduces the uncertainties compared to the uncertainties for  
477 specific sites, since the variability at specific sites within a single catchment, regarding e.g. soil depth and  
478 texture, may cancel out.

479

480 The uncertainties in the estimates of base cation losses as a result of harvesting are mainly associated with  
481 the estimated net stem growth, the amount of branches and needles collected, and the concentrations of  
482 base cations in different parts of the tree. Hellsten et al. (2008) performed a sensitivity analysis based on  
483 the measured variation in base cation concentrations in different parts of the tree, and demonstrated that  
484 particularly the variation Ca concentrations contributed to the uncertainties in the results of mass balance  
485 calculations. The different concentrations changed the size of the net losses, but did not lead to completely  
486 different conclusions being drawn. The amount of branches and needles harvested is of considerable  
487 importance for the final results, and although the assumptions were intended to reflect real conditions, the  
488 amount of branches harvested, as well as the amount of needles accompanying the branches, varies  
489 considerably, depending on natural and practical factors.

490

491 Although all the terms in the calculations are associated with uncertainties, the general pattern, with higher  
492 biomass harvesting and a greater effect of whole-tree harvesting in the south of the country, and higher  
493 weathering rates in response to temperature in the north, is well-founded. Although the boundary between  
494 areas where the effect of temperature on weathering exceeds the base cation loss is uncertain, the overall  
495 conclusion that harvest losses are highly dominant in the south, and of less importance towards the north, is  
496 reliable.

497

## 498 5. Conclusions

499 The effects of whole-tree harvesting and increased weathering rates on base cation cycling varied widely  
500 from the north to the south of Sweden. These results highlight the importance of studying climate change  
501 effects at different geographical locations.

502

503 The increase in weathering rates at higher temperatures could not compensate for the increase in base  
504 cation losses resulting from whole-tree harvesting, except in the northernmost part of the country. Thus,  
505 the results indicate that whole-tree harvesting is not sustainable, unless nutrient compensation is applied,  
506 even with the predicted higher weathering rates. The results strengthen existing recommendations of  
507 nutrient compensation after whole-tree harvesting if the removal of branches and tops exceeds a specified  
508 amount.

509

510 Whereas the results in this study give an indication of the potential of the temperature-induced increase in  
511 weathering rates of base cations in counteracting losses due to whole-tree harvesting, as well as of the  
512 effect of changes in soil moisture, it does not give a holistic picture of the effect of climate change on  
513 weathering rates, since many other important processes are involved. Dynamic modelling approaches are  
514 therefore required to give a more holistic picture.

515

516

517

518

519 References

- 520 Aherne J, Posch M, Forsius M, Lehtonen A, Härkönen K (2012) Impacts of forest biomass removal on soil  
521 nutrient status under climate change: a catchment-based modelling study for Finland. *Biogeochemistry*  
522 107:471-488. doi: 10.1007/s10533-010-9569-4
- 523 Akselsson C, Holmqvist J, Alveteg M, Kurz D, Sverdrup H (2004) Scaling and mapping regional  
524 calculations of soil chemical weathering rates in Sweden. *Water Air Soil Poll: Focus* 4:671-681. doi:  
525 10.1023/B:WAFO.0000028386.89557.fa
- 526 Akselsson C, Westling O (2005) Regionalized nitrogen budgets in forest soils for different deposition and  
527 forestry scenarios in Sweden. *Global Ecol Biogeogr* 14:85-95. doi: 10.1111/j.1466-822X.2004.00137.x
- 528 Akselsson C, Westling O, Sverdrup H, Holmqvist J, Thelin G, Uggla E, Malm G (2007) Impact of harvest  
529 intensity on long-term base cation budgets in Swedish forest soils. *Water Air Soil Poll: Focus* 7:201-210.  
530 doi: 10.1007/s11267-006-9106-6
- 531 Akselsson C, Westling O, Alveteg M, Thelin G, Fransson A-M, Hellsten S (2008) The influence of N load  
532 and harvest intensity on the risk of P limitation in Swedish forest soils. *Sci Total Environ* 404:284-289. doi:  
533 10.1016/j.scitotenv.2007.11.017
- 534 Akselsson C, Hultberg H, Karlsson PE, Pihl Karlsson G, Hellsten S (2013) Acidification trends in south  
535 Swedish forest soils 1986-2008 - slow recovery and high sensitivity to sea-salt episodes. *Sci Total Environ*  
536 444:271-287. doi: 10.1016/j.scitotenv.2012.11.106
- 537 Belyazid S, Westling O, Sverdrup H (2006) Modelling changes in forest soil chemistry at 16 Swedish  
538 coniferous forest sites following deposition reduction. *Environ Pollut* 144:596-609.  
539 doi: 10.1016/j.envpol.2006.01.018
- 540 Berg B, McLaugherty C (2003) *Plant Litter: Decomposition, Humus Formation, Carbon Sequestration -*  
541 *Second Edition*. Springer-Verlag, Berlin Heidelberg
- 542 Bergh J, Nilsson U, Kjartansson B, Karlsson M (2010) Impact of climate change on the productivity of  
543 silver birch, Norway spruce and Scots pine stands in Sweden and economic implications for timber  
544 production. *Ecol Bull* 53:185-195
- 545 Brady NC, Weil RR (1999) *The Nature and Properties of Soils - 12th ed*. Prentice Hall Inc, New Jersey

546 Brandt M, Ejhed H, Rapp L (2008) Näringsbelastning på Östersjön och Västerhavet 2006 - Underlag till  
547 Sveriges PLC5-redovisning till HELCOM. Swedish Environmental Protection Agency Report 5815,  
548 Stockholm (In Swedish with English summary)

549 Brandtberg PO, Olsson B (2012) Changes in the effects of whole-tree harvesting on soil chemistry during  
550 10 years of stand development. *Forest Ecol Manag* 277:150-162. doi: 10.1016/j.foreco.2012.04.019

551 Brantley S (2008) Kinetics of mineral dissolution. In: Brantley S, Kubicki J, White A (eds) *Kinetics of*  
552 *water-rock interaction*. Springer-Verlag, New York, pp 151-210

553 Campbell J, Rustad L, Boyer E, Christopher S, Driscoll C, Fernandez I, Groffman P, Houle D, Kieckbusch  
554 J, Magill A, Mitchell M, Ollinger S (2009). Consequences of climate change for biogeochemical cycling in  
555 forests of northeastern North America. *Can J Forest Res* 39:264-284. doi: 10.1139/X08-104

556 Cosby BJ, Hornberger GM, Galloway JN, Wright RF (1985). Modeling the effects of acid deposition:  
557 assessment of a lumped parameter model of soil water and streamwater chemistry. *Water Resour Res*  
558 21:51-63. Doi: 10.1029/WR021i001p00051

559 Cosby BJ, Ferrier RC, Jenkins A, Wright RF (2001) Modelling the effects of acid deposition: refinements,  
560 adjustments and inclusion of nitrogen dynamics in the MAGIC model. *Hydrol Earth Syst Sc* 5:499-517.  
561 doi:10.5194/hess-5-499-2001

562 Egnell G, Nohrstedt HÖ, Weslien J, Westling O, Örlander G (1998) Miljökonsekvensbeskrivning av  
563 skogsbränsleuttag, asktillförsel och övrig näringskompensation. National Forest Agency Report 1:1998,  
564 Jönköping (In Swedish)

565 Ehret U, Zehe E, Wulfmeyer V, Warrach-Sagi K, Liebert J (2012) Should we apply bias correction to  
566 global and regional climate model data? *Hydrol Earth Syst Sc* 16:3391-3404. doi: 10.5194/hess-16-3391-  
567 2012

568 Evans CD, Cullen JM, Alewell C, Kopáček J, Marchetto A, Moldan F, Prechtel A, Rogora M, Veselý J,  
569 Wright R (2001) Recovery from acidification in European surface waters. *Hydrol Earth Syst Sc* 5(3):283-  
570 297. doi:10.5194/hess-5-283-2001

571 Futter MN, Klaminder J, Lucas RW, Laudon H, Köhler SJ (2012) Uncertainty in silicate mineral  
572 weathering rate estimates: source partitioning and policy implications. *Environ Res Lett* 7:1-8. doi:  
573 10.1088/1748-9326/7/2/024025

574 Fölster J, Wilander A (2002) Recovery from acidification in Swedish forest streams. *Environ Pollut*  
575 117:379-389. doi: 10.1016/S0269-7491(01)00201-9

576 Gbondo-Tugbawa SS, Driscoll CT, Aber JD, Likens GE (2001) Validation of a new integrated  
577 biogeochemical model (PnET-BGC) at a northern hardwood forest ecosystem. *Water Resour Res* 37:1057-  
578 1070. doi: 10.1029/2000WR900375

579 Graf Pannatier E, Thimonier A, Schmitt M, Walthert L, Waldner P (2011) A decade of monitoring at Swiss  
580 long-term forest ecosystem research (LWF) sites: can we observe trends in atmospheric acid deposition and  
581 in soil solution acidity? *Environ monit assess* 174:3-30. doi: 0.1007/s10661-010-1754-3

582 Hägglund B (1985) A new Swedish National Forest Survey. Swedish University of Agricultural Sciences  
583 Report 37, Uppsala (In Swedish with English summary)

584 Hedin L, Granat L, Likens G, Buishand A, Galloway J, Butler T, Rodhe H (1994) Steep declines in  
585 atmospheric base cations in regions of Europe and North America. *Nature* 367:351-354. doi:  
586 10.1038/367351a0

587 Hellsten S, Akselsson C, Olsson B, Belyazid S, Zetterberg T (2008) Effekter av skogsbränsleuttag på  
588 markförsurning, näringsbalanser och tillväxt – Uppskalning baserat på experimentella data och  
589 modellberäkningar som grund för kartläggning av behov av askåterföring. IVL Swedish Environmental  
590 Research Institute Report B1798, Stockholm (In Swedish with English summary)

591 Hindar A, Henriksen A, Kaste Ø, Tørseth K (1995) Extreme acidification in small catchments in  
592 southwestern Norway associated with a sea salt episode. *Water Air Soil Poll* 85:547-552. doi:  
593 10.1007/BF00476886

594 Hodson ME, Langan SJ, Wilson MJ (1996) A sensitivity analysis of the PROFILE model in relation to the  
595 calculation of soil weathering rates. *Appl Geochem* 11:835-844. doi: 10.1016/S0883-2927(96)00048-0

596 Hultberg H, Ferm M (2004) Temporal changes and fluxes of sulphur and calcium in wet and dry  
597 deposition, internal circulation as well as in run-off and soil in a forest at Gårdsjön, Sweden.  
598 *Biogeochemistry* 68:355-363

599 Iwald J, Löfgren S, Stendahl J, Karlton E (2013) Acidifying effect of removal of tree stumps and logging  
600 residues as compared to atmospheric deposition. *For Ecol Manag* 290:49-58. doi:  
601 10.1016/j.foreco.2012.06.022



602 Johns TC, Gregory JM, Ingram WJ, Johnson CE, Jones A, Lowe JA, Mitchell JFB, Roberts DL, Sexton  
603 DMH, Stevenson DS, Tett SFB, Woodage MJ (2003) Anthropogenic climate change for 1860 to 2100  
604 simulated with the HadCM3 model under updated emissions scenarios. *Clim Dynam* 20:583-612. doi:  
605 10.1007/s00382-002-0296-y

606 Jönsson C, Warfvinge P, Sverdrup H (1995) Uncertainty in predicting weathering rates and environmental  
607 stress factors with the profile model. *Water Air Soil Poll* 81:1-23. doi: 10.1007/BF00477253

608 Kellomäki S, Peltola H, Nuutinen T, Korhonen K, Strandman H (2007) Sensitivity of managed boreal  
609 forests in Finland to climate change, with implications for adaptive management. *Philos T Roy Soc B* 363:  
610 2341-2351. doi: 10.1098/rstb.2007.2204

611 Kjellström E, Nikulin G, Hansson U, Strandberg G, Ullerstig A (2011) 21st century changes in the  
612 European climate: uncertainties derived from an ensemble of regional climate model simulations. *Tellus*  
613 63A:24-40. doi: 10.1111/j.1600-0870.2010.00475.x

614 Klaminder J, Lucas RW, Futter MN, Bishop KH, Köhler SJ, Egnell G, Laudon H (2011) Silicate mineral  
615 weathering rate estimates: Are they precise enough to be useful when predicting the recovery of nutrient  
616 pools after harvesting? *Forest Ecol Manag* 261:1-9. doi: 10.1016/j.foreco.2010.09.040

617 Koseva I, Watmough S, Aherne J (2010) Estimating base cation weathering rates in Canadian forest soils  
618 using a simple texture-based model. *Biogeochemistry* 101:183-196. doi: 10.1007/s10533-010-9506-6

619 Langner J, Persson C, Robertson L, Ullerstig A (1996) Air pollution assessment study using the MATCH  
620 Modelling System. Application to sulphur and nitrogen compounds over Sweden 1994. Swedish  
621 Meteorological and Hydrological Institute, Report no. 69, Norrköping

622 Laudon H (2008) Recovery from episodic acidification delayed by drought and high sea salt deposition.  
623 *Hydrol Earth Syst Sc* 12:363-370. doi:10.5194/hess-12-363-2008

624 Lind P, Kjellström E (2008) Temperature and precipitation changes in Sweden; a wide range of model-  
625 based projections for the 21<sup>st</sup> century, Swedish Meteorological and Hydrological Institute Reports  
626 Meteorology Climatology No. 113, Norrköping

627 Lindgren F, Rue H, Lindström J (2011) An explicit link between Gaussian fields and Gaussian Markov  
628 random fields: the stochastic partial differential equation approach. *J Roy Stat Soc B* 73:423-498. doi:  
629 10.1111/j.1467-9868.2011.00777.x

630 Marklund L-G (1988) Biomass functions for pine, spruce, and birch in Sweden. Department of Forest  
631 Taxation, Swedish University of Agricultural Sciences (SLU) Report 45, Uppsala (In Swedish with English  
632 summary)

633 Nakićenović N, Alcamo J, Davis G, de Vries B, Fenhann J, Gaffin S, Gregory K, Grübler A (2000) Special  
634 Report on Emissions Scenarios, Working Group III, Intergovernmental Panel on Climate Change (IPCC).  
635 Cambridge University Press, Cambridge

636 Netherer S, Schopf A (2010) Potential effects of climate change on insect herbivores in European forests –  
637 General aspects and the pine processionary moth as specific example. *Forest Ecol Manag* 259:831-838. doi:  
638 10.1016/j.foreco.2009.07.034

639 Nyiri A, Gauss M, Klein H. (2009) Transboundary Air Pollution by Main Pollutants (S, N, O<sub>3</sub>) and PM.  
640 MSC-W Data Note 1:2009

641 Pihl Karlsson G, Akselsson C, Hellsten S, Karlsson PE (2011) Reduced European emissions of S and N –  
642 Effects on air concentrations, deposition and soil water chemistry in Swedish forests. *Environ Pollut*  
643 159:3571-3582. doi: 10.1016/j.envpol.2011.08.007

644 Posch M, Reinds GJ (2009) A very simple dynamic soil acidification model for scenario analyses and  
645 target load calculations. *Environ Model Softw* 24:329-40. doi: 10.1016/j.envsoft.2008.09.007

646 Reinds GJ, Posch M, Leemans R (2009) Modelling recovery from soil acidification in European forests  
647 under climate change. *Sci Tot Environ* 407:5663-5673. doi: 10.1016/j.scitotenv.2009.07.013

648 Roeckner E, Bäuml G, Bonaventura L, Brokopf R, Esch M, Giorgetta M, Hagemann S, Kirchner I,  
649 Kornbluh L, Manzini E, Rhodin A, Schlese U, Schulzweida U, Tompkins A (2003) The atmospheric  
650 general circulation model ECHAM5. PART I: Model description. Technical Report, Max Planck Institute  
651 for Meteorology, MPI-Report 349

652 Rue H, Martino S, Chopin N (2009) Approximate Bayesian Inference for Latent Gaussian Models Using  
653 Integrated Nested Laplace Approximations (with discussion). *J Roy Stat Soc B* 71:319-392

654 Samuelsson P, Jones CG, Willén U, Ullerstig A, Gollvik S, Hansson U, Jansson C, Kjellström E, Nikulin  
655 G, Wyser K (2011) The Rossby Centre Regional Climate model RCA3: Model description and  
656 performance. *Tellus A* 63:4-23. doi: 10.1111/j.1600-0870.2010.00478.x

657 Skjelkvåle B, Mannio J, Wilander A, Andersen T (2001) Recovery from acidification of lakes in Finland,  
658 Norway and Sweden 1990-1999. *Hydrol Earth Syst Sc* 5(3):327-337. doi:10.5194/hess-5-327-2001

659 Skjelkvåle B, Borg H, Hindar A, Wilander A. (2007) Large scale patterns of chemical recovery in lakes in  
660 Norway and Sweden: Importance of seasalt episodes and changes in dissolved organic carbon. *Appl*  
661 *Geochem* 22:1174-1180. doi: 10.1016/j.apgeochem.2007.03.040

662 STFI (2003) Ecocyclic pulp mill – ‘KAM’: Final report 1996–2002. Swedish Pulp and Paper Research  
663 Institute (STFI), KAM Report A100, Stockholm

664 Strömqvist J, Arheimer B, Dahné J, Donnelly C, Lindstrom G (2012) Water and nutrient predictions in  
665 ungauged basins: set-up and evaluation of a model at the national scale. *Hydrol Sci J* 57(2):229–247.  
666 doi:10.1080/02626667.2011.637497

667 Sverdrup H (1990) The kinetics of base cation release due to chemical weathering. Lund University Press,  
668 Lund

669 Sverdrup H, Warfvinge P (1993) Calculating field weathering rates using a mechanistic geochemical model  
670 (PROFILE). *Appl Geochem* 8:273-83. doi: 10.1016/0883-2927(93)90042-F

671 Sverdrup H, Martinson L, Alveteg M, Moldan F, Kronnäs V, Munthe J (2005) Modeling recovery of  
672 Swedish Ecosystems from Acidification. *Ambio* 34(1):25-31

673 Sverdrup H, Warfvinge P, Wickman, T (1998) Estimating the weathering rate at Gårdsjön using different  
674 methods. In: Hultberg H, Skeffington R (eds) *Experimental reversal of acid rain effects; The Gårdsjön*  
675 *project*. John Wiley Science, London, pp 231-149

676 Swedish Forest Agency (2008) Skogliga konsekvensanalyser 2008 – SKA-VB 08. Swedish Forest Agency  
677 Report 25, Jönköping (In Swedish)

678 Swedish Forest Agency (2014) Swedish Statistical Yearbook of Forestry 2014. Swedish Forest Agency,  
679 Jönköping (In Swedish with some features in English)

680 van Breemen N, Jenkins A, Wright RF, Beerling DJ, Arp WJ, Berendse F, Beier C, Collins R, van Dam D,  
681 Rasmussen L, Verburg PSJ, Wills MA (1998) Impacts of Elevated Carbon Dioxide and Temperature on a  
682 Boreal Forest Ecosystem (CLIMEX Project). *Ecosystems* 1:345-351

683 Wallman P, Svensson M, Sverdrup H, Belyazid S, 2005. ForSAFE - an integrated process-oriented forest  
684 model for long-term sustainability assessments. *Forest Ecol Manag* 207:19-36.  
685 doi: 10.1016/j.foreco.2004.10.016

686 Warfvinge P, Sverdrup S (1995) Critical load of acidity to Swedish forest soils. Methods, data and results.  
687 Lund University, Department of Chemical Engineering II Report 5:1995.

688 Wright R, Jenkins A (2001) Climate change as a confounding factor in reversibility of acidification: RAIN  
689 and CLIMEX projects. *Hydrol Earth Syst Sc* 5(3):477-486. doi: 10.5194/hess-5-477-2001

690 Yang W, Andréasson J, Graham LP, Olsson J, Rosberg J, Wetterhall F (2010) Distribution-based scaling to  
691 improve usability of regional climate model projections for hydrological climate change impact studies.  
692 *Hydrol Res* 41:211-229. doi: 10.2166/nh.2010.004

693 Zak SK, Beven K, Reynolds B. (1997) Uncertainty in the estimation of critical loads: A practical  
694 methodology. *Water Air Soil Poll* 98:297-316

695 Zetterberg T, Olsson BA, Löfgren S, von Brömssen C, Brandtberg PO (2013)  
696 The effect of harvest intensity on long-term calcium dynamics in soil and soil solution at three coniferous  
697 sites in Sweden. *Forest Ecol Manag* 302:280-294. doi: 10.1016/j.foreco.2013.03.030

698 Zheng D, Hunt ER, Running SW (1993) A daily soil temperature model based on air temperature and  
699 precipitation for continental applications. *Clim Res* 2:183-191

700

701 Tables

702

703 Table 1

---

Scenario	Description
<i>Temperature scenarios</i>	
Present temperature	HADLEY, Average 1981-2010
Present temperature	ECHAM, Average 1981-2010
Temperature in 2050	HADLEY, Average 2036-2065
Temperature in 2050	ECHAM, Average 2036-2065
<i>Harvesting scenarios</i>	
Stem-only harvesting	100% stems+bark
Whole-tree harvesting	100% stems+bark, 60% branches+tops

---

704

705

706 Table 2

Mineral	E <sub>A</sub> /R			
	k <sub>H</sub>	k <sub>H<sub>2</sub>O</sub>	k <sub>CO<sub>2</sub></sub>	k <sub>R</sub>
K-feldspar	3500	2000	1700	1200
Plagioclase	4200	2500	1700	1200
Hornblende	4300	3800	1700	2000
Pyroxene	2700	3800	1700	2000
Epidote	4350	3800	1700	2000
Apatite	3500	4000	1700	2200
Calcite	444	4000	2180	2200
Biotite	4500	3800	1700	2000
Muscovite	4500	3800	1700	2000
Illite	4500	3800	1700	2000
Chlorite	4500	3800	1700	2000
Vermiculite	4300	3800	1700	2000

707

708 Table 3

Parameter	Unit	Range	Source
Temperature	°C	-2.9 – 8.7	Modelled average 1981-2010, HADLEY and ECHAM
SO <sub>4</sub> -S deposition	mEq m <sup>-2</sup> y <sup>-1</sup>	6.3-55.4	MATCH model, average 2006-2008
NO <sub>3</sub> -N deposition	mEq m <sup>-2</sup> y <sup>-1</sup>	8.9-61.3	MATCH model, average 2006-2008
NH <sub>4</sub> -N deposition	mEq m <sup>-2</sup> y <sup>-1</sup>	3.8-38.6	MATCH model, average 2006-2008
Ca deposition	mEq m <sup>-2</sup> y <sup>-1</sup>	1.4-15.5	MATCH model, average 2006-2008
Mg deposition	mEq m <sup>-2</sup> y <sup>-1</sup>	1.3-32.4	MATCH model, average 2006-2008
K deposition	mEq m <sup>-2</sup> y <sup>-1</sup>	0.6-4.8	MATCH model, average 2006-2008
Na deposition	mEq m <sup>-2</sup> y <sup>-1</sup>	5.0-200.0	MATCH model, average 2006-2008
BC net uptake	mEq m <sup>-2</sup> y <sup>-1</sup>	2.2-73.4 <sup>a</sup>	Estimations based on data from NFI sites
N net uptake	mEq m <sup>-2</sup> y <sup>-1</sup>	2.0-62.6 <sup>a</sup>	Estimations based on data from NFI sites
Mineral surface area	m <sup>2</sup> m <sup>-3</sup>	150 000-6 500 000 <sup>b</sup>	Classification on NFI sites
Soil moisture	m <sup>3</sup> m <sup>-3</sup>	0.15-0.35	Classification on NFI sites
Density	kg m <sup>-3</sup>	1400 <sup>b</sup>	One value for all sites

*Minerals:*

K-feldspar	weight %	0-29 <sup>b</sup>	Estimated from national total chemistry databases
Plagioclase	weight %	1-45 <sup>b</sup>	Estimated from national total chemistry databases
Hornblende	weight %	0-32 <sup>b</sup>	Estimated from national total chemistry databases
Pyroxene	weight %	0-6 <sup>b</sup>	Estimated from national total chemistry databases
Epidote	weight %	0-9 <sup>b</sup>	Estimated from national total chemistry databases
Apatite	weight %	0-2 <sup>b</sup>	Estimated from national total chemistry databases
Calcite	weight %	0-46 <sup>b</sup>	Estimated from national total chemistry databases
Biotite	weight %	0-8 <sup>b</sup>	Estimated from national total chemistry databases
Muscovite	weight %	0-13 <sup>b</sup>	Estimated from national total chemistry databases
Illite	weight %	0-43 <sup>b</sup>	Estimated from national total chemistry databases
Chlorite	weight %	0-17 <sup>b</sup>	Estimated from national total chemistry databases
Vermiculite	weight %	0-20 <sup>b</sup>	Estimated from national total chemistry databases

709 <sup>a</sup> Net uptake of nitrogen (N) and base cations (BC) is defined as the N and BC lost at harvesting. The

710 ranges in the table apply to the stem harvesting scenario.

711 <sup>b</sup> The ranges given apply to the lowest of the soil layers in the profile.

712



713

Table 4

Element	Stem+bark	Branches+tops	Needles
Ca (mg g <sup>-1</sup> ) <sup>a</sup>	1.3	3.7	6.0
Mg (mg g <sup>-1</sup> ) <sup>a</sup>	0.18	0.62	1.0
K (mg g <sup>-1</sup> ) <sup>a</sup>	0.73	2.4	4.7
Na (mg g <sup>-1</sup> ) <sup>b</sup>	0.075	0.1	0.13

714

<sup>a</sup>Based on data compiled by Egnell et al. (1998).

715

<sup>b</sup>Based on data from STFI (2003).

716

717

718 Table 5

	Average (°C)	Minimum (°C)	Maximum (°C)
Present ECHAM	4.3	-4.7	8.7
Present HADLEY	4.3	-4.7	8.8
2050 ECHAM	6.5	-2.7	11.0
2050 HADLEY	7.6	-1.6	13.5

719

720

721 Table 6

	Weathering rate (mEq m <sup>-2</sup> y <sup>-1</sup> )		
	Present	Temperature 2050	Temperature 2050
	temperature	ECHAM	HADLEY
Ca	12.4	15.0 (+21%)	16.7 (+35%)
Mg	5.2	6.3 (+21%)	7.1 (+37%)
K	4.6	5.4 (+17%)	5.9 (+28%)
Na	11.1	13.1 (+18%)	14.4 (+30%)
Tot. BC	33.2	39.9 (+20%)	44.1 (+33%)

722

723

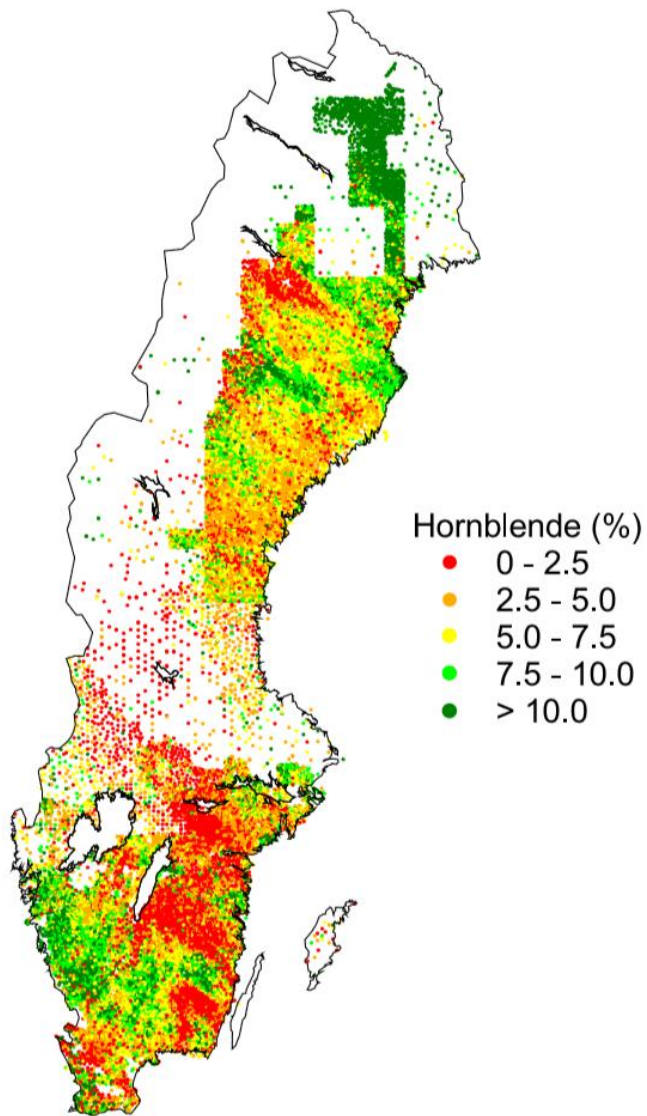
724 Table 7.

725

	Weathering rate (mEq m <sup>-2</sup> y <sup>-1</sup> )		Moisture change (%)		Weathering rate (mEq m <sup>-2</sup> y <sup>-1</sup> )	
	T present.	T 2050	Min	Max	T 2050, moist min	T 2050, moist max
ECHAM	22.4	27.1	-10.6	+3.9	24.0	28.2
HADLEY	22.4	29.8	-19.3	+9.2	23.7	32.8

726

727



729

730 Fig. 1

731

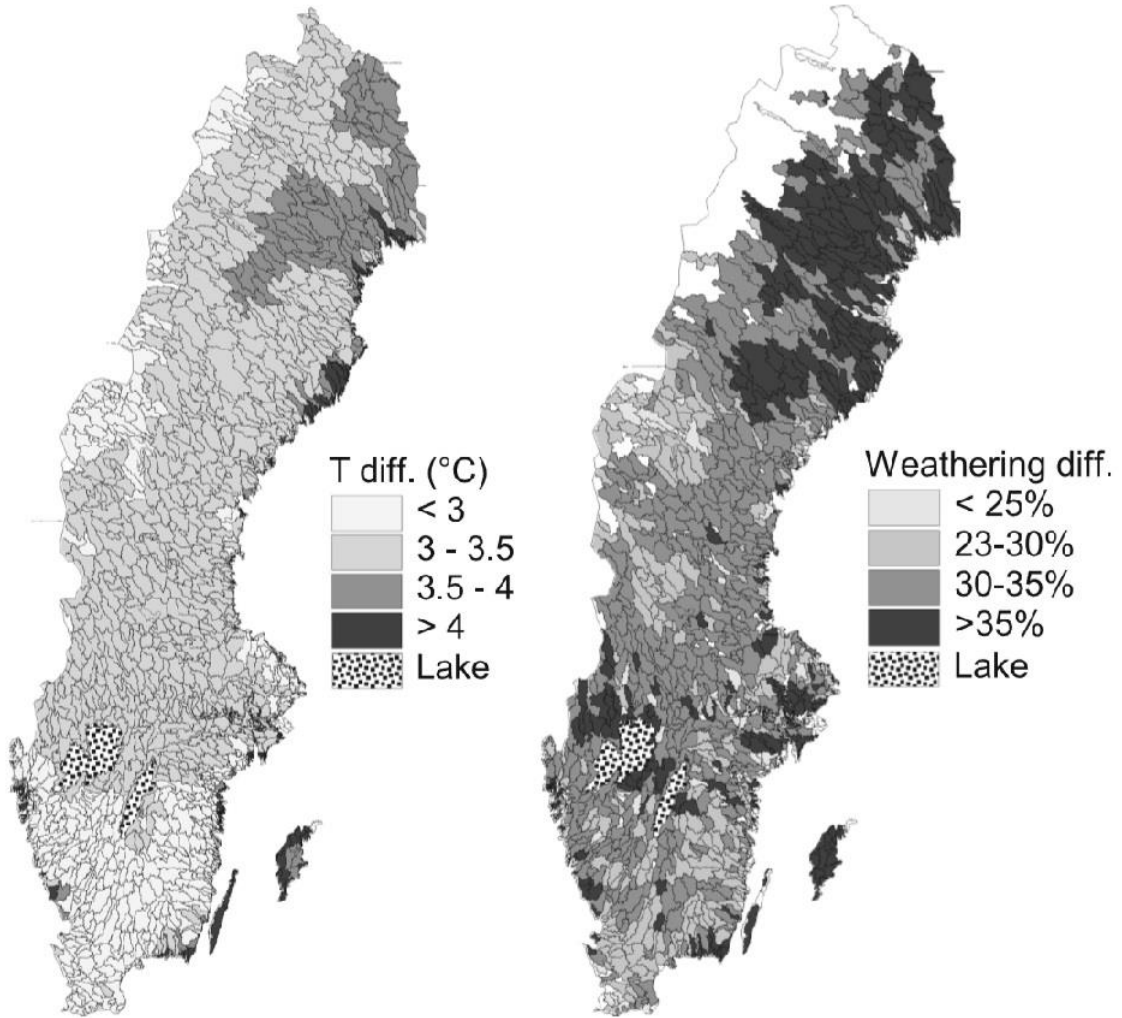


732  
733 Fig. 2  
734



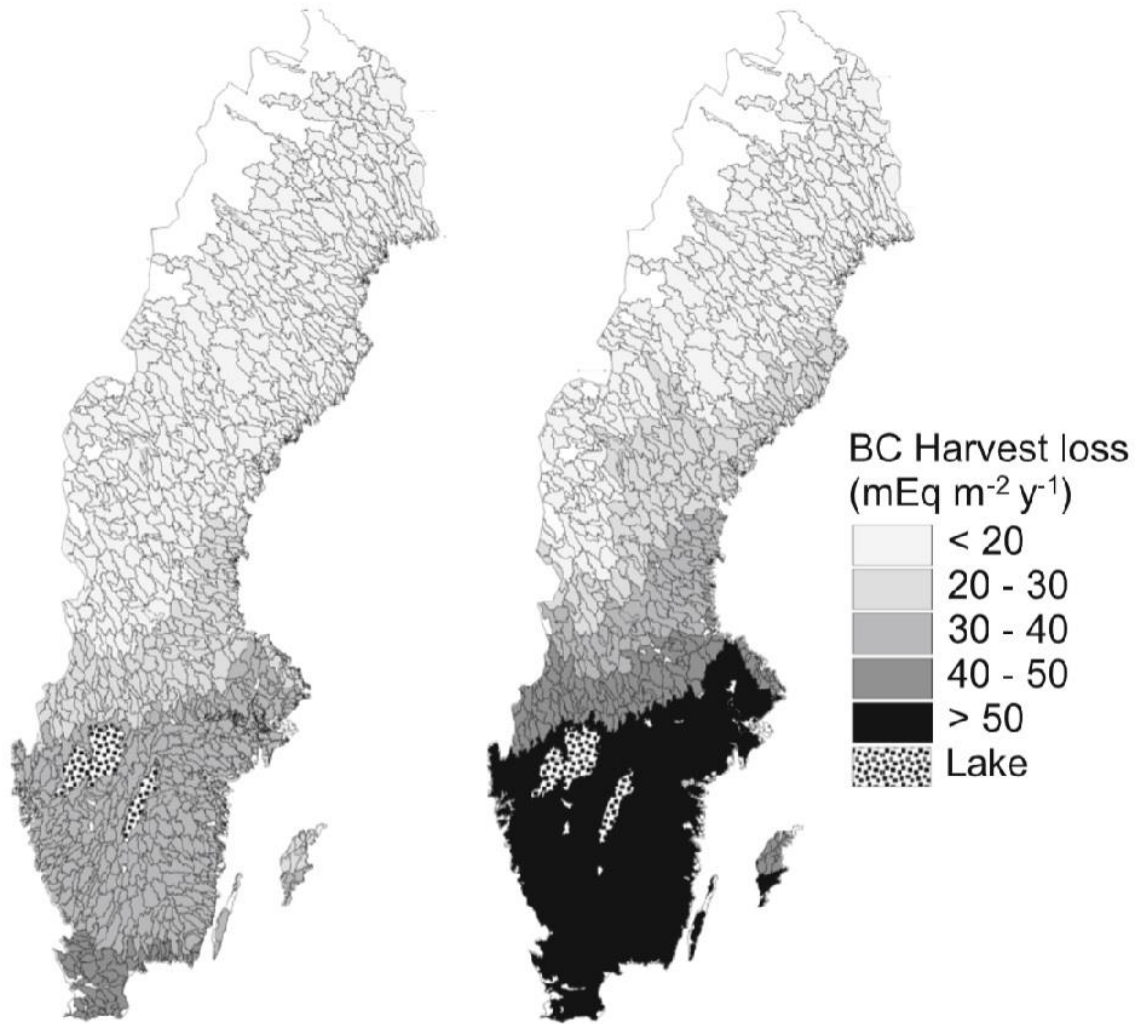
735  
736 Fig. 3

737

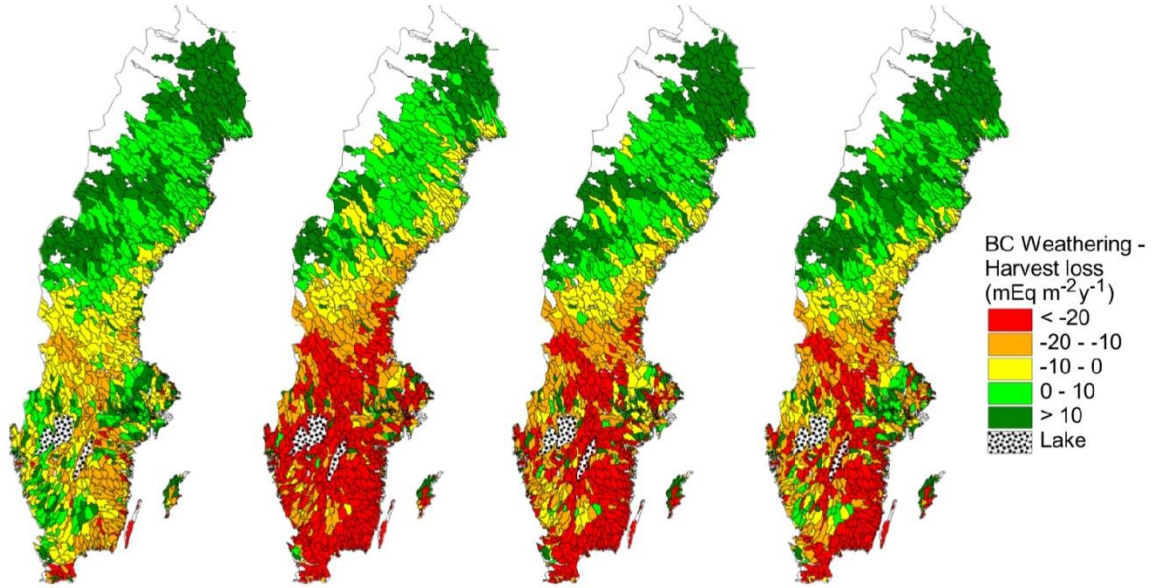


738  
 739 Fig. 4  
 740



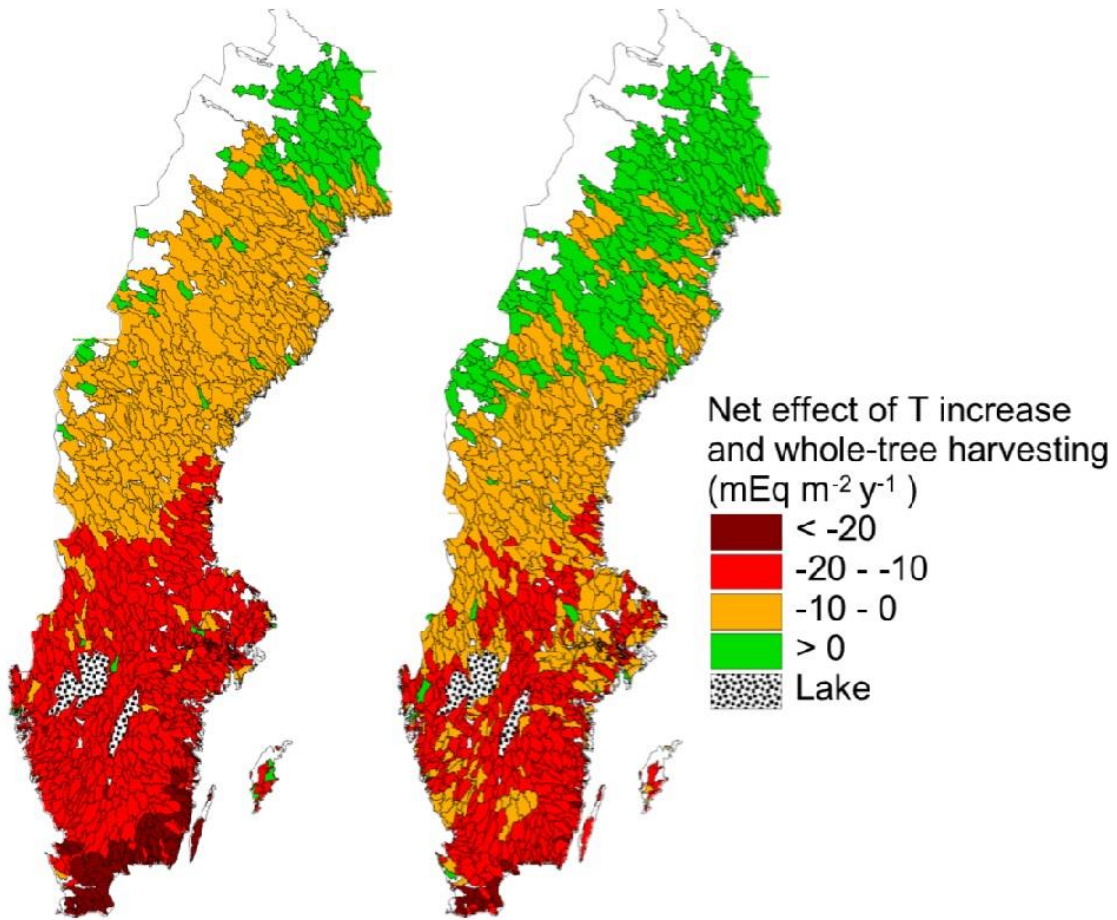


741  
742 Fig. 5  
743



744  
745 Fig. 6

746



747  
748 Fig. 7