



LUND UNIVERSITY

Critical biomass harvesting – Applying a new concept for Swedish forest soils

Akselsson, Cecilia; Belyazid, Salim

Published in:
Forest Ecology and Management

DOI:
[10.1016/j.foreco.2017.11.020](https://doi.org/10.1016/j.foreco.2017.11.020)

2018

[Link to publication](#)

Citation for published version (APA):
Akselsson, C., & Belyazid, S. (2018). Critical biomass harvesting – Applying a new concept for Swedish forest soils. *Forest Ecology and Management*, 409, 67-73. <https://doi.org/10.1016/j.foreco.2017.11.020>

Total number of authors:
2

General rights

Unless other specific re-use rights are stated the following general rights apply:
Copyright and moral rights for the publications made accessible in the public portal are retained by the authors and/or other copyright owners and it is a condition of accessing publications that users recognise and abide by the legal requirements associated with these rights.

- Users may download and print one copy of any publication from the public portal for the purpose of private study or research.
- You may not further distribute the material or use it for any profit-making activity or commercial gain
- You may freely distribute the URL identifying the publication in the public portal

Read more about Creative commons licenses: <https://creativecommons.org/licenses/>

Take down policy

If you believe that this document breaches copyright please contact us providing details, and we will remove access to the work immediately and investigate your claim.

LUND UNIVERSITY

PO Box 117
221 00 Lund
+46 46-222 00 00

1 Critical biomass harvesting – applying a new concept for Swedish
2 forest soils

3

4 Authors:

5 Akselsson, Cecilia (corresponding author)^a

6 Belyazid, Salim^b

7

8 ^aDepartment of Physical Geography and Ecosystem Science, Lund University,

9 Sölvegatan 12, SE-223 62 Lund, Sweden

10 Phone: +46 46 222 86 89

11 Fax: +46 46 222 03 21

12 E-mail: cecilia.akselsson@nateko.lu.se

13

14 ^bDepartment of Physical Geography , Stockholm University, Svante Arrhenius väg 8, SE-

15 106 91 Stockholm, Sweden

16

17

18 **Abstract**

19 The contribution of forest harvesting to base cation losses and soil acidification has
20 increased in recent years in Sweden, as the demand for bioenergy has increased and the
21 sulphur deposition has decreased. Thus, new policy tools are required to evaluate the
22 progress of the recovery from acidification, and as a basis for forest management
23 recommendations. In this study we introduce and test a concept, “Critical biomass
24 harvesting”. The concept builds on the concept “Critical loads”, which has been used
25 world-wide for several decades as a bridge between science and policies related to
26 transboundary air pollution and acidification. The basis for the concept is an acidity mass
27 balance, with sources and sinks of acidity. A critical limit defines the highest acceptable
28 acidification status of the water leaving the root zone. Based on the critical limit, the
29 highest allowed biomass harvesting can be calculated, keeping the other parameters
30 constant. In this study the critical limit was set to ANC (Acid Neutralizing Capacity) = 0.
31 Nitrogen was assumed to be affecting acidity only if it leaches from the root zone. The
32 critical biomass harvesting was calculated for almost 12 000 National Forest Inventory
33 sites with spruce and pine forest, using the best available data on deposition, weathering
34 and nitrogen leaching. The exceedance of critical biomass harvesting was calculated as
35 the difference between the estimated harvest losses and the critical biomass harvesting.
36 The results were presented as median values in merged catchments in a catchment
37 database, with totally 2079 merged catchments in Sweden. According to the calculations,
38 critical biomass harvesting was exceeded in the southern half of Sweden already at stem
39 harvesting in spruce forests. Whole-tree harvesting expanded the exceedance area, and
40 increased the exceedance levels in southern Sweden. The exceedance in pine forest was

lower and affected smaller areas. It was concluded that the concept of critical biomass harvesting can be successfully applied on the same database that has been used for critical load calculations in Sweden, using basically the same approach as has been extensively applied, evaluated and discussed in a critical load context. The results from the calculations in Sweden indicate that whole-tree harvesting, without wood ash recycling, can be expected to further slow down recovery, especially in the most acidified parts of the country, in the southwest.

Key words

whole-tree harvesting;acidification;base cations;Norway spruce;Scots pine;Sweden

Introduction

Emission reductions of sulphur have been successful in Europe (Nyiri et al., 2009) and recovery of soils and surface waters has started (Evans et al., 2001; Skjelkvåle et al., 2001; Fölster et al., 2002). However, the recovery is slow (Graf Pannatier et al., 2011; Pihl Karlsson et al., 2011; Akselsson et al., 2013; Futter et al., 2014) and problems with acidified soils and waters are predicted to remain for many decades (Sverdrup et al., 2005; Belyazid et al., 2006).

Whereas the importance of acidifying emissions for acidification has decreased, the acidification effect of forestry has increased, due to the increased demand of renewable energy (Iwald et al., 2013). The extent of harvesting of tops and branches has increased from 17% to 34% of final fellings between the years 2011 and 2015, whereas stump harvesting is still not common (Swedish Forest Agency, 2016). High concentrations of base cations in branches, tops and needles means substantially increased losses of base cations associated with whole-tree harvesting compared to stem harvesting (Akselsson et al., 2007; Palvainen et al., 2012; Riek et al., 2012; Lucas et al., 2014). Iwald et al. (2013) estimated the acidifying effect of whole-tree harvesting of spruce (branches, tops and stumps) to be 114–263% of that of acid deposition. The corresponding interval for pine was estimated to be 57–108%.

Effects of increased biomass harvesting on soil base cation status have also been found in experiments. Measurements in four long term experiments in Sweden showed that whole-tree harvesting led to smaller soil pools of exchangeable base cations compared to whole-tree harvesting (Brandtberg et al., 2012; Zetterberg et al., 2016). The effects were largest

for calcium, where the difference could be observed more than 25 years after the final felling. Achat et al. (2015) performed a meta-analysis on 168 experiments in Europe and North America, and found a significant decrease of base saturation in the upper 20 cm of the mineral soil after whole-tree harvesting as compared to stem harvesting. However, the effects varied between different experiments. Helmisaari et al. (2014) referred in a literature review to several whole-tree harvesting experiments in the Nordic countries, some of which showed negative effects on soil acidification indicators after whole-tree harvesting whereas others showed no significant effect.

The critical load of acidity was an important tool in adjusting policies to reduce emissions of sulphur and nitrogen oxides (Sundqvist et al., 2002). Critical loads of acidity are defined as “a quantitative estimate of an exposure to one or more pollutants below which significant harmful effects on specified elements of the environment do not occur according to present knowledge” (Nilsson et al., 1988). Calculations of critical loads of acidity are based on acidity mass balances, and can be modelled using the SMB model (Sverdrup et al., 1994) or PROFILE (Sverdrup et al., 1993).

As the deposition of acidifying substances has been reduced and the impact of forestry has increased, the need of a new policy tool, focusing on biomass harvesting, has emerged. The aims of this paper were to put forward a policy tool for sustainable biomass harvesting based on the critical load of acidity concept, “Critical biomass harvesting”, and to test it on the Swedish national critical load database.

100 **Materials and Methods**

101 *Concept and equations*

102 The calculations of Critical biomass harvesting were based on the same concept as the
 103 calculations of Critical load of acidity (Sverdrup et al., 1994). The SMB formula (Eq. 1,
 104 Posch et al., 1995) was used as a basis for the calculations, and was applied for the root
 105 zone, which was assumed to be 50 cm in depth.

106

$$107 \quad S_{\text{dep}} + N_{\text{dep}} + Cl_{\text{dep}} + BC_{\text{harv}} + Alk_{\text{leach}} = BC_{\text{dep}} + BC_{\text{weath}} + N_{\text{imm}} + N_{\text{harv}} + N_{\text{de}} \quad (\text{Eq. 1})$$

108

109 where dep = deposition ($\text{eq/m}^2, \text{yr}$)

110 BC = base cations (Ca, Mg, Na and K)

111 harv = net losses at harvesting

112 Alk_{leach} = Alkalinity leaching

113 weath = weathering

114 imm = immobilization

115 de = denitrification

116

117 The critical load of acidity is generally calculated according to Eq. 2, which is based on
 118 Eq. 1. The critical load is the highest deposition that still leads to acceptable runoff water
 119 quality, based on a chemical criterion and a critical limit, used to calculate the critical
 120 alkalinity leaching ($Alk_{\text{leach(crit)}}$ in Eq. 2). In Sweden, the criterion most often used has
 121 been the Bc:Al_i, (where Bc refers to the sum of Ca, Mg and K), a criterion associated

with tree health, and the critical limit has often been set to 1 (Sverdrup et al., 1994).

Exceedance is calculated according to Eq. 3.

$$CL (S_{dep}+N_{dep}) = BC_{dep}+BC_{weath}+N_{imm}+N_{harv}+N_{de}-Cl_{dep}-BC_{harv}-Alk_{leach(crit)} \quad (Eq. 2)$$

$$Exceedance = S_{dep}+N_{dep}-CL (S_{dep}+N_{dep}) \quad (Eq. 3)$$

For critical biomass harvesting, ANC in the runoff water was used as a chemical criterion, with a critical limit of 0. This means no acidification exported from the soils to the leaching water, but neither any acid neutralizing capacity. Setting the ANC limit to 0 was motivated by the assumption that the water gains some neutralizing capacity on the way from the 50 cm root zone through the mineral soil and to the surface water.

The nitrogen (N) calculations were greatly simplified. Almost all of the inorganic N deposition is taken up by vegetation and soil organisms in most Swedish forest soils, and the inorganic N concentrations in soil water below the root zone are thus very low, although in the southwesternmost part of Sweden highly elevated concentrations of inorganic N is common (Akselsson et al., 2010). In the clearcut phase, when the N uptake is interrupted, leaching of inorganic N from the root zone occurs, which has been shown on seven stem harvested sites in Sweden, on latitudes between 57° and 62° (Futter et al., 2010). The leaching is generally higher in the southwest (Akselsson et al., 2004), where

the N accumulation has been the highest (Akselsson et al., 2005). The acidifying effect of N was calculated based on following assumptions:

(1) The N that is leached from the soil as nitrate ($\text{NO}_3\text{-N}$) is acidifying, one equivalent (based on reasoning in Galloway, 1995).

(2) The N that is leached from the soil as $\text{NH}_4\text{-N}$ counteracts acidification, one equivalent (based on reasoning in Galloway, 1995).

(3) Whole-tree harvesting does not affect N leaching.

(4) N stored in soil organic matter will not acidify in the future.

Assumption 3 and 4 are rough assumptions required to simplify calculations, and have to be kept in mind when interpreting the results.

The equations for calculating critical biomass harvesting based on the reasoning above are given in Eq. 4-5.

$$\text{Crit BC}_{\text{harv}} = \text{BC}_{\text{weath}} + \text{BC}_{\text{dep}} + \text{NH}_4\text{-N}_{\text{leach}} - \text{S}_{\text{dep}} - \text{Cl}_{\text{dep}} - \text{NO}_3\text{-N}_{\text{leach}} \quad (\text{Eq. 4})$$

$$\text{Exceedance} = \text{BC}_{\text{harv}} - \text{Crit BC}_{\text{harv}} \quad (\text{Eq. 5})$$

National database for Sweden

Weathering rates, deposition, leaching and harvest losses were estimated on 5412 spruce sites (where Norway spruce makes up more than 70% of the forest stand) and 6361 pine sites (where Scots pine makes up more than 70% of the stand) within the Swedish National Forest Inventory (Hägglund, 1985). The critical harvest and the exceedance were then calculated according to Equations 4 and 5 respectively for all sites. The results were transferred to a national catchment database with 2079 merged catchments from the Swedish Environmental Emissions Data (SMED) Consortium; Brandt et al., 2008). This platform gives a better overview than the National Forest Inventory platform, but has high enough geographical resolution to account for the regional variation in e.g weathering rates and deposition. The platform is widely used in Swedish policy applications, which also makes it suitable. Spruce sites were present in 877 and pine sites in 959 of the merged catchments. Medians were calculated for spruce and pine for those merged catchments.

Deposition

Sulphur deposition (excluding sea salt) for the year 2020, as simulated by the 2011 EMEP model (www.emep.int) under the current legislation scenario of the latest revision of the Gothenburg protocol, was used. The deposition has been modelled in grid cells of 50 by 50 km, and each National Forest Inventory site was assigned the deposition from the corresponding grid cell. Sulphur deposition from sea salt was estimated based on sodium deposition (see below), based on the assumption that all Na comes from sea salt.

The 2020 data were used instead of today's deposition, since the critical harvest calculations are meant to be interpreted on a long-term (at least one forest rotation).

Base cation deposition (Ca, Mg, Na and K) was derived from the MATCH model (Langner et al., 1996), in the resolution 20*20 km. There are no clear trends in base cation deposition during the last decade, and the future deposition is very difficult to predict. In this study, the median deposition for 2007-2009 was used. Cl deposition was estimated based on Na deposition and the composition of sea salt, assuming that all Na and Cl deposition derives from sea salt.

Base cation losses at stem- and whole-tree harvesting

Harvest losses at stem only harvesting and whole-tree harvesting were based on data on site productivity on the sites. The site productivity gives the optimal growth of a stand (m^3 stem wood per hectare and year), and would therefore overestimate the actual growth. Thus the site productivity was reduced by 20% in an effort to imitate real conditions. Volume growth was recalculated to mass growth using the stem density of 430 kg m^{-3} for spruce and 490 kg m^{-3} for pine. Harvest losses for the stem harvesting scenario were then estimated by multiplying the volume growth by the base cation concentration in stems according to Table 1, assuming that 100% of the stems were harvested. In the whole-tree harvesting scenario, 100% of the stems were assumed to be removed together with 60% of the branches, in accordance with a scenario from Swedish Forest Agency (2008). Furthermore, 75% of the needles were assumed to accompany the branches. The amount of branches and needles available for harvesting was estimated

213 from stem data and fractions between biomass of stems, branches and needles from
 214 standard methods (Marklund, 1988). The available mass of branches and needles were
 215 reduced according to the removal percentages given above, to derive the loss of branches
 216 and needles from the forest sites. By multiplying the mass of branches and needles
 217 removed from the sites, by base cation concentrations in branches and needles
 218 respectively (Table 1), the loss off base cations from the sites was derived. The base
 219 cation concentrations were national average values (see table below), due to lack of site
 220 specific data. Zetterberg et al. (2014) performed a sensitivity analysis for Ca, and
 221 concluded that the lack of site specific nutrient concentration data was the main source of
 222 uncertainties in calculations of harvest losses of Ca, whereas uncertainties in site
 223 productivity and in the amount of branches left on the ground, contributed less to the
 224 overall uncertainties. However, in national calculations, using national averages of
 225 nutrient concentrations is the only option, since there are no available studies indicating
 226 that the concentration varies geographically, or that they can be linked to site conditions.
 227

Element	Spruce			Pine		
	Stem+	Branches+	Needles	Stem+	Branches+	Needles
	bark	tops		bark	tops	
Ca (mg g ⁻¹) ^a	1.3	3.7	6.0	0.9	2.3	3.3
Mg (mg g ⁻¹) ^a	0.2	0.6	1.0	0.2	0.4	0.8
K (mg g ⁻¹) ^a	0.7	2.4	4.7	0.5	1.5	5.1
Na (mg g ⁻¹) ^b	0.08	0.1	0.1	0.08	0.1	0.1

^aAverage concentrations compiled in Egnell et al. (1998), based on 22 spruce sites in Sweden, spanning over latitudes from 56 to 64, and 17 pine sites, spanning over latitudes from 56 to 66 (S. Jacobson, pers. comm).

^bData compiled in Anon. (2003).

Table 1. Concentrations in stems, branches and needles used in the calculations.

Weathering

Weathering rates were modelled with the PROFILE model, a soil chemistry model originally developed to calculate the effect of acid rain on soil chemistry (Sverdrup et al., 1993). It includes process oriented descriptions of chemical weathering of minerals, leaching and accumulation of dissolved chemical components and solution equilibrium reactions. PROFILE is a steady state model, which means that yearly data or long-term averages are required as input to the model, not time-series as in dynamic models. PROFILE then calculates the soil solution chemistry at steady state, i.e. the chemistry that finally settles using the constant input data. In PROFILE, the soil is divided into soil layers with different properties, preferably based on the naturally occurring soil stratification. Weathering is calculated using transition state theory. The geochemical properties of the soil system, such as soil wetness, mineral surface area, hydrogen, cation and organic acid concentrations, temperature and mineral composition, are important inputs.

Weathering rates were modelled on the National Forest Inventory sites, to a depth of 50 cm (including the organic layer) based on the same methodology and database as in

Akselsson et al. (2008), but with updated deposition data according to the description above.

Leaching of inorganic nitrogen from growing forests and clearcuts

The leaching of NO₃-N and NH₄-N from the root zone in growing forests was estimated using concentrations in soil water from the Swedish Throughfall Monitoring Network, SWETHRO (Pihl Karlsson et al., 2011) in combination with runoff data from the Swedish Meteorological and Hydrological Institute, SMHI (average 1961-1990; Raab et al., 1995). Median concentrations 2010-2012 (three measurements per year) on 60 sites were estimated, and a median of that was used for the whole country since the dataset did not support different concentrations in different parts of the country. Most farthest to the southwest there are several sites with elevated NO₃-concentrations (Akselsson et al., 2010), but there are also sites with low concentrations. By using a median for the whole country, the N leaching was probably underestimated in southwesternmost Sweden, but since there are no measurements of N leaching at the National Forest Inventory sites, the median from the SWETHRO network was still used.

The NO₃-N leaching from clearcuts was calculated based on an empirical relationship in Futter et al. (2010), where NO₃-N leaching is a function of site quality on seven sites in Sweden, covering site quality classes (defined as mean annual stemwood increment) of 3 to 11 m³ per hectare and year. Since site quality is available on all National Forest Inventory sites, the NO₃-N leaching could be estimated. To convert leaching to yearly

values, a rotation period of 85 years was assumed for southern Sweden, and 105 years for northern Sweden.

Results

The net losses of base cations were substantially higher in spruce forests than in pine forests (Figure 1; Table 2), due to more biomass in spruce forests. Harvesting of residues (branches and tops) led to 70% more losses in spruce forests whereas the corresponding increase in pine forests was 30%. There is a gradient in Sweden with higher base cation losses in the south than in the north, corresponding to the climate gradient. In the northern part there is a gradient with higher losses in the east than in the west.

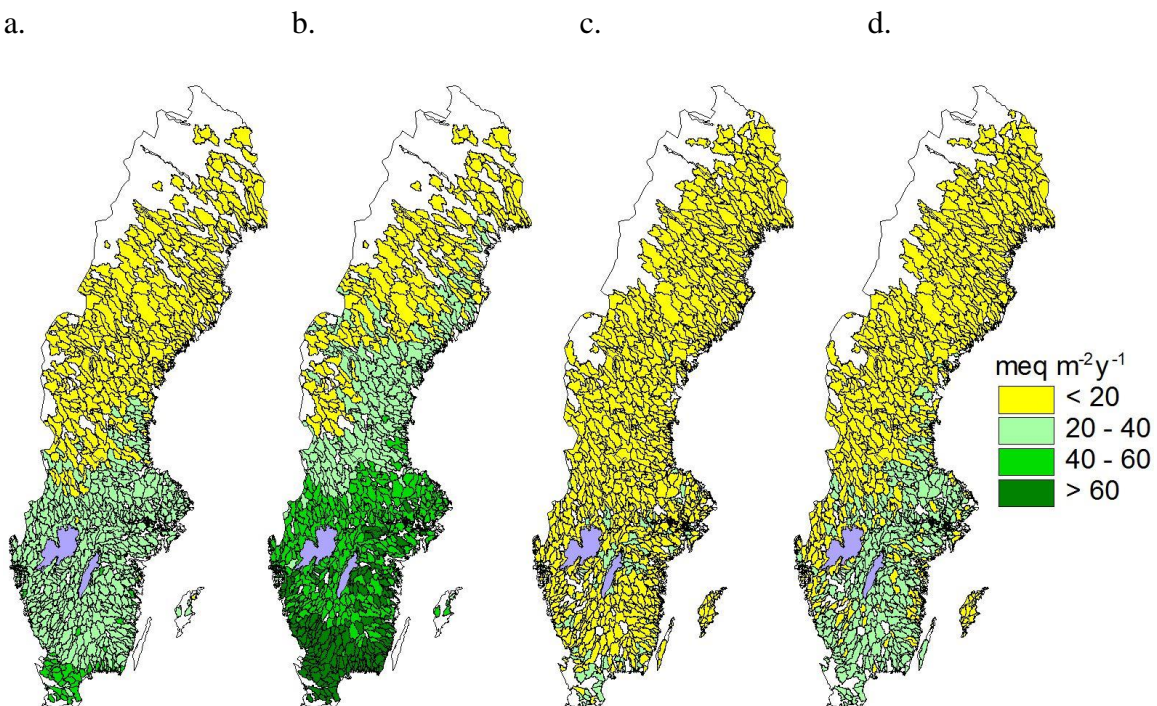


Figure 1. Losses of base cations (Ca, Mg, Na, K) at stem harvesting in spruce forests (a), whole-tree harvesting in spruce forests (b), stem harvesting in pine forests (c) and whole-tree harvesting in pine forests (d).

	Spruce			Pine		
	Median	5-perc.	95-perc	Median	5-perc.	95-perc
Harvest losses stem	26	8	42	13	6	21
Harvest losses wht	43	13	69	17	8	26
Critical harvesting	19	5	104	13	-1	48
Exceedance stem	3	-77	29	0	-35	16
Exceedance wht	19	-58	53	3	-30	20

Table 2. Harvest losses, critical harvesting and exceedance at stem-only and whole-tree harvesting in spruce and pine forest ($\text{meq m}^{-2} \text{ y}^{-1}$). Medians, 5- and 95-percentiles of the merged catchments.

The critical harvesting was the highest in southwestern Sweden, parts of northern Sweden and the western part of central Sweden (Figure 2). The critical harvesting was generally slightly lower for pine than for spruce, since pine forests are more frequently occurring on poorer soils.

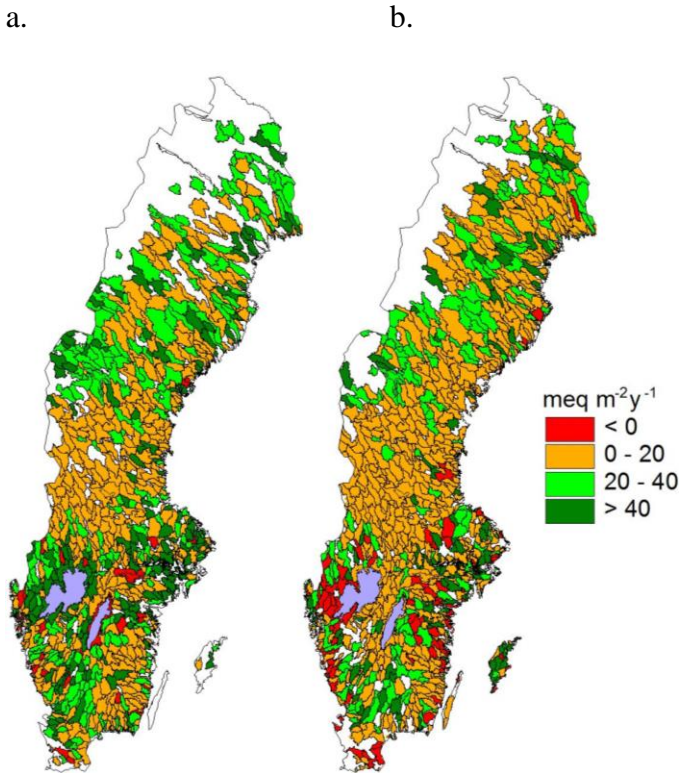


Figure 2. Critical harvesting at the deposition of 2020 according to the EMEP model in spruce forests (a) and in pine forests (b).

In spruce forest the critical harvesting was exceeded in most parts of the southern half of Sweden and along the coast in the north, already at stem-harvesting (Figure 3). Whole-tree harvesting increased the area with exceeded critical harvesting slightly, but above all it led to higher exceedances in southern Sweden (Figure 3, Table 2). In pine forests the critical harvesting was exceeded in 50% of the merged catchments at stem harvesting, but the exceedance was generally low (Figure 4; Table 2). Whole-tree harvesting led to a somewhat larger fraction of catchments where the critical harvesting was exceeded.

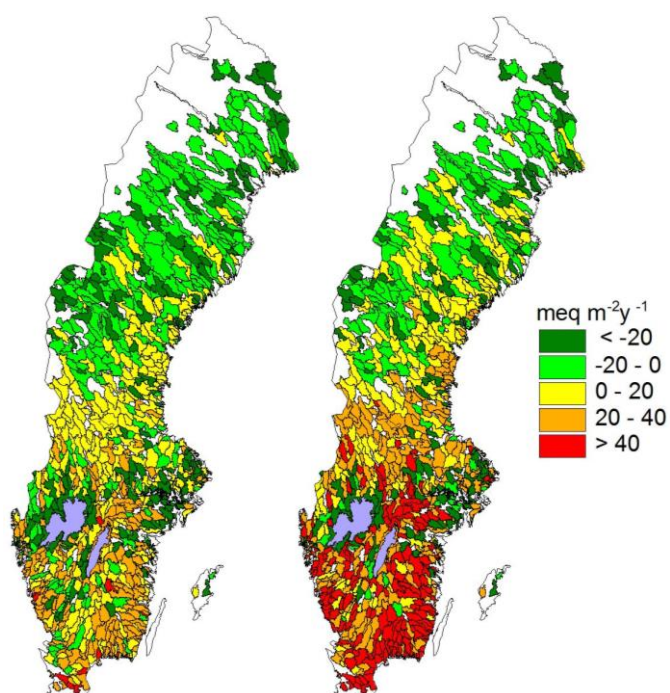


Figure 3. Exceedance of critical harvesting in spruce forest at stem harvesting (a) and whole-tree harvesting (b)

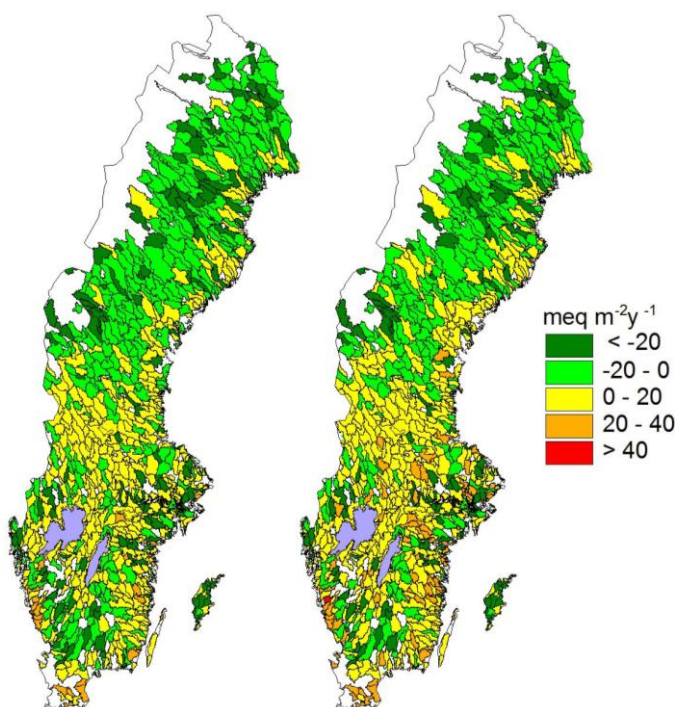


Figure 4. Exceedance of critical harvesting in pine forest at stem harvesting (a) and whole-tree harvesting (b)

Discussion

Going from critical load of acidifying deposition to critical biomass harvesting is a natural step in a country like Sweden, where the acidifying impact of biomass harvesting is often equal or greater than that of atmospheric deposition (Iwald et al., 2013). Along with the decreasing deposition, and the increasing demand of renewable energy, biomass harvesting will play an even larger role for acidification in the future. An advantage of using the steady state mass balance approach is that it is robust in that it has been applied, evaluated and discussed extensively in the critical load context (Sverdrup et al., 1995; Kurz et al., 2001; Freer-Smith et al., 2003; Kennedy et al., 2001; Jönsson et al. (1995).

Whereas the robustness and transparency are advantages of the steady state concept, the lack in dynamics is a drawback. Inputs are constant values of deposition and other parameters, thus neither historical nor future deposition and land use are taken into account. This means, for example, that the critical harvesting is overestimated in the areas with the highest deposition such as southwestern Sweden, where the historical deposition has been much higher (Pihl Karlsson et al., 2011), and where the soils accordingly have been depleted of base cations.

Dynamic models are required to account for changes over time. In Zanchi et al. (2014) the dynamic model ForSAFE has been used to study different management methods, such as stem and whole-tree harvesting have been compared, using historical deposition and climate data as well as future predictions for deposition and climate. A conclusion was that the effect of whole-tree harvesting on soil chemistry varied over the forest rotation. As opposed to the steady state concept, the advantage of dynamic modelling is the dynamic representation of processes over time, whereas the drawbacks are the less opportunities to generalize over large regions. By combining the different approaches, by applying steady state calculations and dynamic modelling in the same areas, the advantages of both approaches can be utilized (Akselsson et al., 2010).

Another effect of lacking dynamics is that climate change effects are not accounted for. A substantial effect of a changed climate on weathering was simulated in Sweden using the steady state model PROFILE in Akselsson et al. (2016). The increased weathering rates were compared with the increased losses of base cations at whole-tree harvesting, and the

conclusions drawn were that the increased weathering could not compensate for the increased base cation losses at whole-tree harvesting in most areas. Aherne et al. (2012) used the more dynamic MAGIC model in Finland, and came to similar conclusions. A fully dynamic approach was used in Gaudio et al. (2015), where the ForSAFE model was used on two forest sites in France to assess the effect of climate and deposition changes on soil chemistry. In accordance with the PROFILE and MAGIC studies, climate change gave a substantial effect on base cations, in this case shown as increased base saturation.

Both in critical load and critical harvesting calculations the handling of N requires some assumptions, since the acidifying effect of N is more complex than the effect from sulphur (Galloway, 1995). In many critical load calculations all N terms, i.e. deposition, uptake, denitrification and immobilization have been accounted for, as in Sverdrup et al. (1995). Immobilization and denitrification are terms that are difficult to quantify and thus require assumptions. In the present study it was assumed that the acidifying effect of N was limited to the present NO_3 leaching based on measurements in soil water. A median value for the whole country was used, since the concentrations are similar (very low) on most sites in Sweden. However, there are sites in southwestern Sweden with highly elevated NO_3 leaching, and in this region the acidifying effect of N can be assumed to be underestimated for many forests.

The assumption that only the NO_3 that is leaching is acidifying means that potential changes in NO_3 leaching in the future, and effects of whole-tree harvesting on NO_3 leaching, are not accounted for. In N-rich areas whole-tree harvesting could lead to reduced risk of NO_3 leaching, counteracting the acidifying effect of the base cation

removal (Zanchi et al., 2014). However, results from experiments are contradictory. Gundersen et al. (2006) concluded in a review paper that whole-tree harvesting has resulted in decreased NO₃ leaching in some studies, and increased NO₃ leaching in others. Ring et al. (2016) demonstrated in an experiment lower NO₃ concentrations in soil solution after whole-tree harvesting than after conventional harvesting. In Ring et al. (2015) one of the two investigated sites showed decreasing NO₃ concentrations with decreasing amount of logging residues left on the clearcuts, whereas the other showed no such tendency. de Jong et al. (2017) concluded in a synthesis article that whole-tree harvesting leads to no or a slightly decreased risk of N leaching.

The choice of critical limit is naturally important for the results. In critical load studies, the critical limits used were often focusing on tree health. One of the most commonly used criteria is Bc:Al ratio (Sverdrup et al., 1995). The critical limit chosen in this study, ANC=0 at 50 cm depth, is focusing on water quality. It gives no margins for recovery at that soil depth, and thus it can be seen as too low a limit, especially in areas with thin soil layers. In areas with thick soil layers, however, the weathering in deeper layers can increase the ANC before it reaches surface waters, and thus the limit is more appropriate.

The clear gradient, with increasing exceedance from north to south, corresponds to the higher base cation losses at harvesting and to the higher sulphur deposition in the south. In the southern part the exceedance is higher towards the east, although the sulphur deposition is higher in the western part. This is due to the higher weathering rate and base cation deposition in the western part, which increases the critical biomass harvesting.

The results show that whole-tree harvesting in spruce forest in the southern half of Sweden and along the coast in the north is generally not sustainable, unless nutrients are added. Also stem harvesting leads to exceedance in the southern part of the country, but the exceedance is much smaller. The areas with high exceedance coincide with the areas with most acidified soils due to historical acid deposition (Pihl Karlsson et al., 2011). The recovery in those areas are generally slow (Akselsson et al., 2013) and increased base cation losses can be expected to hamper recovery further. In pine forests there is small or no exceedance at stem harvesting, and whole-tree harvesting only changes the picture slightly. The results are important as a basis for forest management policies related to whole tree harvesting and wood ash recycling.

Conclusions

Critical biomass harvesting can be estimated based on the same steady state mass balance concept and the same national input database as for critical load of deposition. The approach is robust in that it has been extensively applied, evaluated and discussed in a critical load context. As for the critical load calculations, two important decisions have to be made, about assumptions related to the N processes and about which chemical criteria and critical limit to use.

The calculations for Sweden showed that critical biomass harvesting was exceeded in the southern half of Sweden already at stem harvesting in spruce forests, when ANC=0 was used as a critical limit. Whole-tree harvesting expanded the exceedance area, and

increased the exceedance levels in southern Sweden. In pine forests the exceedance was lower, and affected smaller areas.

The areas with exceedance coincide with the most acidified soils from acid deposition, where recovery is slow. Whole-tree harvesting, without wood ash recycling, especially in spruce forests in those areas can be expected to further slow down recovery.

Acknowledgements

The authors wish to thank for the financial support granted by the Swedish Environmental Protection Agency. We also wish to thank for important input from representatives from the Swedish Environmental Protection Agency, the Swedish Forest Agency, the Swedish Agency for Marine and Water Management and the Swedish University of Agricultural Sciences, during a number of workshops.

References

- Achat, D.L., Deleuze, C., Landmann, G., Pousse, N., Ranger, J., Augusto, L., 2015. Quantifying consequences of removing harvesting residues on forest soils and tree growth – a meta-analysis. *Forest Ecology and Management*. 348, 124–141. doi:10.1016/j.foreco.2015.03.042
- Aherne, J., Posch, M., Forsius, M., Lehtonen, A., Härkönen, K., 2012. Impacts of forest biomass removal on soil nutrient status under climate change: a catchment-based

449 modelling study for Finland. *Biogeochemistry* 107, 471-488. doi:10.1007/s10533-010-
 450 9569-4
 451 Akselsson, C., Belyazid, S., Hellsten, S., Klarqvist, M., Pihl-Karlsson, G., Karlsson, P.E.,
 452 Lundin, L., 2010. Assessing the risk of N leaching from Swedish forest soils across a
 453 steep N deposition gradient in Sweden. *Environmental Pollution* 158, 3588-3595.
 454 doi:10.1016/j.envpol.2010.08.012
 455 Akselsson, C., Hultberg, H., Karlsson, P.E., Pihl Karlsson, G., Hellsten, S., 2013.
 456 Acidification trends in south Swedish forest soils 1986-2008 – slow recovery and high
 457 sensitivity to sea-salt episodes. *Science of the Total Environment* 444, 271-287.
 458 doi:10.1016/j.scitotenv.2012.11.106
 459 Akselsson, C., Olsson, J., Belyazid, S., Capell, R., 2016. Can increased weathering rates
 460 due to future warming compensate for base cation losses following whole-tree harvesting
 461 in spruce forests? *Biogeochemistry* 128: 89-105. doi: 10.1007/s10533-016-0196-6
 462 Akselsson, C., Westling, O., 2005. Regionalized nitrogen budgets in forest soils for
 463 different deposition and forestry scenarios in Sweden. *Global Ecology and Biogeography*
 464 14, 85-95. doi:10.1111/j.1466-822X.2004.00137.x
 465 Akselsson, C., Westling, O., Sverdrup, H., Holmqvist, J., Thelin, G., Uggla, E., Malm,
 466 G., 2007. Impact of harvest intensity on long-term base cation budgets in Swedish forest
 467 soils. *Water, Air, and Soil Pollution: Focus* 7, 201-210. doi:10.1007/s11267-006-9106-6
 468 Akselsson, C., Westling, O., Örlander, G., 2004. Regional mapping of nitrogen leaching
 469 from clearcuts in southern Sweden. *Forest Ecology and Management* 202, 235-243.
 470 doi:10.1016/j.foreco.2004.07.025

471 Akselsson, C., Westling, O., Alveteg, M., Thelin, G., Fransson, A-M., Hellsten, S., 2008.
 472 The influence of N load and harvest intensity on the risk of P limitation in Swedish forest
 473 soils. *Science of the Total Environment* 404, 284-289.
 474 doi:10.1016/j.scitotenv.2007.11.017
 475 Anonymous, 2003. Ecocyclic pulp mill – ‘KAM’. Final report 1996–2002. KAM report
 476 A100, pp. 109–134. Swedish Pulp and Paper Institute, Stockholm, Sweden.
 477 Belyazid, S., Westling, O., Sverdrup, H., 2006. Modelling changes in forest soil
 478 chemistry at 16 Swedish coniferous forest sites following deposition reduction.
 479 *Environmental Pollution* 144, 596-609. doi:10.1016/j.envpol.2006.01.018
 480 Brandt, M., Ejhed, H., Rapp, L., 2008. Näringsbelastning på Östersjön och Västerhavet
 481 2006: Underlag till Sveriges PLC5-redovisning till HELCOM. Swedish Environmental
 482 Protection Agency Report 5815, Stockholm (In Swedish with English summary).
 483 Brandtberg, P.O., Olsson, B., 2012. Changes in the effects of whole-tree harvesting on
 484 soil chemistry during 10 years of stand development. *Forest Ecology and Management*
 485 277, 150–162. doi:10.1016/j.foreco.2012.04.019
 486 de Jong, J., Akselsson, C., Egnell, G., Löfgren, S., Olsson, B., 2017. Realizing the energy
 487 potential of forest biomass in Sweden - how much is environmentally sustainable? *Forest*
 488 *Ecology and Management* 383, 3-13. doi: 10.1016/j.foreco.2016.06.028
 489 Egnell, G., Nohrstedt, H.Ö., Weslien, J., Westling, O., Örlander, G., 1998.
 490 Miljökonsekvensbeskrivning av skogsbränsleuttag, asktillförsel och övrig
 491 näringskompensation. National Board of Forestry, Report 1:1998. Jönköping, Sweden.
 492 (In Swedish).

493 Evans, C.D., Cullen, J.M., Alewell C., Kopáček, J., Marchetto, A., Moldan, F., Prechtel,
 494 A., Rogora, M., Veselý, J., Wright, R., 2001. Recovery from acidification in European
 495 surface waters. *Hydrology and Earth System Sciences* 5 (3), 283–297. doi:10.5194/hess-
 496 5-283-2001

497 Freer-Smith, P., Kennedy, F., 2003. Base Cation Removal in Harvesting and Biological
 498 Limit Terms for Use in the Simple Mass Balance Equation to Calculate Critical Loads for
 499 Forest Soils. *Water, Air and Soil Pollution* 145, 409-427. doi:10.1023/A:1023615004433

500 Futter, M., Ring, E., Högbom, L., Entenmann, S., Bishop, K., 2010. Consequences of
 501 nitrate leaching following stem-only harvesting of Swedish forests are dependent on
 502 spatial scale. *Environmental Pollution* 158, 3552-3559. doi:10.1016/j.envpol.2010.08.016

503 Futter, M., Valinia, S., Löfgren, S., Köhler, S., Fölster, J., 2014. Long-term trends in
 504 water chemistry of acid-sensitive Swedish lakes show slow recovery from historic
 505 acidification. *Ambio* 43, 77-90. doi:10.1007/s13280-014-0563-2

506 Fölster, J., Wilander, A., 2002. Recovery from acidification in Swedish forest streams.
 507 *Environmental Pollution* 117, 379-389. doi:10.1016/S0269-7491(01)00201-9

508 Galloway, J., 1995. Acid deposition: Perspectives in time and space. *Water, Air, and Soil*
 509 *Pollution* 85, 15-24. doi:10.1007/BF00483685

510 Gaudio, N., Belyazid, S., Gendre, X., Mansat, A., Nicolas, M., Rizzetto, S., Sverdrup, H.,
 511 Probst, A., 2015. Combined effect of atmospheric nitrogen deposition and climate change
 512 on temperate forest soil biogeochemistry: A modeling approach. *Ecological Modelling*
 513 306, 24-34. doi:10.1016/j.ecolmodel.2014.10.002

514 Graf Pannatier, E., Thimonier, A., Schmitt, M., Walthert, L., Waldner, P., 2011. A decade
515 of monitoring at Swiss long-term forest ecosystem research (LWF) sites: Can we observe
516 trends in atmospheric acid deposition and in soil solution acidity? *Environmental*
517 *monitoring and assessment* 174, 3-30. doi:10.1007/s10661-010-1754-3

518 Gundersen, P., Schmidt, I., Rauland-Rasmussen, K., 2006. Leaching of nitrate from
519 temperate forests e effects of air pollution and forest management. *Environmental*
520 *Reviews* 14, 1-57. doi: 10.1139/A05-015

521 Helmisaari, H-S., Kaarakka, L., Olsson, B., 2014. Increased utilization of different tree
522 parts for energy purposes in the Nordic countries. *Scandinavian Journal of Forest*
523 *Research* 29(4), 312-322. doi:10.1080/02827581.2014.926097

524 Hägglund, B., 1985. En ny svensk riksskogstaxering (A new Swedish National Forest
525 Survey). Swedish University of Agricultural Sciences, Report 37. Uppsala, Sweden. (In
526 Swedish with English summary).

527 Iwald, J., Löfgren, S., Stendahl, J., Karlton, E., 2013. Acidifying effect of removal of tree
528 stumps and logging residues as compared to atmospheric deposition. *Forest Ecology and*
529 *Management* 290, 49-58. doi:10.1016/j.foreco.2012.06.022

530 Jönsson, C., Warfvinge, P., Sverdrup, H., 1995. Uncertainty in predicting weathering
531 rates and environmental stress factors with the profile model. *Water, Air and Soil*
532 *Pollution* 81, 1–23. doi:10.1007/BF00477253.

533 Kennedy, F., Rowell, D., Moffat, A. J. M., Singh, B., 2001. An Analysis of the Structure
534 of the Simple Mass Balance Equation – Implications for Testing National Critical Loads
535 Maps. *Water, Air and Soil Pollution:Focus* 1, 281–298. doi:10.1023/A:1011531922278

536 Kurz, D., Rihm, B., Alveteg, M., Sverdrup, H., 2001. Steady-state and dynamic
 537 assessment of forest soil acidification in Switzerland. *Water, Air and Soil Pollution* 130,
 538 1217-1222. doi:10.1023/A:1013964731876

539 Langner, J., Persson, C., Robertson, L., Ullerstig, A., 1996. Air pollution assessment
 540 study using the MATCH Modelling System. Application to sulphur and nitrogen
 541 compounds over Sweden 1994. Swedish Meteorological and Hydrological Institute,
 542 Report no. 69. Norrköping, Sweden.

543 Lucas, R.W., Holmström, H., Lämås, T., 2014. Intensive forest harvesting and pools of
 544 base cations in forest ecosystems: A modeling study using the Heureka decision support
 545 system. *Forest Ecology and Management* 325, 26-36. doi:10.1016/j.foreco.2014.03.053

546 Marklund L.G., 1988. Biomass functions for pine, spruce, and birch in Sweden.
 547 Department of Forest Taxation, Swedish University of Agricultural Sciences, SLU,
 548 Report 45. (In Swedish with English summary).

549 Nilsson, J., Grennfelt, P., 1988. Critical loads for sulphur and nitrogen. *NORD* 1988: 15
 550 Nordic Council of Ministers, Copenhagen. Miljörapport 15, 418 pp.

551 Nyiri, A., Gauss, M., Klein, H., 2009. Transboundary Air Pollution by Main Pollutants
 552 (S, N, O₃) and PM. MSC-W Data Note 1;2009.

553 Palvainen, M., Finér, L. 2012. Estimation of nutrient removals in stem-only and whole-
 554 tree harvesting of Scots pine, Norway spruce, and birch stands with generalized nutrient
 555 equations. *European Journal of Forest Research* 131, 945–964. doi:10.1007/s10342-011-
 556 0567-4

557 Pihl Karlsson, G., Akselsson, C., Hellsten, S., Karlsson, P.E., 2011. Reduced European
 558 emissions of S and N – Effects on air concentrations, deposition and soil water chemistry
 559 in Swedish forests. *Environmental Pollution* 159, 3571-3582.
 560 doi:10.1016/j.envpol.2011.08.007

561 Posch, M., de Smet, P., Hettelingh, J-P., Downing, R., 1995. Calculation and mapping of
 562 critical thresholds in Europe. Status report 1995, Coordination center of effects. RIVM
 563 Report No. 259101009.

564 Raab, B., Vedin, H., 1995. Klimat, sjöar och vattendrag. Sveriges Nationalatlas, band nr
 565 14. Bra Böcker, Höganäs, Sweden. (In Swedish).

566 Riek, W., Russ, A., Martin, J. 2012. Soil acidification and nutrient sustainability of forest
 567 ecosystems in the northeastern German lowlands – Results of the national forest soil
 568 inventory. *Folia Forestalia Polonica (series A)* 54 (3), 187–195.
 569 doi:10.5281/zenodo.30835

570 Ring, E., Högbom, L., Nohrstedt, H-Ö., Jacobson, S., 2015. Soil and soil-water chemistry
 571 below different amounts of logging residues at two harvested forest sites in Sweden.
 572 *Silva Fennica* 49 (4), 1-19. doi: 10.14214/sf.1265

573 Ring, E., Jacobson, S., Jansson, G., Högbom, L., 2016. Effects of whole-tree harvest on
 574 soil-water chemistry at five conifer sites in Sweden. *Canadian Journal of Forest Research*
 575 47, 349–356. doi: 10.1139/cjfr-2016-0338

576 Skjelkvåle B, Mannio J, Wilander A, Andersen T., 2001. Recovery from acidification of
 577 lakes in Finland, Norway and Sweden 1990–1999. *Hydrology and Earth System Sciences*
 578 5(3), 327–337. doi:10.5194/hess-5-327-2001

579 Sundqvist, G., Letell, M., Lidskog, R., 2002. Science and policy in air pollution
 580 abatement strategies. *Environmental Science & Policy* 5, 147–156. doi:10.1016/S1462-
 581 9011(02)00032-1
 582 Sverdrup, H., de Vries, W., 1994. Calculating critical loads for acidity with the simple
 583 mass balance method. *Water, Air, and Soil Pollution* 72, 143-162. doi:
 584 10.1007/BF01257121
 585 Sverdrup, H., Martinson, L., Alveteg, M., Moldan, F., Kronnäs, V., Munthe, J., 2005.
 586 Modeling recovery of Swedish Ecosystems from Acidification. *Ambio* 34 (1), 25-31.
 587 doi:10.1579/0044-7447-34.1.25
 588 Sverdrup H, Warfvinge P., 1993. Calculating field weathering rates using a mechanistic
 589 geochemical model (PROFILE). *Journal of Applied Geochemistry* 8, 273–83.
 590 doi:10.1016/0883-2927(93)90042-F
 591 Sverdrup, H., Warfvinge, P., 1995. Critical loads of acidity for Swedish forest
 592 ecosystems. *Ecological Bulletins* 44, 75-89.
 593 Swedish Forest Agency (2008) Skogliga konsekvensanalyser 2008: SKA-VB 08.
 594 Swedish Forest Agency Report 25, Jönköping. (In Swedish).
 595 Swedish Forest Agency, 2016. Sweden´s official forest statistics, available at
 596 www.skogsstyrelsen.se/en/.
 597 Zanchi, G., Belyazid, S., Akselsson, C., Yu, L., 2014. Modelling the effects of
 598 management intensification on multiple forest services: A Swedish case study. *Ecological*
 599 *Modelling* 284, 48-59. doi:10.1016/j.ecolmodel.2014.04.006

600 Zetterberg, T., Köhler, S., Löfgren, S., 2014. Sensitivity analyses of MAGIC modelled
601 predictions of future impacts of whole-tree harvest on soil calcium supply and stream
602 acid neutralizing capacity. Science of the Total Environment 494-495, 187-201. doi:
603 10.1016/j.scitotenv.2014.06.114

604 Zetterberg, T., Olsson, B., Löfgren, S., Hyvönen, R., Brandtberg, P.O., 2016. Long-term
605 soil calcium depletion after conventional and whole-tree harvest. Forest Ecology and
606 Management 369, 102-115. doi:10.1016/j.foreco.2016.03.027