



# LUND UNIVERSITY

## Mast cell-associated alveolar inflammation in patients with atopic uncontrolled asthma

Andersson, Cecilia; Bergqvist, Anders; Mori, Michiko; Mauad, Thais; Bjermer, Leif; Erjefält, Jonas

*Published in:*  
Journal of Allergy and Clinical Immunology

*DOI:*  
[10.1016/j.jaci.2011.01.022](https://doi.org/10.1016/j.jaci.2011.01.022)

2011

[Link to publication](#)

### *Citation for published version (APA):*

Andersson, C., Bergqvist, A., Mori, M., Mauad, T., Bjermer, L., & Erjefält, J. (2011). Mast cell-associated alveolar inflammation in patients with atopic uncontrolled asthma. *Journal of Allergy and Clinical Immunology*, 127(4), 905-U123. <https://doi.org/10.1016/j.jaci.2011.01.022>

*Total number of authors:*  
6

### **General rights**

Unless other specific re-use rights are stated the following general rights apply:  
Copyright and moral rights for the publications made accessible in the public portal are retained by the authors and/or other copyright owners and it is a condition of accessing publications that users recognise and abide by the legal requirements associated with these rights.

- Users may download and print one copy of any publication from the public portal for the purpose of private study or research.
- You may not further distribute the material or use it for any profit-making activity or commercial gain
- You may freely distribute the URL identifying the publication in the public portal

Read more about Creative commons licenses: <https://creativecommons.org/licenses/>

### **Take down policy**

If you believe that this document breaches copyright please contact us providing details, and we will remove access to the work immediately and investigate your claim.

LUND UNIVERSITY

PO Box 117  
221 00 Lund  
+46 46-222 00 00

**MAST CELL-ASSOCIATED ALVEOLAR INFLAMMATION IN PATIENTS WITH ATOPIC UNCONTROLLED ASTHMA.**

**Cecilia K Andersson, MSc<sup>1</sup>, Anders Bergqvist<sup>1</sup>, MSc<sup>1</sup>, Michiko Mori, MSc<sup>2</sup>, Thais Mauad, MD, PhD<sup>3</sup>, Leif Bjerner, MD, PhD<sup>1</sup>, and Jonas S Erjefält, PhD<sup>1,2</sup>**

<sup>1</sup>Department of Respiratory Medicine and Allergology, Lund University, Lund, Sweden

<sup>2</sup>Department of Experimental Medical Science, Lund University, Lund, Sweden

<sup>3</sup>Department of Pathology, São Paulo University, São Paulo, Brazil

---

**Corresponding author and requests for reprints should be addressed to:**

Jonas Erjefält, Assoc. Prof., e-mail: [jonas.erjefalt@med.lu.se](mailto:jonas.erjefalt@med.lu.se)

Airway Inflammation Unit, Dept. of Experimental Medical Science,

BMC D12, Lund University, SE-22184, Lund, Sweden

Phone: +46 46 222 0960, Fax: +46 46 211 3417

**Sources of support:** The Heart & Lung Foundation, Sweden, The Swedish Medical Research Council, The Swedish Asthma and Allergy Associations Research Foundation, and The Crafoord Foundation.

**Word count:** 3256

**ABSTRACT**

**Background:** A significant proportion of patients with asthma have persistent symptoms despite treatment with inhaled glucocorticosteroids (ICS).

**Objective:** We hypothesized that in these patients the alveolar parenchyma is subjected to mast cell-associated alterations.

**Methods:** Bronchial and transbronchial biopsies from healthy controls (n=8), patients with allergic rhinitis (AR) (n=8) and patients with atopic uncontrolled asthma (symptoms despite treatment with ICS: mean dose: 743 µg/day, n=14) were processed for immunohistochemical identification of mast cell subtypes and mast cell expression of FcεRI and surface-bound IgE.

**Results:** Whereas no difference in density of total bronchial mast cells was observed between asthmatic patients and healthy controls, the total alveolar mast cell density was increased in the asthmatics ( $p<0.01$ ). Division into mast cell subtypes revealed that in bronchi of asthmatics, MC<sub>T</sub> numbers decreased compared to controls ( $p\leq 0.05$ ), while MC<sub>TC</sub> increased ( $p\leq 0.05$ ). In the alveolar parenchyma from asthmatics an increased density was found for both MC<sub>T</sub> ( $p\leq 0.05$ ) and MC<sub>TC</sub> ( $p\leq 0.05$ ). The increased alveolar mast cell densities were paralleled by an increased mast cell expression of FcεRI ( $p<0.001$ ) compared to the controls. The asthmatics also had increased numbers ( $p<0.001$ ) and proportion ( $p<0.001$ ) of alveolar mast cells with surface-bound IgE. Similar increases in densities, FcεRI expression, and surface-bound IgE were not seen in separate explorations of alveolar mast cells in patients with AR.

**Conclusions:** Our data suggest that patients with atopic uncontrolled asthma have an increased parenchymal infiltration of MC<sub>T</sub> and MC<sub>TC</sub> populations with increased expression of FcεRI and surface-bound IgE compared to atopic and non-atopic controls.

**Clinical Implications:** The present mast cell alterations in the alveolar parenchyma represent a novel feature of asthma that may have clinical implications and support the rationale to target the distal airways in uncontrolled asthmatics on ICS.

**Capsule Summary:** This study demonstrates that in asthmatic patients with persistent symptoms despite conventional ICS therapy the alveolar parenchyma is infiltrated by increased numbers of mast cells that have increased expression of the high-affinity receptor for IgE (FcεRI).

**Key words:** mast cells; asthma; FcεRI; IgE; allergy; peripheral inflammation; alveolar parenchyma.

**58 Abbreviations**

- 59 IgE: immunoglobulin E
- 60 FcεRI: high affinity IgE receptor
- 61 ICS: inhaled glucocorticosteroids
- 62 GINA: global initiative for asthma
- 63 COPD: chronic obstructive pulmonary fibrosis
- 64 CF: cystic fibrosis
- 65 IPF: Idiopathic pulmonary fibrosis
- 66 AR: allergic rhinitis
- 67 ACT: asthma control test
- 68 MC<sub>TC</sub>: tryptase and chymase positive mast cells (connective tissue mast cells)
- 69 MC<sub>T</sub>: tryptase positive mast cells (mucosal mast cells)
- 70 HRP: horseradish peroxidase
- 71 DAB: 3,3' diaminobenzidine
- 72 AP: alkaline peroxidase
- 73 PD<sub>20</sub>: cumulative dose of bronchoconstrictor where FEV<sub>1</sub> fell by 20 % or more
- 74 FEV<sub>1</sub>: forced expiratory volume in 1 second
- 75 FVC: forced vital capacity
- 76 p.r.n: pro re nata, as needed
- 77

## INTRODUCTION

Asthma is a chronic inflammatory airway disease that is characterized by a reversible airway obstruction and airway hyperreactivity<sup>1, 2</sup>. Most patients have an allergic component where the immunoglobulin E (IgE) plays a central role by activating key immune cells through the high affinity IgE receptor, FcεRI<sup>3, 4</sup>. Although treatment with bronchodilators and inhaled glucocorticosteroids (ICS) generally provide good control of the disease, a significant proportion of the asthma patients have persistent symptoms despite conventional therapy<sup>5</sup>. This phenomenon, referred to as uncontrolled asthma<sup>6,7</sup>, represents a major challenge for improved asthma control.

Despite the clinical significance of uncontrolled asthma, little is known about the inflammatory processes that evoke symptoms in this group of patients. One possibility is existence of steroid-resistant inflammatory components in the central airways<sup>8</sup>. Another alternative is involvement of peripheral airways<sup>9, 10</sup>, which are difficult to reach by conventional inhalation therapy<sup>11</sup>. The few previous studies that have explored transbronchial biopsies from asthmatics provide clear indications that both small airways and alveolar tissues may be subjected to a cellular inflammation in asthma<sup>12-14</sup>.

Mast cells have long been recognized as a key cell of the allergic reaction in atopic asthma, by virtue of their expression of FcεRI<sup>15</sup>. They are widely present in high numbers in human peripheral airways, including the alveolar region<sup>10, 12, 16-18</sup>. We recently identified a distinct mast cell population in the alveolar tissue of normal lungs<sup>19</sup>. These poorly studied alveolar mast cells, which are characterized by a low FcεRI expression, comprise a large mast cell population in the human lung<sup>12, 19, 20</sup>.

Increased numbers of bronchial mast cells and elevated levels of IgE have been described in allergic asthma<sup>10, 12, 17, 21, 22</sup>. From this, and the fact that high IgE-levels may lead to increased FcεRI expression on mast cells<sup>23, 24</sup>, we hypothesized that patients with ICS-treated, atopic uncontrolled asthma have a significantly altered mast cell population where the normally FcεRI low-expressing alveolar mast cells have acquired an FcεRI-expressing phenotype. To test this hypothesis mast cell densities and mast cell expression of FcεRI and surface-bound IgE were analyzed in bronchial and transbronchial biopsies from atopic, uncontrolled asthmatics and healthy control subjects. Separate comparisons were also made with patients with atopic allergic rhinitis (AR) with no concomitant asthma.

## METHODS

### Subjects

*Patients with atopic uncontrolled asthma, non-atopic and atopic control groups:*

The present study involved 14 non-smoking patients with uncontrolled atopic asthma according to GINA guidelines and asthma control test (ACT)<sup>6, 25</sup>. Eight healthy never-smoking non-atopic subjects that had negative skin prick test (SPT), were not hyper-responsive to metacholine, and lacked of any history of respiratory symptoms were used as controls. As a separate control group, representing atopy without asthma, included 8 patients with clinically confirmed AR<sup>26</sup>.

From each of the 30 subjects, 5 central airway biopsies and 5 transbronchial biopsies (in total 300 biopsies) were collected during a study period from November 2005 to June 2010 at the Department of Respiratory Medicine, Lund University Hospital (for methodological details, see ref<sup>27</sup> and online supplement). All subjects gave their written informed consent to participate in the study, which was approved by the ethics committee in Lund (LU412-03).

Lungs from patients with advanced stages of non-atopic patients with chronic obstructive pulmonary disease (COPD) and cystic fibrosis were included to study the FcεRI expression on alveolar mast cells in lungs subjected to a non-allergic inflammation. The clinical characterization of these patients and their matching controls, are presented in the online supplement and Table E2.

### Allergy screening



Standardized skin prick test (SPT) (Alk Abello, Copenhagen, Denmark) was performed on all subjects in all cohorts (controls, asthma, AR, COPD and CF) and was used to screen for sensitization for 10 aeroallergens (birch, timothy, mugwort, cat, dog, horse, *D. pteronyssinus*, *D. farinae*, *Aspergillus fumigatus* and *Cladosporium herbarum*). Atopy was defined as a positive SPT (weal reaction larger or equal to histamine positive control) to one or more allergens. Patients with positive SPT to pollen without any other sensitivity were classified as seasonal, whereas patients with multiple sensitivities (pollen, animal, mould and/or mite) were classified as perennial. For all subjects with positive SPT to seasonal pollen, bronchoscopy procedures were performed outside pollen season.

## **Tissue Processing**

### *Bronchial and Transbronchial biopsies*

All biopsies from uncontrolled asthmatics and 4 out of 5 bronchial and 4 out of 5 transbronchial biopsies from the healthy controls were immediately placed in 4% buffered formaldehyde, dehydrated, embedded in paraffin. Serial sections from all paraffin blocks were stained with Mayer's haematoxylin and these were used to select 2 bronchial and 2 transbronchial biopsies from each patient that had a well-preserved morphology and were without any crush, or mechanically-induced stretch artifacts. The selected biopsies were used for quantification of mast cell-related parameters.

The remaining biopsies from the control patients and biopsies the rhinitis cohort were immersed in periodate-lysine containing 1% paraformaldehyde (1% PLP) for 4 h at 4°C. Specimens were embedded in OCT (Tissue-Tek, Miles Laboratories, IN), and frozen. Serial cryo sections from all biopsies were generated and stored until histological assessments (see below).

## Immunohistochemistry

All antibodies used have been extensively validated for staining of paraffin embedded human tissue sections (and cryo sections) in research and routine clinical diagnosis (Table E1). For details on immunohistochemical protocols and specificity controls<sup>19, 20</sup>, see online supplement). Staining was absent in sections using isotype-matched control antibodies (Dako, Glostrup, Denmark). Staining was performed identically for all patient groups.

### *Double Immunohistochemical Staining of MC<sub>TC</sub> and MC<sub>T</sub>*

A double staining protocol was used for simultaneous visualization of MC<sub>TC</sub> and MC<sub>T</sub> cells<sup>18-20, 28-32</sup>. The immunohistochemistry protocol was performed using an automated immunohistochemistry robot (Autostainer, Dako) with EnVision™ G|2 Doublestain System (K5361, Dako). For protocol details, see Table E1 and online supplement.

### *Immunohistochemical Identification of FcεRI<sup>+</sup> and IgE<sup>+</sup> Mast Cells*

A triple staining immunofluorescence protocol<sup>19, 20, 33, 34</sup> was used to simultaneously visualize both MC<sub>TC</sub> and MC<sub>T</sub> populations together with their expression of the IgE receptor (FcεRI) or surface-bound IgE (see online supplement and Table E1).

## Histological Analysis and Quantification

### *Quantification of Densities of Mast Cell Subtypes*

High-resolution images of sections -stained for MC<sub>TC</sub> and MC<sub>T</sub> were generated through a 20x microscope lens by an automated digital slide-scanning robot (Scanscope CS™, Aperio, Vista, CA). In bronchial biopsies the densities of MC<sub>T</sub> and MC<sub>TC</sub> was also calculated in sub-anatomical compartments: *epithelium, subepithelial tissue (excluding smooth muscle and glands), smooth muscle tissue and subepithelial glands*. An image analysis program

(ImageScope, v10.0.36.1805, Aperio) calculated the tissue area within the delineated region by automatically excluding any non-tissue regions (i.e. regions without any tissue components) and the proper tissue density (expressed as cells / mm<sup>2</sup> tissue) was calculated for each mast cell subtype<sup>14, 19, 20, 30, 35-37</sup>.

#### *Quantification of FcεRI<sup>+</sup> and IgE<sup>+</sup> Mast Cells*

After triple immunofluorescence staining, the filter setting was adjusted to reveal the tryptase-positive mast cells at 488 nm. By alternating the filter settings each tryptase-positive cell was examined for presence of chymase (647 nm) as well as expression of FcεRIα or surface-bound IgE (555 nm). The density of mast cells expressing FcεRI and IgE was calculated by multiply the percentage of MC<sup>FcεRI<sup>+</sup></sup> or MC<sup>IgE<sup>+</sup></sup> with the total mast cell density in the same tissue region (for further details and quantification on COPD and CF, see ref <sup>18</sup> and online supplement).

#### **Statistical Analysis**

Data were analyzed statistically on mean values from each patient, using Mann-Whitney rank sum test for comparison between two groups (disease vs. control) using GraphPad Prism v. 5 (GraphPad Software Inc., La Jolla, CA). For all outcomes, a p-value ≤ 0.05 was considered significant (\* denotes  $p \leq 0.05$ , \*\*  $p < 0.01$  and \*\*\*  $< 0.001$ ).

## RESULTS

### Clinical Characteristics

An overview of the patient characteristics is presented in Table 1.

*Uncontrolled asthma:* The 14 asthma patients included in the study had symptomatic uncontrolled asthma (ACT score ranging from 11 to 21). All were atopic (i.e. positive SPT), and all but one had rhinitis. All asthma patients were treated with inhaled glucocorticosteroids (Budesonid) and inhaled bronchodilators (Table 1). Two patients were treated with leukotriene-receptor antagonists and 3 had nasal corticosteroids and anti-histamines p.r.n. In addition, 1 patient was treated for hypertension (losartan potassium/hydrochlorothiazide), 2 for gastritis (omeprazole) and 1 with vitamin B substitute. None of the patients were treated with anti-IgE therapy. Two patients had seasonal and 12 had perennial allergy. *AR:* The 8 patients with AR with no concomitant asthma all had positive SPT and were not hyper-responsive to metacholine (PD<sub>20</sub> > 2000 µg). None of the AR patients were treated with inhaled bronchodilators or glucocorticosteroids. Two had nasal corticosteroids and 4 had anti-histamines p.r.n. One patient had seasonal and 7 had perennial allergy. *Healthy controls:* All healthy controls were without any respiratory symptoms, had normal lung function, and negative SPT and metacholine challenge test (PD<sub>20</sub> > 2000 µg). FEV<sub>1</sub> % predicted was lower in patients with asthma (81 [63-108] FEV<sub>1</sub> % pred.) compared to healthy controls (98 [72-116] FEV<sub>1</sub> % pred., p = 0.03) and patients with rhinitis (107 [96-138] FEV<sub>1</sub> % pred., p = 0.001). No difference in FEV<sub>1</sub> % pred. was found between controls and rhinitis (p = 0.3). In addition, 5 CF and 10 COPD patients were investigated<sup>19, 20</sup> (for patient and protocol details, see online supplement).

## Characterization of Mast Cell Phenotypes in Uncontrolled Asthma and Healthy Controls

### *Densities of MC<sub>T</sub> and MC<sub>TC</sub> Populations*

In central airways, the total tissue density of mast cells did not differ between patients with uncontrolled asthma and healthy control subjects (Table 2). In contrast, the alveolar parenchyma displayed increased numbers of mast cells in patients with uncontrolled asthma compared to healthy controls (Table 2). The unaltered total mast cell numbers in central airways in uncontrolled asthma was a result of a decrease in MC<sub>T</sub> numbers combined with an increase in MC<sub>TC</sub> numbers compared to healthy controls (Table 2 and Figure 1). The significant increase in total alveolar mast cell numbers in uncontrolled asthmatics was due to an increase in both MC<sub>T</sub> cells and MC<sub>TC</sub> numbers compared to healthy controls (Table 2 and Figure 1).

### *Microlocalization of Mast Cell Subtypes in Central Airways*

The highest density of mast cells was found in the lamina propria for both control subjects and asthmatics. No difference in the distribution of mast cells was found for the MC<sub>T</sub> subclass in asthmatics compared to controls (Table E3). The MC<sub>TC</sub> density increased in the smooth muscle layer in asthmatics (7.1 [0-25] mast cells per mm<sup>2</sup>) compared to controls (1.0 [0-5] mast cells per mm<sup>2</sup>,  $p = 0.01$ ) (Table E3).

### *Expression of FcεRIα and IgE on Bronchial and Alveolar Mast Cells*

Both FcεRIα and IgE immunoreactivity displayed a characteristic membrane staining in triple-stained immunofluorescence sections. As previously shown<sup>12, 19, 38</sup>, the proportion of mast cell expressing FcεRIα was high in central airways in healthy subjects, and no significant difference in expression to uncontrolled asthmatics was observed (Figure 2A and

Table 2). The mast cell expression of FcεRIα did not differ between controls and asthmatics, neither for MC<sub>T</sub> ( $p = 0.4$ ) nor for the MC<sub>TC</sub> subtype ( $p = 0.5$ ). In contrast, in the alveolar parenchyma, the mast cell expression of FcεRIα was low in healthy controls and significantly higher in uncontrolled asthma (Figure 2B, C-D and Table 2). The increased FcεRIα expression in uncontrolled asthma was further confirmed using a computerized image analysis approach was used to calculate the area of FcεRIα immunoreactivity on individual mast cells (see online supplement).

In central airways, the proportion of IgE<sup>+</sup> mast cells was low in healthy controls and significantly increased in uncontrolled asthmatics (Figure 2E and Table 2). Also in the alveolar parenchyma, the proportion of IgE<sup>+</sup> mast cells was low in controls and significantly increased in the alveolar parenchyma (Figure 2F, G-H and Table 2). As for the expression of FcεRIα, no difference in mast cell-bound IgE was found between MC<sub>T</sub> and MC<sub>TC</sub> subclasses, neither in central airways (controls:  $p = 0.5$ , asthma:  $p = 0.2$ ) nor in alveolar parenchyma (controls:  $p = 0.4$ , asthma:  $p = 0.1$ ).

In alveolar parenchyma, the tissue density of FcεRIα positive mast cells was increased in uncontrolled asthmatics ( $132 [9-591] \text{ MC}^{\text{Fc}\epsilon\text{RI}\alpha+}/\text{mm}^2$ ) compared to controls ( $1.5 [0-27] \text{ MC}^{\text{Fc}\epsilon\text{RI}\alpha+}/\text{mm}^2$ ,  $p = 0.0003$ ) (Figure 3A). Also an increase in the density of mast cells positive for surface-bound IgE was found in the asthmatics ( $133 [8-591] \text{ MC}^{\text{IgE}+}/\text{mm}^2$ ) compared to controls ( $0 [0-3] \text{ MC}^{\text{IgE}+}/\text{mm}^2$ ,  $p = 0.0001$ ) (Figure 3B).

## **FcεRIα and IgE expression on Alveolar Mast Cells in AR and Non-Allergic Inflammatory Diseases**

### *Allergic Rhinitis*

In AR, no significant change in total mast cell numbers or the density of MC<sub>T</sub> and MC<sub>TC</sub> was found in central airways or in alveolar parenchyma compared to healthy controls (Table 2). No increase in the proportion of mast cells expressing the FcεRIα could be found in central airways or in the alveolar parenchyma in patients with AR compared to controls (Table 2). No significant increase in the proportion of mast cells with surface bound IgE was found in central airways. However, an increase in the proportion of mast cells with surface bound IgE was found in alveolar parenchyma in patients with AR compared to controls (Table 2).

#### *Non-Allergic Lung Diseases: Comparison to COPD and CF*

The FcεRIα expression was high in central airways in controls compared to the same compartment in COPD and CF. In alveolar parenchyma, the mast cell FcεRIα expression was low in controls; no significant change was found in COPD and CF patients (see online supplement).

## DISCUSSION

Accumulated evidence from physiological studies and tissue explorations suggest that inflammatory processes in the distal airways contribute to asthma pathogenesis<sup>39</sup>. The present study advances our insight about the nature of this inflammation by identifying an alveolar infiltration of altered MC<sub>T</sub> and MC<sub>TC</sub> populations as a novel histopathological feature.

The present study took advantage of our possibility to obtain bronchial as well as transbronchial biopsies, not only from patients with uncontrolled asthma, but also from healthy control subjects. Thus, our approach allowed the first exploration of how mast cells in both bronchial and alveolar compartments in uncontrolled asthmatics differ from healthy base-line conditions.

The discovery of increased FcεRI-expression on alveolar mast cells in uncontrolled asthma represents a major finding in this study. Mast cells in most types of tissues, especially those facing the external environment, have a high basal expression of FcεRI<sup>15</sup>. The alveolar mast cells, however, have under healthy conditions a very low FcεRI expression<sup>19</sup>. In this study the number of FcεRI expressing mast cells in the alveolar parenchyma in uncontrolled asthma was 40-fold higher than what could be observed in healthy controls. Furthermore, this was associated with an equally robust (500-fold) increase in numbers of mast cells with surface-bound IgE, suggesting that the alveolar mast cells in uncontrolled asthma have acquired a phenotype fully capable to classical IgE-mediated activation. Importantly, this feature seems to be specific to asthma since we by same staining techniques could not detect similar changes in patients with severe non-allergic alveolar inflammation (end-stage CF, or COPD) as well as atopic patients with AR.



The low expression of FcεRIα on alveolar mast cells in AR, present in our study, indicates that atopy *per se* does not cause the altered alveolar mast cell phenotypes found in uncontrolled asthma. It should however be noted that the situation may be different in AR patients during episodes of increased allergen exposure. Although we could not find increased FcεRI expression in central airways, previous studies have reported increased numbers of bronchial FcεRI<sup>+</sup> mast cells in atopic, non-asthmatic subjects<sup>38</sup>. The vast majority of patients with asthma have rhinitis<sup>42</sup> and rhinitis, especially at severe stages, is a major risk factor for developing asthma<sup>43-45</sup>. Hence, in future studies it seems important to explore the FcεRI expression on alveolar mast cells in high-risk rhinitis patients and newly diagnosed asthma patients with rhinitis. If high FcεRI and IgE-expressing alveolar mast cells are present in additional asthma cohorts needs to be further investigated. Furthermore, we could not detect similar changes in other airway diseases characterized by extensive alveolar inflammation and/or remodeling like COPD and cystic fibrosis, despite a rich occurrence of alveolar mast cells in these diseases. It should however be noted that CF and COPD differs from the uncontrolled asthmatic group, not only in pathological features but also in treatment. Despite their medication, these patients have a significant remaining inflammatory response in the alveolar parenchyma. In this inflammation the alveolar mast cells have a low expression of the IgER.

Although most of the inhaled allergens are deposited in the conducting airways, common allergens may well be transported by respirable particles all the way to the alveolar region<sup>46-48</sup>. For patients sensitized to systemic allergens, the presence of FcεRI<sup>+</sup> mast cells in the alveolar parenchyma could theoretically contribute to the increased risk of anaphylaxis associated with asthma<sup>49</sup>. If occurring, an IgE-driven allergic inflammation in the alveolar

parenchyma is likely to have pathophysiological implications. Several mast cell mediators have pro-fibrotic and matrix-modulating properties and may thus contribute to the structural alterations that recently have been observed in alveolar tissues from asthmatics<sup>27</sup>.

In 2002, Brightling *et al*<sup>17</sup> showed that the density of mast cells in the airway smooth muscle layer increased in asthmatic subjects. This phenomenon was also found in the present study, where an increased density of MC<sub>TC</sub> cells, but not MC<sub>T</sub>, was found in the bronchial smooth muscle layer of uncontrolled asthmatics compared to the same compartment in healthy controls. Given that this mast cell subtype is thought to be steroid insensitive, and that several mast cell mediators have the ability to cause airway bronchoconstriction, hyperresponsiveness and remodeling, this finding supports the proposed pathophysiological effects of smooth muscle-associated mast cells in asthma<sup>54, 55</sup>.

In this study, we found no direct correlations between mast cell parameters and lung function values within the uncontrolled asthma cohort in this study (see online supplement). However, the number of patients was small and previous studies have shown that conventional lung functional parameters might not accurately represent distal lung inflammation<sup>56</sup>. Indeed, it has been demonstrated that measurements of thoracic gas volume and total lung capacity better represents peripheral inflammation, and that these parameters correlate to e.g. distal eosinophilic inflammation in patients with nocturnal asthma<sup>37</sup>.

In support of a beneficial effect of the ongoing treatment with ICS, the MC<sub>T</sub> population decreased in central airways of asthmatics, while the MC<sub>TC</sub> numbers increased. As steroids have previously been showed to reduce mast cell numbers in central airways and to mainly affect the MC<sub>T</sub> population<sup>57</sup>, this observation implies an effect of ICS on mast cells in the

bronchi. In contrast, both MC<sub>T</sub> and MC<sub>TC</sub> subpopulations increased significantly in the less steroid-exposed alveolar parenchyma, which indicates that alveolar mast cell populations are not well targeted by conventional ICS therapy.

Our data support the notion that patients who do not respond to conventional ICS therapy may have a peripheral airway inflammation and should thus benefit from treatment strategies with improved targeting of the distal lung<sup>11, 58</sup>. ICS, which are the foundation treatment of choice for asthma patients<sup>6, 59, 60</sup>, were originally developed to primarily treat the central airways. Anti-IgE therapy (Omalizumab; Xolair®) was developed on the basis of the proposed IgE-driven allergic inflammation in the conducting airways<sup>63-65</sup>. Omalizumab down-regulate both IgE and FcεRI-bearing mast cells in asthmatic bronchi<sup>3, 66</sup>. Future studies are now needed to investigate if anti-IgE therapy yields similar effects in the alveolar compartment.

In summary, this study has demonstrated that atopic asthma patients with persistent symptoms despite conventional ICS therapy have increased MC<sub>T</sub> and MC<sub>TC</sub> populations in the alveolar parenchyma. These expanded populations are characterized by markedly elevated expression of FcεRI and surface-bound IgE. Apart from advancing the concept of a distal airway inflammation in asthma, this observation provides important indications regarding how to improve treatment strategies for uncontrolled asthma.

392 **ACKNOWLEDGEMENTS**

393 We thank Karin Jansner and Britt-Marie Nilsson for skillful technical assistance with tissue  
394 processing and immunohistochemical staining.

395

## REFERENCES

1. Barnes PJ. Immunology of asthma and chronic obstructive pulmonary disease. *Nat Rev Immunol* 2008; 8:183-92.
2. Busse WW, Lemanske RF, Jr. Asthma. *N Engl J Med* 2001; 344:350-62.
3. Holgate S, Casale T, Wenzel S, Bousquet J, Deniz Y, Reisner C. The anti-inflammatory effects of omalizumab confirm the central role of IgE in allergic inflammation. *J Allergy Clin Immunol* 2005; 115:459-65.
4. Holt PG, Macaubas C, Stumbles PA, Sly PD. The role of allergy in the development of asthma. *Nature* 1999; 402:B12-7.
5. Holgate ST. Novel targets of therapy in asthma. *Curr Opin Pulm Med* 2009; 15:63-71.
6. Global Initiative for asthma. GINA Report, Global Strategy for Asthma Management and Prevention. [www.ginasthma.com](http://www.ginasthma.com). 2006.
7. Cazzoletti L, Marcon A, Janson C, Corsico A, Jarvis D, Pin I, et al. Asthma control in Europe: a real-world evaluation based on an international population-based study. *J Allergy Clin Immunol* 2007; 120:1360-7.
8. Barnes PJ, Adcock IM. Glucocorticoid resistance in inflammatory diseases. *Lancet* 2009; 373:1905-17.
9. de Magalhaes Simoes S, dos Santos MA, da Silva Oliveira M, Fontes ES, Fernezlian S, Garippo AL, et al. Inflammatory cell mapping of the respiratory tract in fatal asthma. *Clin Exp Allergy* 2005; 35:602-11.
10. Elliot JG, Abramson MJ, Drummer OH, Walters EH, James AL. Time to death and mast cell degranulation in fatal asthma. *Respirology* 2009; 14:808-13.
11. Martin RJ. Therapeutic significance of distal airway inflammation in asthma. *J Allergy Clin Immunol* 2002; 109:S447-60.

- 422 12. Balzar S, Strand M, Rhodes D, Wenzel SE. IgE expression pattern in lung:  
423 relation to systemic IgE and asthma phenotypes. *J Allergy Clin Immunol* 2007; 119:855-62.
- 424 13. Bergeron C, Hauber HP, Gotfried M, Newman K, Dhanda R, Servi RJ, et al.  
425 Evidence of remodeling in peripheral airways of patients with mild to moderate asthma: effect  
426 of hydrofluoroalkane-flunisolide. *J Allergy Clin Immunol* 2005; 116:983-9.
- 427 14. Kraft M, Djukanovic R, Wilson S, Holgate ST, Martin RJ. Alveolar tissue  
428 inflammation in asthma. *Am J Respir Crit Care Med* 1996; 154:1505-10.
- 429 15. Bradding P, Walls AF, Holgate ST. The role of the mast cell in the  
430 pathophysiology of asthma. *J Allergy Clin Immunol* 2006; 117:1277-84.
- 431 16. Craig SS, DeBlois G, Schwartz LB. Mast cells in human keloid, small intestine,  
432 and lung by an immunoperoxidase technique using a murine monoclonal antibody against  
433 tryptase. *Am J Pathol* 1986; 124:427-35.
- 434 17. Brightling CE, Bradding P, Symon FA, Holgate ST, Wardlaw AJ, Pavord ID.  
435 Mast-cell infiltration of airway smooth muscle in asthma. *N Engl J Med* 2002; 346:1699-705.
- 436 18. Weidner N, Austen KF. Heterogeneity of mast cells at multiple body sites.  
437 Fluorescent determination of avidin binding and immunofluorescent determination of  
438 chymase, tryptase, and carboxypeptidase content. *Pathol Res Pract* 1993; 189:156-62.
- 439 19. Andersson CK, Mori M, Bjermer L, Lofdahl CG, Erjefalt JS. Novel site-specific  
440 mast cell subpopulations in the human lung. *Thorax* 2009; 64:297-305.
- 441 20. Andersson CK, Mori M, Bjermer L, Lofdahl CG, Erjefalt JS. Alterations in lung  
442 mast cell populations in patients with chronic obstructive pulmonary disease. *Am J Respir*  
443 *Crit Care Med* 2010; 181:206-17.
- 444 21. Brown JL, Behndig AF, Sekerel BE, Pourazar J, Blomberg A, Kelly FJ, et al.  
445 Lower airways inflammation in allergic rhinitis: a comparison with asthmatics and normal  
446 controls. *Clin Exp Allergy* 2007; 37:688-95.

- 447 22. den Otter I, Silva LF, Carvalho AL, Pires-Neto RC, Annoni R, Ferreira DS, et  
 448 al. High-affinity immunoglobulin E receptor expression is increased in large and small  
 449 airways in fatal asthma. *Clin Exp Allergy* 2010; 40:1473-81.
- 450 23. Gould HJ, Sutton BJ. IgE in allergy and asthma today. *Nat Rev Immunol* 2008;  
 451 8:205-17.
- 452 24. Smurthwaite L, Walker SN, Wilson DR, Birch DS, Merrett TG, Durham SR, et  
 453 al. Persistent IgE synthesis in the nasal mucosa of hay fever patients. *Eur J Immunol* 2001;  
 454 31:3422-31.
- 455 25. Schatz M, Sorkness CA, Li JT, Marcus P, Murray JJ, Nathan RA, et al. Asthma  
 456 Control Test: reliability, validity, and responsiveness in patients not previously followed by  
 457 asthma specialists. *J Allergy Clin Immunol* 2006; 117:549-56.
- 458 26. Bousquet J, Khaltaev N, Cruz AA, Denburg J, Fokkens WJ, Togias A, et al.  
 459 Allergic Rhinitis and its Impact on Asthma (ARIA) 2008 update (in collaboration with the  
 460 World Health Organization, GA(2)LEN and AllerGen). *Allergy* 2008; 63 Suppl 86:8-160.
- 461 27. Nihlberg K, Andersson-Sjoland A, Tufvesson E, Erjefalt JS, Bjerner L,  
 462 Westergren-Thorsson G. Altered matrix production in the distal airways of individuals with  
 463 asthma. *Thorax* 2010; 65:670-6.
- 464 28. Irani AA, Schechter NM, Craig SS, DeBlois G, Schwartz LB. Two types of  
 465 human mast cells that have distinct neutral protease compositions. *Proc Natl Acad Sci U S A*  
 466 1986; 83:4464-8.
- 467 29. Irani AM, Nilsson G, Miettinen U, Craig SS, Ashman LK, Ishizaka T, et al.  
 468 Recombinant human stem cell factor stimulates differentiation of mast cells from dispersed  
 469 human fetal liver cells. *Blood* 1992; 80:3009-21.
- 470 30. KleinJan A, McEuen AR, Dijkstra MD, Buckley MG, Walls AF, Fokkens WJ.  
 471 Basophil and eosinophil accumulation and mast cell degranulation in the nasal mucosa of

- 472 patients with hay fever after local allergen provocation. *J Allergy Clin Immunol* 2000;  
473 106:677-86.
- 474 31. Weidner N, Austen KF. Ultrastructural and immunohistochemical  
475 characterization of normal mast cells at multiple body sites. *J Invest Dermatol* 1991; 96:26S-  
476 30S; discussion S-1S, 60S-5S.
- 477 32. Mori A, Zhai YL, Toki T, Nikaido T, Fujii S. Distribution and heterogeneity of  
478 mast cells in the human uterus. *Hum Reprod* 1997; 12:368-72.
- 479 33. Brown JK, Pemberton AD, Wright SH, Miller HR. Primary antibody-Fab  
480 fragment complexes: a flexible alternative to traditional direct and indirect immunolabeling  
481 techniques. *J Histochem Cytochem* 2004; 52:1219-30.
- 482 34. Toivonen R, Mayranpaa MI, Kovanen PT, Savontaus M. Dilated  
483 cardiomyopathy alters the expression patterns of CAR and other adenoviral receptors in  
484 human heart. *Histochem Cell Biol* 2010; 133:349-57.
- 485 35. Balzar S, Chu HW, Strand M, Wenzel S. Relationship of small airway chymase-  
486 positive mast cells and lung function in severe asthma. *Am J Respir Crit Care Med* 2005;  
487 171:431-9.
- 488 36. Balzar S, Wenzel SE, Chu HW. Transbronchial biopsy as a tool to evaluate  
489 small airways in asthma. *Eur Respir J* 2002; 20:254-9.
- 490 37. Sutherland ER, Martin RJ, Bowler RP, Zhang Y, Rex MD, Kraft M. Physiologic  
491 correlates of distal lung inflammation in asthma. *J Allergy Clin Immunol* 2004; 113:1046-50.
- 492 38. Humbert M, Grant JA, Taborda-Barata L, Durham SR, Pfister R, Menz G, et al.  
493 High-affinity IgE receptor (FcεRI)-bearing cells in bronchial biopsies from atopic and  
494 nonatopic asthma. *Am J Respir Crit Care Med* 1996; 153:1931-7.
- 495 39. Gelfand EW, Kraft M. The importance and features of the distal airways in  
496 children and adults. *J Allergy Clin Immunol* 2009; 124:S84-7.



- 497 40. Csaba G, Kovacs P, Pallinger E. Gender differences in the histamine and  
498 serotonin content of blood, peritoneal and thymic cells: a comparison with mast cells. *Cell*  
499 *Biol Int* 2003; 27:387-9.
- 500 41. Dunlop SP, Jenkins D, Spiller RC. Age-related decline in rectal mucosal  
501 lymphocytes and mast cells. *Eur J Gastroenterol Hepatol* 2004; 16:1011-5.
- 502 42. Greisner WA, 3rd, Settipane RJ, Settipane GA. Co-existence of asthma and  
503 allergic rhinitis: a 23-year follow-up study of college students. *Allergy Asthma Proc* 1998;  
504 19:185-8.
- 505 43. Guerra S, Sherrill DL, Martinez FD, Barbee RA. Rhinitis as an independent risk  
506 factor for adult-onset asthma. *J Allergy Clin Immunol* 2002; 109:419-25.
- 507 44. Linneberg A, Henrik Nielsen N, Frolund L, Madsen F, Dirksen A, Jorgensen T.  
508 The link between allergic rhinitis and allergic asthma: a prospective population-based study.  
509 The Copenhagen Allergy Study. *Allergy* 2002; 57:1048-52.
- 510 45. Settipane RJ, Hagy GW, Settipane GA. Long-term risk factors for developing  
511 asthma and allergic rhinitis: a 23-year follow-up study of college students. *Allergy Proc* 1994;  
512 15:21-5.
- 513 46. Custovic A, Woodcock H, Craven M, Hassall R, Hadley E, Simpson A, et al.  
514 Dust mite allergens are carried on not only large particles. *Pediatr Allergy Immunol* 1999;  
515 10:258-60.
- 516 47. Taylor PE, Flagan RC, Miguel AG, Valenta R, Glovsky MM. Birch pollen  
517 rupture and the release of aerosols of respirable allergens. *Clin Exp Allergy* 2004; 34:1591-6.
- 518 48. Taylor PE, Flagan RC, Valenta R, Glovsky MM. Release of allergens as  
519 respirable aerosols: A link between grass pollen and asthma. *J Allergy Clin Immunol* 2002;  
520 109:51-6.

- 521 49. Gonzalez-Perez A, Aponte Z, Vidaurre CF, Rodriguez LA. Anaphylaxis  
522 epidemiology in patients with and patients without asthma: a United Kingdom database  
523 review. *J Allergy Clin Immunol* 2010; 125:1098-104 e1.
- 524 50. Hakim-Rad K, Metz M, Maurer M. Mast cells: makers and breakers of allergic  
525 inflammation. *Curr Opin Allergy Clin Immunol* 2009; 9:427-30.
- 526 51. Kalesnikoff J, Galli SJ. New developments in mast cell biology. *Nat Immunol*  
527 2008; 9:1215-23.
- 528 52. Galli SJ, Tsai M, Piliponsky AM. The development of allergic inflammation.  
529 *Nature* 2008; 454:445-54.
- 530 53. Fischer M, Harvima IT, Carvalho RF, Moller C, Naukkarinen A, Enblad G, et  
531 al. Mast cell CD30 ligand is upregulated in cutaneous inflammation and mediates  
532 degranulation-independent chemokine secretion. *J Clin Invest* 2006; 116:2748-56.
- 533 54. Berger P, Laurent F, Begueret H, Perot V, Rouiller R, Raherison C, et al.  
534 Structure and function of small airways in smokers: relationship between air trapping at CT  
535 and airway inflammation. *Radiology* 2003; 228:85-94.
- 536 55. Berger P, Girodet PO, Begueret H, Ousova O, Perng DW, Marthan R, et al.  
537 Tryptase-stimulated human airway smooth muscle cells induce cytokine synthesis and mast  
538 cell chemotaxis. *FASEB J* 2003; 17:2139-41.
- 539 56. Wagner EM, Liu MC, Weinmann GG, Permutt S, Bleecker ER. Peripheral lung  
540 resistance in normal and asthmatic subjects. *Am Rev Respir Dis* 1990; 141:584-8.
- 541 57. Bentley AM, Hamid Q, Robinson DS, Schotman E, Meng Q, Assoufi B, et al.  
542 Prednisolone treatment in asthma. Reduction in the numbers of eosinophils, T cells, tryptase-  
543 only positive mast cells, and modulation of IL-4, IL-5, and interferon-gamma cytokine gene  
544 expression within the bronchial mucosa. *Am J Respir Crit Care Med* 1996; 153:551-6.

- 545 58. Hamid Q, Tulic MK. New insights into the pathophysiology of the small  
546 airways in asthma. *Ann Thorac Med* 2007; 2:28-33.
- 547 59. FitzGerald JM, Shahidi N. Achieving asthma control in patients with moderate  
548 disease. *J Allergy Clin Immunol* 2010; 125:307-11.
- 549 60. Barnes PJ. Inhaled glucocorticoids for asthma. *N Engl J Med* 1995; 332:868-75.
- 550 61. Bousquet J, Wenzel S, Holgate S, Lumry W, Freeman P, Fox H. Predicting  
551 response to omalizumab, an anti-IgE antibody, in patients with allergic asthma. *Chest* 2004;  
552 125:1378-86.
- 553 62. Jabara HH, Ahern DJ, Vercelli D, Geha RS. Hydrocortisone and IL-4 induce  
554 IgE isotype switching in human B cells. *J Immunol* 1991; 147:1557-60.
- 555 63. Holgate S, Smith N, Massanari M, Jimenez P. Effects of omalizumab on  
556 markers of inflammation in patients with allergic asthma. *Allergy* 2009; 64:1728-36.
- 557 64. Busse WW. Anti-immunoglobulin E (omalizumab) therapy in allergic asthma.  
558 *Am J Respir Crit Care Med* 2001; 164:S12-7.
- 559 65. Strunk RC, Bloomberg GR. Omalizumab for asthma. *N Engl J Med* 2006;  
560 354:2689-95.
- 561 66. Bousquet J, Cabrera P, Berkman N, Buhl R, Holgate S, Wenzel S, et al. The  
562 effect of treatment with omalizumab, an anti-IgE antibody, on asthma exacerbations and  
563 emergency medical visits in patients with severe persistent asthma. *Allergy* 2005; 60:302-8.  
564  
565  
566

**TABLE 1.** SUBJECT CHARACTERISTICS FOR UNCONTROLLED ASTHMA, AR AND HEALTHY CONTROLS

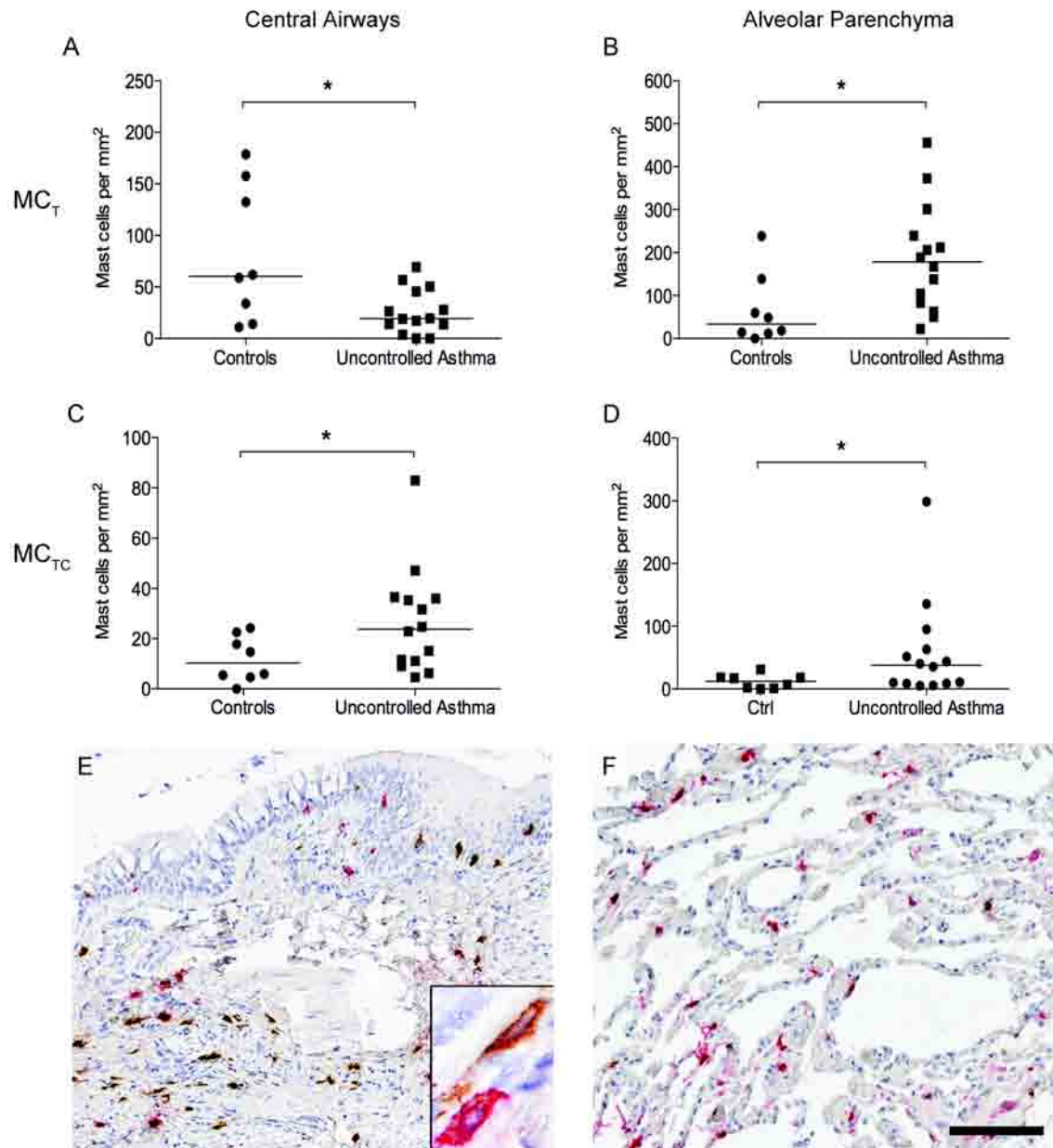
Subject	Asthma / Controls	Gender (M/F)	Age (yrs)	FEV <sub>1</sub> (L)	FEV <sub>1</sub> % of pred.	PD20 (µg)	Atopy (y/n)	Rhinitis (y/n)	ICS/day (µg)	ACT score	Smoking (y/n)
1	control	M	29	5.11	116.4	>2000	n	n	0	N/A	n
2	control	F	23	3.68	95.4	>2000	n	n	0	N/A	n
3	control	M	39	4.91	109.8	>2000	n	n	0	N/A	n
4	control	M	23	5.38	113.5	>2000	n	n	0	N/A	n
5	control	F	23	3.71	100.7	>2000	n	n	0	N/A	n
6	control	F	22	2.38	72.1	>2000	n	n	0	N/A	n
7	control	F	23	3.53	95.1	>2000	n	n	0	N/A	n
8	control	F	21	3.25	89.4	>2000	n	n	0	N/A	n
9	rhinitis	M	22	3.98	108.7	>2000	y (p)	y	0 <sup>a</sup>	N/A	n
10	rhinitis	F	25	2.98	96.3	>2000	y (p)	y	0	N/A	n
11	rhinitis	F	36	3.21	103.8	>2000	y (p)	y	0	N/A	n
12	rhinitis	M	59	3.01	138.0	>2000	y (p)	y	0 <sup>a</sup>	N/A	n
13	rhinitis	F	24	3.42	96.0	>2000	y (p)	y	0	N/A	n
14	rhinitis	F	24	3.21	105.0	>2000	y (p)	y	0	N/A	n
15	rhinitis	M	29	4.69	114.6	>2000	y (s)	y	0	N/A	n <sup>b</sup>
16	rhinitis	F	31	3.68	109.3	>2000	y (p)	y	0	N/A	n
17	asthma	M	45	4.25	104.2	243.4	y (p)	y	400	13	n
18	asthma	M	59	3.17	81.0	672.0	y (p)	y	800	19	n
19	asthma	M	27	3.86	81.7	>2000	y (p)	n	800	20	n
20	asthma	M	22	3.58	79.9	251.5	y (p)	y	400	21	n
21	asthma	M	58	2.80	63.3	68.0	y (p)	y	400	13	n
22	asthma	M	30	4.01	90.1	1620.0	y (p)	y	800	18	n
23	asthma	F	50	2.14	74.7	69.3	y (p)	y	800	16	n
24	asthma	F	24	2.35	72.5	381.9	y (s)	y	1200	20	n
25	asthma	F	50	2.07	72.3	138.2	y (p)	y	800	17	n <sup>c</sup>
26	asthma	F	52	2.37	81.5	279.1	y (p)	y	800	14	n
27	asthma	M	38	4.64	108.0	541.0	y (p)	y	1200	17	n
28	asthma	M	37	4.14	96.0	500.0	y (p)	y	400	18	n <sup>d</sup>
29	asthma	M	25	3.35	73.3	59.5	y (p)	y	800	18	n
30	asthma	F	42	2.55	81.8	326.0	y (s)	y	800	11	n

M = male, F = female, FEV<sub>1</sub> = forced expiratory volume in 1 second, PD20 = provocative dose (metacholine) producing a fall in FEV<sub>1</sub> of 20 %, s = seasonal, p = perennial, ICS = Inhaled glucocorticosteroid, ACT = asthma control test, y = yes, n = no, <sup>a</sup> nasal corticosteroid p.r.n., <sup>b</sup> ex-smoker since 2003, <sup>c</sup> ex-smoker since 1985, <sup>d</sup> ex-smoker since 2001

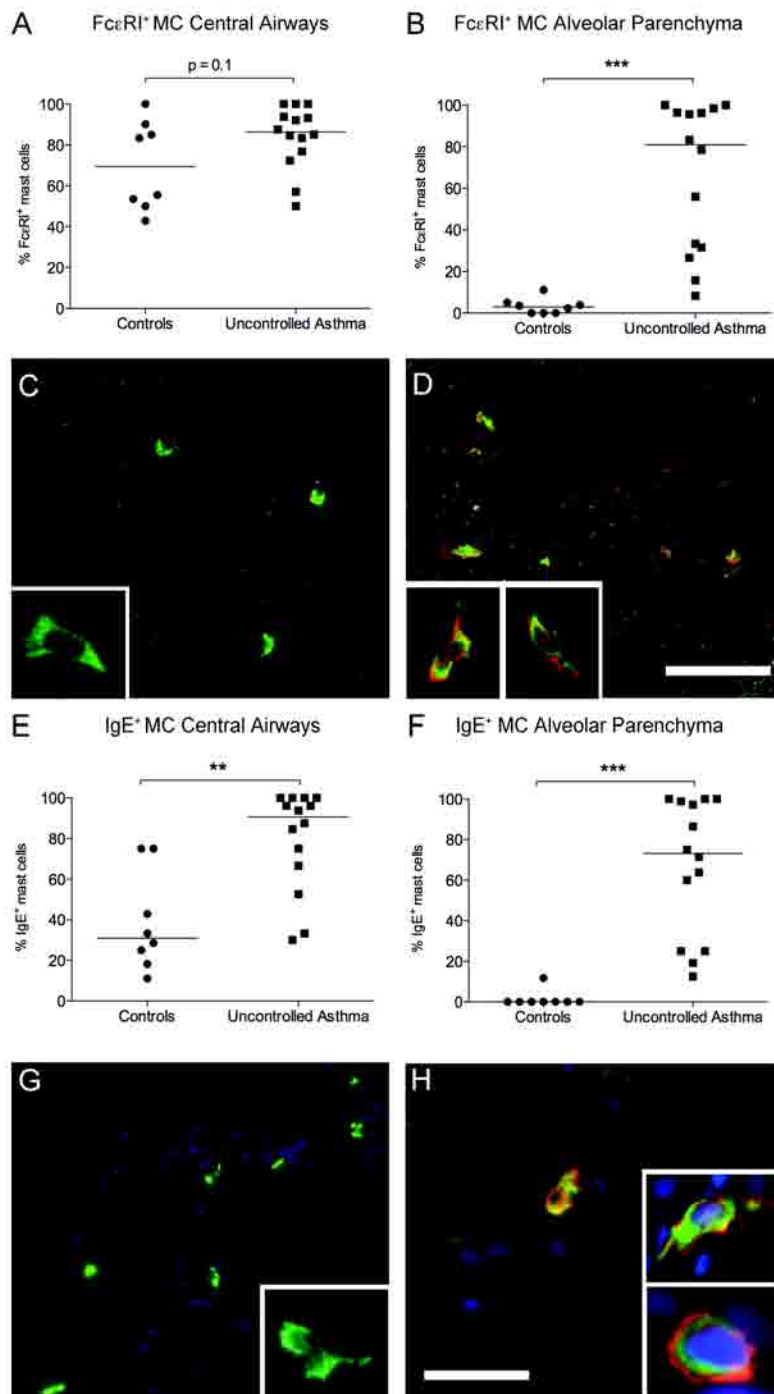
**TABLE 2.** MAST CELL DENSITIES AND EXPRESSION OF FcεRI AND MAST CELL BOUND IgE IN PATIENTS WITH UNCONTROLLED ASTHMA AND AR

		Central Airways			Alveolar Parenchyma		
<i>Uncontrolled Asthma</i>		Controls <sup>a</sup> (n = 8)	Uncontrolled asthma (n=14)	p-value	Controls (n = 8)	Uncontrolled asthma (n=14)	p-value
Density (per mm <sup>2</sup> )							
	Total	69 (16-185)	40 (12-109)	0.2	53 (0-241)	210 (59-591)	0.006
	MC <sub>T</sub>	60 (11-179)	19 (0-69)	0.05	33 (0-239)	178 (22-456)	0.01
	MC <sub>TC</sub>	10 (0-24)	24 (5-83)	0.05	12 (0-31)	38 (5-299)	0.04
Expression (%)							
	FcεRI	69 (43-100)	86 (50-100)	0.1	3 (0-11)	81 (8-100)	0.0002
	IgE	31 (11-75)	91 (30-100)	0.003	0 (0-12)	73 (13-100)	0.0001
<i>AR</i>							
Density (per mm <sup>2</sup> )		Controls <sup>b</sup> (n=8)	AR (n=8)	p-value	Controls (n=8)	AR (n=8)	p-value
	Total	79 (31-155)	83 (65-319)	0.7	61 (0-179)	79 (32-186)	0.2
	MC <sub>T</sub>	72 (10-155)	66 (14-265)	1.0	46 (0-149)	64 (0-180)	0.6
	MC <sub>TC</sub>	15 (0-28)	21 (8-61)	0.3	10 (0-30)	18 (6-68)	0.2
Expression (%)							
	FcεRI	73 (40-100)	76 (40-100)	0.6	0 (0-29)	0 (0-19)	0.8
	IgE	13 (0-50)	30 (0-51)	0.2	0 (0-17)	11 (0-37)	0.02

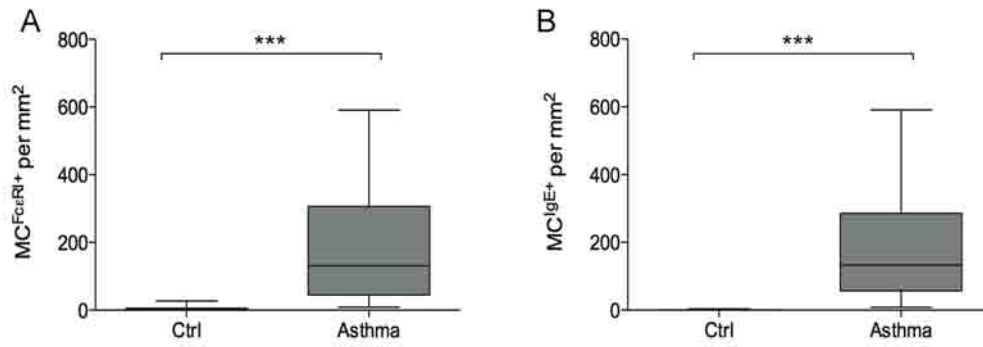
Data presented as median (range). <sup>a</sup> Paraformaldehyde fixated paraffin embedded control tissue, <sup>b</sup> PLP fixated cryo control tissue. n = number of patients in the group. A mean value per each patient was calculated from 2 bronchial and 2 transbronchial biopsies, respectively. The difference between the control group and disease group were then calculated using Mann-Whitney test. Result is considered significant for  $p \leq 0.05$ .



**Figure 1.** MC<sub>T</sub> and MC<sub>TC</sub> in central airways (A, C) and alveolar parenchyma (B, D) in uncontrolled asthma compared to healthy controls. E (central airways) and F (alveolar) show representative micrographs from asthmatic patients, double stained for MC<sub>T</sub> and MC<sub>TC</sub>. Scale bar: E-F = 100 μm. Inset in (E) represents a close-up image (600×) of neighboring MC<sub>TC</sub> and MC<sub>T</sub> cells. Horizontal bars indicates median value.



**Figure 2.** Mast cell expression (%) of FcεRI (A-B), panel C-D show representative micrographs of FcεRI<sup>+</sup> mast cells in alveolar parenchyma from controls (C) and asthmatic patients (D). E-F show mast cell bound IgE (%), panel G-H show representative micrographs of IgE<sup>+</sup> mast cells in alveolar parenchyma from controls (G) and asthmatic patients (H). Scale bar: C-D, G = 50 μm and H = 25 μm. Insets represents image (600×) of mast cells double positive for tryptase and FcεRIα or IgE. Horizontal bars indicates median value.



**Figure 3.** Density of mast cells expressing FcεRIα (A) and mast cell bound IgE (B) in alveolar parenchyma in uncontrolled asthma compared to healthy controls. Data are presented as box and whiskers.