



# LUND UNIVERSITY

## **Mycobacteria Bypass Mucosal NF- $\kappa$ B Signalling to Induce an Epithelial Anti-Inflammatory IL-22 and IL-10 Response.**

Lutay, Nataliya; Håkansson, Gisela; Alaridah, Nader; Hallgren, Oskar; Westergren-Thorsson, Gunilla; Godaly, Gabriela

Published in:  
PLoS ONE

DOI:  
[10.1371/journal.pone.0086466](https://doi.org/10.1371/journal.pone.0086466)

2014

[Link to publication](#)

### *Citation for published version (APA):*

Lutay, N., Håkansson, G., Alaridah, N., Hallgren, O., Westergren-Thorsson, G., & Godaly, G. (2014). Mycobacteria Bypass Mucosal NF- $\kappa$ B Signalling to Induce an Epithelial Anti-Inflammatory IL-22 and IL-10 Response. *PLoS ONE*, 9(1), Article e86466. <https://doi.org/10.1371/journal.pone.0086466>

Total number of authors:  
6

### **General rights**

Unless other specific re-use rights are stated the following general rights apply:  
Copyright and moral rights for the publications made accessible in the public portal are retained by the authors and/or other copyright owners and it is a condition of accessing publications that users recognise and abide by the legal requirements associated with these rights.

- Users may download and print one copy of any publication from the public portal for the purpose of private study or research.
- You may not further distribute the material or use it for any profit-making activity or commercial gain
- You may freely distribute the URL identifying the publication in the public portal

Read more about Creative commons licenses: <https://creativecommons.org/licenses/>

### **Take down policy**

If you believe that this document breaches copyright please contact us providing details, and we will remove access to the work immediately and investigate your claim.

LUND UNIVERSITY

PO Box 117  
221 00 Lund  
+46 46-222 00 00

# Mycobacteria Bypass Mucosal NF- $\kappa$ B Signalling to Induce an Epithelial Anti-Inflammatory IL-22 and IL-10 Response

Nataliya Lutay<sup>1</sup>, Gisela Håkansson<sup>1</sup>, Nader Alaridah<sup>1</sup>, Oskar Hallgren<sup>2</sup>, Gunilla Westergren-Thorsson<sup>3</sup>, Gabriela Godaly<sup>1\*</sup>

**1** Division of Laboratory Medicine, Department of MIG, Lund University, Lund, Sweden, **2** Division of Clinical Sciences, Department of Respiratory Medicine and Allergology, Lund University, Lund, Sweden, **3** Division of Vascular- and Respiratory Research Unit of Lung Biology, Department of Experimental Medical Science, Lund University, Lund, Sweden

## Abstract

The mechanisms by which mycobacteria subvert the inflammatory defence to establish chronic infection remain an unresolved question in the pathogenesis of tuberculosis. Using primary epithelial cells, we have analysed mycobacteria induced epithelial signalling pathways from activation of TLRs to cytokine secretion. *Mycobacterium bovis* bacilli Calmette-Guerin induced phosphorylation of glycogen synthase kinase (GSK)3 by PI3K–Akt in the signalling pathway downstream of TLR2 and TLR4. Mycobacteria did not suppress NF- $\kappa$ B by activating the peroxisome proliferator-activated receptor  $\gamma$ . Instead the pro-inflammatory NF- $\kappa$ B was bypassed by mycobacteria induced GSK3 inhibition that promoted the anti-inflammatory transcription factor CREB. Mycobacterial infection did not thus induce mucosal pro-inflammatory response as measured by TNF $\alpha$  and IFN $\gamma$  secretion, but led to an anti-inflammatory IL-10 and IL-22 production. Apart from CREB, MAP3Ks p38 and ERK1/2 activated the transcription factor AP-1 leading to IL-6 production. Interestingly, blocking of TLR4 before infection decreased epithelial IL-6 secretion, but increased the CREB-activated IL-10 production. Our data indicate that mycobacteria suppress epithelial pro-inflammatory production by suppressing NF- $\kappa$ B activation thereby shifting the infection towards an anti-inflammatory state. This balance between the host immune response and the pathogen could determine the outcome of infection.

**Citation:** Lutay N, Håkansson G, Alaridah N, Hallgren O, Westergren-Thorsson G, et al. (2014) Mycobacteria Bypass Mucosal NF- $\kappa$ B Signalling to Induce an Epithelial Anti-Inflammatory IL-22 and IL-10 Response. PLoS ONE 9(1): e86466. doi:10.1371/journal.pone.0086466

**Editor:** Patricia T. Bozza, Fundação Oswaldo Cruz, Brazil

**Received:** June 6, 2013; **Accepted:** December 13, 2013; **Published:** January 28, 2014

**Copyright:** © 2014 Lutay et al. This is an open-access article distributed under the terms of the Creative Commons Attribution License, which permits unrestricted use, distribution, and reproduction in any medium, provided the original author and source are credited.

**Funding:** This study was supported by a Research Scientist Grant from the Swedish Medical Research Council (2005-7364, 7364, 11550); the Crafoord Foundation; the Heart and Lung Foundation; Evy and Gunnar Sandberg Foundation and the Medical Faculty of Lund University, Sweden. The funders had no role in study design, data collection and analysis, decision to publish, or preparation of the manuscript.

**Competing Interests:** The authors have declared that no competing interests exist.

\* E-mail: Gabriela.godaly@med.lu.se

## Introduction

Successful pathogen *Mycobacterium tuberculosis* (*M. tuberculosis*) use intricate strategy to evade the immune response. This pathogen invades the epithelial cells that cover the alveolar space of the lung and modulate or fine-tune the immune responses to produce a selective cytokine response [1–5]. The first phagocytes to be attracted to the infectious foci are the neutrophils [1,2,6,7], followed by monocytes, and these leukocytes cooperate in the elimination of mycobacteria [8]. The extent of epithelial cytokine secretion may lead to tissue damage and breakdown of extracellular matrix, thus favouring bacterial persistence and facilitating mycobacterial transmission [9,10]. However, perturbed defence in immune-compromised patients can tilt this balance leading to active disease [11]. These initial innate events, depending on the magnitude of the host immune responses, could thus determine the outcome of mycobacterial infection.

Epithelial cells express molecular pattern associated receptors, such as the Toll like receptors (TLRs) that interact with mycobacteria [12]. TLR2 expression increases upon mycobacterial infection of alveolar epithelium and blocking of TLR2 decreases cytokine responsiveness [4]. Mycobacteria express multiple ligands that bind to members of the TLR family, especially TLR2 and TLR4. Mycobacterial products, such as

lipoarabinomannan (LAM) and the cell wall-associated and secreted 19-kDa glycolipoprotein, activate TLR signalling [4,6,13,14]. TLR2 and TLR4 are also known to modulate the activation of peroxisome proliferator-activated receptor (PPAR) $\gamma$  [15] that mycobacteria utilize to affect the NF- $\kappa$ B activation [16,17]. Ligand binding to TLR initiates a signalling cascade through a MyD88-dependent and/or a MyD88-independent gene expression [18]. The MyD88-dependent activation leads to a pro-inflammatory cytokine response by the IRAK-NF- $\kappa$ B pathway, but also to chromatin remodelling by the MAPK kinases that regulates extracellular signal-regulated kinase 1/2 (ERK1/2), p38 proteins and c-Jun N-terminal kinase (JNK) [18]. The cytosolic domains of several TLRs bear also a conserved YxxM PI3K binding motif and phosphorylation of Akt, a downstream kinase activated by PI3K, is detected upon TLR stimulation [19]. Activation of Akt or p38 inactivates the glycogen synthase kinase 3 (GSK3) that is found further down the signalling pathway [20]. GSK3 is constitutively active in resting cells leading to the pro-inflammatory NF- $\kappa$ B transcription, but p38/Akt phosphorylation of GSK3 switches the transcriptional activity to cAMP response element-binding protein (CREB) [21]. TLR activation can thus either lead to a pro-inflammatory cytokine response by activation

of NF- $\kappa$ B pathway, or an anti-inflammatory CREB-related cytokine response.

The initial events of mycobacterial infections are not clear. The first surface that the immobile bacterium will encounter after inhalation into the lungs would most likely be epithelial. Several groups have demonstrated that *M. tuberculosis* invades and survives within human type II alveolar epithelial cells [1,22,23]. Previous research revealed that the epithelia remain unresponsive to the infection until the third day, when the cells secreted a distinct pattern of cytokines [4,5]. There are conflicting reports regarding the activation of NF- $\kappa$ B by pathogenic mycobacteria. In the present study, we have analysed mycobacteria induced epithelial signalling pathways from activation of TLRs to cytokine secretion. Our data indicate that mycobacteria avoid epithelial pro-inflammatory production by bypassing NF- $\kappa$ B activation thus balancing the infection towards an anti-inflammatory state.

## Materials and Methods

### Ethical Statement

The Swedish Research Ethical Committee in Lund (FEK 413/2008) approved the isolation of the bronchial material for primary cell cultures. Bronchial material for primary cell cultures was obtained from lung explant from healthy donors with irreversible brain damage and with no history of lung disease. Lungs were to be used for transplantation but could instead be included in this study as no matched recipients were available at that moment. Written consent was obtained from their closest relatives.

### Bacterial strains and growth conditions

*Mycobacterium bovis* bacillus Calmette-Guerin (BCG) Montreal strain containing the pSMT1 shuttle plasmid was prepared as previously described [24]. Briefly, the mycobacteria were grown in Middlebrook 7H9 culture medium, supplemented with 10% ADC enrichment (Becton Dickinson, Oxford, UK) and hygromycin (50 mg/l; Roche, Lewes, UK), the culture was washed twice with sterile PBS, and re-suspended in media again and then dispensed into vials. Glycerol was added to a final concentration of 25% and the vials were frozen at  $-80^{\circ}\text{C}$ . Prior to each experiment, a vial was defrosted, added to 9 ml of 7H9/ADC/hygromycin medium, and incubated with shaking for 72 h at  $37^{\circ}\text{C}$ . Mycobacteria were then centrifuged for 10 minutes at  $3000\times g$ , washed twice with sterile PBS, and re-suspended in 2 ml of sterile PBS.

### Cell Culture

Bronchial tissue was dissected from lungs and kept in Dulbecco's Modified Eagle Medium supplemented with gentamicin, penicillin, streptomycin, Fungizone and 10% fetal calf serum (FCS) (all from Gibco, Paisley, UK) until further isolation. After removing intraluminal mucus and surrounding tissue, bronchi were digested in 0.1% Protease (Sigma St. Louis, MO) prepared in Minimum Essential Medium Eagle Spinner Modification (Sigma-Aldrich) supplemented with gentamicin, penicillin, streptomycin and Fungizone for 24 hours. Bronchial epithelial cells (HBEC) were recovered by repeated intraluminal rinsing with Dulbecco's Modified Eagle Medium supplemented with gentamicin, penicillin, streptomycin, Fungizone and 10% FCS. Cells were filtered through a 100  $\mu\text{m}$  strainer (Falcon, Becton Dickinson) and seeded in cell culture flasks coated with 1% Collagen-1 (PureCol, Inamed Biomaterial, Fremont, CA) in Bronchial Epithelial Cell Growth Medium (Clonetics). The following day cells were thoroughly washed with a medium change every other day. Experiments were performed in passage 3 and 4.

### Infection and treatments of the cells

For the infection experiments, primary cells were grown in 6-well plates ( $2.0\times 10^5$  cells/well; Fisher Scientific, UK), infected with BCG (one bacterium per cell; 1 MOI) or phenol purified LPS (1 ng/ml; Sigma-Aldrich), lipoarabinomannan (LAM, 1  $\mu\text{g}/\text{ml}$ , Lionex GmbH) or 19-kDa glycolipoprotein (1  $\mu\text{g}/\text{ml}$ , Lionex GmbH) at  $37^{\circ}\text{C}$  for up to three days. For the blocking experiments, monoclonal mouse anti-human TLR2 or monoclonal mouse anti-human TLR4 antibodies (R&D Systems) 10  $\mu\text{g}/\text{ml}$  were added to the epithelial cells 30 minutes before the addition of bacteria.

For cytokine analysis, the samples were collected after 0, 6, 24, 48 and 72 hours and for western blot analysis, the cells were detached by versene (140 mM NaCl, 2.4 mM KCl, 8 mM  $\text{Na}_2\text{HPO}_4$ , 1.6 mM  $\text{KH}_2\text{PO}_4$ , 0.5 mM EDTA, pH 7.2) and washed with PBS.

To investigate whether epithelial cells survive mycobacterial infection, we analysed cell viability by trypan blue exclusion assay according to manufactures instructions (Sigma Aldrich, Germany). For analysis of bacterial survival within the epithelial cells, infected epithelial cells were lysed in 300  $\mu\text{l}$  of sterile distilled water for 15 minutes. 100  $\mu\text{l}$  of the suspension was plated on Middlebrook 7H10 supplemented with 10% OADC Enrichment (Becton Dickinson, Oxford, UK) and grown for 3 weeks.

### Western Blot

The primary cells were washed with PBS containing 0.2 mM phenylmethylsulfonyl fluoride (PMSF), 1  $\mu\text{g}/\text{ml}$  PepstatinA, 5  $\mu\text{g}/\text{ml}$  Leupeptin (Sigma-Aldrich) and complete protease inhibitor cocktail (Roche Diagnostics, Mannheim, Germany) and lysed with modified Mammalian Protein Extraction Reagent (M-PER) solution (50 mM HEPES, 150 mM NaCl, 2 mM EDTA, 50 mM ZnCl<sub>2</sub>, 1% NP-40, 0.1% deoxycholate, 0.1% SDS; Pierce) containing phosphatase (1:10) and the complete protease inhibitor cocktail (1:25). The cells were then placed on a shaker for 5 minutes, collected and centrifuged at  $10,000\times g$  for 5 minutes. Protein samples were used immediately for western blot analysis or stored at  $-80^{\circ}\text{C}$ .

Protein levels were measured in cells treated with BCG and cells blocked for TLR2 or TLR4 with the NanoDrop<sup>TM</sup> 8000 Spectrophotometer using the Pierce 660 nm assay (Thermo Scientific). Medium alone, LPS, LAM and 19 kDa were used as controls. Protein samples were mixed with PBS, 4 $\times$  NuPAGE LDS sample buffer (Life Technologies) and 1 M DTT and incubated at  $90^{\circ}\text{C}$  for 10 minutes followed by centrifugation at  $218\times g$  for 5 minutes. Equal amounts of protein (10  $\mu\text{g}/\text{well}$ ) were loaded on a NuPAGE 4%–12% Bis-Tris Gel (Life Technologies) and separated by sodium dodecyl sulfate-PAGE. A molecular weight marker (Novex<sup>®</sup> Sharp Prestained; Life Technologies) was loaded onto each gel for protein band identification. After separation, the proteins were transferred to a polyvinylidene difluoride (PVDF) membrane (Healthcare Amersham). The membrane was then blocked with either 5% dry-milk (Santa Cruz Biotechnology, Santa Cruz, CA) or with 5% bovine serum albumin (BSA; Santa Cruz Biotechnology) for 1 hour on a shaker at room temperature. Membranes were then incubated on a shaker overnight at  $4^{\circ}\text{C}$  with rabbit anti-human p-GSK-3 $\alpha/\beta$  (1:500; AF1590, R&D systems, Denmark), GSK-3 $\alpha/\beta$  (1:250; AF2157, R&D systems), p-CREB (1:1000; #9198 Cell Signalling Technology, Inc., Danvers, MA), I $\kappa$ B $\alpha$  (1:1000; #4812 Cell Signalling Technology), ERK1/2 (0.1  $\mu\text{g}/\text{mL}$ , AF1018 R&D systems), PPAR $\gamma$  (1:1000; NBP1-61399 Novus Biologicals), GAPDH (1:500; sc-25778 Santa Cruz Biotechnology) or mouse anti-human NF- $\kappa$ B p65 (1:200; sc-8008 Santa Cruz Biotechnol-

ogy, Heidelberg, Germany), or  $\beta$ -actin (1:10,000; Sigma-Aldrich) primary antibody. Incubation was followed by washing 3 $\times$ 5 minutes with Tris-buffered saline (TBS)-Tween 20 and 1 $\times$ 5 minutes TBS. The membrane was then incubated with goat-anti-rabbit IgG HRP (1:2000; Santa Cruz Biotechnology) IgG secondary antibody or with rabbit anti-mouse IgG<sub>1</sub> HRP (1:4000; Dako) secondary antibody for 2 hours on a shaker at room temperature followed by washing with TBS-Tween 20 and TBS. The housekeeping protein GAPDH and  $\beta$ -actin were used to confirm equal loading on the wells. The membrane was developed using Amersham ECL Plus Western Blotting Detection Reagents (GE Healthcare, Little Chalfont, UK) and GelDoc equipment (Bio-Rad Laboratories). Blot intensity was quantified using ImageJ software 28 and normalized against GAPDH or  $\beta$ -actin. If required, membranes were stripped with Restore Western Blot Stripping Buffer (Pierce, Rockford, IL), blocked and re-probed with new antibodies.

### Phospho-kinase array

Protein phosphorylation was examined with the Proteome Human Phospho-Kinase Array Kit (Proteome Prolifer Array, R&D Systems, Abingdon, Oxford, UK), which is a membrane based sandwich immunoassay. The assay was performed according to the manufacturers' instructions. Briefly, total cell extracts were prepared from stimulated near-confluent cultures of normal human primary epithelial cells grown in 6-well plates. Untreated cells were used as control. The cell extracts containing 500  $\mu$ g of total protein were incubated with the Human Phospho-Kinase Array. The proteins present in a lysate sample were captured by discrete antibodies printed in duplicate across the nitrocellulose membranes. The array was washed 3 $\times$  with 1X Wash Buffer for 10 minutes on a rocking platform shaker to remove unbound proteins. Washing was followed by incubation with a cocktail of biotinylated detection antibodies (monoclonal anti-human of phosphorylated Akt (S473), Akt (T308), AMPK alpha1 (T174), AMPK alpha2 (T172), beta-Catenin, Chk-2 (T68), c-Jun (S63), CREB (S133), EGF R (Y1086), eNOS (S1177), ERK1/2 (T202/Y204, T185/Y187), FAK (Y397), Fgr (Y412), Fyn (Y420), GSK-3 alpha/beta (S21/S9), Hck (Y411), HSP27 (S78/S82), HSP60, JNK pan (T183/Y185 T221/Y223), Lck (Y394), Lyn (Y397), MSK1/2 (S376/S360), p27 (T198), p38 alpha (T180/Y182), p53 (S15), p53 (S392), p53 (S46), p70 S6 Kinase (T421/S424), PDGF R beta (Y751), PLC gamma-1 (Y783), PRAS40 (T246), Pyk2 (Y402), RSK1/2/3 (S380/S386/S377), Src (Y419), STAT2 (Y689), STAT3 (S727), STAT3 (Y705), STAT5a (Y694), STAT5a/b (Y694/Y699), STAT5b (Y699), STAT6 (Y641), TOR (S2448), WNK-1 (T60), Yes (Y426) and subsequent application of streptavidin-HRP conjugate. The signals were detected with the ECL Plus Western Blotting Detection System (GE Healthcare). Developed signals were analyzed using ImageJ 1.45s analysis software.

### Immunofluorescence microscopy

Expression of p-CREB and NF- $\kappa$ B in primary cells was detected by immunofluorescence staining. After blocking and infection for 72 hours the cells were fixed with 3.7% formaldehyde and then permeabilized in a mixture of PBS, 0.25% Triton X-100 and 5% fetal calf serum (FCS) for 30 minutes shaking at room temperature. Specimens were then incubated for 2 hours shaking at room temperature with PBS, 5% FCS, and the primary anti-rabbit p-CREB-1 (Ser133) or anti-mouse NF- $\kappa$ B p65 antibodies (1:50; Santa Cruz Biotechnology). The cells were washed two times with PBS at 400 $\times$ g for 5 minutes and then incubated with goat anti-rabbit or rabbit anti-mouse secondary antibody (1:100; Invitrogen)

in PBS and 5% FCS for 1 hour (shaking in dark) in room temperature. After additional washing the cells was stained with 1  $\mu$ g/ml of 4', 6-diamidino-2-phenylindole (DAPI) dissolved in PBS for 5 minutes in dark and then washed again with PBS. Finally the slides were mounted in fluoromount Aqueous Mounting Medium (Sigma Aldrich, F4680). The slides were examined with an inverted Nikon microscope (Nikon Diaphot 300) equipped with a 100 W mercury lamp (Osram, Berlin, Germany) and Ploempac with the filter set for fluorescein isothiocyanate and BioRad MRC 1024, controlled via LaserSharp (version 5.2 for PC/Windows) and further examined with the LSM 510 DUO confocal equipment with LSM software version 4.2 SP1 (Carl Zeiss, Jena, Germany). Sections incubated without primary or secondary antibody were used as negative controls to verify the lack of auto-fluorescence and unspecific secondary antibody staining.

### ELISA

IL-6 (D6050), TNF $\alpha$  (DTA00C), IFN $\gamma$  (DIF50), IL-10 (D1000B) and IL-22 (D2200) secretion by the infected cells were quantified in supernatants by Human Quantikine ELISA Kits (R&D Systems, Oxon, UK) according to manufactures instructions. NF- $\kappa$ B (EK1111) and AP-1 (c-Jun, EK1041) were quantified with nuclear extraction kits containing ELISA-kit according to manufactures instructions (Affymetrix Panomics, UK).

### Statistics

The statistical program used was SigmaStat, version 3.5, for Windows XP. The statistical difference between two groups was investigated by Mann-Whitney test. Multiple comparisons were done by one-way Analysis of Variance followed by Bonferroni test or Dunnett's test (\*\*P $\leq$ 0.001, \*P<0.01, \*P<0.05, ns = non significant).

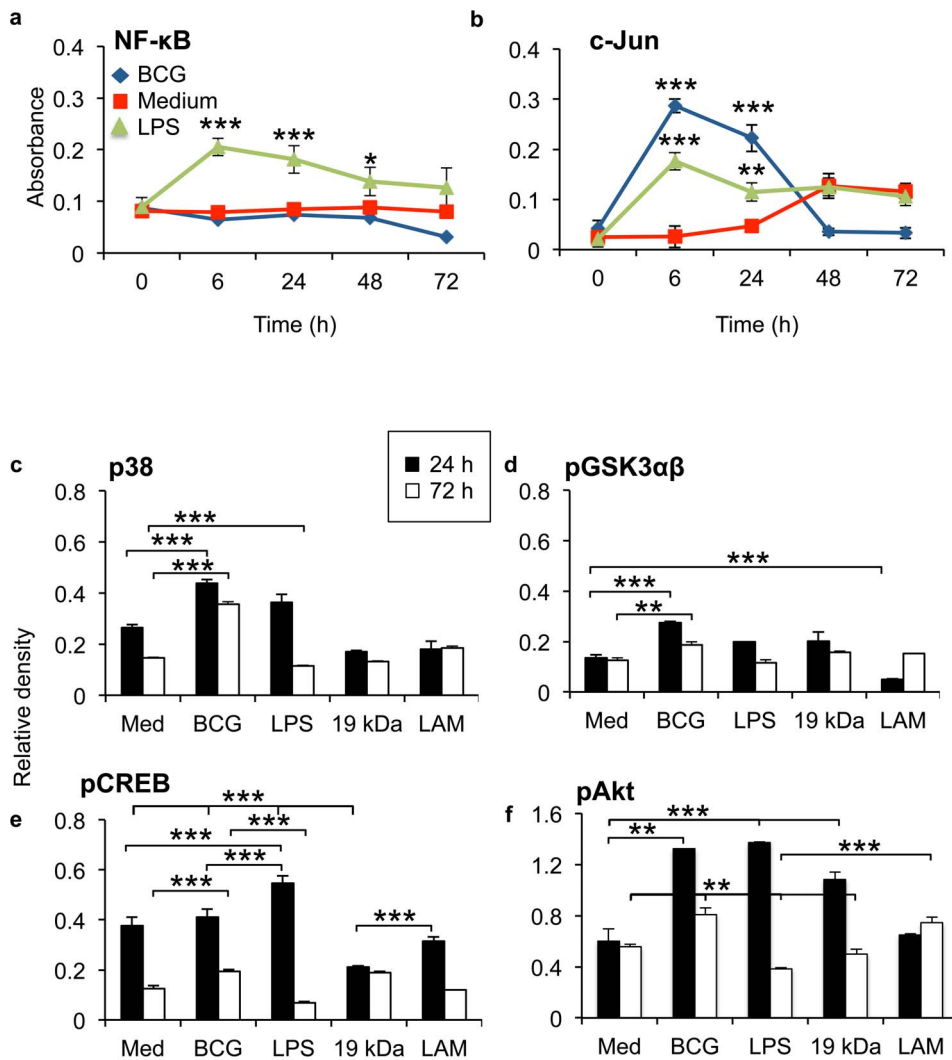
## Results

### Mycobacteria suppress NF- $\kappa$ B and c-Jun

We used a low infection dose of 1:1 (bacterium:cell) [25,26] and analysed alveolar nuclear extracts for NF- $\kappa$ B and c-Jun by ELISA. BCG at low MOI was shown to invade and survives in alveolar epithelial cells three days after infection without affecting epithelial viability (Figures S1 and S2). The TLR4 agonist LPS was used as a control. Infection of primary epithelial cells did not induce NF- $\kappa$ B activation during the three days of infection (Figure 1a). However, mycobacterial infection induced an early activation of c-Jun proteins that was suppressed two days after infection (Figure 1b). LPS induced an early NF- $\kappa$ B activation that was significantly higher than medium control and BCG up to 48 hours after addition to primary epithelial cells. Interestingly, BCG induced significantly higher c-Jun protein activation at 6 hours than LPS (p = 0.0177). We could confirm that BCG at low MOI invades and survives in primary epithelial cells [5,27] three days after infection (Figure S3).

### Mycobacteria inactivates GSK3 $\alpha\beta$ signalling pathways

GSK3 consist of the isoforms  $\alpha$  and  $\beta$ . The un-phosphorylated form of GSK3 promotes NF- $\kappa$ B activation, while phosphorylation of GSK3 by p38 and Akt promotes CREB anti-inflammatory activation. To investigate mycobacteria induced signalling pathways in primary epithelial cells, we analysed the GSK3 $\alpha\beta$ -pathway by Phospho-kinase array (Figure 1c-e). LAM and 19 kDa were used as controls for mycobacterial virulence factors and are known to signal through TLR2 [13,14], while LPS is a known TLR4 ligand. In the beginning of infection, live mycobacteria, induced



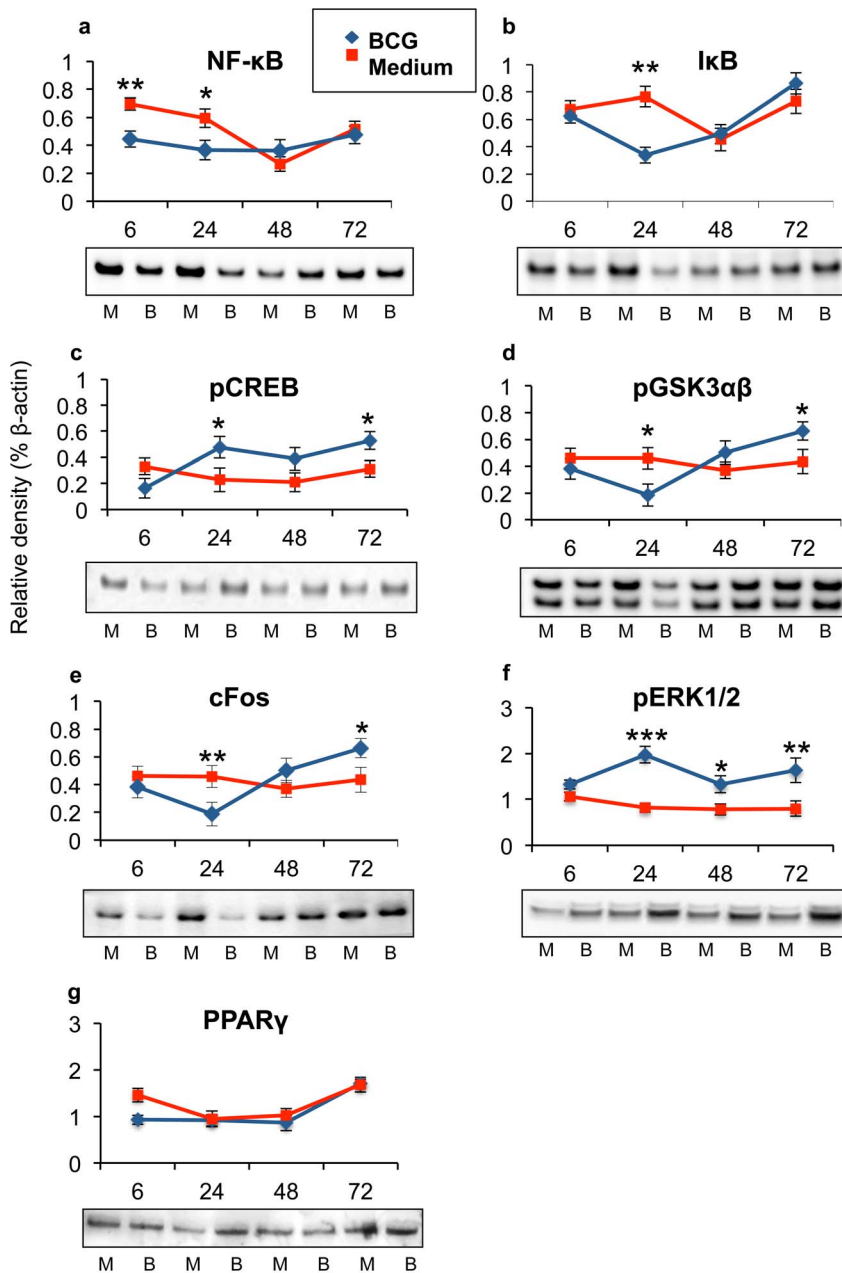
**Figure 1. Mycobacteria bypass epithelial NF- $\kappa$ B signalling.** (a) Infection of primary epithelial cells did not induce NF- $\kappa$ B activation quantified by ELISA, but an early activation of c-Jun proteins in epithelial cells was observed. (b) Epithelial GSK3 $\alpha\beta$ -pathway was analysed by Phospho-kinase array upon mycobacteria infection. In the beginning of infection, live mycobacteria, the virulence factors LAM and 19 kDa, and the TLR4 agonist LPS, induced comparable induction of p38, pAkt and pGSK3 $\alpha\beta$ . During the first 24 h, LPS induced higher increase of pCREB protein levels than mycobacteria ( $p = 0.0017$ ). Third day of infection, mycobacteria significantly increased epithelial pCREB compared to medium control ( $p = 0.0357$ ) or LPS ( $p = 0.0089$ ). Epithelial stimulation with LAM induced an increase in pGSK3 $\alpha\beta$  and pAkt phosphorylation ( $p = 0.001$  respectively  $p = 0.0196$ ) during the later stages of infection compared to the early time-point. Generally, mycobacteria induced a more persistent increase of the investigated transcription factors three days after infection in primary epithelial cell than the controls LPS, 19 kDa and LAM. Data are presented as mean  $\pm$  SEM of three separate experiments; \*\* $p < 0.01$  and \*\*\* $p < 0.001$ . doi:10.1371/journal.pone.0086466.g001

higher induction of p38 and pGSK3 $\alpha\beta$  than the virulence factor 19 kDa and the TLR4 agonist LPS (Figure 1c–d). Interestingly, mycobacterial virulence factor LAM significantly down-regulated pGSK3 $\alpha\beta$  after 24 hours of stimulation (Figure 1d). Mycobacteria and LPS induced higher increase of Akt than LAM and 19 kDa, but mycobacteria induced less pCREB protein levels during the first 24 hours, compared to LPS ( $p = 0.0017$ ) or medium control (not significant) (Figure 1e–f). Three days after infection there was a significant increase of pCREB in mycobacteria infected epithelium compared to medium control ( $p = 0.0357$ ) and LPS ( $p = 0.0089$ ) (Figure 1e). Generally, mycobacteria induced a more persistent increase of the investigated transcription factors three days after infection in primary epithelial cell than the controls LPS, 19 kDa and LAM (Figure 1c–f). Interestingly, epithelial stimulation with LAM induced a late increase in pGSK3 $\alpha\beta$  and

pAkt phosphorylation ( $p = 0.001$  respectively  $p = 0.0196$ ) during the later stages of infection compared to the early time-point.

#### Mycobacteria bypass NF- $\kappa$ B activation, but activated ERK1/2 and cFos

To investigate mycobacteria induced epithelial signalling pathways further we analysed several molecules in TLR-signalling pathway by Western blotting. By comparing infected cells with uninfected cells during the investigated time-points, we could confirm that mycobacterial infection did not induce higher NF- $\kappa$ B- or I $\kappa$ B-activation (Figure 2a,b) than medium control during infection. Variations in suppression were observed during the time of infection. Mycobacteria suppressed epithelial I $\kappa$ B and pGSK3 $\alpha\beta$  proteins at the beginning of infection (Figure 2b;  $p = 0.002$  and Figure 2d;  $p = 0.0148$  respectively), while the pGSK3 $\alpha\beta$  and



**Figure 2. Mycobacteria modulate epithelial signalling pathways.** Several molecules in the TLR-signalling pathway were analysed by Western blotting upon mycobacterial infection. (a–b) We could confirm that mycobacterial infection did not induce NF- $\kappa$ B- or I $\kappa$ B-activation. Mycobacterial suppression of primary epithelial (b) ( $p=0.002$ ) I $\kappa$ B and (d) ( $p=0.0148$ ) pGSK3 $\alpha\beta$  proteins were mostly pronounced at 24 hours of infection. The phosphorylated forms of (c) ( $p=0.0163$ ) CREB and (d) ( $p=0.0248$ ) GSK3 $\alpha\beta$  proteins reached highest levels 72 hours after infection. (e) Mycobacterial infection increased the Fos family of AP-1 proteins, as c-Fos protein levels significantly increased 72 hours after infection ( $p=0.0038$ ). (f) Mycobacteria induced two peaks of pERK1/2 protein levels, after 24 hours ( $p<0.001$ ) and after 72 hours ( $p=0.0034$ ) of infection. (g) Epithelial cells express PPAR $\gamma$  protein, but mycobacterial infection did not significantly increase epithelial PPAR $\gamma$  amount. Data are presented as mean  $\pm$  SEM of three experiments; \* $p<0.05$ , \*\* $p<0.01$  and \*\*\* $p<0.001$ .  
doi:10.1371/journal.pone.0086466.g002

pCREB proteins reached highest levels 72 hours after infection (Figure 2c,d;  $p=0.0163$  and  $p=0.0248$  respectively). Mycobacteria affected both GSK3 isoforms similarly. Interestingly, mycobacterial infection increased the Fos family of AP-1 proteins, as c-Fos protein levels significantly increased 72 hours after infection (Figure 2e;  $p=0.0038$ ). Mycobacteria induced two peaks of pERK1/2 protein levels, after 24 hours ( $p<0.001$ ) and after 72 hours ( $p=0.0034$ ) of infection (Figure 2f). Mycobacteria were

previously reported to induce PPAR $\gamma$  in order to modulate NF- $\kappa$ B responses [16,17], but we could not observe that BCG significantly affected epithelial PPAR $\gamma$  protein concentration compared to medium control (Figure 2g). The actin loading controls are shown in the Figure S3.

### Mycobacterial infection controls epithelial cytokine production

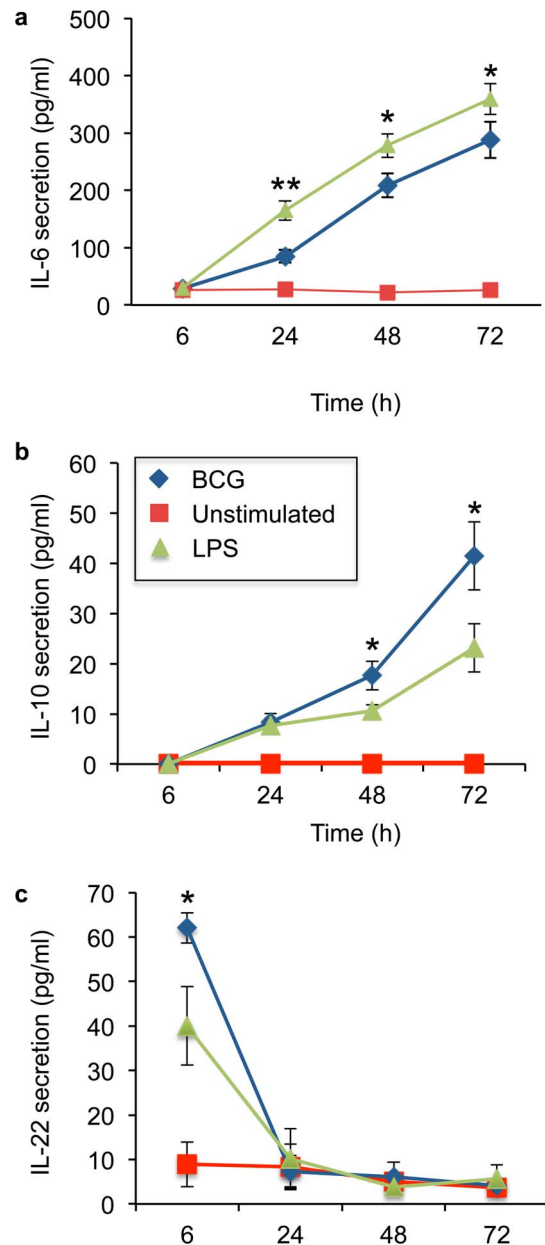
Generally, the pro-inflammatory cytokines, such as IFN $\gamma$  and TNF $\alpha$ , orchestrate innate and adaptive host immune responses, while anti-inflammatory cytokines, such as IL-10 and IL-22, confine the inflammation and postpone the generation of adaptive immunity [28]. Mycobacterial control of induced transcriptional factors was analysed as epithelial cytokine secretion from six hours up to three days after infection. Infection induced a significant IL-6 and IL-10 secretion that peaked at 72 hours (Figure 3a,b). In contrast, mycobacterial infection induced an early significant IL-22 secretion from primary epithelial cells that ended 24 hours after infection (Figure 3c). Mycobacterial infection did not induce epithelial TNF $\alpha$  or IFN $\gamma$  secretion during the studied time interval (data not shown).

### Mycobacteria regulate TLR-induced inflammatory response

TLR-induced CREB activation is important for IL-10 production [21]. To determine the impact of TLR2 and TLR4 on mycobacteria induced pro- and anti-inflammatory cytokine production, the receptors were blocked prior to mycobacterial three-day infection of the primary epithelial cells (Figure 4). Antibody blocking of TLR2 or TLR4 before infection decreased epithelial IL-6 secretion ( $p = 0.0011$  and  $p = 0.0047$  respectively) (Figure 4a). The blocking of TLR2 or TLR4 did not affect alveolar survival during infection (Figure S1b). LPS induced a significantly higher IL-6 response than BCG ( $p = 0.0063$ ), while 19 kDa induced a lower response compared to live mycobacteria ( $p = 0.0029$ ). Mycobacteria induced higher production of the anti-inflammatory IL-10 production than LPS ( $p = 0.0032$ ) in human primary epithelial cells (Figure 4b). Blocking of TLR4 prior to infection increased IL-10 secretion compared to unblocked infection ( $p = 0.0399$ ). Blocking with TLR2 or addition of 19-kDa to the epithelial cells did not induce a significant change in epithelial IL-10 production compared to mycobacteria.

### Mycobacteria regulates CREB through TLRs

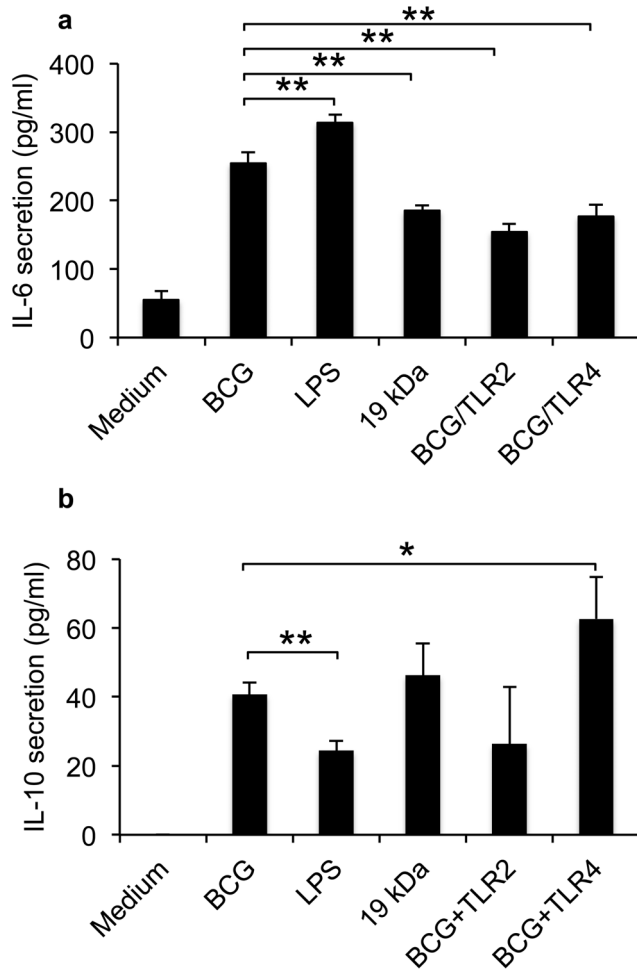
Mycobacterial infection was previously shown to increase epithelial TLR2 and TLR4 [4]. The impact of TLR2 and TLR4 were analysed by immuno-fluorescence staining of pCREB and NF- $\kappa$ B expression in primary cells (Figure 5a). Mycobacterial infection increased nuclear pCREB protein levels compared to unstimulated cells, while the expression of NF- $\kappa$ B did not increase. Blocking of TLR4 before mycobacterial infection resulted in a granular cytoplasmic pCREB distribution, similar to pCREB aggregation in 19 kDa-stimulated cells. TLR2 blocking and LAM treatment induced similar pCREB distribution as live mycobacteria. Epithelial treatment with mycobacterial virulence factor 19-kDa resulted in a granular cytoplasmic pCREB distribution, while LAM treatment induced similar pCREB distribution as live mycobacteria (Figure 5a). Further confirming our results, detection of epithelial pCREB by confocal immuno-fluorescent microscopy revealed that mycobacterial infection significantly increased pCREB expression ( $p < 0.001$ ), but NF- $\kappa$ B expression was not affected (Figure 5b). Blocking of TLR2 or TLR4 before mycobacterial infection increased pCREB expression even further ( $p = 0.0187$  and  $p < 0.001$  respectively) compared to unstimulated cells, but NF- $\kappa$ B expression was not affected (Figure 5b).



**Figure 3. Controlled epithelial cytokine secretion.** Mycobacterial control of induced transcriptional factors was analysed as epithelial cytokine secretion from six hours up to three days after infection. Infection induced a significant (a) IL-6 and (b) IL-10 secretion that peaked at 72 hours ( $p = 0.0425$  and  $p = 0.0186$  compared to LPS). (c) Mycobacterial infection of primary epithelial cells induced an early significant IL-22 secretion ( $p = 0.0463$  compared to LPS) that ended 24 hours after infection. Data are presented as mean  $\pm$  SEM of four separate experiments; \* $p < 0.05$  and \*\* $p < 0.01$ . doi:10.1371/journal.pone.0086466.g003

### TLRs are involved in mycobacterial regulation of mucosal inflammation

To further determine the impact of TLR2 and TLR4 on mycobacteria induced cytokine production, the receptors were blocked prior to mycobacterial infection and the impact of modulated epithelial signalling was studied by Western blotting three days after infection. Blocking of TLR2 ( $p = 0.0063$ ) or TLR4 ( $p = 0.0047$ ) prior to infection or stimulation with 19 kDa



**Figure 4. Mycobacterial regulation of TLR-induced cytokines.**

To determine the impact of TLR2 and TLR4 on mycobacteria induced pro- and anti-inflammatory cytokine production, the receptors were blocked prior to mycobacterial infection of the primary epithelial cells. (a) Blocking of TLR2 or TLR4 before infection decreased epithelial IL-6 secretion ( $p=0.0011$  and  $p=0.0047$  respectively) after three days. LPS induced a significantly higher IL-6 response than BCG ( $p=0.0063$ ), while 19 kDa induced a lower response compared to live mycobacteria ( $p=0.0029$ ). (b) Mycobacteria induced higher production of the anti-inflammatory IL-10 production than LPS ( $p=0.0032$ ) in human primary epithelial cells. Blocking of TLR4 prior to infection increased IL-10 secretion compared to unblocked infection ( $p=0.0399$ ). Blocking with TLR2 or addition of 19-kDa to the epithelial cells did not induce a significant change on epithelial IL-10 production compared to mycobacteria. Data are presented as mean  $\pm$  SEM of three separate experiments; \* $p<0.05$  and \*\* $p<0.01$ . doi:10.1371/journal.pone.0086466.g004

significantly increased epithelial pCREB production ( $p=0.0163$ ) (Figure 6a). Blocking of TLRs or 19 kDa stimulation of epithelial cells had a non-significant impact on pGSK3 $\beta$  expression (Figure 6b). Blocking of TLR2 or TLR4 before mycobacterial infection of primary epithelial cells non-significantly restored the NF- $\kappa$ B values to background levels (Figure 6c). The GADPH loading controls are shown in the Figure S4.

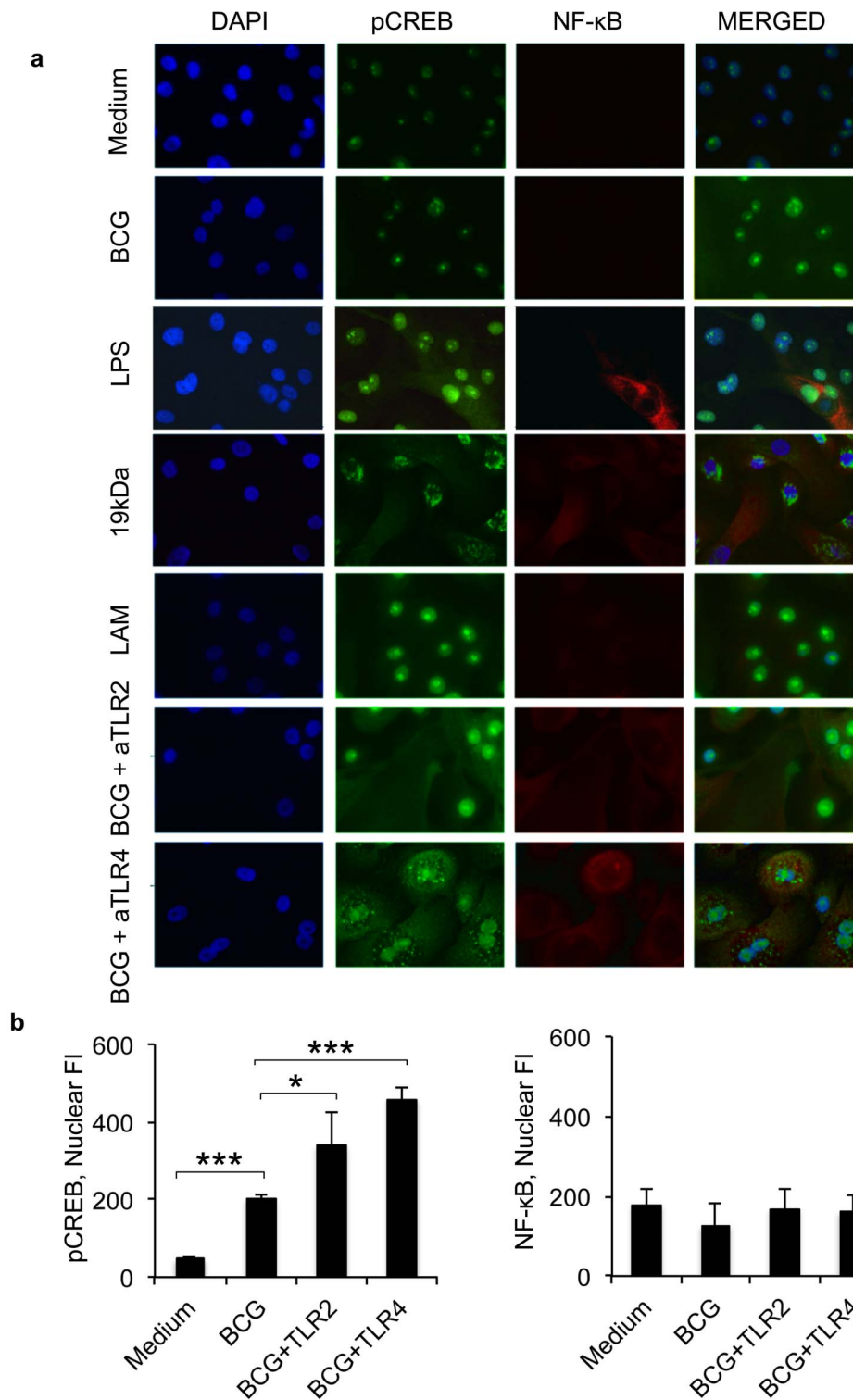
## Discussion

Functional NF- $\kappa$ B activation is essential for the maintenance of physiological immune homeostasis and protective host defence.

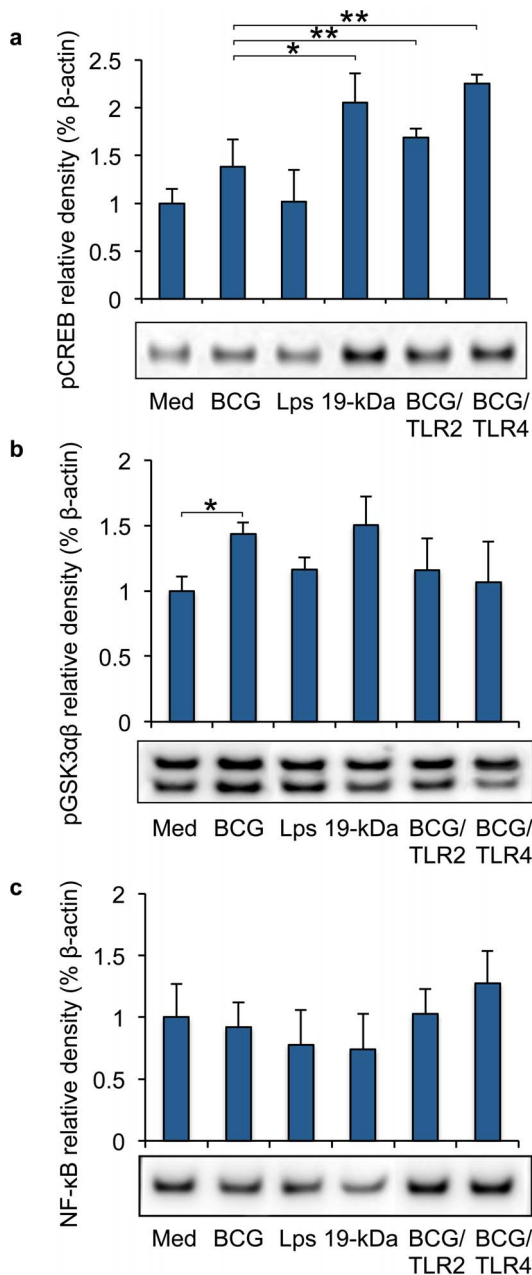
We found that *Mycobacterium bovis* bacilli Calmette-Guerin bypassed NF- $\kappa$ B activation during the first days of infection. BCG is equipped with several genes coding for invasin/adhesin-like proteins [27,29–33] and the mycobacterial adhesion heparin-binding haemagglutinin [34] is believed to be involved in invasion of human alveolar epithelial cells [35]. Activated NF- $\kappa$ B was recently shown to be essential for mycobacterial elimination, since blocking of this pathway prevented bacterial killing and allowed the bacteria to grow in macrophages [36]. To date, reported data regarding the activation of NF- $\kappa$ B by pathogenic mycobacteria are conflicting. *M. tuberculosis* was shown to suppress NF- $\kappa$ B pathway in some studies [37,38], induce a transient NF- $\kappa$ B activation in other studies and some studies observed activated NF- $\kappa$ B pathways under some conditions [39–42]. However, several bacteria are known to subvert the cell-intrinsic innate immunity by targeting NF- $\kappa$ B. *Salmonella*, *Shigella* and enteropathogenic *Escherichia coli* (EPEC) are known to suppress the NF- $\kappa$ B pathway to counteract the host defences [43,44]. Recent genetic studies revealed that EPEC suppression of host NF- $\kappa$ B signalling and NF- $\kappa$ B dependent anti-inflammatory cytokine production requires NleE, a type III-secreted effector that has homologues in *Shigella* and certain *Salmonella* species [45–47]. Recently, genome-wide screens identified previously unidentified gene products for *M. tuberculosis* persistence [48], but whether mycobacteria possess similar elements are not known.

Innate recognition of mycobacteria involves the activation of TLR2 and TLR4. Signalling through TLR activates the adaptor protein MyD88 leading to NF- $\kappa$ B signalling and the activation of ERK1/2, p38 and JNK [18]. Besides of MyD88, activation of TLRs triggers also PI3K activation leading to subsequent Akt phosphorylation. Akt and p38 phosphorylate the glycogen synthase kinase 3 (GSK3), which switches the transcription from the pro-inflammatory NF- $\kappa$ B to the anti-inflammatory CREB activation [21]. We observed that mycobacteria induced the MyD88 stimulated p38, ERK1/2 and AP-1 signalling. Interestingly, mycobacterial infection induced an early activation of the c-Jun family of AP-1 proteins in primary epithelial cells, and a late activation of the AP-1 protein Fos. Mycobacterial activation of PPAR $\gamma$  is known to suppress NF- $\kappa$ B in macrophages [16], but we could not observe mycobacteria-induced PPAR $\gamma$  activation in primary epithelial cells. GSK3 regulates the transcriptional activity of CREB and NF- $\kappa$ B by competing for the limited amount of CREB-binding protein (CBP) [21]. TLR activation could therefore either lead to a pro-inflammatory cytokine response by activation of NF- $\kappa$ B pathway, or an anti-inflammatory CREB-related cytokine response. In this study, mycobacterial infection induced increased GSK3 phosphorylation, switching thus the transcriptional activity from NF- $\kappa$ B to CREB. Indeed, epithelial cells responded early to mycobacterial infection by secreting IL-6 and the anti-inflammatory IL-22, while the anti-inflammatory IL-10 increased two days after infection. The cytokine IL-6 is transcribed by CREB, C/EBP, STAT3 and AP-1 [49,50], and can act as both pro- and anti-inflammatory in many chronic inflammatory diseases. IL-6 trans-signalling is critically involved in the maintenance of a disease state by promoting transition from acute to chronic inflammation [51]. In addition, IL-6 is required in the rapid expression of an initial protective IFN $\gamma$  response during *M. tuberculosis* infection [52]. However, concomitant IFN production can tilt the anti-inflammatory qualities of IL-10 and IL-22 towards a pro-inflammatory state [53]. We could not observe epithelial IFN $\gamma$  production, suggesting that the secreted IL-10 and IL-22 are produced to dampen the inflammation. IL-10 modulates the anti-inflammatory mechanisms by targeting NF- $\kappa$ B thereby inhibiting cellular production of TNF $\alpha$ , which could be one of the





**Figure 5. TLR4 blocking results in cytoplasmic CREB aggregation.** Mycobacterial modulation of TLR signalling pathways was confirmed by immuno-fluorescence staining of pCREB and NF- $\kappa$ B expression in primary epithelial cells. (a) Mycobacterial infection increased nuclear pCREB protein levels compared to unstimulated cells, while the expression of NF- $\kappa$ B did not increase. Blocking of TLR4 before mycobacterial infection resulted in a granular cytoplasmic pCREB distribution, similar to pCREB aggregation in 19kDa-stimulated cells. TLR2 blocking and LAM treatment induced similar pCREB distribution as live mycobacteria. (b) The results were further analysed by LSM software. Mycobacterial infection increased significantly epithelial ( $p < 0.001$ ) pCREB expression as detected by confocal immuno-fluorescent microscopy, but NF- $\kappa$ B expression was not affected. Blocking of TLR2 or TLR4 before mycobacterial infection increased pCREB expression even further ( $p = 0.0187$  and  $p = 0.001$  respectively) compared to unstimulated cells, but NF- $\kappa$ B expression was not affected. Original magnification  $\times 300$ . Data are presented as representative images or mean  $\pm$  SEM of three separate experiments; \* $p < 0.05$  and \*\*\* $p < 0.001$ . doi:10.1371/journal.pone.0086466.g006



**Figure 6. Mycobacteria control epithelial TLR responses.** The impact of TLRs on mycobacterial modulated epithelial signalling was studied by Western blotting prior to infection and three days after infection. (a) Blocking of TLR2 ( $p=0.0063$ ) or TLR4 ( $p=0.0047$ ) prior to infection or stimulation with 19 kDa significantly increased epithelial pCREB production ( $p=0.0163$ ). (b) Blocking of TLRs or 19 kDa stimulation of epithelial cells had a non-significant impact on pGSK3 $\alpha\beta$  expression. (c) Blocking of TLR2 or TLR4 before mycobacterial infection of primary epithelial cells non-significantly restored the NF- $\kappa$ B values to background levels. Data are presented as mean  $\pm$  SEM of three separate experiments; \* $p<0.05$  and \*\* $p<0.01$ . doi:10.1371/journal.pone.0086466.g006

mechanisms of NF- $\kappa$ B suppression that we observed in our study [54,55]. Mycobacteria was previously reported to induce IL-10 secretion from neutrophils through the phosphorylation of p38 and Akt kinases [56]. Mycobacterial infection of *Il10*<sup>-/-</sup> mice show enhanced protection while showing no signs of aberrant host-mediated pathology, which perhaps reflects the slow disease

progression [57,58]. The role of IL-10 could be to limit mycobacterial clearance during the early immune response through the inhibition of IL-12p40 [59]. IL-22 is found in large amounts in pleura from TB patients [60] and this cytokine is primarily expressed by CD4<sup>+</sup> T cells [61], but other leukocyte subsets also express this cytokine [62]. IL-22 acts through the IL-22 receptor complex expressed by epithelial cells and hepatocytes, where it promotes regeneration and protects against tissue damage [63,64], but accumulating evidence suggests that IL-22 can be either pathogenic or protective depending on host conditions [65]. Using the TB mouse model, a recent study showed that neutralization of IL-22 did not have any effect on the lung bacterial burden or granuloma formation [66]. The mycobacterial vaccine strain used in our study did not induce TNF $\alpha$  or IFN $\gamma$  secretion. Interestingly, recent studies support the IL-17-CXCL13 pathway rather than the IFN $\gamma$  pathway as a new strategy to improve mucosal vaccines against tuberculosis [67]. We are currently investigating if alveolar epithelia induce IL-17 or CXCL13 upon mycobacterial infection.

Blocking of epithelial TLR4 before mycobacterial infection decreased the pro-inflammatory IL-6 secretion, but increased the anti-inflammatory IL-10 secretion. TLR4 blocking prior to mycobacterial infection resulted in a granular cytoplasmic pCREB distribution similar to the 19-kDa stimulated cells. We could not find any explanation of the cytoplasmic granular accumulation, but granular accumulation of pERK in cytoplasm was shown to alternate downstream signalling in Parkinson's disease [68]. Normally, signals that induce NF- $\kappa$ B activity usually lead to I $\kappa$ B phosphorylation by the I $\kappa$ B kinase (IKK) complex, and subsequent multi-ubiquitination and degradation of this protein via proteasome, allowing NF- $\kappa$ B dimers' translocation to nucleus [69]. We observed that TLR4 blocking induced cytoplasmic accumulation of NF- $\kappa$ B as well, although no increased NF- $\kappa$ B translocation to epithelial nuclei was detected.

Mycobacteria cause persistent infections by minimizing the degree of overt pathology, allowing long-term association with the host. We have observed that mycobacterial infection of primary epithelial cells suppress NF- $\kappa$ B activation by increasing the inhibitory GSK3, thereby supporting the production of the anti-inflammatory cytokines IL-22 and IL-10. Production of anti-inflammatory cytokines is known to impair antigen presentation, which confines the inflammation and postpones the generation of adaptive immunity resulting in antigen-specific anergy. These events could lead to an impaired innate immune response by which mycobacteria create a safe haven for chronic infection and transmission to new hosts.

## Supporting Information

**Figure S1 Intracellular viability of mycobacteria.** (TIF)

**Figure S2 Epithelial viability visualized by trypan blue exclusion assay three days after infection, with or without blocking of TLR2 or TLR4.** (TIF)

**Figure S3 Actin loading controls (Figure 2).** (TIF)

**Figure S4 GADPH loading controls (Figure 6).** (TIF)

## Acknowledgments

We thank Märta Andersson for technical help with the manuscript.

## Author Contributions

Conceived and designed the experiments: NL GH NA GG. Performed the experiments: NL GH NA. Analyzed the data: NL GH GG. Contributed

reagents/materials/analysis tools: OH GWT. Wrote the paper: NL GH GG.

## References

- Lin Y, Zhang M, Barnes PF (1998) Chemokine production by a human alveolar epithelial cell line in response to *Mycobacterium tuberculosis*. *Infect Immun* 66: 1121–1126.
- Wickremasinghe MI, Thomas LH, Friedland JS (1999) Pulmonary epithelial cells are a source of IL-8 in the response to *Mycobacterium tuberculosis*: essential role of IL-1 from infected monocytes in a NF- $\kappa$ B-dependent network. *J Immunol* 163: 3936–3947.
- Mendez-Samperio P, Alba L, Perez A (2007) *Mycobacterium bovis* bacillus Calmette-Guerin (BCG)-induced CXCL8 production is mediated through PKC $\alpha$ -dependent activation of the IKK $\alpha$  signaling pathway in epithelial cells. *Cell Immunol* 245: 111–118.
- Andersson M, Lutay N, Hallgren O, Westergren-Thorsson G, Svensson M, et al. (2012) *Mycobacterium bovis* bacilli Calmette-Guerin regulates leukocyte recruitment by modulating alveolar inflammatory responses. *Innate Immun* 18: 531–540.
- Hakansson G, Lutay N, Andersson M, Hallgren O, Westergren-Thorsson G, et al. (2012) Epithelial G protein-coupled receptor kinases regulate the initial inflammatory response during mycobacterial infection. *Immunobiology*.
- Neufert C, Pai RK, Noss EH, Berger M, Boom WH, et al. (2001) *Mycobacterium tuberculosis* 19-kDa lipoprotein promotes neutrophil activation. *J Immunol* 167: 1542–1549.
- Godaly G, Young DB (2005) *Mycobacterium bovis* bacille Calmette Guerin infection of human neutrophils induces CXCL8 secretion by MyD88-dependent TLR2 and TLR4 activation. *Cell Microbiol* 7: 591–601.
- Silva MT, Silva MN, Appelberg R (1989) Neutrophil-macrophage cooperation in the host defence against mycobacterial infections. *Microb Pathog* 6: 369–380.
- Elkington PT, Emerson JE, Lopez-Pascua LD, O’Kane CM, Horncastle DE, et al. (2005) *Mycobacterium tuberculosis* up-regulates matrix metalloproteinase-1 secretion from human airway epithelial cells via a p38 MAPK switch. *J Immunol* 175: 5333–5340.
- Li Y, Wang Y, Liu X (2012) The role of airway epithelial cells in response to mycobacteria infection. *Clin Dev Immunol* 2012: 791392.
- Huynh KK, Joshi SA, Brown EJ (2011) A delicate dance: host response to mycobacteria. *Curr Opin Immunol* 23: 464–472.
- Brightbill HD, Libraty DH, Krutzik SR, Yang RB, Belisle JT, et al. (1999) Host defense mechanisms triggered by microbial lipoproteins through toll-like receptors. *Science* 285: 732–736.
- Quesniaux VJ, Nicolle DM, Torres D, Kremer L, Guerardel Y, et al. (2004) Toll-like receptor 2 (TLR2)-dependent-positive and TLR2-independent-negative regulation of proinflammatory cytokines by mycobacterial lipomannans. *J Immunol* 172: 4425–4434.
- Jo EK, Yang CS, Choi CH, Harding CV (2007) Intracellular signalling cascades regulating innate immune responses to *Mycobacteria*: branching out from Toll-like receptors. *Cell Microbiol* 9: 1087–1098.
- Necela BM, Su W, Thompson EA (2008) Toll-like receptor 4 mediates cross-talk between peroxisome proliferator-activated receptor gamma and nuclear factor- $\kappa$ B in macrophages. *Immunology* 125: 344–358.
- Almeida PE, Silva AR, Maya-Monteiro CM, Torocsik D, D’Avila H, et al. (2009) *Mycobacterium bovis* bacillus Calmette-Guerin infection induces TLR2-dependent peroxisome proliferator-activated receptor gamma expression and activation: functions in inflammation, lipid metabolism, and pathogenesis. *J Immunol* 183: 1337–1345.
- Mahajan S, Dkhar HK, Chandra V, Dave S, Nanduri R, et al. (2012) *Mycobacterium tuberculosis* modulates macrophage lipid-sensing nuclear receptors PPAR $\gamma$  and TR4 for survival. *J Immunol* 188: 5593–5603.
- Kawai T, Akira S (2010) The role of pattern-recognition receptors in innate immunity: update on Toll-like receptors. *Nat Immunol* 11: 373–384.
- Ruse M, Knaus UG (2006) New players in TLR-mediated innate immunity: PI3K and small Rho GTPases. *Immunol Res* 34: 33–48.
- Doble BW, Woodgett JR (2003) GSK-3: tricks of the trade for a multi-tasking kinase. *J Cell Sci* 116: 1175–1186.
- Martin M, Rehani K, Jope RS, Michalek SM (2005) Toll-like receptor-mediated cytokine production is differentially regulated by glycogen synthase kinase 3. *Nat Immunol* 6: 777–784.
- Bermudez LE, Goodman J (1996) *Mycobacterium tuberculosis* invades and replicates within type II alveolar cells. *Infect Immun* 64: 1400–1406.
- Mehta PK, King CH, White EH, Murtagh JJ, Jr., Quinn FD (1996) Comparison of in vitro models for the study of *Mycobacterium tuberculosis* invasion and intracellular replication. *Infect Immun* 64: 2673–2679.
- Snewin VA, Gares MP, Gaora PO, Hasan Z, Brown IN, et al. (1999) Assessment of immunity to mycobacterial infection with luciferase reporter constructs. *Infect Immun* 67: 4586–4593.
- Saini D, Hopkins GW, Seay SA, Chen CJ, Perley CC, et al. (2012) Ultra-low dose of *Mycobacterium tuberculosis* aerosol creates partial infection in mice. *Tuberculosis (Edinb)* 92: 160–165.
- Caceres N, Llopis I, Marzo E, Prats C, Vilaplana C, et al. (2012) Low dose aerosol fitness at the innate phase of murine infection better predicts virulence amongst clinical strains of *Mycobacterium tuberculosis*. *PLoS One* 7: e29010.
- Florio W, Brancatisano FL, Bottai D, Esin S, Di Luca M, et al. (2009) The BCG1619c gene is not essential for invasion and intracellular persistence of *Mycobacterium bovis* BCG in human THP-1 and A549 cell lines. *Can J Microbiol* 55: 975–982.
- Mocellin S, Panelli MC, Wang E, Nagorsen D, Marincola FM (2003) The dual role of IL-10. *Trends Immunol* 24: 36–43.
- Cole ST, Brosch R, Parkhill J, Garnier T, Churcher C, et al. (1998) Deciphering the biology of *Mycobacterium tuberculosis* from the complete genome sequence. *Nature* 393: 537–544.
- Garnier T, Eiglmeier K, Camus JC, Medina N, Mansoor H, et al. (2003) The complete genome sequence of *Mycobacterium bovis*. *Proc Natl Acad Sci U S A* 100: 7877–7882.
- Ahmad S, El-Shazly S, Mustafa AS, Al-Attayah R (2005) The six mammalian cell entry proteins (Mce3A-F) encoded by the mce3 operon are expressed during in vitro growth of *Mycobacterium tuberculosis*. *Scand J Immunol* 62: 16–24.
- Gao LY, Pak M, Kish R, Kajihara K, Brown EJ (2006) A mycobacterial operon essential for virulence in vivo and invasion and intracellular persistence in macrophages. *Infect Immun* 74: 1757–1767.
- Brosch R, Gordon SV, Garnier T, Eiglmeier K, Frigui W, et al. (2007) Genome plasticity of BCG and impact on vaccine efficacy. *Proc Natl Acad Sci U S A* 104: 5596–5601.
- Menzioz FD, Reddy VM, Cayet D, Raze D, Debric AS, et al. (2006) *Mycobacterium tuberculosis* heparin-binding haemagglutinin adhesin (HBHA) triggers receptor-mediated transcytosis without altering the integrity of tight junctions. *Microbes Infect* 8: 1–9.
- Pethe K, Puch V, Daffe M, Josenhans C, Drobecq H, et al. (2001) *Mycobacterium smegmatis* laminin-binding glycoprotein shares epitopes with *Mycobacterium tuberculosis* heparin-binding haemagglutinin. *Mol Microbiol* 39: 89–99.
- Gutierrez MG, Mishra BB, Jordao L, Elliott E, Anes E, et al. (2008) NF- $\kappa$ B activation controls phagolysosome fusion-mediated killing of mycobacteria by macrophages. *J Immunol* 181: 2651–2663.
- Pathak SK, Basu S, Basu KK, Banerjee A, Pathak S, et al. (2007) Direct extracellular interaction between the early secreted antigen ESAT-6 of *Mycobacterium tuberculosis* and TLR2 inhibits TLR signaling in macrophages. *Nat Immunol* 8: 610–618.
- Pathak SK, Basu S, Bhattacharyya A, Pathak S, Kundu M, et al. (2005) *Mycobacterium tuberculosis* lipoarabinomannan-mediated IRAK-M induction negatively regulates Toll-like receptor-dependent interleukin-12 p40 production in macrophages. *J Biol Chem* 280: 42794–42800.
- Toossi Z, Hamilton BD, Phillips MH, Averill LE, Ellner JJ, et al. (1997) Regulation of nuclear factor- $\kappa$ B and its inhibitor I $\kappa$ B- $\alpha$ /MAD-3 in monocytes by *Mycobacterium tuberculosis* and during human tuberculosis. *J Immunol* 159: 4109–4116.
- Lee SB, Schorey JS (2005) Activation and mitogen-activated protein kinase regulation of transcription factors Ets and NF- $\kappa$ B in *Mycobacterium*-infected macrophages and role of these factors in tumor necrosis factor alpha and nitric oxide synthase 2 promoter function. *Infect Immun* 73: 6499–6507.
- Dhiman R, Raje M, Majumdar S (2007) Differential expression of NF- $\kappa$ B in mycobacteria infected THP-1 affects apoptosis. *Biochim Biophys Acta* 1770: 649–658.
- Loeuillet C, Martinon F, Perez C, Munoz M, Thome M, et al. (2006) *Mycobacterium tuberculosis* subverts innate immunity to evade specific effectors. *J Immunol* 177: 6245–6255.
- Bhavsar AP, Guttman JA, Finlay BB (2007) Manipulation of host-cell pathways by bacterial pathogens. *Nature* 449: 827–834.
- Roy CR, Mocarski ES (2007) Pathogen subversion of cell-intrinsic innate immunity. *Nat Immunol* 8: 1179–1187.
- Nadler C, Baruch K, Kobi S, Mills E, Haviv G, et al. (2010) The type III secretion effector NleE inhibits NF- $\kappa$ B activation. *PLoS Pathog* 6: e1000743.
- Newton HJ, Pearson JS, Badea L, Kelly M, Lucas M, et al. (2010) The type III effectors NleE and NleB from enteropathogenic *E. coli* and *OspZ* from *Shigella* block nuclear translocation of NF- $\kappa$ B p65. *PLoS Pathog* 6: e1000898.
- Vossenkamper A, Marches O, Fairclough PD, Warnes G, Stagg AJ, et al. (2010) Inhibition of NF- $\kappa$ B signaling in human dendritic cells by the enteropathogenic *Escherichia coli* effector protein NleE. *J Immunol* 185: 4118–4127.
- Zhang YJ, Ioerger TR, Huttenhower C, Long JE, Sasseti CM, et al. (2012) Global assessment of genomic regions required for growth in *Mycobacterium tuberculosis*. *PLoS Pathog* 8: e1002946.
- Hershko DD, Robb BW, Luo G, Hasselgren PO (2002) Multiple transcription factors regulating the IL-6 gene are activated by cAMP in cultured Caco-2 cells. *Am J Physiol Regul Integr Comp Physiol* 283: R1140–1148.

50. Knight D, Mutsaers SE, Prele CM (2011) STAT3 in tissue fibrosis: is there a role in the lung? *Pulm Pharmacol Ther* 24: 193–198.
51. Rose-John S, Scheller J, Elson G, Jones SA (2006) Interleukin-6 biology is coordinated by membrane-bound and soluble receptors: role in inflammation and cancer. *J Leukoc Biol* 80: 227–236.
52. Saunders BM, Frank AA, Orme IM, Cooper AM (2000) Interleukin-6 induces early gamma interferon production in the infected lung but is not required for generation of specific immunity to *Mycobacterium tuberculosis* infection. *Infect Immun* 68: 3322–3326.
53. Muhl H (2013) Pro-Inflammatory Signaling by IL-10 and IL-22: Bad Habit Stirred Up by Interferons? *Front Immunol* 4: 18.
54. de Waal Malefyt R, Abrams J, Bennett B, Figdor CG, de Vries JE (1991) Interleukin 10(IL-10) inhibits cytokine synthesis by human monocytes: an autoregulatory role of IL-10 produced by monocytes. *J Exp Med* 174: 1209–1220.
55. Bhattacharyya S, Sen P, Wallet M, Long B, Baldwin AS, Jr., et al. (2004) Immunoregulation of dendritic cells by IL-10 is mediated through suppression of the PI3K/Akt pathway and of I $\kappa$ B kinase activity. *Blood* 104: 1100–1109.
56. Zhang X, Majlessi L, Deriaud E, Leclerc C, Lo-Man R (2009) Coactivation of Syk kinase and MyD88 adaptor protein pathways by bacteria promotes regulatory properties of neutrophils. *Immunity* 31: 761–771.
57. Murray PJ, Young RA (1999) Increased antimycobacterial immunity in interleukin-10-deficient mice. *Infect Immun* 67: 3087–3095.
58. Jacobs M, Brown N, Allie N, Gulert R, Ryffel B (2000) Increased resistance to mycobacterial infection in the absence of interleukin-10. *Immunology* 100: 494–501.
59. Mazurek J, Ignatowicz L, Kallenius G, Svenson SB, Pawlowski A, et al. (2012) Divergent effects of mycobacterial cell wall glycolipids on maturation and function of human monocyte-derived dendritic cells. *PLoS One* 7: e42515.
60. Matthews K, Wilkinson KA, Kalsdorf B, Roberts T, Diacon A, et al. Predominance of interleukin-22 over interleukin-17 at the site of disease in human tuberculosis. *Tuberculosis (Edinb)* 91: 587–593.
61. Liang SC, Tan XY, Luxenberg DP, Karim R, Dunussi-Joannopoulos K, et al. (2006) Interleukin (IL)-22 and IL-17 are coexpressed by Th17 cells and cooperatively enhance expression of antimicrobial peptides. *J Exp Med* 203: 2271–2279.
62. Colonna M (2009) Interleukin-22-producing natural killer cells and lymphoid tissue inducer-like cells in mucosal immunity. *Immunity* 31: 15–23.
63. Zeleniewicz LA, Yancopoulos GD, Valenzuela DM, Murphy AJ, Stevens S, et al. (2008) Innate and adaptive interleukin-22 protects mice from inflammatory bowel disease. *Immunity* 29: 947–957.
64. Aujla SJ, Chan YR, Zheng M, Fei M, Askew DJ, et al. (2008) IL-22 mediates mucosal host defense against Gram-negative bacterial pneumonia. *Nat Med* 14: 275–281.
65. Rutz S, Eidenschenk C, Ouyang W (2013) IL-22, not simply a Th17 cytokine. *Immunol Rev* 252: 116–132.
66. Wilson MS, Feng CG, Barber DL, Yarovinsky F, Cheever AW, et al. (2010) Redundant and pathogenic roles for IL-22 in mycobacterial, protozoan, and helminth infections. *J Immunol* 184: 4378–4390.
67. Gopal R, Rangel-Moreno J, Slight S, Lin Y, Nawar HF, et al. (2013) Interleukin-17-dependent CXCL13 mediates mucosal vaccine-induced immunity against tuberculosis. *Mucosal Immunol*.
68. Zhu JH, Kulich SM, Oury TD, Chu CT (2002) Cytoplasmic aggregates of phosphorylated extracellular signal-regulated protein kinases in Lewy body diseases. *Am J Pathol* 161: 2087–2098.
69. Caamano J, Hunter CA (2002) NF- $\kappa$ B family of transcription factors: central regulators of innate and adaptive immune functions. *Clin Microbiol Rev* 15: 414–429.