



LUND UNIVERSITY

Resistivity-IP Surveying for Engineering and Environmental Applications Using Multi-Electrode Equipment

Dahlin, Torleif

2011

[Link to publication](#)

Citation for published version (APA):

Dahlin, T. (2011). *Resistivity-IP Surveying for Engineering and Environmental Applications Using Multi-Electrode Equipment*. 252-255. Paper presented at Fifth All-Russia School-Workshop on Electromagnetic Sensing of the Earth - EMS-2011, St. Petersburg, Russian Federation.

Total number of authors:

1

General rights

Unless other specific re-use rights are stated the following general rights apply:

Copyright and moral rights for the publications made accessible in the public portal are retained by the authors and/or other copyright owners and it is a condition of accessing publications that users recognise and abide by the legal requirements associated with these rights.

- Users may download and print one copy of any publication from the public portal for the purpose of private study or research.
- You may not further distribute the material or use it for any profit-making activity or commercial gain
- You may freely distribute the URL identifying the publication in the public portal

Read more about Creative commons licenses: <https://creativecommons.org/licenses/>

Take down policy

If you believe that this document breaches copyright please contact us providing details, and we will remove access to the work immediately and investigate your claim.

LUND UNIVERSITY

PO Box 117
221 00 Lund
+46 46-222 00 00

RESISTIVITY-IP SURVEYING FOR ENGINEERING AND ENVIRONMENTAL APPLICATIONS USING MULTI-ELECTRODE EQUIPMENT

Dahlin T.

Engineering Geology, Lund University, Box 118, S-221 00 Lund, Sweden, torleif.dahlin@tg.lth.se

Introduction

The need of detailed information about the geo-environment is growing as a result of growing cities, infrastructure development and environmental concerns. Due increasingly limited space more tunnels and other underground constructions are needed. Furthermore there is demand for re-use of areas formerly used as waste dumps and contaminating industries. There is also increasing awareness of the need to protect and monitor our ecosystem services, including groundwater resources. The above calls for high quality data with sufficient spatial resolution, which can only realistically be solved with geophysical data in combination with well targeted in-situ investigations such as drilling, sampling, test pumping etc. Combined resistivity and induced polarisation (IP) imaging creating two dimensional (2D) and three dimensional (3D) images of the subsurface space, can be a powerful tool for this, as is illustrated below.

Method Description

Resistivity and time-domain IP was measured using an ABEM Terrameter LS (Lund System) equipped with 12 measuring channels. This instrument offers several advantages compared to previous generations, improving speed of measurement and data quality. The 12 input channels are based on 24 bit AD-converters with measuring ranges 2.5V, 15V & 1000V, and in addition there are two channels measuring the transmitted current and potential. The constant current transmitter can put out a maximum of 600V, 2.5A or 250W. There is a built-in 64 electrode relay switch, and a GPS receiver. In the examples presented here multiple gradient array was used (Dahlin and Zhou 2006). In addition potentials were measured outside the transmitter electrode pair (bipole-dipole array) in order to increase the sensitivity towards the ends of the electrode layout, and we may thus call it an expanded i.e. multiple gradient array. Res2dinv or Res3dinv with the L1-norm (robust) inversion norm was used for creating the models presented here (Loke et al. 2003).

Example Landslide Risk Due to Quick Clay

In parts of Sweden, Norway and Canada the occurrence of so called quick clay constitutes serious landslide hazards. Quick clay is formed by clay that was deposited in a marine saline environment, which has later been leached by circulating groundwater and deprived of its salt content. As salt is removed the clay can become unstable and liquify due to a small disturbance. Previous research has shown that resistivity mapping can be used for separation of saline soil volumes that are stable, from volumes that may be leached and quick (e.g. Rankka et al. 2004; Lundström et al 2009). Dry crusts and thin weathered zones at top have high resistivity but are non-quick. Soils with less clay content will have higher resistivity without being quick. Supplement is thus needed from geotechnical investigations, but on the other hand a resistivity investigation is an excellent basis for designing a geotechnical drilling / sounding program.

A recent example is a resistivity-IP survey that was carried out in an area close to Göta Älv in 2010. During 5 field days 8 lines with a combined length of 3800 m and comprising over 26 000 resistivity-IP data points were measured. Inversion gave consistent models with low model residuals (1-2% for resistivity, 3-7% for IP). A fence diagram that gives an overview of the inverted resistivity models is shown in Figure 1. Preliminary evaluation of the results shows that there is good agreement between the resistivity models and geotechnical sounding data. Thus, the lowest resistivities show non-quick saline clay, intermediate resistivity is possible quick clay but may also be other soil types, whereas the highest resistivities are due to crystalline rock.

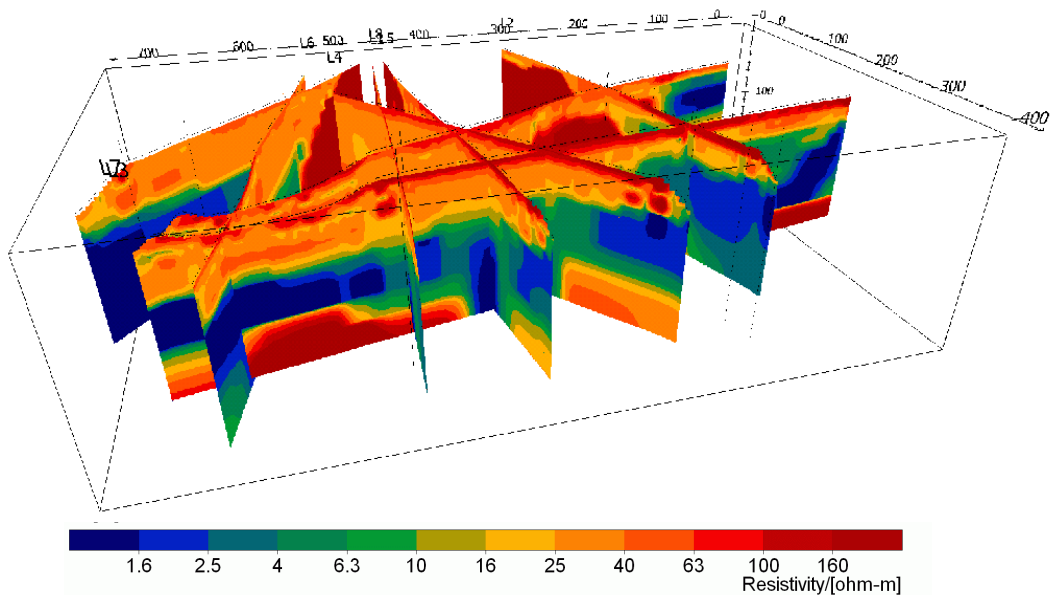


Figure 1. Resistivity results from quick clay delineation at Göta Älv.

Example Waste Characterisation

Buried waste in old landfills is an increasing problem as cities expand and grow into areas with former waste deposits. In order to be able to manage and as far as possible reclaim land in such areas, better tools are needed for mapping and characterisation of buried waste and contaminated land. Combined resistivity-IP surveying has shown great potential for this (e.g. Dahlin et al 2010).

As part of an on-going research project³ a 3D survey was carried out over part of an existing landfill, using 300 m long layouts with 5 m electrode take-out spacing. A total of 11 lines 300-330 m long spaced 10 m were measured in one field week, resulting in 17680 resistivity-IP data points on a total of 3330 m of profile. Data were inverted with Res2dinv and Res3dinv using L1-norm (robust) inversion. The model residuals were in the range 1-2% (resistivity), 7-10% (IP) for the 2D inversion.

An example of preliminary results is shown in Figure 2. The volumes with high normalised chargeability are interpreted to consist of mixed waste or leakage contamination, whereas low chargeability volumes are interpreted as soil cover on top of the waste, soil barriers between waste cells and sedimentary rock below the waste respectively. Parts of the waste that are not covered by soil are clearly visible as high chargeability at the surface. High chargeability in the bottom part of the model may possibly be caused by precipitation in connection with contaminant migration.

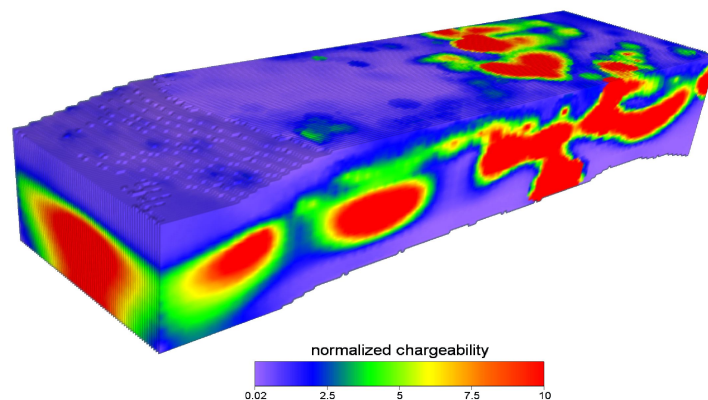


Figure 2. Normalised IP model based on 3D inversion of data from Filborna waste deposit.

³ MaLaGa (Mapping of landfill structures and gas migration based on geophysical measurements), see <http://malageophysics.blogspot.com/> for information.

Example Embankment Dam Survey / Monitoring

Resistivity monitoring can be a powerful concept for tracing migration of fluids and ions (e.g. Sjö Dahl et al. 2007; Sjö Dahl et al. 2009). A short term monitoring investigation was carried out on a small embankment dam with the purpose to identify leakage paths (Sjö Dahl et al. 2011). Measurements started with the reservoir water at a lower level, and were repeated after the reservoir level had been raised by 0.55m. The survey line was 63 m long with electrodes at 1 m spacing. Since a large part of the line was paved holes were drilled through the pavement, and the holes were filled with granulated clay and water to provide electrode contact. Resistivity measuring was repeated 13 times in total, and combined resistivity-IP measuring repeated 2 times. The total time for the survey was less than two days from the start to end of measurements, during which a total of 41 910 data points were measured. Remote control via mobile internet modem was used to enable measurement control away from the site. Res2dinv time-lapse inversion using L1-norm gave model residuals in the range 2 - 4 %.

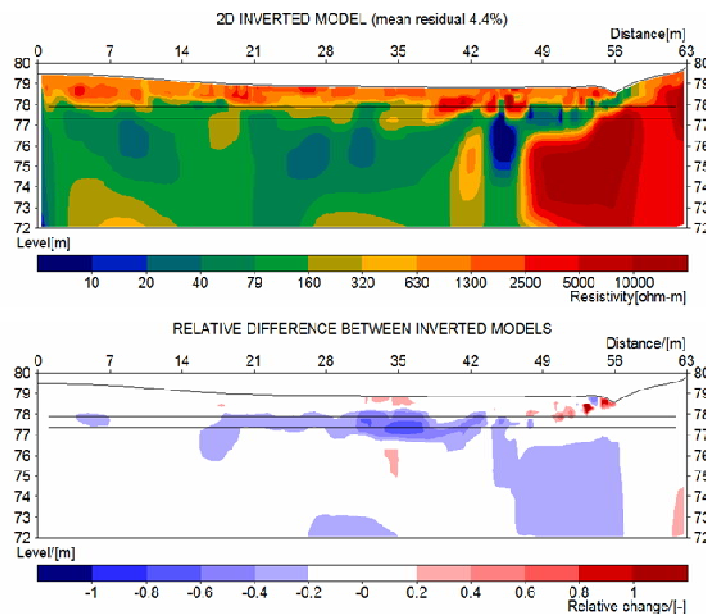


Figure 3. Example results from embankment dam study; a) inverted resistivity model, b) change in resistivity between first and last time-step.

Example results are presented in Figure 3, where the two horizontal lines show the initial reservoir water level and the level after raising the water level. The difference section clearly outlines zones of decreasing resistivity in this level interval that can be interpreted as the major water leakage paths. The zones of decrease at larger depth in the section are probably due to 3D effects, whereas the small zones of increase in resistivity may be due to drying out of soil that was not protected by pavement during the rains preceding this survey.

Summary / Conclusions

The experiences illustrated by the above examples can be summarised as:

- There is large potential for resistivity-IP imaging in environmental and engineering applications.
- Multi-electrode multi-channel data acquisition is time and cost efficient.
- Time-domain IP data acquisition is fast, and provides useful data if site conditions permit.
- Better inversion software is needed for full interpretation of IP data.
- There is more to learn about applicability and interpretation of IP data.
- Migration of water and / or pollutants can be traced with time-lapse studies / monitoring.

Acknowledgements

The landslide risk survey was carried out in cooperation with Swedish Geotechnical Institute as part of a government commissioned mapping the landslide risk circumstances in the region along the Göta Älv valley. The waste characterisation survey was done in cooperation with Tyréns AB and NSR AB, with economic support from Sven Tyréns Stiftelse, Swedish Waste Management, Swedish Gas Centre, NSR AB, SYSAV and Lund University. The embankment dam study was made jointly with HydroResearch Sam Johansson AB on commission from Fortum Generation AB. The fruitful cooperation and economic support is gratefully acknowledged.

References

1. Dahlin, T., Rosqvist, H., Leroux, V. (2010) Resistivity-IP for landfill applications, *First Break*, 28(8) 101-105 (also available in Russian).
2. Dahlin, T. and Zhou, B. (2006) Gradient array measurements for multi-channel 2D resistivity imaging, *Near Surface Geophysics*, 4, 113-123.
3. Leroux, V. and Dahlin, T. (2005) Time-lapse resistivity investigations for imaging saltwater infiltration in glaciofluvial deposits, *Environmental Geology*, 49(3), 347-358.
4. Loke, M.H., Acworth, I. and Dahlin, T. (2003) A comparison of smooth and blocky inversion methods in 2-D electrical imaging surveys, *Exploration Geophysics*, 34(3), 182-187.
5. Lundström, K., Larsson, R. and Dahlin, T. (2009) Mapping of quick clay formations by geotechnical and geophysical methods, *Landslides*, 6: 1-15.
6. Rankka, K., Andersson-Sköld, Y., Hultén, C., Larsson, R., Leroux, V. and Dahlin, T. (2004) *Quick clay in Sweden*, Report 65, ISRN SGI-R--04/65--SE, Swedish Geotechnical Institute, Linköping, 145p.
7. Sjö Dahl P., Dahlin T. and Johansson S. (2007) Detection of Internal Erosion and Seepage Using Resistivity Monitoring, *WasserWirtschaft*, 10: 54-56 (also available in Russian).
8. Sjö Dahl P., Dahlin T. and Johansson S. (2009) Estimating seepage flow from resistivity monitoring data at the Sädva embankment dam, *Near Surface Geophysics*, 7, 463-474.
9. Sjö Dahl P, Johansson S, Dahlin T (2011) Investigation of shallow leakage zones in a small embankment dam using repeated resistivity measurements. in *Internal erosion in embankment dams and their foundations*, ed. J-J Fry, J Riha, T Julinek, ISBN 978-80-7204-736-9, Procs of the Institute of Water Structures FCE BUT Brno, Volume 13, 26-29 April 2011, Brno, Czech Republic, p 165-172.

ОПЫТ СОВМЕСТНОЙ ИНТЕРПРЕТАЦИИ РЕЗУЛЬТАТОВ ЗОНДИРОВАНИЙ НА ПОСТОЯННОМ ТОКЕ И АМТЗ.....	230
Скороходов А.А.	230
ПРИМЕРЫ ПРИМЕНЕНИЯ АУДИОМАГНИТОТЕЛЛУРИЧЕСКОГО МЕТОДА С КОНТРОЛИРУЕМЫМ ИСТОЧНИКОМ В ПОЛЬШЕ	232
Стефанюк М., Войдыла М., Сито Л.	232
СОВРЕМЕННЫЙ ТЕПЛОВЫЙ ПОТОК И АНОМАЛИИ ЭЛЕКТРОПРОВОДНОСТИ В ДОНБАССЕ.....	234
Усенко О.В.	234
ВЛИЯНИЕ СТЕПЕНИ ДИАГЕНЕЗА И КАТАГЕНЕЗА НА СОПРОТИВЛЕНИЕ ГОРНЫХ ПОРОД.....	238
Фельдман И.С.	238
ПРИМЕНЕНИЕ ГЕОЭЛЕКТРИЧЕСКИХ И ДИСТАНЦИОННЫХ МЕТОДОВ ДЛЯ ПОИСКОВ СКОПЛЕНИЙ УГЛЕВОДОРОДОВ РАЗЛИЧНОГО ТИПА.....	242
Якимчук Н.А., Левашов С.П., Корчагин И.Н.	242

СЕКЦИЯ 4

РУДНАЯ ЭЛЕКТРОРАЗВЕДКА

MULTI-FREQUENCY MULTI SPACING PROFILING FOR MINING AND ENVIRONMENTAL APPLICATIONS.....	248
Bernard J.	248
RESISTIVITY-IP SURVEYING FOR ENGINEERING AND ENVIRONMENTAL APPLICATIONS USING MULTI-ELECTRODE EQUIPMENT.....	252
Dahlin T.	252
РЕЗУЛЬТАТЫ ГЕОРАДАРНОГО ОБСЛЕДОВАНИЯ ВОРОНОК НА МЕСТЕ ПАДЕНИЯ ТУНГУССКОГО МЕТЕОРИТА.....	256
Алексеев В.А., Копейкин В.В.	256
ОПЫТ ИСПОЛЬЗОВАНИЯ СОВРЕМЕННЫХ МЕТОДОВ АЭРОЭЛЕКТРОРАЗВЕДКИ ПРИ РЕШЕНИИ РАЗЛИЧНЫХ ГЕОЛОГИЧЕСКИХ ЗАДАЧ.....	259
Бабаянц П.С., Трусов А.А.	259
ПРАКТИКА ПРИМЕНЕНИЯ ЭЛЕКТРОТОМОГРАФИИ ПРИ РЕШЕНИИ РУДНЫХ ЗАДАЧ	261
Бобачев А.А., Ерохин С.А.	261